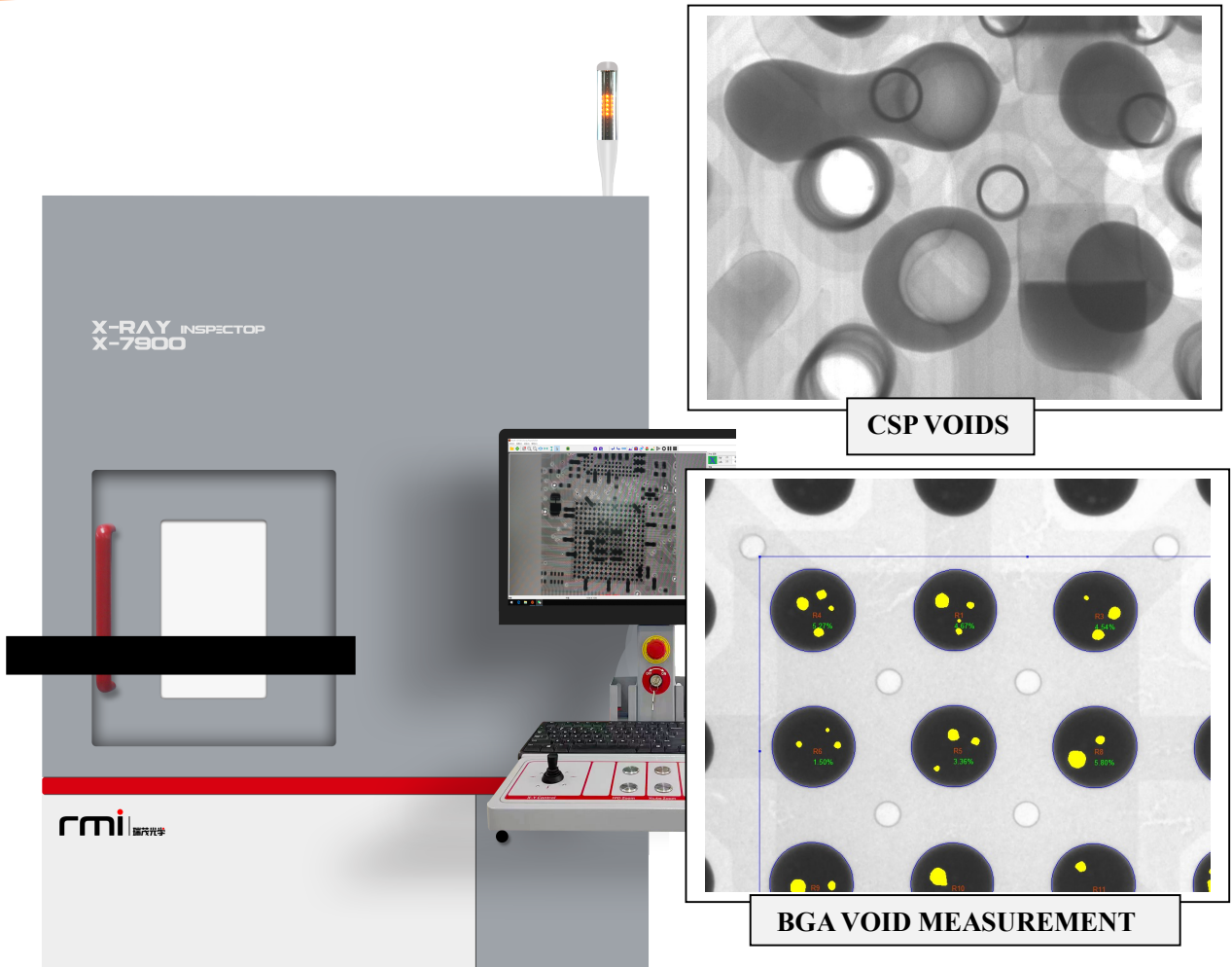




Resources Unlimited Co USA LLC



COBRA X-7900 X-RAY SPECIFICATION

- * MICRO FOCUS TUBE (130kV)
- * FPD (130 X 130mm, 16 BIT)
- * MOTION FLEXIBILITY (X/Y/Z/ARC)
- * PCB SIZE: 510mm x 510mm
- * SMT & ELECTRONICS APPLICATIONS
- * INTUITIVE WORKSTATION/SOFTWARE
- * STEP & REPEAT PROGRAMMING
- * DIMENSION: (L1.2M X D1.3M X H1.7M)
- * FULL FDA AND CE CERTIFICATION

todd@rucousallc.com
Phone: 909-996-8689
www.rucousallc.com