

*Tele (club) 8786 8794 Club email bdwwcsec@outlook.com*

*Postal address:*

**The Berwick District Woodworkers Inc  
PO Box 921, High Street, Berwick, Victoria, 3806**

*Location:*

**The Old Cheese Factory, 34 Homestead Road Berwick, 3806  
Inc. No A0012122U**

Welcome to the newsletter for October 2020

**DATES TO REMEMBER:** **Committee Meeting** - Fortnightly By Zoom.  
**Monthly Meeting** - None until further notice.

### **PRESIDENT'S REPORT.**

I hope this finds all members in good health. With this covid situation let's hope that we get some relief from these restrictions shortly. Maybe Sunday 18<sup>th</sup> October. Let's hope the numbers continue to fall and we can get back together before Christmas, it is important that we keep in contact with one another.

On a sad note we received the news the other day that **Joyce Hollis** passed away (**Peter Hollis's** wife) we pass our sympathies onto the Hollis Family.

The Farmers' Market was held again on the 10<sup>th</sup> October. **Martin Van Diemen** organised it with **Pat Mahoney, Bill Bradshaw, Colin Ellard** and **Mark Bellis** to assist at the market with a couple on the gate and couple to look after the car parking. It was a very successful market with just on 800 people attending giving the club a great result. My sincere thanks go to each of these gentlemen for their efforts and a special thanks to Martin for organising the troupes.

Finally a reminder that our Club fees are now over due and can be paid directly into our bank account at Westpac BSB 033609 a/c No 416074 and be sure to add your name in the comments area. Alternatively you can send a cheque by mail to the club addressed to the Treasurer at Post Office Box 921 Berwick 3806.

The Clubs Annual General Meeting has now been put back further more details later.

At present we are unable to have any general meetings; the committee is having Zoom meetings regularly and will have another on Tuesday 13<sup>th</sup> October. We will keep members informed, by the newsletter, of any changes or email if it is urgent.

My wife had her last Chemo treatment on Monday 14 September, and we are now investigating as to whether she will have to have Radiation treatment or not; she has a number of doctor's appointments and tests to be completed over the next couple of months to ascertain the success of the Chemo and any follow-up treatment she may have to have.

I wish all members and their families the best of health and until next time please stay fit and healthy and I look forward to seeing you all again soon.



**Len Preece - President.**

**CLUB INFORMATION:**

**MEETINGS:**

**COMMITTEE**

**GENERAL**

**SPEAKERS ETC**

**FARMERS' MARKET**

--

--

--

14th November

**Committee of Management:**

<b>Contact Details</b>	<b>Name</b>	<b>Phone</b>
President	Len Preece	59405564
Vice President	Brian Crowe	0438 012 155
Secretary	Richard Gething	9704 5417
	email: bdwwcsec@outlook.com	
Treasurer	Peter Angwin	5941 1272

**Committee**

Mark Bellis	0439 991 134
John McMahon	9796 1097
Martin Van Diemen	9707 5305
Ken Whitefield	9704 9701
Ken D. Barnes	0419 114 738
Paul Ryan	0400 538 577

Monthly demonstrations - *Vacant looking for help*  
 Functions Coordinator - *Vacant*  
 Newsletter Editor – *Elsie Hoare*  
 Public relations – *Len Preece*  
 OCF Contact group – *Len Preece*  
 Toy Coordinator – *Ken D. Barnes.*  
 Machinery maintenance supervisor. - *Brian Crowe*  
 Health and Safety Coordinator – *All committee members.*  
 Member’s welfare coordinator – *Ken Whitefield*  
 Kits for kids coordinator – *Ken Whitefield*  
 Farmers Market Coordinator – *Martin Van Diemen & Paul Ryan*  
 Special interest group coordinators – *To suit group*  
 Librarian – *Keith Towe*  
 Exhibition and Show - *John McMahon*  
 Gala Day coordinator - *Len Preece*  
 Our Lease - *Chris Drysdale*  
 Screws – *MartinVan Diemen*  
 Paint – *George Young*  
 Timber coordinator – *Martin Van Diemen*  
 Equipment authorisation approved members. - *Len Preece, Brian Crowe, John Damon, John Membrey and Bill Bradshaw.*  
 Mens' Shed coordinator - *Wayne Lucas.*

**All material for the Club’s monthly publication is to be submitted by e-mail [ricels@bigpond.com](mailto:ricels@bigpond.com) by hand, or by phone to the editor by the 15<sup>th</sup> of each month: Letters to the editor must be sent to the committee.**

**PLEASE NOTE:** Those members wishing to use the workshop on Saturdays other than Farmers’ Market Saturdays must make private arrangements with a key-holder. For safety reasons, there must always be two members present in the workshop whenever it is being used.

**Membership Fees:**  
 Individual Joining Fee - \$40.00  
 Single Membership - \$65.00  
 Family Membership - \$100.00  
 No Attendance Fee.  
 Tea & Coffee complimentary.  
 Members can pay either direct at club or by EFT bank transfer to WBC Berwick BSB 033 609, Acct # 41 6074. Please remember to put your surname as a reference.

**Workshops & Meetings:**

<b>Weekly</b>	<b>Hours</b>	<b>Activity</b>	<b>Leader</b>
Monday Morning	9.00 am – 2.30 pm	Toys -	Eric Guthrie
Tuesday Morning	9.00 am – 2.30 pm	Toys -	Ross Blackwood
Wednesday Morning	9.00 am - 1.00 pm	General -	Bill Bradshaw
Wednesday Evening	5.00 pm - 9.00 pm	General -	Bill Bradshaw
Thursday Morning	9.00 am – 1.00 pm	Fine W/work -	Brian Crowe
Friday Morning	9.00 am - 1.00 pm	General -	Len Preece
Saturday Morning	9.00 am - 1.00 pm	Farmers' Market supervisors -	Martin Van Diemen and Ken Whitefield or by prior arrangement on other Saturdays.

.....

Berwick Woodworkers wish to thanks **Gary Maas MP** State Member for Narre Warren South, and his staff for their support in printing this newsletter for us. **8783 6959.**

Berwick Woodworkers also acknowledge with gratitude the generosity of **Ephraim Finch** who has supported the club for many years with donations of top quality timber. Without Ephraim’s gifts, the work we do for local underprivileged children would be considerably curtailed.





**Joyce Hollis**

**SAD NEWS:** Long serving club members were saddened to learn, recently, of the passing, following a stroke, of **Joyce Hollis**, wife of **Peter Hollis**. Joyce was a familiar face to many of us as she participated in club events, accompanying Peter. Following Peter's sudden passing 4 years ago, Joyce kept in touch, attending some of the club functions. We send our best wishes to Joyce's family, especially daughter Louise who kept a special watch over her mother following Peter's passing.



**FARMERS' MARKET.** As Len has mentioned in his President's Notes, the October Farmers was well attended. Club member **Pat Mahoney** has sent me the photo at right, with the accompanying message:

*"We had a great Farmers Market lots of people but I just had to let these 2 in for FREE."*

**VIRTUAL SHOW & TELL:** Once again I have raided the posts on the club's Facebook pages, to show you how some of our members are keeping their woodworking skills polished.



**Wayne Lucas** says, *"I've put a number of dump trucks together during the lockdown using 7mm plywood. I've run out of wheels so hopefully we open again soon. Hope everyone is well."*

**Paul Ryan** offered us some advice and set us an example with his bowl.

*"Some more sawdust. Camphor laurel, hollowed out. 200mm x 70mm high, opening 120mm. Finish is EEE and Shelawax."*

Unfortunately woodworking hasn't been smooth sailing for **John McMahon**.

*"Sometimes I like to push the boundaries a bit, but I think I went a bit too far this time. I was trying to part off a piece of myrtle burl about 200mm diam. to create a base & lid for a new lidded container. I was using my thinnest parting tool to minimise the wood loss & maintain the continuity of the grain. I managed to cut in about 80mm before a combination of the tool rest overhang & flexing of the tool's blade caused a dig in with catastrophic results. Luckily no other damage, except to my ego. It was my favourite parting tool too."*







From **Pat Mahoney**: "This is my latest No. 3. horse doing its corona exercises. This is a head for a Hobby horse which will be fitted to a turned wooden post with a 100 diam wooden wheel. The timber is juluton which is used in pattern making it does not have any colour but is great for hand carving. Regards Pat."

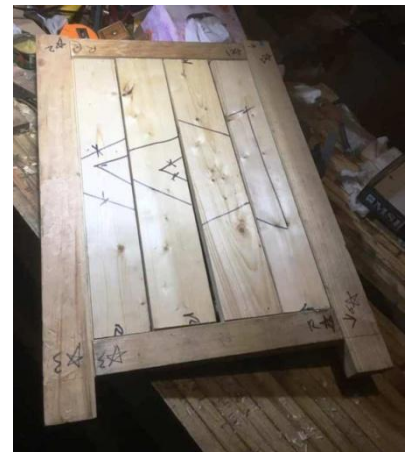
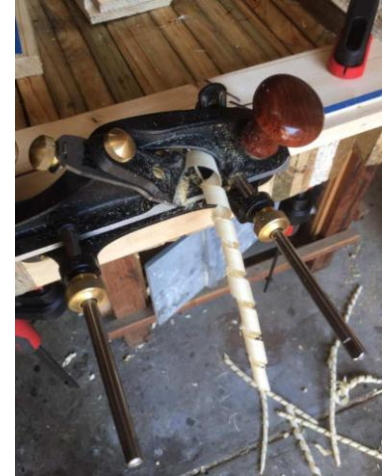


**Bernard Zhang** has acquired an admirable collection of hand planes and is enjoying perfecting his skill with them.

Berard says, "Stuff I've been up to: Picked up a few planes. Got a type 12 #4.

Got just over 1/2 cube pine dropped off at my house. Picked the pine up for \$1 a meter of 19x90 and \$2 for 90x45. And trying to make a cabinet and restored a plane for a friend up in Sydney.

Can't wait to be back at the club 😂😂. The timber for the cabinet took ages to dimension and saw."



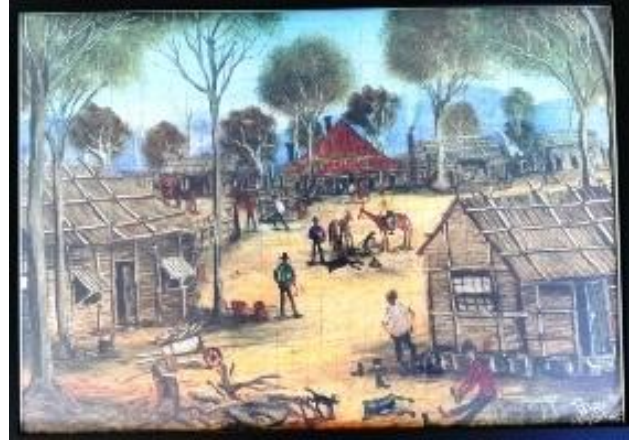
**Elsie Hoare**: "Back in business thanks to the generosity of **Alexander & Jillian Drysdale**. Following my comment in the newsletter for August, regarding a shortage of wood to finish my bunk beds, and also the filling for the mattresses and pillows for the dolls beds and prams that the club makes each year. **Alexander** cut, routed and sanded the pieces that I need, from some wood that he had stored at home and **Jillian** gave me two large bags of filling for the dolls bedding. The comment from the Drysdale camp: 'Can't let the dollies be uncomfortable' "



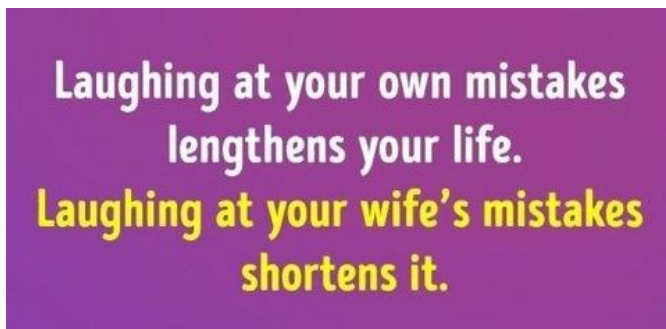


**Rick Hoare:** Never one to let a sunny spot go to waste, Rick has found time to enjoy a cuppa in between painting my bunk beds for me.

**Peter Angwin** has spent some time finishing this jigsaw puzzle of a painting by prohart.



### A WORD OF WARNING:



### AN OFFER TOO GOOD TO REFUSE:



### Some Strange Things to get your mind off politics.

1. A rat can last longer without water than a camel.
2. Your stomach has to produce a new layer of mucus every two weeks or it will digest itself.
3. The dot over the letter "i" is called a tittle.
4. A raisin dropped in a glass of fresh champagne will bounce up and down continuously from the bottom of the glass to the top.
5. A female ferret will die if it goes into heat and cannot find a mate.
6. A duck's quack doesn't echo. No one knows why.
7. A 2 X 4 is really 1-1/2" by 3-1/2".
8. During the chariot scene in "Ben Hur," a small red car can be seen in the distance (and Heston's wearing a watch).
9. On average, 12 newborns will be given to the wrong parents daily! (That explains a few mysteries...)
10. Donald Duck comics were banned from Finland because he doesn't wear pants.

**Reminder:** Our Club fees are now over due and can be paid directly into our bank account at Westpac BSB 033609 a/c No 416074. Be sure to add your name in the comments area. Alternatively you can send a cheque by mail to the club addressed to the Treasurer at Post Office Box 921 Berwick 3806.

That's about all for now. Until next time, take care and stay safe.