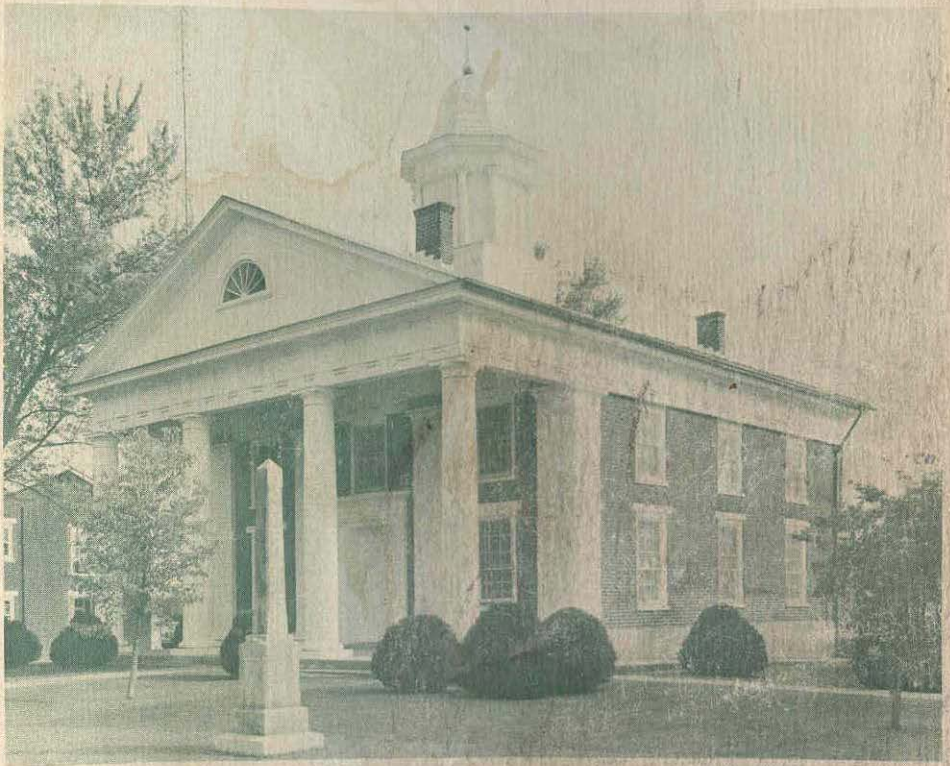


Greene County

MAGAZINE

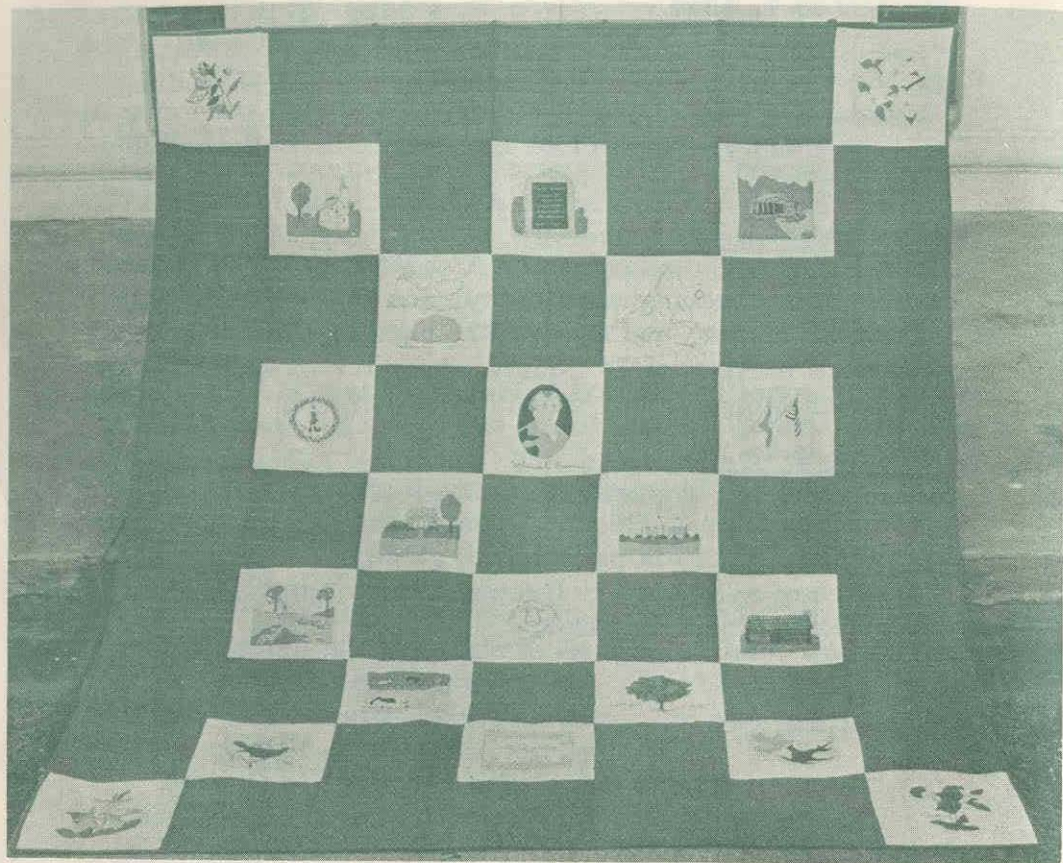
Quilt Portrays Historic Greene County Sites



GREENE COUNTY HISTORICAL SOCIETY

VOLUME 1 APRIL 1979

(pages 76-77)



The Greene County Historical Society Quilt

QUILT PORTRAYS HISTORIC GREENE COUNTY SITES
By Betty Ahearn

An exhibit of "old and new" quilts at Boar's Head Inn at Charlottesville, Virginia, inspired five talented women to create a quilt for the Greene County Historical Society. Utilizing a design by the Women's Club of Albemarle, Betty Ahearn, Ruth Moore, Jean Thurnau, Anna D. Watson, and Barbara Ford decided to fashion a quilt featuring scenes of Greene County.

A background material of green and white was chosen and purchased. At their next meeting, Mrs. Watson suggested the historical scenes to be exhibited in the quilt. The quilt size, 96 inches by 108 inches, was divided into twenty-two 12-inch applique squares, plus the background blocks. Several squares were assigned to each person with a November completion deadline.

The historical sequence of events of Greene County, Virginia, was carefully arranged around a center square of Nathanael Greene. The "Rucker Family" quilting frame was set up in Mrs. Watson's home and quilting was begun in earnest. Working from nine in the morning until four in the afternoon, the quilting was completed in nine days.

The quilt was donated to the Greene County Historical Society to endow a fund for a Greene County Museum. The efforts of these talented women were applauded when the Greene County Historical Society Quilt was displayed in the March 1979 exhibit at Boar's Head Inn.

The Greene County Historical Society Quilt was a work of art and a real labor of love.