



The Staff House Museum

P.O. Box 783 Located at 820 McKinley Ave. Kellogg, ID 83837
Web: <https://miningandsmeltingmuseum.org> PH: 208-784-1414

Shoshone County
Mining & Smelting
Museum, Inc.

~~~~~  
Volume 40

April 2023

Issue 1  
~~~~~

KELLOGG ALL-CLASS REUNION

July 21, 22, 23, 2023

Museum Special Edition



An Invitation to Visit the Museum this Summer

during the All-Class Reunion and get a

FREE Pyromorphite or Cerussite Mineral Specimen

The first 100 guests with an All-Class Reunion badge or Membership to visit the museum from July 21-23, 2023 will receive a FREE Pyromorphite or Cerussite mineral specimen. All of the crystals came from the 9 Level Jersey/Deadwood Vein from the Bunker Hill.

Cerussite is a lead carbonate. The name originates from the Latin word "cerussa" which means "white lead." Although here in the Silver Valley, the primary lead ore is galena, (with cerussite forming as a secondary mineral), it is the primary lead ore in many mines. Pure cerussite is white but often contains traces of galena, which will give it a gray to black color.

Pyromorphite is a mineral composed of lead chlorophosphate ($Pb_5(PO_4)_3Cl$). Its name is derived from the Greek words "pyr", (fire), and "morfe", (form.) The crystals tend to form hexagonal prisms but may also be found in botryoidal form, (from the Greek word "botrus" meaning "a bunch of grapes"), or as druses on a matrix. Typically found in green, yellow, brown and even gray colors, (continued on page 6)

IN THIS ISSUE

MUSEUM MEMBERSHIPS & DONORS

Museum Opening Dates

VIRTUAL MUSEUM TOUR

*The Museum's Story
Three Floors of Exhibits at the Museum
Outdoor Displays
Gift Shop ~ Books by Local Authors
Free Mineral Specimen Coupon
Welcome KHS Graduates*

MUSEUM NEWS & UPDATES

*Another INNOVIA Grant
Bunker Hill Pyromorphite & Cerrusite
Bunker Employee's Hobby*

MUSEUM MEMBERSHIPS

John & Teresa Baillie	Francie Lane
Ernie & Christine Baumeister	Robert Larsen
Colleen Braun	Duane Little
Mark & Mary Bren	Norman & Laura Little
Richard Chapman	Tom Lyons
Jerry & Mary Cobb	Felix & Liz Marcolin
Cheryl Gunter Conckerline	Steve McConnel
Harry & Linda Cougher	Dick & Sally Nordstrom
Heather Cowan	Bill & Cheryl Papesh
Christine Cox	Catherine Leeson Pelizzari
Richard & Antje Cripe	Gerald Peterson & John Berg
Keith & Lois Dahlberg	Mary Lou Pleas
Sue Dahlberg & Cleve Ashcroft	Mac & Francie Pooler
Josephine Davis	Becky Powers
Gerald & Teresa Duhamel	Ed & Terry Reynolds
Robert Dunsmore	Bob & Bonnie Robinson
Judy Etherton	Jack Salter & Katie Yoder
Susan Fayville	Ed & Leslie Sipp
Beth Ferraro	Kathy & Ted Slack
Rod & Jackie Fields	Ross Stout
Richard & Carol Griffin	Anthony Teske
David Grigg	Oradell Triplett
JoAnn Groves	Diane Trecker
Ray & Linda Guthmiller	Ed & Kathie Vang
John & Jodi Haire	Valerie Wade
Kurt Hoffman	Julie Whitesel Weston
Kimberly Johnson	Frank Winiarski
Jeff & Mary Kroft	Jack & Linda Wombolt
Art & Sherry Krulitz	Susan Jean Woods
Janet Lake	

BUSINESS SPONSORS

Ace Hardware	Silver
Hickey's Collision Repair	Silver
Pinehurst Storage	Silver
Mike Peacock Law	Lead
Rossi Insurance	Lead
Silver Valley Tire	Zinc
Silver Mountain Resort	Silver
Stovern Supply Co.	Silver
Twin City Furniture	Silver
West Fork Mineral & Timber LLC	Zinc
Yokes Fresh Market	Zinc

Our heartfelt THANK YOU to all of our members, local sponsors, and generous donors. It's your continued support that makes it possible to keep the rich history of the Silver Valley alive.

MUSEUM DONORS

Platinum(Pt) \$500+	Gold (Au) \$200+
Bill & Cheryl Papesh	Cheryl Gunter Conckerline
Jeff & Mary Kroft	
Jerry & Patricia Morgan	Zinc (Zn) \$50+
Julie Whitesel Weston	Keith & Lois Dahlberg
Silver (Ag) \$100+	David Grigg
Ernie & Christine Baumeister	Mac & Francie Pooler
Mark & Mary Bren	Claudia Thomas
Richard Chapman	
Jerry & Mary Cobb	Lead (Pb) \$25+
Harry & Linda Cougher	Richard & Antje Cripe
Sue Dahlberg & Cleve Ashcraft	Beth Ferraro
Gerald & Teresa Duhamel	JoAnn Groves
Robert Dunsmore	John & Jodi Haire
Judy Etherton	Dick & Sally Nordstrom
Gerald Ford	Ross Stout
Ray & Linda Guthmiller	Ed & Kathie Vang
Art & Sherry Krulitz	
Tom Lyons	
Mac & Francine Pooler	

MUSEUM OFFICERS & BOARD

Officers

Karen Ryan – President
 Diane Trecker – 1stVP
 Bob Dunsmore – 2nd VP
 Tony Teske – Treasurer
 Rick Chapman – Secretary

Board Members

Sarah Ash
 Jackie Fields
 Kurt Hoffman
 Kim Johnson
 Duane Little
 Sade Lortz
 Mary Lou Pleas
 Oradell Triplett

Museum Seasonal Schedule and Hours

Open May 27, 2023 through September 4, 2023
 Wednesday - Sunday, 11:00a to 4:00p
FREE ADMISSION during the Summer Season of 2023
 Spread the word and invite your friends to a Museum Day!



The Bunker Hill Staff House

The Museum's Story

The house, currently located at 820 W. McKinley Avenue in Kellogg, was constructed in 1906 as the residence for Stanly A. Easton and his bride, Estelle Greenough of Missoula, Montana.

Easton had become general manager for the Kellogg operations of the Bunker Hill & Sullivan Mining & Concentrating Company in 1903. He was the son of an Episcopalian Minister in Santa Cruz, California, and graduated from the University of California at Berkley in 1894 with a degree in Mining Engineering. For 55 years Easton rose through the management of Idaho's largest mining enterprise to President in 1933 and Chairman of the Board until 1958. Bunker Hill was Idaho's largest industrial employer when Easton retired to live in Santa Barbara, California, where he died in December 1961.

The two story Easton residence was initially constructed west of the Bunker Hill Main Office at 912 W. McKinley. It was moved to its present location in 1940 when space was required to construct a residence at 906 W. McKinley for J. B. (Barney) Haffner, newly hired as the Company's General Manager.

The Easton family moved to 1321 E. Lakeshore Drive in Coeur d'Alene in 1923 with their three daughters. Their Kellogg residence was then converted to a residence for single Bunker Hill staff members and given the name "Staff House."

After the Staff House was moved to 820 W. McKinley in 1940, further modifications were made to create a full basement to be used for Company management meetings and social activities such as wedding receptions and holiday parties.

When The Bunker Hill Company was closed down at the end of 1981, following 94 years of operating as one of the larger mining and smelting complexes in the U.S., the Staff House sat idle without heat until 1986.

The Bunker Limited Partnership, then owners of the idle Bunker Hill operations, were about to tear down building when the newly created Shoshone County Mining and Smelting Museum, Inc., dispatched Board members Jim Miller, Sr., Doris Helmsley and Ray Chapman to see if the Staff House could be given to this group. Jack Kendrick, President of the Partnership, agreed to give the museum group a tentative agreement to use the building.

With a lot of hard work by Museum Board members and other volunteers, the Staff House Museum was able to open the doors in the summer of 1986 with three rooms of exhibits. Kendrick, expressing satisfaction with the progress that was being made to repair the building and create a satisfactory museum, turned over title to the house and property for \$1.00 later that year.

Work continued from this time forward to repair the inside damage to the building and restore it to an attractive tourist stop. Several large donations were acquired to help install a furnace to provide heat through the existing hot water radiator system, a new roof was installed, and the building painted. Additional exhibit rooms were developed and within three years displays occupied a dozen rooms on the two floors as well as the basement.

In 1990 Bunker Limited Partnership contributed the 1899 Nordberg Air Compressor which was moved to ground behind the Museum. Once again, many hours of



volunteer time were required to prepare the base for this 73.5-ton old compressor and to completely disassemble and move it 400 yards and then reassemble the old machine.

Three Floors of Exhibits at the Museum

First Floor

Entry Hall – We invite our guests to sign the Guest Book. Donations are optional but \$5.00 per adult or \$15.00 per family is suggested. You will find large framed original photos from the Barnard-Stockbridge collection depicting the Mother Lode Gold Mine in Murray, the original owners of the Hercules Mine in Burke, the Bull Pen during the mining wars of 1899 and a mine crew "double jacking" by candlelight.



Current Bunker Hill Mining Operations/Kellogg's Johnny Appleseed – Visit our newest exhibit and see the latest on the Bunker Hill Mining Company's efforts to bring this historic mine back into production. You will also see how University of Idaho graduate student Ed Pommerening's research and leadership transformed the barren hillsides surrounding Kellogg into the lush green forest we see today.

Kitchen & Domestic Room – Here you will see items found in the typical home in the early 1900s.

Items include an ice box, monitor top refrigerator plus various appliances, gadgets, tools, dishes & jugs, in addition to local memorabilia and restaurant menus.



Hallway Alcove – This contains memorabilia from the once annual Miner's Picnic that used to include a carnival, mining & logging contests, games and a pageant & dance.

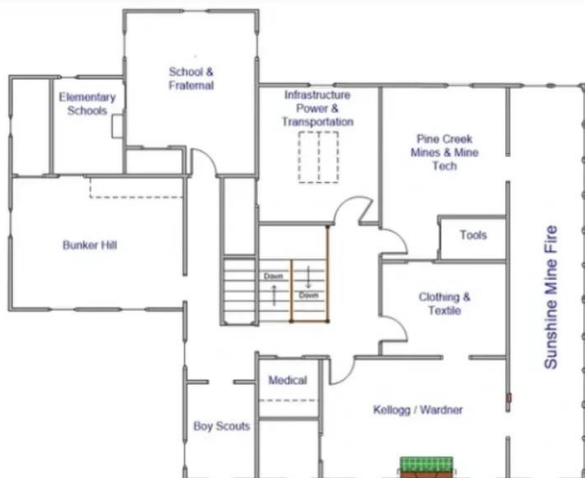
Jackass Ski Bowl to Silver Mountain – See how a community sponsored ski area called Jackass Ski Bowl became the destination resort of Silver Mountain.



A retrospective of the history of Silver Mountain continues its run; tracking the grassroots inception of the Jackass Ski Bowl through to today's multi-seasonal resort.

The Bunker Hill Staff House

Second Floor



Medical Room – This small display shows some of the tools employed in the early days of medical care in the Valley.

Scout Room – Even though Mr. Easton only had daughters he was a big supporter of Boy Scouts. He helped found the Shoshone County chapter and had a summer camp on Lake Coeur d'Alene named for him. The displays in this room include a collection of vintage Boy Scout Handbooks, a copy of the Shoshone County Scout Charter, uniforms, badges and scout equipment.



Scout Room

Bunker Hill Room – Here we find a timeline of the company from ore discovery to present day. Examples of the primary products produced and pictorial description of production processes from mining to finished products. A display cabinet holds artifacts from the daily operations and special events. In this exhibit you can view the scale that weighed all the silver refined at the smelter and a collection of artifacts from the Bunker Hill.



Bunker Hill Processes and Products

Elementary School Room – More than a dozen local elementary schools are pictured that used to dot the west Valley. Only photos remain of many of them. Take a glimpse at a bygone era when a chalk board and a pointer ruled the classroom.

School and Fraternal Room – Kellogg High School memorabilia is on display together with items from the local YMCA, Industrial Union, and several fraternal organizations. Check out marching band uniforms, trophies, K-Log annuals, and photos from the early school days of the Silver Valley.



Photos of Early Schools in the Valley

Infrastructure Room – Maps, photos and text narratives describe the Yellowstone Trail as it passed through North Idaho. Other photos and text describe early railroads and the bringing electricity to the Valley. You can look down on the 1899 Nordberg compressor from the window at the back of the room.

Pine Creek Mines/Mine Tech Room – Here we have an overview of the various mines that have occupied the Pine Creek drainage above Pinehurst described in photos, maps and artifacts. The history of work lights used in the local mines together with assay equipment and claim documents share this space.



Lighting the Way Underground – From dim tallow candles to bright LED lamps

Vintage Tool Room – This small space is home to a wide variety of hand tools used in the mining and timber trades of the late 1800's and early 1900's.

Sunshine Memorial Room – Here we find the names and short bios for each of the 91 men who perished in the 1972 fire.



Remembering the 91 Men Who Were Lost

A timeline shows how the tragedy unfolded and map shows the locations of events. A signal cord and code chart used in calling the hoist is found at the north end of the room together with a breathing apparatus used in the rescue effort.

Kellogg/Wardner Room – Find photos and graphics illustrating how Kellogg grew from Wardner as the Bunker Hill mine's mill moved down to the river and the mines main porthole relocated to the north slope of the mountain.

Textile Room – Clothing and textile items from the late 1800s and early 1900s are on display. Look back on a time when most women only had one or two good dresses and all the ladies wore hats. Also on display are the 100 year old Stuart Shawls,

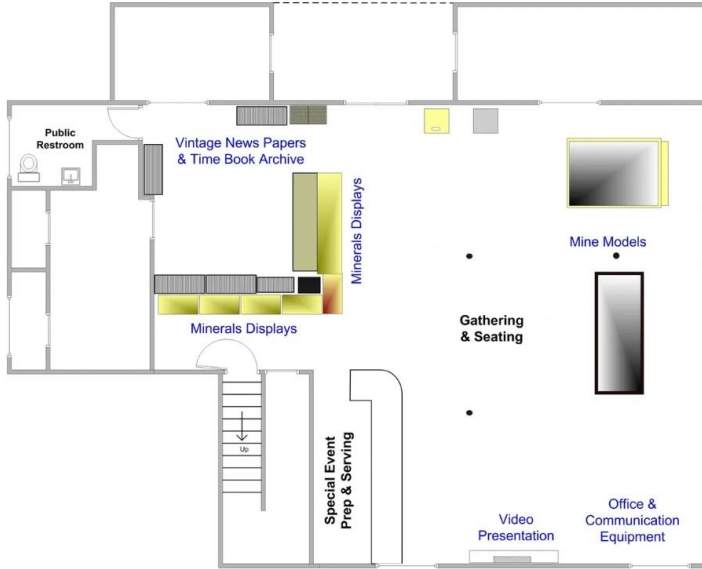


Textile Room

donated by the family of Edwin E. Stuart. Read the story about how the two shawls, one black with silver inlay and the other white with gold thread, were given to the Stuart family by Pancho Villa, the famed Mexican revolutionary for a good deed done for his young bride.

The Bunker Hill Staff House

Basement



Display Cases – Examples of various minerals from around the world and here in the Valley.

Wall Near Back Door – Fluorescent Minerals are showcased in a pedestal display showing their appearance under normal and black light. (Press the black button to see the minerals fluoresce in vivid colors under black light.)

Bunker Hill Mine Model – A truly impressive three dimensional model of the famous Bunker Hill Mine. Each of the 29 levels is represented on clear Mylar showing the maze of tunnels and stopes that comprised this storied mine. Ore bodies are shown in red and major faults are represented in blue. Each level (layer) is 200 feet apart. Thus this model represents an area of ground about 1 ½ miles square by 1 mile deep.



Bunker Hill Mine Model

Seven Mine Model – Though less detailed than the Bunker mine model; this amazing model combines and coordinates the maps of seven different mines stretching from Bunker Hill here in Kellogg to the Galena east of Osburn. Mines represented include Bunker Hill, Crescent, Sunshine, Con Silver, Coeur d'Alene, Coeur and Galena.

Seismograph – This piece of equipment was used to monitor seismic activity that could warn of rock bursts in deep mines. When the ground became active; miners were kept away.

Wall Maps – Several large wall maps are displayed showing the numerous mining claims in the Valley, mill sites from Pinehurst to Mullan, a cross section of the Bunker Hill Mine and a topographic relief map of North Idaho.

Vintage Office Equipment – Several examples of vintage typewriters, adding machines are on display together with a Western Union stock market ticker, an early phone switch board and phone testing equipment.

Time Books* and Vintage News Papers – We have an extensive collection of time books for the Bunker Mine and Smelter dating back to the early 1900s. While you need permission* to use the time books; a collection of vintage local newspapers can be browsed at any time.

Outdoor Displays

Yellow Man Car – This was used to transport miners to work in the early days of the two mile long Kellogg Tunnel at the Bunker Hill mine.



Pad # 1 – Lead Smelter/Silver Refinery – a) Hand operated slag pot b) Retort tapping cart (silver rich bullion) c) Cupel litharge cart (lead oxide) d) Molds for casting lead pigs and 1,000 oz silver bars

Pad # 2 – Small Mine Machinery – a) Anaconda air hoist b) Ingersol-Rand small tigger (for hoisting) c) Coeur d'Alene Hardware junior hoist d) Shaft dewatering bucket

Pad # 3 – Smelter/Lead Refinery – a) Five ton bullion pot (used with crane) b) Hand propelled slag pot (used at electric furnace)



Pad # 4 - Aerial Tramways and Ore Haulage Items – a) Bunker Hill tramway buckets (these used to pass over Wardner) b) Sydney Mine tramway bucket & cable guides (4 ½ mile long tram) c) Frisco Mine tram bucket (from Burke Canyon) d) Old iron tire wheelbarrow e) Acetylene gas generator

Pad # 5 – Miscellaneous – a) Hand forge (Pine Creek mines) b) 18 cu. ft. prospector's ore car c) Drill, drill bar and arm, miscellaneous drill steel d) Track and screw jacks

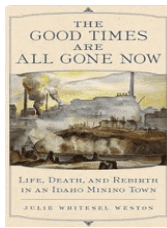
Nordberg Air Compressor – This was installed in 1899 to supply compressed air for the Kellogg Tunnel project. It continued to provide compressed air to the mine until the 1940s. It was originally powered by steam, then water and finally an electric motor. The compressor was relocated from the old powerhouse to its current location in 1990.



The Bunker Hill Staff House

Gift Shop

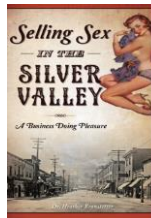
We invite you to visit our gift shop and check out our selection of books by local authors and Silver Valley history. Take home a souvenir from our collection of minerals, rock specimens, Bunker Hill lead, jewelry and more. Consider becoming a member of the museum!



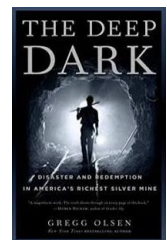
Life, Death, and Rebirth in an Idaho Mining Town – Local author, Julie Whitesel Weston left her hometown of Kellogg, Idaho, but eventually it pulled her back. Much of this memoir of place set during the post-McCarthyism era. Weston considers how certain people made a difference in her life, especially her band director, her ski coach, and an attorney she worked for during a major strike. She explores her relationship with her father, a hardworking doctor revered in the community but feared at home.



Growing up in North Idaho - This book, by local author Roberta Brainard Garner, combines history, family drama, and coming of age set in the Silver Valley's thriving 1960s. Roberta's father is from a pillars-in-the-community family, her mother a miner's daughter. After years as a dedicated elementary school teacher, her mother becomes as unconventional as they come, eventually going to prison. PAY THE PIPER is a deep emotional dive into childhood and family relations.



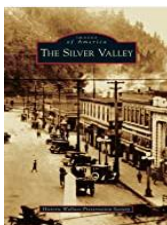
The Business of Doing Pleasure - Wallace became notorious for labor uprisings, hard drinking, gambling and prostitution. Until 1991, illegal brothels openly flourished because locals believed that sex work bolstered the economy, so long as it was regulated and confined to a particular area of town. The madams enjoyed unprecedented status as influential businesswomen, community leaders and philanthropists.



Disaster and Redemption in America's Richest Silver Mine - On May 2, 1972, 174 miners entered Sunshine Mine. There were many safety concerns at the Sunshine, but fire wasn't one of them. The company swore the mine was unburnable, so it didn't seem possible a fire could be burning over a mile underground. Over half of the miners who entered were trapped underground, too deep in the mine to escape. The only survivors, Ron Flory and Tom Wilkinson were left in total darkness. Ninety-one men do not make it out. A must read for anyone from the Silver Valley.



Teddy Roosevelt and the Fire that Saved America -Read about the struggles of the overmatched rangers against the 1910 fire that obliterated over 3 million acres of virgin timber in Northern Idaho and Western Montana, and the larger story of president Teddy Roosevelt and his chief forester, Gifford Pinchot. They create the idea of public land as our national treasure, owned by every citizen. The heroism shown by his rangers turned public opinion permanently in favor of preserving our forests.



Images of America - Along with Wallace, the valley encompasses many other small mining towns, such as Mullan, Silverton, Osburn, Kellogg, Smelterville, Pinehurst, and Kingston, with diverse histories that are both humorous and heartbreaking. It features the Cataldo Mission, Idaho's oldest standing building, built by the Jesuits and the Coeur d'Alene tribe in 1848.

Additional Books Available at the Gift Shop

Stories from the Silver Valley, Doc McCoy
Moonshadows, Julie Weston
Rock Burst, Burt & Marie Russell
Green Bananas, Patrick Rummerfield
Uncle Bunker, Ray Chapman

DB & Me, Kathy V. Brainard
Lana Turner, Cynthia Ackley Nunn
Room for the Summer, Fritz Wolff
One Flaming Hour, Mike Blackbird
Death of a Proud Union, Art Nolan

~~ FREE ~~
**MINERAL
SPECIMEN**

Pyromorphite or Cerussite
to the first 100 museum visitors
on July 21, 22, or 23

Bring in this coupon or show
your All-Class Reunion
badge.

First come, first served.
One Mineral Specimen per person.

**WELCOME HOME
KHS GRADUATES**

We hope that all of you take the opportunity to stop by for a visit to a unique local attraction that showcases not just its original owner, The Bunker Hill Company, but also the many parts of Kellogg's long history that we have on display, thanks to the work over the years of many volunteers, members, and donors.

As has been mentioned by the newsletter's author, KHS graduate and Board Member Diane Trecker, we are very dependent on these people to continue to showcase Kellogg's history, particularly for our larger projects. We would like to take this opportunity to encourage all returnees to support the museum in any way that they can, as a member, a donor, or a volunteer.

**The Staff House Museum
Board of Directors**



Another INNOVIA Grant and SLFRF Funding Secured

In late March of last year we were notified that the INNOVIA Foundation had funded just over half of phase 5 of our window replacement program for which we were seeking a grant. Windows were ordered and after a long wait they finally arrived last month. They will be installed in the School & Fraternal exhibit room when weather permits.

INNOVIA was formerly known as the Inland Northwest Community Foundation. This is the third time INNOVIA has provided funding for the Museum. In 2016 they funded the replacement of our boiler that quite literally allowed us to stay in operation. Then in 2018 they funded the replacement of windows and exterior siding at the east side of the Gift Shop.

We remain exceptionally grateful for the continued support INNOVIA has given us. Early this year we got approval for funding toward the repainting of the exterior of the Staff House. This is from the Shoshone County and State Local Fiscal Recovery Fund (SLFRF). This is part of a Federal fund that is aimed at helping to offset the economic impact of the Pandemic on local communities and is administered by the County Commissioners. This will cover our expenses up to \$22,500.

These funding sources are critical to keeping the Museum open and in good repair as our normal operating budget and does not cover the costs of such expensive maintenance projects.

Bunker Hill Pyromorphite & Cerrusite

(continued from front page) Bunker Hill pyromorphite is unique, as its inclusions of arsenic and iron, often give the pyromorphite a color range of bright red and orange, in combination with the typical yellows and greens that you find in pyromorphite from other parts of the world.

As for the value ranges of the specimens, the majority of the cerussite specimens would be around \$5 on the low end, and some of the nicer specimens would likely fall in the \$20-\$80 dollar range.

The pyromorphite specimens valued between \$20-\$50 dollars. The huge thing to crystal collectors about Bunker Hill pyromorphite is that a.) It's unique in terms of the colors, (you don't find those red and oranges in other pyromorphite specimens) and b.) There hasn't been any of it brought out in over 30 years, and there is no guarantee that there will ever be a significant amount of it ever brought out again.

Visit the museum from July 21-23, 2023 and get your FREE crystal.

Bunker Employee's Hobby on Display in Staff House Basement



Here we see Bunker Hill Pumpman Don Wood showing off one of his rock tables. This, from an article about his rock hound hobby featured in the September 1970 issue of the Bunker Hill Reporter. After getting interested in the hobby while laid up in the hospital he took classes on it at the YMCA.

From there his interest flourished and one offshoot was

his making small tables for friends and family. One of these tabletops is on display in the basement of the Staff House near the Time Book collection.

While Don took a Rock hounding class at the YMCA; many others were offered as well. These included typing, welding, drafting and bookkeeping to name just a few. While the Y offered the means to stay physically fit, it also offered training for the mind as well.

*The museum is governed by an unpaid board of directors elected from the current membership. Members-in-good-standing who are interested in becoming a board member or officer should contact any of our officers or board members. Board officers serve for one year and board directors serve three years. Elections are held each April at the Annual Meeting. The museum board and members meet the 2nd Wednesday of each month at 5:30p at the museum. **WE WELCOME ANYONE WHO IS INTERESTED TO ATTEND AND NEED VOLUNTEERS!** ~ The Museum Officers & Board*

