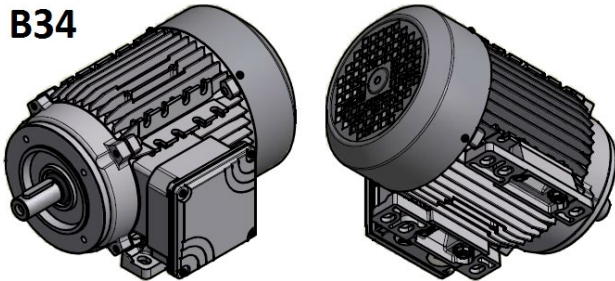


## HOW TO IDENTIFY THE STYLE OF FLANGE

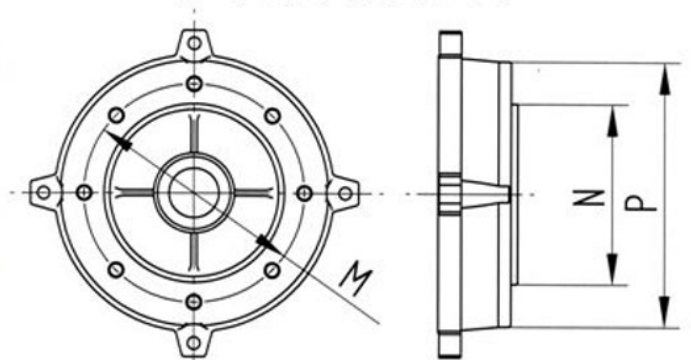
### “C” B14 Flange: Inner flange

- Flange diameter is smaller than that of the motor
- Mounting holes are threaded
- “N” dimension is the most vital (Spigot)
- Sometimes labeled as B34 or C Face

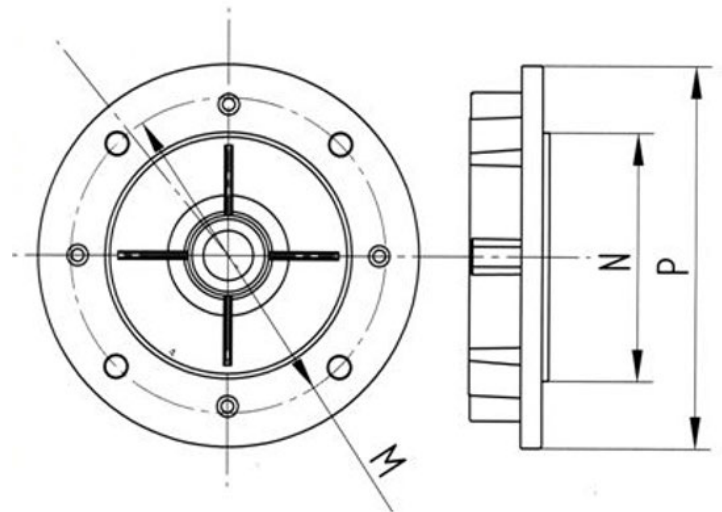
B34



“C” FLANGE B14



“D” FLANGE B5



### “D” B5 Flange: Outer flange

- Flange diameter exceeds that of the motor
- Mounting holes are not threaded
- “N” dimension is the most vital (Spigot)
- Sometimes labeled B35

B5

