



Optalign Complete

AMS-Based Water Conditioner and Surfactant System with Oil Based Drift Control

Optalign Complete is an all-in-one approved tank mix partner for Enlist One®, Enlist Duo®, Liberty® Herbicide and Roundup®.

Optalign Complete is a blend of water conditioning agent (ammonium sulfate), surfactants, drift reduction agents and humectants. Optalign Complete contains antifoaming agent to minimize foaming.

Optalign Complete may be used with pesticides that either require or suggest the use of surfactants and/or ammonium sulfate as the recommended adjuvant.

RECOMMENDED CROPS

Corn, soybeans, wheat, edible beans, grain sorghum, sugar beets, potatoes and alfalfa

FEATURES & BENEFITS

- **Increased weed kill**
- **All-in-one** technology with superior performance
- **Ultimate convenience** at the spray trailer
- **Designed for** glyphosate, glufosinate, Enlist and other herbicides requiring a high load of AMS
- **Approved tank mix partner** for Enlist One, Enlist Duo, Liberty® and Roundup
- **Pre-dissolved** liquid ammonium sulfate means reduced nozzle plugging and sediment and performance
- **Creates ideal droplet** size and spray pattern for optimum coverage

DIRECTIONS FOR USE

Always follow label instructions.

Use Rate: Optalign Complete should be used at a rate of 1 gallon per 100 gallons of spray volume with Roundup and Enlist. Use a rate of 2 gallons per 100 gallons of spray volume with Liberty.

Storage: Store in a closed, dry area and in original container and keep sealed.

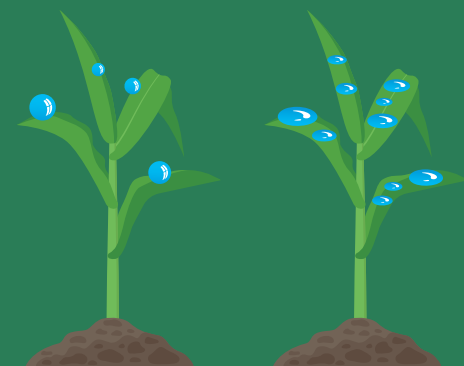
Packaging:

- 2x2.5 gallon jugs
- 250-gallon totes

ACTIVE INGREDIENTS

Ammonium Sulfate, Humectant, substituted fatty alkylammonium alkylcarboxylate, alkyl poly glucoside, modified vegetable oil, amine salts of organic acids, organic acids.....	41.6%
Constituents ineffective as spray adjuvant.....	58.4%
TOTAL.....	100%
Components exempt from the requirement of a tolerance in CFR 40 180, 920, 930, 940, 950, 960 & 25B	

Decrease driftable fines by 25% and create the perfect droplet size for optimal coverage.



Without

With Optalign Complete