

Cancer Awareness through Research & Education (CARE) CARE Board of Directors 2023 - 2025



Jill Porcellato
CARE Board, Chair 2017 - Current
(2015 – present)

Jill has been a Desert Mountain Member since 2013. She and her husband Larry moved here in 2014 to build their dream home. They fell in love with Desert Mountain as soon as they drove through the gates, and decided on their first visit that this is where they wanted to retire.

Jill began volunteering for CARE two weeks after moving here, wanting to get involved with the community, while building their new home. Jill served on several CARE committees starting in 2014 and joined the board in 2015 and was elected Chair of the Board of Directors in 2017. She is passionate about CARE's mission to provide funding, saving lives and creating hope through world-class cancer research at Mayo Clinic of AZ and HonorHealth Research Institute. She is extremely proud of the results they have achieved with such a caring community.



Derek Hill
CARE Treasurer 2020 – Current

Derek and his wife Rhonda have been Desert Mountain members since 2006. They became full time residents in 2014. Derek and Rhonda have been CARE donors since 2015 and Derek became a CARE Board member in May 2020.

He got involved in CARE because both he and Rhonda are cancer survivors and he was impressed with the results of the research that CARE has funded. He joined the Board to continue CARE's legacy of promoting cancer awareness and education and funding breakthrough cancer research and treatment initiatives to enhance the quality of life of those affected by cancer.



Regina Ryan
CARE Secretary
(2023 - present)

Regina and her husband, John, bought their first home in Desert Mountain in 2014. Having visited for several years for John to play in Mountain Mania, they knew they had found their retirement spot.

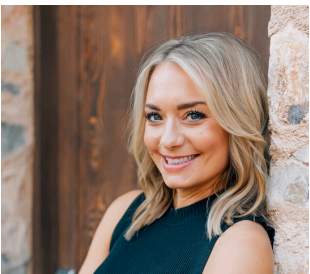
Regina and John were very impressed to learn that Desert Mountain members had created a charity and have been able to sustain it for so long. Regina lost her dad to cancer when he was 45 and the more she learned about CARE, the more she felt that it was an organization that she would like to contribute to. Regina was honored to join the board in the role of Secretary and looks forward to ensuring that the legacy of the founding members continues.



Michael Blaszyk
CARE Funding Director, 2021 - current

Michael and his wife Leslie have been members of Desert Mountain since the fall of 2013. They moved into the home they built in Saguaro Forest in 2016. Michael and Leslie chose Desert Mountain because of the vast array activities that they could participate in. The hiking trails sealed the deal for them.

Michael is a relatively new member of the CARE Board although he and Leslie, who previously served on the funding committee, have been active supporters since moving to Desert Mountain. Michael's career in Health Care made engaging in the important work of CARE a natural for him. Michael is deeply committed to finding ways to end the ravages of cancer and support the Desert Mountain community.



Amanda Bruen
CARE Program and Donor Development Director
2023

Proudly joining the CARE Board of Directors in May of 2023. Currently, a valued member of The Laura Lester team at the prestigious Silverleaf Realty in 2019, Amanda had already established a strong reputation in the luxury lifestyle market. Her impressive career included successfully managing special event sales and membership relations for the Desert Mountain Club and Omni Montelucia.

Amanda has always been passionate about philanthropy and giving back to her community. Being on the event planning side of the philanthropic scope, Amanda is thrilled to join the Desert Mountain CARE Board of Directors. In years past, she's worked with non-profit organizations such as research and awareness for Lyme disease and coordinating fundraising events for children with special needs. Cancer impacts everyone's lives at some point, whether through a parent, friend, co-worker, or relative, and Amanda is honored to be a part of such an important and impactful organization. The fact that Desert Mountain CARE takes place in her hometown and supports her local community is just a bonus.



Mary Moase
CARE Finance Committee
(2021 - present)

Mary and her husband Chris have been Desert Mountain members since 2019. Chris and I chose Desert Mountain because of the unbelievable variety of golf courses along with the other amenities that Desert Mountain offers. We love to bike and hike; Desert Mountain was the obvious choice.

Mary is a new member to the CARE board. Talking with a friend while playing golf last year led to a conversation about giving back to the community now that she was retired and had time to be able to commit to an organization. She started talking about CARE, what a wonderful organization they are and that Mary should get involved. CARE's mission is so important and relevant, as we all are touched by this horrific disease, it was an easy decision for Mary to become engaged. Supporting research is our best opportunity to win the fight against cancer.



Sylvia Owens
Historian, 1997 - Current

Don and I discovered Desert Mountain in the late 80's in Seattle, Washington. After playing a couple of the course, it was a "no brainer" to buy a lot and prepare for retirement. When we retired in the early '90s, Desert Mountain was still a small community.....it was a time when you knew everyone on campus.

When I was diagnosed with breast cancer in 1997, the community came together to help and support my journey through all the treatments. Cancer had touched so many loved ones, so we decided to help raise money to fight cancer. This was the birth of CARE. Our first golf event had 102 participants and raised \$25,000. The money went to Mayo Clinic of AZ Breast Cancer project.

26 years later, CARE has raised over 10 million dollars for cancer research, funding projects at Mayo Clinic of AZ, and HonorHealth Research Institute. CARE has grown because of the commitment and generosity of Desert Mountain Members and the management team and staff. CARE is a 501(c)(3), with a year around Board, and a Funding Committee whose members have a strong medical background.

It gives me chills to think of the impact our community has made in cancer research. Members Making Miracles!