

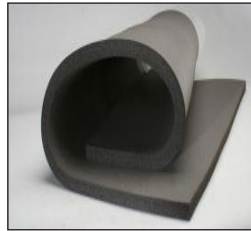
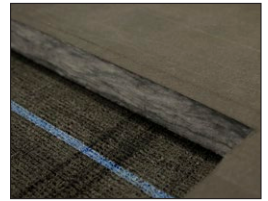
VULCAN® 1600 WATERJET CUTTING SYSTEM

Lockformer's® Vulcan® plasma cutting systems have been shipped around the world for 30 years, so you can trust the Vulcan® 1600 WaterJet to provide you with superior performance including the latest technology.

The Vulcan® 1600 is designed with traditional Lockformer quality and reliability, to eliminate the duct liner bottleneck in your shop while reducing the labor associated with this process.

HVAC contractors rely on Vulcan's® insulation cutting software and table to increase shop productivity, reduce waste, and improve their bottom line.

Model Details



MODEL

**VULCAN® 1600
WATERJET**

SOFTWARE/ COMPUTER SYSTEM

Windows 10® Professional
Dell PC with 19" Monitor & Printer

MACHINE CONTROL

7590 CNC-TS & 15" Color
Graphic Industrial Touch
Screen

CUTTING/PLASMA UNIT

KMT STREAMLINE SL-VI 15-hp
WaterJet intensifier

MODEL

PNEUMA-WRAP BRAKE

CAPACITY

DEPTH OF POCKET

Pneumatic drive or the
clamping beam and the
folding beam with automatic
return

OTHER

N/A

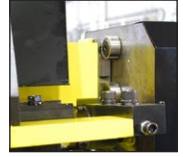
PNEUMA-WRAP BRAKE

(Formerly known as Lion Machinery)

The ideal machine for forming L, flat, wrap, TDC® and TDF® duct.

- Redesigned tooling to accept any size duct from 7" up to standard 5' without adjustment
- Redesigned beam to clear pins on lined duct
- Rugged Welded Steel Construction
- Maintenance-Free Bearing & Guides
- Pneumatic Drive For Clamping Beam with Automatic Return
- Pneumatic Drive For Folding Beam with Automatic Return
- Pneumatic Operated Pedal Control machine design:
- Dial-Adjustable Bend Angle 0 to 90°
- Automatic TDC®/F® Notch Locator
- Front Adjustable Support Apron
- Safety Interlock Controls

Model Details



CUTTING CAPACITY	CUTTING AREA & TABLE CAPACITY	SPEED	APPROXIMATE DIMENSIONS
Up to 4" Fiberglass or 2" Foam Insulation	5' x 10' Standard 5' x 20' Optional Table Capacity: 2,500 lbs.	3,000 IPM Max Positioning Speed	Length - 168" Width - 96" Height - 63" Weight - approx. 4,500 lbs
AIR CONSUMPTION/MOTOR/VOLTAGE		SPEED	DIMENSIONS/WEIGHT
Length - 58.5" Width - 24"		11 CFM @100 PSI	Height - 41" Weight - 3,500 lbs.