

Consistency and better investment decisions - capital budgeting,  
financial modelling and valuation

DataPartner Oy  
Jens Westerbladh, CEO & Co-Founder

invest  
FOR EXCEL

# About DataPartner Oy



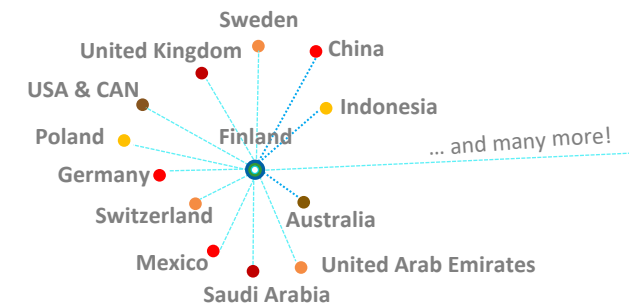
## ABOUT

- Family business established in 1987 in Porvoo, Finland
- Leading provider of capital budgeting software
- Microsoft Certified Partner



## INTERNATIONAL PRESENCE

- 35 Business Partners internationally
- >1 850 customers in 63 countries

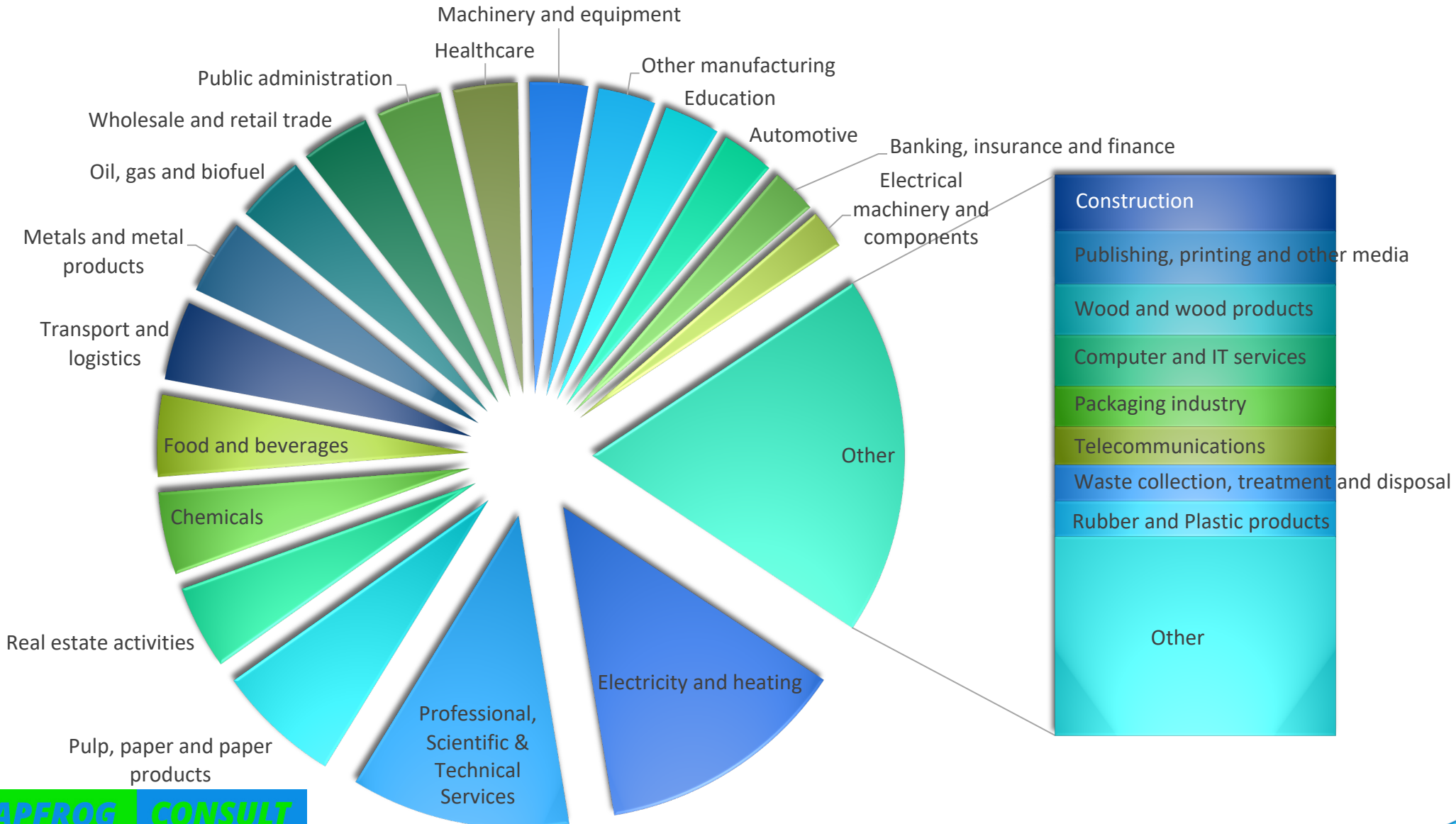


## OFFERING

- Main software product: **Invest for Excel®**
- **Training** and **consulting services** in the field of financial modelling

invest  
FOR EXCEL

# Invest for Excel<sup>®</sup> customers by industry



# Customer references



DataPartner

Automotive, Machinery & Equipment	Consulting & Engineering	Oil, Gas & Biofuels	Power & Heat	Metal	Forest & Paper	Food and Beverage	Other
Mercedes-Benz	AFRY AF PÖYRY						The Southern Co-operative
DAIMLER TRUCK							
WÄRTSILÄ						Real Estate	
				Transport & Logistics			
Rolls-Royce							
AGFA Agfa							
EQTEC			>160 total				
Lenze							
PRÜDESA							



# Invest for Excel<sup>®</sup> in Education & Research



UNIVERSITY OF GOTHENBURG  
SCHOOL OF BUSINESS, ECONOMICS AND LAW



HÖGSKOLAN PÅ ÅLAND  
ÅLAND UNIVERSITY OF APPLIED SCIENCES



SZKOŁA GŁÓWNA HANDLOWA  
W WARSZAWIE  
WARSAW SCHOOL OF ECONOMICS



BABES-BOLYAI  
UNIVERSITY



invest  
FOR EXCEL

# Invest for Excel<sup>®</sup>

Software for capital budgeting and valuation

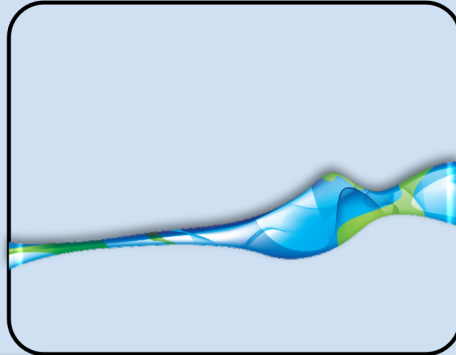
## profitability



To determine the value of businesses, projects and investments based on DCF methodology

→ select projects with highest return on capital

## standards



To guarantee the consistent approach in evaluation of projects' profitability

→ providing standards for organizations and individuals

## flexibility



To integrate technical calculations with financial projections

→ have a grip on transparency, comparability and correctness

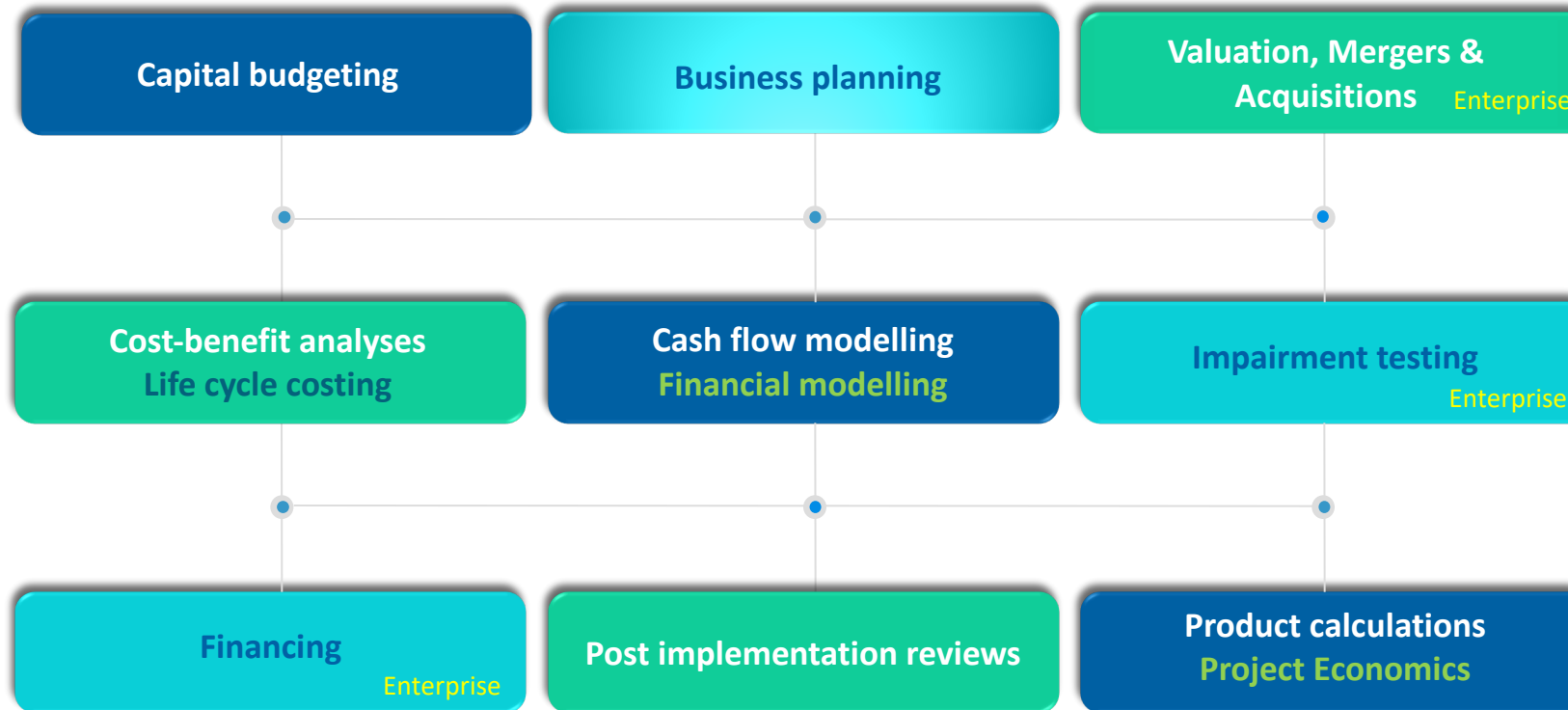


Take responsibility only for calculations you can trust. Avoid false decisions.

→ Feel appreciated, sleep better at night

# Invest for Excel - functionality

Invest for Excel serves managers, investment analysts, controllers, investors and also production-, marketing- and engineering teams in:



# Invest for Excel<sup>®</sup> - for what purpose?

- Investment appraisals
  - is a proposed investment profitable?
  - what is the optimal timing to replace old asset?
  - which technical solution/supplier is the most cost effective, over the whole life cycle?
  - which investments should we prioritize?
  - how is liquidity developing, do we have enough funding?
- Forward looking financial modelling, forecasting:
  - projects, products, customers, tenders, efficiency measures, sites, business areas, companies, group...
- Valuations, Mergers & Acquisitions, Impairment testing



# Our value proposition

## Your challenge

- Non-standardized in-house Excel models
- Time consuming
- Risk for errors
- Bad comparability
- Little or no transparency
- People dependent
- Important long-term decisions



## Our solution Invest for Excel®

- Standardised calculations
- Saves time
- Transparent calculations
- Comparable results
- Easy and safe to use
- Best practise
- Flexibility to model any type of business
- International Accounting Standards

# Testimonials



**kraftringen**  
Most energy companies and their marketing managers could draw great benefit from I4E, especially if their task is to provide profitability calculations for their customers.



I4E ensures all information is included in the calculation.

We value highly that the calculation rules are exhaustively tested and are protected against changes



**DAIMLER**

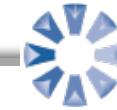


The program is easy to use, it's reliable and has a good output. – It is a good companion you can trust.”

Now, we controllers do not need to worry about correctness and form when I4E is used. It saves us a lot of time and money.



storaeenso

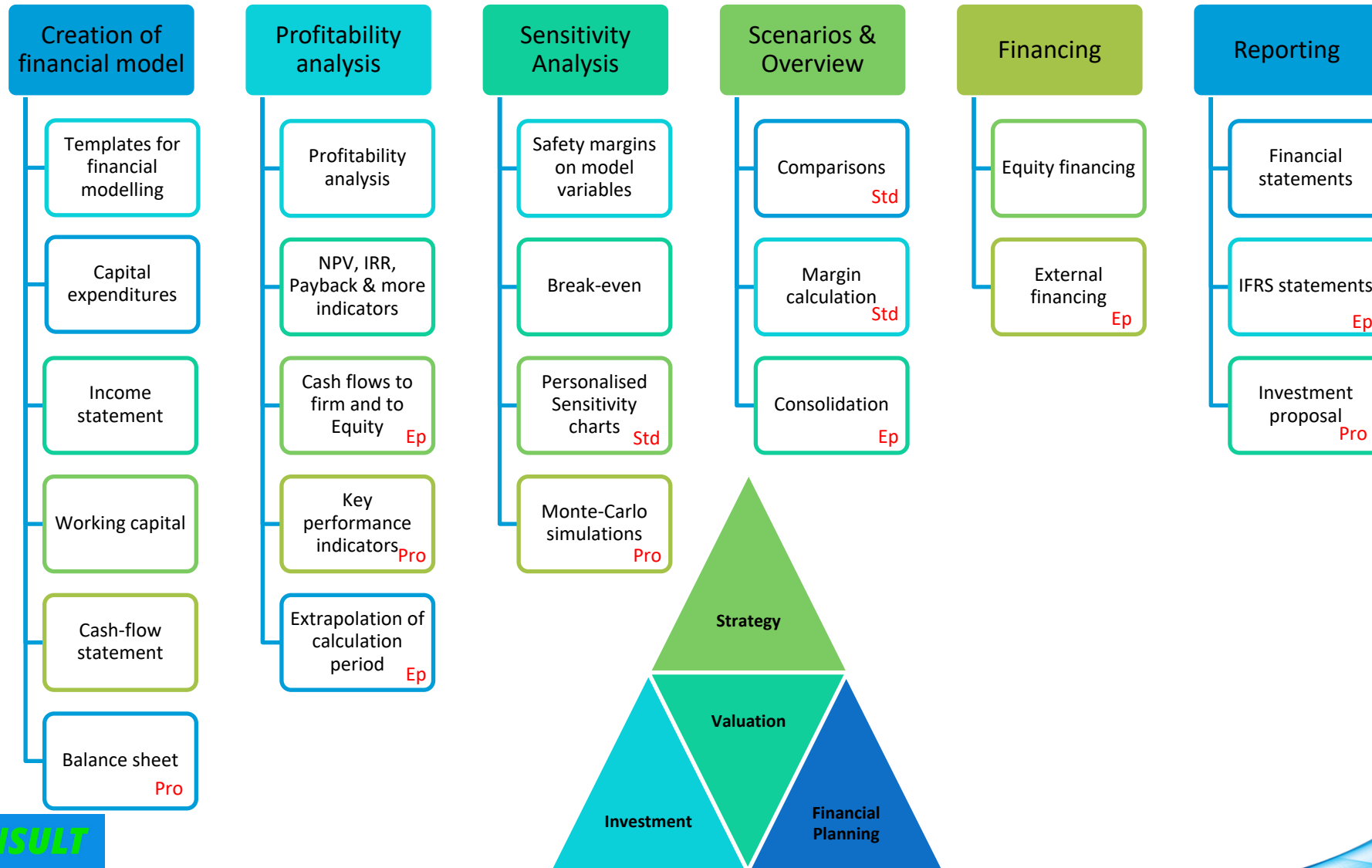


**ACCESS ANALYTIC**

We use Invest for Excel exclusively in all our financial modelling consulting assignments. It reduces the time taken to develop models by around 50-80%!

invest  
FOR EXCEL

# Financial modelling with Invest for Excel®



# Invest for Excel functionality

SOFTWARE EDITIONS

Enterprise Pro Standard Lite

	Enterprise	Pro	Standard	Lite
<b>Lite Edition</b> ↻ Calculation term, interval periods, discounting rate, taxes and more Capital expenditures with a selection of depreciation methods and options for residual value Profit calculation in a form of Profit and Loss Account Working capital calculation Cash flow statement Profitability Analysis (NPV, IRR, payback, RONA, EVA, DCVA and more) based on FCFF A great variety of sensitivity analysis in a form of charts and report tables Break-even function on any input variable	✓	✓	✓	✓
<b>Standard Edition</b> ↻ Comparison of various investments Margin calculation Function for creating customized charts and sensitivity analysis Modeling rows can be categorized into 3 levels of hierarchy specification	✓	✓	✓	
<b>Pro Edition</b> ↻ Balance sheet Investment proposal Financial ratios and DuPont analysis <b>New!</b> Language change function (English, German, Spanish, Swedish, Finnish, Polish, Russian) Customization of headings, rows, and key ratios. Locking of calculation files (partial/full) Monte Carlo Simulation	✓	✓		
<b>Enterprise Edition</b> ↻ Rolling forecast. Project financing module, liquidity planning Consolidation of many calculations into one summary , elimination of internal transactions IFRS and US GAAP impairment test Valuation for acquisitions, mergers, and sales of businesses Perpetuity (going concern), Extrapolation	✓	✓		

invest  
FOR EXCEL

# Subscription prices 2022, 12 months period

	Monthly price (CAD) by version			
Number of named users	Enterprise	Pro	Standard	Lite
1 license	250	133	96	49
5 licenses pack	1,060	583	432	227
10 licenses pack	1,708	990	771	417

Includes License, Updates, User support, Training.  
Invoiced annually. Agreement period is 12 months.

All prices exclude applicable taxes

# Software Purchase Prices 2022

## Perpetual license

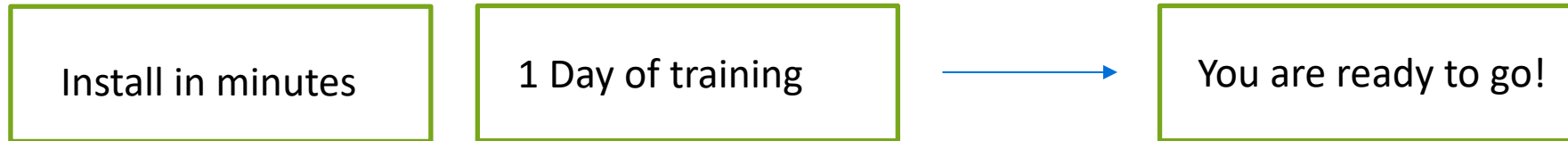
Number of named users	Price (one-time cost) in CAD by edition			
	Enterprise	Pro	Standard	Lite
1-4 licenses each	5,990	3,200	2,300	1,175
5 licenses pack	25,450	14,000	10,375	5,450
10 licenses pack	41,000	23,750	18,500	10,000

All prices exclude applicable taxes

+

Annual Maintenance Services (Updates, User support and Training) for 25% of software list price

# Invest for Excel<sup>®</sup> smooth implementation



- Fast and easy installation
- Network/ workstation
- Efficient use after just 1 day of training
- The whole implementation easy and fast - to a very competitive price
- Support of experienced experts, best practices sharing
- System requirements
  - Microsoft Excel 2010, 2013, 2016, 2019 or Microsoft 365 Desktop (Office 365 Desktop), 32 or 64 bit.
  - Microsoft Windows 7, 8.1, Windows 10 or Windows 11, 32 or 64 bit.

# Effective Capital Budgeting Process with Invest for Excel®

COMMON CULTURE

## PERFORMANCE



Effective Profitability  
Analysis

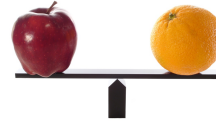


Sensitivity Analysis  
and Risk Simulations



Agility and Control

## MUST-HAVES



Consistency and  
Comparability



Auditability and  
Documentability

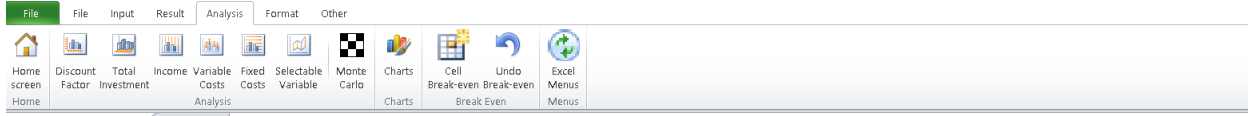


Compliance

COMMON PLATFORM

invest  
FOR EXCEL





**DataPartner** **invest FOR EXCEL** ENTERPRISE Program version 3.8

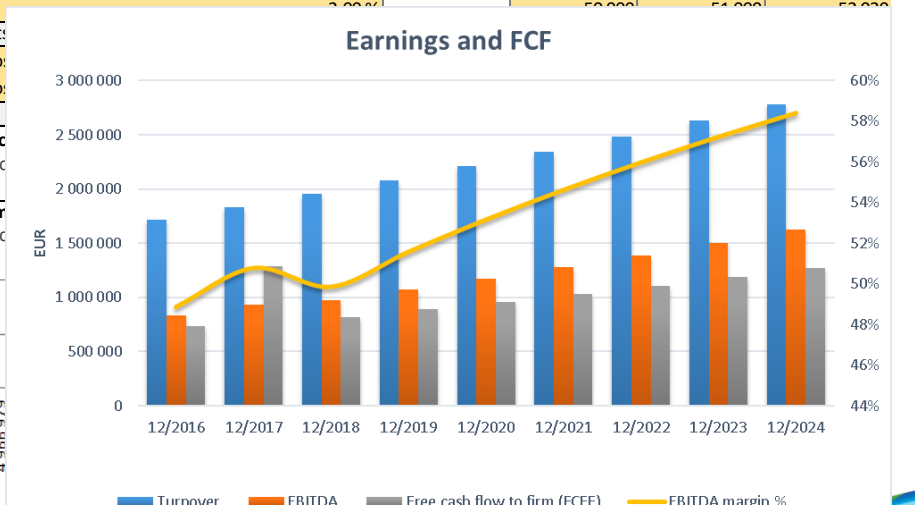
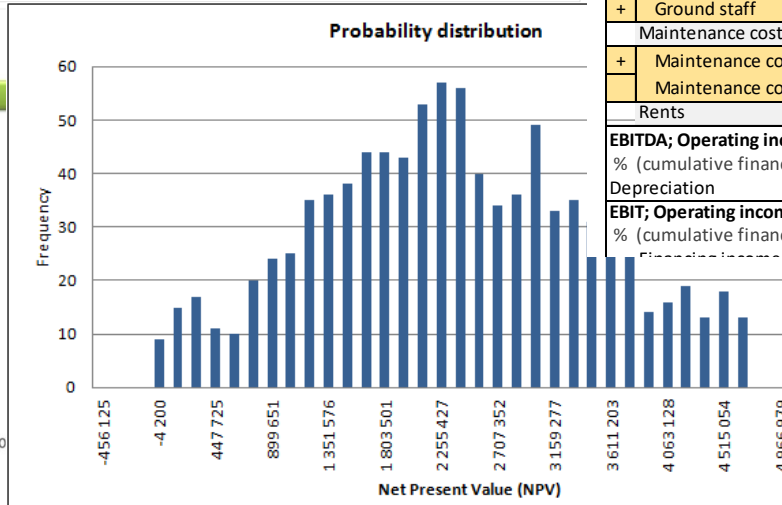
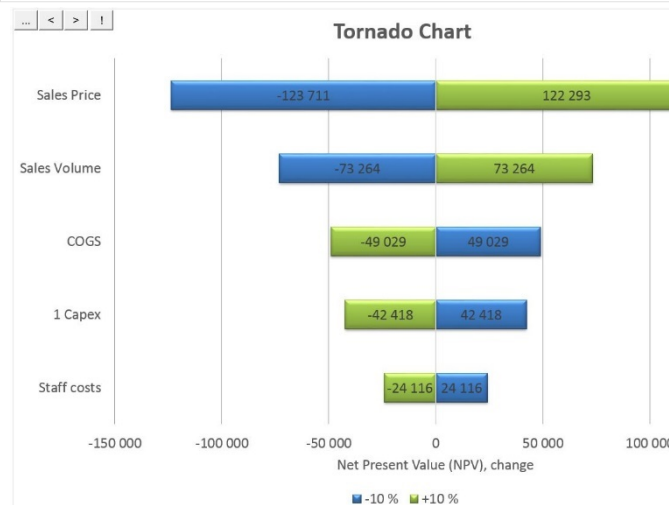
Input values	Calculations	Result	Analysis
<input type="checkbox"/> Basic values	<input type="checkbox"/> Investment	<input type="checkbox"/> Profitability analysis	<input type="checkbox"/> Discount factor
<input type="checkbox"/> Contact information	<input type="checkbox"/> Income statement	<input type="checkbox"/> Comparison table	<input type="checkbox"/> Total investment
<input type="checkbox"/> Folders and files	<input type="checkbox"/> Working capital	<input type="checkbox"/> Marginal effect	<input type="checkbox"/> Income
<input type="checkbox"/> Program guide	<input type="checkbox"/> Cash flow	<input type="checkbox"/> Consolidation	<input type="checkbox"/> Variable costs
<a href="#">User manual (pdf)</a>	<input type="checkbox"/> Balance	<input type="checkbox"/> Impairment test verification	<input type="checkbox"/> Fixed costs
	<input type="checkbox"/> Key financials	<input type="checkbox"/> Investment proposal	<input type="checkbox"/> Income variable
	<input type="checkbox"/> Financing		<input type="checkbox"/> Charts

Calculation file: < Not open > Comparison file: < Not open >  
 Proposal file: < Not open > Financing file: < Not open >

[www.investforexcel.com](http://www.investforexcel.com)

### INCOME STATEMENT

EUR	1/2017	12/2017	12/2018	12/2019
Months per interval		12	12	12
Passenger traffic		1 400 000	1 513 680	1 631 347
+ Number of passengers		5 000	5 300	5 600
+ Number of passengers Increase		5 000	300	300
Capacity			8 320	8 320
Cabin factor %			64 %	67 %
* Average ticket price	2,00 %	280	286	291
Mail service revenue		200 000	200 000	200 000
<b>Net sales</b>	<b>0</b>	<b>1 600 000</b>	<b>1 713 680</b>	<b>1 831 347</b>
Variable costs	0	-269 760	-282 499	-295 640
Fuel costs		-194 760	-201 409	-208 246
+ Fuel costs empty plane		-149 760	-152 755	-155 810
+ Fuel cost per flight	2,00 %	-720	-734	-749
* Number of flights		208	208	208
+ Fuel costs from passenger weight		-45 000	-48 654	-52 436
+ Fuel cost per passenger	2,00 %	-9	-9	-9
* Number of passengers		5 000	5 300	5 600
Handling costs		-75 000	-81 090	-87 394
+ Handling cost per passenger	2,00 %	-15	-15	-16
* Number of passengers		5 000	5 300	5 600
<b>Gross margin</b>	<b>0</b>	<b>1 330 240</b>	<b>1 431 181</b>	<b>1 535 707</b>
% (cumulative financial year)		83,1%	83,5%	83,9%
Fixed costs	0	-582 500	-594 150	-606 033
Staff costs		-250 000	-255 000	-260 100
+ Air crew	2,00 %	-200 000	-204 000	-208 080
+ Ground staff	2,00 %	-50 000	-51 000	-52 020
Maintenance costs				
+ Maintenance costs				
+ Maintenance costs				
Rents				
<b>EBITDA; Operating income</b>				
% (cumulative financial year)				
Depreciation				
<b>EBIT; Operating income</b>				
% (cumulative financial year)				



# Book a free software presentation, on-line or on-site.



Jens Westerbladh, CEO  
+358 400 306 822  
jw@datapartner.fi



For more  
information visit:  
[www.investforexcel.com](http://www.investforexcel.com)

**Datapartner Oy**  
Raatihuoneenkatu 8 A  
06100 Porvoo  
Finland  
Tel. +358 19 54 10 100  
datapartner@datapartner.fi

In CANADA:  
[www.investforexcel.ca](http://www.investforexcel.ca)

**LEAPFROG CONSULT**  
Ottawa, Ontario, Canada  
info@investforexcel.ca

invest  
FOR EXCEL