

# 38 NORTHWEST 24 STREET

WYNWOOD, FL

# 38 NW 24 STREET

5,800 SF

\$45 psf

DOUBLE HEIGHT CEILINGS

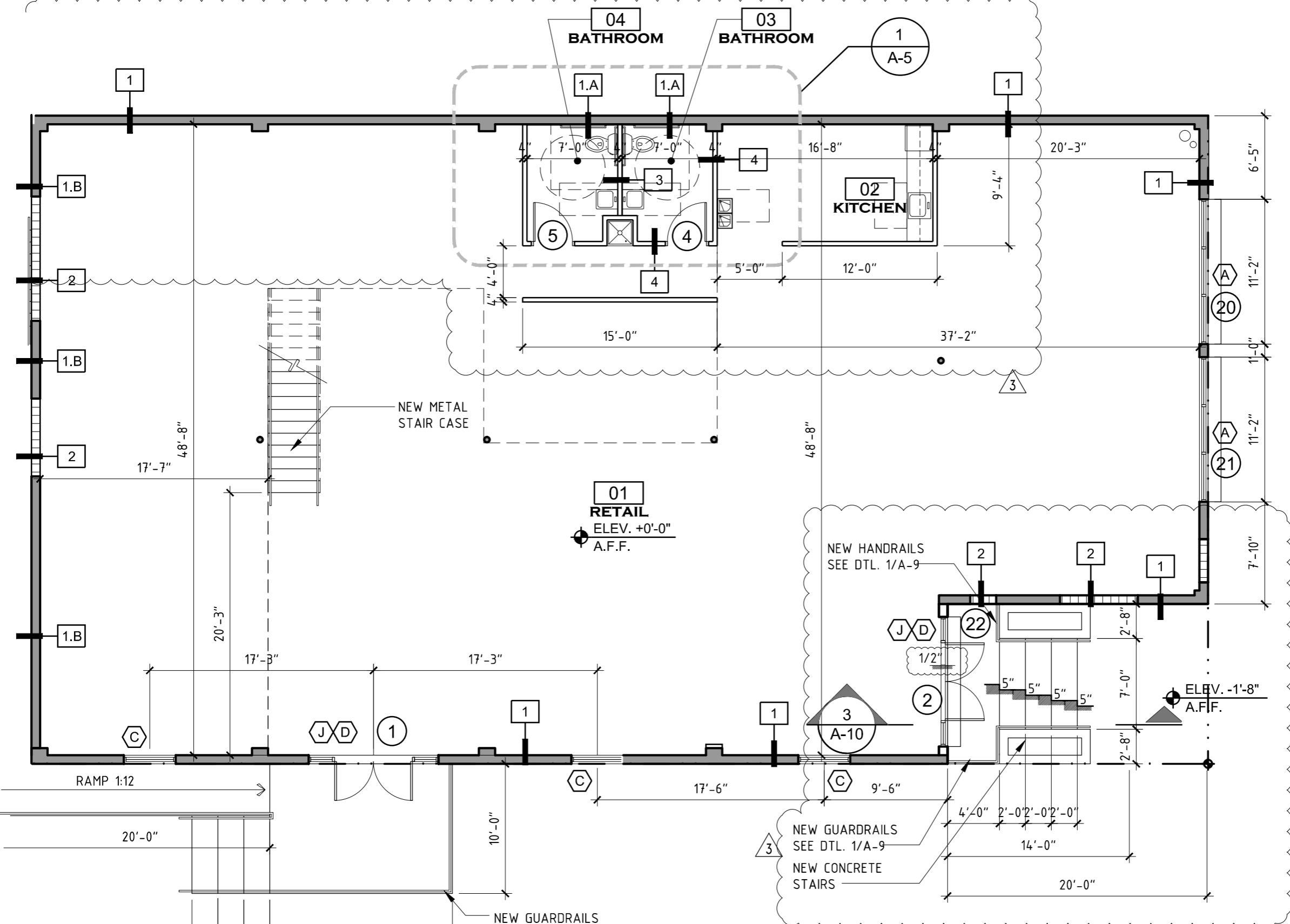
MEZZANINE LEVEL

PRIVATE OFFICES

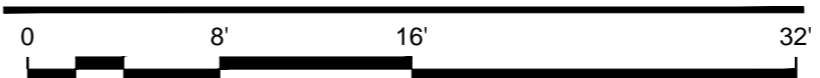
CONFERENCE ROOM

GATED PARKING

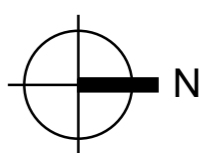




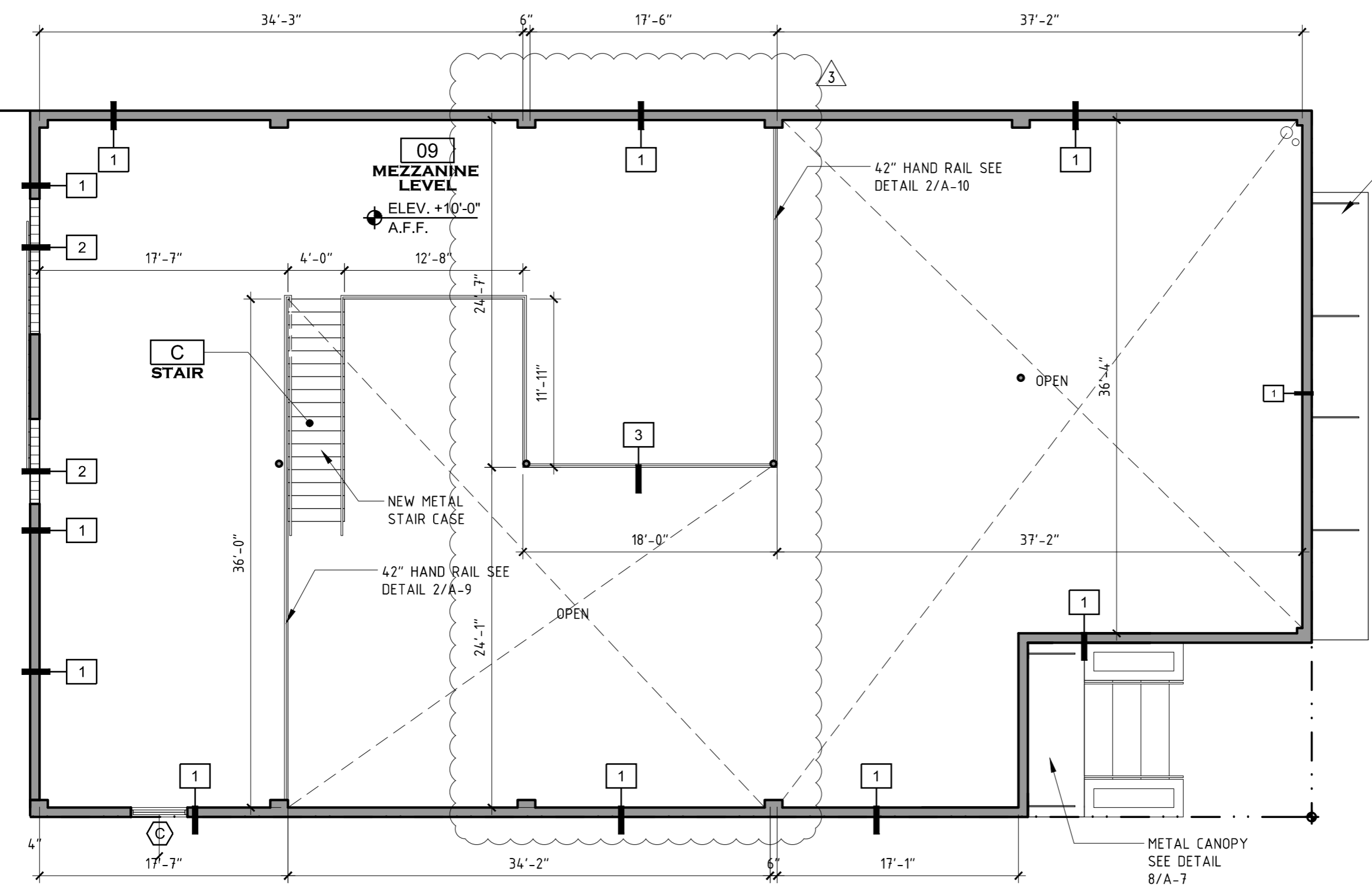
### GROUND FLOOR PLAN



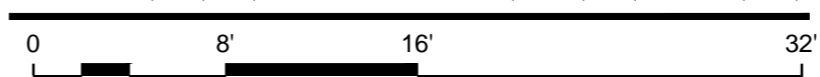
SCALE: 1/8" = 1'-0"



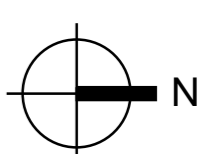
N.W. 24th STREET



### MEZZANINE LEVEL PLAN



SCALE: 1/8" = 1'-0"





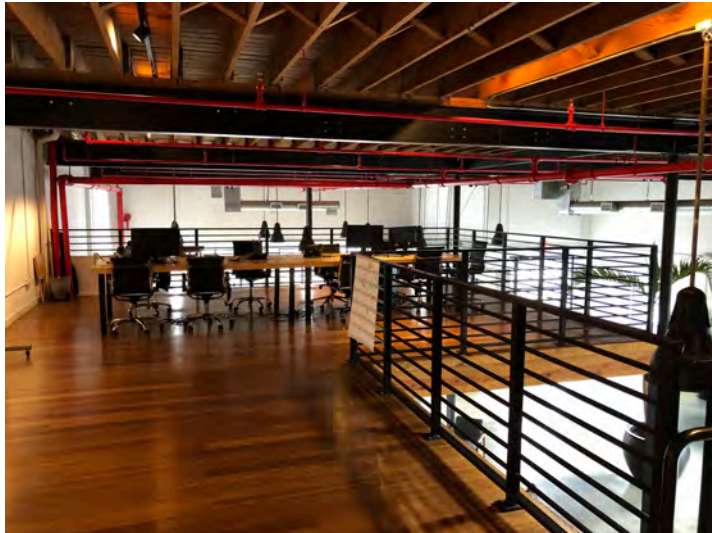
EXTERIOR VIEW



GATED PARKING



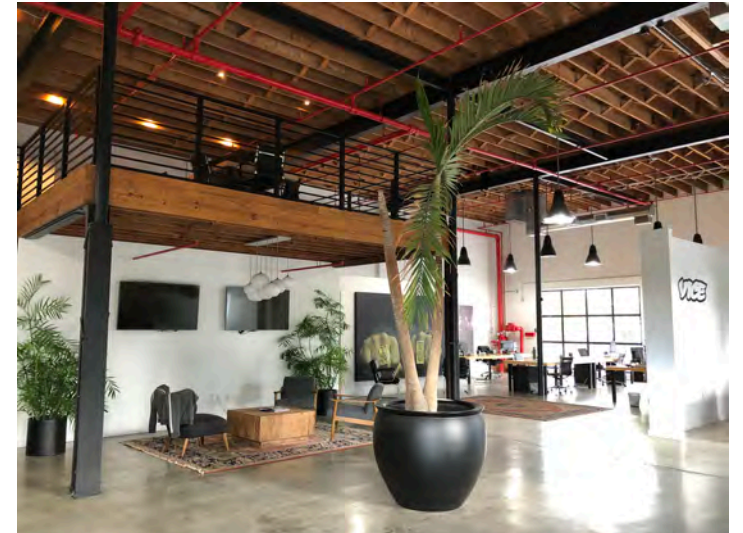
INTERIOR VIEW



MEZZANINE LEVEL



EXTERIOR VIEW



INTERIOR VIEW

LET'S GET YOU OFF THE GROUND

At Big Move Properties, we specialize in one-of-a-kind, fun, creative commercial spaces.



For leasing information, contact:

Melissa Andrade | 786-615-3770

# OUR OTHER PROJECTS

