

# Everyday Shoes

With **STRETCH**

## Firecrest

Blue Suede/  
Stretch\*\*



Navy/  
Stretch\*\*



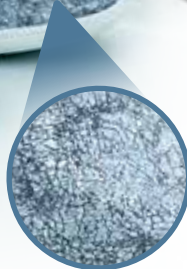
Black/  
Stretch\*\*



Light Grey



**STRETCH**



**Opens wide**  
for easy foot entry.

**Round toe shape** and deep toe box gives plenty of room for your toes.



### Firecrest

EE - 4E **2V** Sizes 3 - 9  
6E - 8E **6V** Sizes 3 - 9



## Cockatoo

New Style



White



1 1/4"  
3/4"

2" wedge heel with a 1 1/4" heel drop

A stable sole with a little extra height.

**Almond toe shape** for comfort. Slightly pointed at the end for a stylish look.



### Cockatoo

EE - 4E **2V** Sizes 3 - 9  
6E - 8E **6V** Sizes 3 - 9



Opens up for easy access

# Everyday Shoes

Rory



New Colour Rory Sky Blue



Soft Gold/Stretch\*\*

STRETCH



Owl

All styles have stiffeners built into the heel for increased support.

Seam free toebox to prevent rubbing.



Beige New Colour



Opens up For easy foot entry.

Navy



Black



New Colour Rory Sky Blue

Navy/Stretch\*\*



Sky Blue/Stretch\*\*



Black/Stretch\*\*



Stretch panels are perfect for feet that swell and can accommodate bunions too!

Round toe shape and deep toe box gives plenty of room for your toes.



## Rory & Owl

EE - 4E 2V Sizes 3 - 9  
6E - 8E 6V Sizes 3 - 9





With Added STRETCH

# House Shoes

## The Comfort of a Slipper with the Support of a Shoe

Our house shoes have **hard-wearing outsoles** which means you can wear them out and about too.

### Eliza



Navy Stretch



Black Stretch



Eliza Navy Stretch

**Back Stiffener** built in to heel gives increased support.

**Round toe shape** and deep toe box gives plenty of room for your toes.



### Eliza, Azalea & Eve

EE - 4E **2V** Sizes 3 - 8

6E - 8E **6V** Sizes 3 - 8



**Back Stiffener** built in to heel gives increased support.

### Azalea

Black Stretch

**Elasticated Topline** for improved fit.



Azalea Navy Stretch

### Eve



**Elasticated Topline** for improved fit.

Navy Stretch



Black Stretch



**Back Stiffener** built in to heel gives increased support.



Eve Navy Stretch