



Canada GL Lighting Technology Inc.

7351 Victoria Park Ave, Unit 3, Markham, ON, Canada, L3R 3A5
T: 905-604-1000 | F: 1-866-756-3987 | info@gl-light.com | www.gl-light.ca

GL 40W/60W/90W LED Wall Pack Lighting(Adjustable CCT)

GL-WP-90WH-MC

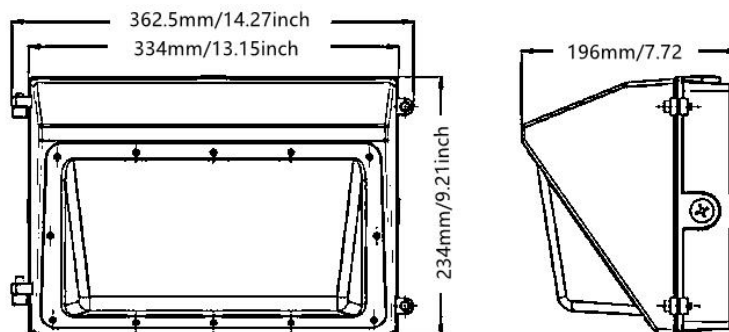


Photoelectric Switch

Features

- ETL certified to U.S.and Canadian standards. DLC qualified product.
- Sealed die-casted profile for indoor and outdoor applications.
- Suitable for Canadian full voltage design LED driver: 120-347Vac.
- Adjustable multi color temperature:3000K,3500K,4000K,5000K and 5700K.
- Comes in a standard dark bronze finish to match any area. IP65 Suitable for wet locations.
- 40W,60W,90W, DIP dial adjustable.120lm/W,0-10V dimming.
- Dusk to Dawn Sensor Photoelectric Switch - sold separately

Dimension

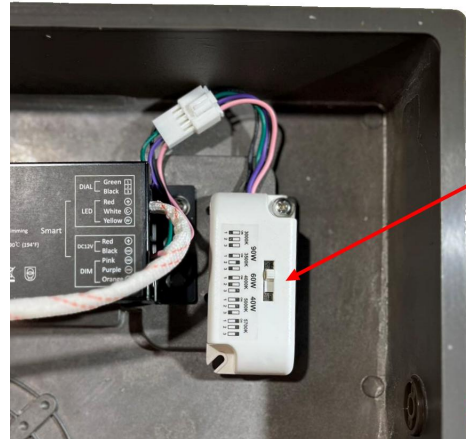




Canada GL Lighting Technology Inc.

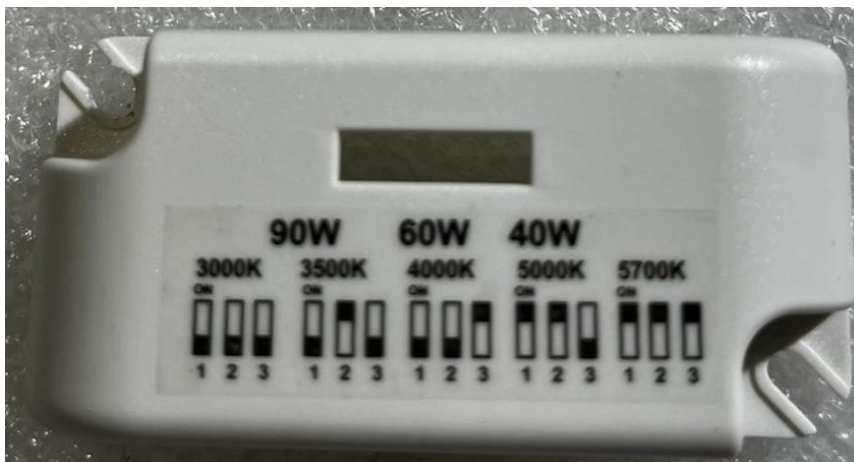
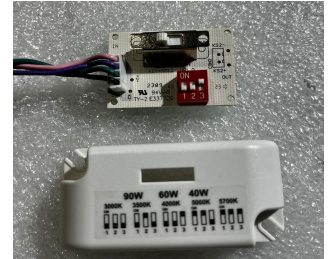
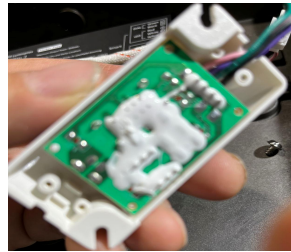
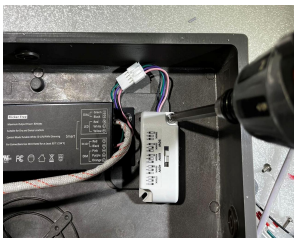
7351 Victoria Park Ave, Unit 3, Markham, ON, Canada, L3R 3A5
T: 905-604-1000 | F: 1-866-756-3987 | info@gl-light.com | www.gl-light.ca

40W,60W,90W, DIP dial adjustable



DIP
90W
60W
40W

Adjustable CCT





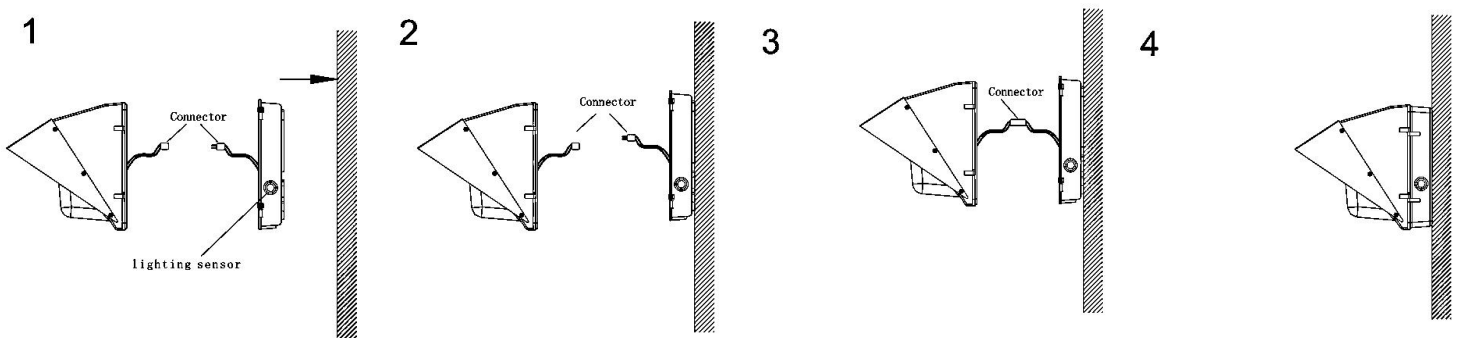
Canada GL Lighting Technology Inc.

7351 Victoria Park Ave, Unit 3, Markham, ON, Canada, L3R 3A5
T: 905-604-1000 | F: 1-866-756-3987 | info@gl-light.com | www.gl-light.ca

GL Wall Pack Fixture Installation Guide

Warning:

1. Ensure power is off before starting installation, wiring or servicing
2. Installation should only be performed by qualified electrician.
3. The mounted surface should have enough strength to endure the weight of fixture.
4. This fixture is for outdoor use and should not be operated in areas with Limited ventilation or high ambient temperature.
5. Adjust the wattage and color temperature you want.
6. Double check your power source to make sure the supply voltage is compatible with the unit. 120Vac-347Vac or 480Vac.



Order Code:

GL-WP-90WH-MC

Blank (no Photoelectric Switch)

PS (with Photoelectric Switch)