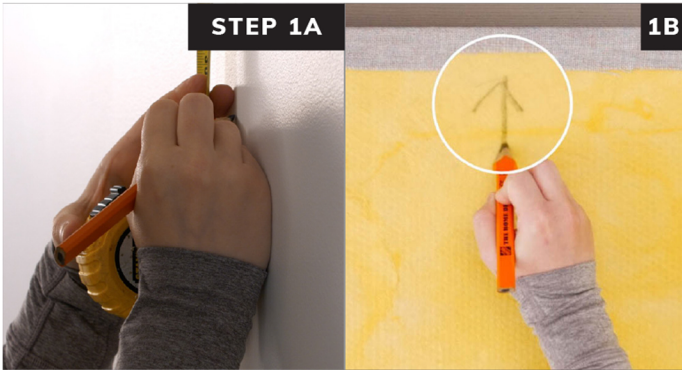


Rotofast Snap-On Anchors are a secure and fast solution for acoustical panel installation.
See rotofast.com for the Rotofast Snap-On Anchor installation video.



Measure and mark the location where panel will be placed and mark the orientation on the back of the panel.



Screw Rotofast Snap-On Anchors into back of the panel using the Rotofast driver tool. Do not over-tighten.



Insert reusable marking plugs into the Snap-On anchors.



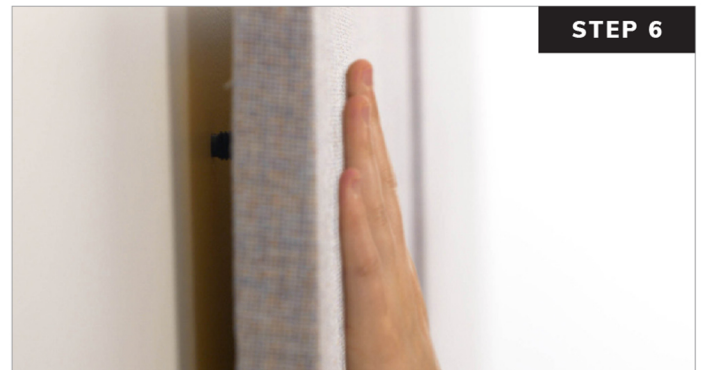
Push panel against wall to mark anchor locations.



Screw ratchets to wall at marked locations. Flat end of ratchet goes against the wall, curved end faces out.

#8 screws recommended
*Hollow wall anchors are recommended for drywall applications.

Anchors Have a 45 Pound Pull-Out Strength Per Anchor.



Firmly strike panel onto ratchets to complete the installation.
6 Anchors Per Panel for Panels Over 60" in Width or Height.
4 Anchors Per Panel for Panels Under 60" in Width & Height.