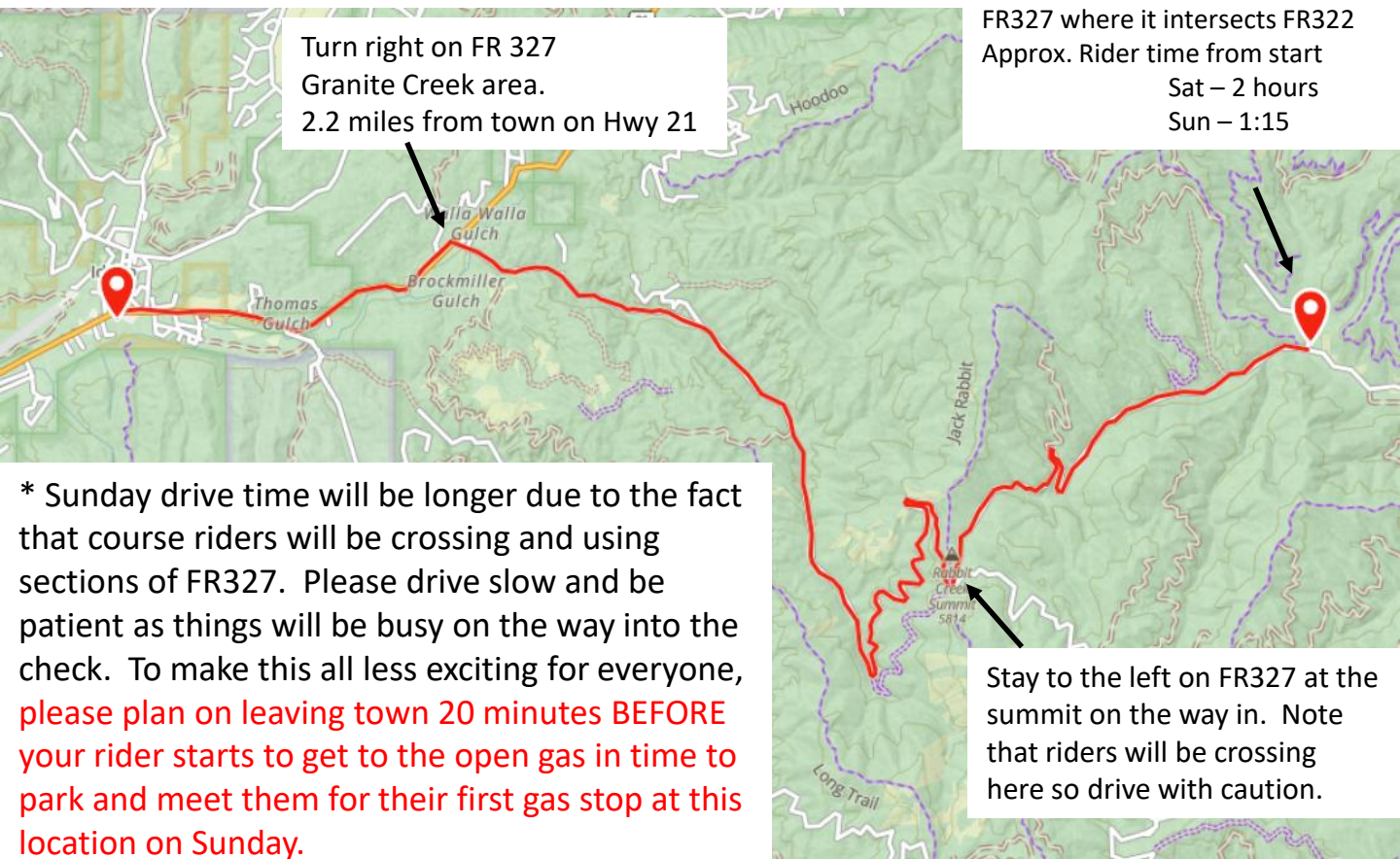


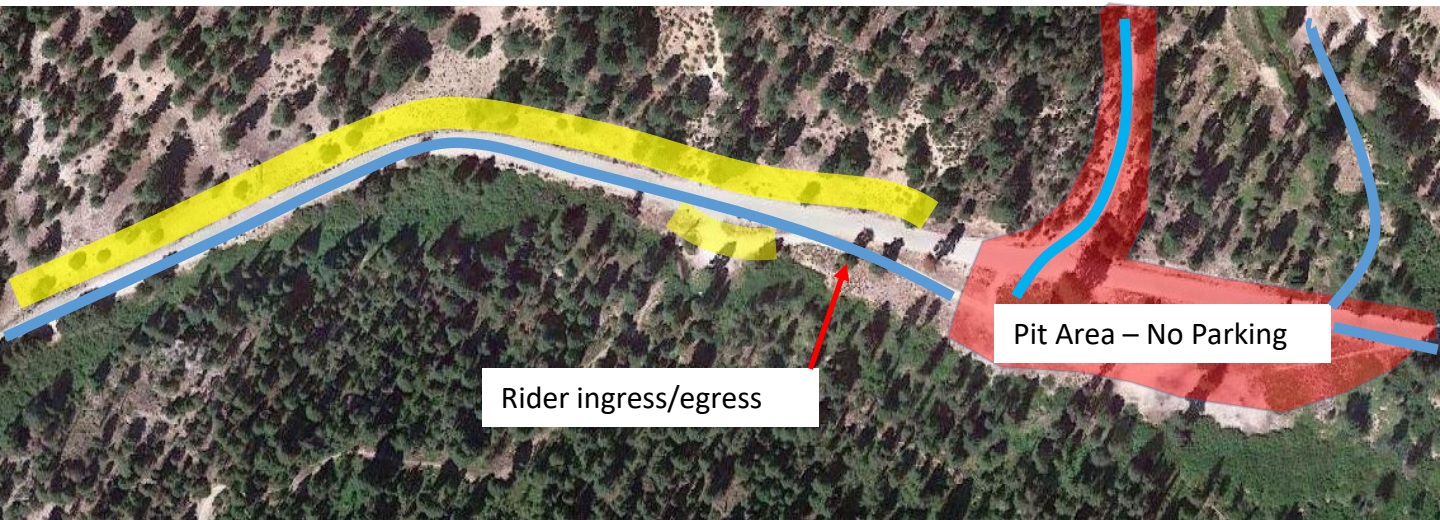
2023 Idaho City 100 Open Gas Stop Location

12.1 miles and approx. 45+* minute drive time from start/finish area in town



* Sunday drive time will be longer due to the fact that course riders will be crossing and using sections of FR327. Please drive slow and be patient as things will be busy on the way into the check. To make this all less exciting for everyone, **please plan on leaving town 20 minutes BEFORE your rider starts to get to the open gas in time to park and meet them for their first gas stop at this location on Sunday.**

Crew parking in the yellow highlighted areas only on the North side of FR327. Do NOT park on the South side of FR327 or beyond the pit area. Pop-ups/lawn chairs are welcome in the pit area outside of the rider paths and fueling area.



Absolutely no fueling outside of designated gas stop fuel containment area

Grass Track Bus Service

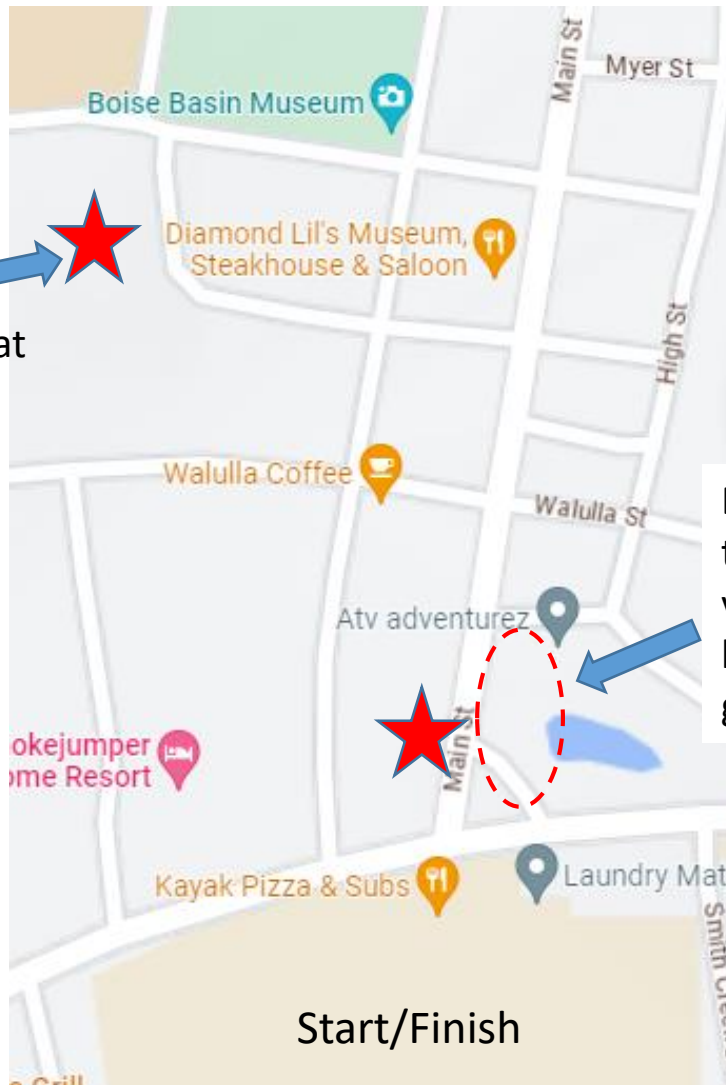
Bus stops at 2 locations in town:

Community Center (registration)

Across from Visitor's Center on Main St.

First Bus leaves the community center at: 12:45 Saturday, 8:00 Sunday

Approximately 50 minute round trip.



Grass Track
spectator parking at
community center

DO NOT park in
the business and
visitor center lots
here to ride the
grass track bus.

Start/Finish

*** Personal vehicles are not allowed to access the grass track on event days for safety reasons. The rider course uses portions of the access road. ***

Riders who want to walk the grass track on Friday afternoon, location information will be available at the community center.