

TORTORIS[®]

A NEW BRAND IS BORN

BORRN

TO

QUIT

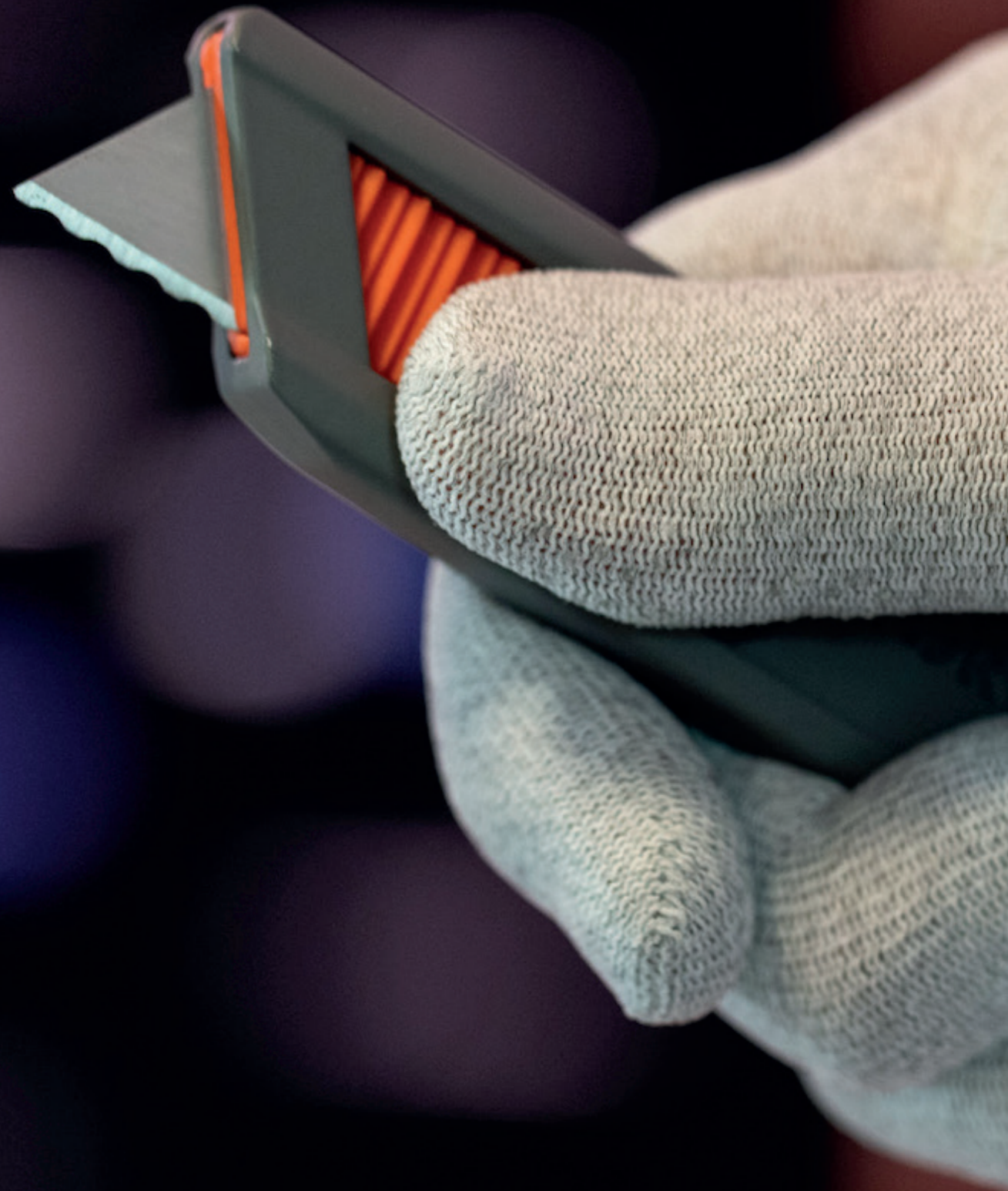
TORTORIS[®]

**SAFETY
KNIVES**

TORTORIS[®]

A FULL RANGE OF CUTTING SOLUTIONS

Whether your workers need to cut through double wall corrugate with ease, open boxes with care or quickly replace the blade, Tortoris offers a cutting solution that works for everyone on the team. Discover our safety knives to improve the day-to-day demands of your operation.



TORTORIS[®]

PERFECT FOR ALL YOUR CUTTING APPLICATIONS

First of all, Tortoris' safety knives are manufactured in Europe, so quality is guaranteed. This unique range of safety cutters is especially designed to reduce injuries in the workplace and to prevent high medical costs for employers. Tortoris was created by three men with many years of experience in the cutting industry, so they know the benefits of a well invented safety knife better than anyone else. Check them out!



TORTORIS®

UNIQUE SAFETY TECHNOLOGY

S

Automatic blade
retraction
High safety

ES

Fully automatic
blade retraction
Extra high safety

US

Concealed blade
**Ultra/Maximum
safety**

- FOR SAFE CUTTING OF FILM AND PAPER ROLLS
- THICKER MATERIALS • CARDBOARD
- SLABBING • BAGGED GOODS

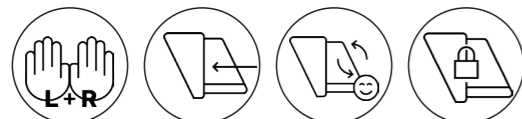
TORTORIS®

GOODS PROTECTION • REDUCES INJURIES





ES 44 EXTRA SAFE 44 FULLY AUTOMATIC BLADE RETRACTION



ALSO COMING SOON
METAL DETECTABLE

FEATURE



Tool-free blade change



Safety lock



Fully auto-retractable

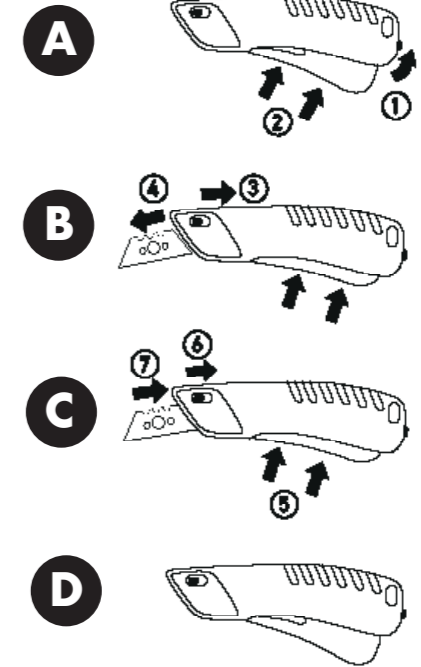


Long blade length



Ergonomic design

BLADE CHANGE



PACKAGE

Package unit	1 in box
Qty in inner box	10 pcs
EAN Code single unit box	9505295698822

REPLACEMENT BLADE

Made in Europe



NO. B1-N5 TIN
0,63 mm, TIN-coated

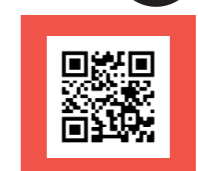


NO. B1-N5 R TIN
0,63 mm, TIN-coated
rounded blade tips

SPECIFICATIONS

Order No	ES44
Customs tariff number	82119300
Knife size (L*W*H)	146 x 55 x 18 mm
Weight knife	60 g
Handle materials	NGF + POM + carbon steel
Blade material	carbon steel
Blade size	51 x 18 x 0,6 mm
Cutting depth	18 mm

VIDEO **ES 44**

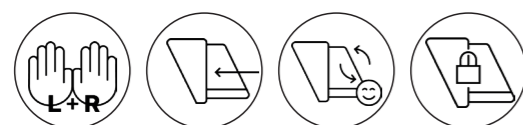


Enjoy Safety
Use **TORTORIS®**



**S
24**

SAFE 24 AUTOMATIC BLADE RETRACTION



FEATURE



Tool-free blade change



Safety lock



Auto-retractable

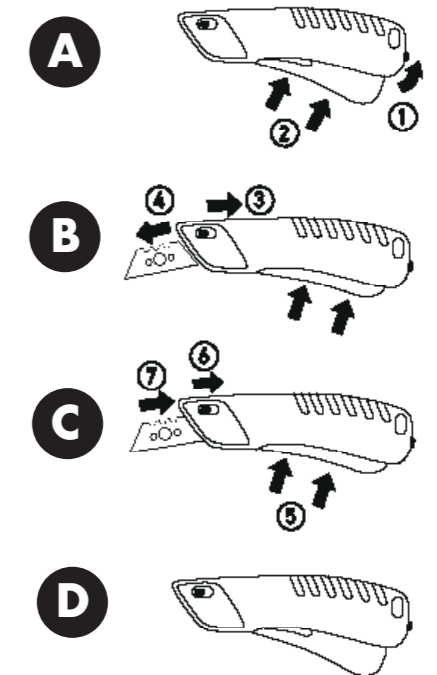


Long blade length



Ergonomic design

BLADE CHANGE



PACKAGE

Package unit	1 in box
Qty in inner box	10 pcs
EAN Code single unit box	9505376771499

REPLACEMENT BLADE

Made in Europe



NO. B1-N5 TIN
0,63 mm, TIN-coated



NO. B1-N5 R TIN
0,63 mm, TIN-coated
rounded blade tips

SPECIFICATIONS

Order No	S24
Customs tariff number	82119300
Knife size (L*W*H)	146 x 55 x 18 mm
Weight knife	60 g
Handle materials	NGF + POM + carbon steel
Blade material	carbon steel
Blade size	51 x 18 x 0,6 mm
Cutting depth	18 mm

VIDEO **S
24**

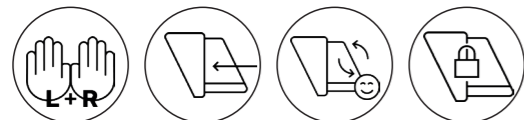


Enjoy Safety
Use **TORTORIS®**



**S
21**

SAFE 21 ADJUSTABLE AUTO-RETRACTABLE KNIFE



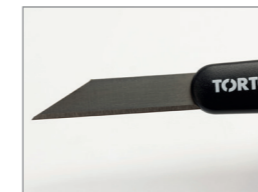
FEATURE



Self-retractable



Adjustable blade exposure



Precision cutter



Durable and lightweight



Tool-free blade change

SPECIFICATIONS

Order No	S21
Customs tariff number	82119300
Knife size (L*W*H)	165 x 17 x 11 mm
Weight knife	17 g
Handle materials	ABS + carbon steel
Blade material	Carbon steel
Blade size	
Cutting depth	0-14 mm

PACKAGE

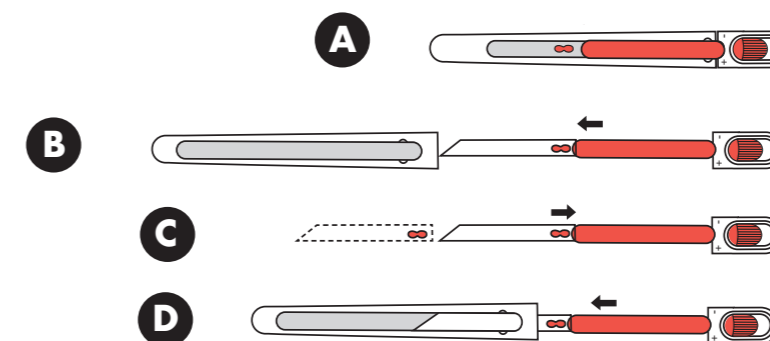
Package unit	1 in plastic bag
Qty in inner box	10 pcs in a box
EAN Code box	9505443655646

REPLACEMENT BLADE



SB009P
0,63 mm, TIN-coated

BLADE CHANGE



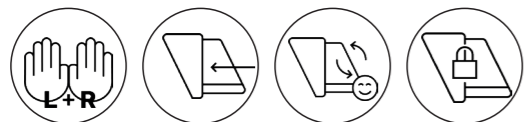
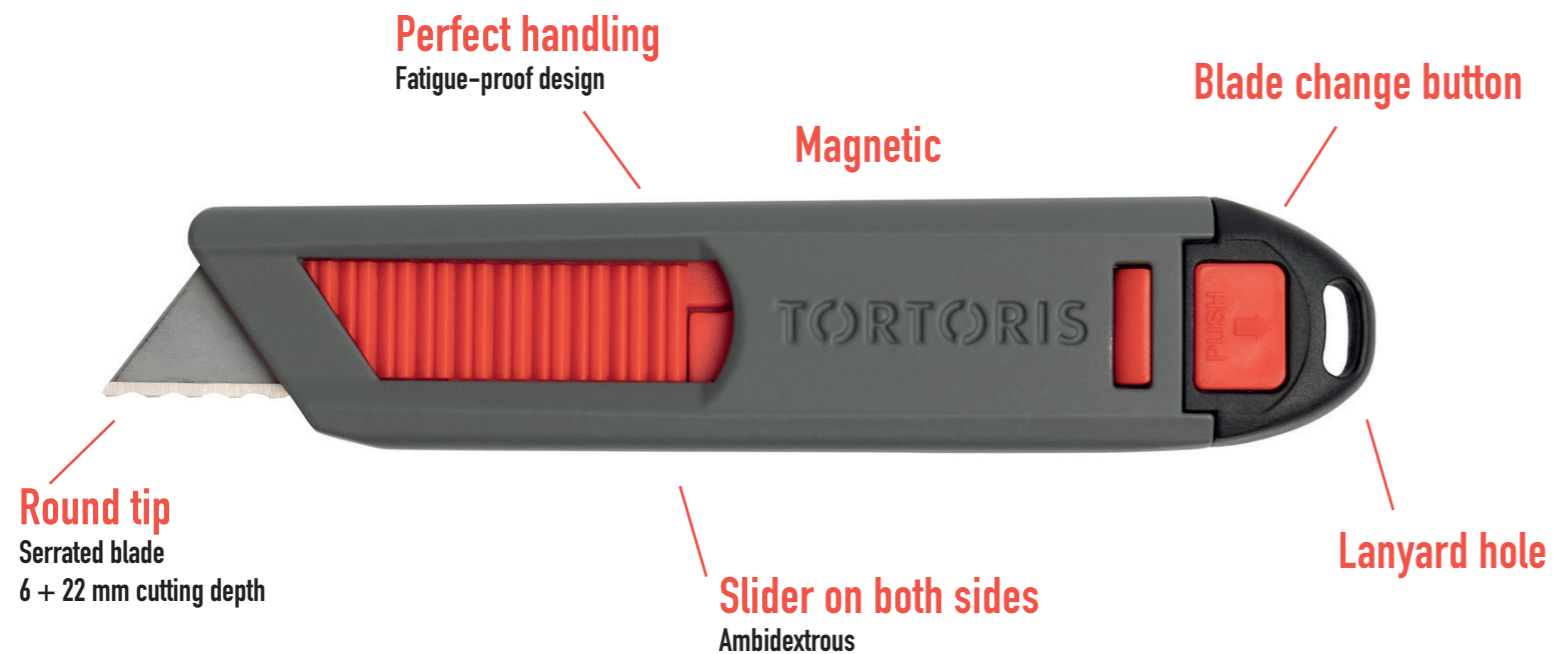
VIDEO **S
21**



Enjoy Safety
Use **TORTORIS®**



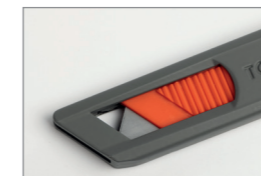
S10 **SAFE 10** AUTOMATIC BLADE RETRACTION



FEATURE



Safety lock



Ambidextrous

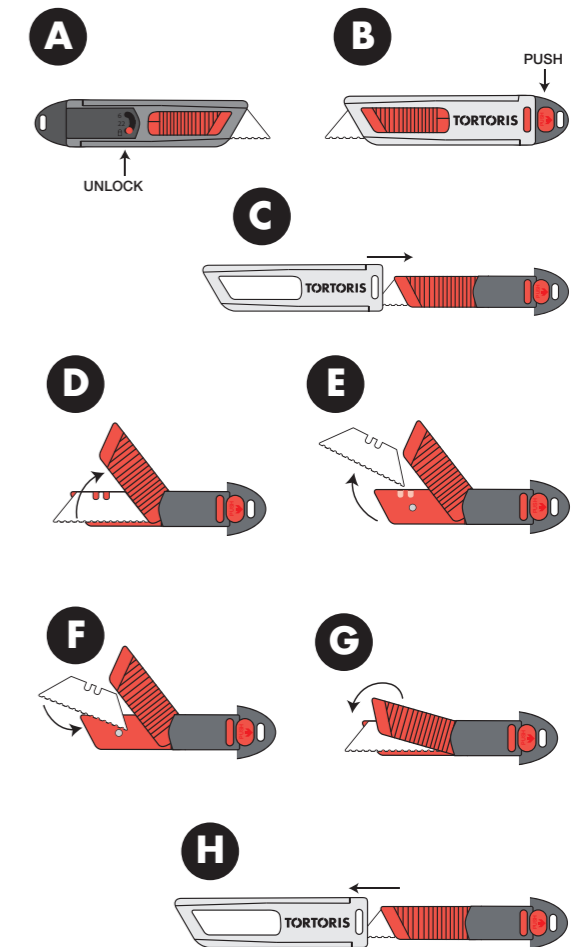


Tool-free blade change



Blade length

BLADE CHANGE



SPECIFICATIONS

Order No	S10
Customs tariff number	82119300
Knife size (L*W*H)	140 x 30 x 15 mm
Weight knife	0,06 kg
Handle materials	Aluminum alloy material NGF (Nylon + Glas Fiber)
Blade material	carbon steel
Blade size	51 x 18 x 0,6 mm
Cutting depth	22 mm

REPLACEMENT BLADE



B1-S
0,63 mm

PACKAGE

Package unit	1 in box
Qty in inner box	10 pcs
EAN Code single unit box	9507185197613

VIDEO **S10**



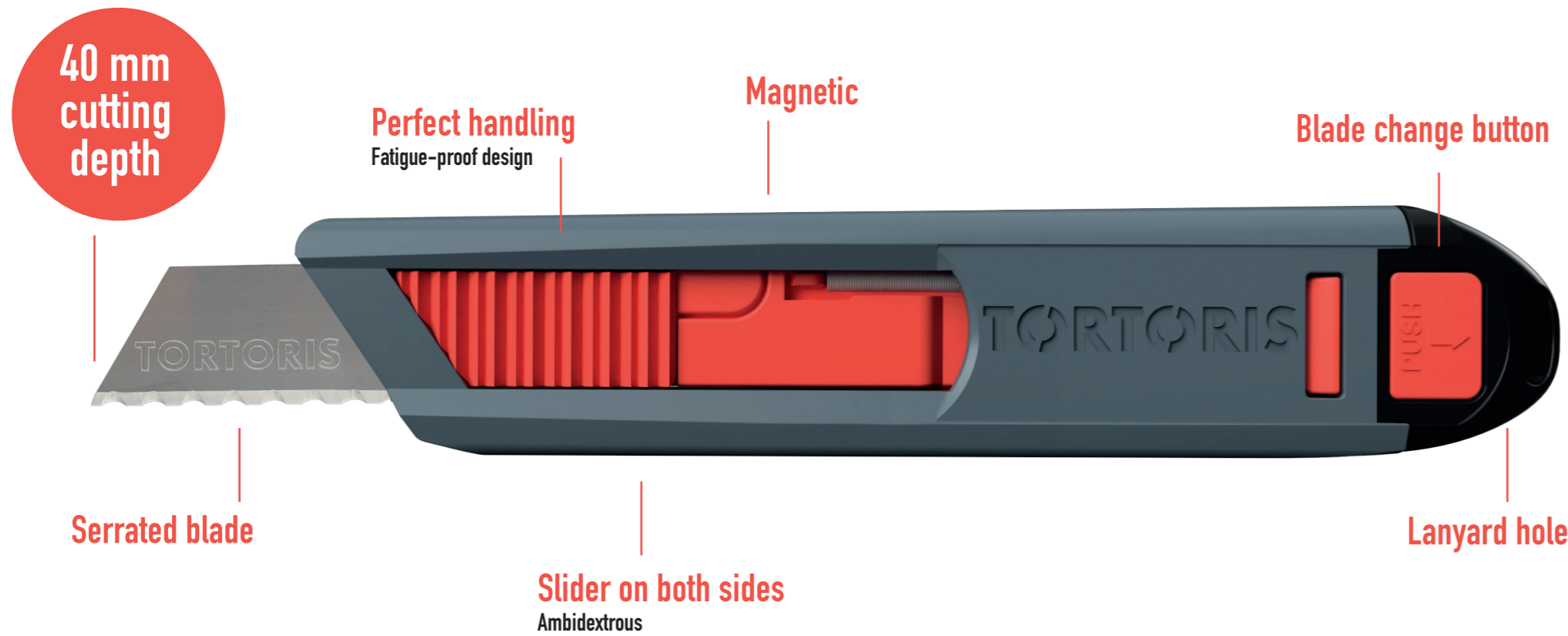
Enjoy Safety
Use **TORTORIS®**

COMING SOON

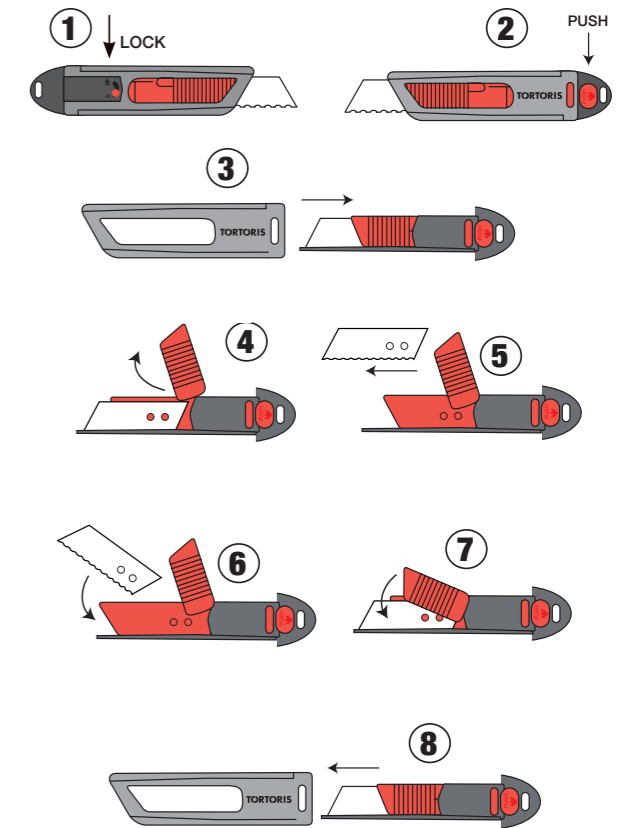
**S
11**

SAFE 11

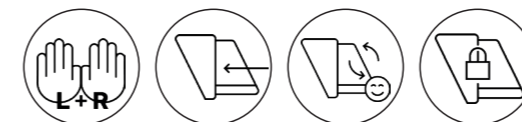
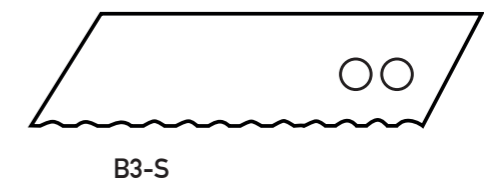
THICKER MATERIALS • CARDBOARD UP TO 3-PLY • SLABBING • BAGGED GOODS • FOAM



BLADE CHANGE



REPLACEMENT BLADE



VIDEO **S
11**



Enjoy Safety
Use **TORTORIS®**

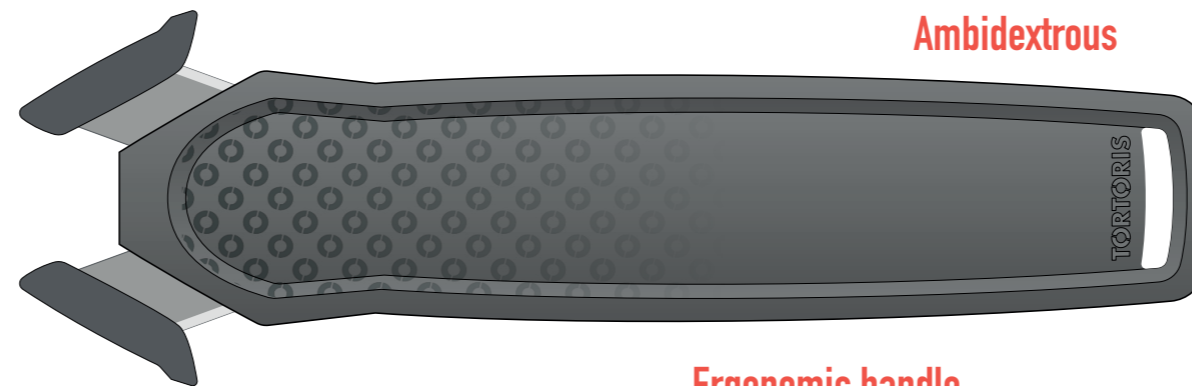
COMING SOON

**MADE
IN
EUROPE**

**ULTRA
SAFE**

**US
53**

ULTRA SAFE 53
DISPOSABLE CUTTER



Ambidextrous

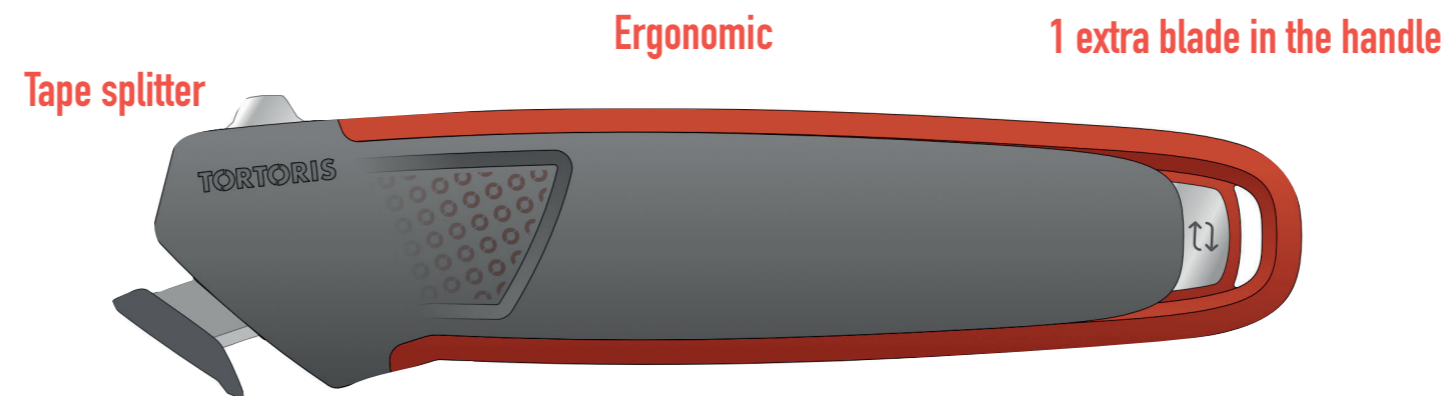
Ergonomic handle

Incl. two cutting edges
with tape splitter

CONCEALED BLADE

**US
50**

ULTRA SAFE 50
WITH REPLACEMENT BLADE



Ergonomic

1 extra blade in the handle

Tape splitter

Ambidextrous

- MAXIMUM WORK SAFETY AND MAXIMUM PROTECTION OF GOODS • IN MANY COLOURS • ULTRA SAFE AND CONVENIENT
- THE PERFECT CUTTER THAT CAN BE PRINTED WITH YOUR COMPANY LOGO OR SLOGAN



TORTORIS[®]