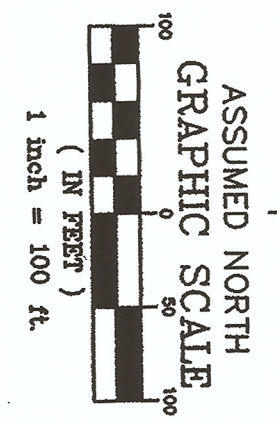


THIS INSTRUMENT WAS PREPARED BY EDWARD D. GAIACOLETTI REGISTERED LAND SURVEYOR IN INDIANA #50960 THE SCHNEIDER CORPORATION 1801 OTS AVENUE INDIANAPOLIS, INDIANA 46216-1037 TELEPHONE (317) 826-7100

CRYSTAL BAY SECTION ONE

PART S.W. & N.W. 1/4 SEC. 28-T36N-R14E

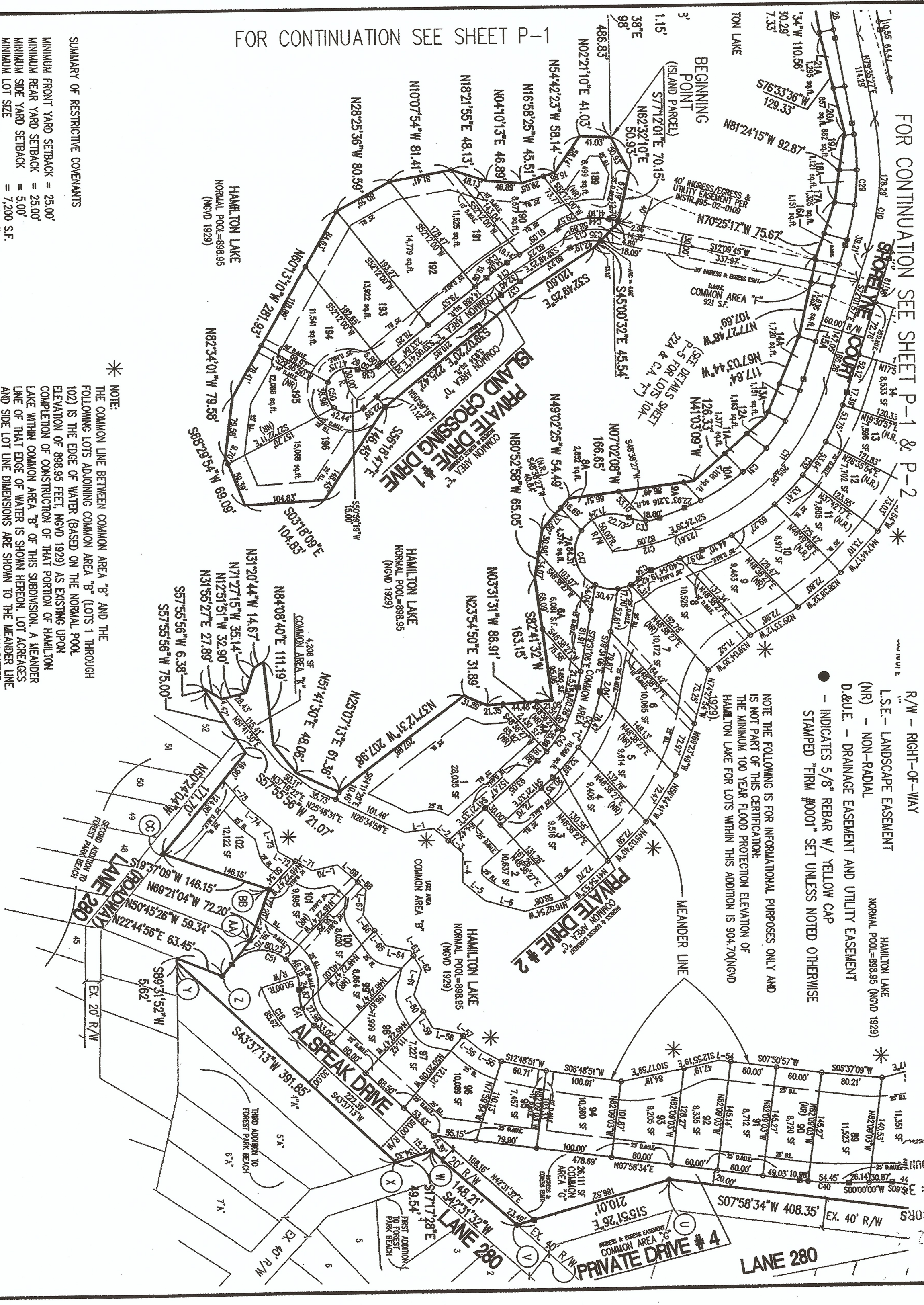
STUBEN COUNTY, INDIANA



LEGEND

- ⊠ - INDICATES MINIMUM 4 INCH DIAMETER CONCRETE MONUMENT WITH CENTER MARKED ON TOP. MONUMENT TO BE SET SO THAT TOP IS SLIGHTLY BELOW ADJOINING ESTABLISHED GRADE.
- - INDICATES MINIMUM 5/8" X 36" GALVANIZED IRON PIPE OR IRON BAR TO BE SET LEVEL WITH ESTABLISHED GRADE ADJOINING IT.
- S.F. - SQUARE FOOTAGE
- R/W - RIGHT-OF-WAY
- L.S.E. - LANDSCAPE EASEMENT
- (NR) - NON-RADIAL
- D.B.U.E. - DRAINAGE EASEMENT AND UTILITY EASEMENT
- INDICATES 5/8" REBAR W/ YELLOW CAP
- INDICATES 5/8" SET UNLESS NOTED OTHERWISE STAMPED "FRM #0001"

NOTE THE FOLLOWING IS FOR INFORMATIONAL PURPOSES ONLY AND IS NOT PART OF THIS CERTIFICATION:
THE MINIMUM 100 YEAR FLOOD PROTECTION ELEVATION OF HAMILTON LAKE FOR LOTS WITHIN THIS ADDITION IS 904.70(N.G.D)



SUMMARY OF RESTRICTIVE COVENANTS
 MINIMUM FRONT YARD SETBACK = 25.00'
 MINIMUM REAR YARD SETBACK = 25.00'
 MINIMUM SIDE YARD SETBACK = 5.00'
 MINIMUM LOT SIZE = 7,200 S.F.
 MINIMUM ONE STORY = 930 S.F.
 MINIMUM TWO STORY = 850 S.F. (GROUND FLOOR)

* NOTE:
 THE COMMON LINE BETWEEN COMMON AREA "B" AND THE FOLLOWING LOTS ADJOINING COMMON AREA "B" (LOTS 1 THROUGH 102) IS THE EDGE OF WATER (BASED ON THE NORMAL POOL ELEVATION OF 898.95 FEET, N.G.D 1929) AS EXISTING UPON COMPLETION OF CONSTRUCTION OF THAT PORTION OF HAMILTON LAKE WITHIN COMMON AREA "B" OF THIS SUBDIVISION. A MEANDER LINE OF THAT EDGE OF WATER IS SHOWN HEREON. LOT ACRESAGES AND SIDE LOT LINE DIMENSIONS ARE SHOWN TO THE MEANDER LINE. FINAL LOT ACRESAGES AND SIDE LOT LINE DIMENSIONS MAY DIFFER AFTER LAKE CONSTRUCTION.

UNDER AUTHORITY PROVIDED BY I.C. 36-7-3-1 et seq. AND ORDINANCE ADOPTED BY THE TOWN COUNCIL, HAMILTON, INDIANA, THIS PLAT WAS GIVEN APPROVAL

APPROVED BY THE HAMILTON PLAN COMMISSION AT A MEETING HELD ON THE 17th DAY OF December, 2001

PRESIDENT: *Richard Getts*
 RICHARD GETTS
 SECRETARY: *Patricia A. Adersman*
 PATRICIA A. ADERSMAN

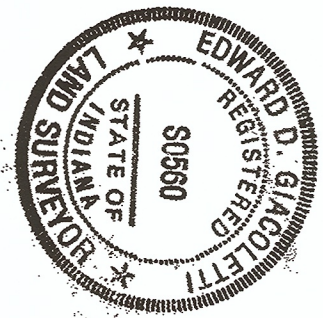
JAN 16 2002



Table of Corners

Corner	Description
U	5/8 inch rebar with yellow cap stamped "FRM #0001" set
V	5/8 inch rebar with yellow cap stamped "FRM #0001" set
W	5/8 inch rebar with yellow cap stamped "FRM #0001" set
X	5/8 inch rebar with yellow cap stamped "FRM #0001" set
Y	1/2 inch rebar found 0.1 feet up at southwest corner of Lot 4A. No point set at corner
Z	5/8 inch rebar with yellow cap stamped "FRM #0001" set
AA	5/8 inch rebar with cap stamped "BURDAGE RLS 870013" found
BB	5/8 inch rebar with cap stamped "BURDAGE RLS 870013" found
CC	5/8 inch rebar with cap stamped "BURDAGE RLS 870013" found

EDWARD D. GAIACOLETTI REGISTERED LAND SURVEYOR INDIANA #50960



02-01-0686

RECEIVED FOR RECORDS

2002 JAN 16 P 2 3 505 M.0000005

RECORDER STEUBEN COUNTY

2002 JAN 16 P 2 3 505 M.0000005

RECORDER STEUBEN COUNTY

2002 JAN 16 P 2 3 505 M.0000005

RECORDER STEUBEN COUNTY

2002 JAN 16 P 2 3 505 M.0000005

RECORDER STEUBEN COUNTY

2002 JAN 16 P 2 3 505 M.0000005

RECORDER STEUBEN COUNTY

2002 JAN 16 P 2 3 505 M.0000005

RECORDER STEUBEN COUNTY

2002 JAN 16 P 2 3 505 M.0000005

RECORDER STEUBEN COUNTY

2002 JAN 16 P 2 3 505 M.0000005

RECORDER STEUBEN COUNTY

2002 JAN 16 P 2 3 505 M.0000005

RECORDER STEUBEN COUNTY

2002 JAN 16 P 2 3 505 M.0000005

RECORDER STEUBEN COUNTY

2002 JAN 16 P 2 3 505 M.0000005

RECORDER STEUBEN COUNTY

2002 JAN 16 P 2 3 505 M.0000005

RECORDER STEUBEN COUNTY

2002 JAN 16 P 2 3 505 M.0000005

RECORDER STEUBEN COUNTY

2002 JAN 16 P 2 3 505 M.0000005

RECORDER STEUBEN COUNTY

2002 JAN 16 P 2 3 505 M.0000005

RECORDER STEUBEN COUNTY

2002 JAN 16 P 2 3 505 M.0000005

RECORDER STEUBEN COUNTY

2002 JAN 16 P 2 3 505 M.0000005

RECORDER STEUBEN COUNTY

2002 JAN 16 P 2 3 505 M.0000005

RECORDER STEUBEN COUNTY

2002 JAN 16 P 2 3 505 M.0000005

RECORDER STEUBEN COUNTY

2002 JAN 16 P 2 3 505 M.0000005

RECORDER STEUBEN COUNTY

2002 JAN 16 P 2 3 505 M.0000005

RECORDER STEUBEN COUNTY

The Schneider Corporation

Historic Fort Harrison
 8901 Ots Avenue
 Indianapolis, Indiana
 46216-1037
 317-828-7100 Fax
 317-828-7900 Fax

Formerly Schneider Engineering Corp. / Boulton, Meyer, Gibson & Assoc.

NORTHWEST HAMILTON LAKE DEVELOPMENT CO., L.L.C.
 CRYSTAL BAY
 COLUMBIA CITY, INDIANA

FINAL PLAT		CRYSTAL BAY SECTION ONE	
Date	01/03/02	Project No.	3746 002
Computer Files		Drawn	EDG
		Sheet No.	IP-3
			OF 5