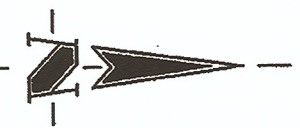


CRYSTAL BAY SECTION ONE PART S.W. & N.W. 1/4 SEC. 28-T36N-R14E STEUBEN COUNTY, INDIANA

RECEIVED FOR RECORDING
 2002 JAN 16 P 2 31
 RECORDER STEUBEN COUNTY
Shirley Ann Brown

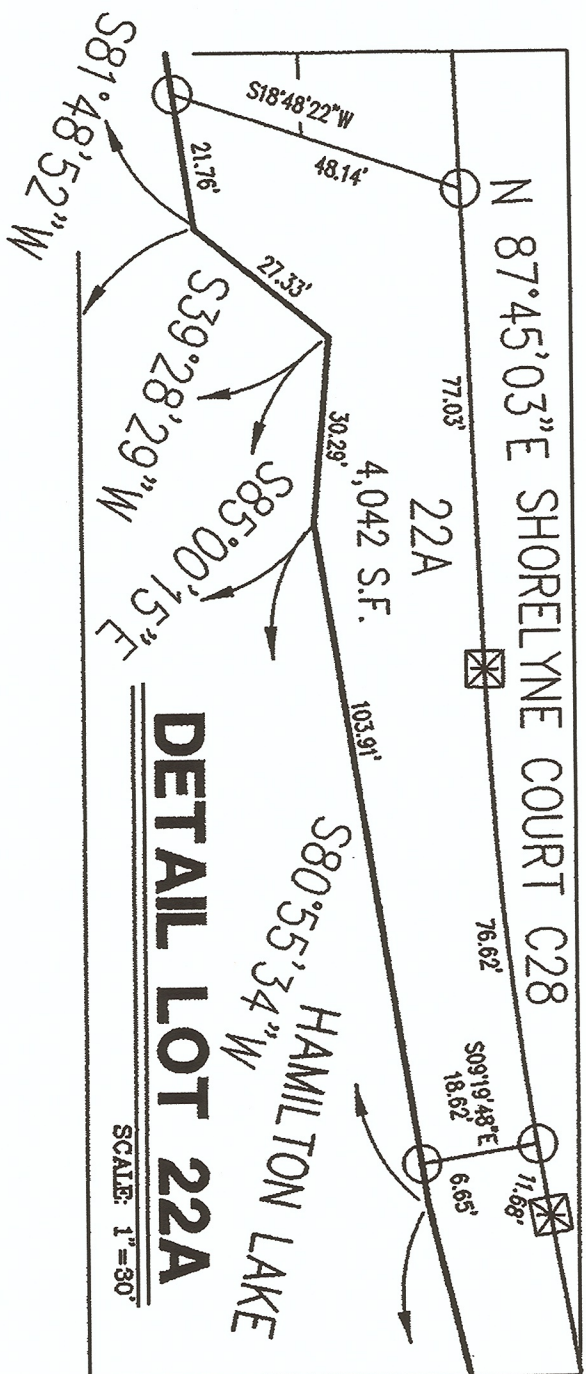
CRYSTAL BAY SECTION ONE PART S.W. & N.W. 1/4 SEC. 28-T36N-R14E STEUBEN COUNTY, INDIANA



ASSUMED NORTH

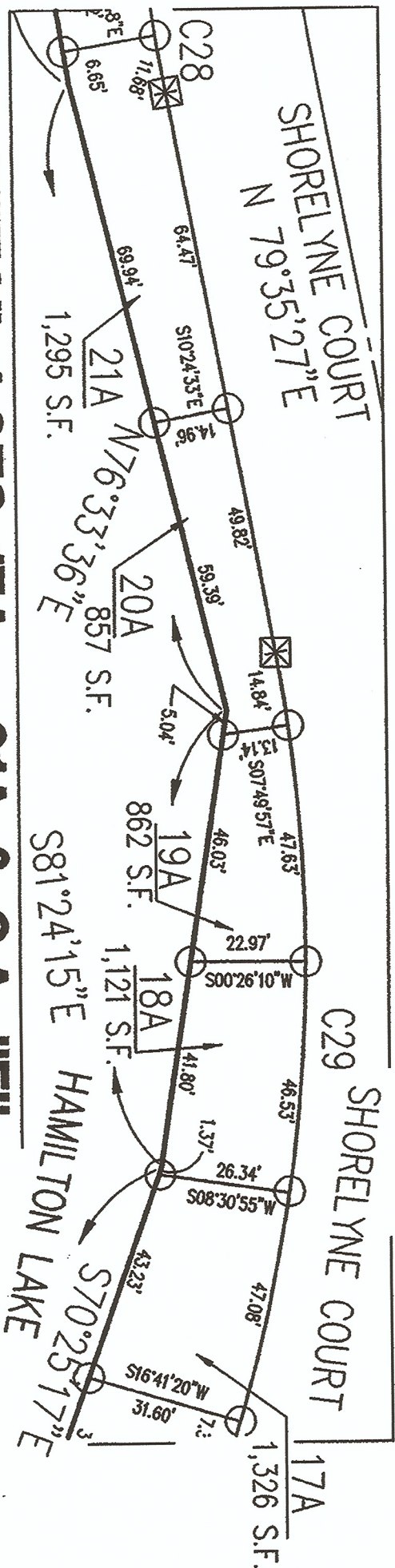
LEGEND

- ⊠ - INDICATES MINIMUM 4 INCH DIAMETER CONCRETE MONUMENT WITH CENTER MARKED ON TOP. MONUMENT TO BE SET SO THAT TOP IS SLIGHTLY BELOW ADJOINING ESTABLISHED GRADE.
- - INDICATES MINIMUM 5/8" X 36" GALVANIZED IRON PIPE OR IRON BAR TO BE SET LEVEL WITH ESTABLISHED GRADE ADJOINING IT.
- BL - BUILDING LINE
- S.F. - SQUARE FOOTAGE
- R/W - RIGHT-OF-WAY
- L.S.E. - LANDSCAPE EASEMENT
- (NR) - NON-RADIAL
- D.&U.E. - DRAINAGE EASEMENT AND UTILITY EASEMENT
- - INDICATES 5/8" REBAR W/ YELLOW CAP
- STAMPED "FRM #0001" SET UNLESS NOTED OTHERWISE



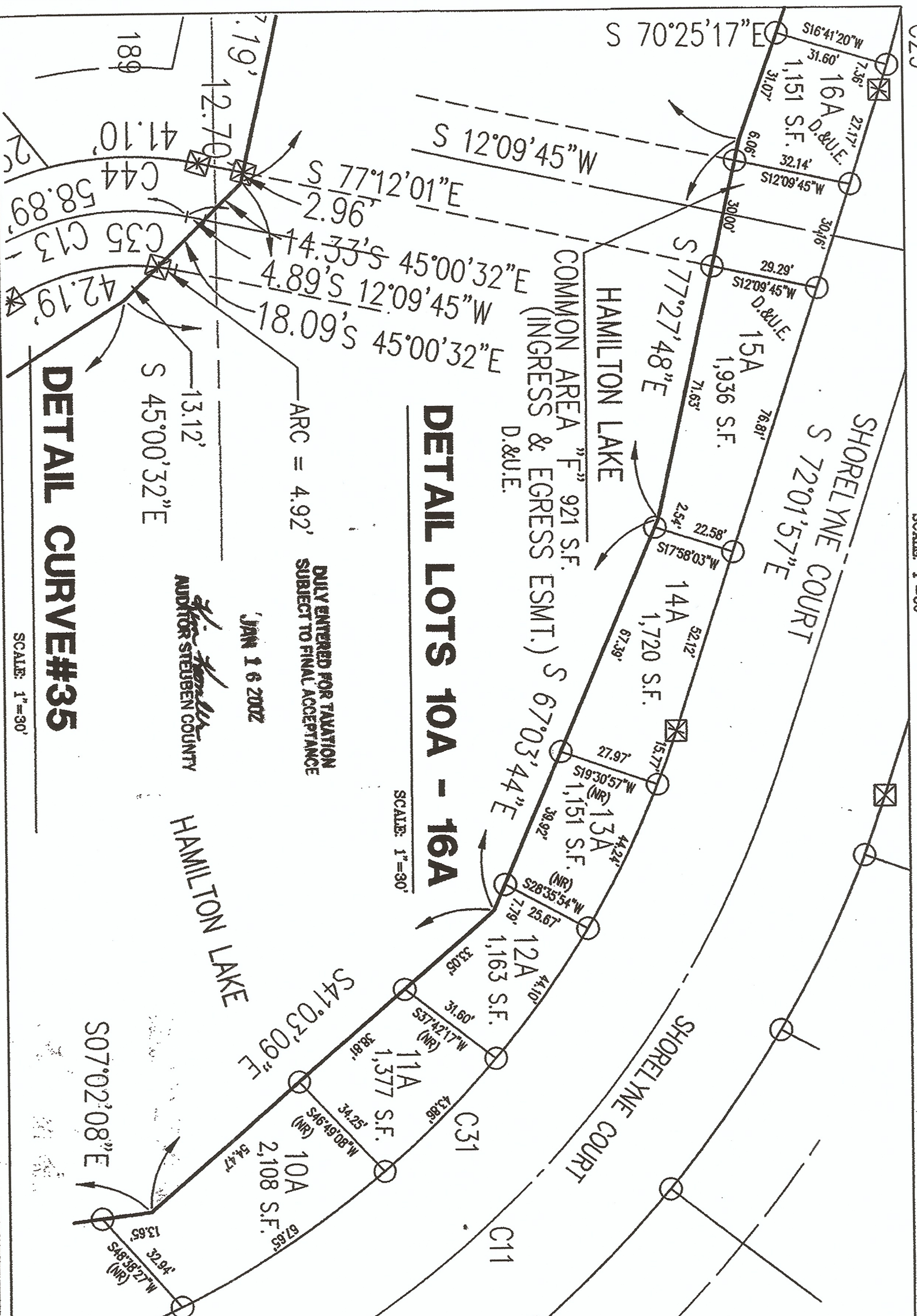
DETAIL LOT 22A

SCALE: 1"=50'



DETAIL LOTS 17A - 21A & C.A. "F"

SCALE: 1"=30'



DETAIL LOTS 10A - 16A

SCALE: 1"=30'

DETAIL CURVE#35

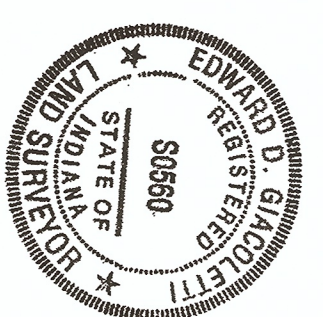
SCALE: 1"=30'

HAMILTON LAKE MEANDER LINE INFORMATION

LINE	LENGTH	BEARING	LINE	LENGTH	BEARING
L-1	37.87	N07°57'00"W	L-38	24.62	N03°35'00"W
L-2	26.00	M41°28'30"E	L-39	35.14	N41°24'00"E
L-3	26.00	M41°28'30"E	L-40	10.15	N01°16'57"W
L-4	38.81	S89°25'15"E	L-41	10.00	N01°16'57"W
L-5	38.08	M41°19'05"E	L-42	35.35	N45°16'37"W
L-6	54.44	M15°17'47"E	L-43	28.50	N01°16'57"W
L-7	30.00	S23°39'04"W	L-44	21.50	M43°43'23"E
L-8	30.00	M35°30'09"W	L-45	35.35	N01°16'57"W
L-9	30.00	M45°05'28"W	L-46	34.83	N07°52'42"E
L-10	30.00	M27°20'09"W	L-47	45.88	S89°51'07"E
L-11	30.00	M11°53'47"W	L-48	45.88	S89°51'07"E
L-12	30.00	M03°44'50"W	L-49	32.33	N78°33'29"E
L-13	30.00	S05°04'42"W	L-50	28.18	S68°17'04"E
L-14	30.00	N09°12'02"E	L-51	30.29	S29°07'37"E
L-15	30.00	N03°00'43"E	L-52	14.81	S33°28'32"E
L-16	30.00	M35°30'45"E	L-53	15.88	S07°50'56"W
L-17	30.00	M31°31'31"E	L-54	30.00	S20°20'37"E
L-18	30.00	M05°03'30"E	L-55	30.00	S04°53'43"W
L-19	30.00	S71°12'57"E	L-56	4.65	S04°53'43"W
L-20	30.00	S59°28'34"E	L-57	4.65	S12°43'28"W
L-21	30.00	S59°28'34"E	L-58	36.77	N01°21'58"E
L-22	30.00	S59°28'34"E	L-59	26.00	N01°21'58"E
L-23	30.00	S59°28'34"E	L-60	26.00	N01°21'58"E
L-24	30.00	S05°48'38"E	L-61	33.35	S73°58'04"E
L-25	30.00	N00°16'48"E	L-62	21.00	N01°21'58"E
L-26	30.00	N01°51'41"E	L-63	7.18	N01°21'58"E
L-27	30.00	M40°12'21"E	L-64	24.81	N01°21'58"E
L-28	30.00	M04°24'02"E	L-65	33.60	N01°21'58"E
L-29	30.00	M04°24'02"E	L-66	26.50	M43°30'54"E
L-30	30.00	S02°53'17"E	L-67	33.60	M43°30'54"E
L-31	30.00	S02°53'17"E	L-68	33.60	M43°30'54"E
L-32	30.00	S02°53'17"E	L-69	33.60	M43°30'54"E
L-33	30.00	S10°21'17"E	L-70	33.60	M43°30'54"E
L-34	30.00	S01°34'16"E	L-71	22.25	N23°43'18"E
L-35	30.00	N10°44'46"W	L-72	28.20	N23°43'18"E
L-36	18.79	N10°44'46"W	L-73	33.30	N41°16'28"E
L-37	25.38	S03°30'00"E	L-74	48.48	N41°16'28"E
L-38	25.38	S03°30'00"E	L-75	40.77	N09°42'25"E

CURVE	RADIUS	LENGTH	CHORD	DIRECTION	DETA
C1	300.00	38.84	38.81	N85°17'40"E	073208'
C2	300.00	38.84	38.81	S85°17'40"E	073208'
C3	300.00	18.94	18.94	N85°17'40"E	033703'
C4	1800.00	113.65	113.65	S85°17'40"E	033703'
C5	275.00	38.24	38.21	N05°15'38"W	053708'
C6	800.00	83.11	83.07	N01°41'58"E	053708'
C7	600.00	174.88	174.87	S08°57'37"E	164201'
C8	1000.00	195.58	195.28	N12°22'25"W	112242'
C9	380.00	178.29	178.48	N83°13'15"W	0809135'
C10	300.00	265.06	268.82	M46°43'16"W	507378'
C11	300.00	265.06	268.82	M130°38"W	163800'
C12	300.00	87.09	86.79	M130°38"W	163800'
C13	75.00	87.09	86.79	S101°19'E	081116'
C14	300.00	32.40	32.38	S55°55'03"E	271510'
C15	179.50	65.62	64.82	N57°15'11"E	053708'
C16	770.00	79.69	79.66	N01°41'58"E	053708'
C17	50.00	66.25	66.19	N23°43'18"E	363212'
C18	830.00	32.18	31.62	S15°54'34"E	363212'
C19	50.00	32.18	31.62	S15°54'34"E	164201'
C20	570.00	168.14	165.55	S09°37'37"E	164201'
C21	630.00	183.51	182.88	N10°19'58"W	073208'
C22	970.00	129.44	128.94	N10°19'58"W	073208'
C23	970.00	141.98	141.67	N08°59'41"E	073208'
C24	1030.00	33.77	33.13	N08°59'41"E	351431'
C25	50.00	30.76	30.28	N83°40'15"E	009136'
C26	590.00	79.75	79.69	N83°40'15"E	009136'
C27	620.00	88.30	88.22	N83°40'15"E	009136'
C28	330.00	163.44	161.77	N83°40'15"E	282235'
C29	300.00	163.15	161.85	N83°40'15"E	282235'
C30	270.00	238.55	230.87	M46°43'16"W	507378'
C31	270.00	238.55	230.87	M46°43'16"W	507378'
C32	530.00	291.85	288.17	N02°25'38"E	473514'
C33	50.00	19.42	19.30	S32°32'11"E	2218104'
C34	50.00	19.42	19.30	S32°32'11"E	4439116'
C35	60.00	47.17	46.91	N101°19'50"W	081116'
C36	315.00	34.02	34.00	S55°55'03"E	081116'
C37	285.00	30.78	30.76	S55°55'03"E	081116'
C38	27.00	29.09	27.70	N79°40'32"W	614335'
C39	100.00	40.50	40.22	N79°40'32"W	231102'
C40	470.00	65.43	65.38	N05°59'17"E	073834'
C41	60.00	52.85	51.85	N85°17'40"E	502820'
C42	1700.00	113.22	111.14	N80°25'20"W	380933'
C43	200.00	133.20	130.75	N80°25'20"W	380933'
C44	90.00	70.67	68.88	N101°19'50"W	4439116'
C45	41.88	65.47	64.88	N42°43'05"E	800000'
C46	1770.00	111.75	111.73	S89°54'52"W	033703'
C47	90.00	218.03	82.00	N81°15'26"E	2483918'
C48	50.00	221.43	80.00	N85°19'28"W	2534423'
C49	50.00	221.37	80.04	N81°50'53"E	2534423'
C50	30.00	126.57	51.50	S81°50'53"E	2414355'
C51	50.00	126.47	51.50	S21°40'04"W	1445100'
C52	20.00	31.78	28.52	M43°14'13"E	0133103'
C53	20.00	31.78	28.52	M43°14'13"E	0133103'
C54	20.00	30.15	27.38	M43°14'13"E	882257'
C55	20.00	31.42	28.28	S46°16'37"E	900000'
C56	20.00	31.42	28.28	S47°14'57"E	900000'
C57	20.00	31.42	28.28	S42°45'03"W	900000'

Ed D. Gaoletti
 EDWARD D. GAOLETTI
 REGISTERED LAND SURVEYOR
 INDIANA #50560
 DATED: *1/16/02*



UNDER AUTHORITY PROVIDED BY I.C. 36-7-3-1 et seq. AND ORDINANCE ADOPTED BY THE TOWN COUNCIL, HAMILTON, INDIANA, THIS PLAT WAS GIVEN APPROVAL.

APPROVED BY THE HAMILTON PLAN COMMISSION AT A MEETING HELD ON THE 17th DAY OF December, 2001

PRESIDENT: *Richard Nettles*
 RICHARD NETTLES

SECRETARY: *Patricia A. Ackerman*
 PATRICIA A. ACKERMAN

The Schneider Corporation

Historic Fort Harrison
 8901 Otis Avenue
 Indianapolis, Indiana
 46216-1037
 317-898-7100 Fax
 317-898-7300 Fax

Formerly Schneider Engineering Corp. / Boden, Meyer, Gibson & Assoc.

NORTHWEST HAMILTON LAKE DEVELOPMENT CO., LLC.
 CRYSTAL BAY
 COLUMBIA CITY, INDIANA

FINAL PLAT		CRYSTAL BAY SECTION ONE	
Date	Project No.	Drawn	Approved
01/03/02	3746.002	EDG	
Computer Files	Sheet No.		
Re: SK3746.002.DWG5.UBASE	IP-5		
		OF 5	