

# KANSAS HORSE COUNCIL



*Celebrating 26 Years of Membership!*



Major Sponsors



Brought to you  
by Kansas Horse Council

[Website](#) [About](#) [Contact](#) [Trails](#) [Calendar of Events](#) [Horse Care 101](#)



## Holidays 2019 Edition



**DONATE TO**  
**THE KANSAS HORSE COUNCIL FOUNDATION**



*Would you like to contribute to the future of the equine industry in Kansas? Consider donating to the Kansas Horse Council Foundation. Contributions provide scholarships to students involved in the equine industry.*

*We are currently seeking a Chairman volunteer position for the Foundation Board. Please contact Justine at Kansas Horse Council if you would be interested in this position. More information and requirements are available.*

***2019 Scholarships Recipients Awarded June 5th!***

***REFER TO OUR JUNE NEWSLETTER or FOLLOW OUR KANSAS HORSE COUNCIL FOUNDATION PAGE [HERE](#)***



***for a listing of the 2019 recipients and updates.***

**To learn more about the Foundation click below:**

**[Kansas Horse Council Foundation](#)**

**Follow and "LIKE" their Facebook Page, KANSAS HORSE COUNCIL FOUNDATION**

# DILLONS REWARDS AND AMAZON SMILE PROGRAM MEMBERS SALES PROCEEDS BENEFIT THE KANSAS HORSE COUNCIL FOUNDATION SCHOLARSHIPS PROGRAM



## DILLONS REWARDS PROGRAM

We are now renrolled in the Dillons Community Rewards program! Now, when you shop at Dillons and use your Rewards card, KHC will earn a percentage rebate based on your Dillon's purchases!

To link & register your rewards card click here: [Dillons Rewards Link](#) and log into your existing account. Search for Kansas Horse Council or enter our NPO number, KS920 and click Enroll. New users will need to create an account which requires some basic information, a valid email address and a

Purchases will not count towards rebates for KHC until you register your rewards card and link to Kansas Horse Council here:

[DILLONS REWARDS LINK](#)

Registered Rewards Cards must be swiped at checkout or use your phone number registered with your Rewards Card when shopping for purchases to count.

This program does not affect your Fuel Points balance. They will still accumulate for your personal use. Rebate program is based on purchases at Dillon's stores payable to Kansas Horse Council as a Non Profit Organization.

Thank you for your continued support to the voice of equine enthusiasts in Kansas!

Learn about Kansas Horse Council [HERE](#)

**AMAZON SMILE PROGRAM**

**\*Rewards Card.**  
**\*You must have a registered Dillons Food Stores rewards card account to link the Community Rewards program to Kansas Horse Council. (Cards are available for FREE at any Dillon's customer service desk.)**

**[SHOP DILLONS](#)**

Kansas Horse Council is also now enrolled in the Amazon.com Smile Program! When you shop

**[Amazon.com](#)**

you may select Kansas Horse Council as your Non-Profit charity upon Checkout!

KHC will receive .05% of your total purchase, of Amazon SMILE program eligible products! To learn more about this program and how it works go here:

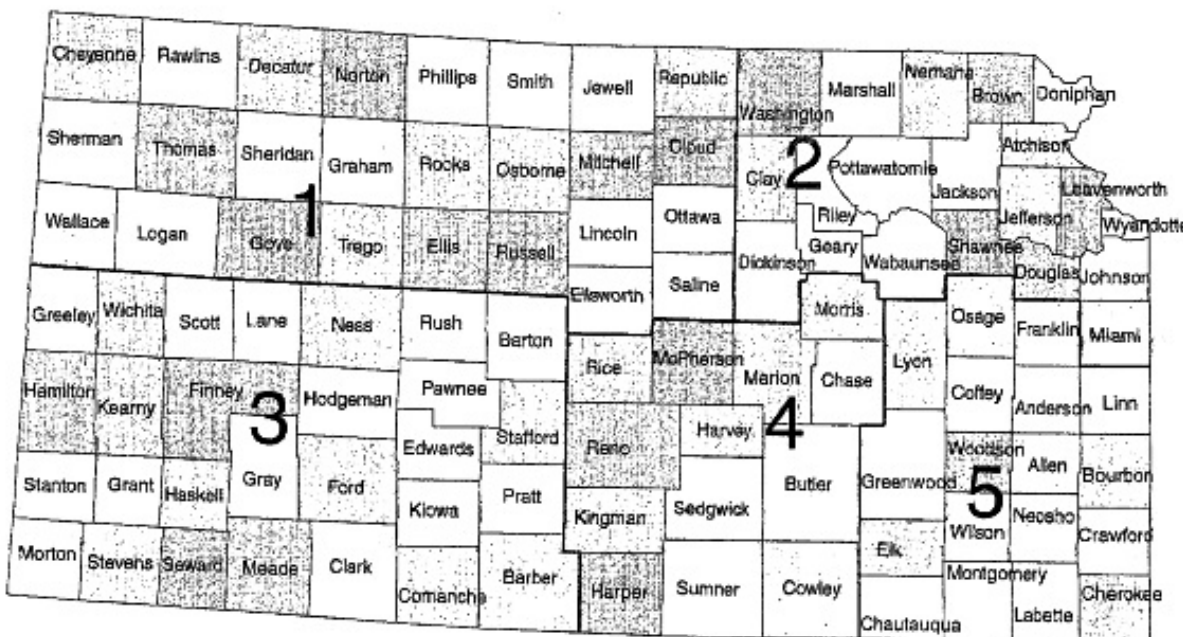
**[smile.amazon.com](#)**

**[SHOP AMAZON SMILE](#)**

## KANSAS HORSE COUNCIL DESIGNATED REGIONS



**The Regional Directors and Representatives help organize events and actively promote Kansas Horse Council throughout our State!**  
**Please refer to our region map below to see what region you reside in and get to know your Regional Director(s) and Representative(s).**  
**For a current listing of all our Regional Directors and Representatives in your area, click [HERE](#)**



# Eventful Time For Miss Rodeo Kansas 2019 As Home State Representative In Las Vegas At Miss Rodeo America Pageant

*By Frank J. Buchman*



Miss Rodeo Kansas has been "pretty busy." Life for Brooke Wallace is picking up speed and getting faster in the days ahead. All in the name of her favorite sport rodeo and her most apparent and highly promoted Western lifestyle.

"I've always loved everything to do with horses, horse people, and the Western way of life. Rodeo brings it all together as the best representation of traditional hard work and dedication for success."

Miss Rodeo Kansas 2019 Brooke Wallace has spread that important message throughout the state and across the land. She was in Las Vegas, Nevada, last week at the Miss Rodeo America Pageant in conjunction with the National Finals Rodeo.

"I've honorably served as a rodeo queen for several groups and being Miss Rodeo Kansas highlights them all," Brooke exclaimed. "This year has been the most exciting and fastest-paced of my life. I am so thankful for my family, friends, and sponsors in this unforgettable journey," she appreciated.

Native of New Cambria and former Miss Rodeo K-State graduating from Kansas State University, Brooke's home now is Council Grove. A

picturesque ranch at the northeast edge of town.

"Basically wherever my pickup and horses were has been my home on the road this year," she admitted. Last couple of weeks were spent preparing and traveling to the "entertainment capital of the world."

Saturday before competition was calming time with her Aunt Sara Prochaska chaperone who accompanied her there as they made personal pageantry arrangements.

"It was hectic from Dec. 1st when the pageant began and through coronation ceremonies December 8th," Brooke admitted.

Busy and hectic aren't unusual words for Miss Rodeo Kansas. "I've driven more than 30,000 miles representing the sport of rodeo at more than 78 venues this year," she calculated. That's been at professional rodeos, community programs, school functions and other activities. "It's been nonstop." Brooke admitted. "I'm so proud to have had the opportunity to tell so many about our great sport of rodeo.

"This 'job' never really felt like a job to me it has always been a true privilege," she continued. "My goal was never to say no to anything and experience everything offered to me. That was whether competing in a ranch rodeo, untying muddy calves or watching the Pendleton Round-Up on the grass."

While additional family and friends arrived to Las Vegas early in the week, Brooke's personal remuda was at the home ranch. "I drew for horses provided by the rodeo contractors and other owners specifically for the pageant," the queen said. A challenge in its own right, that was nothing new for this cowgirl. "I've been riding horses in all types of events most of my life," Brooke said. "While serving as Miss Rodeo Kansas, I've usually ridden horses provided by the rodeo contractors. Believe me; I've been on lots of different kinds of horses which is a positive for me in the horsemanship competition during the Miss Rodeo America pageant," she added.

Agenda for the week at Las Vegas Tropicana has been summarized: Check in was Sunday, Dec. 1st, with the public welcome as fashion show rehearsals began in the evening. Monday, Dec. 2, included horsemanship competition, with written tests, personality interviews and more rehearsals. Interviews and rehearsals continued on Tuesday, Dec. 3. Speeches and photogenic judging were Wednesday, Dec. 4, when horsemanship interviews were also scheduled.

More interviews and rehearsals were Thursday, Dec. 5, with highlight being attendance at the first performance of the National Finals Rodeo. Queen pageant contestants were presented on the Western Runway, the Cowboy Channel Red Carpet at Thomas & Mack Arena. Friday, Dec. 6, featured the fashion show late morning, with autograph signing before live stream of the second rodeo performance. The Justin Boot Parade with Miss Rodeo America contestants was Saturday afternoon, Dec. 7, at the Las Vegas Cowboy Christmas. After more autographing, there was a Cowgirl's

Saturday Night Out during the live stream of the rodeo. Miss Rodeo America 2020 Coronation was Sunday morning, Dec. 8, at 10:30.

Outfits worn by the beautiful cowgirl queen contestants have a major impact on certain judge's markings. Miss Rodeo Kansas looked to have a possible edge there.

Her college degree is in fashion design and professional career is creating Western outfits. "Other than the required wardrobes from the Wrangler sponsorship, I'll be modeling my own personal fashions," Brooke said. "That in itself makes the pageant even more unique and special to me."

Looking back over the last half decade, Miss Rodeo Kansas admitted, "I was still a stranger to rodeo. Now I can't imagine my life without it. I love the sport. I love the lifestyle. I love the people."

Looking over the seven days in Las Vegas, Brooke expressed gratitude. "I felt so honored to represent my home state of Kansas. No matter the outcome from this pageant, I want everyone to know, above all else I have never changed."

"I am who I am all of the time and that's what I presented during the pageant. If I'm not the right fit for the title I'll know I didn't stray from who I was," Brooke declared.

Miss Rodeo America serves as the official ambassador to the Professional Rodeo Cowboys Association. "It's a fulltime job representing the number one sanctioning body in the sport of rodeo," Brooke said. "That's 24/7 with more than 120,000 miles traveling throughout the country. What a great opportunity to serve such a wonderful sport."

Rodeo will always be a part of Brooke's life. "I'll be involved with horses, rodeo and the Western lifestyle in every way I know how. "Of course, my lifetime career will be designing Western clothing, especially working with rodeo queen outfits. It could go in many directions actually even into country music fashions," Miss Rodeo Kansas Brooke Wallace verified.

"Thank you for the support, love and encouragement," Miss Rodeo America Pageant contestant Kansas cowgirl Brooke Wallace acknowledged.

**RESULTS:** Brooke Wallace earned Third Runner Up Award, the Personality Award, was selected as Miss Congeniality by fellow contestants, plus won the Wrangler Jean Jacket Design Award!

**CONGRATULATIONS Miss Brooke Wallace!**



## 8th ANNUAL HC101 WORKSHOP

**HORSE CARE**  
**101**

"WINTER PREP"  
November 23<sup>rd</sup>, 7:30am to 3:30pm  
at K-State Vet Med in Manhattan, KS  
[www.kansashorsecouncil.com](http://www.kansashorsecouncil.com)

Followed by:  
Kansas Horse Council  
Annual Meeting and Meal  
4:30pm to 7:30pm at  
Stanley Stouf Center,  
Manhattan, KS  
[www.kansashorsecouncil.com](http://www.kansashorsecouncil.com)

**Kansas Horse Council**  
Veterinary Health Center  
at KANSAS STATE UNIVERSITY  
**HORSE CARE 101**  
Brought to you Each Year by  
Kansas Horse Council and Kansas State University

**THANK YOU** to all who attended our 8TH annual, HC101 workshop,  
and **THANK YOU** to all our sponsors!

**WE APPRECIATE YOUR SUPPORT!**

### 8th Annual HC101 Sponsored by:

**Vanderbilts in Wamego**  
**Think Animals**

**Timbercreek Veterinary Hospital in Manhattan**  
**Kansas State University**  
**College of Veterinary Medicine**

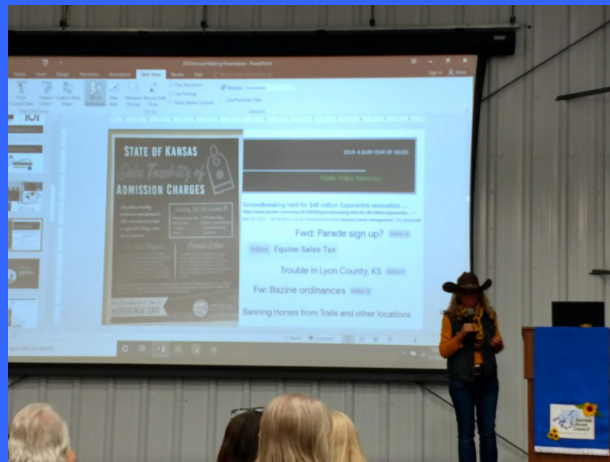
**The Drinking Post Watering System & Phalen Equestrian Center in Bonner Springs**  
**Kensington Products**



Merck Animal Health  
Purina,  
Perry & Trent, LLC  
R Bar B Topeka  
United Mosquito  
Valley Vet in Marysville



# 2019 KHC Annual Meeting Recap Held at the Stanley Stout Center in Manhattan, KS





**Big day for Kansas Horse Council, with dual events November 23rd!  
Our 8th Annual HC101, followed by the annual meeting at Stanley Stout Center!  
Dinner of roast beef sliders with sides for was served.  
Presentations were given by Dr. Justin Smith, KDA-Division of Animal Health, State  
Commissioner, covering various equine topics, and Linda Lanterman, Kansas  
Department of Wildlife, Parks & Tourism, Secretary of State Parks, recapping flood  
damage to our State Parks from this year and current conditions.**

**Named in honor of the founder of Kansas Horse Council, the Bud Newell Award is  
presented for outstanding service to the equine industry in KS. This year's recipient  
was Tera and Ken Benefiel for outstanding dedication and service, as volunteer  
coordinators for Equifest of Kansas since 2006!**

**Cowboy Poetry and entertainment was provided by Ron McDaniel plus an  
impromptu benefit auction for the Kansas Horse Council Foundation scholarship  
which raised \$825 from private lesson sessions donated by KHC member, Ashley  
Purdin of Equus Curito Equine Center, Jay Henson, 2020 Equifest Ranch Horse  
Versatility Clinician, and KHC member, NRHA competitor and reining  
trainer, Marcelo Guzman.  
Thank you for supporting the Kansas Horse Council Foundation Scholarship funds  
with your generous donations and purchases!**

**2019 is in the books...don't forget to renew your Kansas Horse Council membership  
for 2020, and Join the Horsemanship Rewards program in new year!  
Want to join as a new member? Learn more about Kansas Horse Council,  
visit: <https://kansashorsecouncil.com>.**

**Thanks for being a part of our herd!  
Memberships run on the calendar year, January 1st through December 31st.  
You don't have to be a resident of Kansas to enjoy our benefits.  
Visit our website to learn more.**

**EQUIFEST of KS 2020  
ANNOUNCEMENTS AND UPDATES!**

"Saddle and Sunflowers" all rights reserved by John Keeling Paintings



23RD ANNUAL



presented by



The Kansas Horse Council  
EquiFest of Kansas

Office: 785-776-0662

Fax: 785-539-2928

director@kansashorsecouncil.com

www.kansashorsecouncil.com

www.kansasquinedirectory.com

www.facebook.com/equifestofks

www.equifestofks.com



# Kansas' Premier, All-Breed Horse Fair & Exposition

[www.equifestofks.com](http://www.equifestofks.com)

Doors Open 9AM

\$15/day or \$35 for a 3-day Pass (12 & under free)

ADMISSION AVAILABLE ONLY AT EVENT



**INCREDIBLE CLINICIANS**

**WORKSHOP SPEAKERS**

**ARENA DEMONSTRATIONS**

**4-H STATE & OPEN HORSE JUDGING**

**WALL to WALL SHOPPING**

**FOUNDATION SILENT AUCTION**

**COWBOY POETRY, MUSIC, & ART**

**BATTLE OF THE BREEDS**

**HORSE SHOING COMPETITION**

**KIDS CORRAL**

**RANCH RODEO**

**SPECIAL ENTERTAINMENT**

[VisitSalinaKS.org](http://VisitSalinaKS.org)



ad@Livin' It Design

**Tony's Pizza Events Center  
& Saline County Expo Center**

**Salina, KS**

# March 6, 7, & 8, 2020



**2020 marks our 23rd year!**

*We are saddled up and heading west to Salina, KS.*

**Tony's Pizza Events Center and Saline County Expo Center, MARCH 6th-8th, 2020!**

You spoke, we heard!  
We've rolled ticket prices back to 2013!

Daily passes are \$15

3 day passes are \$35

Kids 12 & under are FREE

*Tickets available at the Tony's Pizza Events Center box office beginning March 6th...no advance ticket sales means saving you \$\$\$!*

## **HANG ONTO THE REINS EQUIFEST 2020 IS GALLOPING IN!**

We continue to recognize our 2019 sponsors [HERE](#)  
&

Greatly appreciate our [2020 sponsors](#)  
helping make 2020 the best one yet!

- VISIT [www.equifestofks.com](http://www.equifestofks.com) for EVENT INFORMATION!
- Updates are added regularly.
- Want to learn about things to do in Salina, KS?

[VisitSalinaKS.org](http://VisitSalinaKS.org)

**Visit HERE!**

PROUDLY BROUGHT TO YOU BY



## MAIN ARENA HEADLINERS

**ANNOUNCING OUR 2020 HEADLINER CLINICIAN,  
CHRIS COX!**

Visit his website [HERE](#)  
to learn more about this fan favorite!



**ANNOUNCING OUR 2020 DRESSAGE CLINICIAN,  
METTE ROSENCRANTZ!**

To learn more about Mette, visit her website [HERE](#)



Our 2020 Dressage  
Clinician, Mette  
Rosencrantz!  
March 6-8<sup>th</sup>

Salina, KS

Tony's Pizza Events Center  
[www.equifestofks.com](http://www.equifestofks.com)

**ANNOUNCING OUR 2020 STADIUM & CROSS COUNTRY  
JUMPING CLINICIAN,  
JOHN STAPLES!**

To learn more about John, visit his website [HERE](#)



**PREMIER PRESENTERS AT EQUIFEST OF KS 2020**



**SALINE COUNTY EXPO CENTER  
AG HALL ARENA  
PRESENTERS:**

**Jay Henson  
Ranch Horse Versatility**



**Sarah Track**  
**Saddle Seat Equitation**

**Ashley Purdin**  
**Tips for gaining your horse's focus and  
foundation skills for bridle-less riding.**

**Casey Hufstader**  
**Back Country Horse & Mule Packing**

**Laura Stimatze**  
**Working Cow Dogs**

**COMPETITIONS & SPECIAL DEMOS AT  
EQUIFEST 2020**

**Farrier Competition:**  
Watch the best farriers in Kansas compete in 3 divisions.

**Mounted Shooting:**  
Watch 3 divisions compete over Friday and Saturday.

**Battle of the Breeds:**  
Watch 8 horse/rider pairs showdown in 4 different events.

**Ranch Rodeo:**  
Watch 12 teams on Friday & Saturday nights compete in 4  
events.

**Hospitality Stall Decorations:**  
Check out the creativity on display in the Stall Barn.

**Breed Showcase:**  
See horses of all sizes and colors and learn their breed  
history.

**Located in our Kenwood Hall and 4H/Ponderosa  
Buildings, Saline County Expo Center side:**

- **Cowboy Poetry/Music**
- **Kid's Corral**
- **Kansas Horse Council Foundation Silent Auction**

- Cowboy Art Gallery & Sale/TPEC Main Lobby
- Shopping Inside & Out!
- Old Time Photo Booth
- Better Horses Radio and TV LIVE
- Food Trucks

Ranch Rodeo Friday & Saturday nights,  
Sponsored by:



Want more things to do while you're in Salina,  
KS for the weekend?

VisitSalinaKS.org


[VISIT HERE](#)

*Our EQUIFEST website is still "under construction" for 2020!  
Come back often for updates!*

Visit our website at: [www.equifestofks.com](http://www.equifestofks.com)

**WE HAVE LOTS MORE  
ANNOUNCEMENTS TO COME!  
STAY UP TO DATE!**

Like and follow us on 

and  for updates and announcements!

# **VESICULAR STOMATITIS**

## **In The News...**

We are sharing this as a courtesy for folks traveling from Kansas to these reported areas as of November 21, 2019.

### **USDA Current Situation Report Link**

Please be diligent or avoid if possible when traveling to these areas, and keep this from spreading to your home state.

More on this health alert from Kansas State University Veterinary Med., courtesy of July 2019, Trail Talk.

### **READ FULL ARTICLE HERE**

#### **Vesicular Stomatitis (VS): Outbreak Mitigation**

*By Dr. Caitlin Moreno, Intern, Equine Medicine and Surgery*

What is Vesicular Stomatitis?

Vesicular Stomatitis is a viral disease characterized by blister-like lesions found around the nose, lips, tongue, gums, teats, sheath, or coronary bands. The disease most commonly affects horses and cattle, but can affect sheep, goats, swine, and camelids. Although rare, the disease can be transmitted to humans that are exposed to the virus when handling infected animals.

### **Upcoming Events**



Want to know what's in store for 2020?  
Follow and "LIKE" our Facebook page for announcements  
or visit the Kansas Horse Council calendar of submitted  
state wide events available on our website  
[HERE!](#)

**Advertise in our Kansas Equine Directory! Equine  
services, businesses, events, venues and more!**



Do you have an Equine related business or monthly event  
to advertise in Kansas or close surrounding states?

Advertise for **FREE** in our **Kansas Equine Directory!** We  
want to be the source of your equine business for Kansas!

Create your **FREE** ad today [HERE!](#)

**Over 50 categories to choose from! Get listing today!**



## **PREVIOUS NEWS AND EVENTS** **THROUGHOUT KANSAS**

### **KANOPOLIS STATE PARK VOLUNTEER TRAIL DAY UPDATES AND PROGRESS**

Provided by Wendy of Kanopolis State Park

Thank you to all of the volunteers that came to clear trail on September 28th. 15 volunteers logged 90 hours and we cleared about 1 1/2 miles. Many more miles to go but we did put a dent in it.

October 19th work day progress: Thank you to the 15 people that came and worked on trails Saturday!!! We got another mile in shape including a re-route on a section of trail that was washed out. Still much more to do but making progress!

November 16th work day progress: A great big thank you to 10 dedicated hard working Volunteers, 1 AmeriCorps Member and 4 Full time staff members that came to Kanopolis State Park on Nov. 16th to work on trails. They logged 140.5 hours, bench cut a trail re-route, stacked 112 bags of concrete for a retaining wall, built 7 water diversion structures, cleared debris that was trapping water on the trails, carried and set 18 stepping stones on the nature trails and cut up a giant oak tree that had fallen on the nature trail. Amazing amount of work done by a small crew. We had our youngest volunteers to date, Zara 9 and Milo 7, they were on the water diversion crew and did a fantastic job. They were also involved with the proper placement of the stepping stones so we would make them the right distance apart for kids!

Several big chores accomplished, thank you to all!  
**NEXT SCHEDULED TRAIL WORK DAY IS SUNDAY,  
DECEMBER 15TH AT 8:30AM. CALL THE PARK OFFICE TO  
SIGN UP AT 785-546-2565.**

**DUE TO RECORD AMOUNTS OF RAINFALL THROUGHOUT  
THE MIDWEST, OUR STATE PARKS CAN USE YOUR HELP  
IN RECLAIMING FLOOD DAMAGED MULTI-USE TRAILS  
THROUGHOUT KANSAS. BUDGETS DON'T ALWAYS  
ALLOW FOR EXTRA MAN HOURS REQUIRED, AND STATE  
PARK USEAGE HAS BEEN IMPACTED SIGNIFICANTLY BY  
HIGH WATER DAMAGE IN 2019.**

## **JOIN OUR HERD!**

Ready to camp, ride & share stories with friends, old & new? Consider joining Kansas Horse Council! Not only do we have great membership benefits, but it's a great way to enjoy the outdoors with friends too! Memberships run from January 1 to December 31st of every calendar year! You don't have to be a current Kansas resident to be a member and enjoy membership benefits! Where ever you go with your horse, our \$1,000,000.00 Personal Excess Liability Policy has you covered!



**Are You a KHC Member?**

**Be part of the largest equine network in Kansas!**

**Membership supports:**

- fun and educational opportunities
- trail rides
- growth for the equine industry
- legislation and health concerns impacting the equine industry within KS
- helps secure the future of our equine-related jobs, recreation, and lifestyle.

**\$1,000,000 personal liability policy that covers all of your horses any time, any place; scholarship opportunities; discounts on liability signs, KHC trail rides**

and more!

## Membership Benefits

Go to Purchasing Package link below to see discounts you receive with KHC membership at Kansas-owned and national businesses!

**CLICK ON ANY HYPER LINK BELOW FOR MORE INFORMATION!**

[\\$1M Personal Excess Liability Insurance FAQ](#)

[KHC Member Purchasing Package Discounts](#)

[New for 2019! Horsemanship Rewards Program!](#)

What are you waiting for? [CLICK HERE AND JOIN TODAY!](#)

Want to know about equine events in Kansas? [KHC Calendar of Events](#)

["LIKE" KANSAS HORSE COUNCIL ON FACEBOOK & FOLLOW US ON INSTAGRAM TOO!](#)

## OUR EXCLUSIVE MEMBERSHIP REWARDS PROGRAM!

**IT'S TIME TO JOIN UP**

**EARN REWARDS**

**WANTED**

**ALL EQUINE LOVERS**

THE **KANSAS HORSE COUNCIL** PRESENTS

**HORSEMANSHIP REWARDS PROGRAM**

Earn rewards while working with your favorite equine friends! This program is open to anyone who enjoys working with horses, minis, donkeys, ponies, or mules, including "grade" equines.

This program recognizes participation in Equine Activities such as riding, schooling, competing, showing, training, ground work, driving, exercising, and assisting in a Therapy Program or Rescue. The program does not include feeding, stall cleaning and maintenance.

Awards are given at 25, 50, 100, 250, 500, 1000, 1500 & 2000 hour milestones. Upon 2000 hours completed, members are welcome to re-enroll and start again!

**PROGRAM RULES & REQUIREMENTS:**

- Must be a current KHC Member.
- Must pay a \$35.00 initial program enrollment fee the first year and then a \$15.00 annual program fee thereafter.
- May ride or handle more than one horse and it is not necessary to be the owner of the horse.
- Hourly log sheets may be submitted monthly, quarterly or annually. Annual submissions must be postmarked no later than December 31st.
- The KHC Member participant will need an individual membership to track member rewards by name.
- Rewards points are not retroactive. Date of log begins on enrollment date.
- Rewards are subject to change based on availability.

**FOR MORE INFORMATION CONTACT:**  
KANSAS HORSE COUNCIL, 8831 QUAIL LANE, SUITE 201, MANHATTAN, KS 66502  
www.kansashorsecouncil.com | 785-776-0662 | Fax 785-539-2928 | director@kansashorsecouncil.com

Want to earn GREAT rewards for spending time with a horse? We have that covered!! You don't have to be a horse owner to participate, just a current member of Kansas Horse Council!

Learn more about this new and unique member benefit (additional fees to join the Horsemanship Rewards Program do apply).

## [VISIT OUR WEBSITE HERE](#)

### [Announcing our two HRP participants to reach 500+ hours!](#)

CONGRATULATIONS DONNA DROGE and JAN MOORE!

JAN MOORE, our KHC Regions 2 & 5 representative, is currently in 1st with 574.5 hours logged!

DONNA DROGE, is currently in 2nd place with 537.5 hours...

CHERYL THOMAS, our Trails Council rep, and our KHC Secretary, has logged 402 hours reporting in at 3rd!

GAB HAMLER, is reporting 250 hours.

MARTY BLOOMQUIST, KHC Vice President, creator and administrator of our HRP program has logged 159 hours.

PATTIE STALDER, retired KHC Director has logged 150.5 hours.

JULIE DEYOUNG, is reporting 62.25 hours.

JEAN MCCORMICK, is reporting in at 58.5 hours.

YOU MAY CONTINUE TO LOG & SUMBIT HOURS THROUGH THE END OF DECEMBER! TO ROLL OVER HOURS TO 2020, YOU MUST RENEW THE PROGRAM FOR THE \$15 FEE IF YOU WERE ENROLLED FOR 2019. 1ST TIME ENROLLEE FEE IS \$35 WITH CURRENT MEMBERSHIP.

\*All hours are as of the December/Holidays newsletter release.\*

WAY TO GET OUT THERE AND LOG THOSE HOURS LADIES!  
Remember, you don't have to own your own horse to participate and earn rewards! YOU MUST BE A CURRENT KHC MEMBER AND A MEMBER OF THE REWARDS PROGRAM TO START LOGGING TODAY!

AS A MEMBER OF KHC AND THE REWARDS PROGRAM, YOU CAN EARN DOUBLE HOURS RIDING AT A KHC SPONSORED TRAIL RIDE, OR VOLUNTEERING FOR A KHC EVENT THAT INVOLVES HORSES!



**IT'S RIDING SEASON! SADDLE UP AND START LOGGING! ANY ACTIVITY WITH EQUINES COUNTS! GROOMING, CAMPING, VOLUNTEERING AT A SHOW, BUT SORRY...CHORES DON'T COUNT!**



## **HORSEMANSHIP REWARDS PROGRAM PARTICIPANTS AWARDED AT ANNUAL MEETING**

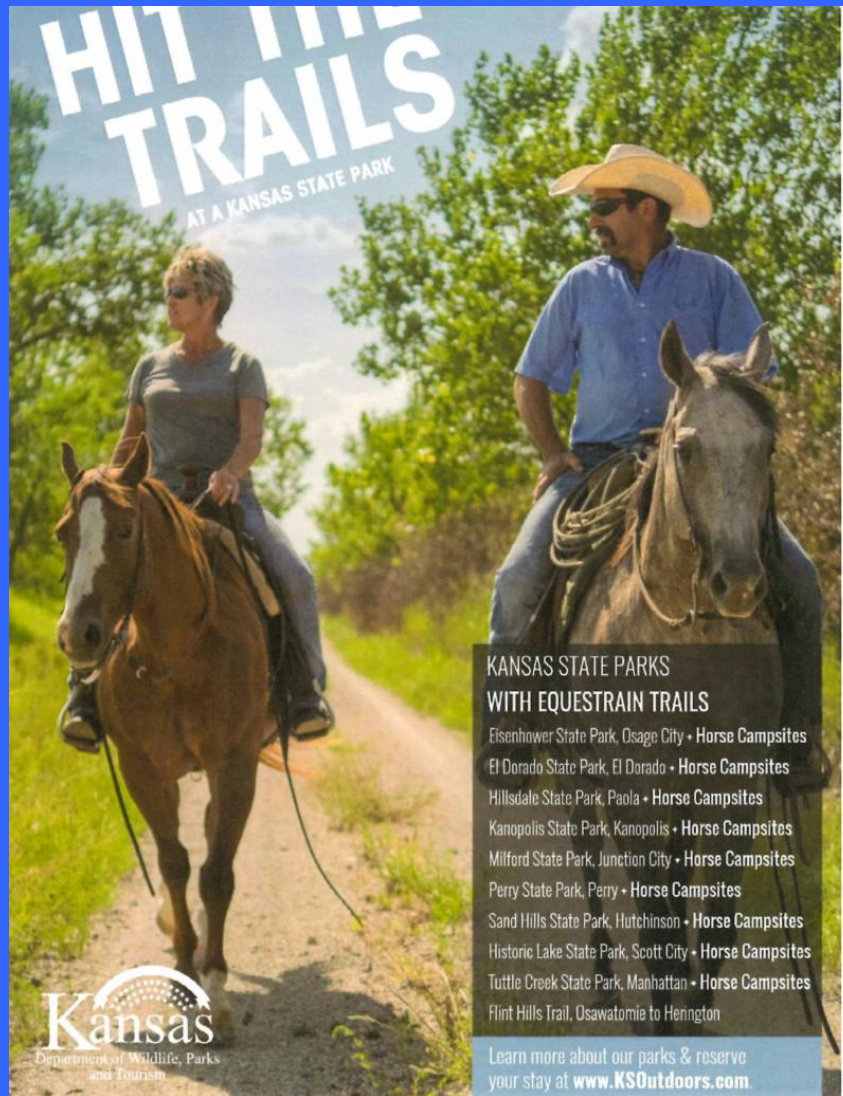


**Pictured L-R,  
Dennis Goodwin (KHC 2019 Board President),  
Kallie Emig (KHC Board Member)  
Jan Moore (KHC Regional Rep),  
Donna Droege,  
Cheryl Thomas (KHC Trails Chair),**

Gab Hamler (KHC Admin),  
Pattie Stalder (Past KHC Exec Director), and  
Marty Bloomquist (KHC 2019 Board Vice President, HRP Creator/administrator).

Thank you for participating in our Horsemanship Rewards Program for 2019!  
We have a new year ahead with new adventures! Let's ride!

## RIDE KANSAS



**HIT THE TRAILS**  
AT A KANSAS STATE PARK

**KANSAS STATE PARKS  
WITH EQUESTRAIN TRAILS**

- Eisenhower State Park, Osage City • Horse Campsites
- El Dorado State Park, El Dorado • Horse Campsites
- Hillsdale State Park, Paola • Horse Campsites
- Kanopolis State Park, Kanopolis • Horse Campsites
- Milford State Park, Junction City • Horse Campsites
- Perry State Park, Perry • Horse Campsites
- Sand Hills State Park, Hutchinson • Horse Campsites
- Historic Lake State Park, Scott City • Horse Campsites
- Tuttle Creek State Park, Manhattan • Horse Campsites
- Flint Hills Trail, Osawatomie to Herington

Learn more about our parks & reserve your stay at [www.KSOdoors.com](http://www.KSOdoors.com)

**Kansas**  
Department of Wildlife, Parks and Tourism

Due to high water and flooding conditions throughout our State, we ask that you please call any park before hauling to ensure accessibility of trails and overnight camping facilities. When visiting our parks, please clean up after yourselves, and respect the trails.

Refrain from riding during especially muddy conditions. VISIT this link for current Kansas State Park Alerts and Conditions:

**CURRENT STATE PARK ALERTS**



**FREE EQUESTRIAN TRAIL GUIDES ARE  
AVAILABLE AT ALL OUR STATE  
PARKS**  
**or request a copy of the full color 2018  
edition Equestrian Trails in Kansas  
guide [HERE](#)**

**THANKS TO ALL OUR VOLUNTEERS & BACK COUNTRY HORSEMAN  
OF AMERICA, KANSAS CHAPTER, FOR YOUR HARD WORK IN  
MAINTAINING ALL OUR KANSAS TRAILS!**

**AND REMEMBER...**

**RIDE KANSAS**  
**USE IT OR LOSE IT**  
**IF YOU PACK IT IN, PACK IT OUT.**  
**LEAVE ONLY HOOFPRIENTS BEHIND**  
**LET TRAILS DRY BEFORE YOU RIDE**

**TWO PARKS IN KANSAS DESIGNATED FOR EQUESTRIAN  
USE ONLY! WILD HORSE AT PERRY AND SADDLE RIDGE AT  
HILLSDALE!**

For the horse campers out there, two Kansas Department of Wildlife and Parks, State Parks are now designated for equestrian use, only. Meaning, non-equestrians may not reserve spots in Wild Horse Camp, Perry State Park (Lake Perry) or Saddle Ridge Campground, Hillsdale State Park (Hillsdale Lake). You must have a horse to camp in these areas as designated equestrian campground use only.

**For reservations, please contact the respective park offices, Wild Horse Equestrian Camp is still listed on [Reserve America.com](http://ReserveAmerica.com).**

**[PERRY STATE PARK INFORMATION HERE](#)**

**You must contact the Hillsdale Park Office to reserve a campsite in the Saddle Ridge Equestrian Campground at Hillsdale State Park.**

**[HILLSDALE STATE PARK INFORMATION HERE](#)**

**Allowing only equestrians in these parks, is safer for everyone. Equestrians have limited, designated areas, and this helps to preserve them.**

**While visiting our State Parks, please don't litter on the trails. If you pack it in, pack it out. And clean your pens prior to departing.**

**Thank you for respecting while visiting our State Parks and natural resources,**

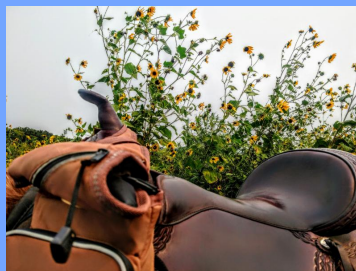
and the efforts to preserve them for equestrian use.

Stampede on down to your County Courthouse to get your  
official KHC license plate!  
(KHC membership is not required to show your love for horses!)  
Read more about it here:

[KHC License Plate](#)



**GIDDY UP AND SHOW YOUR LOVE FOR HORSES!**



**ENJOY RIDING THE TRAILS IN KANSAS?  
JOIN BACK COUNTRY HORSEMEN OF KANSAS TODAY!**

**BCHA-Kansas**

*Dues of \$45/individual, \$50/family include both Kansas and national memberships. Find out more about BCHA and read their Mission Statement at [BCHA of Kansas Chapter Info](#)*

*BCHA-Kansas is committed to keeping track of hours spent by volunteers across the state maintaining trails and keeping our public trails open. In 2014, trail volunteers have accumulated well over 2,000 hours and have raised several thousand dollars for Kansas public trails and camps that are open to equestrians! This information continues to have an impact and improves equestrians' relationships with land managers.*

*Across the US, there are 13,000 BCHA members and chapters in 29 states! For a membership form or information, contact Steve Lindsey, [steve.lindsey@lia-ks.com](mailto:steve.lindsey@lia-ks.com).*

**Our 2020 Membership Purchasing Partners offering Kansas  
Horse Council Member Discounts with your current KHC  
Membership card.**

SHOW YOUR MEMBERSHIP CARD AND GET 10% OFF AT THESE PARTICIPATING KANSAS & OKLAHOMA BUSINESSES



**Rittel's Western Abilene**



For Equine Equipment Savings, discounts off Exmark, Farmpaint, Tenda and Toro, call or email to set up your Member account.

Email: [sales@equineequipment.com](mailto:sales@equineequipment.com)

Phone: 877-905-0004



Information on accessing these USEF Fan Club Member Perks

Can be found on insert in your KHC member packet.

To enjoy the benefits of one stop shopping with discounts, call NTRA Advantage to set up your account. 866-678-4289. See National Brands below:



We are pleased to offer these 2020 Kansas Horse Council Membership Discounts. Visit [Kansas Horse Council](http://KansasHorseCouncil.com) to learn more about our organization. You don't have to be a Kansas resident to become a member.  
**JOIN OUR HERD!**

[EquiFest of Kansas](#)

[American Horse Council](#)

[Kansas Equine Directory](#)

[Purchase Liability Law Warning Sign](#)

[Join Kansas Horse Council](#)

[Speciality Equine License Plate](#)

[BLM Mustang Adoption](#)

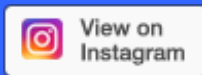
[Back Country Horsemen](#)



**SIGN UP FOR  
OUR EMAILS**

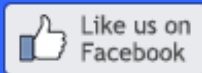


**SHARE THIS  
EMAIL**



**Find us on**

**Facebook & Instagram**



**Kansas Horse Council**

**785-776-0662**

**director@kansashorsecouncil.com**

**http://kansashorsecouncil.com**