

*KANSAS HORSE COUNCIL NEWSLETTER.  
NEWS FOR KANSAS AND THE EQUINE  
INDUSTRY.*

**January 2023 EDITION**

News, announcements and events from around Kansas,  
regarding the Kansas equine industry.

Legislation, Insurance, Equipment & Retail discounts are  
just some of our membership benefits! Visit our website to  
learn more.

Join our herd!



Visit our  
Website!



**JOIN OR RENEW FOR 2023!**



[www.kansashorsecouncil.com](http://www.kansashorsecouncil.com)

[2023 Upcoming Events and Calendar](#)

There are many fun upcoming opportunities to get out with your horse this month, from ropings to barrel races!

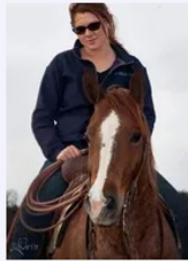
See them here:  
***Calendar of Submitted Events***

Any questions regarding events, please call us at  
**785-776-0662**

If interested in more information or to register for an event, please email us at  
**director@kansashorsecouncil.com**

## Your 2023 Board of Directors!

**Kallie Emig**



**President**

- Equifest Chair
- Nominations
- Education Chair

**Craig Barnett, DVM**



**Vice President**

- Legislative
- Animal Health
- EquiFest
- Sponsorship

**Frank Buchman**



**Board Member**

- Membership
- Marketing
- Public Relations

**Danielle Crouch**



**Board Member**

- Public Relations
- Marketing
- Membership

## Fred Gardner



### Board Member

- Legislative
- Animal Health

## Shanda Mattix



### Board Member

- Education
- Marketing
- Membership
- Public Relations

## Molly Olson



### Board Member

- EquiFest
- Marketing
- Membership
- Public Relations

## Sheryl Strathman



### Board Member

- Marketing
- Membership
- Public Relations
- Nomination

## Jen Stalder



### Board Member

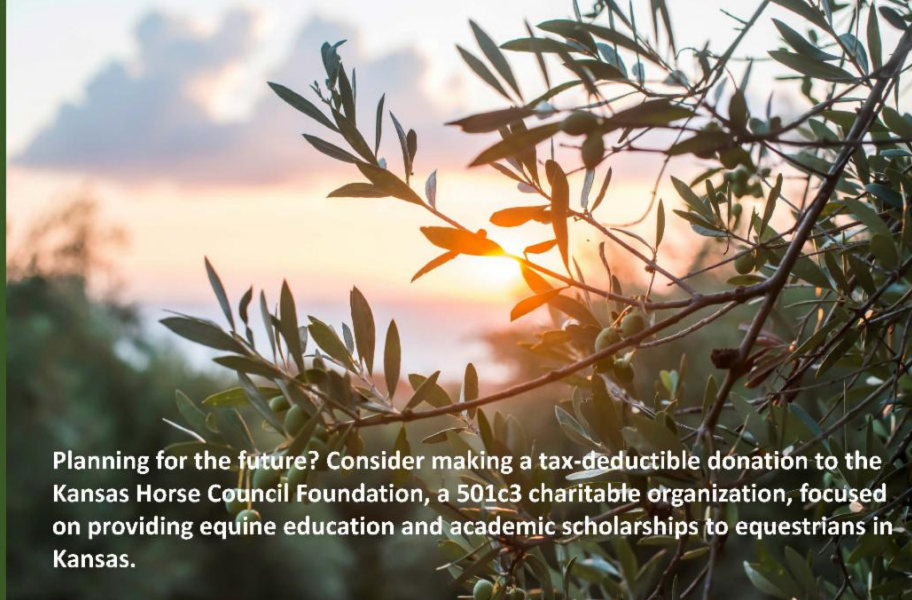
- Marketing
- Membership
- Public Relations





Giving a shoutout to these participants and the hours they've logged enjoying time with their equine friends!

100 hours - Jessica Kish  
250 hours - Emily Neises  
250 hours - Delana Dee Crist  
250 hours - Angie Nord Huss  
500 hours - Diane Ransom  
500 hours - John Zeliff  
1,000 hours - Frank Buchman  
1,000 hours - Jim Thomas  
1,500 hours - Cheryl Thomas  
3,000 hours - Kelley Hamersky  
3,000 hours - Jan Moore



Planning for the future? Consider making a tax-deductible donation to the Kansas Horse Council Foundation, a 501c3 charitable organization, focused on providing equine education and academic scholarships to equestrians in Kansas.

## Effective stockmanship adds to the bottom line

... and it's the right thing to do

Written By Piper Whelan

For Curt Pate, handling cattle in an effective manner is vital to a stockman's success.

"What we really need to think about are what the effects of our cattle handling are doing to the performance of our cattle," he said during the 2018 Western Canada Feedlot Management School in Regina.

Pate, who came into the spotlight after working on the film "The Horse Whisperer," gives colt starting, horsemanship and stockmanship clinics across North America. For many years, he made his living starting colts. "I don't know any other job that requires you to change an animal to perform for you more than a colt starter," he said.

"You don't know where that colt's going to go. He might go to a kid, he might go to the futurity down in Fort Worth. So, you start that animal in a way that he can go wherever you want him to go. That's the way I look at cattle handling. We've got to handle these cattle in a way to get our job done, but they can still perform when we're done."

[Read the complete article here!](#)



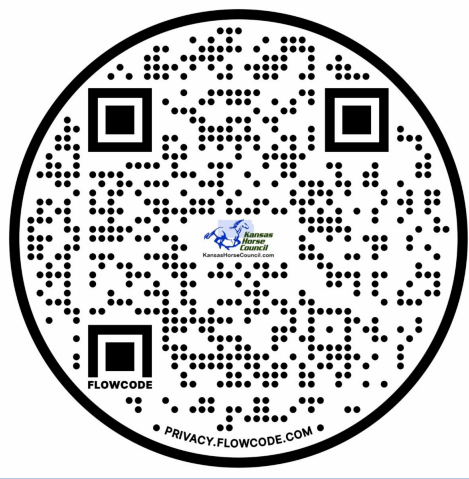
Want to hear more about Curt Pates philosophies on stockmanship and horsemanship? Come see him at EquiFest 2023!

## Don't Miss This Great KHC Benefit:

Subscription opportunity to The Horse Magazine at 90% DISCOUNT off retail- Only \$5 for the year to Kansas Horse Council Members!

*the* **HORSE**  
YOUR GUIDE TO EQUINE HEALTH CARE





Scan the QR Code to sign-up for your reduced subscription  
TODAY!!

## Check this OUT!!

### **Broken New Year's Resolutions Are Not Really A Serious Deal**

By Frank J. Buchman

"New Year's resolutions are made to be broken."  
At least that's the way it seems. Lots of folks figure out things that can be done to improve their selves beginning January 1.

Somebody researched it and claimed over 88 percent of Americans make at least one resolution for the New Year. Most common are lose weight, have more money, quit smoking, see the family, maintain a budget, find improved job, eat correctly, get organized, exercise harder, and be a better person.

Being closer to the Lord savior and especially thankful for all His blessings didn't make the Top Ten. But they're really the most important. Personal resolutions are to pray harder, especially expressing appreciation for all received, and seeking guidance in all to be done. Of course, not eat so much, procrastinate less, contact friends, spend additional time horseback, and write more stories.

Surveys show not even 20 percent are successful in keeping one resolution. New Year's Eve is for celebrating. In olden days, many country folks went to the 11 o'clock movie. At midnight, Auld Lang Syne played and everybody wearing party hats blew whistles and threw confetti. Family kissed and hugged while cowboys hoped for another smooch from their

girlfriends. Years later, dances at the Armory became popular. However, it's bedtime for most older ones, who try to stay up later at home, but not 'til midnight.

On New Year's Day, most just relax and recuperate. Television parades used to feature trick roping cowboy Montie Montana and his horse Rex. But they're gone, although horses are still the best part of parades. Traditional New Year's Day dinner calls for ham, black-eyed peas, cabbage, and donuts. That's supposed to bring good luck for 365 days.

It is proper to take the scythe, whip the old year good-bye, and look to the birth of a fresh beginning. Babies are symbols of the New Year, and reminder of the nativity of Jesus Christ, savior. New Year's resolutions have been considered paganism, making taking a walk with God more important.

Rebirth and living hope come in First Peter 1:3: "Praise be to the God and Father of our Lord Jesus Christ. In his great mercy, He has given us new birth into a living hope through the resurrection of Jesus Christ from the dead."

Further proof of no need for New Year's resolutions comes in the promise found in Jeremiah 29:11. "For I know the plans I have for you, says the Lord. They are plans for good and not for disaster, to give you a future and a hope."

Likewise, is the pledge in Second Corinthians 5:17: "Therefore, if anyone is in Christ, he is a new creation. Old things have passed away; behold all things have become new."

Watch for the new EquiFest of KS website coming soon!



## A New Year Calendar

*by Delbert Shields*

I got it from the feed store. They offer them every year.

Right there on the counter, where I order





feed for steers.

I normally pick the funny one. It's full of cowboy humor.  
Pictures of broncs and broke down trucks, and cows with big ole tumors.

Come January one I get my pen, I write down all my dates.  
Grandkids birthdays, my anniversary, and the taxes on our real estate.

The months go by, and pages turn. The seasons come and go.  
I like the ones that are cool and fresh, but I despise the ones with snow.

Yes, them ole calendars are reminders, that time is passing by.  
I see the dates of loved ones passed, and get water in my eye.

They show the age of children grown, of grandchildren aging too.  
They remind us when that rusty truck was purchased and brand new.

It's pages point one direction, toward the future, not the past.  
But that's why it seems so encouraging. If only it didn't go so fast.

But, those old calendars serve as memory books, like treasures of bronze we cast.  
Reflections of the ages. Our children's firsts and lasts.

Time doesn't stop for any man. You can't turn back it's pages.  
But I wouldn't trade one single day, for a millionaire's full wages.

...MAY THE GOOD LORD BLESS YOU IN ALL YOU DO IN 2023. HAPPY NEW YEAR.

**Joint membership with KHC & BCH-KS for you!**



## Kansas Chapter



### **JOINT MEMBERSHIP AVAILABLE IN BOTH ORGANIZATIONS!**

Individual: \$80 (\$15 to BCHA/\$15 to BCH-KS/\$15 to KS Chapter of Choice/\$20 for insurance/\$15 to KHC)  
Family: \$100 (\$15 to BCHA/\$15 to BCH-KS/\$15 to KS Chapter of Choice/\$40 for insurance/\$15 to KHC)

Trails Advocate Level Individual: \$80

Trails Advocate Level Family: \$100

One enrollment to support two organizations!  
Simple and makes sense!

*the* **HORSE**  
YOUR GUIDE TO EQUINE HEALTH CARE

## Before Your Mare Foals

By: Lucile Vigouroux

*Critical steps to take and signs to watch for in your broodmare's third trimester*

Few things bring breeders more joy and satisfaction than welcoming their long-awaited foals. But those in the breeding industry know arriving at this milestone is no small feat. Bringing a horse into the world involves thoughtful matching of sire and dam, months of careful preparation, and a major financial investment. So whether you are a first-time breeder or a seasoned breeding farm manager, you want everything to go well. Here are some tips to help your mare's third trimester run smoothly.

## Changes That Occur During the Third Trimester

The average equine gestation lasts about 320 to 360 days, depending on the mare; each has her own gestational length, and the day she foals is often repeatable from year to year. The final 100 days of gestation (third trimester), however, bring their own unique developments, changes, and challenges. At this stage the placenta is fully developed and produces progesterins, including the hormone progesterone, that help maintain the pregnancy to term. The fetus, enveloped by the amnion, grows exponentially. In fact, most of the growth occurs during that last trimester—the foal is only about the size of a house cat (8-15 pounds) at six months but weighs upward of 100 pounds at birth.

Read More on Nutrition, Preventitive care, vaccines, Avoiding abortion and preparing for foaling [here](#)



Save the Date

THURSDAY MARCH 16<sup>th</sup> to  
SUNDAY MARCH 19<sup>th</sup>, 2023

**EQUIFEST**  
OF KANSAS

SALINA, KS

Kansas Horse Council

The poster features a background image of a large crowd at an outdoor arena event. In the foreground, several riders on horses are lined up. The text is overlaid on the image, including a yellow sticky note with the words 'Save the Date', the event dates in gold, the 'EQUIFEST OF KANSAS' logo in red and black, the location 'SALINA, KS' in gold, and the 'Kansas Horse Council' logo in blue and white.





## Chef Alli's Rotisserie Chicken and Potato Casserole

### Ingredients

- 6 Tbs. butter
- 8 oz sliced button mushrooms
- 1 small onion, diced (may substitute 1 tsp. granulated onion)
- 1 red bell pepper, seeds and membranes removed, diced
- 1/4 cup all-purpose flour
- 2 cups milk
- Kosher salt and black pepper, to taste
- 2 large potatoes, peeled, diced and cooked until tender
- 2 cups shredded cooked chicken
- 1 cup shredded cheddar cheese

### Instructions

- Preheat the oven to 350°F
- In a large skillet over medium heat melt the butter. When the butter is gently sizzling, add the mushrooms, onions, and bell peppers; cook for a few minutes until the veggies are softened, 8-10 minutes.
- Sprinkle the flour over the vegetables in the skillet; cook for 1 minute, stirring often.
- Remove the skillet from the heat and gradually stir in the milk. When the milk has incorporated into the flour a bit, return the skillet to

the burner.

- Cook the sauce for 2-3 minutes, stirring, until nicely thickened; season to taste with salt and pepper.
- Into a greased 11x8 baking dish, add the shredded chicken and potatoes; pour the sauce and mushroom mixture over the top, then sprinkle with cheese.
- Bake on the center oven rack for 30-35 minutes or until hot and bubbly throughout and 160 degrees F. at the center.
- Let the casserole rest for 5 minutes before serving.

## Kansas Horse Council Specialty License Plate

- Kansas Horse Council license plates are available at your local County Treasurer's office.
- You don't have to be a member to sport one, on your car, truck or trailer!
- Show your love of horses with this colorful statement plate!

### KHC License Plate Info



**ENJOY THE RIDE WITH KHC!!**

**GET A KANSAS HORSE COUNCIL TAG**  
PROUDLY SHOW YOUR SUPPORT FOR KHC AND THE WORK IT DOES.

**KANSAS HORSE COUNCIL PLATES**  
are available to anyone who owns or leases an automobile, RV, truck or trailer with a gross weight of 20,000 pounds or less.

**WHAT YOUR TAX DEDUCTION SUPPORTS**

- RECREATIONAL AND TRAIL MAINTENANCE
- EQUINE HEALTH AND WELFARE
- EDUCATION PROGRAMS
- YOUTH ACTIVITIES AND SCHOLARSHIPS

**HOW TO GET YOURS:**  
TROT over to your County Treasurers Office  
FILL OUT a Kansas Royalty Tag form  
PAY a one time production charge of \$50.00 plus title fees, registration fees, personal property tax and a \$50 donation to the Kansas Horse Council. The \$50 tax deductible donation will appear on your paperwork every year when you renew! If the vehicle is currently tagged, the original plate must be returned and the current owner's registration and proof of insurance will need to be provided.

**Kansas Horse Council**  
[www.kansashorsecouncil.com](http://www.kansashorsecouncil.com)

# "Bombproof"

Western Horseman  
Written by Kelly Nuebert



## Is it counter-intuitive for me to boldly state that a horse dubbed “bombproof” scares me a little?

See, hearing that term always brings a hint of skepticism to my mind. I know horses exist who can walk through a live minefield and have no reaction, but usually they aren't something most folks would be particularly excited to ride, and people for whom this is a pre-requisite might be a tough fit for most of the horses in the world (and the situations they may face).

Now, I'm not trying to kill anyone's sale. I do understand it's a blanket term and should be taken as meaning that a horse is VERY gentle. I get it, but I hear so many people these days state they need a horse that's basically bombproof. It's a tough fit, one that may even come with a little backlash in the future, should said horse ever spook. I'm comfortable with stating when something is safe to ride, but bombproof? Who wants to run into someone years later, with a busted lip and gimp in their step from a fall-off, shaking their fingers at you, saying “You sold him to me as bombproof!”

To be honest, I don't think that shopping for a bombproof horse is a very easy task, or a very realistic one. As sellers, we understand the term is sacred and should not be diluted. It's reserved for the 2% of horses that really have been through the ringer, seen it all, done it all and boldly march into the circus ring without flicking an ear. Most of us love selling horses that are safe, sound and sane, but when I get buyers who say “bombproof,” I usually tell them I don't think I have what they are looking for. Even my most gentle horses and ponies might react to something I cannot anticipate. In fact, my personal feeling is it's preferable to have something with a little self-preservation, most days. I once had a pony that was gentler than a drugged tortoise, but when Luke would fire up his welder, he would startle. I've seen old, worldly geldings tied to trailers in my driveway try to rip the ring off the side of their Featherlites when they see my old pet pig stroll by. Even if they leave my place with my brand, as gentle as a person could want them to be, who can guarantee it will carry throughout every experience of their lifetime?

I buy horses, too, and I would never have the expectation of “bombproof” from a seller. The biggest thing about a potentially gentle mount is their disposition, temperament and broke-ness. Sure, a horse is gentle and



seasoned, but if we encounter something unexpected or startling on the trail, does he have the right buttons and pieces to make sure my kid, mother-in-law, etc. can still stay safe?

Please know this is not an absolute truth. Some horses really do fit the bill. Good people sell bombproof horses and they are, indeed, the safest thing on four legs. There are plenty out there and I applaud the folks who make them and the ones who seek them out. Most people who use the term carelessly to describe something that may spook sometimes are probably not trying to be malicious or deceptive - that's just been their experience with the mare or gelding. I'm just calling to attention the fact that the word "bombproof" is something to really think about before putting it in a description, whether we are buying or selling.

Now, tell me about something that doesn't whirl at an emu, snort at a llama, or set back at a pig passing by, and you've got yourself a sale, my friend.



## BACK COUNTRY HORSEMEN OF KANSAS

*What's the best way to stay informed of BCHKansas news and activities?*

### ***Follow Facebook.***

There are several Facebook pages set up to keep BCHKansas members and all equestrians up-to-date on activities on several of our public trails. Here's a list:

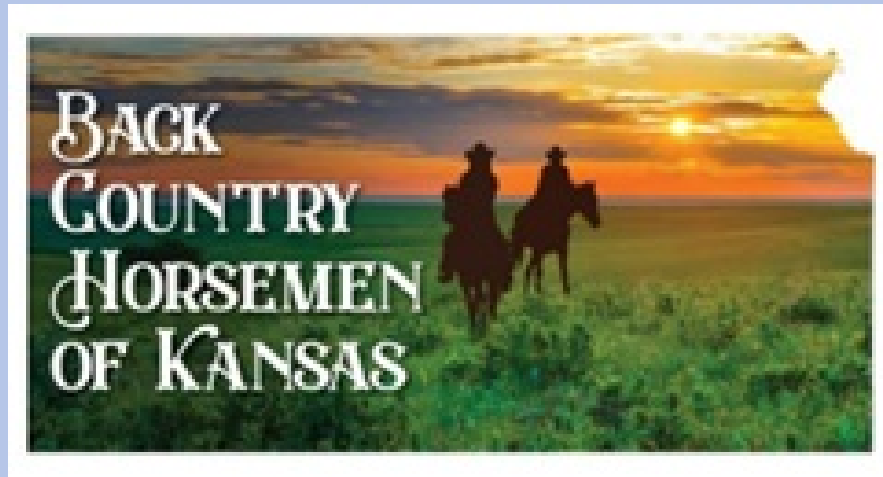
Back Country Horsemen of America Kansas Chapter  
Sunflower Chapter of Back Country Horsemen of Kansas  
Saddle Ridge Chapter of Back Country Horsemen of Kansas  
Tuttle Creek Chapter of Back Country Horsemen of Kansas

Saddle Ridge Chapter  
Big Hill Lake Riders  
Friends of Randolph State Park  
Friends of Rockhaven Park  
Let's Ride—Perry Lake  
Kanza Rail Trails Conservancy

Receive notifications of workdays or see reports on trails-maintenance or campground improvements. Join in on workdays whenever possible!

Follow the [www.bchkansas.com](http://www.bchkansas.com) website.

Encourage a new member to join BCHKS and be entered into an end-of-year drawing.



## Kansas Horse Council Rewards Programs

### **DILLONS COMMUNITY REWARDS PROGRAM:**

- When you shop at Dillons and use your Rewards card, KHC will earn a percentage rebate based on your Dillon's purchases!

To link & register your rewards card click here: [Dillons Rewards Link](#) and log into your existing account. Search for Kansas Horse Council or enter our NPO number, KS920 and click Enroll. New users will need to create an account which requires some basic information, a valid email address and a \*Rewards Card. \*You must have a registered Dillons Food Stores rewards card account to link the Community Rewards program to Kansas Horse Council. (Cards are available for FREE at any Dillon's customer service desk.) SHOP: Purchases will not count towards rebates for KHC until you register your rewards card and link to Kansas Horse Council here:

DILLONS REWARDS LINK Registered Rewards Cards must be swiped at checkout or use your phone number registered with your Rewards Card when shopping for purchases to count. This program does not affect your Fuel Points balance. Points will still accumulate for your personal use. Rebate program is based on purchases at Dillon's stores payable to Kansas Horse Council as a Non-Profit Organization. Thank you for your continued support to the voice of equine enthusiasts in Kansas!

### **AMAZON SMILE PROGRAM:**

Kansas Horse Council Foundation (Scholarship Fund) is also now enrolled in the Amazon.com Smile Program! When you shop Amazon.com you may select Kansas Horse Council Foundation as your Non-Profit charity upon Checkout! KHCF will receive .05% of your total purchase, of Amazon SMILE program eligible products! To learn more about this program and how it works go here: [smile.amazon.com](http://smile.amazon.com)





## Joking January

What's black and white and eats like a horse?

A zebra.



**IT'S TIME TO JOIN UP** **EARN REWARDS**

# WANTED

## ALL EQUINE LOVERS

**THE KANSAS HORSE COUNCIL PRESENTS HORSEMANSHIP REWARDS PROGRAM**

**Earn rewards while working with your favorite equine friends!**  
This program is open to anyone who enjoys working with horses, minis, donkeys, ponies, or mules, including "grade" equines.

This program recognizes participation in Equine Activities such as riding, schooling, competing, showing, training, ground work, driving, exercising, and assisting in a Therapy Program or Rescue. The program does not include feeding, stall cleaning and maintenance.

Awards are given at 25, 50, 100, 250, 500, 1000, 1500 & 2000 hour milestones. Upon 2000 hours completed, members are welcome to re-enroll and start again!

**PROGRAM RULES & REQUIREMENTS:**

- Must be a current KHC Member.
- Must pay a \$35.00 initial program enrollment fee the first year and then a \$15.00 annual program fee thereafter.
- May ride or handle more than one horse and it is not necessary to be the owner of the horse.
- Hourly log sheets must be submitted monthly, quarterly or annually. Annual submissions must be postmarked no later than December 31st.
- The KHC Member participant will need an individual membership to track member rewards by name.
- Rewards points are not retroactive. Data of log begins on enrollment date.
- Rewards are subject to change based on availability.

FOR MORE INFORMATION CONTACT:  
**KANSAS HORSE COUNCIL, 8831 QUAIL LANE, SUITE 201, MANHATTAN, KS 66502**  
[www.kansashorsecouncil.com](http://www.kansashorsecouncil.com) | 785-776-0662 | Fax 785-539-2928 | [director@kansashorsecouncil.com](mailto:director@kansashorsecouncil.com)

Saddle up with Kansas Horse Council Horsemanship Rewards members only program! Earn prizes for spending time with horses!

Be sure to renew your KHC membership for 2023 and pay your HRP renewal fee- \$15, to rollover your hours into the





New Year!

Logs are submitted quarterly.  
Saddle up, ride and earn rewards...it's a  
great way to start a NEW year!

For more details visit:

[Horsemanship Rewards Info](#)

Thanks to our Friends of KHC Sponsors below  
for their support of the HRP program!

KHC would like to thank you for sponsoring our HRP program!



Total Feeds



Shawnee Woodwork  
Inc



FEED GREATNESS®

**V**ALLEYVET.COM



Learn About Kansas Horse Trails! RIDE Kansas!

Saddle Up and RIDE Kansas! Visit our Kansas Department of Wildlife and U.S. Corps. of Engineers equestrian facilities. Visiting and riding or camping shows support of our parks, and keeps them open for future use and possible funding of improvements. Always leave only hoofprints behind.



Share our multi-use trails. Call before you haul if in doubt before your visit. [KDWP State Parks info.](#)

Do you have your copy of our Equestrian Trails in Kansas? Copies are provided FREE at all Kansas Horse Council events, or \$3 for s/h and we'll mail you one. These guides are also available at all KDWP offices. Trail info is also available online here: [Public Trails in Kansas](#)





Kansas equestrians deserve a big pat on the back for another impressive year of volunteer work on public trails! Our public land managers and other trail organizations continue to be impressed by the dedication of equestrians to taking care of the trails we love to ride.

BCHKS volunteers reported the following for 2021 - 3,783 hours, with a value of \$259,326 in labor and supplies.

Since BCHKS started keeping track in 2014, equestrian volunteers in Kansas have contributed - 23,000 hours, with a value of \$1,250,943 in labor and supplies!  
We do make a difference!





Happy New Years!



**JOIN OR RENEW FOR 2023!**



[www.kansashorsecouncil.com](http://www.kansashorsecouncil.com)

Kansas Horse Council | 8831 Quail Lane, Suite 201, Manhattan, KS 66502

[Unsubscribe director@kansashorsecouncil.com](mailto:director@kansashorsecouncil.com)

[Update Profile](#) | [Constant Contact Data Notice](#)

Sent by [director@kansashorsecouncil.com](mailto:director@kansashorsecouncil.com) powered by



Try email marketing for free today!