



Join the **LARGEST EQUINE NETWORK** in Kansas.  
[Join or Renew Now](#)      [LIKE Us On Facebook](#)  
*Visit the [KansasEquineDirectory.com](http://KansasEquineDirectory.com) site now.*

## KHC Newsletter May 2013

### In This Issue

[Calendar of Events](#)

[Are You There?](#)

[Homes for Horses](#)

[Liability Law Signs](#)

[Equine Farm Safety Training](#)

[Purina Contributes Free Feed](#)

[AHC National Issues Forum](#)

[Legislative Update](#)

[Are You a KHC Member?](#)

[Equestrian Trails in Kansas](#)

### Quick Links

[Kansas Horse Council](#)

[EquiFest of Kansas](#)

[Unwanted Horse Coalition](#)

[American Horse Council](#)

## Calendar

### May & June

The KHC website contains a full listing of events including saddle club meetings, trail work days, parades, clinics, etc.

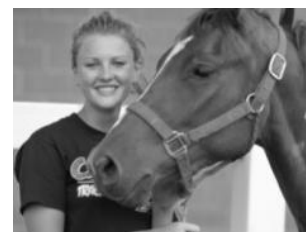
**For a complete listing [CLICK HERE](#).**

[Click Here](#) for Kansas barrel racing dates/events

### [Are You There?](#)

## Equine Farm Safety Training: Improving Safety for Youth Working on Horse Farms

Have you ever worked on a horse farm or at an equine facility? Maybe you've had to deal with a bad-mannered horse, or possibly know someone who has been injured while working with horses. Now you have an opportunity to learn how to be safe while working with horses at any equine facility by taking these FREE online courses. The courses include activities, links and lots of fun. At the end of each course you will receive a certificate of completion.



Take just one or take all 11-you decide!

- \*Horse Behavior
- \*Horse Handling
- \*Horse Manners
- \*Grooming
- \*Horse Keeping - Daily Care and Management of Horses
- \*Training & Exercising
- \*Machine & Chemical Safety
- \*Traveling with Horses
- \*Biosecurity on Horse Farms
- \*Horse Health
- \*Employer/Employee Relations

[Click here for more information or to register](#)

## Purina Contributes Free Feed to Equine Shelters

Purina Animal Nutrition has pledged up to \$150,000 in free feed to rescue shelters through its continuing partnership with A Home For Every Horse. A Home for Every Horse is a program dedicated to finding homes for horses in need of adoption or fostering. For the second year in a row, Purina has pledged a base donation of \$125,000. From April 16 to August 21, Purina will donate an additional \$1 for every



**Purina Mills**

For the second year in a row, Purina has pledged a base donation of \$125,000. From April 16 to August 21, Purina will donate an additional \$1 for every

This site is FREE, EASY To USE and available to everyone involved with horses in and near Kansas.

Farriers, vets, trainers, western stores, breeders, feed stores, equine photographers, artists, horse haulers, saddle clubs, insurance companies, etc. -- the Kansas Horse Council created this site Just For You!

**Click Here to  
Post Your Ad Now.**

**Homes for Horses  
Ready for Adoption**



### **Delilah**

Delilah came to us from a county seizure in June 2010. Since then she has had a lovely foal that was adopted after weaning. Delilah has been ridden and is ready to be adopted.

The May 2013 featured rescue comes from the: [Hope in the Valley Equine Rescue.](#)

This monthly feature provides contact details for a horse adoption in Kansas. Please contact the rescue or adoption service directly. Thanks!

*Be Actively Involved --*

new "Like" or "Share" it receives through Facebook, up to \$25,000, for a potential total of \$150,000 in free feed.

[To learn more click here.](#)

## **American Horse Council National Issues Forum**

The American Horse Council has announced that its theme for this year's National Issues Forum is "A Healthy Horse, A Healthy Industry." These two concepts are co-dependent. Our horses need a viable, growing industry, supported by the public, to ensure they are enjoyed and can get the best care; and fundamental to our industry is a healthy horse that can be moved interstate and internationally for breeding, showing, racing, sale and recreational riding. There are a number of continuing efforts to accomplish these goals that will be the focus of the National Issues Forum.

[Read More . . .](#)



## **Legislative Update**

Thanks to everyone that took the time to contact their state legislators regarding HB 2055. The bill did not pass out of the senate. If it had it would have ended any possibility of re-opening Kansas race tracks for the next 30 years.

[Obama Budget Eliminates Funding For Horse Slaughter Plant Inspections.](#)

[Three New Members Elected to American Horse Council Board](#)

---

### **Are You a KHC Member?**

You may be receiving this monthly newsletter because you belong to a Club that's joined KHC. If so, why not become a member yourself so you receive 100% of the benefits provided by membership, especially the -

**\$1,000,000 Personal Liability Insurance Policy.**

If your club/organization isn't affiliated with KHC, why not? Club memberships are only \$35.

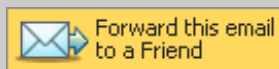
## KS Liability Law Signs

Remember - if you don't have a Kansas Liability Law sign posted on your property - you are not covered by the this law. Protect yourself and order yours today.

\$30 for members  
\$40 for non-members  
(Price includes tax + S/H)  
Go on-line,  
[www.kansashorsecouncil.com](http://www.kansashorsecouncil.com) or call the office @ 785-776-0662

## About Us

We are here for you. Since 1992 the KHC has worked for the horses and horse owners of Kansas. Call us at 785-776-0662 or [director@kansashorsecouncil.com](mailto:director@kansashorsecouncil.com)



[Back To Top](#)



**If you ride in parades, compete at shows, trail ride or have friends ride your horses; it's your responsibility to maintain appropriate liability coverage.**



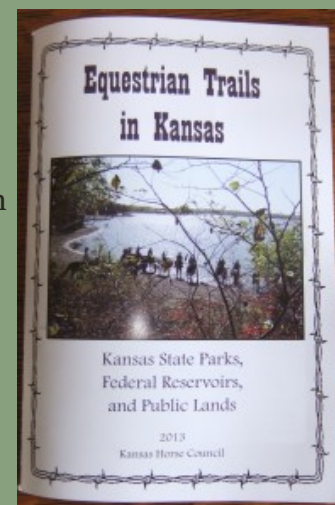
**[CLICK HERE to Join the Largest Equine Network in KANSAS!](#)**

## Equestrian Trails in Kansas - 2nd Edition

If you're a trailrider make sure your saddlebag has the **newest** trail guide available. You'll have all the information you need to select which trail suits you best.

Our *Equestrian Trails in Kansas 2nd Edition*

contains updated and uniform maps for trails in all Kansas State Parks, federal reservoirs and public lands, plus lots of other valuable



information.

[Back To Top](#)

**Order your copy today!**

Call 785-776-0662 or mail your check for \$3 to:  
Kansas Horse Council  
8831 Quail Lane, Ste. 201  
Manhattan, KS 66502

**Our Price: \$3.00**  
**S & H: \$ included**

**Save \$\$**



Remember as a KHC member you receive discounts at many Kansas merchants and national businesses. Take your membership card with you when you shop at **RB Outpost, Roy Frey Western, Classic Equine Stall Systems, Grasspad Warehouse** or on-line at [equinebusinessforms.com](http://equinebusinessforms.com).

For national vendors call 866-678-4289 before you shop to enjoy your membership advantages at John Deere, UPS, Sherwin Williams, Office Max, Valvoline, Equine Travel Advantage, NTRA Rx Discount Card.

**Take advantage of these generous offers - they are for KHC members only.**