



SNAP PAC SYSTEM™  
Software & Controllers

**OPTO 22**  
Your Edge in Automation.™

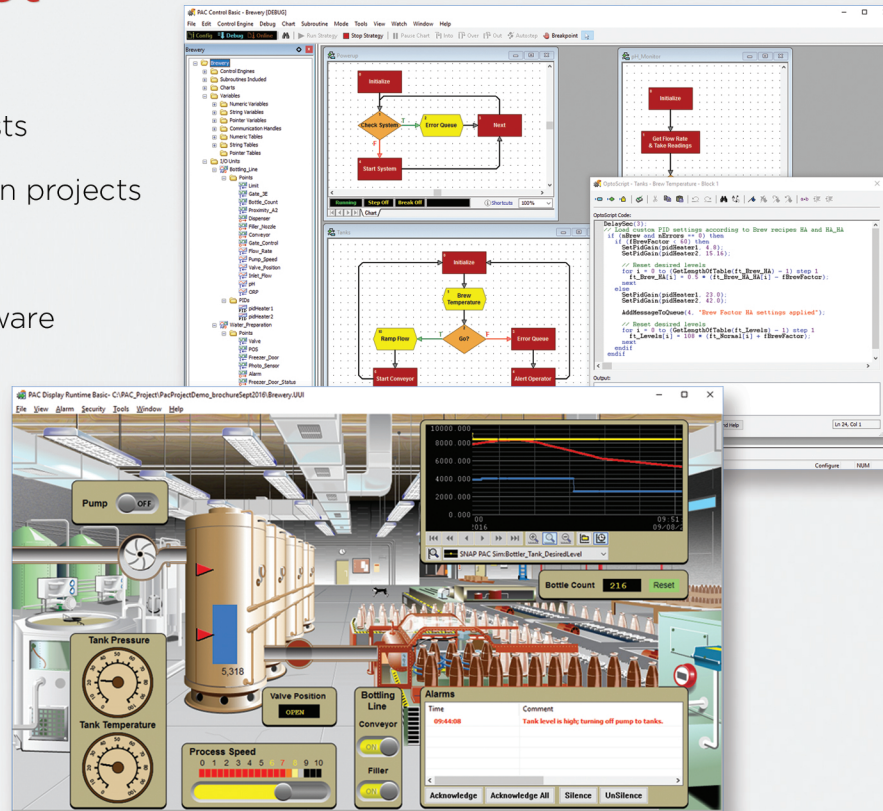




## Consider the SNAP PAC System for Your Next Project

- > Simple to understand and use
- > Lower capital and long-term costs
- > One system for many automation projects
- > Advanced programming tools
- > Connectivity to third-party software and devices
- > The best I/O in the business

- Program using plain English commands.
- Flowchart-based control programming for novice and expert developers.
- Human-readable tag names. No cryptic register entries or memory locations.
- Optional scripting for advanced control programming and flexibility.
- Debug in real time with built-in interactive debugger, including real-time PID loop tuning.



PAC PROJECT™ SOFTWARE SUITE

Sensors and Actuators

PAC with Edge Computing

Cloud and Local Database Applications



- Advanced edge data processing
- Report by exception



R SERIES

- Secure HTTPS server and RESTful API
- Controller with scalable rack-mounted I/O
- Compact package
- DIN-rail or panel mounted



S SERIES

- Secure HTTPS server and RESTful API
- Optional redundant controllers
- Legacy *mistic* I/O support

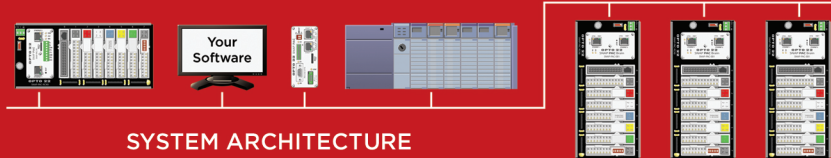
SoftPAC™



- PC-based controller for software-based control
- Complex calculations
- Extensive data storage
- Frequent access to files

### IIoT and Developer Toolset

- Securely access control system I/O points and variables through documented RESTful API and HTTPS server.
- Quickly move control system data to local databases or cloud-based applications.
- Use any programming language that supports JavaScript Object Notation (JSON).
- Close the OT/IT gap and enable rapid IIoT application development.
- Reduce time to market in machine and system design.
- Deploy automation and control projects quickly and easily.
- Node-RED nodes available for SNAP PAC controllers for rapid IIoT application development.



- Over 250 different I/O modules available.
- Most I/O guaranteed for life.

For more information, visit [www.opto22.com](http://www.opto22.com)

**OPTO 22**  
Your Edge in Automation.™

## SNAP PAC CONTROLLERS

Programmable Automation Controllers	R-Series	S-Series	SoftPAC
Mounting	On-the-rack	Standalone	
Maximum PAC Control™ flowcharts running simultaneously	16	32	64
Wired Ethernet interfaces (10/100 Mbps)	2	2	a
Wireless Ethernet interfaces (802.11a/b/g) <sup>b</sup>	1	1	a
Serial ports	1 RS-232	Up to 4 RS-232 or RS-485	c
Controller Redundancy		●	
<b>Memory (megabytes):</b>			
Total RAM	32 MB	128 MB	a
Battery-backed RAM	2 MB	8 MB	8 MB
Flash memory	8 MB	16 MB	c
Removable storage	32 GB	32 GB	a
<b>Host communications:</b>			
Runs on PC			●
Ethernet (10/100 Mbps)	●	●	
Serial using PPP and modem	●	●	
<b>I/O communications:</b>			
Ethernet (10/100 Mbps)	●	●	●
Wireless Ethernet (802.11a/b/g) <sup>b</sup>	●	●	a
Serial (RS-485) <sup>d</sup>		●	c
On-board	●		
<b>I/O unit compatibility:</b>			
SNAP PAC Brains	●	●	●
Ethernet Optomux®	●	●	
<i>mistic</i> ™ bricks <sup>d</sup>		●	
<b>Protocols supported:</b>			
Modbus®/TCP, EtherNet/IP™, TCP/IP, SNMP, SMTP, PPP, FTP, HTTP/HTTPS	●	●	c

<sup>a</sup>As provided by the Microsoft® Windows® PC SoftPAC runs on

<sup>b</sup>Wired+Wireless™ models only <sup>c</sup>See data sheet

<sup>d</sup>Requires PAC Project Professional

## PAC PROJECT SOFTWARE SUITE

PAC Project Basic vs. Professional	Basic	Pro
<b>Control software features:</b>		
Flowchart and OptoScript programming	●	●
Subroutines	●	●
Graphical debugger	●	●
PID loop tuning	●	●
OptoControl™ strategy import		●
Support for <i>mistic</i> I/O bricks*		●
<b>HMI software features:</b>		
Alarming	●	●
Real-time and historical trending	●	●
Operator access control and logging	●	●
Data encryption	●	●
3000+ graphic library	●	●
Communication with legacy controllers via Ethernet		●
OptoDisplay™ project import		●
<b>Enterprise integration:</b>		
OptoOPCServer™ for OPC 2.0 clients		●
OptoDataLink™: SQL, Access, MySQL database connectivity		●
<b>Support for Ethernet link redundancy:</b>		
Primary and secondary IP addressing		●
Primary and secondary scanners		●

\*Requires SNAP PAC S-series controller

## OPTO 22

43044 Business Park Drive, Temecula, California, 92590-3614 U.S.A.  
 Local: 951-695-3000 Toll-free: 800-321-6786  
 www.opto22.com or www.groov.com



All trademarks, trade names, logos, and service marks belong to their respective companies.