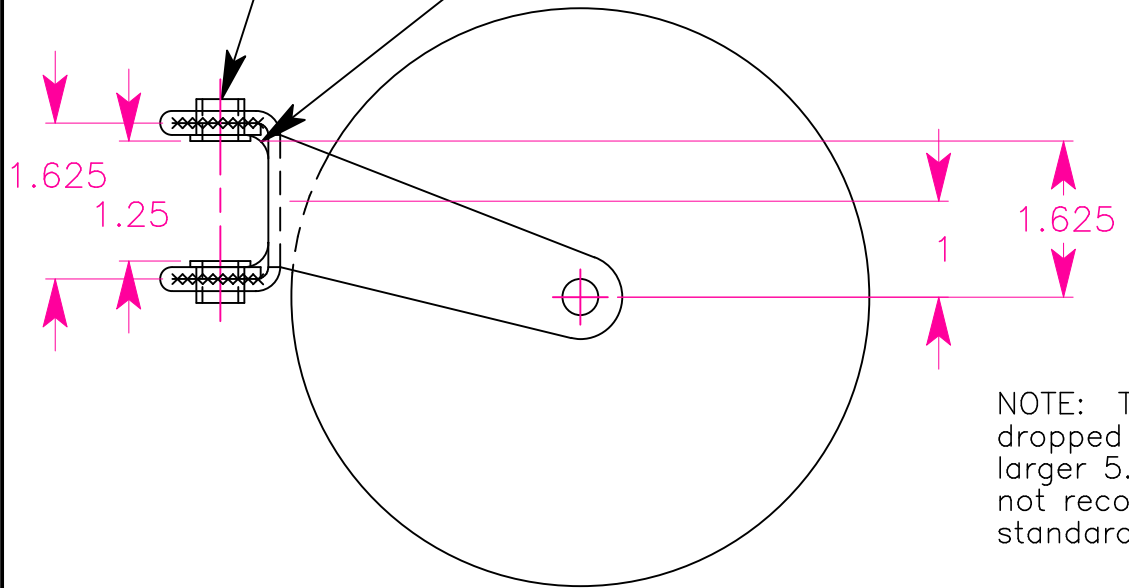
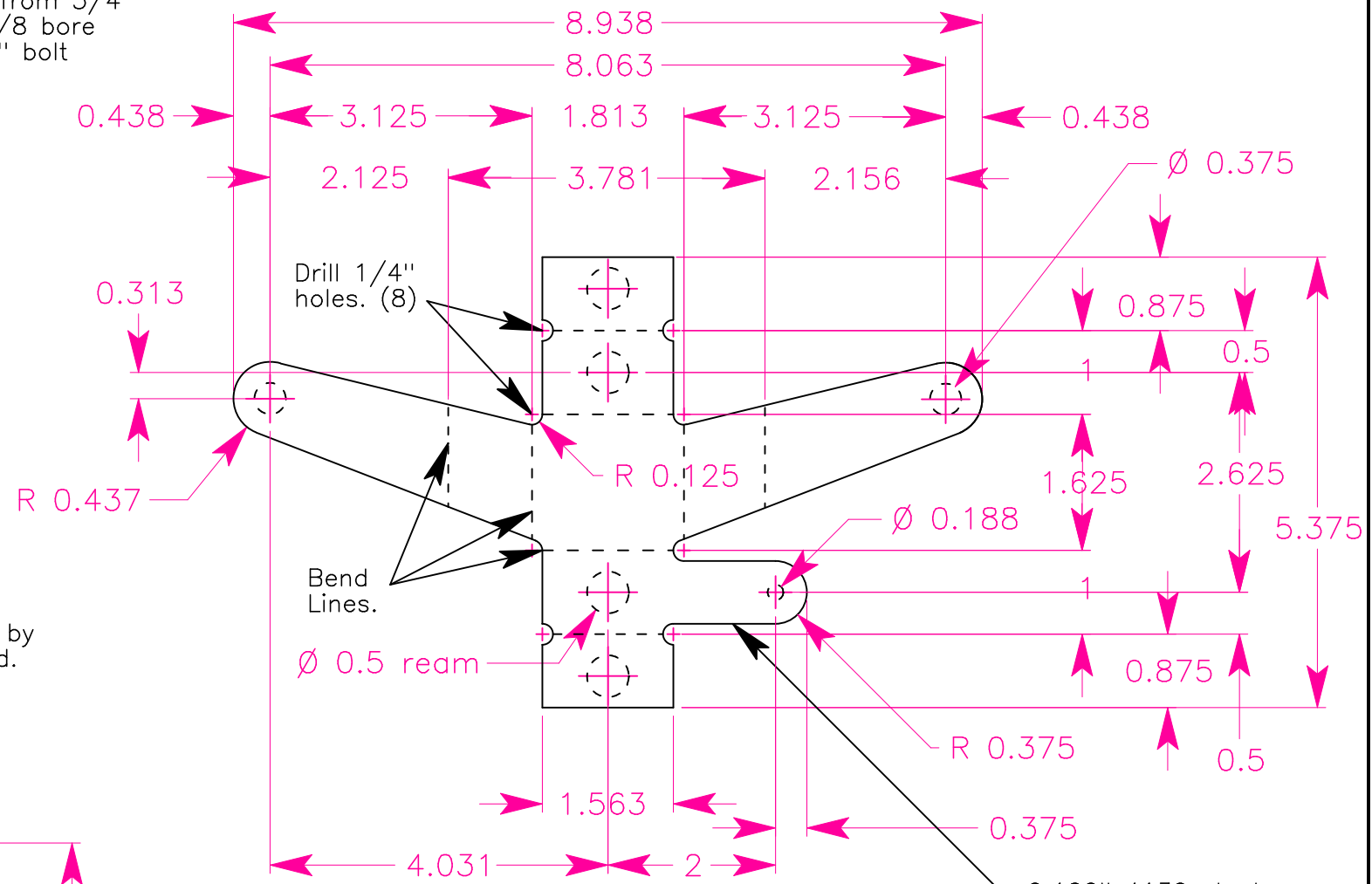


FF520-10 Oilite bushing 3/8" ID x 1/2" OD, 3/8" Lg. 5/8" flg 1/16" thick.

Note: Corners re-enforced by building up with welding rod.



NOTE: This large diameter tail wheel and its dropped bracket were used with the optional larger 5.00 x 5" tires on main gear. I would not recomend their use with the smaller standard tires.



Note: Locate and Drill all holes AFTER forming and welding. Use heat for bends 90 degrees and greater.

Bracket for 6" diameter Tail Wheel.
Sonex #1327
June 19, 2013