



The best under the sun.
Create the most alluring shade in the world.

Designer Awnings for Patio and Balcony

markilux®
The best under the sun



The full details
can be found at markilux.com

The sun smiles down on an awning. Life smiles on you under a markilux.

Outdoor living

Hours of relaxation and recuperation or valuable time well spent with your family and friends – these are the precious moments in which you cherish your outdoor lifestyle. Designer awnings from markilux not only provide shade, they open up new opportunities for enjoying life. They provide protection on hot days and make for a cozy ambience long after the sun has set. In choosing a markilux designer awning, you are opting for the very best quality “Made in Germany” – and for endless hours of light-hearted fun outdoors.

markilux designer awnings have received a multitude of awards:



reddot winner 2023

Reduced to the essence: Free. Time.

Premium quality made in Germany.

For over 50 years, markilux has been developing and manufacturing top-quality solar protection solutions. markilux designer awnings are characterized by their first-rate, multi-award-winning design and innovative technology. The production of awning and cover under one roof is the essence of what markilux “Made in Germany” represents, with the aim of making an al fresco lifestyle comfortable, convenient and enjoyable. With markilux, you can turn your favorite spot outdoors into something extra special. **The best under the sun. Create the most alluring shade in the world.**



markilux quality

The best possible materials and a comprehensive quality management system ensure that every markilux designer awning has a long service life. As a company, markilux is certified in accordance with EN ISO 9001 standards.



markilux functionality

markilux combines innovative technologies and smart solutions to create high-end products. A multitude of accessories and operating options make it possible to individualize your markilux designer awning in line with your own personal wishes.





markilux®

markilux service

The combination of a brand product, expert advice and professional installation makes your solution perfect. Qualified markilux specialist dealers provide a comprehensive service and a personal point of contact in your area.



markilux design

It is the perfect combination of form and function that turns an awning into a markilux designer awning. In this respect, markilux relies on its long-standing experience in R&D and design.

Designer awnings from markilux. Individuality right down the line.

Your model from 1 million configuration options

You can make your markilux designer awning as unique as you are. With a choice of more than 40 models, over 200 timeless cover patterns and a wide range of accessories, you can design an awning to suit your every need.

With lighting modules, smart control technology and other additional functions, markilux awnings can enhance your outdoor experience at any time of day – or night.

Your markilux specialist dealer will gladly assist you with professional advice and suggestions when helping you configure your very own designer awning.



Technical overview from page 86

Model

Perfect Design. Perfect function.

Every markilux designer awning combines design, quality and technology into one unique solution. Within our large range of models, there is bound to be one that fulfills your wishes in terms of functionality and matches the ambience of your patio perfectly.

From page 8

+ Awning cover

A large range of colors and patterns

Our textile designers identify current trends in interior design, architecture and color preference, and turn them into unique awning covers. With more than 200 patterns to choose from, markilux offers you an unparalleled selection.

From page 66

+ Specification

Awning color, operation and options

Modern colors, easy-to-use operating technology, optional lighting solutions and additional extras leave nothing to be desired and make being outdoors a pleasure even when the sun isn't shining.

From page 72

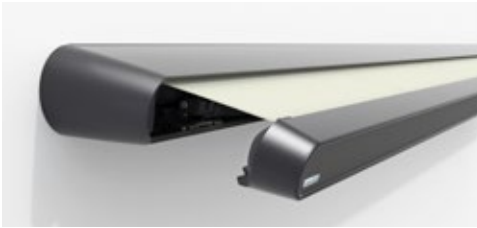


Awning configurator and markilux AR App

Configure your own dream awning with the awning configurator at markilux.com or live on your house with the free **markilux AR App**.



A perfect outlook. Everything in view.



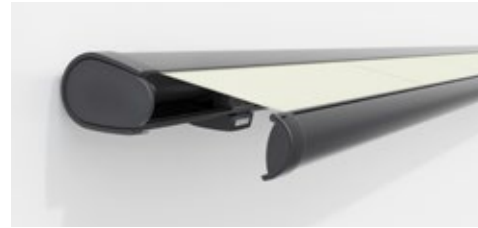
MX_1 compact

Page 14



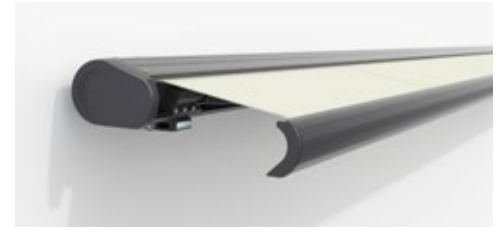
MX_3

Page 20



MX_6000

Page 28



MX_5010

Page 30



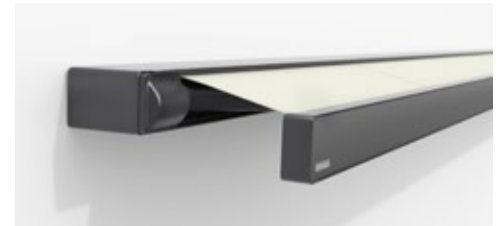
MX_2

Page 16



MX_4

Page 22



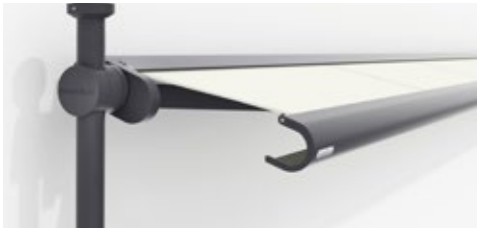
MX_970

Page 32



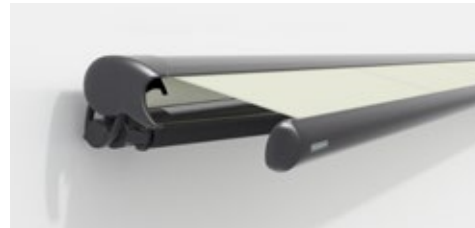
MX_990

Page 34



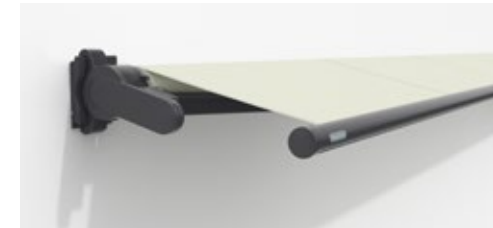
MX_900

Page 36



MX_1600

Page 42



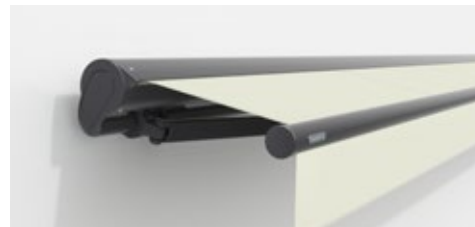
MX_930

Page 46



MX_3300

Page 38



MX_1710

Page 44



MX_1300

Page 48

Cassette Awnings

When the awning is retracted, the cassette encompasses the awning cover and technology, and thus provides protection from wind and weather.

Semi-cassette and Open Style Awnings

Part or all of the cover and technology is not protected. Perfect, particularly for use on patios and balconies not exposed to the weather.

Fantastic ambience. An overview.



MX pergola stretch

Page 52



MX pergola style

Page 54



MX pergola classic

Page 58



MX pergola cubic

Page 60

Pergola Awnings

Large-format sun and weather protection resistant to wind.
The cover is extended via lateral guide tracks.

markilux Awning Configurator



mx_pergola compact

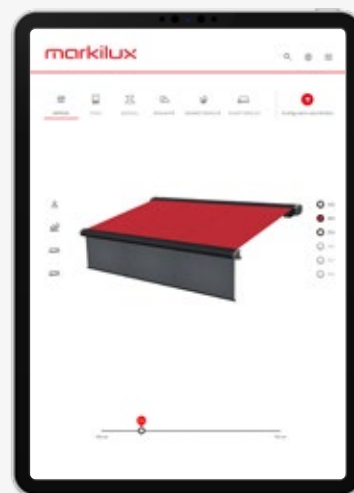
Page 62

Good to know

Awning covers..... Page 66

Awning colors, operation, options..... Page 72

Technical data..... Page 86



Create the most alluring shade in the world

Configure your markilux designer awning including cover and optional accessories at markilux.com or visualize your dream awning live on the wall of your own home using the free markilux AR App. Your markilux specialist dealer will advise you personally on site, will draw up an offer tailored to your requirements and install the product professionally.




The awning configurator
at markilux.com



markilux 3D App
Free in your App Store





Design is the art
of merging function
with beauty.



Simply large shade:
the overview on markilux.com

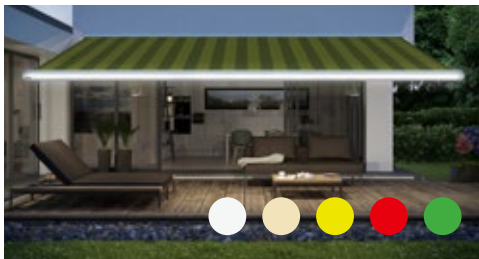


Cassette awnings



LED Line/Spots in the front profile

Gives uniform lighting and a pleasant ambience after sunset.



LED ambient lighting

An impressive eye-catcher in the evening hours. The screen profile is available in five contrasting colors and can be illuminated with dimmable lighting.



A personal statement on any façade

The markilux MX-1 with a cassette depth of 38 cm is an eye-catcher and sun protection in one. The frame and screen profile are available in a range of colors that can be combined freely, see the section Awning colors.

mx_1 compact

Quality has its merits.
Usually the very best ones.

markilux MX-1 compact

Just one look and the markilux MX-1 has already made a big impression by virtue of the way it uniquely combines form and function. Retracted, the tapered full cassette with a depth of 38 cm makes a big impression on the observer. Extended, it shows its true proportions: gleaming LED options in the cassette and front profile, eye-catching ambient lighting as well as a multitude of frame color combinations. Design, “made by markilux”, that has received many an accolade. The markilux MX-1 compact manages to create an incomparable atmosphere at any time of the day or night, that will not cease to raise your heartbeat – now and in the future.



Cassette awning

max. 700 × 415 cm, cassette depth
approx. 38 cm

Lateral arm technology

Bionic tendon

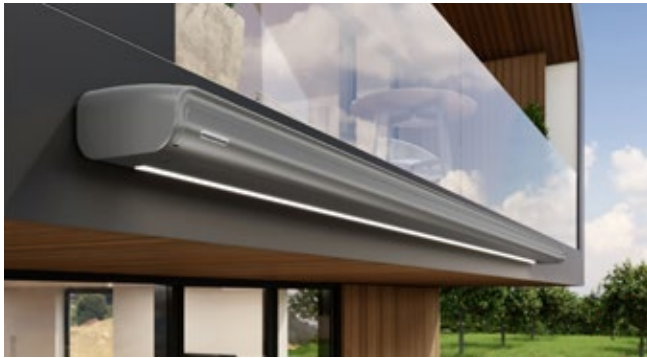
Options

LED Line/LED Spots in the front profile,
LED ambient lighting,
LED Spots in the cassette,
color combinations,
shadeplus,
valance

markilux shadeplus

At just the touch of a button, the optional protection from glare
and prying eyes creates an enviable, private room outdoors.





Plain and simple. Envable.

When closed, the markilux MX-2 seems to be all of a piece.
With or without LED lighting. Product design – at its best.



Open to the magic of personalisation

When extended, the markilux MX-2 displays its full potential and wins you over in every respect. Solar protection – state of the art.



Scope for customized change

Every detail has been carefully shaped, anything unnecessary dispensed with.
Uncluttered and restrained – and all the more elegant as a result.

mx_2

Fascinating in form. And function.

markilux MX-2

The essence of flowing design and perfect solar protection technology can be perfectly coordinated with the architecture and the design of the patio. The reduced, organic and harmonious design language seems to have come “from a single mold” and fascinates in every form – and function.



Cassette awning

maximum 600 × 300 cm
maximum 500 × 350 cm

Lateral arm technology

Bionic tendon

Options

LED Line in the cassette,
color combinations

markilux MX-2 color

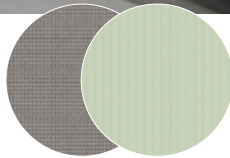
Brilliantly matched and perfectly “covered”: ten fashionably modern color combinations mean individuality and personality, complementing the architecture of the building, can be seen and experienced.





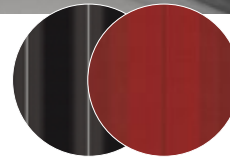
01

Top profile: Traffic white RAL 9016
Frame color: Stone grey metallic 5215
Cover recommendation: 369 65 | 314 11



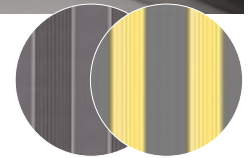
02

Top profile: Anthracite metallic 5204
Frame color: White aluminum RAL 9006
Cover recommendation: 369 24 | 312 04



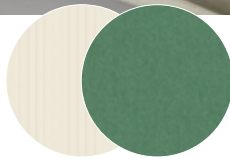
03

Top profile: Anthracite metallic 5204
Frame color: Stone grey metallic 5215
Cover recommendation: 314 67 | 369 81



06

Top profile: Havana brown textured finish 5229
Frame color: Off-white textured finish 5233
Cover recommendation: 314 09 | 411 61



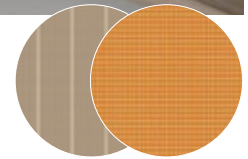
07

Top profile: New champagne metallic 5062
Frame color: Anthracite metallic 5204
Cover recommendation: 302 07 | 369 18



08

Top profile: Off-white textured finish 5233
Frame color: New champagne metallic 5062
Cover recommendation: 369 07 | 369 67

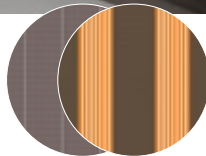


mx_2 Options



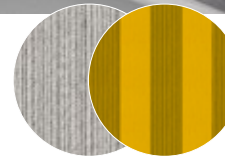
04

Top profile: Off-white textured finish 5233
Frame color: Havana brown textured finish 5229
Cover recommendation: 31404 | 31472



05

Top profile: Anthracite metallic 5204
Frame color: Traffic white RAL 9016
Cover recommendation: 30709 | 30401



© RAL Born 2024

Tuned for color
 from top profile
 to cover.



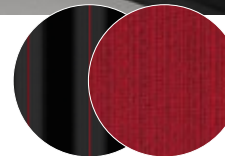
09

Top profile: Concept black 5095*
Frame color: Traffic white RAL 9016
Cover recommendation: 41680 | 31028



10

Top profile: Carmine red 3002
Frame color: Concept black 5095*
Cover recommendation: 36923 | 30703



markilux MX-2 color

Your very own markilux MX-2 can be configured from a total of ten color combinations consisting of top cassette profile and the frame color.

A suitable color for the cover can be selected from two recommendations or – entirely at will, according to your style and taste – from the markilux awning cover collection: collection one.

* RAL 9005 matt

Cassette awning

maximum 600 × 300 cm

maximum 500 × 350 cm

Lateral arm technology

Bionic tendon

Options

LED Line in the cassette,
color combinations



Perfect. All round.

As individual as you prefer – as unique as you like it. The surrounding screen profile is available in trendy colors and can be freely combined with any markilux frame color, see the section Awning colors.

mx_3



The awning with both elegant curves and clean lines.

markilux MX-3

Defined curves, clean lines, a fascinating color spectrum – these are the defining features of the markilux MX-3. The color choice of the all-round styling panel offers a unique customization option and makes the hearts of patio and balcony owners beat faster. When closed, the awning makes a good impression with its harmonious appearance and when open, it fully reveals its technical superiority.



Clean lines. All round.

If you like defined curves in combination with a straightforward design, you will love the markilux MX-3.

The best spot under the sun – even in the evening.

The atmospheric, dimmable LED Line in the cassette skillfully puts your favorite spot in the limelight.

Cassette awning

maximum 700 × 350 cm

maximum 600 × 400 cm

Lateral arm technology

Bionic tendon

Options

colored lighting,

LED Line in the cassette,

LED Spots in the end caps,

LED Spots in the front profile,

external lights,

color combinations,

coupled awning



reddot winner 2023



The interplay of attractive awning design and sophisticated LED technology

Designed to provide shade for large areas during the day and magical moments in the evening.

The markilux MX-4 fulfills the desire for sophisticated outdoor living at any time of day.

mx_4

A captivating composition with an excellent ensemble.

markilux MX-4

Make way for the cassette awning markilux MX-4. Designed to shade large areas, its avant-garde design and all-round screen profile are compelling. Product design – both functional and attractive. With the innovative lighting options and the additional wall lights, it shimmers in the evening and creates spectacular and enchanting lighting effects. Raising the curtain on a great composition.



Clear form. Soft curves.

For contemporary architecture – and people who place a high demand on design, functionality and durability.



Individual options

The all-round screen profile is available in selected colors and underlines – any way you wish – individuality, taste and style.





LED Line in the cassette

Accentuates the design of the awning and creates a fascinating atmosphere.



LED Spots in the front profile

Showcase designated areas selectively and charmingly.



The later the evening, the more beautiful the light.

Innovative LED lighting technology extends both the outdoor living space and the amount of time you can spend outside.

mx_4 Lighting options

Always putting outdoor living in the right light

The markilux MX-4 wall lights are a further highlight – in the truest sense of the word. Coordinated with the design language of the awning, they fit perfectly into the design image and demonstrate al fresco living of a special kind.

The markilux MX-4 designer awning in combination with the wall lights and other lighting options illuminate every outdoor area, completely individually and, if desired, with colored light. They provide the right lighting scenario to suit the occasion and atmosphere.



Magical trio. Light. Shape. Function.

markilux MX-4 wall lights enhance outdoor living with a uniform overall appearance during the day and atmospheric light in the evening. Can be focussed either upwards, downwards or in both directions.



markilux MX-4 wall lights

In good shape – and perfectly coordinated with the awning design.



Cool and clear – and, with an app, all the colors in the world.



Bright and colorful for a memorable party with friends.



Magical worlds full of atmosphere
Outdoor living in a new light. And color.
Explore your options now at
markilux.com

mx_4 Lighting options



Warm and relaxing for those cozy evenings for two.

Gives light and more

markilux designer awnings that create a glowing atmosphere. With the markilux MX-4, things are getting even more spectacular and flexible. The lighting option mx light creates a really individual lighting atmosphere, depending on the occasion and mood.

All colors are easily and infinitely adjustable – also by using the app solutions from e.g. Philips Hue or Somfy TaHoma – and thus present the outdoor area in a cool, colorful or really warm light.

Whatever the color: light works and creates a spectacular ambience.

Cassette awning
max. 700 × 400 cm

Lateral arm technology.
Bionic tendon

Options
LED Spots in the front profile,
end cap insert
in stainless steel mesh,
end cap trim in polished chrome,
shadeplus,
valance,
coupled awning



reddot design award
winner 2006

LED Spots in the front profile

More than a decorative highlight. The markilux 6000 lights up your favorite spot in an elegant, flexible and energy-efficient manner, just the way you want it.



markilux shadeplus

The vertical shading in the front profile adds the finishing touch and provides personal protection from the sun and prying eyes. On request, with a switch-operated/remote-controlled motor.



Variable decorative elements

Whether you choose the end cap insert in stainless steel mesh, the end cap trim and frame in a chrome finish or all deliberately uniform in the awning color of your choice – you can design your very own personalized top model by markilux.

mx_6000



No false modesty: Germany's top model.

markilux 6000

A designer awning with many faces – each one more beautiful than the next. Create your own personal and unique model from a wide range of awning frame colors, decorative features and available accessories.

With its remarkable dimensions and technical specification, the markilux 6000 makes a lasting impression. It also cuts a dashing figure as well. Invite Germany's top model into your home.

Cassette awning
max. 700 × 400 cm

Lateral arm technology
Twin steel-link chain,
optional: Bionic tendon

Options
polished chrome fittings,
shade plus,
valance,
coupled awning



mx_5010

At home in every family. Welcome on every patio.

markilux 5010

The markilux 5010 can be effortlessly extended, either at the touch of a button or via smart control by way of an app, and will be a hit with the family. On top of that, as a coupled unit with up to three awnings installed next to one another, friends and guests will also be able to find a cozy spot in the generous shade this awning offers. The all-rounder encourages relaxed get-togethers and turns any hour spent outdoors into a happy one.



Polished chrome fittings

Optionally available as an eye-catcher: the chrome-plated end caps fitted to the front profile. On request, with a wall sealing profile which drains rain away over the front of the awning.



markilux shadeplus

Enjoy relaxing on the patio even when the sun is low in the sky.

For everyone who loves all-round beauty.

markilux 970

The markilux 970 exudes the urban lifestyle with confidence. Its neat and slim appearance makes it the ideal model for those who love the simplicity of elegance. Lighting elements, numerous options, and the varying screen profile finishes lend that individual something to every markilux 970. All in all – simply because of its clean lines and straightforward design – this awning is an all-round performer.



For those who love a world of color

The colors of the cassette and front screen profile can be mixed and matched at will. There are further accentuated, contrasting colors available for the screen profile, see the section Awning colors.



markilux shadeplus

For more protection from prying eyes and the glare of the sun, the optional vertical blind in the front profile is bound to impress.



In the evening. In the best possible light.

The dimmable LED Line in the cassette makes for a stylish ambience during the course of the evening.



mx_970



Cassette awning

maximum 600 × 300 cm
maximum 500 × 350 cm

Lateral arm technology

Bionic tendon

Options

LED Line in the cassette,
color combinations,
shadeplus



Creates a carefree ambience.

markilux 990

Small, but impressive! You will be surprised how much technological sophistication there is to be found in this 124 mm high cassette. The folding arms and awning cover disappear into the compactly constructed cassette with U-shaped front profile. An impressive angle of pitch of up to 70 degrees when top fixing makes this awning suit smaller patios and balconies particularly well. Thanks to these advantages you can enjoy many hours relaxing in the most beautiful shade.



End cap insert in polished chrome

That certain something for your markilux 990.



Wall sealing profile

The slim aluminum profile in the same color as the awning closes the gap between the awning and the wall, allowing rain to be discreetly drained off via the awning.



mx_990



Cassette awning
max. 500 × 300 cm

Lateral arm technology
Twin steel-link chain,
optional: Bionic tendon

Options
end cap insert in polished chrome,
valance



Appealing design

The markilux 900 was specially developed for those small outdoor paradises – city balconies. It shows itself to be of premium caliber and the very best in markilux product quality.



Discreetly attached to the ceiling

If desired, the markilux 900 is also available with brackets so it can be fitted to the under-side of a balcony.



The balcony awning with the most attractive prospects

Choose the frame color from one of the standard colors traffic white RAL 9016, stone grey metallic 5215 and anthracite metallic 5204 or optionally a RAL color of your choice.



reddot winner 2024
best of the best

mx_900

Best option for challenging balconies.

markilux 900

Designed for city balconies – practical, functional, versatile – ideal for apartments. The lateral folding arm technology in combination with the individually set pitch of the awning allows a clearer view outside. It ensures optimum solar protection, reduces the heat on the balcony and in so doing also improves the climate in neighboring rooms. markilux 900 – the world's first designer wedge-in awning with premium markilux lateral folding arm technology: best option for challenging balconies.



Pleasant shading with a clear view outside

The pitch of the markilux 900 can be selected, depending on the balcony orientation and your preferences, between 5 – 70°.



Cassette awning
max. 400 × 200 cm

Lateral arm technology
Bionic tendon

Options
top fixture

Solid. Attractive. Secure.

The two clamp-in posts securely fix the awning between balcony floor and ceiling. They enable the simple and clear installation of the awning – and offer the necessary flexibility in case of a move.



Cassette awning
max. 700 × 400 cm

Lateral arm technology
Bionic tendon

Options
valance,
coupled awning



mx_3300



Angular design

The markilux 3300 blends in perfectly with the architectural ambience thanks to precise niche installation on the ceiling or wall.

High impact.
Low maintenance.

markilux 3300

If you are convinced that an awning cannot be visually merged into its architectural surroundings, the markilux 3300 will prove you wrong. Depending on the structural situation, this designer awning, with its smooth front profile, can disappear completely into a wall or precisely into a recess. When extended, it comes into its own with dimensions of up to 700 × 400 cm. And you can shade even larger areas by coupling up to three single awnings together. Discover how practical the markilux 3300 can be, and make this awning a big hit in your home.

Good technology
is about putting effort
into saving effort.



Everything under wraps.
And clearly presented at markilux.com

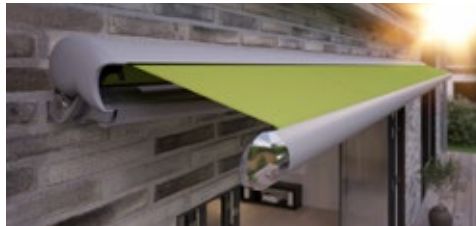


Semi-cassette and open style folding-arm awning

One of the most beautiful. Far and wide.

markilux 1600

This awning won the IF product design award for its harmonious, semi-circular design. And it looks unique when it's fully extended, too. As a semi-cassette awning, the markilux 1600 is open underneath. The top cover profile adapts itself to the angle of pitch of the awning and closes completely flush with the front profile when retracted, which protects the cover safely from rain. Take a look around your neighborhood: your awning is probably the most beautiful far and wide.



Polished chrome fittings

Underline the visual impact of your markilux 1600 in spectacular fashion – fitted to the front profile and torque bar.



markilux shadeplus

The additional blind cover in the front profile of the markilux 1600 makes it possible to shut out low-lying sun and prying eyes.



mx_1600



Semi-cassette awning
max. 710 × 400 cm

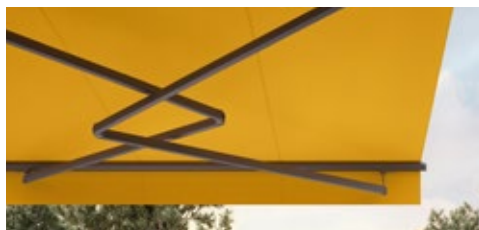
Lateral arm technology
Twin steel-link chain,
optional: Bionic tendon

Options
LED Line in the folding arms,
end caps in polished chrome,
shadeplus,
valance,
coupled awning,
stretch



Lighting options

The LED Line in the folding arms guarantees evenings with plenty of atmosphere.



markilux 1710 stretch

Gives an impressive performance on narrow patios, balconies and in recesses: thanks to the two crossover arms even awnings with a narrow width are able to extend considerably further.



Polished chrome fittings

Side caps matching the awning color or deliberately emphasized in a finely polished chrome finish. This awning can simply wear anything.



More cover without a cover cassette

Also available without a cover cassette, the model variant markilux 1700 can be extended up to 400 cm to provide even more shade.



Valance

The narrow piece of cover fabric on the front profile gives the awning a classic look and conceals the folding arm technology when the awning is retracted.

mx_1710

Great performance. Beautiful details.

markilux 1710

The markilux 1710 is a contemporary interpretation of the classic awning shape. The conspicuously round torque bar merges organically with the round cassette to form an elegant design feature. Due to its shape, the optional LED lighting in the folding arms and the timelessly beautiful decorative features made from polished chrome, the markilux 1710 will suit almost any patio.



Cover cassette awning

maximum 700 × 350 cm (mx 1710)

Open style folding-arm awning

maximum 700 × 400 cm (mx 1700)

Lateral arm technology

Bionic tendon

Options

LED Line in the folding arms,
polished chrome fittings,
coupled awning,
stretch

LED Lines in the folding arms

Turn night into day. Make your al fresco lifestyle more comfortable and pleasant.



German
Design Award
NOMINEE 2014



reddot design award
winner 2012

Open style folding-arm awning
max. 500 × 300 cm

Lateral arm technology
Twin steel-link chains



reddot design award
honourable mention 2009



Valance

This additional decorative finish to the front profile lends this open style folding-arm individual charm.

mx_930

Angling for perfection. Moving. Different.

markilux 930

This awning moves differently from the rest. When extended, the angle of pitch can be set at up to 80°, the markilux 930 can pivot almost to the vertical. When retracted, the awning straightens to a horizontal position and disappears discreetly under the soffit when retracted. The mobile markilux 930 is perfect for all balconies and eaves that require no additional protection of the awning cover or technology. Your new shading device bows to the sun – allowing you to enjoy being outside in the evening even when the sun is low in the sky.



Pivoting mechanism

The just 122 mm high awning frame disappears discreetly under the soffit when retracted. Only when it starts to extend does the markilux 930 pivot into its preset pitch.



Aluminum coverboard

Protects the cover from dirt and moisture.



Pitch adjustment gear

The desired awning pitch is convenient to set, infinitely adjustable using a winding handle.



Valance

This decorative piece of fabric conceals and protects the folding arm technology when the awning is retracted.



Select one of the two standard frame colors: traffic white RAL 9016 and metallic aluminum RAL 9006 or, at a surcharge, a RAL color of your choice.

mx_1300

Beautiful. Simple.

markilux 1300

Robust, reliable and fulfills all the expectations of a good awning. With the optional pitch adjustment gear, you yourself can determine the angle at which your awning cover protects you and your loved ones from the sun. And, if desired: a shadeplus, the versatile cover attached to the front profile to protect you from the low-lying sun and prying eyes. Beautiful simplicity! And such perfect sun protection.



Open style folding-arm awning
max. 700 × 400 cm

Lateral arm technology
Twin steel-link chains

Options
LED Line in the folding arms, shadeplus, pitch adjustment gear, aluminum coverboard, coupled awning

LED Line in the folding arms and shadeplus

The culmination of a wonderful day and a lovely evening outside on the patio or balcony with friends and family.

A family with the best standing.
Pergola DNA inside.



Outdoor areas become favorite spots.
Find your solar protection solution at markilux.com

markilux®



Pergola awnings



Slender appearance

Design reduced to the essence.
The cover safely tucked away.



Well thought through

Water drainage from the cover via the integral gutter and support posts is assured from a very low pitch of only 5°.



Attractive protection majestically full of fresh air

A water resistant awning cover leaves you perfectly prepared for a comfortable and relaxed season – al fresco. Allow your markilux specialist dealer to give you professional advice.

mx_ pergola stretch

Many. Fold. Superbly in shape.

markilux pergola stretch

The markilux pergola stretch offers an impressive take on sun and wet weather protection. The cover is perfectly integrated into the minimalist design of this high-value pergola awning. The rhythmical, space-saving cover folding technology makes it possible to shade large areas and creates a special and impressive atmosphere. The abundance of optional extras means that the markilux pergola stretch can show itself from its most attractive side.



Pergola awning
max. 700 × 700 cm

Options

LED Line in guide tracks,
LED Line or LED Spots
attached to the crossbar,
vertical cassette blinds,
lateral wind and privacy protection,
coupled unit



Truly immense and with impressive prospects

Versatile implementation in varying weather conditions. The LED lighting and lateral protection options allow the atmosphere to be adapted as the situation requires.

Pergola awning

maximum 600 × 500 cm

maximum 500 × 600 cm

Options

colored lighting,
LED Line in guide tracks,
LED Line in cassette,
LED Line in posts,
LED Line/LED Uplights
in footplate covers,
shadeplus,
lateral wind and privacy
protection,
telescopic posts,
ballast boxes,
coupled unit



reddot winner 2024

Big in shade solar protection for those big moments in life

Would you like to shade wide patios perfectly in a stylish manner? Several pergola awnings coupled together provide plenty of protection and enjoyment whatever the occasion.

Minimalism in mind. Simply big in shade.

Heart-warming. Cool.

The pergola awning for lovers of clean lines and straightforward elegance with plenty of convenience. The resolutely angular design of the pergola style is in very clear focus, lending, as it does, this solar protection system a sense of modern lightness. The purist design presents itself in its best light in the evening. The perfectly integrated LED lighting transforms the patio area into the individual lighting mood you desire. Resolute, heart-warming, cool – by day and night: the markilux pergola style.



markilux shadeplus

The vertical sun shading is perfectly integrated into the drop profile and can be retracted and extended manually or solar-powered by remote control/app as required.



Awning cover beautifully protected

The slim-line full cassette with a minimalistic design, 205 × 160 mm, offers maximum protection for the awning cover.

mx_pergola style Lighting options



“Cool evening ambience” for an unforgettable al fresco experience.



“Welcome to Miami” and we’re ready for the next party.



“Caribbean feeling” for that short holiday on the patio.



Outdoor living 24/7

Cool for hot nights

The new markilux pergola style is a feast for the eyes even in daylight. When illuminated, the pergola is transformed into a truly brightly lit accessory, underlining its purist design and bathing the patio in your very own feel-good atmosphere. Each lighting scenario can be configured easily and individually with the app. But beware! You may find that your evenings end up lasting a little longer than you had anticipated. markilux pergola style: outdoor living 24/7.



Magical worlds full of atmosphere
Outdoor living in a new light. And color.
Explore your options now at markilux.com

Smart LED lighting options

Configure the LED Line in the cassette and in the guide rails, in the posts and their footplate covers as well as LED Uplights in the footplate covers individually and simply control them via the app. Lighting options in the support post area are only available with rigid post design.

Pergola awning

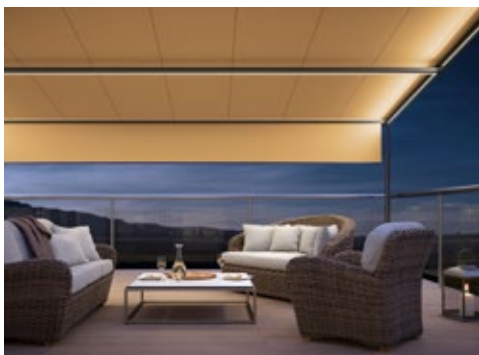
maximum 600 × 450 cm

maximum 500 × 600 cm



Options

LED Line on guide tracks,
LED Line or LED Spots
on the cover support tube,
shadeplus,
lateral wind and privacy protection,
posts round / angular,
telescopic posts,
cover support tube,
ballast boxes,
coupled unit



You have the choice

Discover the range of options under “Options”
at the end of the section and at your markilux
specialist dealer's.



markilux shadeplus

The additional vertical blind integrated in the front profile simply
blocks out low-lying sun and the glances of inquisitive neighbors.

Coupled pergola awnings

For all those who want even more shade: up to five
single pergola awnings can be joined side by side.

For all those, who have grand plans even if it is windy and wet.

markilux pergola classic

When it comes to solar and weather protection, the markilux pergola classic is a great choice. The pergola awning on slender posts and with lateral guide tracks provides generous shading with an extension of up to 6 meters. At the same time, the round markilux pergola classic defies wind and weather up to wind force 6 (wind resistance class 3). You have every opportunity to make your favorite outdoor place your very own with markilux shadeplus as well as with a multitude of lighting options and different post shapes. No matter how strong the sun shines or the wind blows, with your markilux pergola classic you can enjoy life outdoors at any time.



Fantastic views even in bad weather

When the pergola awning is retracted, there is no glass roof construction obscuring the sky and the free view to the outside is retained.



Closed full cassette system

The cover disappears completely inside the round cassette, Ø 187 mm, and is ideally protected. The only thing that is more impressive than the look itself is the fact that the technology works perfectly.



markilux tracfix

One of many markilux refinements: the lateral cover guidance system that leaves no gap between the cover and the guide track. Gives an overall better appearance and improves wind stability.

Pergola awning

maximum 600 × 450 cm

maximum 500 × 600 cm

Options

LED Line in the cassette
and on guide tracks,
LED Line or LED Spots
on the cover support tube,
shadeplus,
lateral wind and privacy protection,
posts round / angular,
telescopic posts,
cover support tube,
ballast boxes,
coupled unit



Wonderful, functional and reliable

Regardless of whatever style you prefer – in the personal combination of awning cover and technology you are bound to find precisely the markilux pergola cubic that fulfills your requirements perfectly.

mx pergola cubic

Essentially square.
Practically superb.

markilux pergola cubic

The design of the new markilux pergola cubic was developed entirely in the spirit of the Dessau Bauhaus philosophy. Functional, clear and timeless contouring on the basis of cubist simplification. In addition to the proven solar protection benefits offered by the pergola, this model integrates itself harmoniously and impressively into today's modern architecture and makes a big impression – not only with its high-quality workmanship.



Reduced design language

The angular cassette, 200 × 160 mm, offers room for large-scale solar protection up to 600 × 450 cm or 500 × 600 cm, and as coupled unit a whole lot more.



markilux shadeplus

More shade and protection – even when the sun is low in the sky. Optionally solar driven using markilux sundrive.

The pinnacle of quality and convenience

Extras for more shade, light and warmth – discover all the ways you can personalize your awning in the showroom of your markilux specialist dealer and at [markilux.com](https://www.markilux.com)



markilux shadeplus

Blocks out glare from the sun and prying eyes in an instant.



An “all-round” achievement

The square, compact cassette, 125 x 125 mm, protects the awning cover all round.



reddot design award
winner 2017



mx pergola compact

Dependable. Anywhere. For anyone.

markilux pergola compact

The pergola compact unites the graceful shape of the classic pergola with the latest in product design and the most advanced technology. The compact, space-saving awning system on slender support posts is ideal for smaller patios. The lateral guide tracks with markilux tracfix always keep the cover taut. The markilux pergola compact invites you to lounge and take it easy. Attractive and functional solar protection. Anywhere. For anyone.



Pergola awning
max. 450 × 400 cm

Options

LED Line in the cassette and on the guide tracks,
LED Line or LED Spots on the cover support tube,
shadeplus (manual),
lateral wind and privacy protection,
posts round / angular,
telescopic posts,
cover support tube,
ballast boxes

Always in the best light

Highlights with LED Line in the cassette, on the guide tracks and/or in the cover support tube guarantee endless hours of pleasure outdoors – even long after the sun has set.



LED Line

Light for reading or socialising, optionally on the guide rails and/or in the cover support tube, dimmable. For pergola style/cubic/compact also available in the cassette.



Telescopic posts

For better water drainage, the posts can be lowered between 20 and 40 cm. On request with a motor. Cannot be combined with lighting in the posts and footplate covers in pergola style.



markilux sundrive

An integrated solar module can drive the shadeplus motor. When the awning is extended, the front profile and the guide tracks blend into one another.



LED Spots attached to the light bar

The spotlights provide perfect contrast lighting in the evening hours. The lights can also be pivoted and dimmed, of course!



Ballast boxes

Give your markilux pergola reliable stability when securing the front posts in the foundations is not possible or desired.



Stainless steel crank

Bring the adjustable posts to the desired height in no time at all.



Lateral wind and privacy protection

For protection from wind, weather and prying eyes, markilux offers you versatile textile solutions. We would be happy to advise you!



markilux shadeplus

The vertical protection against sun and prying eyes – up to 230 cm in height – creates a private room outdoors with its own special ambience.

Exquisite fabrics
in the most beautiful
of shades.



The most beautiful fabric between heaven and earth
discover yours with the markilux awning fabric finder.

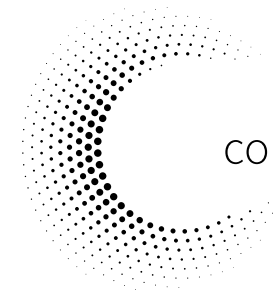


Awning cover fabrics



markilux collection one – One collection, endless ideas.

Choose your own favorite pattern from a number of different color families. When making your selection allow yourself to be inspired, enthused and advised by a markilux specialist dealer near you ...



collection **one**

The most beautiful fabric between heaven and earth.

Our unique covers help to create a special ambience

The color and quality of the awning fabric are what help make the ambience of your patio something special. Color nuances, patterns and textures succeed in creating that uniquely special effect by virtue of their brightness and hue. As a leading manufacturer of high-grade awning fabrics with 50 years of experience in manufacturing textiles, markilux offers an unparalleled variety. The markilux textile design team is constantly developing new patterns in line with the latest trends, which are nevertheless characterized by their timeless appeal. Among the more than 200 patterns in thematically coordinated color families, you are bound to find your very own and most beautiful fabric between heaven and earth.



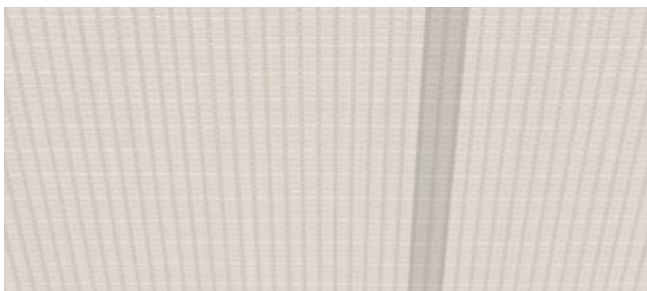
markilux AR App and Awning Cover Finder

markilux awning fabrics are designed, manufactured and tested in the markilux facility in Germany. Find your own personal favorite amongst the more than 200 cover patterns in the showroom of your markilux specialist dealer, by using the markilux AR App or with the **Awning Cover Finder at [markilux.com](https://www.markilux.com)**



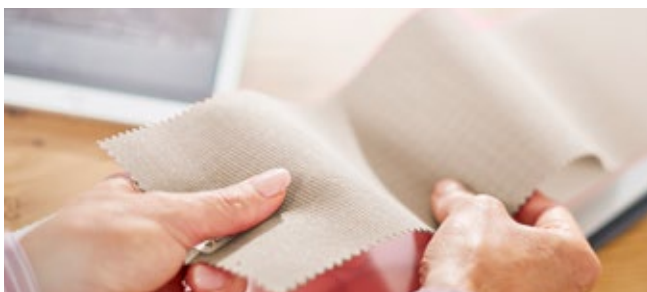
Self-cleaning effect

Water droplets pick up dirt particles and run off the awning cover taking the dirt with them (the awning must be set at a pitch of at least 14°), ensuring you can enjoy your beautiful fabric for a long time to come.



Bonded awning covers

Panel joints bonded together ultrasonically ensure a consistent, unobtrusive appearance. Their excellent resistance to water, light and fluctuations in temperature ensures that the service life of the cover is extended substantially.



Light and weather resistance and resistance to fading

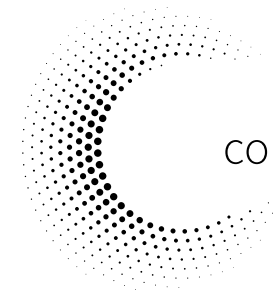
High-tech yarns dyed right to the core and the high-grade snc finish developed in house guarantee the most stunning shade in which to relax.



**STANDARD
100**

A96-0071
Hohenstein HTTI

Detailed information about the typical properties of awning fabrics is available from your markilux specialist dealer and in the current markilux awning fabric brochure.



collection **one**



markilux awning covers. Quality – Made in Germany.

Functionality can be so beautiful

markilux leaves nothing to chance when it comes to making awning covers. We add a final finishing flourish to the fabric qualities sunsilk and sunvas with a special formula developed in house. This gives these awning covers particularly high longevity and the necessary resistance to dirt and the weather.

markilux awning covers made of sunsilk, sunvas and acrylic usually offer the highest possible UV protection for textiles with UPF 50+. This means that your skin's own system of protection is enhanced by a factor of more than 50. This allows you to enjoy sunny days for longer, without putting your health at risk.

Certified in accordance with Oeko-Tex standard 100, all markilux awning covers are guaranteed free from harmful dyes and chemicals.



Beauty lies not in size,
but in attention to detail.

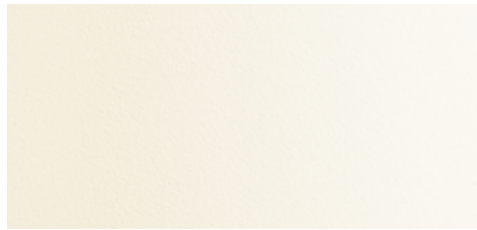


Awning color, operation and options



Traffic white

RAL 9016



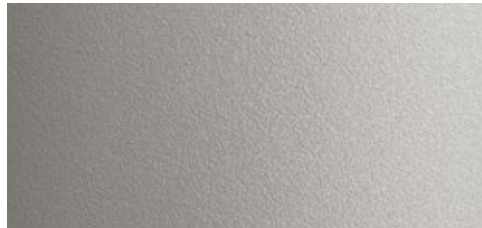
Off-white textured finish

5233



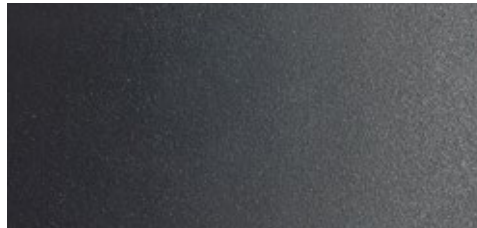
Metallic aluminum

RAL 9006



Stone gray metallic

5215



Anthracite metallic

5204



Grey brown

similar to RAL 8019



Havana brown textured finish

5229



RAL color of your choice

© RAL Bonn 2024





Sounds perfect. Tone in tone.

markilux awning colors

The awning frame color complements and enhances the color of the fabric and creates a perfect link to the architectural surroundings. From a variety of shades of white through to the timelessly elegant anthracite, a broad range of colors is available to you. And if you want to create your own particular color scheme? No problem! We will gladly manufacture your dream awning in your own personal shade.

Our high-grade powder coating finish is guaranteed for any awning color you choose.

Matching every architectural style and customer demand

All markilux awning colors are available without a surcharge.*

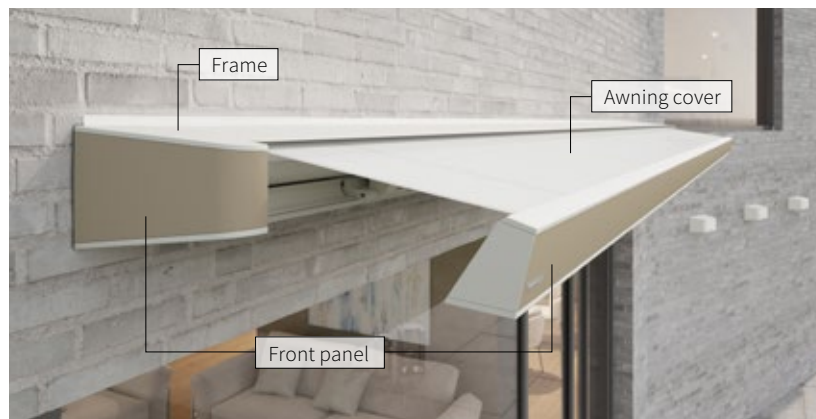
We would be happy to produce non-standard RAL colors on request.

* markilux 1300 only traffic white RAL 9016 and metallic aluminum RAL 9006
markilux 900 only traffic white RAL 9016, stone grey metallic 5215 and anthracite metallic 5204

A trio becomes one. Individuality. With a strategy

markilux front panel colors

The color combination of a designer awning – consisting of frame color, awning cover and front panel color – has a major influence on the visual appearance and impact of the selected awnings. This trio of colors is in harmony with the clean lines and functional design of these designer awnings. From classically chic to fashionably elegant, there are many ways you can customize the awning of your dreams.



Color is an expression of personality

The markilux front panel colors with a matte finish turn each of our four top models into completely personalized dream awnings and make a clear design statement that informs contemporary outdoor living.

markilux frame colors (standard) can also be used as front panel colors.



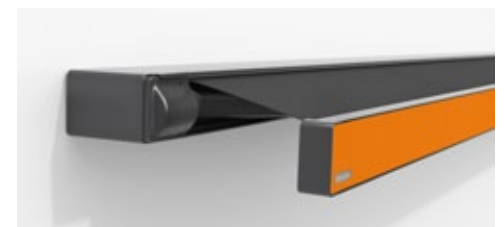
markilux MX-1 compact



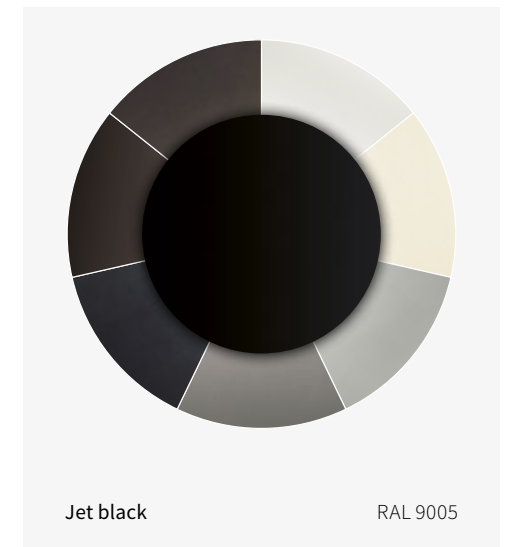
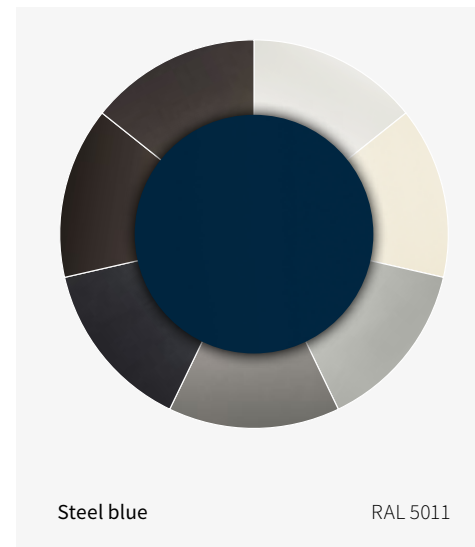
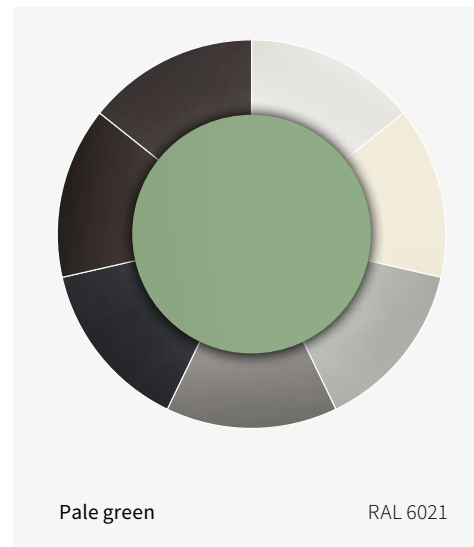
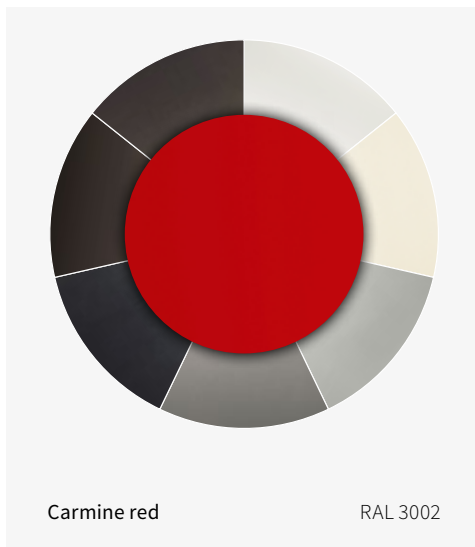
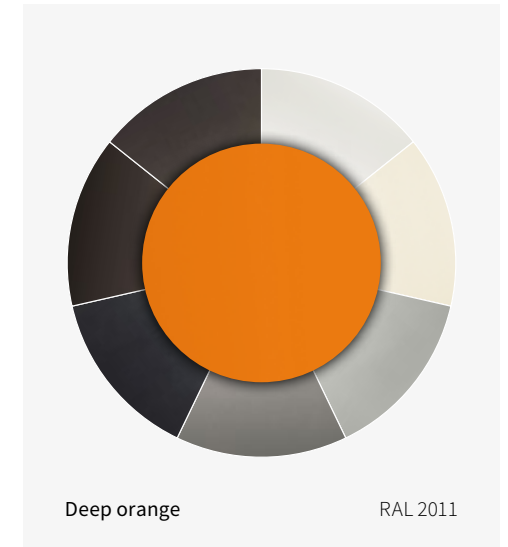
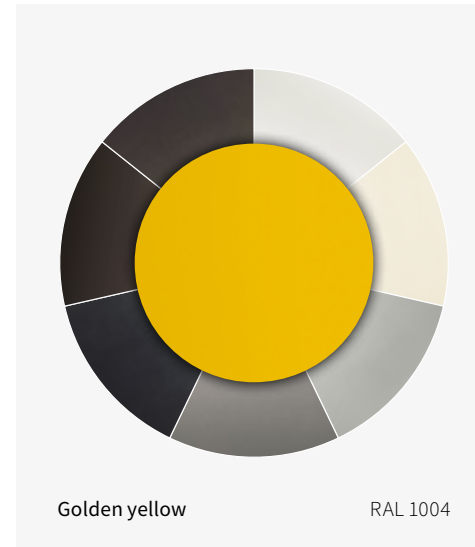
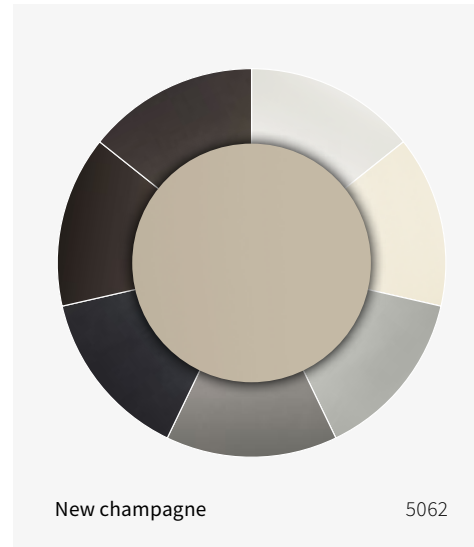
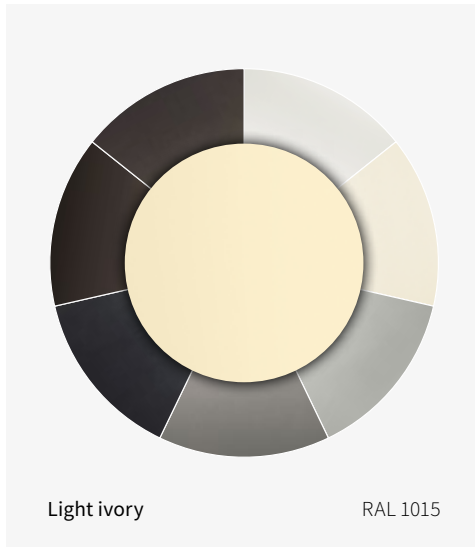
markilux MX-3



markilux MX-4



markilux 970



Make it easy on yourself. And comfortable.

markilux ease of operation

Fullfills the highest expectations and can be used in any weather conditions. The choice is yours: manual operation (optionally spring assisted), switch-operated motor or remote controlled wired radio-controlled are all possible on most models. And if you wish, light, wind and rain sensors will control your markilux designer awning according to the prevailing weather conditions. Alternatively, you simply operate it at home yourself and this can even be done when you're out and about via your smart-phone or tablet.

Your markilux specialist dealer will advise you on any questions you may have with regard to operating markilux awnings in comfort.

Availability depends on the model

Hard-wired motor / Radio-controlled motor

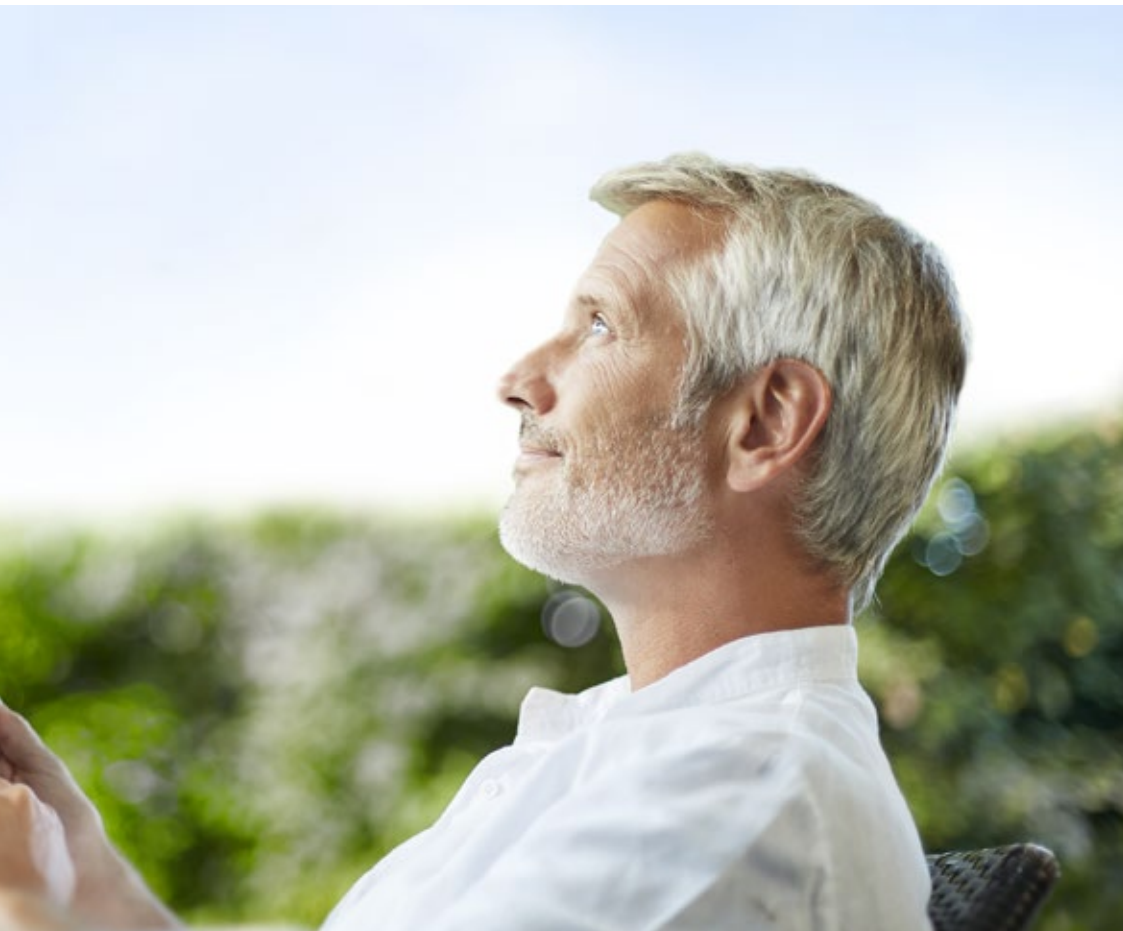


markilux remote control

Comfort can be so easy. Awning, shadeplus, light and warmth at the touch of a button.



Smart Home



Smart control via App/Home automation

Arrange your own personal patio atmosphere by controlling the awning, the lighting, heating and in comfort using RTS technology in conjunction with your smartphone or tablet – whether you are relaxing on your patio or away from home.

Automatic weather controls



Light sensor

Intelligent control of your blind or awning according to the intensity of the sun's rays. Battery operated, so there is no need for a mains power supply.



Rain sensor

The awning retracts automatically in the case of precipitation. This intelligent control mechanism protects the cover on your awning.



markilux vibrabox

Intelligent, sensitive and independent of the mains. Inertia sensor which reacts to the level of vibration caused by the wind and prompts a motor-driven awning to retract if the predetermined wind speed is exceeded.



Light and wind sensor

According to the prevailing weather conditions, this intelligent control system will extend and retract your awning automatically.



LED Line in the cassette

Appealing, ambient light in the form of an LED Line integrated into the cassette. Reserved and understated during the day. Dazzlingly beautiful and cozy in the evening.



LED Lines in the folding arms

A highlight accompanying many pleasant moments. The dimmable LED Lines set the scene on your patio long after the sun has retired for the night.



LED Spots

LED Spots that can be pivoted and dimmed create a lovely atmosphere on your patio in the evening.



Wall sealing profile

This slim aluminum profile closes the gap between the awning and the wall, allowing rain to be discreetly drained off via the awning.



Color combinations and polished chrome fittings

The cassette and styling profile are available in attractive colors and can be combined with one another.



stretch

The perfect solution for narrow patios, recesses or balconies. Thanks to the two crossover arms even awnings with a narrow width can extend further.



Coupled awnings

Depending on the model, up to three awnings can be joined together offering even more shade. A special roller blind elegantly closes the gap between the two awning covers.



More freedom. More free space.

markilux options

Your markilux designer awning configured and tailored to your own personal and individual desires and preferences. Not a standard product, but perfect solar protection with a very personal touch. Unique and special.

markilux shadeplus

Simply block out the glare from a low-lying sun and the glances of inquisitive neighbors and capture the warmth of the day in the evening. This additional cover descends vertically downwards from the front profile to create a wonderfully private room outdoors. Depending on the model, it is also available with a hard-wired/radio-controlled motor.

Availability depends on the model

The right solution whatever the challenge.

With premium products from markilux

Wind protection and increased privacy from markilux are simply an integral part of an atmospheric summer on your patio or balcony. After all, there are hardly any outdoor seating areas that are protected on all sides from the sun, wind and prying eyes.

markilux has elegant and versatile solutions for outdoor seating areas in the garden or buildings that cannot have awnings attached to them for structural reasons. Combine the awning systems with the awning of your choice, or opt for the markilux markant – your very own personal space outdoors.

Allow yourself to be inspired and impressed, as well as advised on tailor-made solar protection solutions by your local markilux specialist dealer.

Lateral wind and privacy protection



markilux format

Life has a lot of nice sides to it. And now your home does, too. The markilux format is vertical protection with textile coziness. It can be extended by adding extra modules and comes with movable elements.



markilux 790

The elegant way of showing your neighbor your privacy. The practical side screen is always by your side when you need it and whenever you feel like making use of its benefits.

Free-standing awning systems from markilux



markilux markant

Your very own personal space in the open air. The free-standing awning system, or system that can be integrated into the existing architecture, provides protection against the weather and sun that can be tailored precisely to your requirements and promises relaxed outdoor living.



markilux syncra

Two posts with a solid cross-connection and markilux designer awning of your choice give you shade exactly where you need it.



markilux planet

A parasol and awning in one. It's an eye-catcher that provides perfect shading for your outdoor space.



Twin steel-link chains

On the market for decades and proven in all types of weather:
the twin round steel-link chains lie protected in the folding arms.

Availability depends on the model






Tension. Pure.

markilux arm technology

Highly durable, virtually noiseless and always perfectly geared to provide optimum cover tension.

Bionic tendon

Inspired by nature, the bionic tendon, developed by markilux and made from high-tech textile fibers, delivers optimum power transference to the front profile and provides friction-free and virtually silent flexion of the arms. It impresses by virtue of its safeness and longevity.




A clear overview.
Opening up
exciting prospects.



Technical specification

Cassette Awnings

	markilux MX-1 compact Page 14	markilux MX-2 Page 16	markilux MX-3 Page 20	markilux MX-4 Page 22	markilux 6000 Page 28	markilux 5010 Page 30	markilux 970 Page 32
							
Max. width × extension	700 × 415 cm	600 × 300 cm	600 × 300 cm	700 × 350 cm	700 × 400 cm	700 × 400 cm	600 × 300 cm
optional		500 × 350 cm	500 × 350 cm	600 × 400 cm			500 × 350 cm
Cassette	376 × 214 mm	280 × 167 mm	230 × 120 mm	275 × 235 mm	255 × 165 mm	218 × 151 mm	266 × 140 mm
Operation	radio-controlled motor	radio-controlled motor	manual operation	radio-controlled motor	manual operation	manual operation	manual operation
optional	<ul style="list-style-type: none"> ➤ hard-wired motor ➤ smart home 	<ul style="list-style-type: none"> ➤ hard-wired motor ➤ smart home 	<ul style="list-style-type: none"> ➤ servo-assisted manual operation ➤ hard-wired motor ➤ radio-controlled motor ➤ smart home 	<ul style="list-style-type: none"> ➤ hard-wired motor ➤ smart home 	<ul style="list-style-type: none"> ➤ servo-assisted manual operation ➤ hard-wired motor ➤ radio-controlled motor ➤ smart home 	<ul style="list-style-type: none"> ➤ servo-assisted manual operation ➤ hard-wired motor ➤ radio-controlled motor ➤ smart home 	<ul style="list-style-type: none"> ➤ servo-assisted manual operation ➤ hard-wired motor ➤ radio-controlled motor ➤ smart home
Arm technology	bionic tendon	bionic tendon	bionic tendon	bionic tendon	bionic tendon	twin steel-link chain	bionic tendon
optional						➤ bionic tendon	
Fixture type	face	face / top / eaves	face / top / eaves	face	face / top / eaves	face / top / eaves	face / top / eaves
optional			➤ wall sealing profile		➤ wall sealing profile	➤ wall sealing profile	➤ niche
Options	<ul style="list-style-type: none"> ➤ LED Line / Spots in the front profile ➤ LED ambient lighting ➤ LED Spots under the cassette ➤ color combinations ➤ shadeplus ➤ valance 	<ul style="list-style-type: none"> ➤ LED Line in the cassette ➤ color combinations 	<ul style="list-style-type: none"> ➤ LED Line in the cassette ➤ color combinations 	<ul style="list-style-type: none"> ➤ colored lighting ➤ LED Line in the cassette ➤ LED Spots in the side caps ➤ LED Spots in the front profile ➤ external light sources ➤ color combinations ➤ coupled awning 	<ul style="list-style-type: none"> ➤ LED Spots in the front profile ➤ end cap insert in stainless steel ➤ end cap trim in polished chrome ➤ shadeplus ➤ valance ➤ coupled awning 	<ul style="list-style-type: none"> ➤ front profile end caps in polished chrome ➤ shadeplus ➤ valance ➤ coupled awning 	<ul style="list-style-type: none"> ➤ LED Line in the cassette ➤ color combinations ➤ shadeplus

Semi-cassette and Open Style Awnings

markilux®

markilux 990

Page 34



500 × 300 cm

217 × 124 mm

manual operation

- servo-assisted manual operation
- hard-wired motor
- radio-controlled motor
- smart home

twin steel-link chain

- bionic tendon

face / top / eaves

- wall sealing profile

- end cap insert in polished chrome
- valance

markilux 900

Page 36



400 × 200 cm

225 × 105 mm

manual operation

- hard-wired motor
- radio-controlled motor
- smart home

bionic tendon

clamp-in posts / top

- top fixture

markilux 3300

Page 38



700 × 400 cm

224 × 192 mm

manual operation

- servo-assisted manual operation
- hard-wired motor
- radio-controlled motor
- smart home

bionic tendon

face / top / eaves

- wall sealing profile
- niche

- valance
- coupled awning

markilux 1600

Page 42



710 × 400 cm

254 × 223 mm

manual operation

- servo-assisted manual operation
- hard-wired motor
- radio-controlled motor
- smart home

twin steel-link chain

- bionic tendon

face / top / eaves

- wall sealing profile

- LED Line in folding arms
- end caps in polished chrome
- shadeplus
- valance
- coupled awning
- stretch

markilux 1710

Page 44



700 × 350 cm

700 × 400 cm (mx 1700)

236 × 217 mm

manual operation

- servo-assisted manual operation
- hard-wired motor
- radio-controlled motor
- smart home

bionic tendon

face / top / eaves

- wall sealing profile

- LED Line in folding arms
- end caps and end cap inserts in polished chrome
- coupled awning
- stretch

markilux 930

Page 46



500 × 300 cm

286 × 122 mm

manual operation

- servo-assisted manual operation

twin steel-link chain

face

- top fixture

markilux 1300

Page 48



700 × 400 cm

212 × 232 mm

manual operation

- servo-assisted manual operation
- hard-wired motor
- radio-controlled motor
- smart home

twin steel-link chain

face / top / eaves

- aluminum coverboard

- LED Line in folding arms
- shadeplus (manuel)
- pitch adjustment gear
- coupled awning

Pergola Awnings

markilux pergola stretch

Page 52



markilux pergola style

Page 54



markilux pergola classic

Page 58



markilux pergola cubic

Page 60



markilux pergola compact

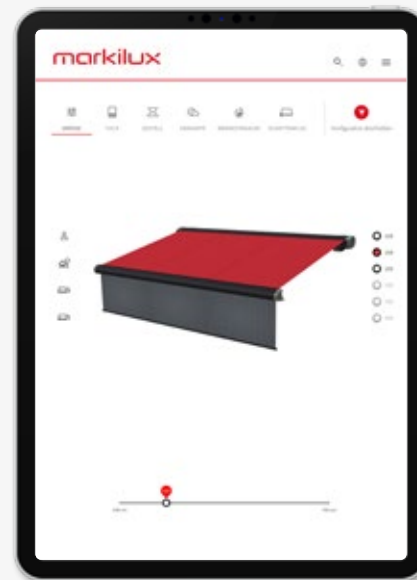
Page 62



Max. width × extension	700 × 700 cm	600 × 500 cm	600 × 450 cm	600 × 450 cm	450 × 400 cm
optional		500 × 600 cm	500 × 600 cm	500 × 600 cm	
Cassette	163 × 125 mm	205 × 160 mm	Ø 187 mm	200 × 160 mm	125 × 125 mm
	cover folds away with track-guided supporting profiles	tracfix cover guidance with lateral guide tracks supported by slim posts	tracfix cover guidance with lateral guide tracks supported by slim posts	tracfix cover guidance with lateral guide tracks supported by slim posts	tracfix cover guidance with lateral guide tracks supported by slim posts
Operation	radio-controlled motor	radio-controlled motor	hard-wired motor	hard-wired motor	hard-wired motor
optional	➤ smart home	➤ hard-wired motor ➤ smart home	➤ radio-controlled motor ➤ smart home	➤ radio-controlled motor ➤ smart home	➤ radio-controlled motor ➤ smart home
Fixture type	face / top / eaves	face / top / eaves	face / top / eaves	face / top / eaves	face / top / eaves
optional	➤ incl. wall sealing profile and system coverboard	➤ wall sealing profile	➤ wall sealing profile	➤ wall sealing profile	➤ wall sealing profile
Options	<ul style="list-style-type: none"> ➤ LED lighting in the lighting bars and / or cross beams ➤ vertical roller blinds ➤ wind protection / extra privacy ➤ cross-beam ➤ coupled awning 	<ul style="list-style-type: none"> ➤ colored lighting ➤ LED lighting in the cassette, guide tracks, posts and / or footplate covers ➤ shadeplus ➤ wind protection / extra privacy ➤ telescopic posts ➤ ballast boxes ➤ coupled awning 	<ul style="list-style-type: none"> ➤ LED lighting in the guide tracks and / or cover support tube ➤ shadeplus ➤ wind protection / extra privacy ➤ round / square posts ➤ telescopic posts ➤ cover support tube ➤ ballast boxes ➤ coupled awning 	<ul style="list-style-type: none"> ➤ LED lighting in the cassette, guide tracks and / or cover support tube ➤ shadeplus ➤ wind protection / extra privacy ➤ round / square posts ➤ telescopic posts ➤ cover support tube ➤ ballast boxes ➤ coupled awning 	<ul style="list-style-type: none"> ➤ LED lighting in the cassette, guide tracks and / or cover support tube ➤ shadeplus / drop valance (manual) ➤ wind protection / extra privacy ➤ round / square posts ➤ telescopic posts ➤ cover support tube ➤ ballast boxes



markilux Awning Configurator



Create the most alluring shade in the world

Configure your markilux designer awning including cover and optional accessories at markilux.com or visualize your dream awning live on the wall of your own home using the free markilux AR App. Your markilux specialist dealer will advise you personally on site, will draw up an offer tailored to your requirements and install the product professionally.



The awning configurator
at markilux.com



markilux 3D App
Free in your App Store

Allow yourself to be inspired, enthused and advised

Every option can be found in the showroom of a markilux specialist dealer near you or at markilux.com

The best under the sun. Create the most alluring shade in the world.

Innovative technology and the pinnacle of quality, have received both acclaim and multiple awards. Made in Germany. Ideas, detailed information, professional advice and all the exquisite markilux awning fabric patterns can be found in your specialist dealer's showroom and at [markilux.com](https://www.markilux.com)



Folding-arm awnings



Pergola awnings



Awning systems



Glass canopy awnings



Vertical roller blinds



Wind and privacy protection



[markilux.com](https://www.markilux.com)



markilux®

The best under the sun