

WHERE MAGIC HAPPENS...







The ultimate combination of quality and design

In developing its façade cladding, Renson® paid a lot of attention to design, personalisation and quality of finishing.

You create your façade cladding according to your own taste. Horizontal or vertical, they can be integrated into a wide variety of styles: from classic to modern to contemporary. This is how you create a unique, stylish, elegant, and contemporary look for your home or business.

Garage gates and doors integrate smoothly into one tight façade surface. Functional elements such as intercom or doorbell are seamlessly integrated. Thanks to the individual profiles, you can even finish curved façades and the high-quality finishing makes them suitable for interior applications as well.

Of course, a simple and flexible installation was paramount. Invisible fixations provide a sleek design and allow thermal expansion at the same time.

Renson® stands for sustainability, and this aluminium façade cladding is no exception. It is not only durable, but also resistant to all weather conditions. Lightweight yet strong... and, above all, extremely easy to maintain.

INTRO 7

WHY CHOOSE RENSON®? 7
FAÇADE, OUTDOOR, INTERIOR 11
HORIZONTAL LINIUS® RANGE 14
VERTICAL LINARTE® RANGE 15

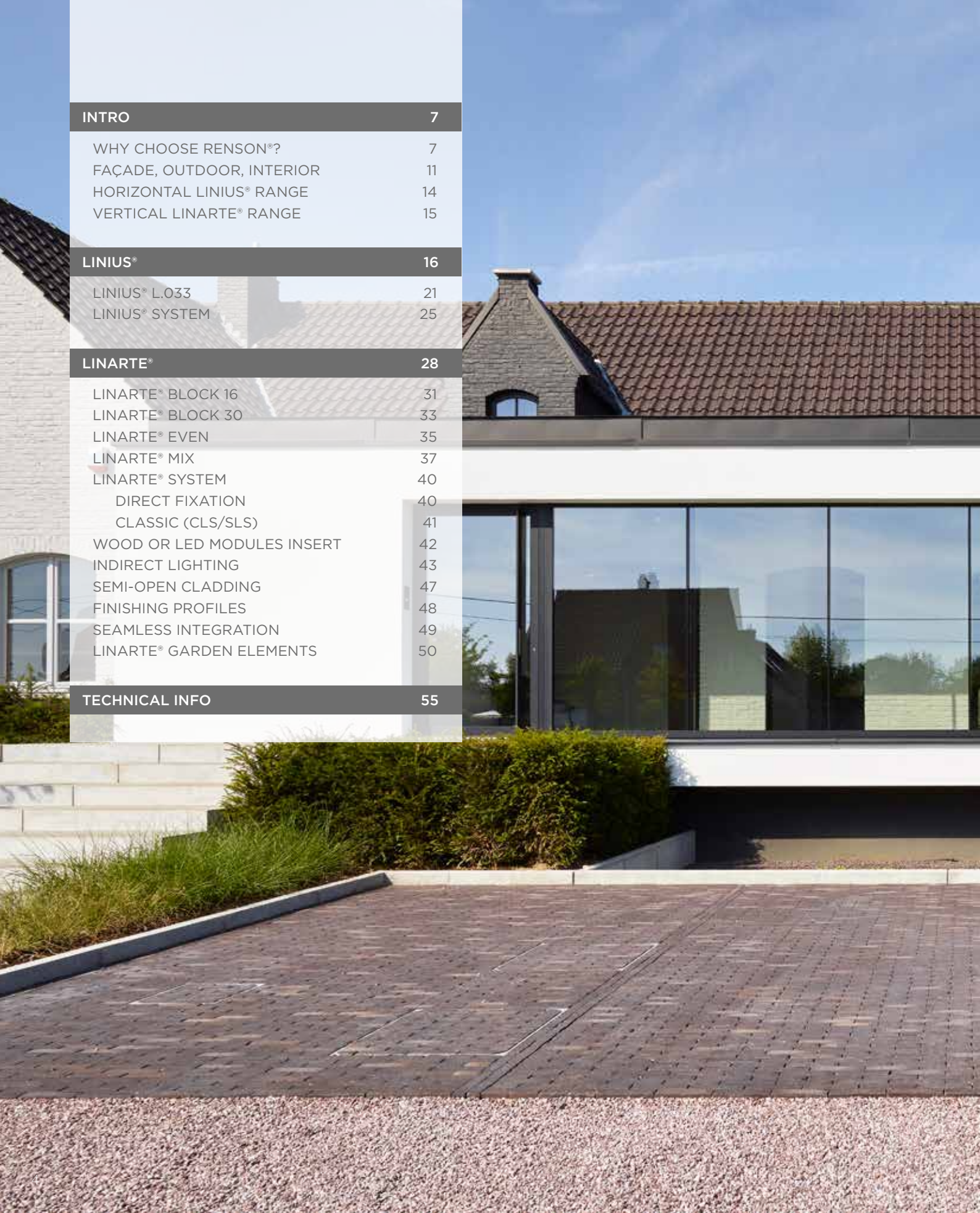
LINIUS® 16

LINIUS® L.033 21
LINIUS® SYSTEM 25

LINARTE® 28

LINARTE® BLOCK 16 31
LINARTE® BLOCK 30 33
LINARTE® EVEN 35
LINARTE® MIX 37
LINARTE® SYSTEM 40
 DIRECT FIXATION 40
 CLASSIC (CLS/SLS) 41
WOOD OR LED MODULES INSERT 42
INDIRECT LIGHTING 43
SEMI-OPEN CLADDING 47
FINISHING PROFILES 48
SEAMLESS INTEGRATION 49
LINARTE® GARDEN ELEMENTS 50

TECHNICAL INFO 55





INTRO

LINIUS

LINARTE

TECHNICAL INFO

Linarte®



Linus®



Why choose Renson® façade cladding?

Sleek design

Looking for an extra touch to your home, shop or company building? With Linius and Linarte façade cladding you are guaranteed to impress. Horizontal or vertical, in any colour, for both inside and outside and even as a seamless finish for curved façades or over corners. Thanks to the invisible fixings, you can be sure of an excellent result.

Endlessly personalisable

A subtle design or clear statement: get creative with the possibilities for personalising your façade with different infills in wood or LED lighting, or by combining colours or integrating your house number. Outdoor sockets, intercom, letterbox or outdoor tap are subtly incorporated.

Easy to install

Aluminium profiles are light and easy to work with. Thanks to the patented fastening system, they can be fastened to the supports quickly and without screws. This invisible clip system is also width-adjustable and easily replaceable, so there are a lot of advantages to be gained even during the installation.

Sustainable quality

By surface mounting with the aluminium profiles you can sure of a durable and sturdy façade cladding, which can withstand the most extreme weather conditions. Moreover, aluminium façade cladding is also an environmentally-friendly choice, because aluminium has earned a reputation as a 'green metal' thanks to its 100% and infinite recyclability.

Maintenance-friendly

Aluminium façade cladding requires virtually no maintenance. The powder-coated profiles retain their colour in all conditions and are easy to clean.

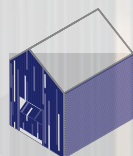


THANKS TO
EASY CLICK
SYSTEM, THE
POSSIBILITIES
ARE LIMITLESS



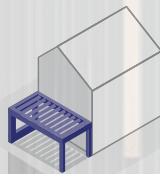


FAÇADE, OUTDOOR, INTERIOR



Beautiful façade cladding

Linus or Linarte give an extra accent to an outer façade and can be perfectly combined with other materials for a unique look and feel that can also be extended into the interior (see below). Looking for a unique façade? Let your creativity run free with Linarte wood or LED module inserts.



Total outdoor concept: the same look and feel

If you're searching for aesthetic uniformity, you can even extend the façade cladding all the way to your terrace. One or multiple sides can be closed off in the same finishing under a terrace covering. Garden elements with the Linarte finishing complete the entirety. One style for all of your home and garden... it guarantees a sleek and uniform look.

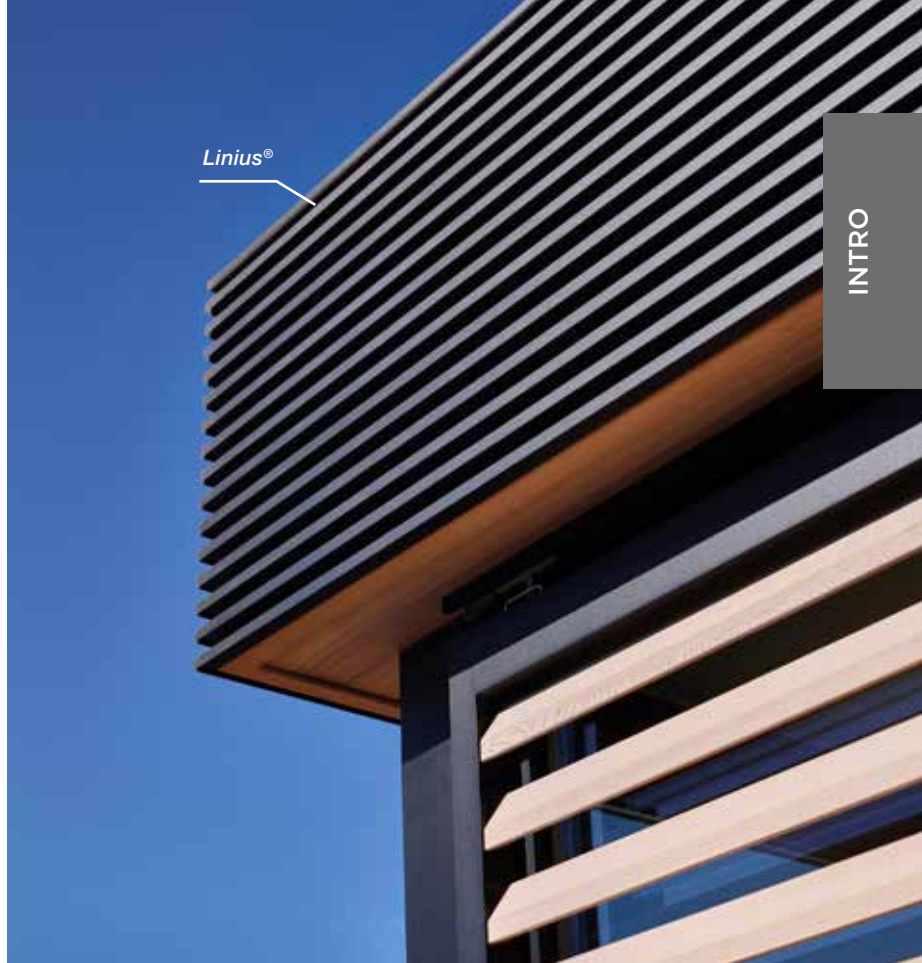


Unique interior

The Renson® aluminium façade cladding can be used both inside and outside to give an extra touch to a wall. You can even let both seamlessly merge with each other. The high-quality materials make it perfectly possible to use, e.g. Linarte profiles to clad a stairwell.



Linarte®



INTRO



HORIZONTAL LINIUS RANGE

Linus® L.033

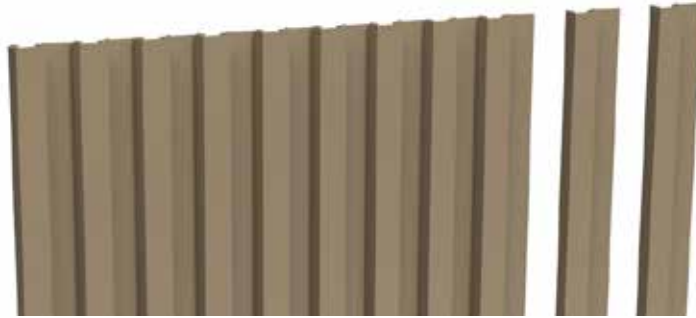
pg. 21



VERTICAL LINARTE® RANGE

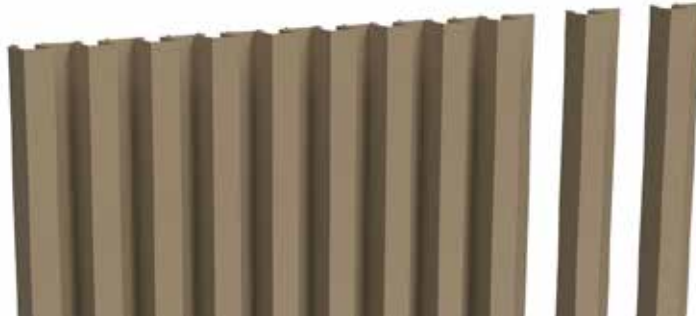
Linarte® Block 16 / Block 16L

pg. 31



Linarte® Block 30

pg. 33



Linarte® Even

pg. 35



The Linius system can be used to finish façades or façade components into a sleek whole with a pronounced horizontal accent. Gates and doors can also be covered with the same profiles. This is how you get a close fit with the rest of the façade to achieve a uniform whole. The façade system consists of individual aluminium profiles that are available in different versions. Depending on the application, you can choose between fully closed or ventilated systems.



LINIUS®



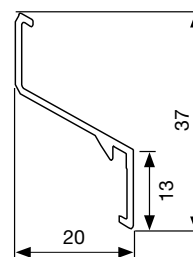
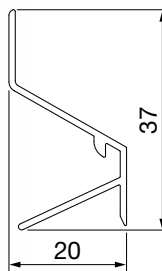
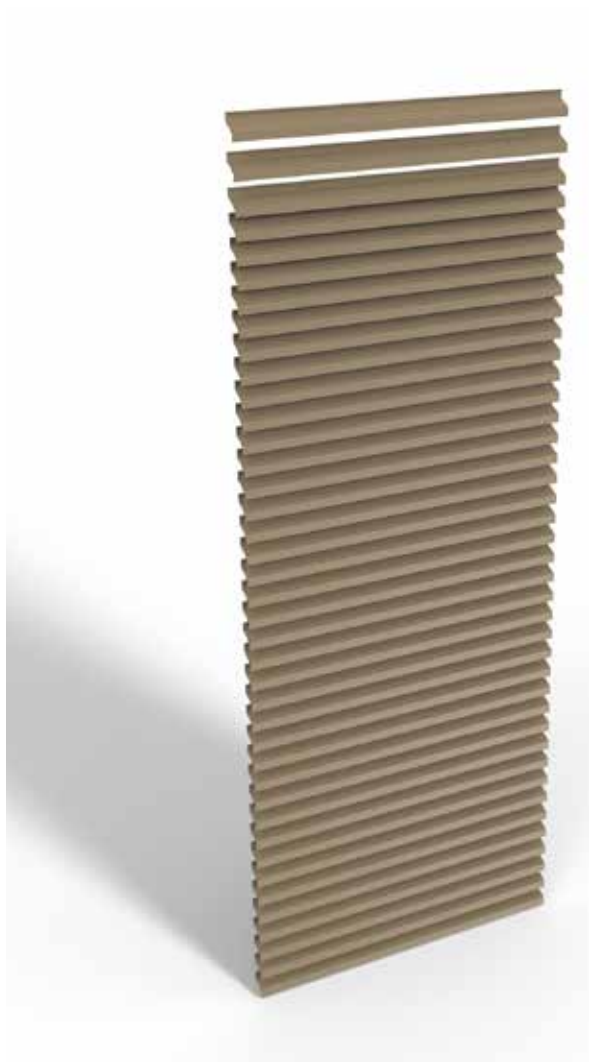






LINIUS® L.033

The Z-shaped Linius L.033 profiles are 20 mm deep. They give your façade a strong horizontal accent, sober and refined, with or without ventilation.





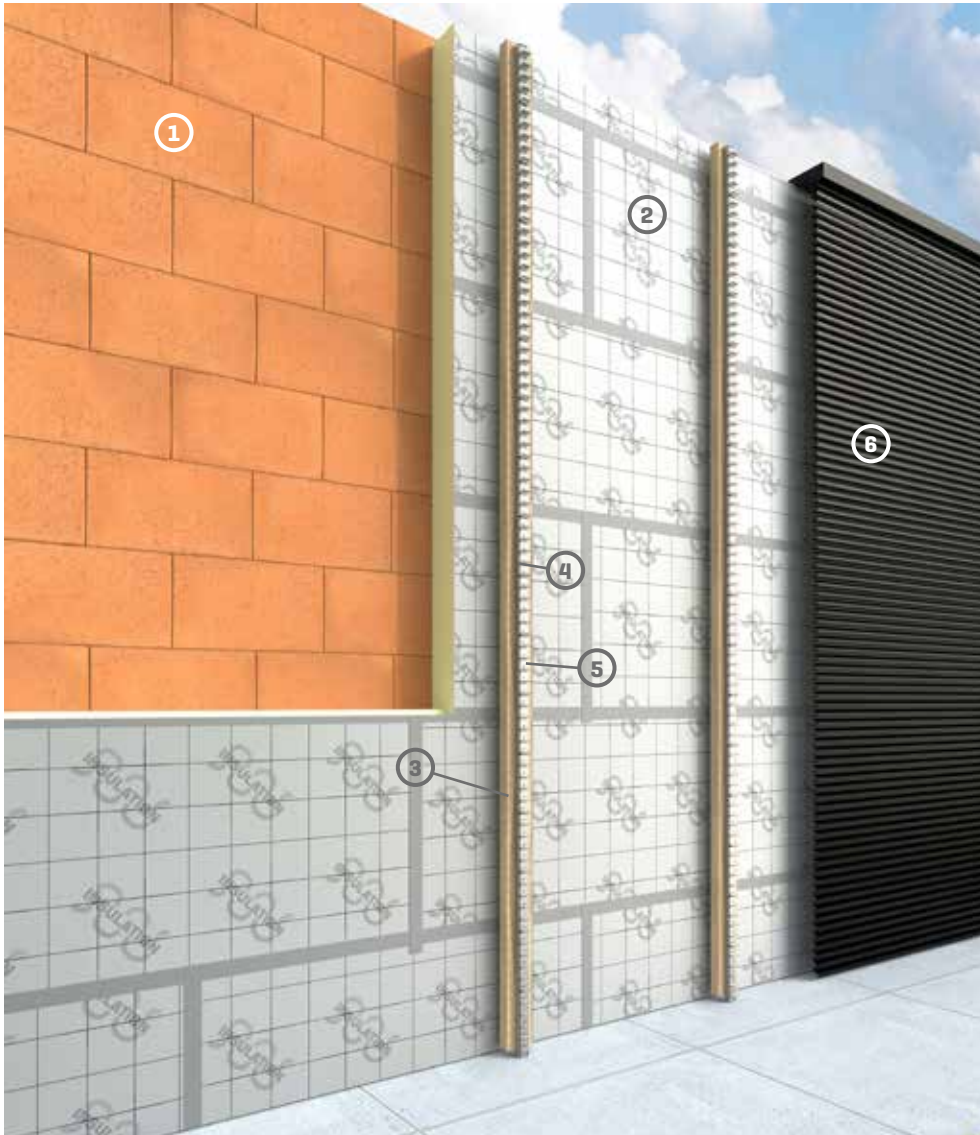


LINIUS





LINIUS[®] SYSTEM



- ① Supporting wall
- ② Insulation
- ③ CLS
- ④ Aluminium supports
- ⑤ Clips
- ⑥ Linius profiles







With the Linarte profiles, façades or façade components can be finished to create a sleek whole with vertical profiles in different designs for both inside and outside, right down to under the patio covers. Gates and doors can also be covered with the same profiles to create a seamless and uniform façade. The continuous façade system consists of individual aluminium profiles that are available in different versions and can be endlessly customised with wood or LED module inserts.



LINARTE®



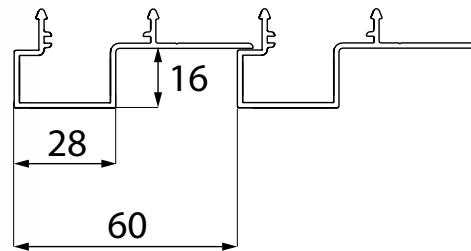
8

LINARTE® BLOCK 16

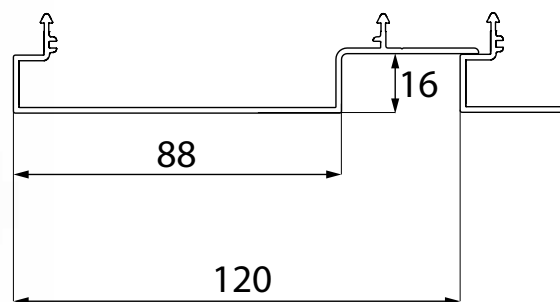
The basic version of the Linarte block-shaped aluminium profile is 16 mm deep. This limited depth creates a subtle vertical play of lines with limited relief and a minimalistic look.



Block 16

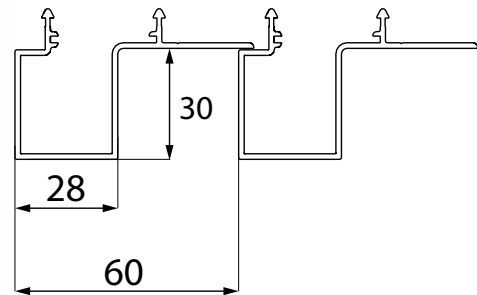
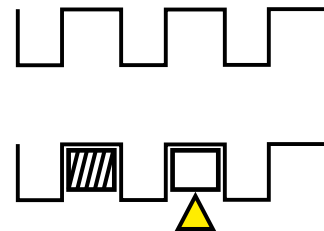


Block 16L



LINARTE® BLOCK 30

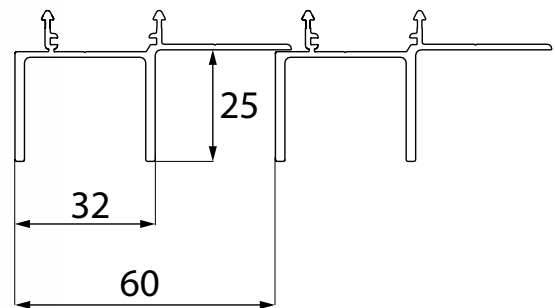
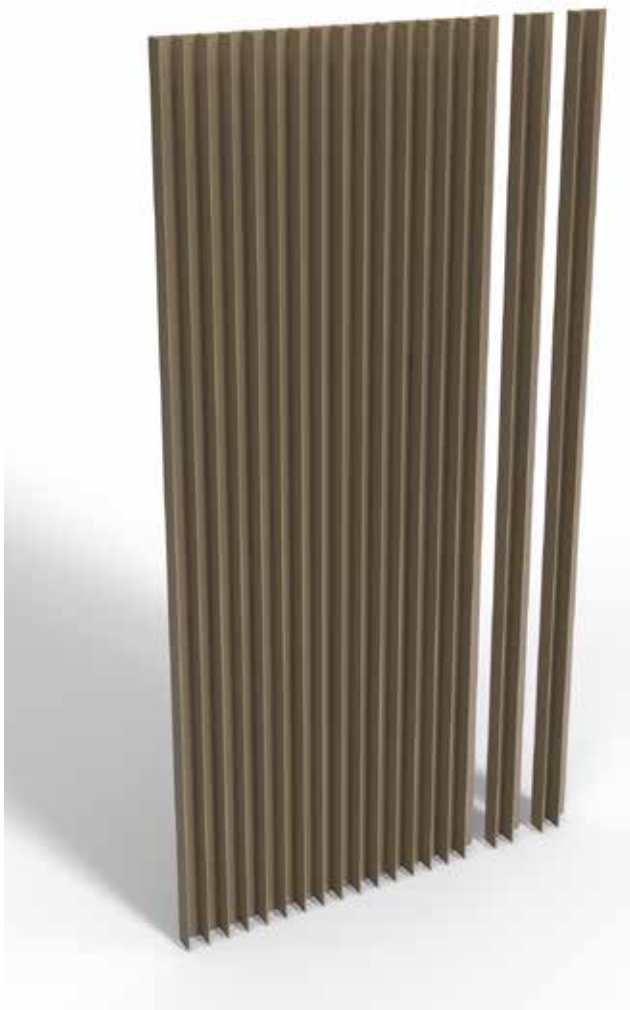
The block-shaped Linarte profile with a depth of 30 mm creates a strong vertical line pattern. This provides striking shadow effects that bring a façade to life. These deep block profiles can be combined with wood or LED module inserts.





LINARTE® EVEN

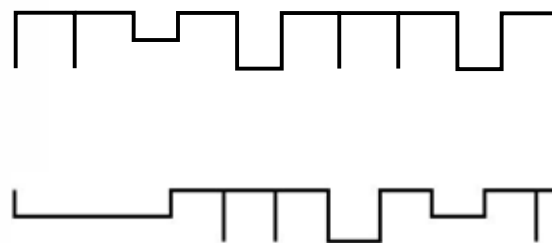
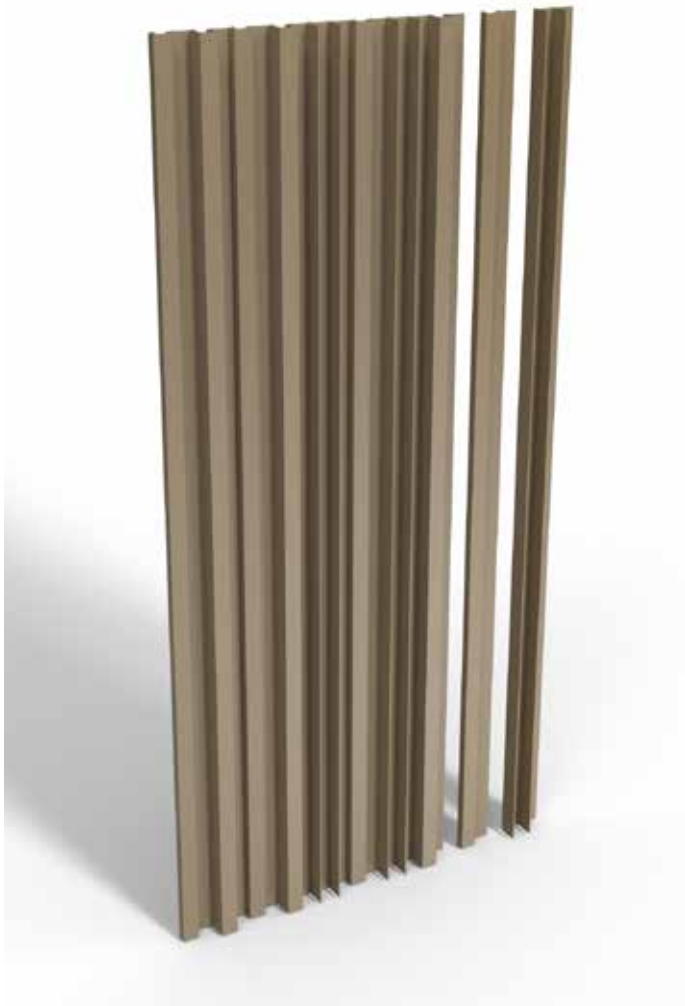
The rib-shaped Even profile that is 25 mm deep provides the sleekest Linarte result and emphasises the façade's vertical lines to the utmost. These profiles can also be combined with inserts in wood or LED modules.





LINARTE® MIX

Block or Even, all Linarte profiles can be combined. Let your creativity run free, create a unique play of shadow and light, and combine your façade with a personal character to your heart's content.



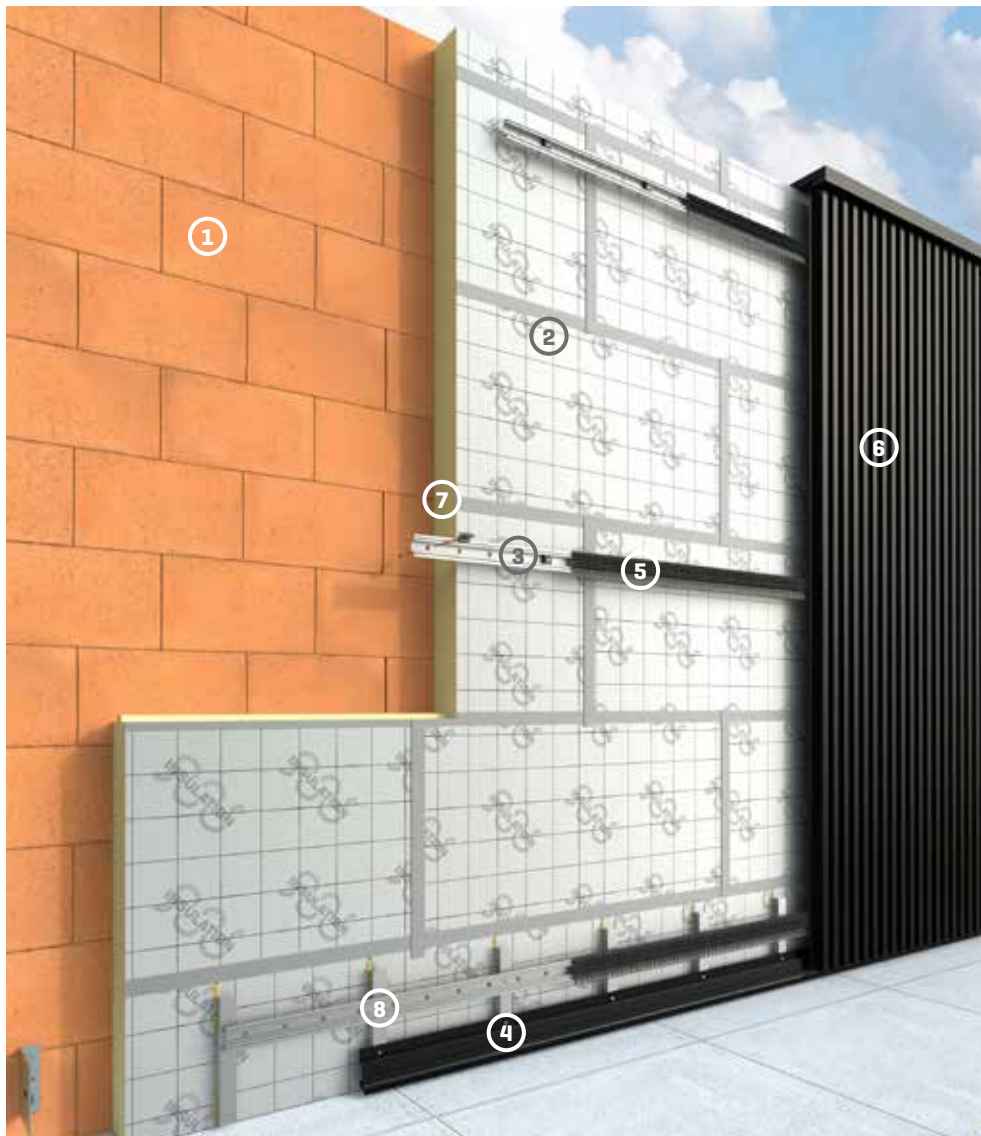




LINARTE

DIRECT FIXATION SYSTEM

With the patented fixation system, the support profiles can be directly affixed to the substructure. Compared to the traditional system using a wooden support structure, this method is more advantageous because of the lower material cost and quicker installation time. Thanks to the direct fixation, there are fewer thermal bridges, the total system depth is smaller, and you have a more sustainable solution.



- | | | | |
|-------------------|----------------------|--------------------|---------------------------------|
| ① Supporting wall | ③ Perforated mullion | ⑤ Clips | ⑦ Spacer screws and anchor plug |
| ② Insulation | ④ Supporting profile | ⑥ Linarte profiles | ⑧ Supporting brackets |

CLASSIC SYSTEM (CLS/SLS)



- ① Supporting wall
- ② Insulation
- ③ CLS/SLS
- ④ Standard mullion
- ⑤ Clips
- ⑥ Linarte profiles
- ⑦ Supporting brackets

WOOD OR LED MODULES INSERTS

Wood or LED modules can be incorporated into both the 30 mm deep Block and the Even profiles. These inserts are available in various lengths and can be integrated anywhere in the façade: randomly, in a sleek line, or repetitively. It gives you 1,001 possibilities to finish to taste. With the Even profiles, it is even possible to integrate wooden house numbers.



INDIRECT LIGHTING

A LED module can be integrated at the bottom of the façade.
This accent lighting adds extra cache to your façade.







LINARTE





SEMI-OPEN CLADDING

You can let the vertical Linarte lines run in front of an opening or a window in a façade. This way, the window disappears into the façade, the entering light is filtered, which creates an intimate atmosphere.

LINARTE

FINISHING PROFILES

Thanks to the finishing profile for the window reveal, it is possible to finish the doors and garage down to the smallest detail.



Door finish



Window finish

SEAMLESS INTEGRATION

Doorbell, intercom, power socket, or water faucet can be perfectly integrated into the façade cladding using the specially developed module. A Niko intercom or power socket can be installed in the housing. Moreover, modules with a blind plate allow other devices to be integrated.



Faucet integration



Door handle integration



Power socket integration



Videophone integration

LINARTE

GARDEN ELEMENTS LINARTE® MODULO

Create a uniform bench and planter in Linarte. Available in square (type '55') and rectangular (type '97') models. Several benches and planters can be combined into a single longer unit ('combination' type).



GARDEN ELEMENTS LINARTE® OUTDOOR LIGHTING

Create uniform LED lighting using the Linarte EVEN design. Available in two heights and four different versions: with one or two LEDs, with or without a power socket.

LINARTE

GARDEN ELEMENTS



GARDEN ELEMENTS LINARTE® ICON

With the Linarte Icon, you can add partitions or privacy walls in your garden and create a unique and uniform outdoor look. The Linarte Icon is an architectural wall customised to your specifications (both in terms of length and height) where one side is clad with Linarte profiles and the other side can be optionally clad with Linarte profiles or finished with a taut Canvas fabric.

LINARTE

GARDEN ELEMENTS





TECHNICAL INFO



ALL RAL COLOURS

Both Linius and Linarte profiles are available in all RAL colours. Ren-son® textured coating for an architectural contemporary look. In addition, finishing with textured coatings is more suitable for outdoor use and is much better at hiding any scratches.



TECHNICAL INFO

OUR TECHNOLOGIES

Linius® finger-trapping protection system

Renson® has developed a special, patented mechanism for sectional doors that ensures that fingers do not get trapped. When a finger accidentally comes between two sections of the gate, the aluminium profile turns away. Once the finger is removed, the profile returns to its original position on its own.



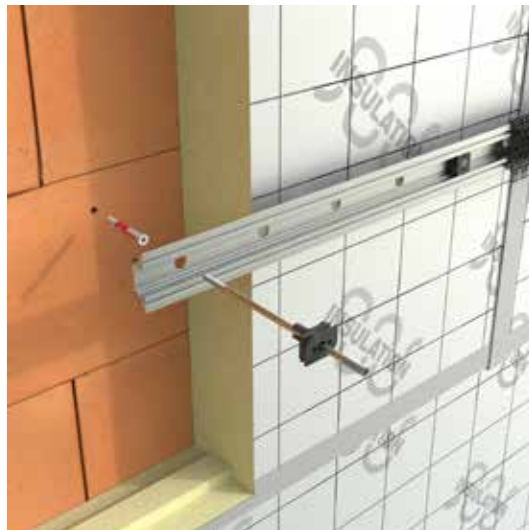
Linarte® click system

The Linarte profiles are invisibly affixed to patented plastic clips. This means that the profiles can be quickly assembled and thermal expansion is always counterbalanced.



Linarte® direct fixation

The mullions can be directly anchored in the outside wall using patented anchor plugs that connect the spacer screws to the carrier. This saves you the costs and installation time in comparison with working with traditional rafters. Moreover, this method is much more sustainable with a minimal number of thermal bridges.



GUARANTEE

High quality

All of the materials we use are of high quality and have been modified for the intended purpose. As the manufacturer, we guarantee:

- 5-year warranty covering all defects arising from normal use and maintenance.
- 10-year colour fastness warranty covering the powder-coating of the aluminium components.
- 5-year warranty covering the gloss of the lacquered profiles.
- 2-year warranty on the LED modules.



MAINTENANCE

Your façade cladding is subjected to every possible kind of weather. This is why we recommend regular maintenance to be able to enjoy it for years to come. Your façade cladding will last longer and it will maintain its original gloss when you ensure it is serviced 1 to 2 times a year. The Renson® Maintenance Set will help you in this regard.

- The Linius and Linarte profiles consist of powder-coated aluminium. An annual cleaning using products from the Renson Maintenance Set is recommended to ensure the intense colour is maintained for years to come, as well as providing extra protection from acid rain, sea air, and UV rays. We recommend the cleaning takes place twice a year in coastal and wooded areas.
- Renson® Clean is a concentrated product with strong cleaning and degreasing properties for managing the most common types of natural dirt, such as dust, oily rainfall, grease stains, moss, insect spores and so on. This product is not comparable with other cleaning products. After rain, you can protect the aluminium profiles with Renson® Protect. This product adds a protective film that makes subsequent maintenance much easier. From now on, you can simply wipe the aluminium clean using a minimum of the Renson® Clean product.
- Do not use either product in direct sunlight or hot weather. If it dries quickly, it can leave stains on the aluminium. Do not use corrosive or aggressive products, scouring pads, or other abrasives to clean the aluminium façade cladding. Never do this with a high-pressure device.
- A maintenance kit is also available for the wooden inserts.



WHERE CAN I FIND RENSON® PRODUCTS?

In order to guarantee that our high-quality and durable screens are also installed professionally, we have built up a network of well-trained Ambassadors and Installers.

Renson® Premium Ambassadors

These are ambassadors with years of experience selling and installing Renson® products. They stay updated on the whole range and guarantee the utmost professional assistance.

Renson® Ambassadors demonstrate our products in their showrooms and ensure that everything is placed in a professional and sound manner. They guarantee a professional after-sales service.

Also see www.renson.eu



VENTILATION



SUN PROTECTION



OUTDOOR

ALSO DOWNLOAD OUR OTHER
INSPIRATION BROCHURES AT
WWW.RENSON.EU



**BUILDING OR RENOVATION PLANS?
VISIT OUR SHOWROOM**

EXIT 5 is open
Monday to Friday: 8:30 a.m. – noon and
1:30 p.m. – 6 p.m.
Saturday: 9 a.m. – noon

Make an appointment by telephone on 056 62 96 87
or online via www.exit5.be

Maalbeekstraat 10 – 8790 Waregem – Belgium
www.exit5.be



Creating healthy spaces

RENSON® Headquarters
 Maalbeekstraat 10, IZ 2 Vijverdam B-8790 Waregem
 Tel. +32 (0)56 62 71 11
 info@renson.eu
 www.renson.eu

