



ANGELS CAMP

CALIFORNIA

ANGELS CAMP WAYFINDING SYSTEM

Funded by CDBG #09-PTAE-6308

DECEMBER 2011



ANGELS CAMP WAYFINDING SYSTEM
TABLE OF CONTENTS

1. FIRST MEETING - MARCH 2011

GATES' PRELIMINARY STUDIES

2. COMMUNITY MEETINGS AND PREFERRED IMAGES

3. ANGELS CAMP WAYFINDING SYSTEM

SIGN LOCATIONS

4. ANGELS CAMP WAYFINDING SYSTEM

SIGN PROGRAM

5. HISTORIC DOWNTOWN

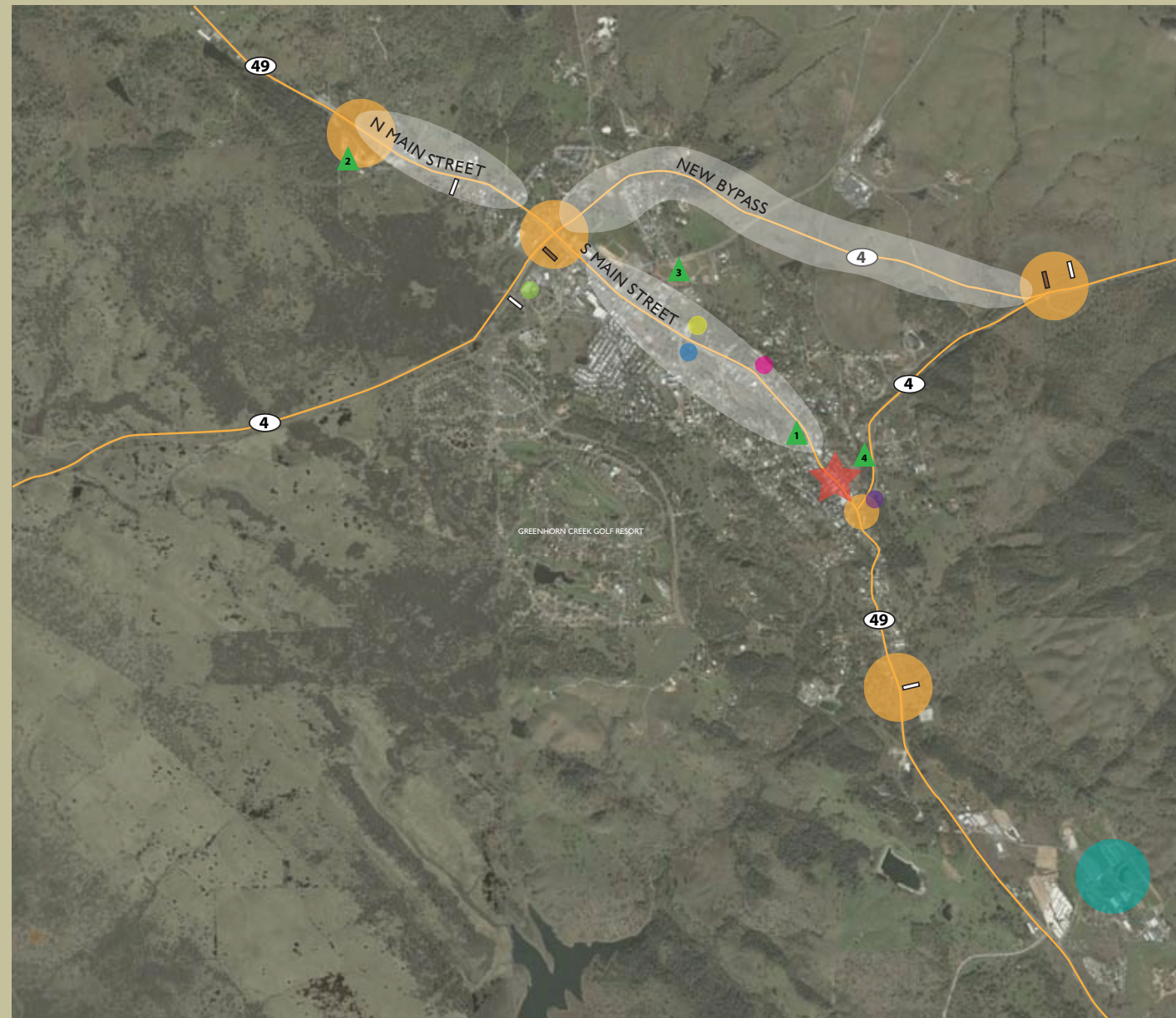
PEDESTRIAN SAFETY



ANGELS CAMP

CALIFORNIA

I. FIRST MEETING - MARCH 2011
GATES' PRELIMINARY STUDIES



EXISTING COMPONENTS









- MAJOR GATEWAY
- EXISTING ANGELS CAMP SIGN
- EXISTING CALIFORNIA HISTORICAL LANDMARK HIGHWAY SIGN
- FAIRGROUNDS
- ★ HISTORIC DOWNTOWN
- ANGELS CAMP POLICE DEPARTMENT
- ANGELS CAMP CITY CLERK
- ANGELS CAMP BUILDING & PLANNING
- ANGELS CAMP FAMILY MEDICAL CENTER
- ANGELS CAMP CITY MUSEUM
- ANGELS CAMP FIRE DEPARTMENT
- ▲ 1 UTICA PARK
- ▲ 2 COPELLO PARK
- ▲ 3 BALL FIELDS
- ▲ 4 PARK

DRAFT 3.31.2011



GATEWAY SIGNAGE

LOCATIONS & TEXT

-  GATEWAY MONUMENT
Same location as existing
"Angels Camp"
-  GATEWAY MONUMENT
Same location as existing
-  GATEWAY MONUMENT -
Move sign between Deer Creek Rd & Brunner Hill Rd
-  GATEWAY MONUMENT
Same location as existing
-  HISTORIC LANDMARK
Same location as existing
Larger Panel Size
-  HISTORIC LANDMARK
Same location as existing
Larger Panel Size
-  HISTORIC DOWNTOWN GATEWAY
-  HISTORIC DOWNTOWN GATEWAY
-  HISTORIC DOWNTOWN GATEWAY
-  CALAVERAS COUNTY
FAIRGROUNDS

TYPICALS

- PARKS
- CITY OFFICES
- VISITORS BUREAU

DRAFT 3.31.2011

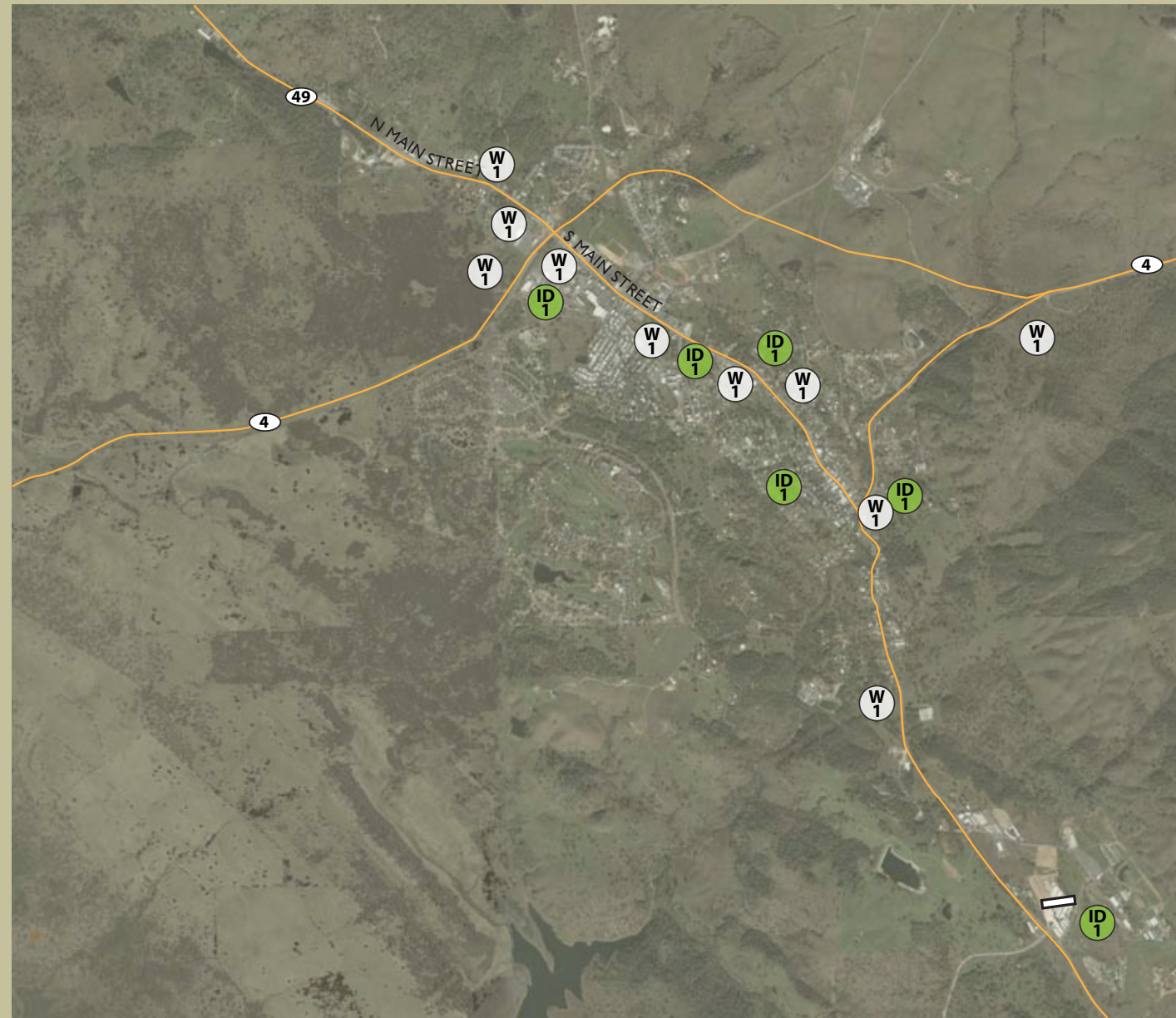


GATES
+ASSOCIATES





ANGELS CAMP WAYFINDING PLAN ANGELS CAMP, CALIFORNIA

MARCH 2011





RECOMMENDED
IDENTITY & WAYFINDING SIGNAGE

-  ANGELS CAMP CITY HALL
-  ANGELS CAMP POLICE DEPARTMENT
-  ANGELS CAMP FIRE DEPARTMENT
-  ANGELS CAMP MUSEUM
-  VISITORS BUREAU
-  WAYFINDING

DRAFT 3.31.2011



GATES
+ASSOCIATES

ANGELS CAMP WAYFINDING PLAN ANGELS CAMP, CALIFORNIA

MARCH 2011





**EXISTING COMPONENTS:
HISTORIC DOWNTOWN ANGELS CAMP**

- PUBLIC PARKING
- EXISTING CROSSWALKS
- HISTORIC DOWNTOWN
- CALAVERAS COUNTY CHAMBER OF COMMERCE
- CALAVERAS VISITORS BUREAU
- FIRE DEPARTMENT

DRAFT 3.31.2011



GATES
+ASSOCIATES

ANGELS CAMP WAYFINDING PLAN ANGELS CAMP, CALIFORNIA

MARCH 2011

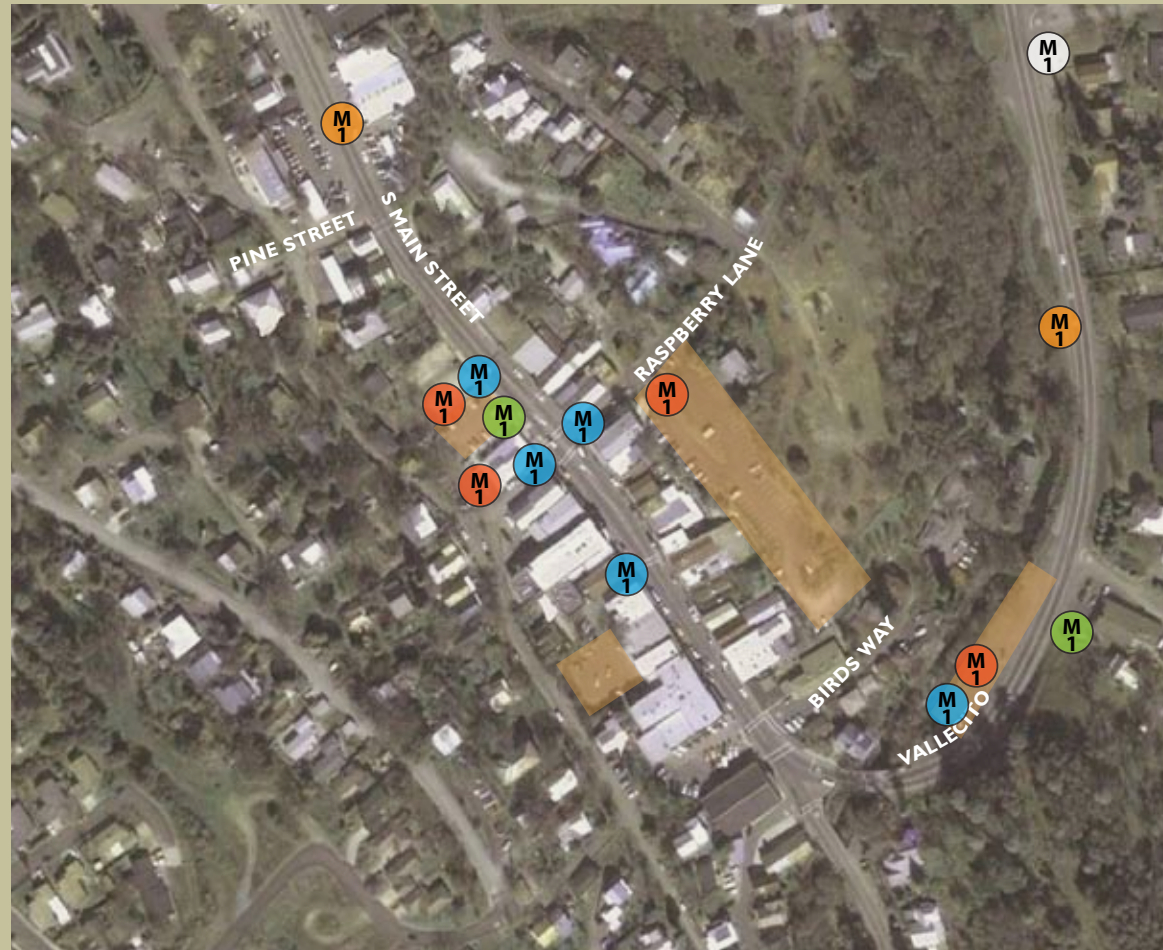


GATES
+ASSOCIATES

ANGELS CAMP WAYFINDING SYSTEM
DECEMBER 2011

DESTINATION, OPPORTUNITY & CONSTRAINTS STUDIES
PRELIMINARY STUDY - DOWNTOWN - EXISTING COMPONENTS





RECOMMENDED

DOWNTOWN SIGNAGE & WAYFINDING

-  HISTORIC DOWNTOWN GATEWAY
-  PARKING
-  KIOSK
-  WAYFINDING SIGN
-  CALAVERAS VISITORS BUREAU
-  FIRE DEPARTMENT

DRAFT 3.31.2011



GATES
+ASSOCIATES

ANGELS CAMP WAYFINDING PLAN ANGELS CAMP, CALIFORNIA

MARCH 2011

ANGELS
CAMP
CALIFORNIA

GATES
+ASSOCIATES

ANGELS CAMP WAYFINDING SYSTEM
DECEMBER 2011

DESTINATION, OPPORTUNITY & CONSTRAINTS STUDIES
PRELIMINARY STUDY -DOWNTOWN - SIGNAGE

ANGELS
CAMP
CALIFORNIA



HISTORIC ARCHITECTURE



HISTORIC ARCHITECTURE



HISTORIC ARCHITECTURE



WEATHERED WOOD



CORRUGATED SHEET METAL



ADOBE WALL



COR-TEN



WOOD



DRY STACKED ROCK WALL

MATERIALS & COLORS

APPROVED COLOR PALETTE



BROWN



RUST



EVERGREEN



SAND



WHITE



CHARCOAL



BLACK

DRAFT 3.31.2011



GATES
+ASSOCIATES

ANGELS CAMP WAYFINDING PLAN ANGELS CAMP, CALIFORNIA

MARCH 2011

ANGELS
CAMP
CALIFORNIA

GATES
+ASSOCIATES

ANGELS CAMP WAYFINDING SYSTEM
DECEMBER 2011

DESTINATION, OPPORTUNITY & CONSTRAINTS STUDIES
PRELIMINARY STUDY - MATERIALS AND COLORS

ANGELS
CAMP
CALIFORNIA

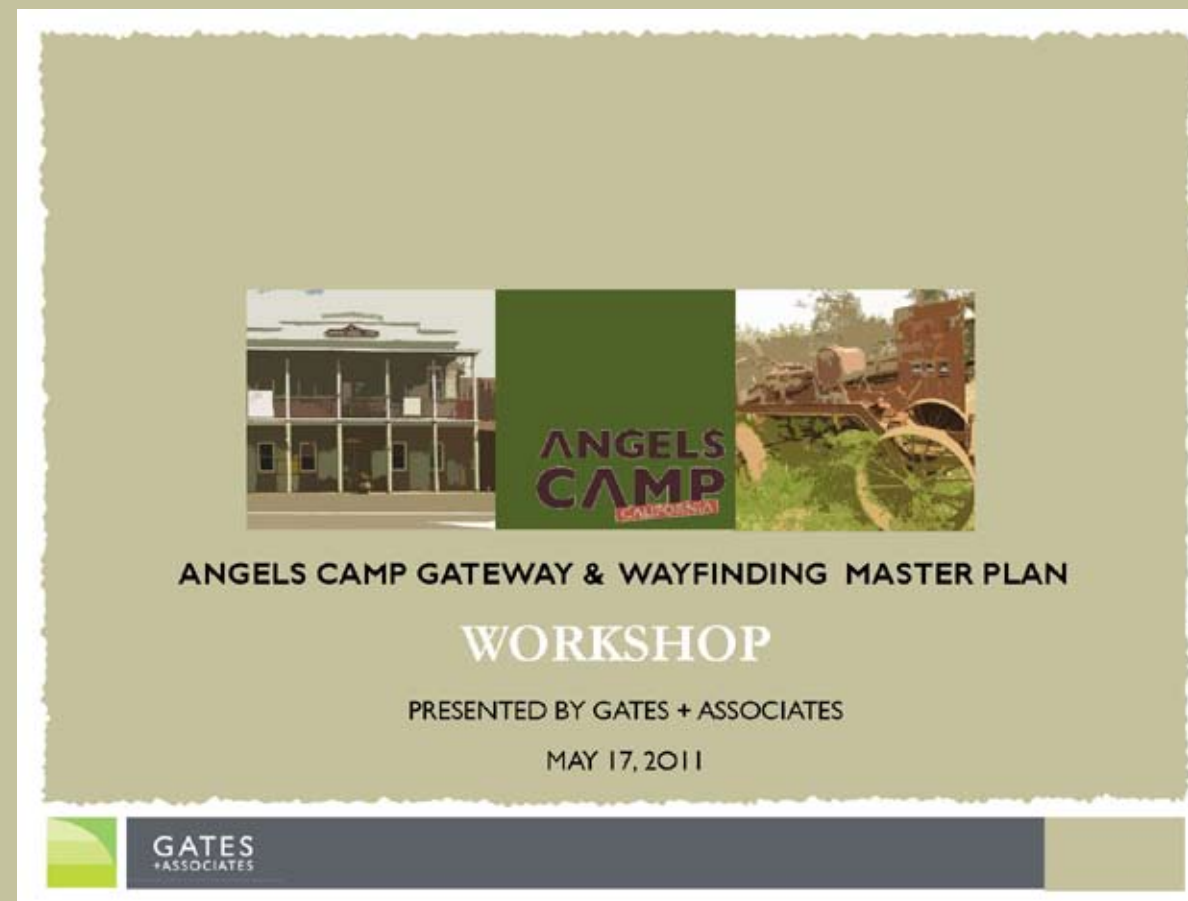


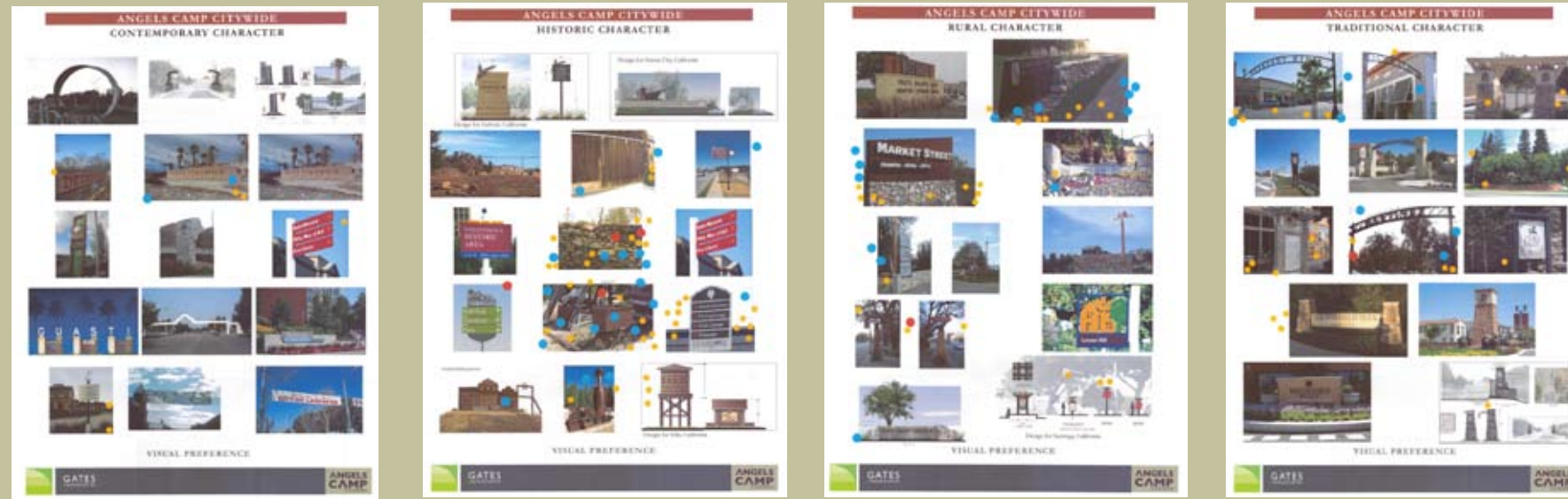
**ANGELS
CAMP**
CALIFORNIA

2. COMMUNITY MEETINGS AND PREFERRED IMAGES

WAYFINDING MASTER PLAN HISTORY

The City of Angels Camp was awarded a Community Development Block Grant (CDBG) by the California Department of Housing and Community Development (HCD) to complete a Wayfinding Plan. The objective of this plan is to promote economic development and thereby create jobs for local residents. As part of the project, three community meetings have been held to collect input on preferences and key community destinations. The following pages include the completed preference boards and compile preferred sign character images selected by participants. These elements have provided the basis for the development of the Wayfinding System Concept.





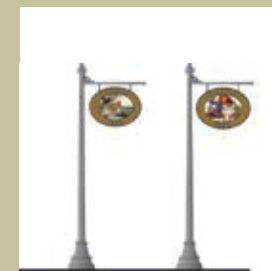
VISUAL PREFERENCE IMAGES - CITY WIDE

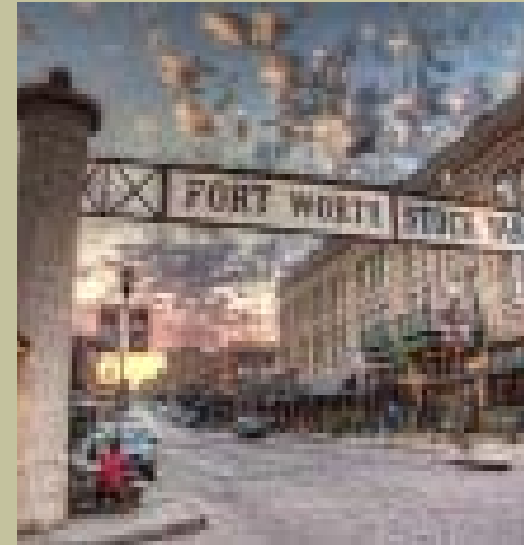


VISUAL PREFERENCE IMAGES - HISTORIC DOWNTOWN

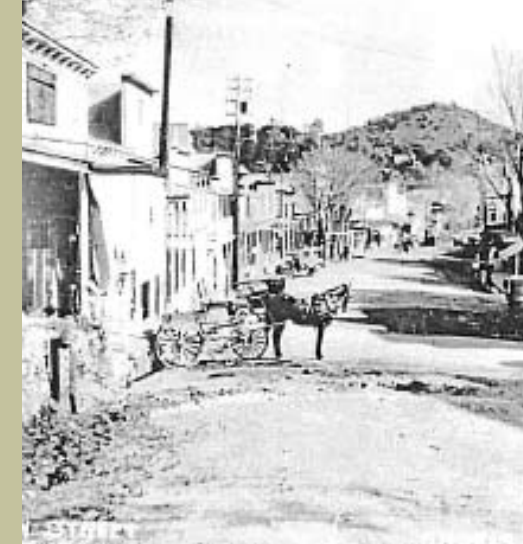
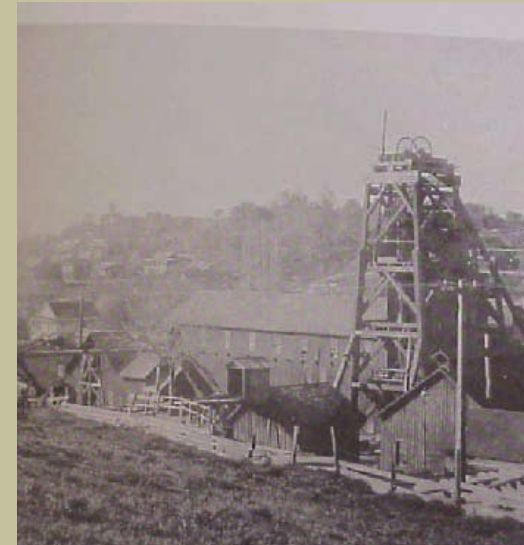
DESTINATIONS LIST FOR WAYFINDING SIGNAGE

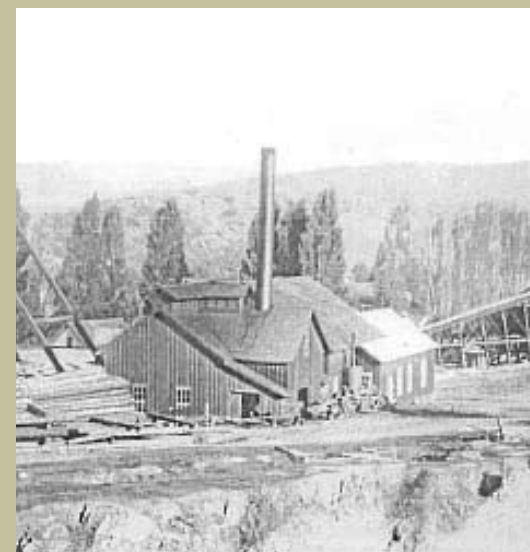
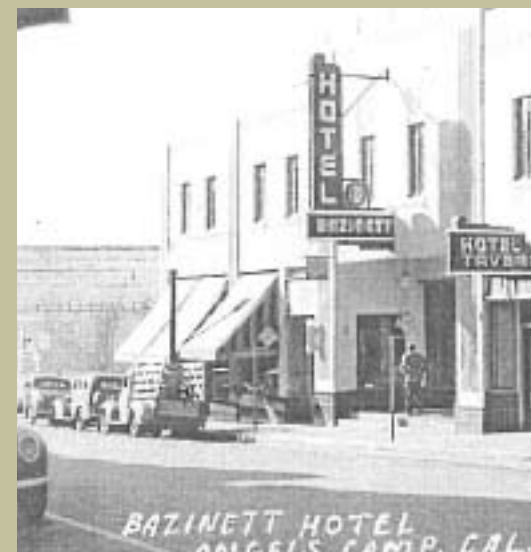
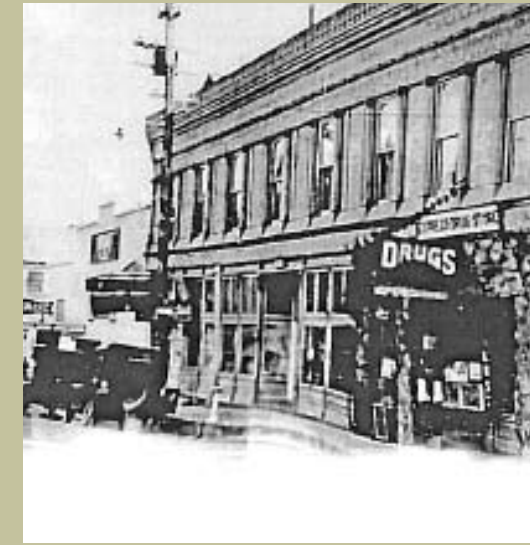
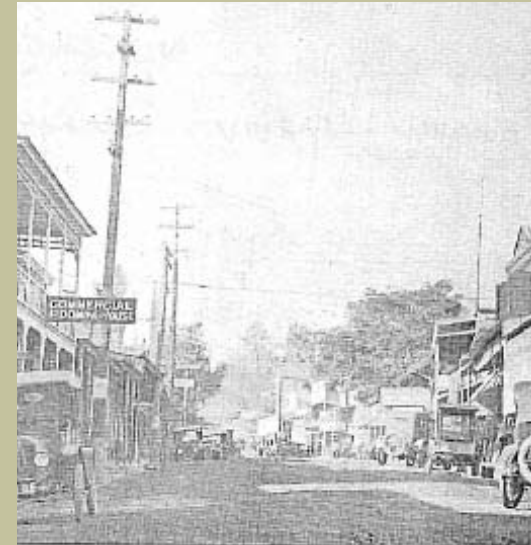
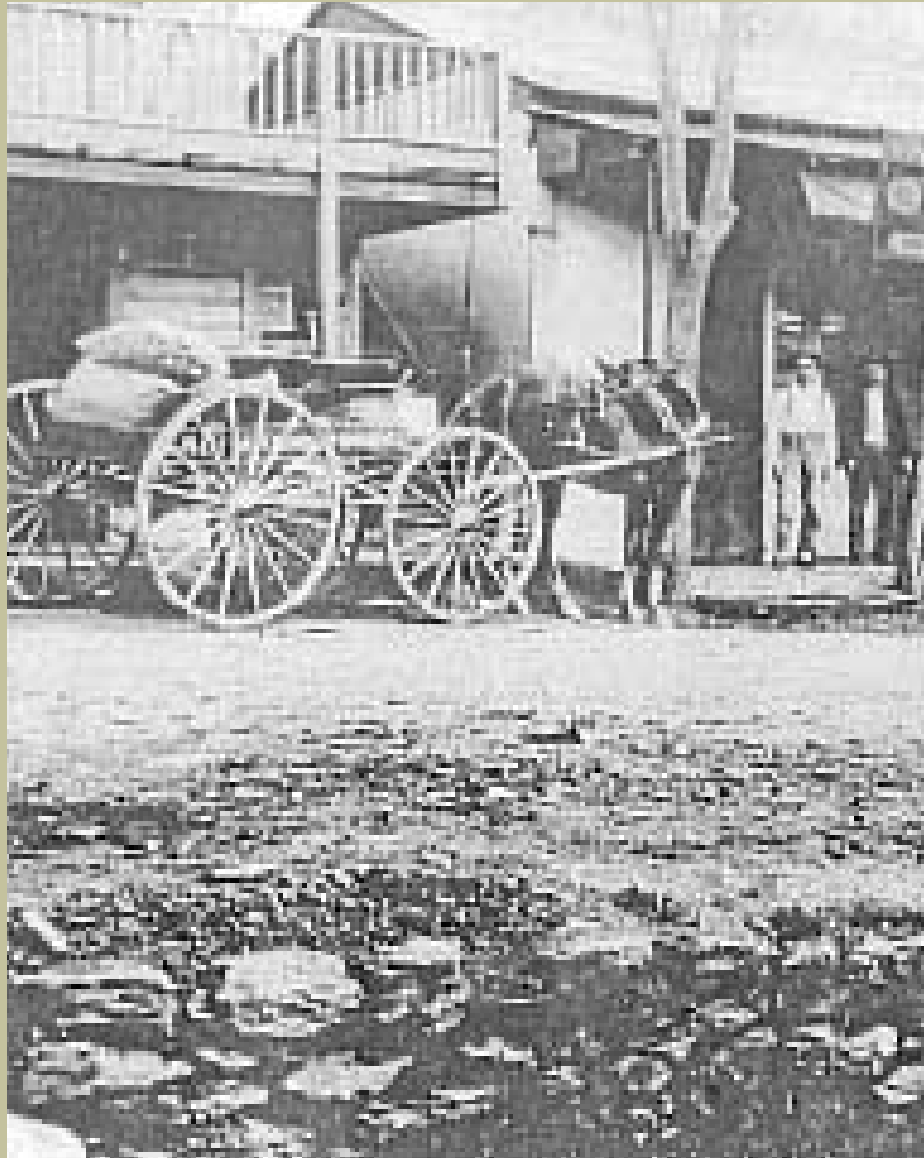


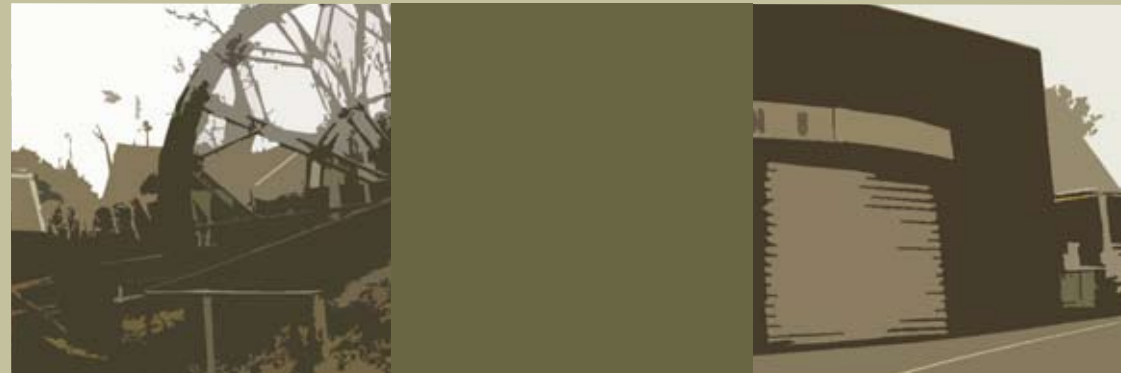








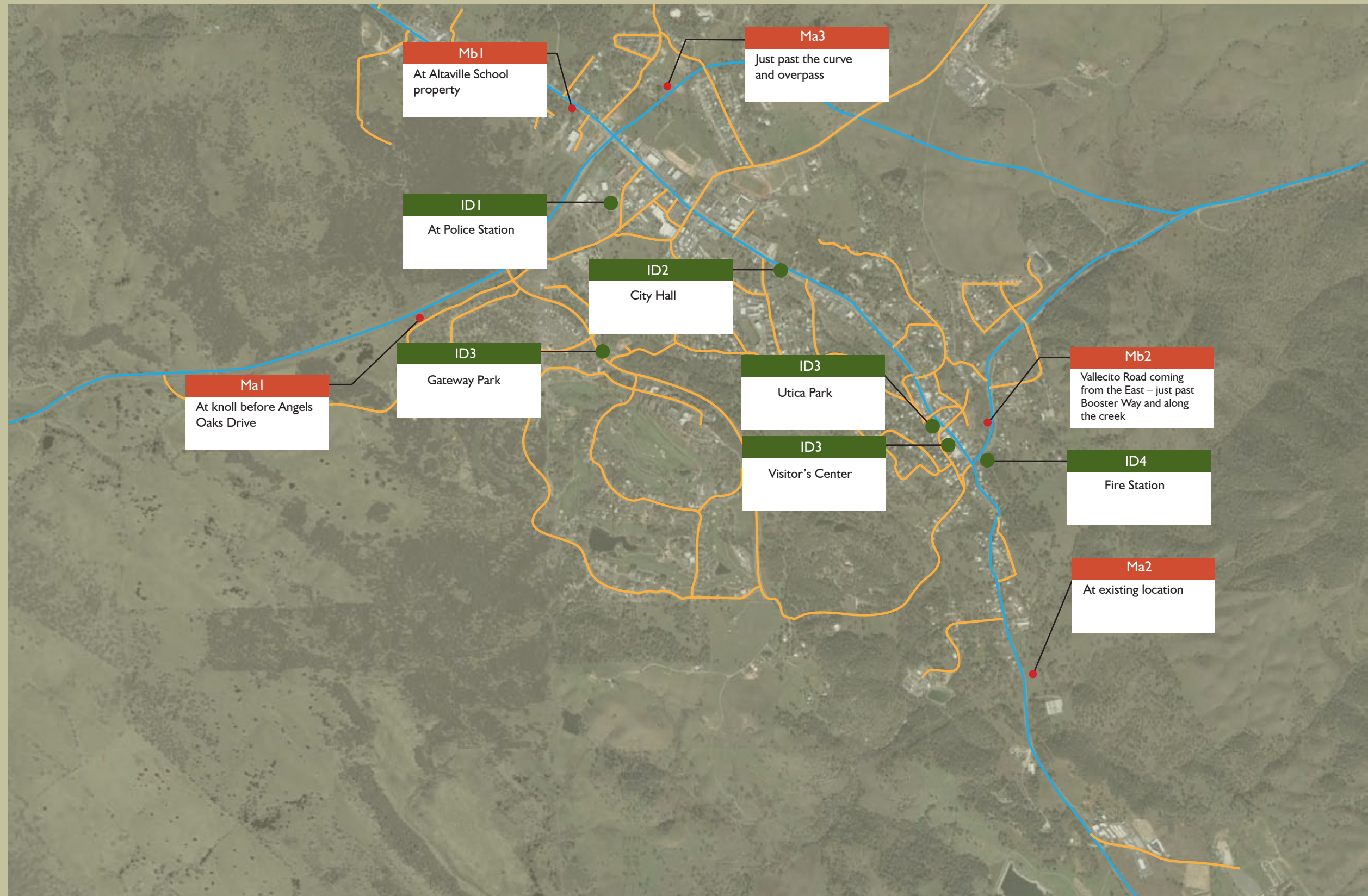


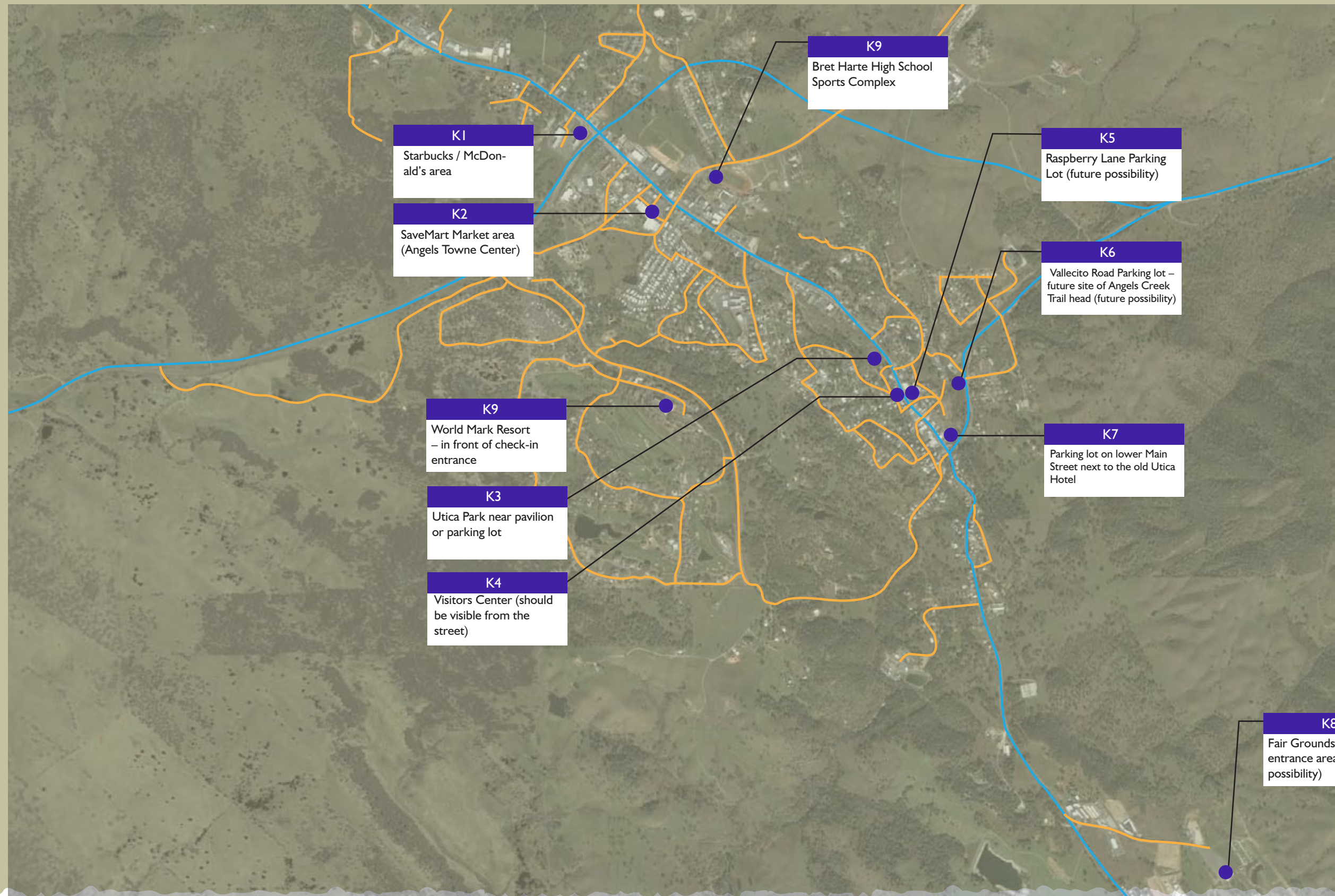


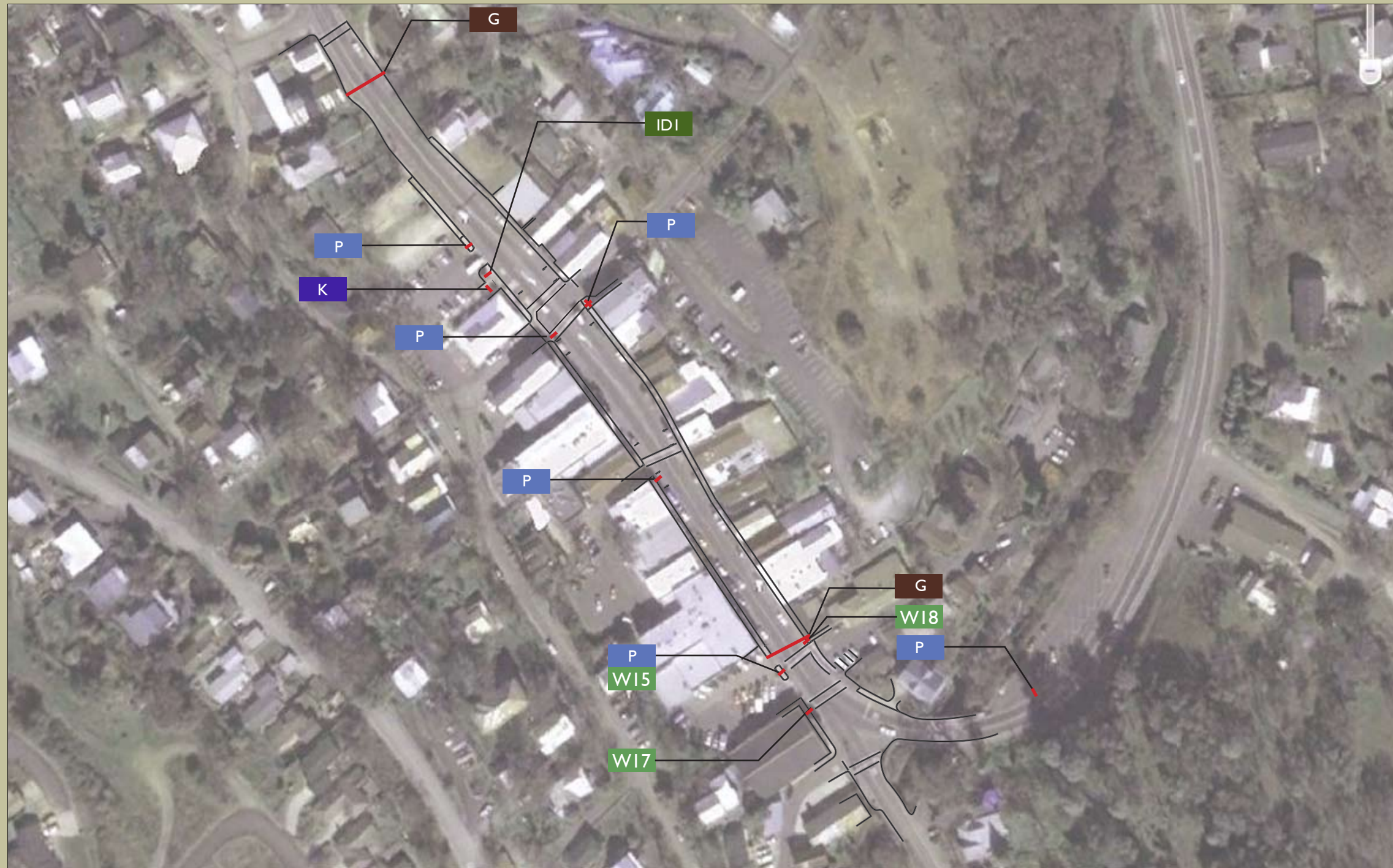
ANGELS CAMP

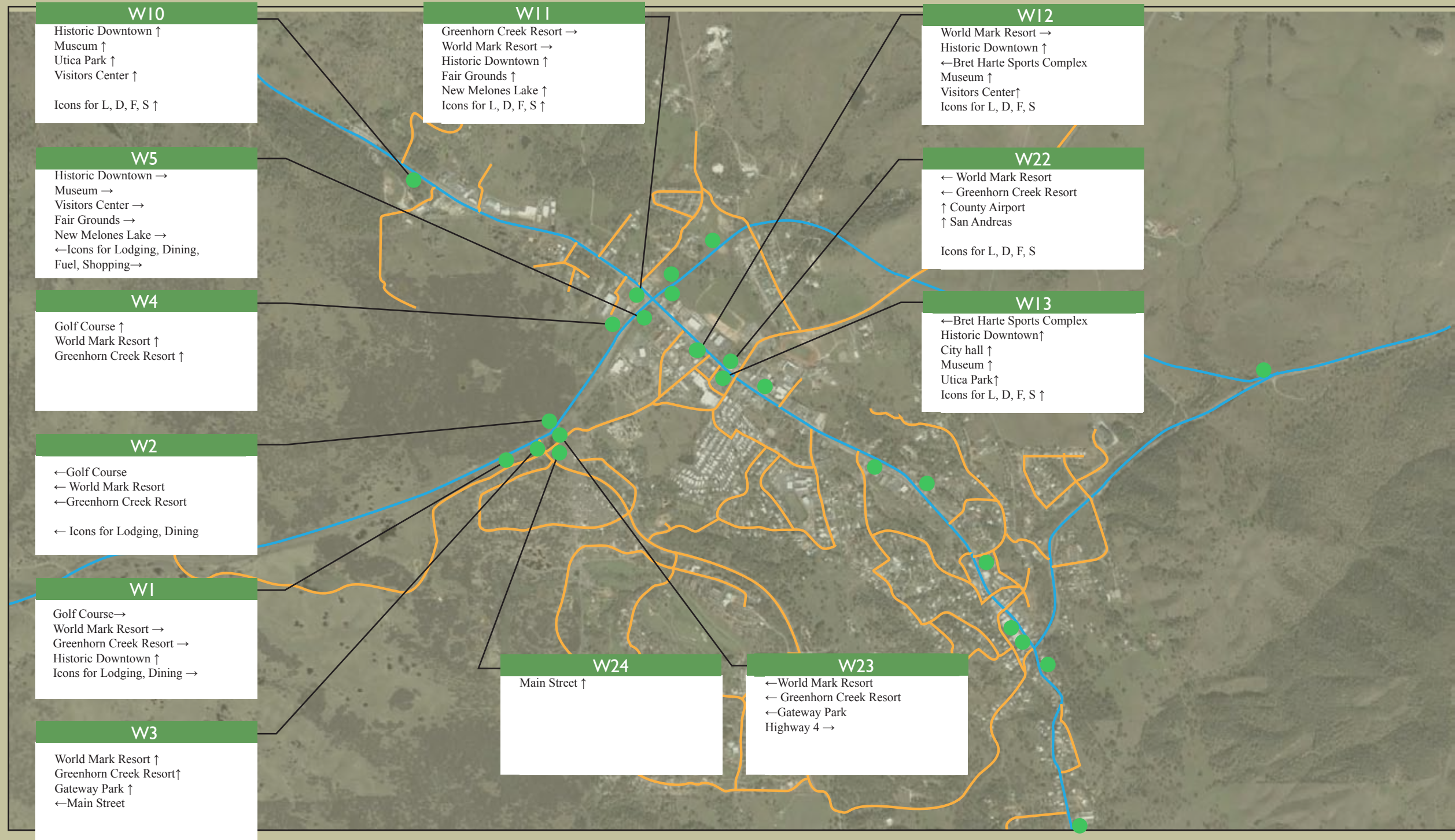
CALIFORNIA

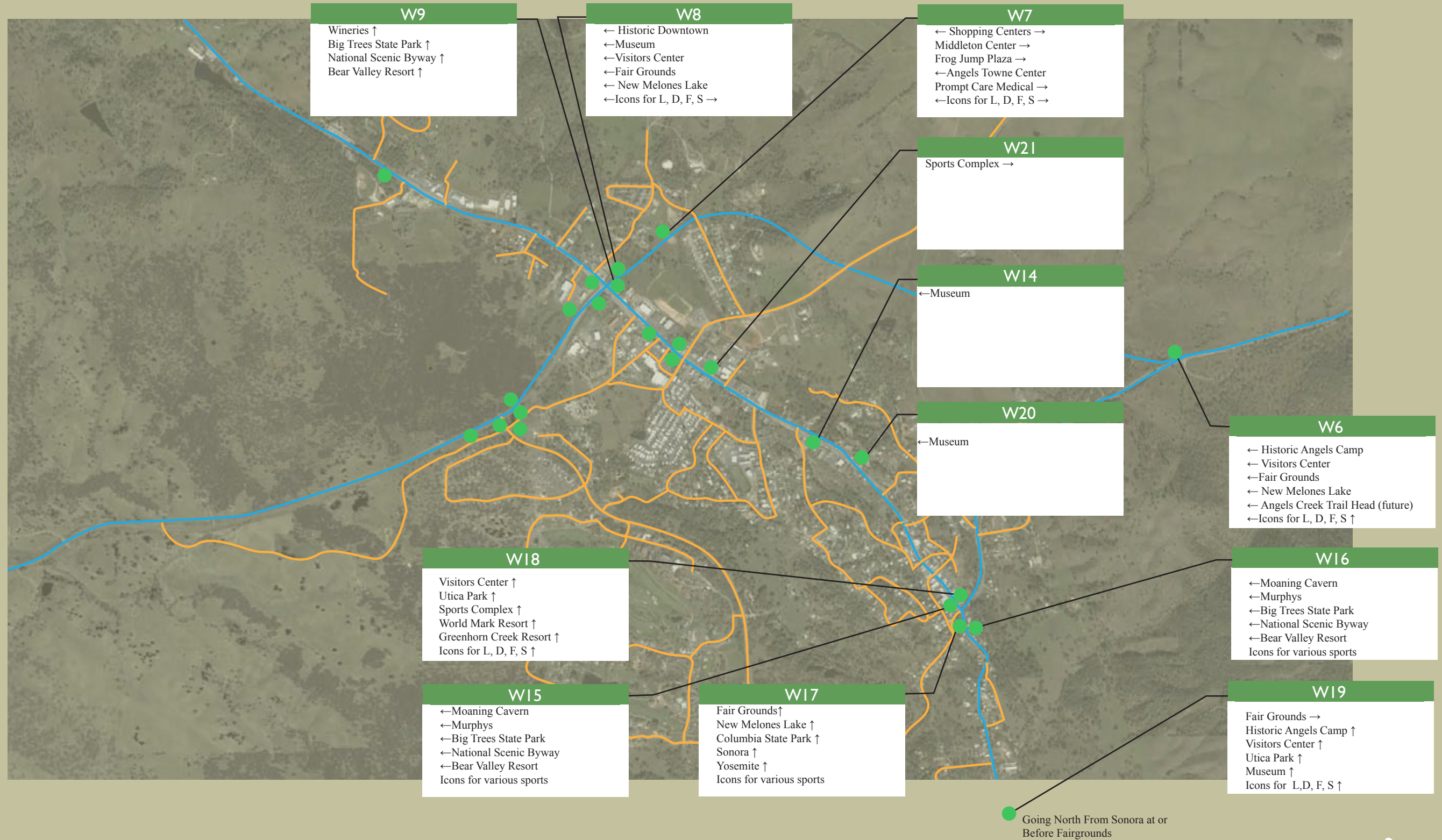
ANGELS CAMP WAYFINDING SYSTEM
SIGN LOCATIONS













ANGELS CAMP

CALIFORNIA

ANGELS CAMP WAYFINDING SYSTEM
SIGN PROGRAM

ANGELS CAMP LOGO



ANGELS CAMP BRAND COLORS



BROWN RUST EVERGREEN SAND WHITE CHARCOAL BLACK

GRAPHICS ARE FROM "BRAND & IDENTITY STANDARDS MANUAL"

ANGELS CAMP FONTS

Gill Sans Regular
ABCDEFGHIJKLMNOPQRSTUVWXYZ
abcdefghijklmnopqrstuvwxyz
123456789 !@#\$%^&*

Gill Sans Bold
ABCDEFGHIJKLMNOPQRSTUVWXYZ
abcdefghijklmnopqrstuvwxyz
123456789 !@#\$%^&*

Gill Sans Italic
ABCDEFGHIJKLMNOPQRSTUVWXYZ
abcdefghijklmnopqrstuvwxyz
*123456789 !@#\$%^&**

Gill Sans Bold Italic
ABCDEFGHIJKLMNOPQRSTUVWXYZ
abcdefghijklmnopqrstuvwxyz
123456789 !@#\$%^&*

Section 2: Font and Colors

Clarendon Roman
ABCDEFGHIJKLMNOPQRSTUVWXYZ
abcdefghijklmnopqrstuvwxyz
123456789 !@#\$%^&*

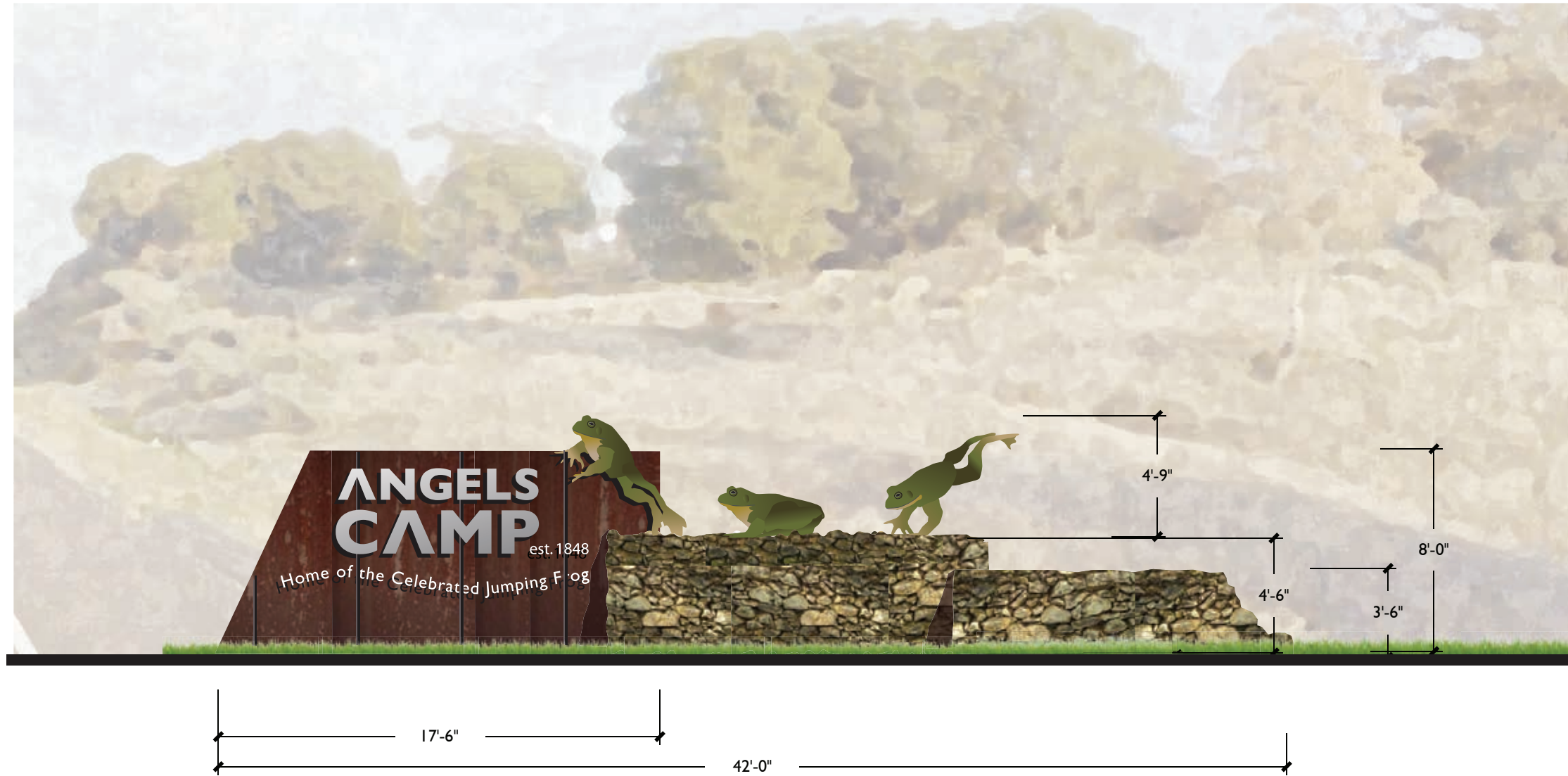
Clarendon Bold
ABCDEFGHIJKLMNOPQRSTUVWXYZ
abcdefghijklmnopqrstuvwxyz
123456789 !@#\$%^&*

ITC Garamond Std
ABCDEFGHIJKLMNOPQRSTUVWXYZ
abcdefghijklmnopqrstuvwxyz
123456789 !@#\$%^&*

ITC Garamond Std Bold
ABCDEFGHIJKLMNOPQRSTUVWXYZ
abcdefghijklmnopqrstuvwxyz
123456789 !@#\$%^&*

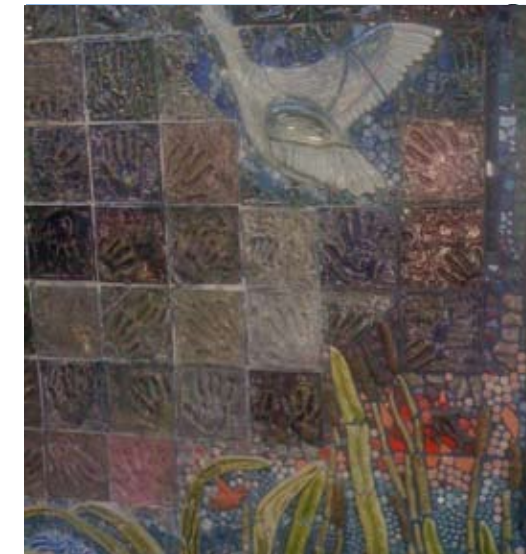
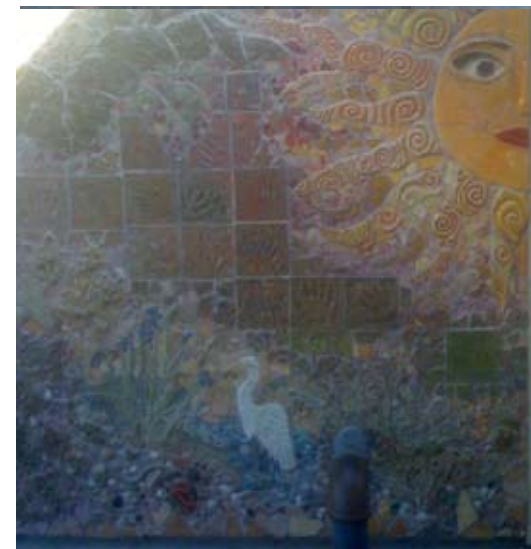
ITC Garamond Std Light Italic
ABCDEFGHIJKLMNOPQRSTUVWXYZ
abcdefghijklmnopqrstuvwxyz
*123456789 !@#\$%^&**

GRAPHICS ARE FROM "BRAND & IDENTITY STANDARDS MANUAL"

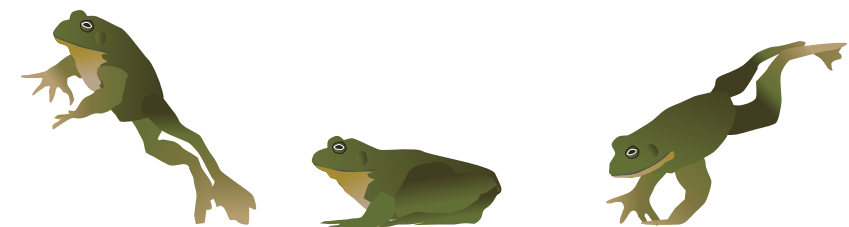


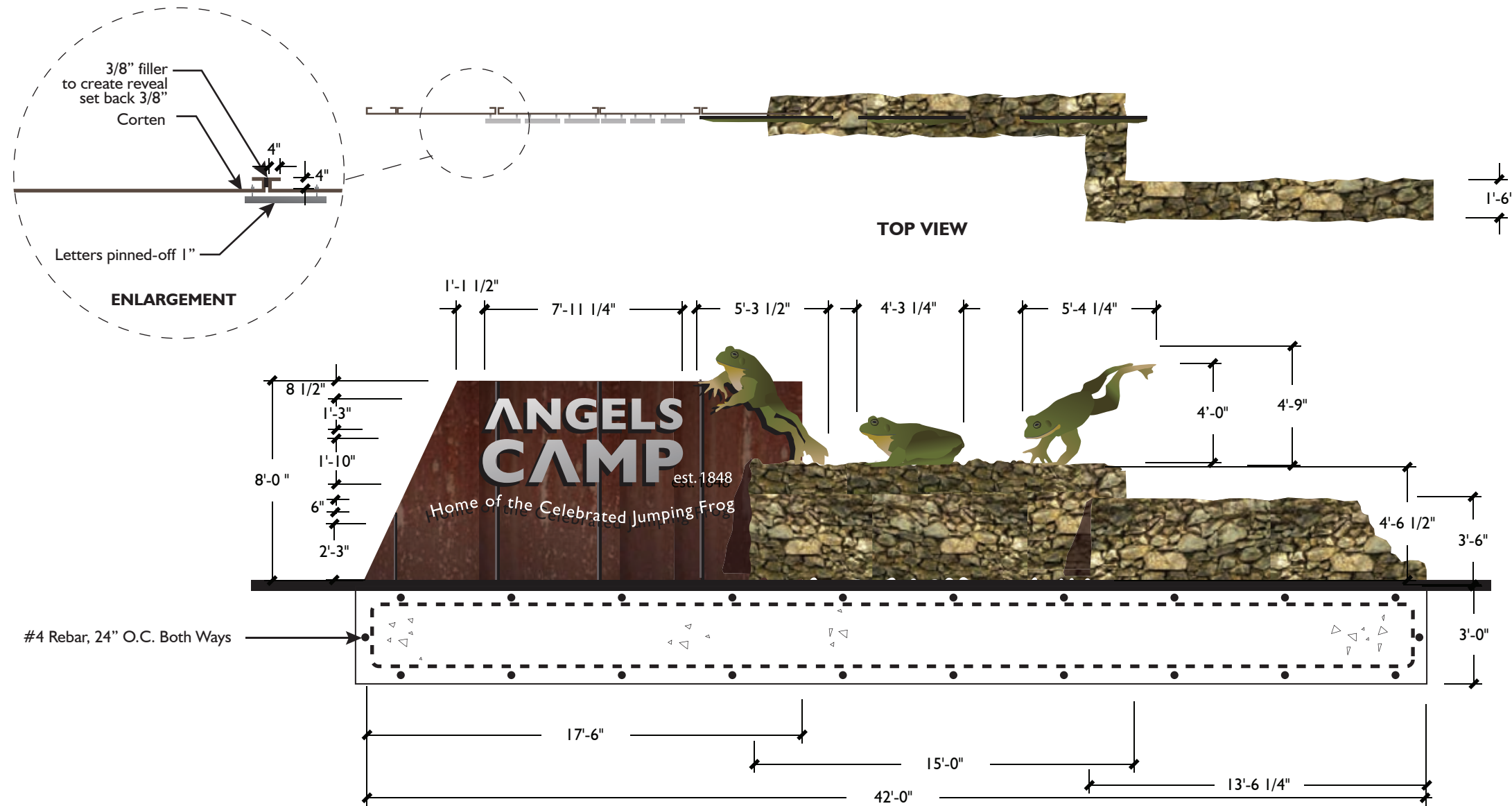
Ma ENTRY MONUMENT
FRONT VIEW
SCALE: 3/16" = 1'-0"





Ma CERAMIC FINISH SAMPLES FOR FROGS





Ma **ENTRY MONUMENT**
FRONT VIEW
SCALE: 3/16" = 1'-0"

- NOTES:
1. Details are for information purposes only and are not for construction.
 2. Structural engineer to review all dimensions, footings and reinforcements.
 3. Panel is 16 gauge Cor-Ten steel with panel sections turned in 90 degrees.
 4. Frogs are 1/4 steel cut-outs with a lip around the perimeter, ceramics epoxied over.
 5. Letters are fabricated brushed individual aluminum letters, 1 1/2" thick, pinned off 1". Bead blast edges.
 6. Stone is dry-stacked to emulate existing 'mining talus' historic walls in Angels Camp. Shorter wall length varies according to terrain.
 7. Estimated probable cost: \$35,000, not including solar lighting. Using local fabricators will decrease cost.





PHOTOSIMULATION at LOCATION Ma1

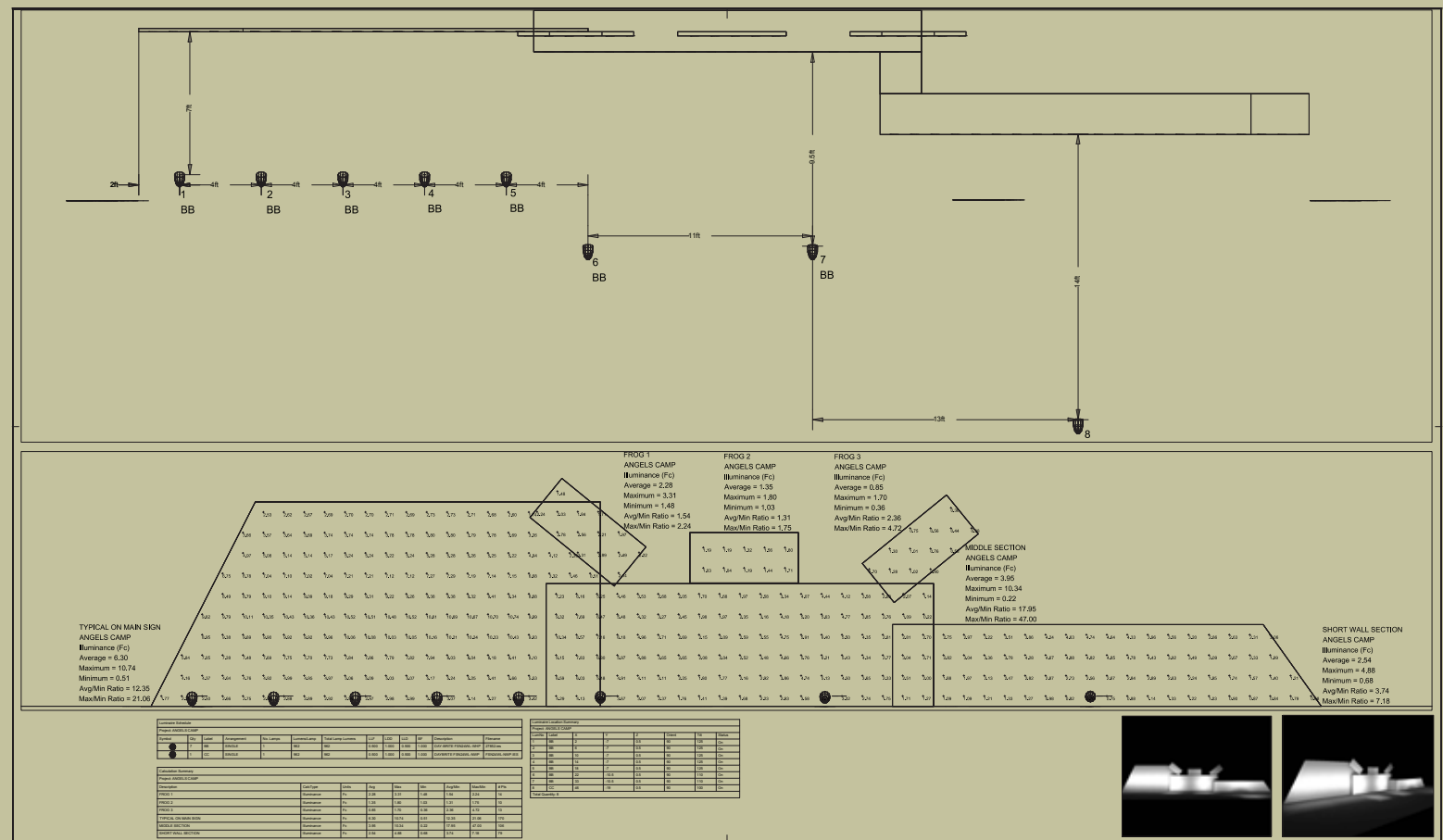


PHOTOSIMULATION at LOCATION Ma2

Ma ENTRY MONUMENT PHOTOSIMULATION



Ma ENTRY MONUMENT - BLACK AND WHITE PAPER MOCK-UP AT LOCATION Ma1
(WITHOUT 3'-6" WALL EXTENSION ON RIGHT SIDE)

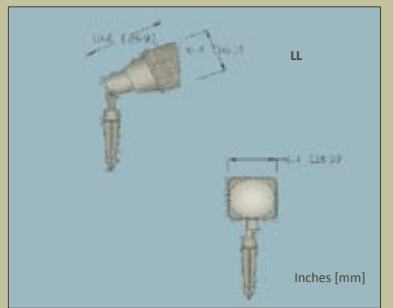


LLF/LLS - Flag and Landscape Lighting System



SolarOne's® Flag and Landscape light is available with a wide beam flood light pattern suitable for sign lighting or a narrow beam pattern suitable for flag and accent lighting.

The system includes solar panel, adjustable panel mounting system, adjustable weatherproof cast aluminum light fixture, high-efficiency LED lamp, NEMA 3R battery enclosure, 55 to 116 amp-hour sealed battery, and SO-Bright™ Max Power Tracking Lighting Controller with remote control. The power package mounts to a short 2.5in pole, which is included.



Standard Configurations

Series	Lamps	Driver	Control(s)	Voltage	Panel(s)	Mounting	Battery	Enclosure	Pole Fitting	Finish	Options
LL-1HL600-MCD-MPT-12V-P30-TP-B63A-ES1				12 V	P130	TP	-	-	-	-	-
LL-1HL600-MCD-MPT-12V-P50-TP-B118CA-EM1				12 V	P50	TP	-	-	-	-	-
LL-1HL600-MCD-MPT-12V-P80-TP-B118CA-EM1				12 V	P80	TP	-	-	-	-	-
LL-1HL600-MCD-MPT-12V-P130-TP-2B118CA-EL2				12 V	P130	TP	-	-	-	-	-
LL-2HL600-2MCD-MPT-12V-P30-TP-B63A-ES1				12 V	P30	TP	-	-	-	-	-
LL-2HL600-2MCD-MPT-12V-P50-TP-B118CA-EM1				12 V	P50	TP	-	-	-	-	-
LL-2HL600-2MCD-MPT-12V-P80-TP-B118CA-EM1				12 V	P80	TP	-	-	-	-	-
LL-2HL600-2MCD-MPT-12V-P130-TP-2B118CA-EL2				12 V	P130	TP	-	-	-	-	-
LL-3HL600-3MCD-MPT-12V-P30-TP-B63A-ES1				12 V	P30	TP	-	-	-	-	-
LL-3HL600-3MCD-MPT-12V-P50-TP-B118CA-EM1				12 V	P50	TP	-	-	-	-	-
LL-3HL600-3MCD-MPT-12V-P80-TP-B118CA-EM1				12 V	P80	TP	-	-	-	-	-
LL-3HL600-3MCD-MPT-12V-P130-TP-2B118CA-EL2				12 V	P130	TP	-	-	-	-	-
LL-4HL600-4MCD-MPT-12V-P30-TP-B63A-ES1				12 V	P30	TP	-	-	-	-	-
LL-4HL600-4MCD-MPT-12V-P50-TP-B118CA-EM1				12 V	P50	TP	-	-	-	-	-
LL-4HL600-4MCD-MPT-12V-P80-TP-B118CA-EM1				12 V	P80	TP	-	-	-	-	-
LL-4HL600-4MCD-MPT-12V-P130-TP-2B118CA-EL2				12 V	P130	TP	-	-	-	-	-

SolarOne Solutions, Inc. ©2009 www.solarone.net

LL SPECv2.2 | Flag/Landscape Lighting

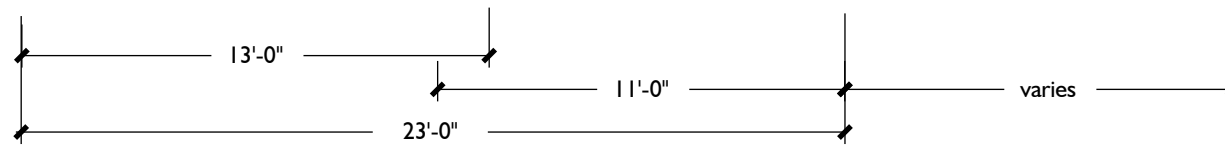
Ma LIGHTING CALCULATIONS USING SOLAR LIGHTING

CUT SHEET FOR SOLAR LIGHTING

NOTES:
 COST: (2011) \$8,700 FOR MATERIALS ONLY



TOP VIEW



NOTE:
See Entry Monument Details for additional information.

Mb ENTRY MONUMENT - SECONDARY
FRONT VIEW
SCALE: 3/16" = 1'-0"





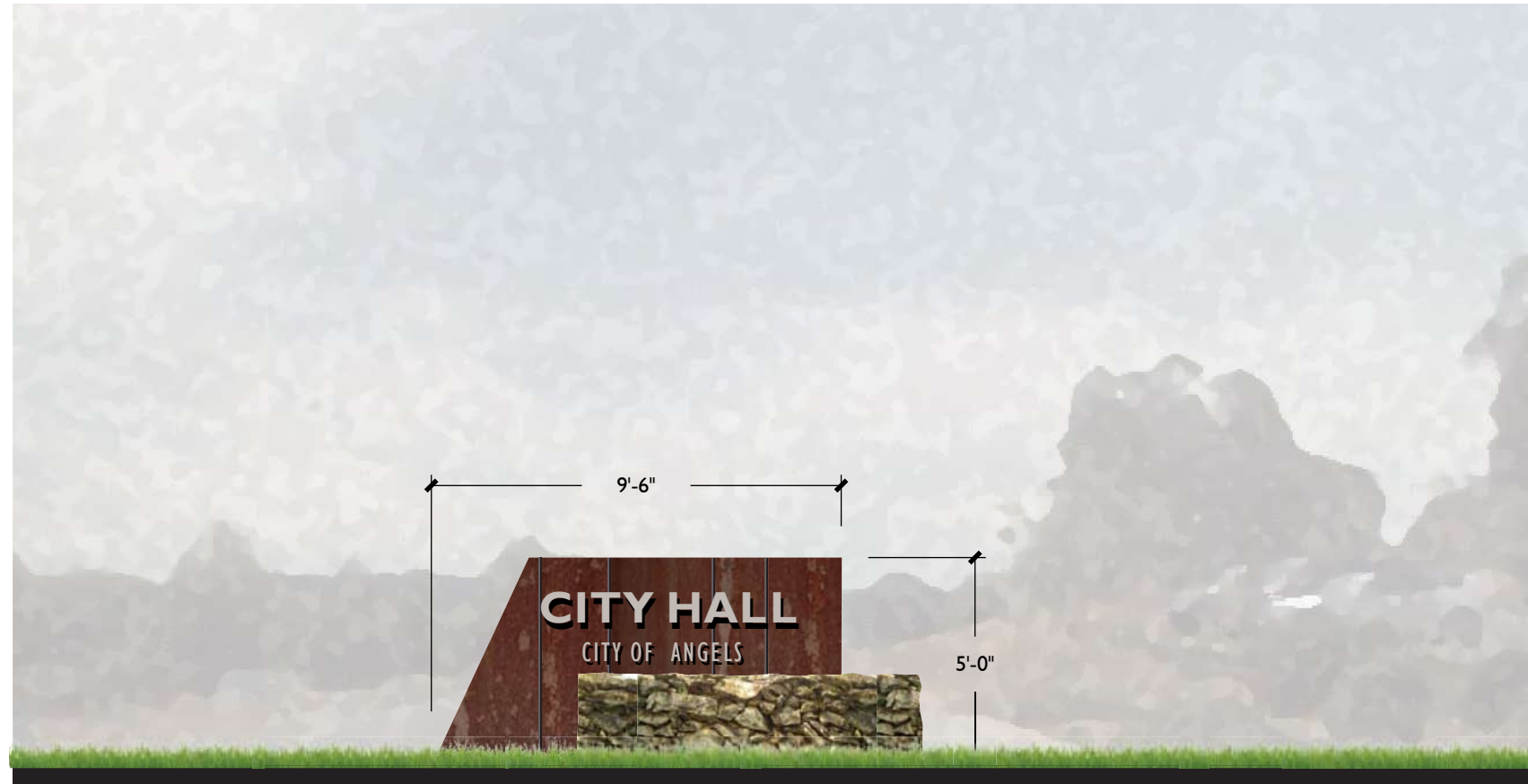
PHOTOSIMULATION: ENTRY MONUMENT AT VALLECITO ROAD ALONG CREEK

Mb

ENTRY MONUMENT PHOTOSIMULATION



TOP VIEW



NOTE:
See Entry Monument Details for additional information.

ID FACILITY IDENTIFICATION

FRONT VIEW

SCALE: 1/4" = 1'-0"



NOTE:
See Entry Monument Details for additional information.

ID FACILITY IDENTIFICATION
FRONT VIEW
SCALE: 1/4" = 1'-0"



WAYFINDING ICONS

PARKING ICONS



SAMPLE LAYOUT FOR:

W2

SAMPLE LAYOUT FOR:

W21

SAMPLE LAYOUT FOR:

W9

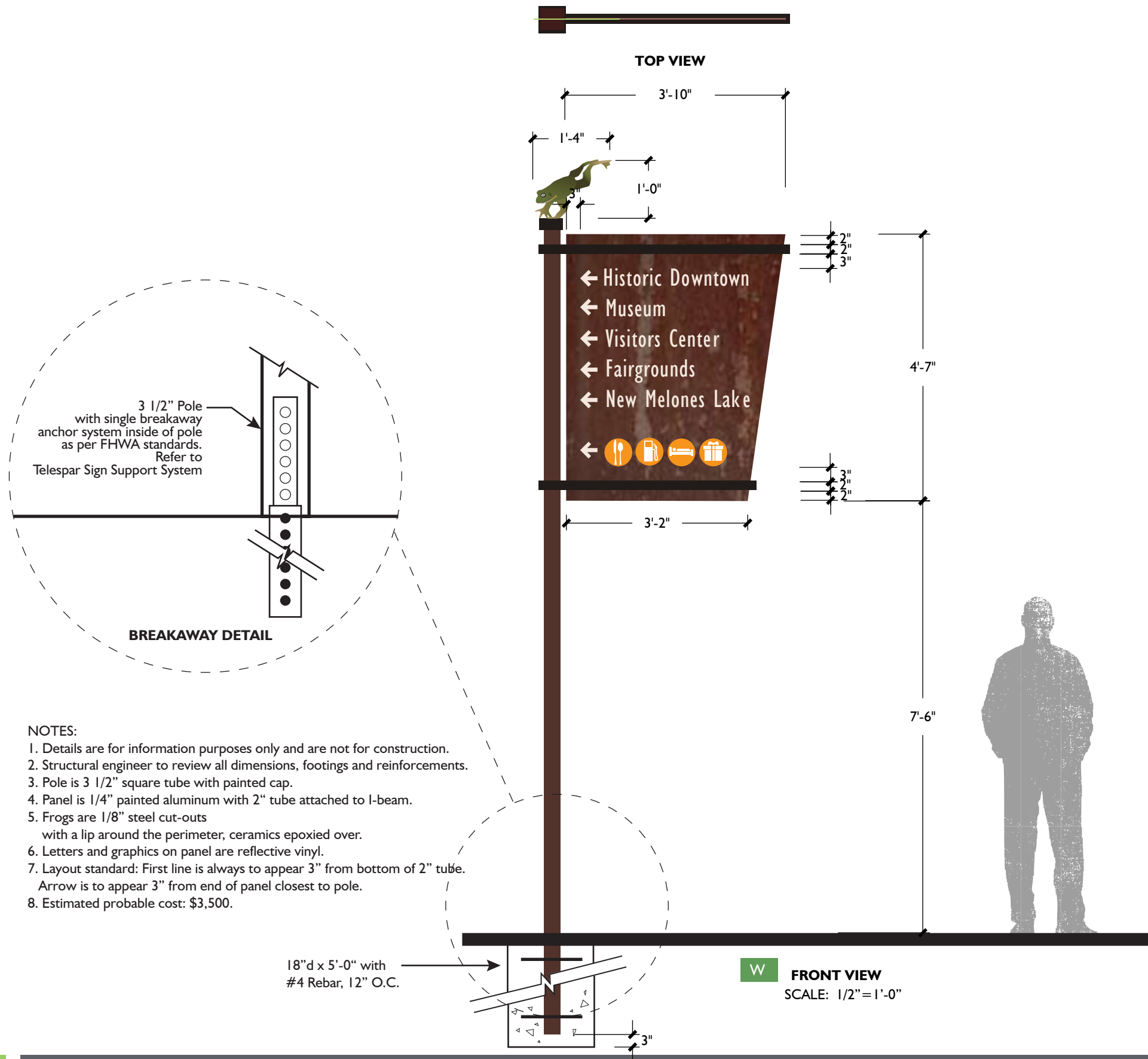
SAMPLE LAYOUT FOR:

W8

W

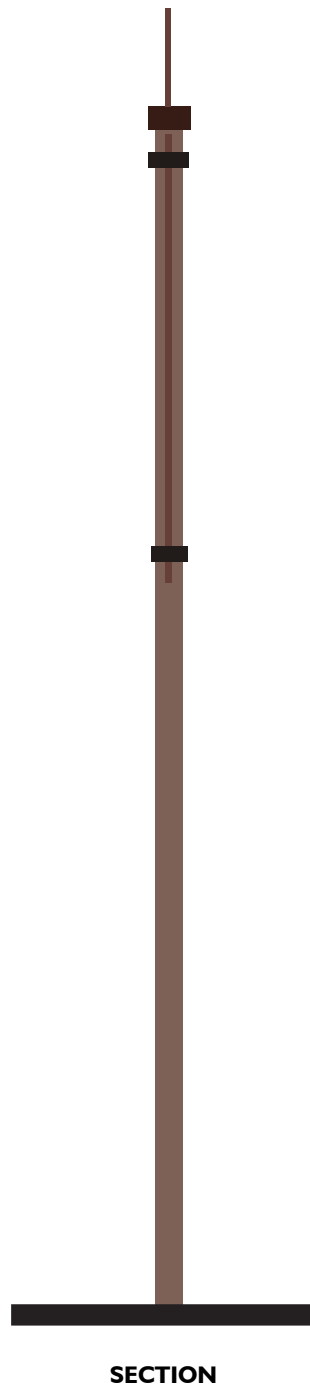
WAYFINDING
FRONT VIEW

SCALE: 1/4" = 1'-0"



NOTES:

1. Details are for information purposes only and are not for construction.
2. Structural engineer to review all dimensions, footings and reinforcements.
3. Pole is 3 1/2" square tube with painted cap.
4. Panel is 1/4" painted aluminum with 2" tube attached to I-beam.
5. Frogs are 1/8" steel cut-outs with a lip around the perimeter, ceramics epoxied over.
6. Letters and graphics on panel are reflective vinyl.
7. Layout standard: First line is always to appear 3" from bottom of 2" tube.
Arrow is to appear 3" from end of panel closest to pole.
8. Estimated probable cost: \$3,500.





TOP VIEW

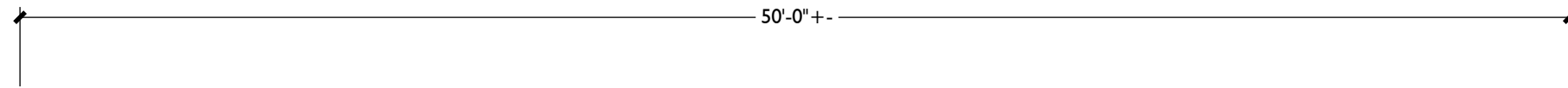


G HISTORIC DOWNTOWN GATEWAY
FRONT VIEW
SCALE: 3/16" = 1'-0"

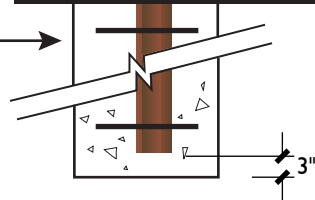




TOP VIEW

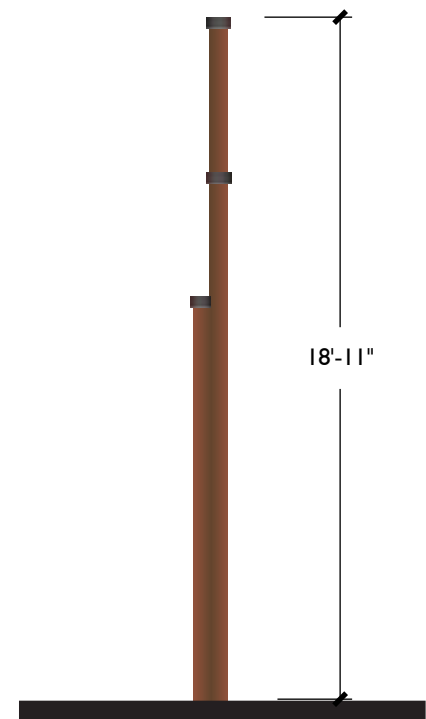
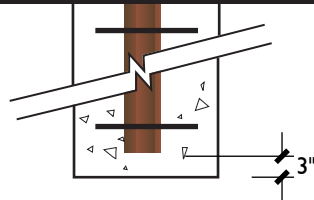


24" d x 6'-0" with #4 Rebar, 12" O.C.



Mb

FRONT VIEW



SECTION

NOTES:

1. Details are for information purposes only and are not for construction.
2. Structural engineer to review all dimensions, footings and reinforcements.
3. Vertical poles are 3 - 6" Cor-Ten steel tubes with 8" square cap.
4. Panel is 1/4" painted aluminum with 1/8" fabricated aluminum letters - 1" thick.
5. 3/8" braided stainless steel wire spans across from vertical pole to vertical pole.
6. Double sided sign.





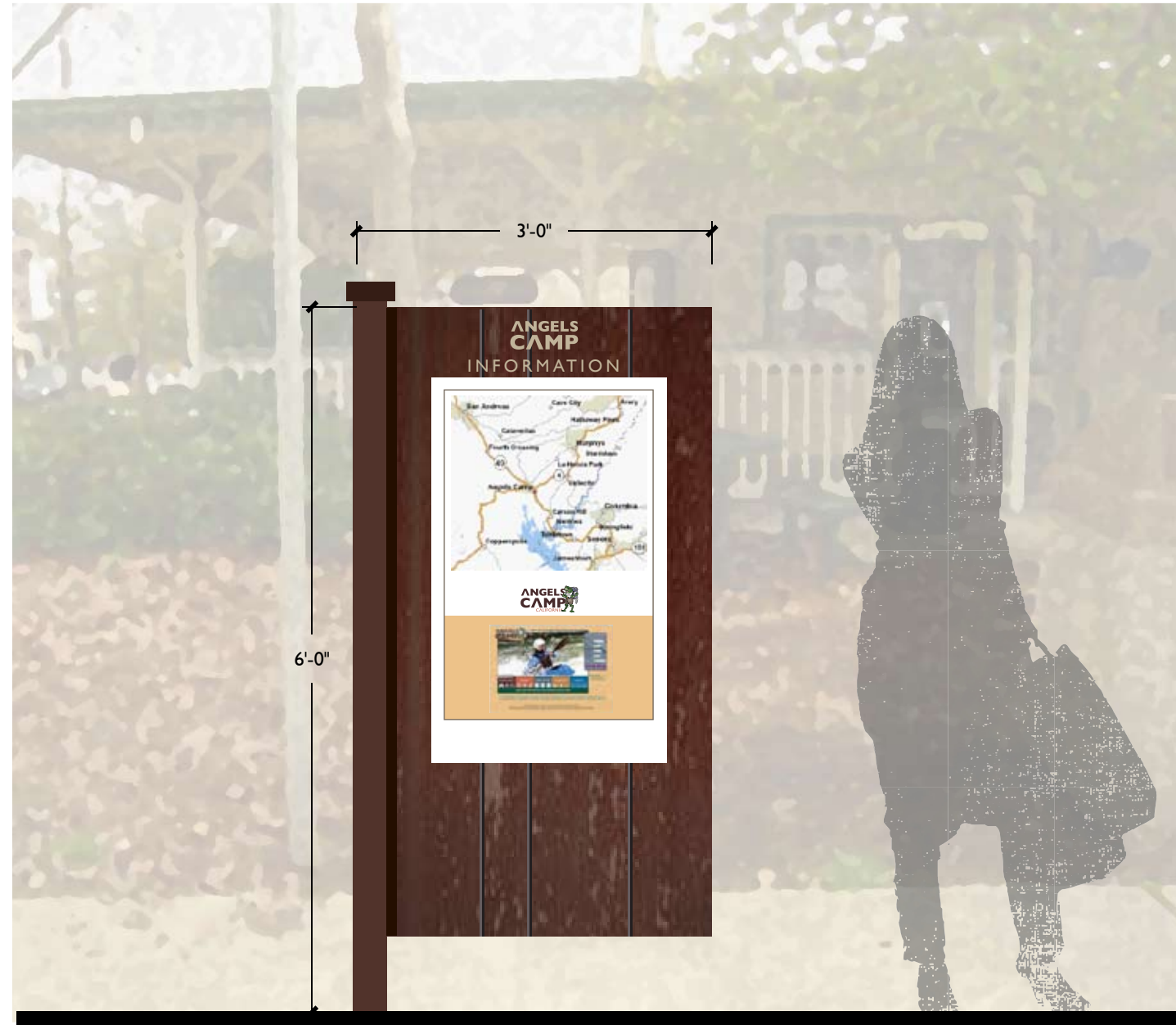
BANNER IN PLACE



WITHOUT BANNER

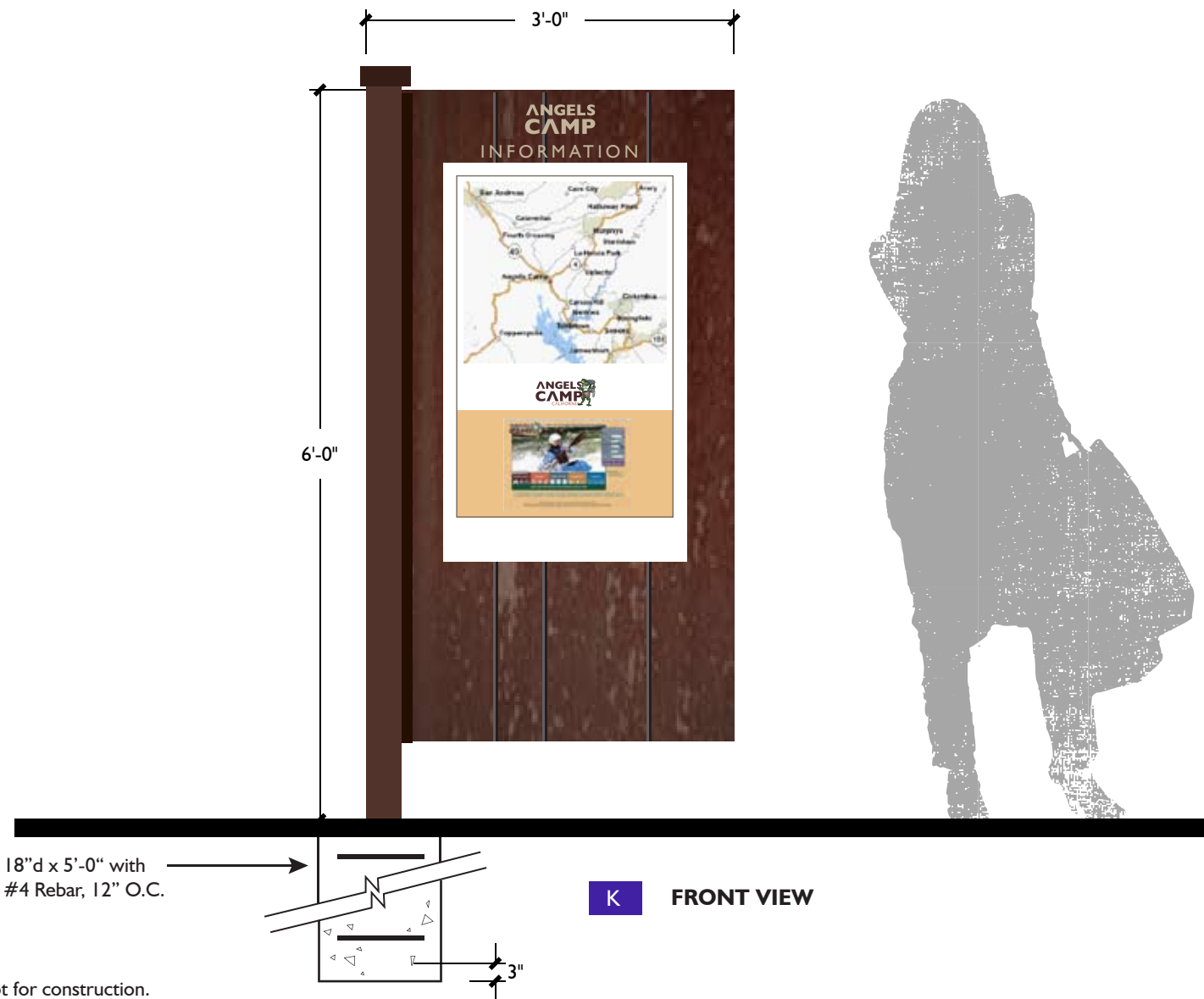
NOTE:
See Historic Downtown Gateway Details for additional information.

GATEWAY ARCH FOR UTICA PARK
FRONT VIEW
SCALE: 3/8" = 1'-0"



K KIOSK
FRONT VIEW
 SCALE: 3/16" = 1'-0"





18" d x 5'-0" with #4 Rebar, 12" O.C.

K FRONT VIEW

SECTION

NOTES:

1. Details are for information purposes only and are not for construction.
2. Structural engineer to review all dimensions, footings and reinforcements.
3. Panel is 3/16" fabricated aluminum, painted or 3M exterior vinyl with Cor-Ten image.
4. "Angels Camp Information" Graphics are vinyl. Map graphics are 3M exterior grade printed vinyl over 1/4" aluminum.
5. Double sided sign.



VIEW FROM SIDEWALK

NOTE:

1. If sign is in planted area, height clearance need not be 7'-6"

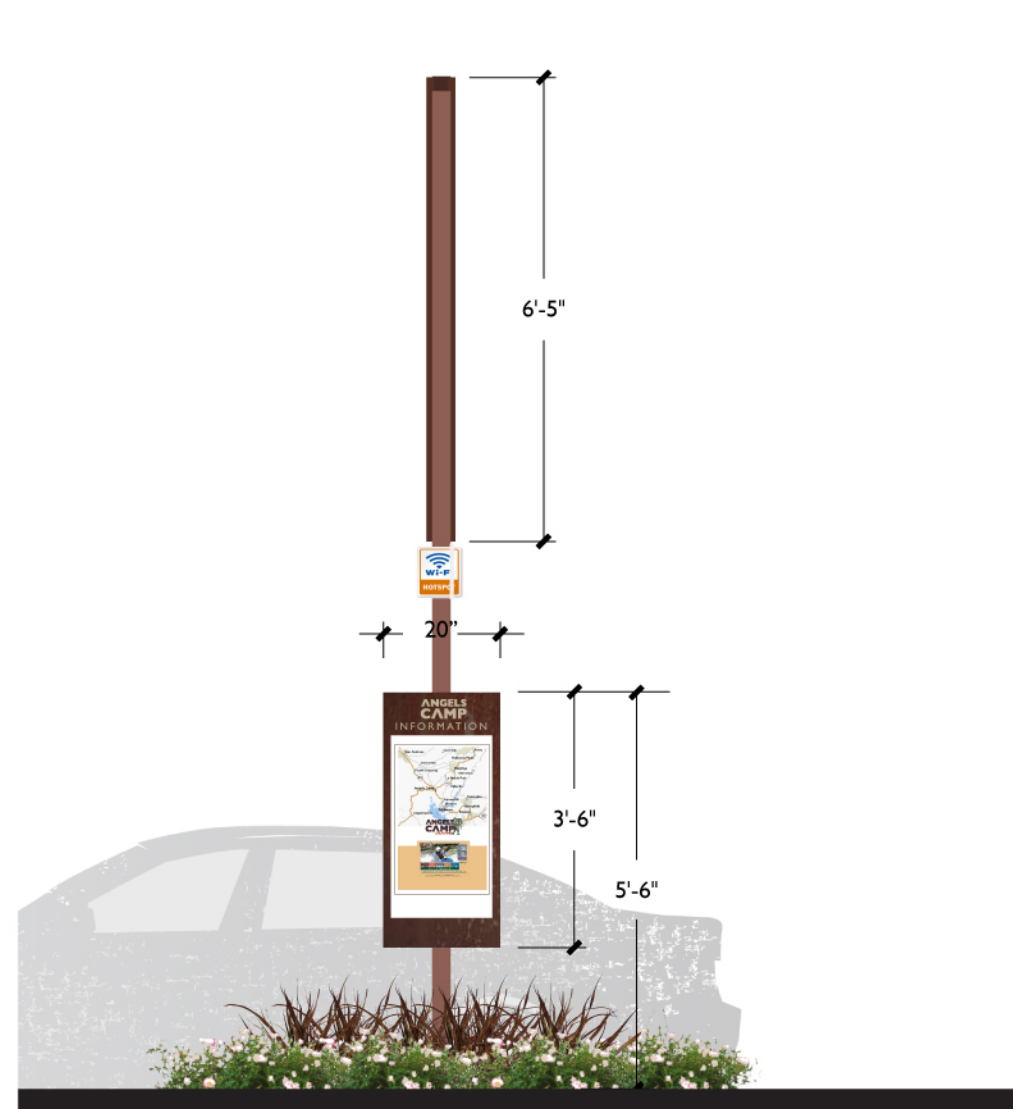


VIEW FROM STREET

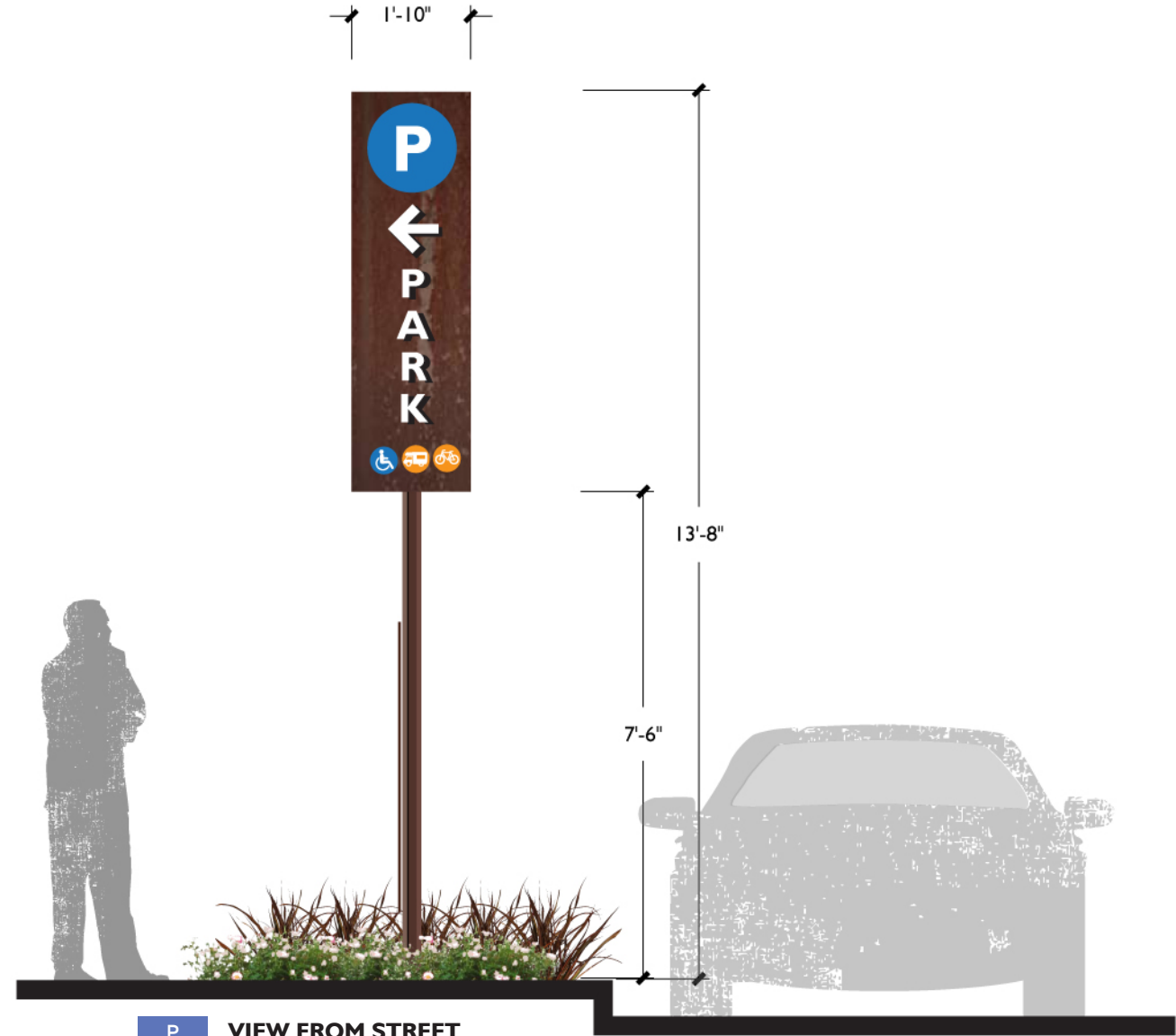
P PARKING SIGN

PK PARKING SIGN WITH KIOSK

FRONT VIEW
SCALE: 3/8" = 1'-0"



P VIEW FROM SIDEWALK



P VIEW FROM STREET

NOTES:

1. Details are for information purposes only and are not for construction.
2. Structural engineer to review all dimensions, footings and reinforcements.
3. Map panel is 3/8 aluminum, painted, or 3M exterior vinyl.
4. Parking directional panel is 3/8" aluminum panel, painted, or 3M exterior vinyl with Cor-ten image
5. Letters and graphics on parking directional panel are reflective vinyl.
6. Pole is 3 1/2" square tube.
7. See brakeaway detail from wayfinding sign.
8. Double sided sign.





W

P

PARKING SIGN & WAYFINDING PANEL - BLACK AND WHITE PAPER MOCK-UP

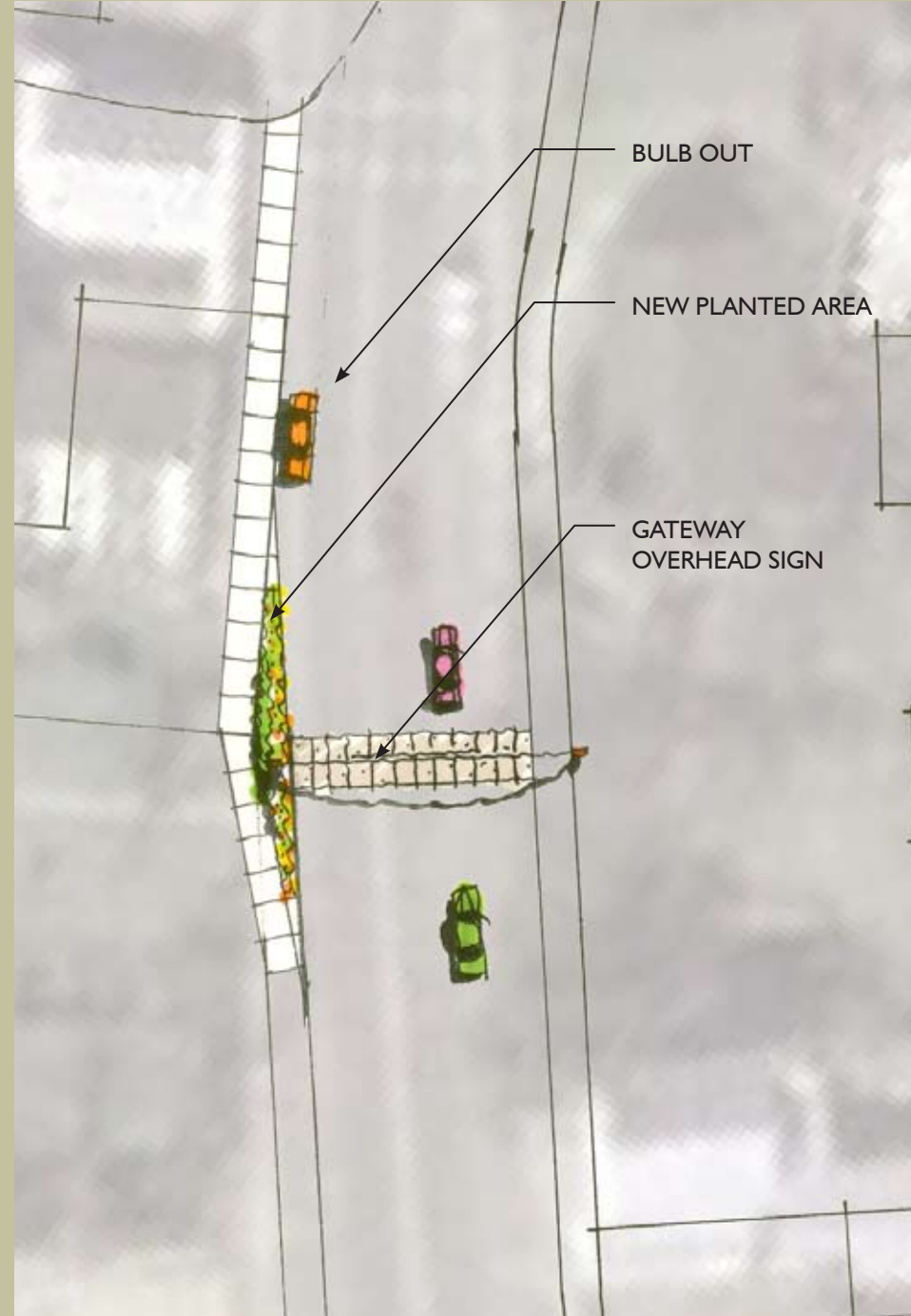
(STUDY SHOWED THAT PARKING PANEL AND WAYFINDING PANEL NEEDED TO BE INCREASED BY 20%)



ENCOURAGE RETAILERS TO DESIGN UNIQUE, BOLD, HANDCRAFTED BLADE SIGNS OF DIFFERENT SHAPES AND SIZES.



**ANGELS
CAMP**
CALIFORNIA



- BULB OUT WITH PLANTING, TYR.
- COLORED STAMPED CONCRETE
- BULB OUT WITH PLANTING & PARKING SIGN.

ZONE A

ZONE B



ZONE C



ZONE D