

Washburn Rural High School Theatre Presents

Fiddler on The Roof



February 15–17 at 7 pm
February 18 at 2 pm
2024

Based on Sholem Aleichem stories by special permission of Arnold Perl
Book by JOSEPH STEIN, Music by JERRY BOCK, Lyrics by SHELDON HARNICK
Originally produced on the New York Stage by Harold Prince
Directed & Choreographed by JEROME ROBBINS
Presented through special arrangement with Music Theatre International (MTI)

Director's Note

FIDDLER ON THE ROOF is a truly classic piece of theatre. It seems every other person I've told about this show has an experience to share of when they first saw it or played a role in a production of it. It is truly a universal story that everyone can relate to in a way, as a parent, as a child, or as someone who feels disenfranchised. In a time of great division, I love most of all that this show has the power to remind us that at the end of the day, much of the human experience is shared.

While the themes and characters may be relatable, though, this is particularly a tale of the Jewish experience. In these turbulent times, I encourage you to be curious, to be a listener, to learn what voices like Sholem Aleichem have to share. His Tevye stories, along with the art of Marc Chagall which we are displaying throughout the show, provide rich insight to the lives of Jewish people around the globe whose stories do not always get told. We are grateful and honored to be part of a long tradition of performing this story, and so very glad you have come to hear it.

Setting

1905, the eve of the Russian Revolutionary Period

Village of Anatevka

The Pale of Settlement, western Russia

Musical Numbers

ACT I

Tradition.....Tevye, Company
Matchmaker.....Tzeitel, Hodel, Chava
If I Were a Rich Man.....Tevye
Sabbath Prayer...Tevye, Golde, Company
To Life.....Tevye, Lazar, Company
Tevye's Monologue.....Tevye
Miracle of Miracles.....Motel
The Dream.....Tevye, Golde, Company
Sunrise, Sunset...Tevye, Golde, Perchik, Hodel, Company

ACT II

Now I Have Everything.....Perchik
Tevye's Rebuttal.....Tevye
Do You Love Me?.....Tevye, Golde
The Rumor.....Yente, Company
Far From the Home I Love.....Hodel
Chava Sequence.....Tevye
Anatevka.....Company

There will be a 15 minute intermission between Acts.

Cast

Tevye – Griffin Reiff

Golde – Marriana La Mantia

Tzeitel – Addie Resch

Hodel – Jenna Jensen

Chava – Holly Sorrenti

Sphrintze – Meadow Cunningham

Bielke – Genevieve Miller

The Fiddler – M. Timberlake

Motel – Koby Kirk

Perchik – Cade Nelson

Fyedka – Weston Widman

Yente – Kailer Megrail

Lazar Wolfe – Aiden Olson

Innkeeper – Braylon Badger

Mendel – Owen Tremblay

Rabbi – Harrison Snethen

Avram – Max McKibben

Shaindel – Miriam Smith

Yussel – Jordan Brown

Beggar – Julian Torres

Grandma Tzeitel – Dillyn

Fager

Dream Rabbi – Chase

Hastings

Fruma Sarah – Josie

Mitchell

Constable – Austin

Casebeer

Russian Soldiers:

Beckham Carr

Milo Douglas

Cody Ingenthron (soloist)

Emilee Stimpfle

Isaiah Varella

Ensemble:

Maddy Bauer

Cody Clingenpeel

Madison East

Corinne Fullmer

Cambria Hall

Bailey Harding

Addisyn Hummell

John Kirsch

Jamison Krentz

Annie Lightcap

Shamonique Marsh

Tillie McIvain

Maggie Morse

Mikayla Mullins

Liana Murphy

Gunes Okten

Haley Reiff

Production Team

Director: Maeghan Bishop

Technical Dir./Scene Design: Nick Beasley

Music Director: Ben Holcomb

Choreographer: Alex Castaneda

Costume Design: Linnea Hoyos

Orchestra Conductor: Melissa Lambotte

Stage Manager/Light Design: Emma May

Assistant Stage Manager: Kylie Kirk

Sound/Poster Design: Owen Tremblay

Program/Projections: Maeghan Bishop

Social Media Mgr: Addie Resch

Lobby Display: Tillie McIvain, Josie

Mitchell, Addie Resch

Crew

Lightboard Operator: Gabe Fawl

Microphone Operator: E. Elliott

Sound FX & Projections Op: Sevyn Combs

Spotlights: Aiden Garcia, Rain Gonzalez

Costumes/Makeup:

Ashlynn Kolbaba

Light Caton

Victor Hawkinson-Penny

Jackie Knochenmus

Morgan Sheddan

Shift Crew:

Preston Schulmeister

Alec Greene

Savannah Nelson

Aster Hogan

Kerystyn Glotzbach

Jacob Lawhon

Jess Cooper

Sean Davidson (Fly Operator)

Eli Van Fossen (Props)

Pit Orchestra

Ananya Anaparthi - Violin

Kyellie Arb - Trumpet

Lizzie Birch - Oboe/English horn

Morgan Boose - Cello

Enzo Cabrilo - Bass

Macey Cathcart - Viola

Mackenzie Dial - Clarinet

Addison Edgar - Euphonium

Kaylee Fernandez - Violin

Finley Guccione - Cello

Max Gutierrez - Clarinet

Jackson Harader - Bass Clarinet

Phoebe Harrison - Alto Saxophone

Ben Holcomb - Piano

Aedan Huebner - Bass

Kwame James - Percussion

Peter Johnston - Bass

Blake Kelly - Tuba

Lucas Langley - Trumpet

Emma Lucht - Cello

River McCoy - Violin

Blaine McVey - French Horn

Abby Poage - Percussion

Cami Ross - Flute

Meagan Sanderson - Bass

Luke Scheibmeir - Percussion

Zack Schneider - Guitar

Adrienne Spain - Viola

Reese Taylor - Tenor Saxophone

Pierson Tiller - Tuba

Aryan Verma - Viola

Elizabeth White - Violin

Marc Chagall Artwork

A painting by this Jewish artist inspired the title of this show, and his experiences immigrating from western Russia to Europe and the U.S. are reflected in an impressive collection of artwork. To learn more, explore at <https://www.guggenheim.org/artwork/artist/marc-chagall>

Green Violinist 1924

The Wedding 1944

Vitebsk 1909

Houses at Viciebsk 1917

Over the Town 1918

Rain 1911

The Soldier Drinks 1912

The House in Grey 1917

Remembrance 1914

Apothecary in Vitebsk 1914

Over Vitebsk 1914

The Fiddler 1913

The Dream 1920

In the Snow 1022-1930

I and the Village 1911

© 2023 Artists Rights Society (ARS), New York / ADAGP, Paris
Solomon R. Guggenheim Museum, New York

Special Thanks To:

Stephanie Schuttera

Jacqueline Lightcap

Sara McIlvain

Debbie Reiff

Danielle Casebeer

Vici Sanders-Newman

Andy Brienzo

Jewish Community Center, Olathe

Topeka Civic Theatre

WRHS Journalism

WRHS Business Dept.

Topeka High School Theatre

Ed Raines, WRHS Principal

WRHS Administration and Faculty

WRHS Custodial Staff

Jennifer Sheets-Parman

Jessica Roberts, USD437 Communications

USD437 Administration

Families of our cast, crew, and pit musicians

Travis Youngblood, TradePost

Entertainment

Topeka Habitat for Humanity ReStore

 Habitat for Humanity®

ReStore®

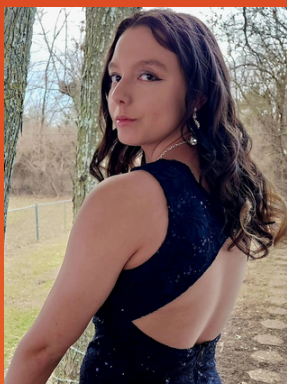
Senior Bios



This is Mackenzie Dial's first year being in pit orchestra, but she has been a part marching band all of high school. She is so thankful for all the memories she's made through band, and plans to continue participating in marching band at KU next year, while majoring in nursing.



Koby Kirk is a senior, though this is his second year at Waru. He is involved with 3 choirs at WRHS, including TG. He will study music education at Washburn University next year. He thanks you all for seeing this show.



Emma May is the Stage Manager and Lighting Designer for Fiddler on the Roof. She has absolutely fallen in love with this show and can't wait to share it with everyone. She plans to attend Wichita State to major in Secondary Education - Earth and Space Sciences with a minor in Theater.



Josie Mitchell has been involved with theatre since she was three years old when her grandparents began involving her in theatre camp. Josie has loved theatre ever since! Most recently she has been awarded a 'superior' rating for duet acting with Miriam Smith at the Kansas Thespian Festival.



Maggie Morse has been in three shows at WRHS, including Fiddler On The Roof. She is very happy and feels lucky to be a part of the production, and do it all with an amazing cast and crew.



Cade Nelson is the vice president of Theatre Club. He has appeared in numerous productions at various venues, notably playing Wadsworth in Clue on the WRHS stage, and bringing Frankenstein to Kansas Thespian Festival as Victor Frankenstein. He also participates in forensics, choir, Model UN, and more.



Griffin Reiff has been involved in theatre at Washburn Rural all 4 years of high school, and is currently the Theatre Club president. Theatre has given him an outlet to explore himself both as a performer and as a person. He is very honored to be telling Tevye's story.

Support WaRu Theatre Students!



Students who receive the highest rank of “Superior” ratings by competing at the Kansas Thespian Festival are eligible to compete at the annual International Thespian Festival.

This year, we have 4 students qualified to compete at ITF!

- Tillie McIlvain: Musical Solo
- Owen Tremblay: Sound Design
- Josie Mitchell & Miriam Smith: Duet Acting

Your donations will make it possible for these students to represent WRHS at the national level, as well as fund Theatre Club activities for many more of our students.

Thank you for supporting educational theatre experiences for youth to develop collaborative, creative, interpersonal, and problem-solving skills!

DONATE NOW!