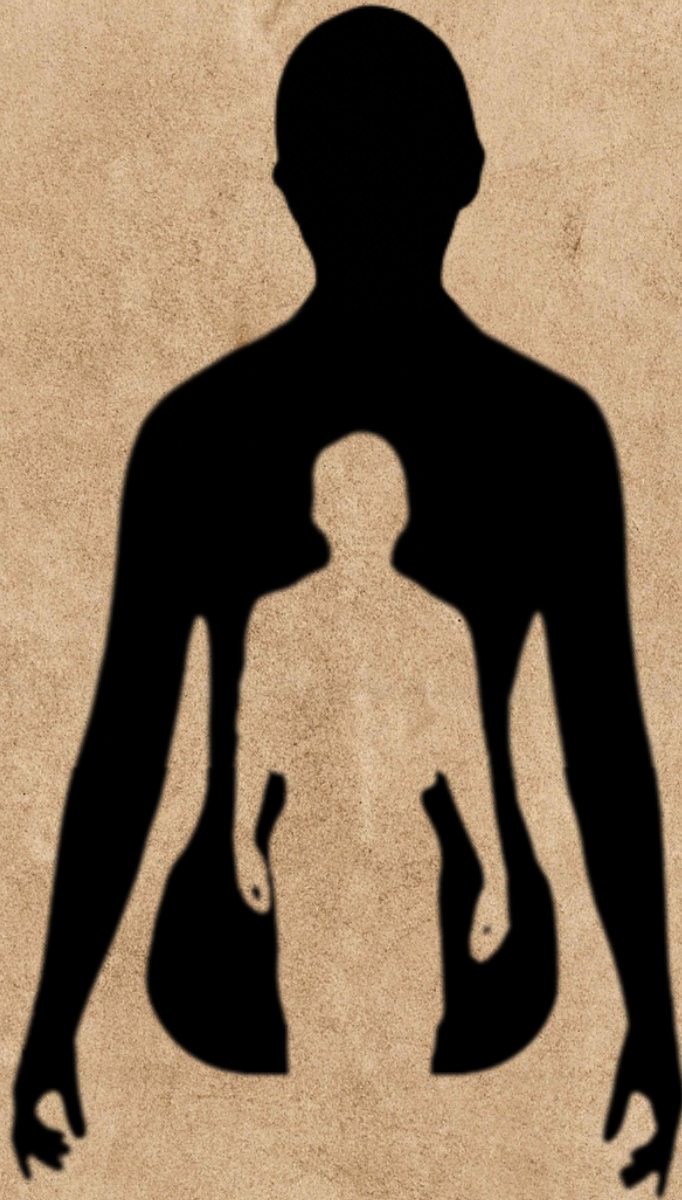


**WARU**  
THEATRE



# FRANKENSTEIN

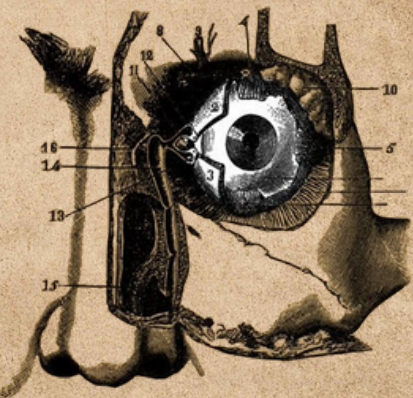
A PLAY BY NICK DEAR

BASED ON THE MARY SHELLY NOVEL



# "All I ask is the possibility of love!"

Childlike in his innocence but grotesque in form, Frankenstein's bewildered creature is cast out into a hostile universe by his horror-struck maker. Meeting with cruelty wherever he goes, and increasingly desperate and vengeful, he determines to track down his creator and strike a terrifying deal.



## Creative Team

Director ----- Matthew Rosebrook

Technical Director ----- Nick Beasley

Costume Designer ----- Linnea Hoyos

Stage Manager/Sound Designer/Composer ----- Owen Tremblay

Light Designer ----- Emma May

Choreographers ----- Haley Reiff & Miriam Smith







# Director's Note

While on a trip to the real-life city of Geneva, Mary Shelley, then 18-years old, began writing her career defining novel, *Frankenstein; or, The Modern Prometheus*. The story of the novel's inception involves five travelers, a rainy afternoon, and a competition to see who could write the best ghost story. It soon became clear that Shelley's story of a scientist's attempt to play God was going to reign victorious.

*Frankenstein* continues to be read and studied over 200-years after its inception for its still relevant themes of nature vs. nurture and commentary on humanity's complex relationship with innovation. Those themes, however, have often been ignored in the pop culture view of Frankenstein's creation as a towering, green Halloween monster.

This 2011 adaptation attempts to bring those themes back to the forefront by doing what other adaptations have not attempted before: giving voice to The Creature. As Frankenstein's playwright, Nick Dear, asked in a 2011 interview, "How does the experiment feel about being experimented on?" Experiencing the play from the perspective of The Creature, instead of Victor Frankenstein, audiences are encouraged to empathize with a character often referred to as a "monster."

Same as those who come in contact with The Creature, it is often our human reaction to reject what we do not understand or find it impossible to see others' humanity. I implore you to let our production's message of acceptance motivate us towards replacing judgement with the offer of love and compassion for those unlike ourselves.

**There will be a 10 minute  
intermission**

**Please remember to turn off all electronics.  
Filming and photography of any kind are strictly prohibited.  
Thank you.**





# Bios

Miriam Smith (The Creature) is a JUNIOR here at WRHS. She has appeared in roles on the WARU stage ranging from CONRAD in Much Ado About Nothing to the TRAINER in Elephant's Graveyard, to even playing Flute in the pit of 9 to 5. Outside of school she enjoys dancing and competing in forensics. She is honored to embody The Creature.

Cade Nelson (Victor Frankenstein) is a senior and is the vice president of WRHS Thespians. Cade has appeared in numerous roles at WRHS; notably, Wadsworth (Clue On Stage), Dogberry (Much Ado About Nothing), and Isaac Jaggard (The Book of Will). Outside of theatre he is the WARU Forensics president, a member of The Freshman Class, and loves to exercise and juggle.

Griffin Reiff (De Lacey) is a senior at Washburn Rural. He has been involved in theatre all 4 years of high school and is currently Theatre Club President. You might recognize him as Franklin Hart from 9 to 5 or Benedick from Much Ado. De Lacey has been a challenging role and he is proud to be part of a stellar cast.

Noah Hart (Felix) is currently a senior and has been doing theatre since his freshman year. He is the secretary for the high school theatre club, and is excited to be able to help share the message of Frankenstein. We all hope you enjoy this great play!





# Bios (cont.)



Maggie Morse (Agatha) has taken many theatre classes while attending Washburn Rural. Though she appeared in the senior one act, Our Place, this will be her first time in a larger stage production. She is excited for the audience to see a deeper side of the story and to be playing such a fiery character that is Agatha. She is also excited to be done with the stones..so so many stones.

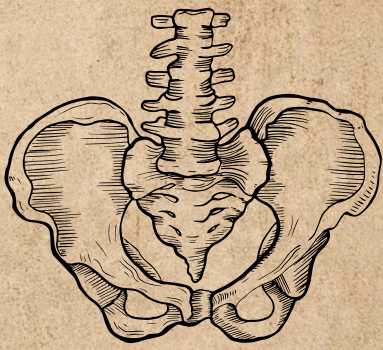
Meadow Cunningham (William Frankenstein) is a Senior and was "Full of Beans" when casted in Frankenstein. She has been involved in theatre since her freshman year this being her fourth production. She has enjoyed every moment from start to finish and is grateful for the family she has made

Haley Reiff (Female Creature) has loved working on Frankenstein and is excited for everyone to see the show! This show has been an immense challenge for her as she has the greatest amount of lines she has ever had. Haley is a sophomore and looks forward to filling her year with what she loves the most: performing!

Weston Widman (Ewan) has loved being a part of Frankenstein! Acting and performing on stage has always been a great passion of his so being a part of this play has been such an incredible experience for him. This is only his second year of high school so he is very excited for all the shows he will be a part of in the future!





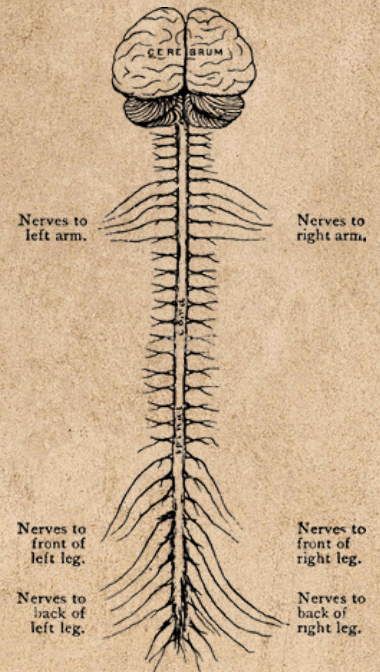
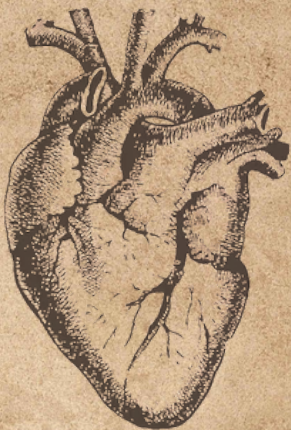


# Bios (cont.)

Sarai Smith (Ensemble) comes to FRANKENSTEIN as ensemble after assisting with Costumes for DRACULA and The Little Mermaid at Enloe Theater in North Carolina.

Koby Kirk (Rob) is a senior, this is his second year of theater and fourth year of choir. He also participates in theater at TCT. You can usually find him in the choir room. He's very excited to "Rab it up!"

Owen Tremblay (Stage Manager/Sound Designer and Operator/Composer) is a JUNIOR, WRHS Theatre Club's Tech Representative, and Co-volunteer Chair for Helen Hocker's Bath House program. Along with Washburn, he has participated in both Helen Hocker Theatre and Topeka Civic Theatre productions. Outside of theatre, Owen enjoys playing the mellophone, French horn, trumpet, and composing music. Owen would like to thank Mr. Rosebrook and Mr. Beasley for entrusting him with so much creative liberty for such a beautiful show.





# Special Thanks

*Families of Cast and crew  
wrhs journalism  
wrhs business dept.  
wrhs custodians  
wrhs faculty, staff, & admin  
Jennifer Sheets-parman  
USD437 Administration  
Ben Holcomb  
Maeghan Bishop*



**Topeka Blueprint Co., Inc.**

## **Upcoming Productions**

**February 15-17: Fiddler on the Roof**

**April 11-13: The Complete Works of William Shakespeare (Abridged)**