

SEPTIC TANK

1600 IMPERIAL GALLONS (LOW)
(7200 LITRES)

A & B

PRECAST MANUFACTURING LIMITED

R.R.#5, BELLEVILLE, ONTARIO, K8N 4Z5
Phone: (613) 962-9111 Fax: (613) 962-4686
Toll Free: 1-800-267-2851

SPECIFICATION DETAILS

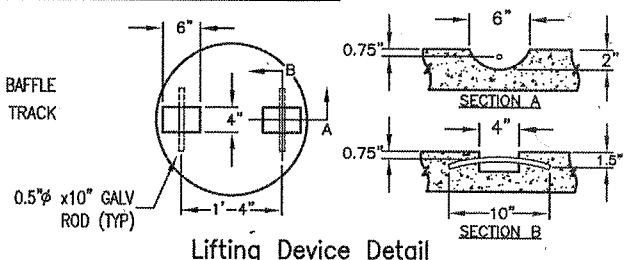
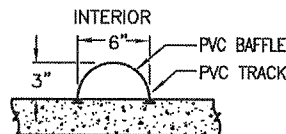
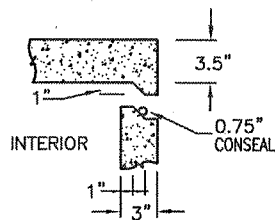
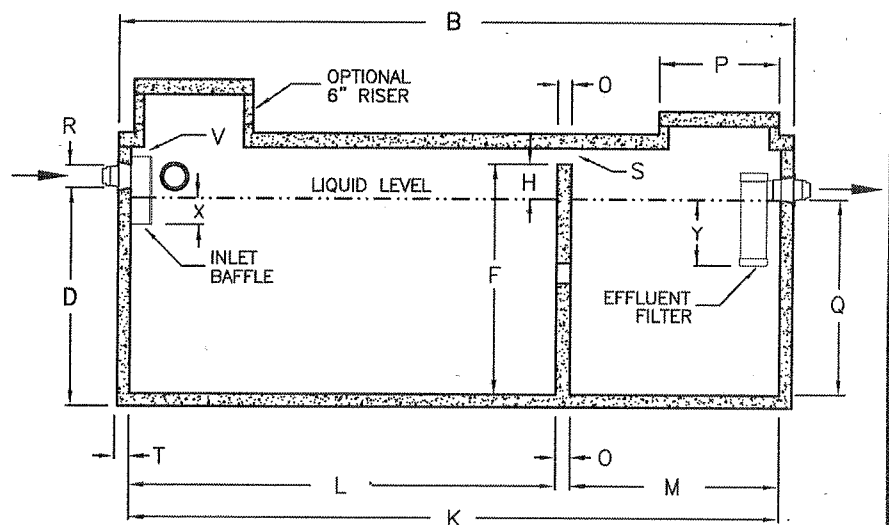
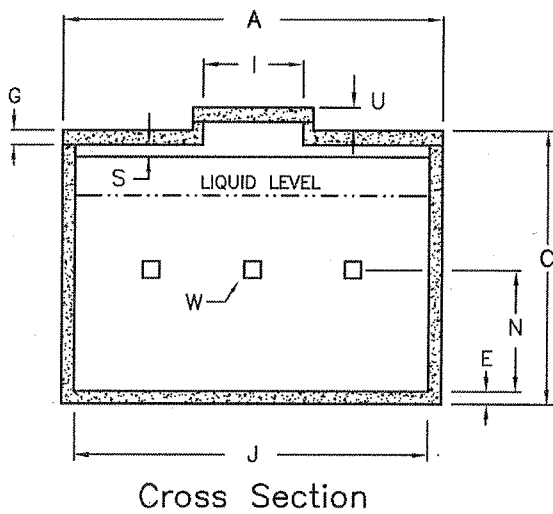
Concrete Strength: 4641 PSI (32 MPa)

Weight:	Top	Bottom	Total
	5100	10700	15800 lb
	(2310)	(4860)	(7170)kg

Reinforcing: Lid - 8 pcs @ 10M rebar longitudinal
 - 17 pcs @ 10M rebar transverse
 Sides - 3 pcs @ 10M rebar longitudinal
 - 6 pcs @ 10M rebar transverse
 - Top rebar to be continuous c/w
 12" x 12" 10M rebar corner splicers
 Bottom - 3 pcs @ 10M rebar longitudinal
 - 11 pcs @ 10M rebar transverse

NOTES

1. Close tolerance of tongue and groove joint and a fibrous mastic sealant guarantee a solid structural and water-tight joint.
2. Concrete risers in 6" (150mm) increments are available for both access openings to allow for variable burial depths.
3. Maximum burial depth is 24" (600mm) from top of lid to finished grade. Additional reinforcing can be added to allow for deeper burials.
4. Effluent filter to be Tuf-Tite EF-6 (1500 gal/day)
5. Inlet and Outlet devices to be POLY-III CE Seals.
6. All concrete c/w 4.0 kg/m³ structural synthetic fibre



DIMENSIONAL DATA

Inches (mm)

March 20, 2019

A: Overall Width	84.0 (2133.6)	O: Thickness of Partition Wall	3.0 (76.2)
B: Overall Length	154.0 (3911.6)	P: Outside Diameter Of Risers and Lid	24.0 (609.6)
C: Overall Height	56.5 (1663.7)	Q: Top of Floor to Bottom of Outlet (Liquid Depth)	39.0 (990.6)
D: Base to Bottom of Inlet	44.5 (1130.3)	R: Diameter of Inlet and Outlet	3.0 or 4.0 (76.2 or 101.6)
E: Thickness of Base	3.5 (88.9)	S: Air Circulation Space	1.75 (44.5) 136.5 sq/in (880.6 sq/cm)
F: Floor to Top of Partition Wall	46.75 (1187.45)	T: Exterior Wall Thickness	3.0 (76.2)
G: Thickness of Lid	4.5 (114.3)	U: Top of Lid to Top of Access Cover	4.5 (114.3)
H: Scum Capacity	7.75 (196.85)	V: Top of Inlet Baffle to U/S of Top	1.0 (25.4)
I: Inside ϕ of Risers & Access Hole	20.0 (508.0)	W: Total of 3 Flow Throughs	75 sq/in (484 sq/cm)
J: Inside Base Width	78.0 (1981.2)	X: Inlet Liquid Penetration	3.5 (88.9)
K: Inside Base Length	148.0 (3759.2)	Y: Outlet Liquid Penetration	12.6 (320.0)
L: Large Compartment	97.0 (2463.8)	Length of Inlet Baffle	12.0 (304.8)
M: Small Compartment	48.0 (1219.2)	Length of Effluent Filter	20.5 (520.7)
N: Floor to ϕ of Flow Through Holes	23.0 (584.2)		