

# SEPTIC TANK

800 IMPERIAL GALLONS (LOW)  
(3600 LITRES)

# A & B

## PRECAST MANUFACTURING LIMITED

R.R.#5, BELLEVILLE, ONTARIO, K8N 4Z5  
Phone: (613) 962-9111 Fax: (613) 962-4686  
Toll Free: 1-800-267-2851

### SPECIFICATION DETAILS

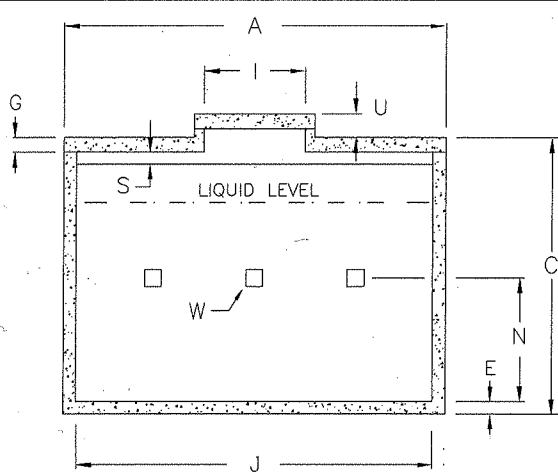
Concrete Strength: 4641 PSI (32 MPa)

Weight:	Top	Bottom	Total
	2200	6700	8900 lb.
	(1010)	(3040)	(4050) kg.

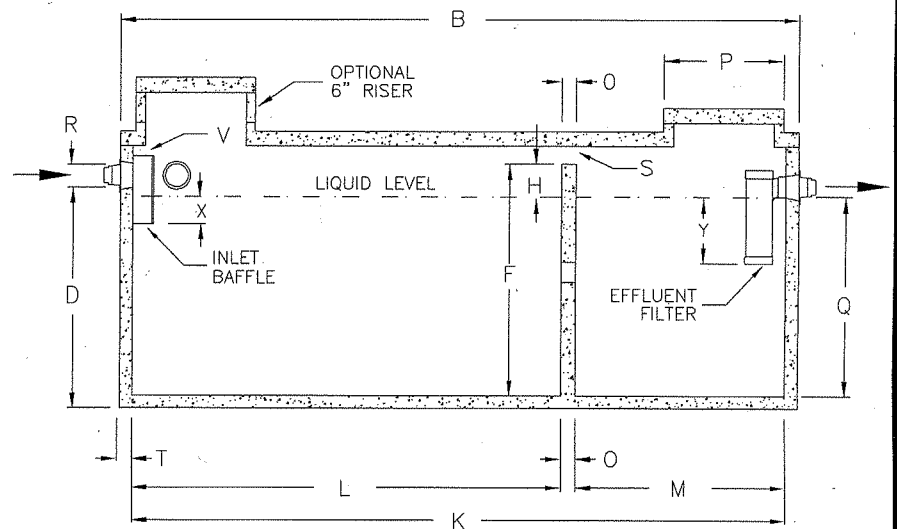
Reinforcing: Lid - 6 pcs @ 10M rebar longitudinal  
 - 8 pcs @ 10M rebar transverse  
 Sides & Bottom - Single continuous horizontal 10M rebar  
 @ top of sides c/w 12"x12" 10M rebar corner splicers

### NOTES

1. Close tolerance of tongue and groove joint and a fibrous mastic sealant guarantee a solid structural and water-tight joint.
2. Concrete risers in 6" (150mm) increments are available for both access openings to allow for variable burial depths.
3. Maximum burial depth is 24" (600mm) from top of lid to finished grade. Additional reinforcing can be added to allow for deeper burials.
4. Effluent filter to be Tuf-Tite EF-6 (1500 gal/day)
5. Inlet and Outlet devices to be POLY-III CE Seals.
6. All concrete c/w 4.0 kg/m<sup>3</sup> structural synthetic fibre



Cross Section



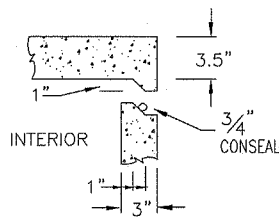
Longitudinal Section



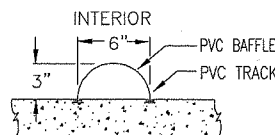
QUINTE  
CONSTRUCTION  
ASSOCIATION



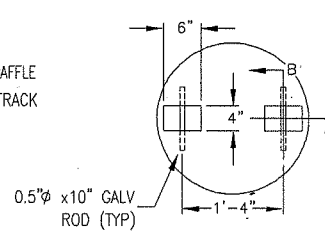
CPA  
CONCRETE  
PRECASTERS  
ASSOCIATION  
OF ONTARIO



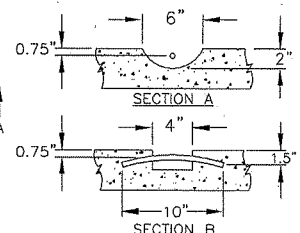
Joint Section



Baffle Detail



Lifting Device Detail



### DIMENSIONAL DATA

Inches (mm)

December 30, 2020

A: Overall Width	72.0 (1828.8)	O: Thickness of Partition Wall	2.6 (65.0)
B: Overall Length	102.0 (2590.8)	P: Outside Diameter Of Risers and Lid	24.0 (609.6)
C: Overall Height	54.0 (1371.6)	Q: Top of Floor to Bottom of Outlet (Liquid Depth)	36.0 (914.4)
D: Base to Bottom of Inlet	42.0 (1066.8)	R: Diameter of Inlet and Outlet	3.0 or 4.0 (76.2 or 101.6)
E: Thickness of Base	3.5 (88.9)	S: Air Circulation Space	3.7 (93.4) 244.2 sq/in (1575.5 sq/cm)
F: Floor to Top of Partition Wall	42.3 (1074.4)	T: Exterior Wall Thickness	3.0 (76.2)
G: Thickness of Lid	3.5 (88.9)	U: Top of Lid to Top of Access Cover	5.5 (139.7)
H: Scum Capacity	6.3 (160.0)	V: Top of Inlet Baffle to U/S of Top	1.0 (25.4)
I: Inside $\varnothing$ of Risers & Access Hole	20.0 (508.0)	W: Total of 3 Flow Throughs	75 sq/in (484 sq/cm)
J: Inside Base Width	66.0 (1676.4)	X: Inlet Liquid Penetration	3.7 (94.0)
K: Inside Base Length	96.0 (2438.4)	Y: Outlet Liquid Penetration	12.6 (320.0)
L: Large Compartment	62.5 (1587.5)	Length of Inlet Baffle	12.0 (304.8)
M: Small Compartment	31.5 (800.1)	Length of Effluent Filter	20.5 (520.7)
N: Floor to $\varnothing$ of Flow Through Holes	23.0 (584.2)		