

SEPTIC TANK

800 IMPERIAL GALLONS
(3600 LITRES)

A & B

PRECAST MANUFACTURING LIMITED

R.R.#5, BELLEVILLE, ONTARIO, K8N 4Z5
Phone: (613) 962-9111 Fax: (613) 962-4686
Toll Free: 1-800-267-2851

SPECIFICATION DETAILS

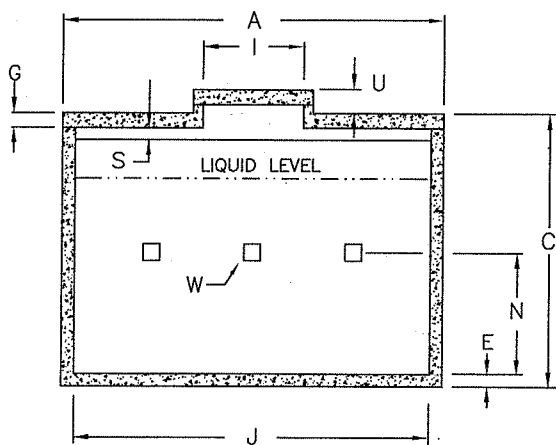
Concrete Strength: 4641 PSI (32 MPa)

Weight: Top Bottom Total
 1600 6300 7900 lb.
 (740) (2900) (3640)kg.

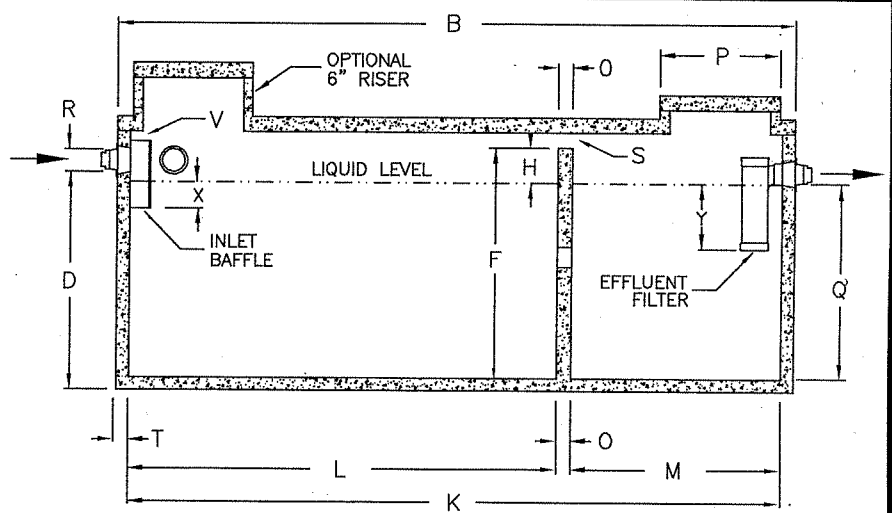
Reinforcing: Lid - 4 pcs @ 10M rebar longitudinal
 - 6 pcs @ 10M rebar transverse
Sides & Bottom - Single continuous horizontal 10M rebar
 @ top of sides c/w 12"x12" 10M rebar
 corner splicers

NOTES

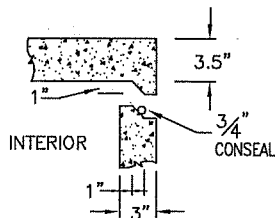
1. Close tolerance of tongue and groove joint and a fibrous mastic sealant guarantee a solid structural and water-tight joint.
2. Concrete risers in 6" (150mm) increments are available for both access openings to allow for variable burial depths.
3. Maximum burial depth is 24" (600mm) from top of lid to finished grade. Additional reinforcing can be added to allow for deeper burials.
4. Effluent filter to be Tuf-Tite EF-6 (1500 gal/day)
5. Inlet and Outlet devices to be POLY-III CE Seals.
6. All concrete c/w 4.0 kg/m³ structural synthetic fibre



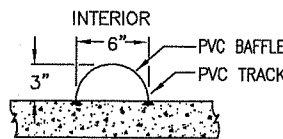
Cross Section



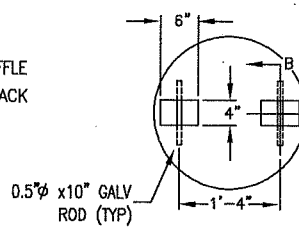
Longitudinal Section



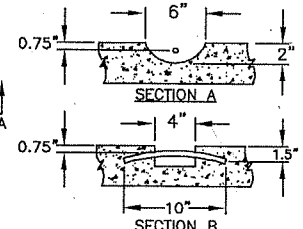
Joint Section



Baffle Detail



Lifting Device Detail



DIMENSIONAL DATA

Inches (mm)

December 30 2020

A: Overall Width	60.0 (1524.0)	O: Thickness of Partition Wall	2.6 (65.0)
B: Overall Length	90.0 (2286.0)	P: Outside Diameter Of Risers and Lid	24.0 (609.6)
C: Overall Height	65.0 (1651.0)	Q: Top of Floor to Bottom of Outlet (Liquid Depth)	49.0 (1244.6)
D: Base to Bottom of Inlet	54.5 (1384.3)	R: Diameter of Inlet and Outlet	3.0 or 4.0 (76.2 or 101.6)
E: Thickness of Base	3.0 (76.2)	S: Air Circulation Space	2.5 (63.5) 135 sq/in (871.0 sq/cm)
F: Floor to Top of Partition Wall	56.0 (1422.4)	T: Exterior Wall Thickness	3.0 (76.2)
G: Thickness of Lid	3.5 (88.9)	U: Top of Lid to Top of Access Cover	5.5 (139.7)
H: Scum Capacity	7.0 (177.8)	V: Top of Inlet Baffle to U/S of Top	1.0 (25.4)
I: Inside ϕ of Risers & Access Hole	20.0 (508.0)	W: Total of 3 Flow Throughs	75 sq/in (484 sq/cm)
J: Inside Base Width	54.0 (1371.6)	X: Inlet Liquid Penetration	3.5 (88.9)
K: Inside Base Length	84.0 (2133.6)	Y: Outlet Liquid Penetration	12.6 (320.0)
L: Large Compartment	55.0 (1397.0)	Length of Inlet Baffle	12.0 (304.8)
M: Small Compartment	27.0 (685.8)	Length of Effluent Filter	20.5 (520.7)
N: Floor to ϕ of Flow Through Holes	29.0 (736.6)		