

De Luz Rainfall, Snowfall and Floods "Snow, Dam, Flood year," Teddy Garnsey

RAINY TUESDAY — A clogged drain on Juniper St. made a large puddle to impede passing traffic during this week's storm. A total of .90 measured at the

Fire Dept. brought the season rainfall up to 18.04 inches. Terrain in the area causes varying rain totals. J.F. Rose of Pala-Temecula Rd., for instance, reported a season total of 22.6.

Rain total exceeds 1,000 inches

The engineering staff at the Fallbrook Public Utility District has made available rainfall data which shows that more than 1,000 inches of rain has fallen here since 1875.

As far as can be determined, the earlier records were kept by the Fox and White families. The reason for no record from 1905 to 1908 was a death in the family, with records resuming for 1908-09.

Later figures are credited to the U. S. Geological Survey and FPUD. The average rainfall for 91 years appears to be 16 to 17 inches.

To indicate how rainfall figures for Fallbrook may differ due to terrain and location, FPUD totaled 15.02 inches for the 1971-72 season, compared to the "official" total measured at the Fallbrook Fire Station of 11.01.

The famous flood years the old timers talk about are pretty obvious— 1883-84, 1888-89, 1915-

Year	Rain
1875-76	13.08"
76-77	13.13

77-78	21.86
78-79	16.25
79-80	11.95
80-81	5.49
81-82	13.27
82-83	12.80
83-84	42.41
84-85	11.41
85-86	21.68
86-87	14.97
87-88	23.57
88-89	31.36
89-90	13.12
90-91	17.95
91-92	21.20
93-83	22.05
93-94	10.47
94-95	10.09
95-96	15.47
96-97	18.57
97-98	8.56
98-99	13.04
99-1900	12.42
1900-01	17.55
01-02	12.32
02-03	23.49
03-04	15.00
04-05	5.25
05-08	No record
08-09	7.95
09-10	16.95
10-11	16.98

11-12	15.98
12-13	12.88
13-14	24.45
14-15	29.92
15-16	30.51
16-17	13.72
17-18	21.05
18-19	11.94
19-20	18.42
20-21	21.18
21-22	23.80
22-23	11.27
23-24	13.15
24-25	12.57
25-26	21.70
26-27	23.25
27-28	12.53
28-29	12.80
29-30	19.59
30-31	16.74
31-32	20.29
32-33	13.20
33-34	15.80
34-35	23.55
35-36	16.39
36-37	36.75
37-38	25.90
38-39	16.82
39-40	19.26
40-41	30.70
41-42	16.11
42-43	18.72

43-44	17.11
44-45	16.69
45-46	13.31
46-47	11.64
47-48	9.19
48-47	12.70
49-50	9.32
50-51	8.16
51-52	24.00
52-53	13.11
53-54	14.07
54-55	12.61
55-56	13.05
56-57	13.93
57-58	24.69
58-59	7.18
59-60	13.46
60-61	5.54
61-62	17.60
62-63	7.58
63-64	14.04
64-65	12.38
65-66	17.07
66-67	20.42
67-68	10.19
68-69	27.68
69-70	35.25
70-71	17.50
71-72	15.02
72-73	17.14
Grand total	1,604.23

67-68	19.37
'68-69	50.05
69-70	14.34
70-71	12.18
71-72	11.89
72-73	26.56
73-74	16.62
74-75	19.56
75-76	14.19
76-77	11.94

1937 10-day big heat wave
1958 38" rain and a heat wave in Oct.

Buildings:

House re-built	1953-54
Labor housing	1957
Harry's cabin	1951
Aunt Ida's (later rental)	1957

BIG THINGS:

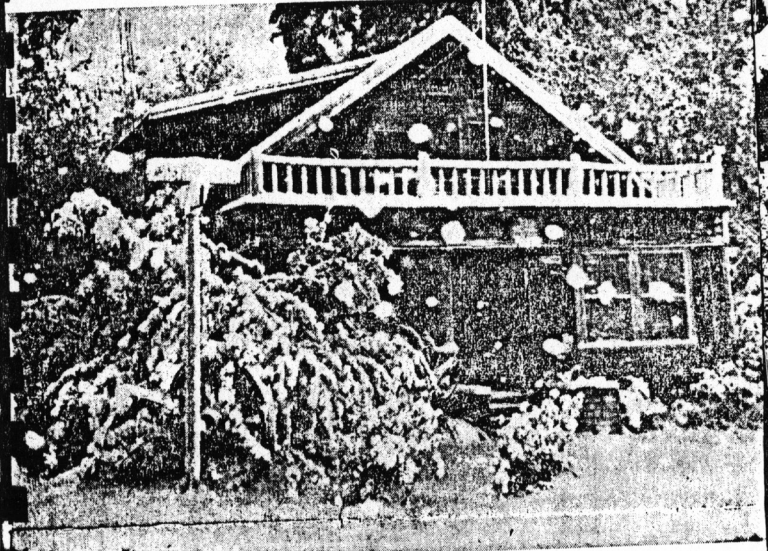
Power Major Tractor	1959
Kohler Light Plant (first electricity)	1947
Electricity SDG&E	1950

PROJECTS:

Frog Pond	1949
Tadpole Pond	1960
Silt Dam re-built	1959
3 new wells	1969
Betsy well (now Woosley)	1973
Hotsy well	1964
Cottonwood (near Scotts)	196
	1963

SNOWS: Jan. '49, 1958, Dec. 1967, Feb. 1969 (very little)

MAJOR FLOODS:	1884
	1889
	1916
	1937
	1958
	1969
	1978



Snow on vines on the flat 1949

A SOUTHERN CALIFORNIA SURPRISE—A house in the avocado community of Fallbrook in San Diego County gets a rare treatment—being decorated by a storm that dropped 3 to 4 inches of snow in area.

Chilly Winds Whip Southland; Records Set for Cold and Snow

Gales as High as 90 M.P.H. Cause Widespread Damage; More Freezing Weather and Gusts Predicted for Today

BY DICK MAIN and HENRY SUTHERLAND

Chilly, gale-force winds whipped through Southern California Wednesday, dropping temperatures to a low chance of new snow was forecast for early today by both the U.S. Weather Bureau and University of California.

Felix had just harvested a crop of milo. He and Teddy saw Calif. Holly covered with snow on their way out of the canyon to catch a plane in L. A. for Florida. They picked up this paper to show Steve.



LEFT: The Harold Griffith home as seen Monday after the first snow storm. Snow remained on the ground here until late Wednesday. RIGHT: Victor Westfall Sr. stands beside a snow laden avocado tree on the Red Mountain Ranch. Photo by V. B. Westfall, Jr.



Left: SNOW Jan. 14, 1949
Snow in 1958, looking towards Rocky Peak through the strawberry plantings on the flat.



Mr. J. M. Warner surveys trees on the Red Mountain Ranch where about six inches of snow fell. The tree beside him is one of the

Washed out railroad leads to herculean feat

By CHARLES MACKEY

In the growth of our country, as pioneers fought their way West, some of the most difficult ground was actually covered in a 40 mile stretch going east.

These miles represented the railroad track that left Oceanside, came to Fallbrook and then went through Temecula and on north.

The track was first laid in 1882, but not where the present track is now crossing Main Street and running along Alvarado to the train depot. The first rails were laid along the Santa Margarita River bed from Oceanside. The track seems to have been under water almost as much as it was usable.

The railroad track was washed out just two years after it was completed from Oceanside to Temecula. This information was verified by L. F. O'Neill who came to Fallbrook in January of 1891 and who still lives here. O'Neill and his family came here by train from San Bernardino, through Temecula and via the Santa Margarita River bed to Fallbrook.

O'Neill is said to be the last living person to travel by train from Temecula to Fallbrook because the rail was once again washed out in February of 1891.

Two or three years after the second washout, the line was rebuilt from Fallbrook to Oceanside, but was not rebuilt from here to Temecula.

The train made a daily trip between the two frontier towns. But again in 1916 during what is known as the "Big Flood" the rails were again washed out.

Deciding that the river basin route was a losing proposition, the Santa Fe Railroad rebuilt the line, but this time took to high land and built the line through what is now Camp Pendleton and the Naval Weapons Station. This was built in 1917 and is the same rail which now comes to Fallbrook.

It took some 13 months to rebuild the line, in which time the Santa Fe Train Station which now stands on Alvarado Street was constructed.

At the time of the 1916 flood Bill Angelo, Santa Fe engineer and his wife, who was the sister of L. F. O'Neill, lived in a home built in the river

basin. Their home was washed away along with the tracks, a freight house and five train cars.

Although much of the equipment at what might be termed the train station in the river valley was washed away, there was still much which was salvageable.

Then came the tremendous task of bringing the cars and equipment up from the river basin to the newly constructed track in downtown Fallbrook.

The story was told on the front page of the Fallbrook Enterprise, June 8, 1917.

"Whole Train Lifted Out of a Canyon 435 feet," the headline read.

"Four Men, Four Horses, Two Capstans and 2000 feet of Cable Break all Records by Lifting almost One-Half Million Tons a Distance of About Two Miles over 50 per cent Curves and 14 per cent Grades, the Lift Being Four-Hundred and Thirty five Feet," the sub-head continued.

The story went on to say that W. O. Basore and Sons, of Pasadena, housemovers, were

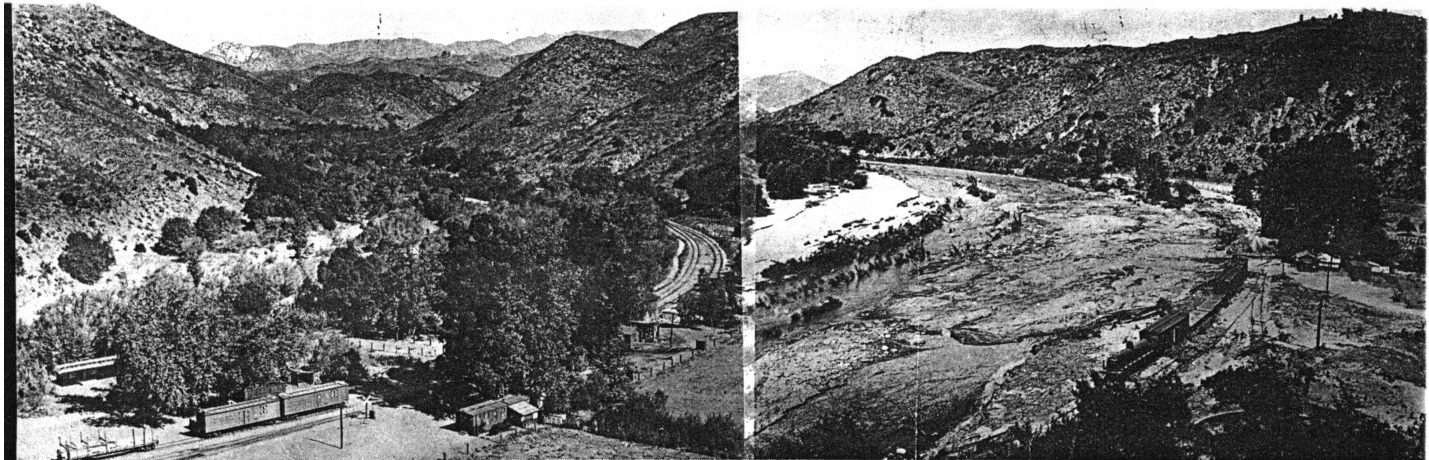
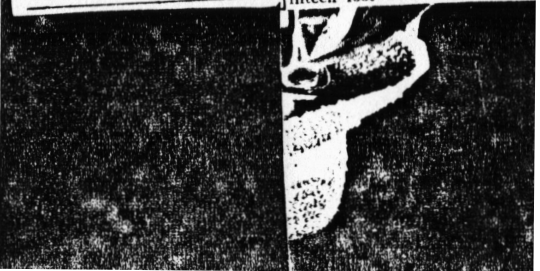
Railroad gets new track after herculean rescue

(Continued from Page 1) awarded the contract to bring the train back up. This company is still in business today.

The story also stated that the equipment to be moved consisted of "two passenger coaches; one engine, which with tender weighed over 100 tons; four refrigerator cars; one box

car; one tank car; one flat car with 76-foot turntable on it weighing over 36 tons; one box car with about 20 tons of odds and ends; a total weight of 400 tons.

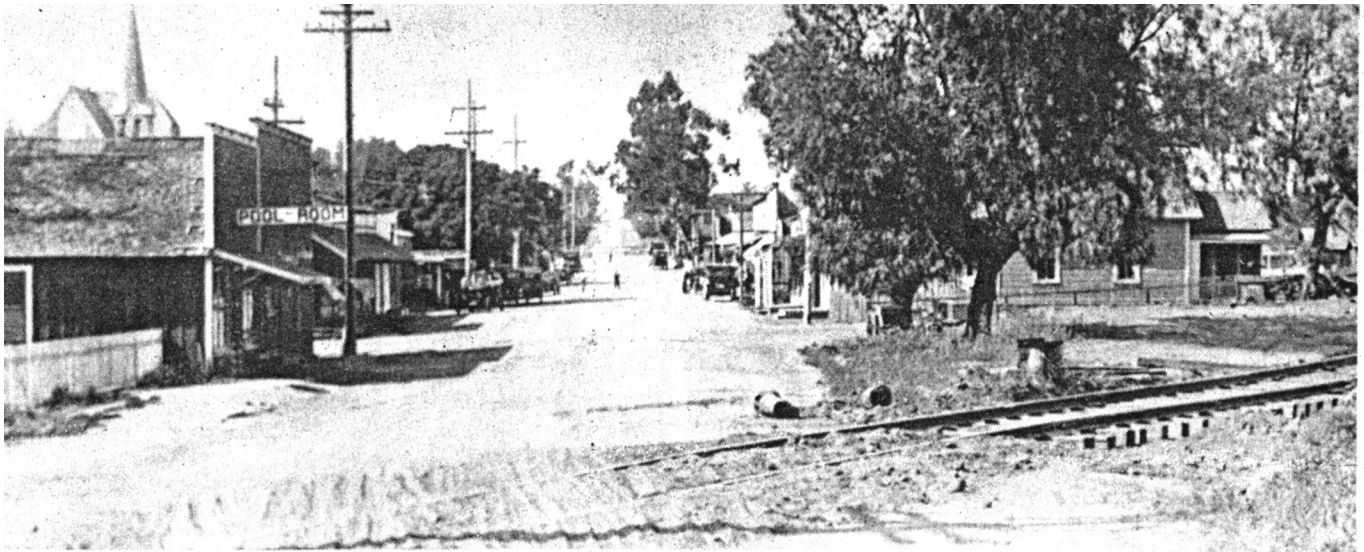
"The distance from the canyon to the top of the hill is 6,300 feet and the raise 435 feet. That big engine, with a fifteen foot wheel base had to



BEFORE AND AFTER FLOOD — The scene on the left is of the Fallbrook train station in the Santa Margarita River bed at the bottom of De-

Luz Road before the "Big Flood" in the winter of 1916. The scene at the right shows the same area following the disastrous flood which washed out

the station. The freight house and five train cars were washed away and never found.



NEW TRACK — In 1917 a new track was laid from Oceanside to Fallbrook through the present Camp Pendleton to a newly constructed train station on Alvarado Street. The track, above, crosses Main Street between Elder and Fig Streets. The pool room on the left was on the southwest corner of Main and Fig. In the background to the

left is the First Baptist Church. Main Street, a dirt road at the time of the picture, was paved several years later. The cars on the right are parked in front of the Fallbrook Hardware store, still standing at the southeast corner of Main and Alvarado.

1969

Fallbrook Enterprise

COVERING NORTHERN SAN DIEGO COUNTY'S AVOCADO AND CITRUS EMPIRE

SECTION B FALLBROOK, SAN DIEGO COUNTY, CALIFORNIA Thursday, March 27, 1969

POND VIEW -- Pond on the Garnsey Ranch, three-quarters full of silt, still shows damage from sand on Cottonwood Creek, a month after the record storm.

DeLuz area continues to dig out

One month has passed since the flood of Feb. 25 which resulted from a two-day storm which brought the DeLuz area approximately 14 inches of rain. But DeLuz is still digging out, and residents are seeking tax relief from as many sources as they can reach.

Felix Garnsey, a major DeLuz landowner, said it has been the toughest winter he has seen in 50 years.

Charles Compton of the California Division of Forestry estimated that truck trail repairs in the area have increased ten-fold during the past month.

Crews on Monday completed a new quarter-mile portion of Tenaja Truck Trail, which was taken out by raging Cottonwood Creek on Feb. 25. Two families upstream from the huge wash-out, Rudy Foss and Dan Manning, were cut off from civilization.

Foss and his family were evacuated for a week. Others walked in and out.

There were seven major slides on the Tenaja Truck Trail, north to the guard station, and five minor ones. The trail was washed out in seven places.

Work started Tuesday on the repair of Harris Spur, blocked in places by boulders 20 feet across, Compton said. The road from Murrieta south to the guard station is passable only by four-wheel drive vehicles.

Compton estimated that the amount of time spent by crews in repair total some 400 man hours to date.

The fear of DeLuz residents is that apparently the assessor may not view the damaged areas before they are fully repaired, so some are gathering photographs.

The Garnsey ranch suffered a mud slide which took down a silt dam, left sand around oaks and filled Frog Pond three-quarters full with sand.

Glen Wilcox lost about three acres from flooding of the west fork of DeLuz Creek. George Towne suffered mud damage in his house. Richard Matthews estimated \$10,000 damage at his ranch. This story was repeated again and again for all residents, in DeLuz, and the "Murrieta fork" area, and Sandia Canyon. Most roads are now repaired, many by Alan Brain, it was reported.

The season storm total for the DeLuz area varies from 40 to 56 inches to date.

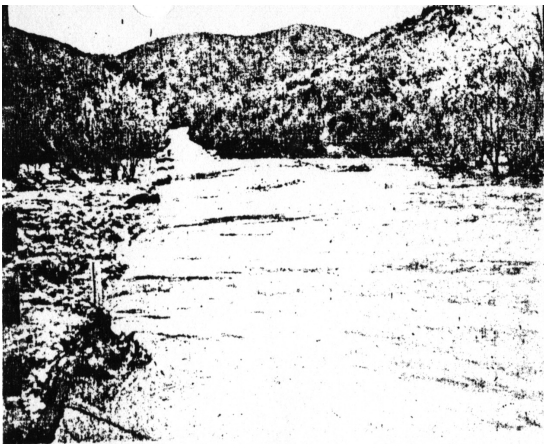
March 1969
Fallbrook Enterprise



ROAD NEAR WEST FORK -- Road to Matthews Ranch on west fork of De Luz Creek still shows signs of erosion after February flood. Detour is at far right, out of picture.



UNDERMINED CROSSING -- R. F. Matthews, left, talks with Virgil Brown concerning undermined crossing that still shows signs of damage on De Luz Creek. Some of the boulders, below, came from Vail Ranch, upstream.



TIDE — The DeLuz crossing of the Santa Margarita River was impassible at mid-week last week as the swollen river poured over the crossing. Photo two youths take to the high ground as they push their bicycle in a large puddle covering DeLuz Rd. one-half mile short of DeLuz cross-



The "CENTURY FLOOD" of 1978. The Garnsey ranch had a total of _____ inches for the season. That is the highest since 1884.

DeLuz area also flooded

The DeLuz area north of the Santa Margarita River was flooding along its water courses and ravines like the remainder of the Fallbrook community.

Mrs. Felix Garnsey, long-time resident, reported 24.34

inches of rain for the season (as of Tuesday morning).

This means that the Monday storm brought DeLuz at least two inches of rainfall.

From Jan. 4 through Jan. 15 she reported 14.16 inches and for the stormy period from Dec. 18 through Jan. 15 she measured 19.77 inches.

But she recalled that 1968-69 was even heavier in DeLuz with a 53-inch season from July 1 through June 30 including 22.20 inches in January, 1969 alone.

This year some new factors were added to the storm picture, Mrs. Garnsey noted. That area has still not come back as far as vegetation is concerned due to the devastating Tenaja fire of the summer of 1975.

The result is more mud slides and falling trees.

Added to the situation are a number of new roads and mud coming from the new Rancho California developments above DeLuz.

Oak trees also suffered from flooding, with an additional factor (on top of the fire and roads) involving animal burrows. It was not uncommon to spot leaning trees; one of them was found against someone's bedroom. It was reported.

DeLuz roads were reported to be closed this week; a major one being the DeLuz Murrieta Rd.

Lionel Meeker of DeLuz called the Enterprise Tuesday to report that DeLuz was in two eloquent words, "washed out."

Thursday, March 16, 1978

The Enterprise A13



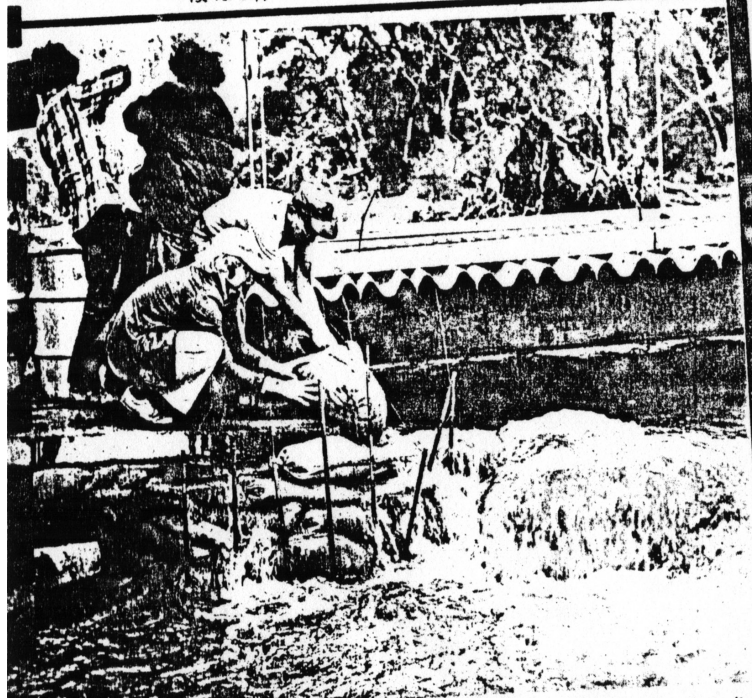
UNDERMINED — A small ranch house on the Claude Sweet property in DeLuz was undermined when a small stream became greatly enlarged and washed away part of the house's foundation. Although the structure sagged on one side the house is still being lived in.

THE ENVI

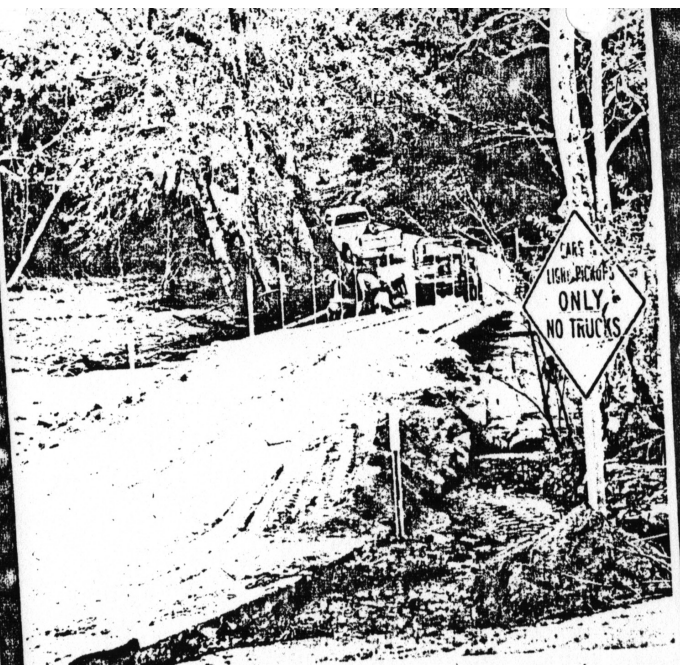
Fallbrook

Covering The Avocado and Citrus Empire of Nor

15¢ Per Copy



SOLUTION — Deluz area residents with sand bags to shore up the cement supporting a new steel bridge which will allow vehicle crossing of the Deluz bridge was put into place last week by department of transportation. The old bridge was discovered washed out a week earlier as the swollen stream recessed sufficiently to expose the damage. According to a county spokesman the temporary bridge will be replaced by a permanent structure when the water in the creek allows the work to be done.



NEW CROSSING — Only cars and light pickups are being allowed to cross Deluz Creek on the new steel bridge put in place by the department of transportation last week. The structure was being used temporarily until the water in the river lowers and a permanent bridge can be built to replace the one washed out two weeks ago.

Felix and the Durlings built a crossing to the east of this one in the creek-bed so that trucks could get across with crops and supplies.



RESTING — DeLuz rancher Felix Garnsey takes a breather beside a culvert he had to shore up recently with sand in plastic garbage bags to stop water from washing out the culvert. Garnsey found that using plastic to cover loose soil greatly restricted the water's cutting edge.



ON FOOT — DeLuz resident Pat Raley crosses the DeLuz Creek on one of two foot bridges which was operational during recent flooding. When the vehicle bridges had out the foot bridges became the only way to cross the swollen

Would you believe creek at 14 feet?

Flood stories are beginning to trickle out of the DeLuz area.

The most amazing but true account concerns the recent flash flood that caused DeLuz Creek to turn into a raging torrent that crested at 14 feet.

Residents Charles Key and Jan Metzger (and others) agree on the 14-foot figure. The flood took out a footbridge that spanned the creek at 14 feet on the Larry Butler ranch.

At the eight-mile mark Wes Elder had his Jeep parked on high ground alongside the creek but he told neighbors it rose like a monster and the Jeep is nowhere to be found.

Peggy Durling reported that the dam broke at the Kiwi Ranch on Saturday and a lot of water took an oak tree, caused a power outage and was endangering a house.

On Sunday a helicopter took Richard Matthews, in his 70's to Fallbrook Air Park for transportation to Fallbrook Hospital. It was found he was suffering only chest pains and Matthews was reported as released this week.

The cement slab at DeLuz Creek at the "Y" between the McManus place and Felix Garnsey's was reported as being washed out. The McManus footbridge was being utilized and on Monday groceries were brought across on a pulley.

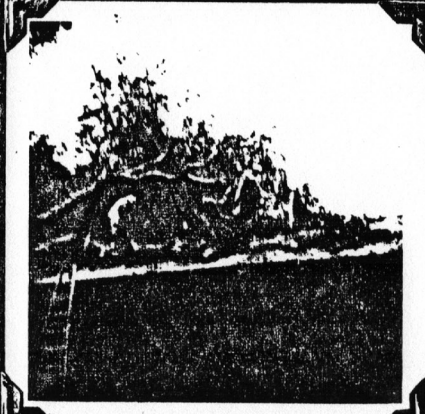
Mrs. Metzger said her house has been flooded with mud for the second time (Jan. 16 and March 1) because private agricultural roads above the house "built on debris" have broken away. She said the canyon was now in four sections. It was also reported but not confirmed that the county is planning a temporary bridge to span DeLuz Creek.

Lorraine Jarnot, a teller at Mutual Savings and Loan, Fallbrook, said she came across the Santa Margarita River near Sandia Creek by rowboat Monday morning to get to work.

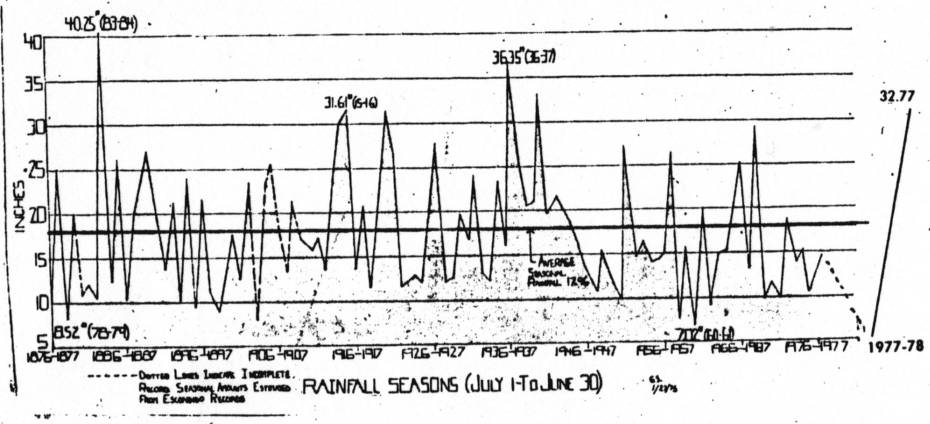
The Jarnot place on Via Ranchitos near Gavilan Mtn. Rd. along with a number of neighbors have been isolated six days, from Tuesday night (Feb. 28) until Monday morning.

She said neighbors finally cooperated to get a boat rigged up and that one youth swam across a swollen stream to some trees with a towline.

Ms. Jarnot came to Fallbrook in her old clothes and changed into good attire for her office work.



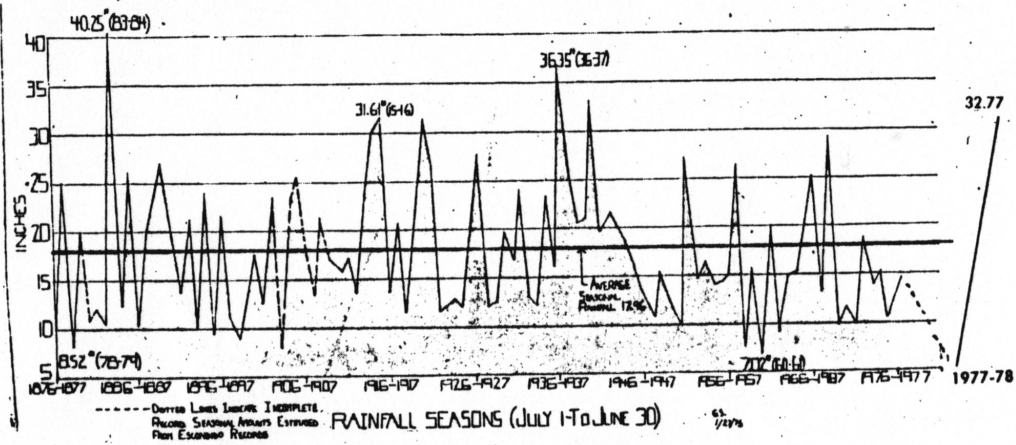
Five large oaks keeled over at the Mitchell house and Harry's cat. Luckily little damage was done.



HOW MUCH RAIN? — In order to answer questions as simply as possible, the Enterprise is running the Fallbrook Fox-White rainfall chart which goes back to 1876. The 1977-78 season total to date is 32.77 inches, exceeding 1915-16 (and the famous flood which washed out the railroad in the Santa Margarita canyon.) To in-

dicade how rainfall varies within a few short miles, the Garnsey Ranch in DeLuz reported 50.14 inches for the current season to date, probably surpassing all rainfall totals since 1883-84. (Chart first appeared in the Enterprise in February 1976.)





HOW MUCH RAIN? — In order to answer questions as simply as possible, the Enterprise is running the Fallbrook Fox-White rainfall chart which goes back to 1876. The 1977-78 season total to date is 32.77 inches, exceeding 1915-16 (and the famous flood which washed out the railroad in the Santa Margarita canyon.) To in-

dicade how rainfall varies within a few short miles, the Garnsey Ranch in Deluz reported 50.14 inches for the current season to date, probably surpassing all rainfall totals since 1883-84. (Chart first appeared in the Enterprise in February 1976.

