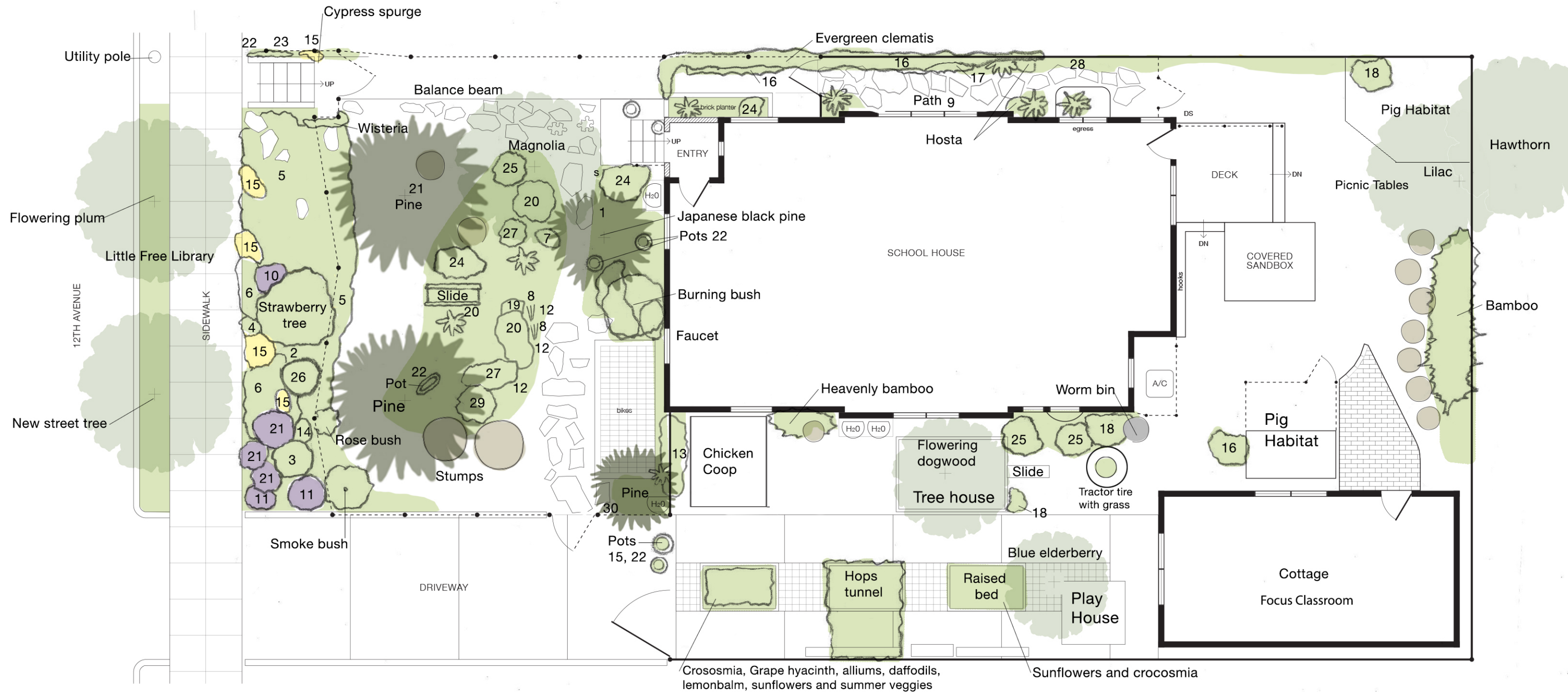




Owl and the Dove's outdoor environment is a GOLD certified Backyard Habitat (a program of the Audubon Society of Portland and Columbia Land Trust) We are dedicated to restoring and maintaining native wildlife habitats throughout or entire school property. We are committed to creating an environmentally healthy, therapeutic & restorative environment where we can connect the children in our care with the natural world!



Plant Key

- | | | | | | | |
|----------------------------|---------------------|---------------------|----------------------|-------------------|--------------------------|------------|
| 1 Wild ginger | 6 Candy tuft | 11 Spanish lavender | 16 Black mondo grass | 21 Sage, culinary | 26 California bay tree | Sword fern |
| 2 Bronze sedge | 7 Douglas iris | 12 Lithodora | 17 Japanese spurge | 22 Sedum | 27 Evergreen huckleberry | |
| 3 Wild lilac 'Victoria' | 8 Blue rush | 13 Oregon grape | 18 Ninebark | 23 Hens & chicks | 28 Labrador violet | |
| 4 Crocus | 9 Vinca | 14 Grape hyacinth | 19 Licorice fern | 24 Spirea | 29 Variegated weigela | |
| 5 Creeping St. John's wort | 10 English lavender | 15 Daffodil | 20 Rose, wild | 25 Snowberry | | |

Owl and The Dove School Garden