



Pushing Paper

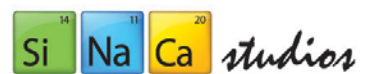
SEPT 11-OCT. 8, 2021

FWADA Gallery Night: Saturday, Sept 11, 12-9 p.m.

Third Thursday: Thursday, Sept 16, 6-9 p.m.



Duncan McClellan Glass
presented by



SCHOOL OF GLASS AND GALLERY
A NON-PROFIT 501C3 ORGANIZATION

1) Spairs

Remembrance

Monoprint

35x29.5" Framed

\$500



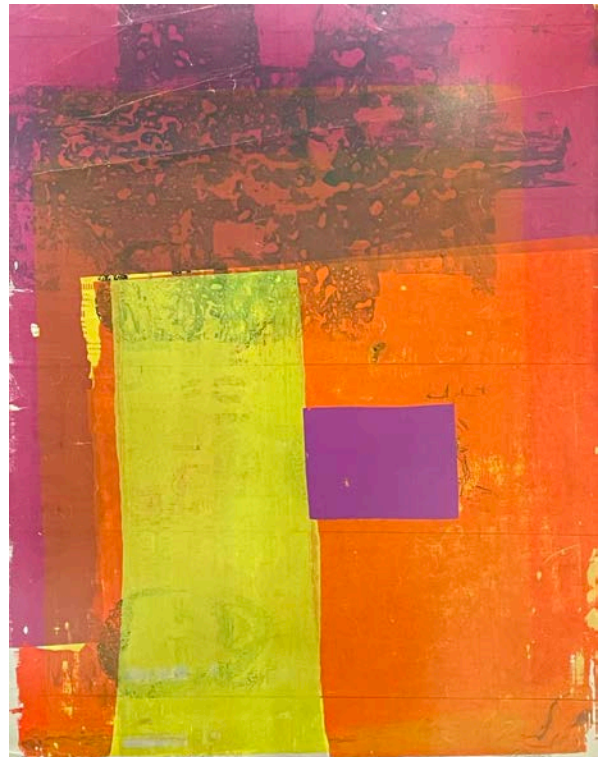
2) Spairs

Construction

Monoprint

35x29.5" Framed

\$500



3) Pablo Picasso

Dove with Sun

Lithograph

17 ½ x14 ½ Framed

\$350



4) Sigmund Menkes

Menkes Still Life

Watercolor on Paper

33x21.5 Framed

\$1,500



5) Marc Chagall

The Fiddler, 29/500

Print

39 3/4 x 27 1/2

\$1,300



6) Chad Isham

14

Mixed Media on Paper

36.5x28.25 Framed

\$1,300



7) Unknown Artist

A Woman Cooking

Serigraph (15/22)

26x34 Framed

Signed LR

\$500



8) Pablo Picasso

Couple et Enfant

Intaglio Engraving, Embossed Mat

17 1/2 x 13 1/2 Framed

\$433

(includes COA)



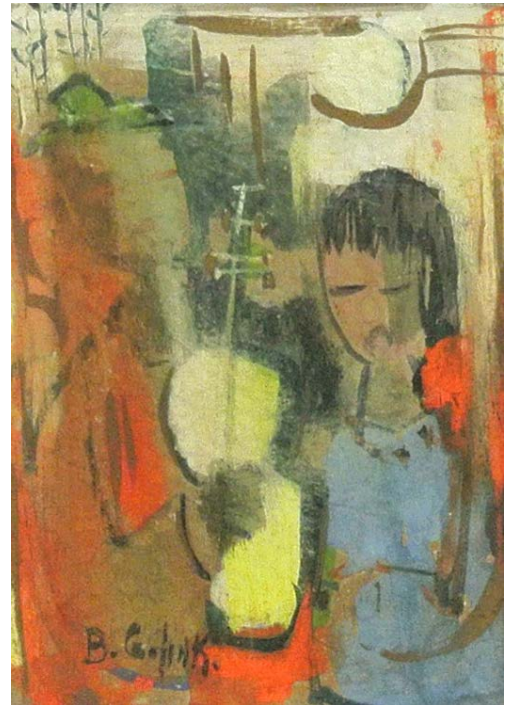
9) Belle Golinko

Holiday

Gouache on Paper

12.5x11.5 Framed

\$120



10) Belle Golinko

Table Top Still Life

Pastel on Paper

20x16.5 Framed

\$200



11) Amani Sodiq-Odunaiya

Se O Ngbo Mi_02

Photograph

20x16 Framed

\$200



12) Salvador Dali

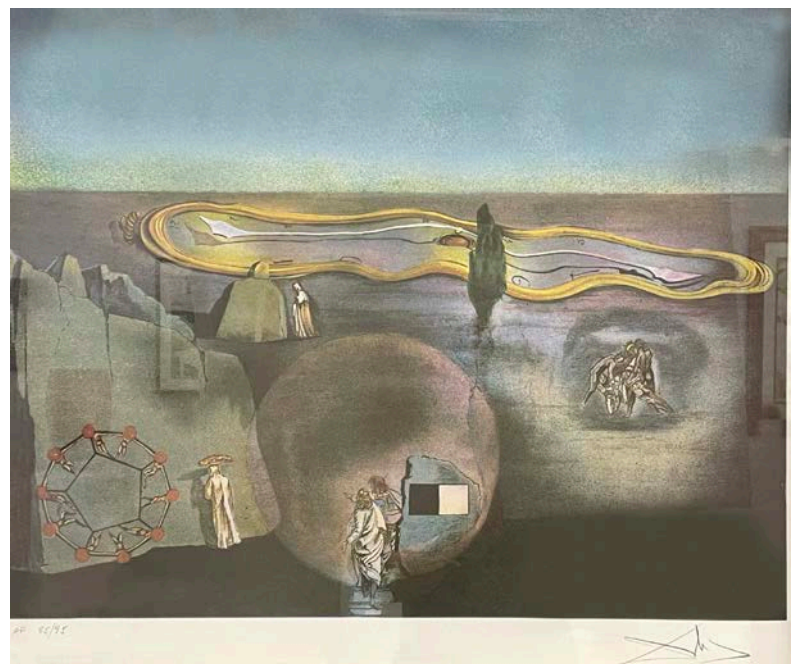
In Search of the Fourth Dimension

Lithograph Pencil Signed

31 ½ x35 Framed

\$950

(includes COA)



13) Georges Braque

Cubist Still Life

Etching, Aquatint

37x25 Framed

\$2,400



14) Pablo Picasso

Portrait of Sylvette David in Green Chair

Serigraph

25.5x21.5 Framed

NFS



15) Marcel Mouly

Untitled

Gouache on Paper

14x20.75 Framed

\$550



16) Esther Pearl Watson

Dust it Off and Try Again

Mixed Media on Cardboard

9.75x14 Framed

\$1,500



17) Esther Pearl Watson

Friday Night at Cook's Fish Barn for Fried
Catfish off Highway 36

Mixed Media on Cardboard

11.5x14.25 Framed

\$1,500



18) Attributed to Josphine Mahaffey

Flowers

Mixed Media on Paper

21x18 Framed

\$200



19) Montelola Cofisori

Donne a Cavallo, 1959

Limited Edition Etching, 7/20

17.5x13.5 Framed

\$175



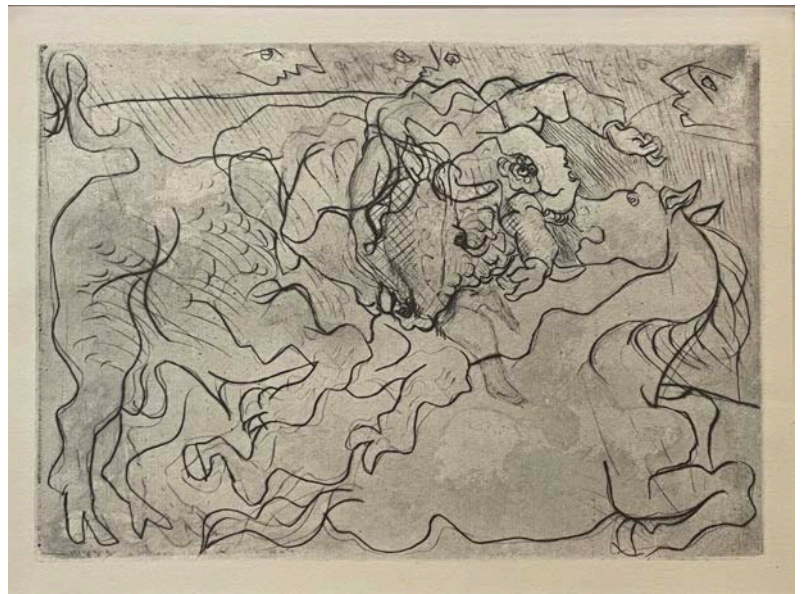
20) Pablo Picasso

Wounded Female Bullfighter

Lithograph

13 ½ x 17 ½ Framed

\$590



21) Pablo Picasso

Le Entretien, 1923

Domain signed LR

Lithograph

29 1/8 x 25 1/2 Framed

\$3,040



22) Pablo Picasso

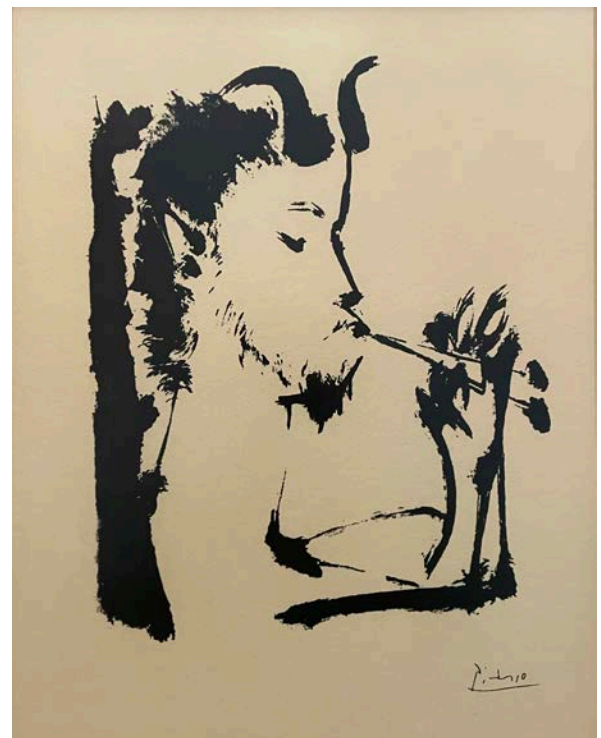
Faun With Two Flutes

Lithograph

Signed in Plate

20.25x16 Framed

\$150



23) Salvador Dali

Morphological echo

Print

21 3/4 W 25 3/4 Framed

\$1,100



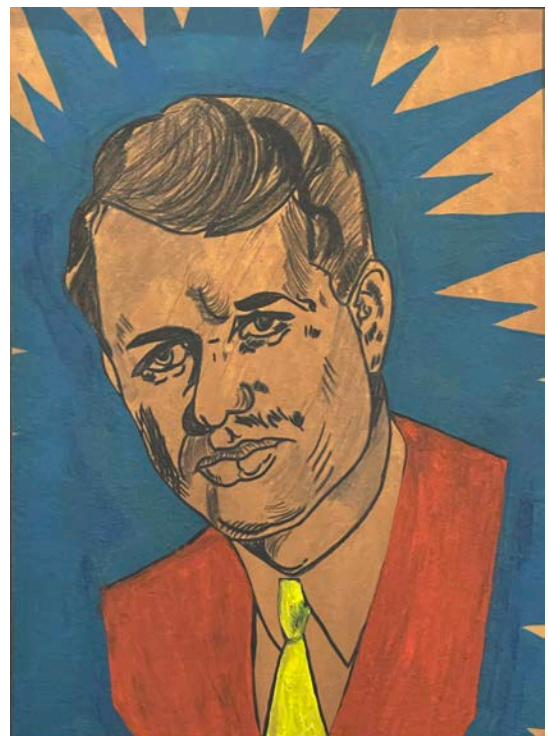
24) Unknown Artist

Robert F. Kennedy Portrait

Mixed Media on Paper

22x18 Framed

\$100



25) Adolph Gottlieb

Dialogue 1

Print

18.25x28.25 Framed

\$120



26) Unknown Artist

Soldiers

Photograph

12.5x15.5 Framed

\$75



27) Al Hirschfeld

Un Cocktail

Print - Hand Colored

20x17.25

\$750



28) Théo Tobiasse

La Columbe, 14/75

Carborundum

34x27.5 Framed

\$1,500



29) Paul Lingren

Inception

Etching, AP

Signed LR

38x32 Framed

\$550



Duncan McClellan

presented by



SCHOOL OF GLASS AND GALLERY
A NON-PROFIT 501C3 ORGANIZATION



Duncan McClellan's fascination with glass began at age five, when he visited a glass factory in West Virginia. Duncan never forgot the image of the glowing, molten mass being formed by an expert craftsman.

After successfully working with leather and clay, he finally had the opportunity to learn to blow glass at a studio in Ybor City, Florida in 1987. Duncan has studied the creation of larger forms with Fred Kahl and John Brekke, two instructors and artists working at the New York Experimental Glass Workshop. Duncan has also been honored as the second American invited to study and work at the ARS Studio in Murano, Italy.

Duncan most recently moved from Tampa and now works out of a newly renovated tomato plant in Midtown District of St. Petersburg, FL. Duncan redesigned a 7,800-square-foot building to have plenty of space to work and host events for local non-profits. Duncan's processes enables him to place imagery on the inside and outside (and in some cases both) of his glass vessels. In his one-of-a-kind or series works, images are juxtaposed to articulate the message or idea. The focus is centered around the internal graal technique and overlay techniques, incorporating hand cutting, photo resist and computer graphics.

To finish these works, acid etching, fire polishing and a six-stage grinding and polishing technique are used. Currently, his work depicts emotions relating to family, personal growth and the spiritual connections between each of us as souls. As Duncan embarks on each new artistic journey, his connection to the work is more deeply felt by those who experience it. Each piece holds a unique place in the artist's life and it is his joy to share with it you. Thanks to the glass factory he visited at the tender age.



30) Duncan McClellan

Prometheus' Fire

Hand Carved Glass

12×12×12"

\$3,500



31) Duncan McClellan

Dragonfly

Hand Carved Glass

14 × 14 × 22"

\$7,400



32) Duncan McClellan

Drawn to Flame

Hand Carved Glass

14 × 14 × 27"

\$8,700



33) Duncan McClellan

Men-A-Morphis

Hand Carved Glass

13 × 13 × 9"

\$2,700



34) Duncan McClellan

Transformation

Hand Carved Glass 1

1.5 × 11.5 × 18.5"

\$5,200



Pushing Paper

SEPT 11-OCT. 8, 2021

Gallery 440 presents *Pushing Paper*, a show of varied modern works on paper, including drawings, prints, lithographs and paintings by artists such as Marcel Mouly, Georges Braque, Pablo Picasso, Marc Chagall, Al Hirschfeld, Salvador Dali, and even some favorite local and regional Texas artists.

Collectively, the works in the exhibition range from all time periods, but primarily the modern era. The curation aims to celebrate all styles, techniques and genres so that we can learn and appreciate paper as a primary art form, fundamental to every artist's practice. **A very special addition to the show is a pop-up display featuring the famed glass artist Duncan McClellan as part of SiNaCa Studios.**

FWADA Gallery Night: Saturday, Sept 11, 12-9 p.m.

Third Thursday: Thursday, Sept 16, 6-9 p.m.

Call us for an appointment for a private viewing!

440 S. MAIN STREET | FORT WORTH 76104

Gallery440.com | 817.335.0100

GALLERY

4 4 0