

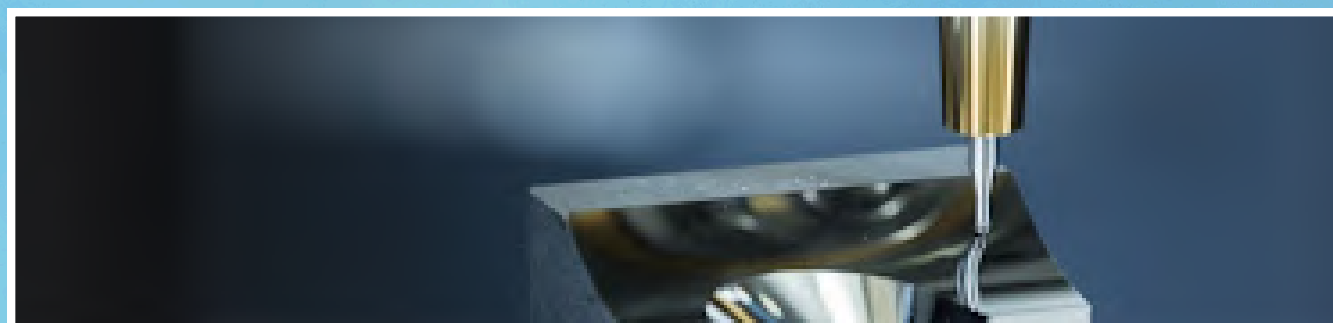
2.0

NEXT GEN ROUND TOOLS

UNMATCHED QUALITY, UNPARALLELED PERFORMANCE

ASHARPEDGE

**CARBIDE CUTTING
TOOLS**





INTRODUCTION

Sharpedge Tools Technology Pvt. Ltd started its Business journey in the year 2016, Sharpedge is providing complete Turnkey Projects in Modular Flooring, Safety Barriers & Machine Tooled Up to its Customers with wide range of products & innovative solutions.

COMPANY HISTORY

2016-2017

Sharpedge Tools Technology PVT LTD started its Business journey in the year 2016~17. STTPL is providing complete tooled up single partner solutions to its Customers based in North & East of India

2018-2020

We have Tool Holdings, Work Holdings, Industrial Flooring, Cam Software & Services for your tools.

2017-2018

Having very wide range of cutting tools including Turning, Milling, Threading & Holding range In our product offerings.

2020-2023

Considering our journey so far, customer base we have earned, demand of market and commence with in-house special soft indexable tools on our five axis VMC machine & Solid Carbide manufacturing facility

OUR SERVICE



Time Estimation



Tooled Up Project



Application Support



Productivity Improvement



Prove out at your works



Repair & Regrind Facility



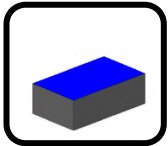
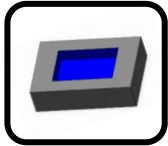
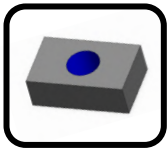
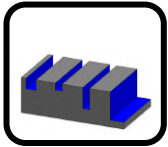
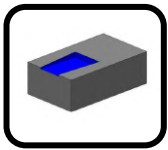
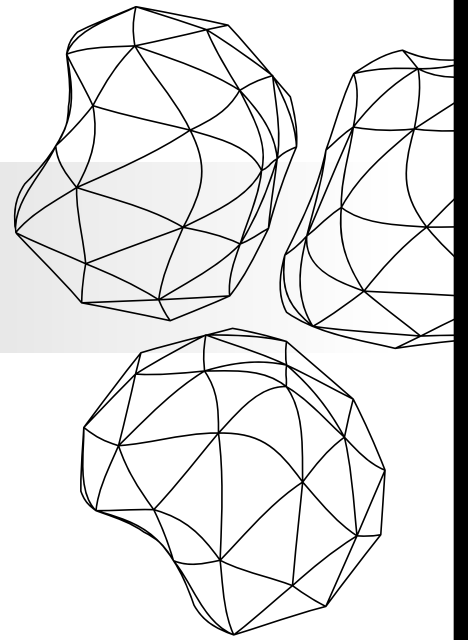
INDEX

SC End Mill	1-3
SC Ball Nose	4-6
SC Chamfer tool uncoated	7-9
SC Micro Endmill	10-12
SC Micro Ball Nose	13-15
Rougher Cutter	16-18

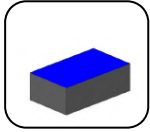
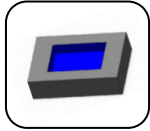
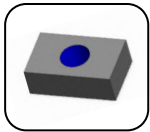
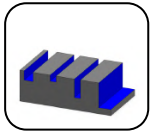
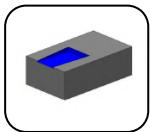
 SHARPEDGE

38th Milestone NH -8 Jaipur Delhi
Highway ,Khandsa Service Road ,
Gurugram haryana 122001
www.sharpedgetools.com

SC END MILL

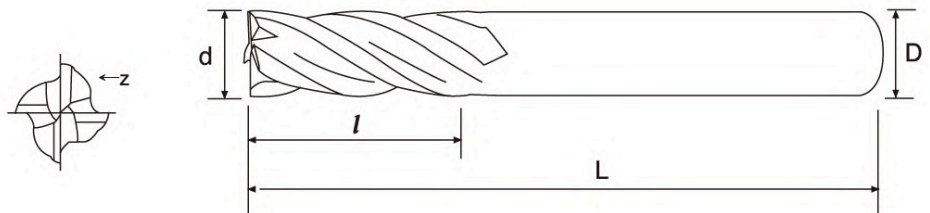


Solid Carbide End Mills

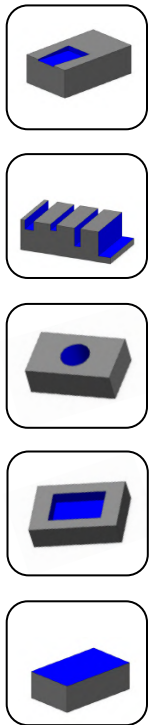


Specification

Cutting Dia (mm) d	Shank Dia (mm) D	working length (l)	OAL(mm)	Helix Angle	Price
1	4	3	50	45°	
1.5	4	4.5	50	45°	
2	4	6	50	45°	
2.5	4	7	50	45°	
3	4	8	50	45°	
4	4	10	50	45°	
4	4	16	75	45°	
4	4	20	100	45°	
5	5	13	50	45°	
6	6	15	50	45°	
6	6	25	75	45°	
6	6	30	100	45°	
8	8	20	60	45°	
8	8	25	75	45°	
8	8	35	100	45°	
10	10	25	75	45°	
10	10	40	100	45°	
12	12	30	75	45°	
12	12	45	100	45°	
14	14	40	100	45°	
16	16	45	100	45°	
18	18	45	100	45°	
20	20	45	100	45°	

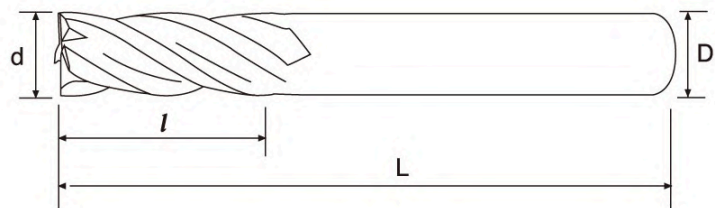


Solid Carbide End Mills

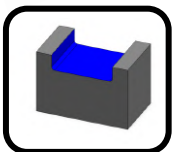
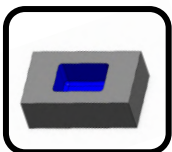
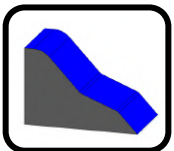
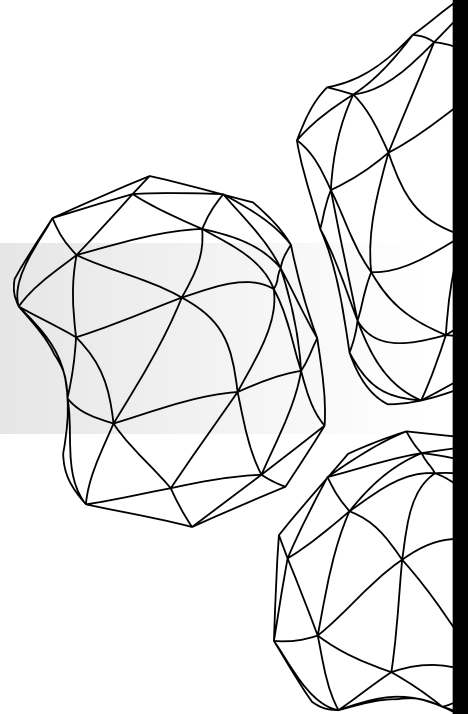


Specification

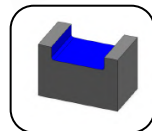
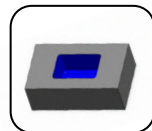
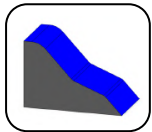
Cutting Dia (mm) d	Shank Dia (mm) D	working length	OAL(mm)	Helix Angle	Price
1	4	3	50	35°	
1.5	4	4.5	50	35°	
2	4	6	50	35°	
2.5	4	7	50	35°	
3	4	8	50	35°	
4	4	10	50	35°	
4	4	16	75	35°	
5	5	13	50	35°	
6	6	15	50	35°	
6	6	25	75	35°	
6	6	30	100	35°	
8	8	20	60	35°	
8	8	25	75	35°	
8	8	35	100	35°	
10	10	25	75	35°	
10	10	40	100	35°	
12	12	30	75	35°	
12	12	45	100	35°	
14	14	40	100	35°	
16	16	45	100	35°	
18	18	45	100	35°	
20	20	45	100	35°	



SC Ball Nose

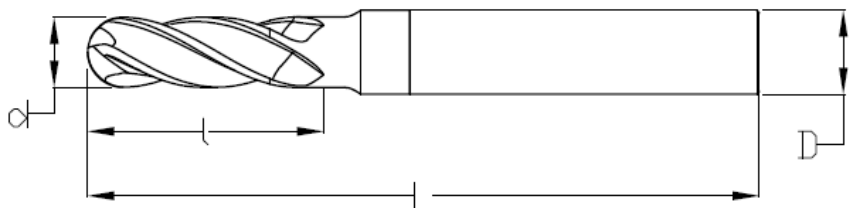


4F Carbide Ball Nose End Mills

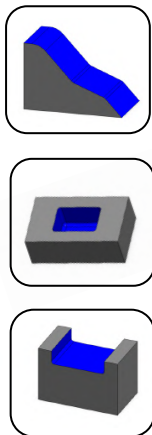


Specification

Cutting Dia (mm) d	Shank Dia (mm) D	working length	OAL(mm)	Helix Angle	Price
1	4	3	50	35°	
1.5	4	4.5	50	35°	
2	4	6	50	35°	
2.5	4	7	50	35°	
3	4	8	50	35°	
4	4	10	50	35°	
4	4	16	75	35°	
4	4	20	100	35°	
5	5	13	50	35°	
6	6	15	50	35°	
6	6	25	75	35°	
6	6	30	100	35°	
8	8	20	60	35°	
8	8	25	75	35°	
8	8	35	100	35°	
10	10	25	75	35°	
10	10	40	100	35°	
12	12	30	75	35°	
12	12	45	100	35°	
14	14	40	100	35°	
16	16	45	100	35°	
18	18	45	100	35°	
20	20	45	100	35°	

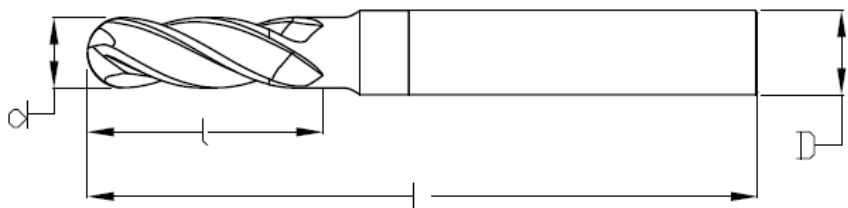


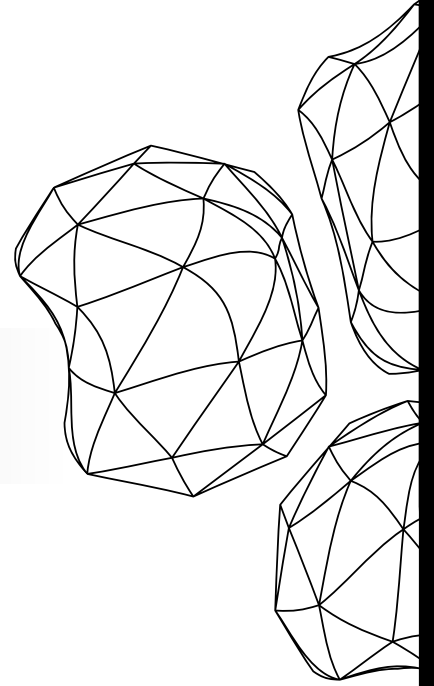
4F Carbide Ball Nose End Mills



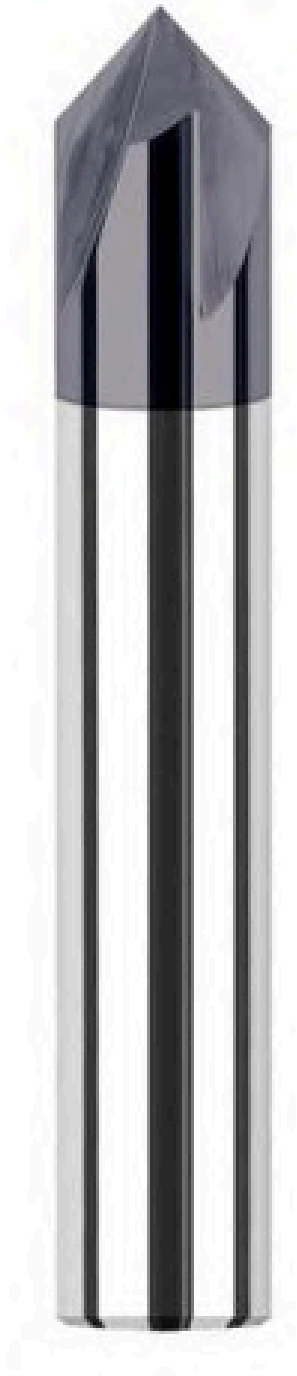
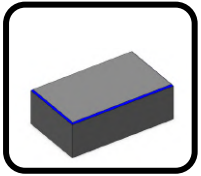
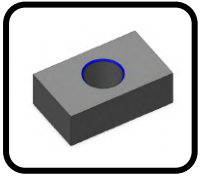
Specification

Cutting Dia (mm) d	Shank Dia (mm) D	working length	OAL(mm)	Helix Angle	Price
1	4	3	50	45°	
1.5	4	4.5	50	45°	
2	4	6	50	45°	
2.5	4	7	50	45°	
3	4	8	50	45°	
4	4	10	50	45°	
4	4	16	75	45°	
4	4	20	100	45°	
5	5	13	50	45°	
6	6	15	50	45°	
6	6	25	75	45°	
6	6	30	100	45°	
8	8	20	60	45°	
8	8	25	75	45°	
8	8	35	100	45°	
10	10	25	75	45°	
10	10	40	100	45°	
12	12	30	75	45°	
12	12	45	100	45°	
14	14	40	100	45°	
16	16	45	100	45°	
18	18	45	100	45°	
20	20	45	100	45°	

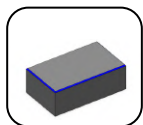
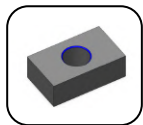




SC Chamfer tool uncoated

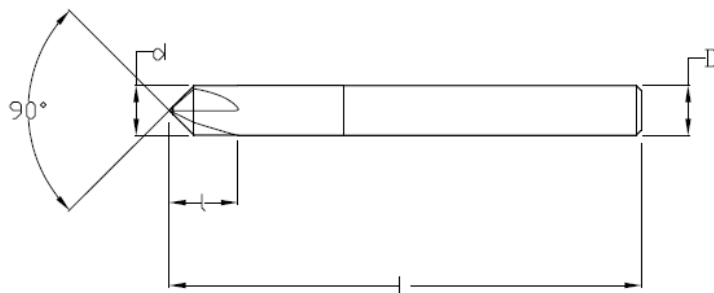


Carbide SC Chamfer tool uncoated

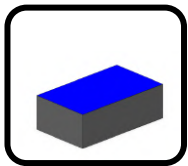
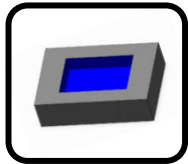
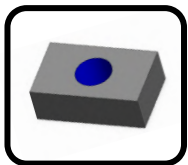
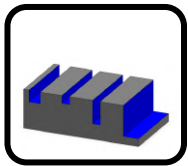
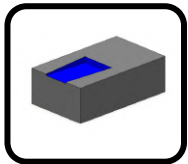
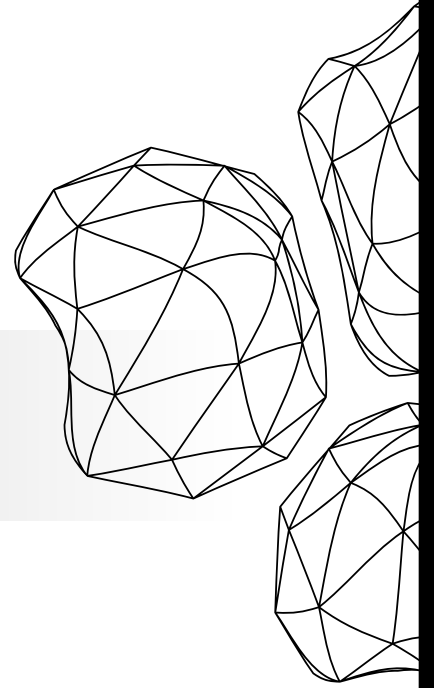


Specification

α angle	Mill Diameter (mm)	Shank Diameter (mm)	OAL (mm)	Price
60°	4	4	50	
60°	5	5	50	
60°	6	6	50	
60°	8	8	50	
60°	10	10	60	
60°	12	12	60	
60°	16	16	85	
90°	4	4	50	
90°	5	5	50	
90°	6	6	50	
90°	8	8	7	
90°	10	10	60	
90°	12	12	60	
90°	16	16	85	
120°	4	4	50	
120°	5	5	50	
120°	6	6	50	
120°	8	8	50	
120°	10	10	60	
120°	12	12	60	
120°	16	16	85	



SC MICRO END MILL

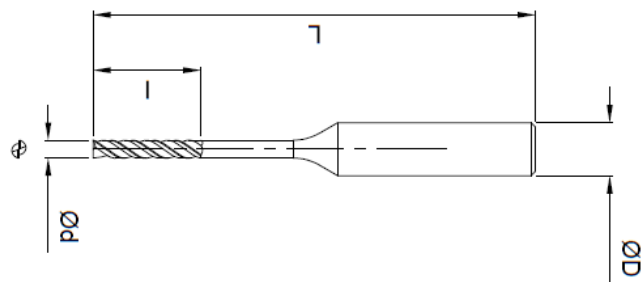
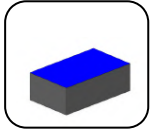
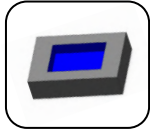
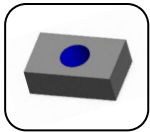
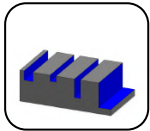
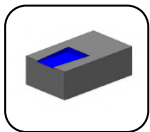


SC MICRO END MILL

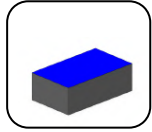
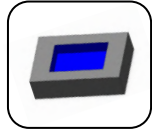
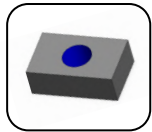
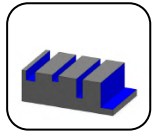
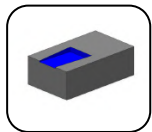
Specification



Cutting Dia (mm) d	Shank Dia (mm) D	working length	OAL(mm)	Helix Angle	Price
1	4	6(3+3)	50	35°	
1	4	8(3+5)	50	35°	
1	4	10(3+7)	50	35°	
1	4	12(3+9)	50	35°	
1	4	16(3+13)	50	35°	
1	4	20(3+17)	50	35°	
1.5	4	6(4.5+1.5)	50	35°	
1.5	4	8(4.5+3.5)	50	35°	
1.5	4	10(4.5+5.5)	50	35°	
1.5	4	12(4.5+7.5)	50	35°	
1.5	4	16(4.5+11.5)	50	35°	
1.5	4	20(4.5+15.5)	50	35°	
1.5	4	25(4.5+20.5)	50	35°	
2	4	8(6+2)	50	35°	
2	4	10(6+4)	50	35°	
2	4	12(6+6)	50	35°	
2	4	16(6+10)	50	35°	
2	4	20(6+14)	50	35°	
2	4	25(6+19)	50	35°	
2.5	4	10(7.5+2.5)	50	35°	
2.5	4	12(7.5+4.5)	50	35°	
2.5	4	16(7.5+8.5)	50	35°	
2.5	4	20(7.5+12.5)	50	35°	
2.5	4	25(7.5+17.5)	50	35°	

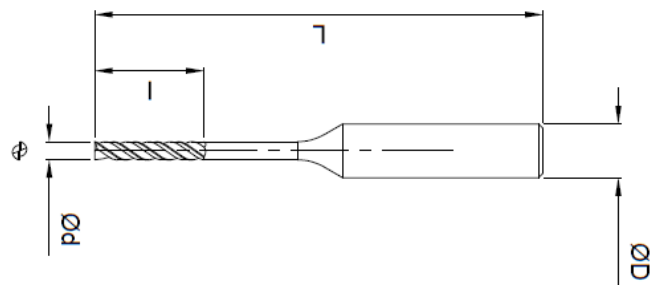


SC MICRO END MILL

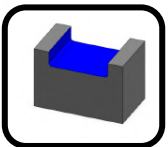
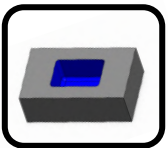
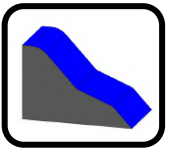
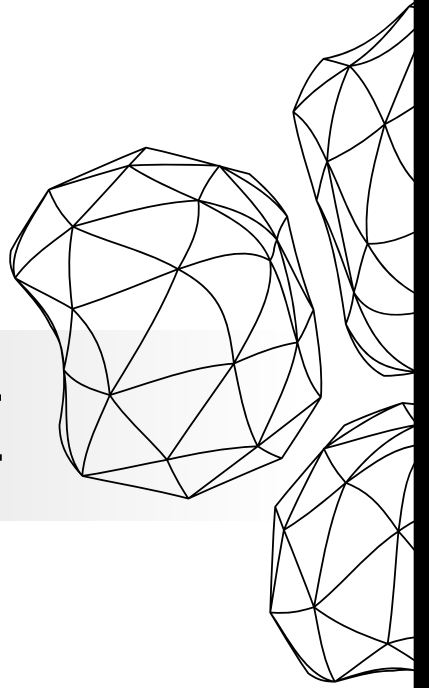


Specification

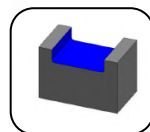
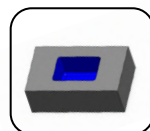
Cutting Dia (mm) d	Shank Dia (mm) D	working length	OAL(mm)	Helix Angle	Price
1	4	6(3+3)	50	45°	
1	4	8(3+5)	50	45°	
1	4	10(3+7)	50	45°	
1	4	12(3+9)	50	45°	
1	4	16(3+13)	50	45°	
1	4	20(3+17)	50	45°	
1.5	4	6(4.5+1.5)	50	45°	
1.5	4	8(4.5+3.5)	50	45°	
1.5	4	10(4.5+5.5)	50	45°	
1.5	4	12(4.5+7.5)	50	45°	
1.5	4	16(4.5+11.5)	50	45°	
1.5	4	20(4.5+15.5)	50	45°	
1.5	4	25(4.5+20.5)	50	45°	
2	4	8(6+2)	50	45°	
2	4	10(6+4)	50	45°	
2	4	12(6+6)	50	45°	
2	4	16(6+10)	50	45°	
2	4	20(6+14)	50	45°	
2	4	25(6+19)	50	45°	
2.5	4	10(7.5+2.5)	50	45°	
2.5	4	12(7.5+4.5)	50	45°	
2.5	4	16(7.5+8.5)	50	45°	
2.5	4	20(7.5+12.5)	50	45°	
2.5	4	25(7.5+17.5)	50	45°	



SC MICRO BALL NOSE

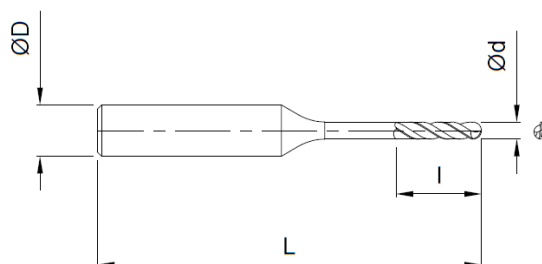


SC MICRO BALL NOSE

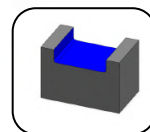
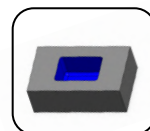
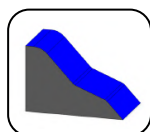


Specification

Radius (mm)	Shank Dia (mm) D	working length	OAL (mm)	Helix Angle	Price
R0.5	4	4(2+2)	50	35°	
R0.5	4	6(2+4)	50	35°	
R0.5	4	8(2+6)	50	35°	
R0.5	4	10(2+8)	50	35°	
R0.5	4	12(2+10)	50	35°	
R0.5	4	16(2+14)	50	35°	
R0.5	4	20(2+18)	50	35°	
R0.75	4	6(3+3)	50	35°	
R0.75	4	8(3+5)	50	35°	
R0.75	4	10(3+7)	50	35°	
R0.75	4	12(3+9)	50	35°	
R0.75	4	16(3+13)	50	35°	
R0.75	4	20(3+17)	50	35°	
R0.75	4	25(3+22)	50	35°	
R1	4	8(4+4)	50	35°	
R1	4	10(4+6)	50	35°	
R1	4	12(4+8)	50	35°	
R1	4	16(4+12)	50	35°	
R1	4	20(4+16)	50	35°	
R1	4	25(4+21)	50	35°	
R1.25	4	10(5+5)	50	35°	
R1.25	4	12(5+7)	50	35°	
R1.25	4	16(5+11)	50	35°	
R1.25	4	20(5+15)	50	35°	
R1.25	4	25(5+20)	50	35°	

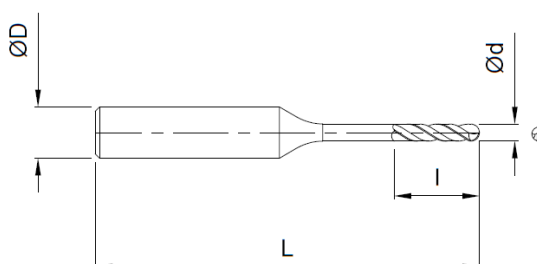


SC MICRO BALL NOSE

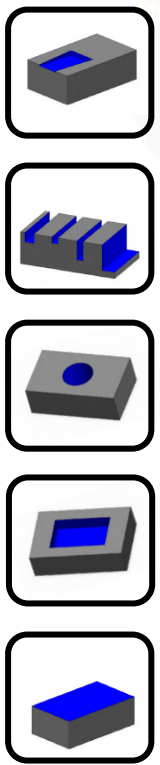
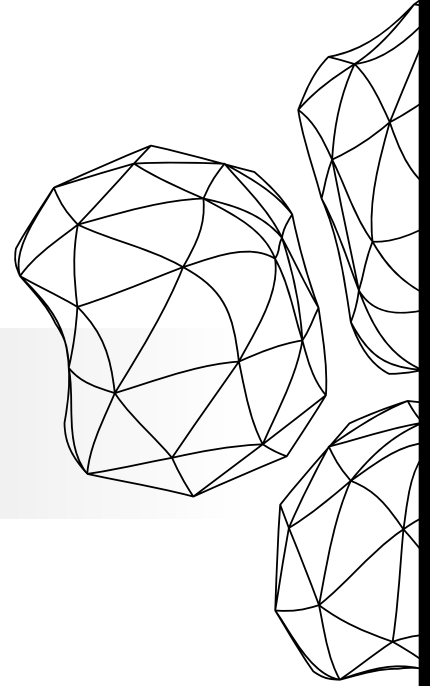


Specification

Radius (mm)	Shank Dia (mm) D	working length	OAL (mm)	Helix Angle	Price
R0.5	4	4(2+2)	50	45°	
R0.5	4	6(2+4)	50	45°	
R0.5	4	8(2+6)	50	45°	
R0.5	4	10(2+8)	50	45°	
R0.5	4	12(2+10)	50	45°	
R0.5	4	16(2+14)	50	45°	
R0.5	4	20(2+18)	50	45°	
R0.75	4	6(3+3)	50	45°	
R0.75	4	8(3+5)	50	45°	
R0.75	4	10(3+7)	50	45°	
R0.75	4	12(3+9)	50	45°	
R0.75	4	16(3+13)	50	45°	
R0.75	4	20(3+17)	50	45°	
R0.75	4	25(3+22)	50	45°	
R1	4	8(4+4)	50	45°	
R1	4	10(4+6)	50	45°	
R1	4	12(4+8)	50	45°	
R1	4	16(4+12)	50	45°	
R1	4	20(4+16)	50	45°	
R1	4	25(4+21)	50	45°	
R1.25	4	10(5+5)	50	45°	
R1.25	4	12(5+7)	50	45°	
R1.25	4	16(5+11)	50	45°	
R1.25	4	20(5+15)	50	45°	
R1.25	4	25(5+20)	50	45°	



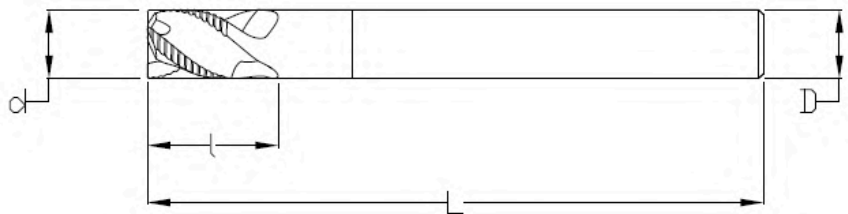
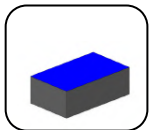
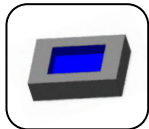
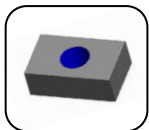
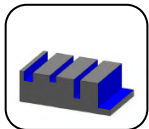
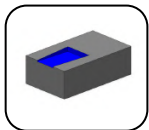
ROUGHER CUTTER



ROUGHER CUTTER

Specification

Cutting Dia (mm) d	Shank Dia (mm) D	working length	OAL(mm)	Helix Angle	Price
4	4	10	35°	50	
5	5	12	35°	50	
6	6	15	35°	50	
8	8	20	35°	60	
10	10	25	35°	75	
12	12	30	35°	75	
6	6	30	35°	100	
8	8	35	35°	100	
10	10	40	35°	100	
12	12	45	35°	100	
14	14	35	35°	100	
16	16	40	35°	100	
18	18	40	35°	100	
20	20	40	35°	100	
16	20	70	35°	150	

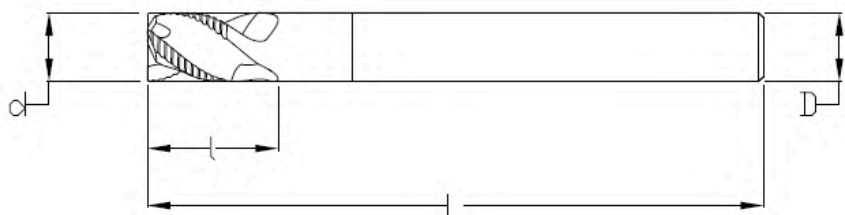
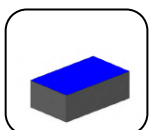
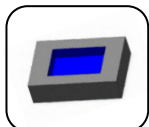
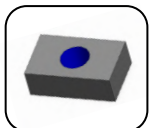
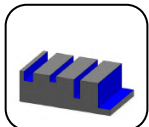
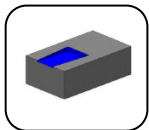


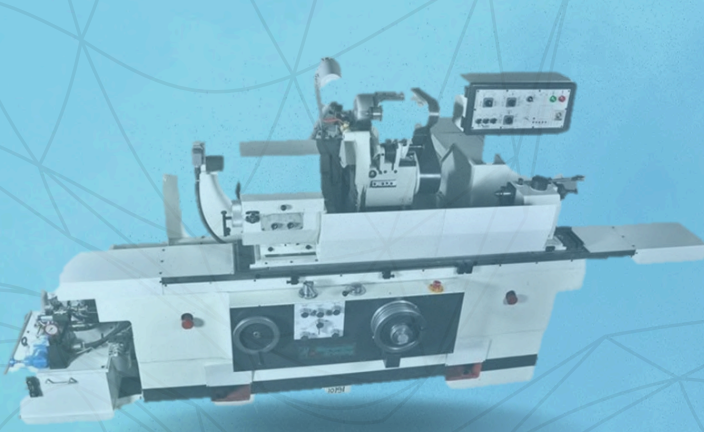
ROUGHER CUTTER



Specification

Cutting Dia (mm) d	Shank Dia (mm) D	working length	OAL(mm)	Helix Angle	Price
4	4	10	45°	50	
5	5	12	45°	50	
6	6	15	45°	50	
8	8	20	45°	60	
10	10	25	45°	75	
12	12	30	45°	75	
6	6	30	45°	100	
8	8	35	45°	100	
10	10	40	45°	100	
12	12	45	45°	100	
14	14	35	45°	100	
16	16	40	45°	100	
18	18	40	45°	100	
20	20	40	45°	100	
16	20	70	45°	150	





SHARPEDGE

amit@sharpedgetools.com , sales@sharpedgetools.com

38th Milestone Nh-8 Delhi - Jaipur Highway Khandsa Service Road , Gurugram ,
Haryana 122001

www.sharpedgetools.com