

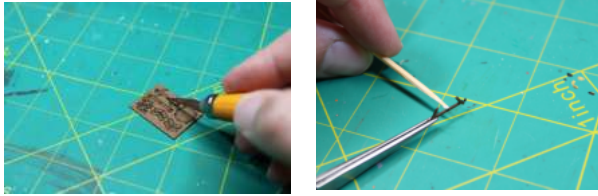
*Composite Designs, Inc.*  
**N Scale**  
**Octagon Picnic Table - qty 2**

Thank you for purchasing this laser cut kit.

Be sure to follow these simple tips to help make the assembly successful. If you are going to paint the tables we recommend priming or sealing the wood prior to painting. A standard wood glue or white glue can be used to assemble this kit. We have found a tacky type glue works well and is a good combination of quick stickiness and flexibility to adjust pieces.

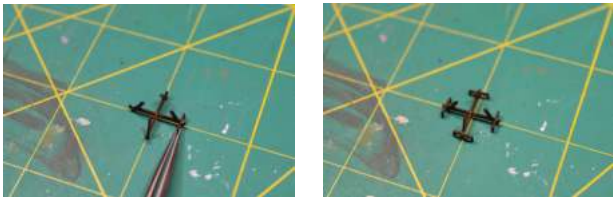
**Step 1**

Prime all pieces if required and let dry completely.



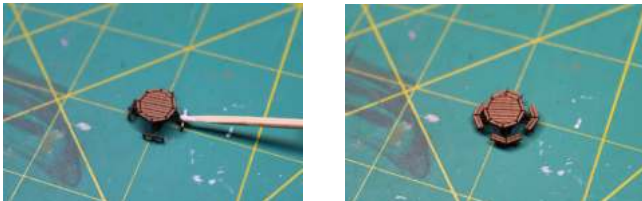
**Step 2**

Cut the Small Tabs to remove the pieces from the wood sheets start with a set of cross braces. Sand any remaining tab smooth. Put a drop of glue in the middle slot and assemble the two cross braces together. Be sure they dry at a 90 degree angle to each other.



**Step 3**

Apply Glue and install the 4 seat braces. Be sure to keep these square to both the ground and the cross brace.



**Step 4**

Apply 4 drops of glue on the tops of the table mounts and install the table top. Next apply a bead of glue along the seat bracket and place the seats in place. Lining them up with the table top. Allow to dry fully.

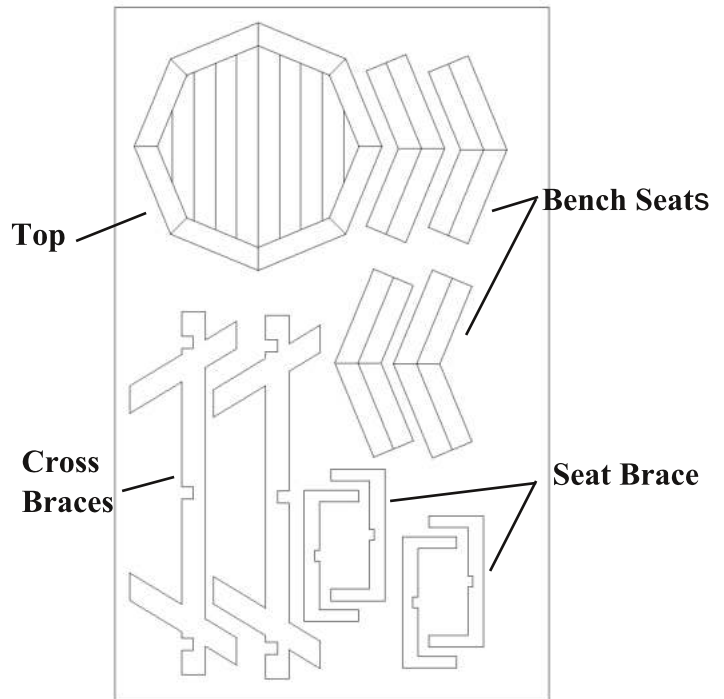
**Step 5**

Paint and/or weather as desired.



Be sure to visit our website for more kits and tips.  
[www.Compositedesignsinc.com](http://www.Compositedesignsinc.com)

**Kit Contents**



**Parts Sheet**

**Qty 2**