

DMC 200S Profile

The versatility of the DMC 200S roof system makes it an ideal choice for low to steep slope applications. Performance-engineered to handle heavy-duty commercial and industrial projects, this 2" mechanically seamed structural metal roof system will meet or exceed most windload and government requirements from coast to coast. Concealed fasteners and floating clip systems reduce panel stress from changes in temperature and help maintain a smooth, uniform appearance. This product can also be curved for large barrel roofs or small canopies.

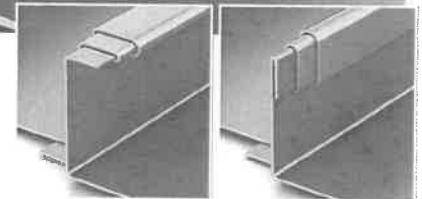
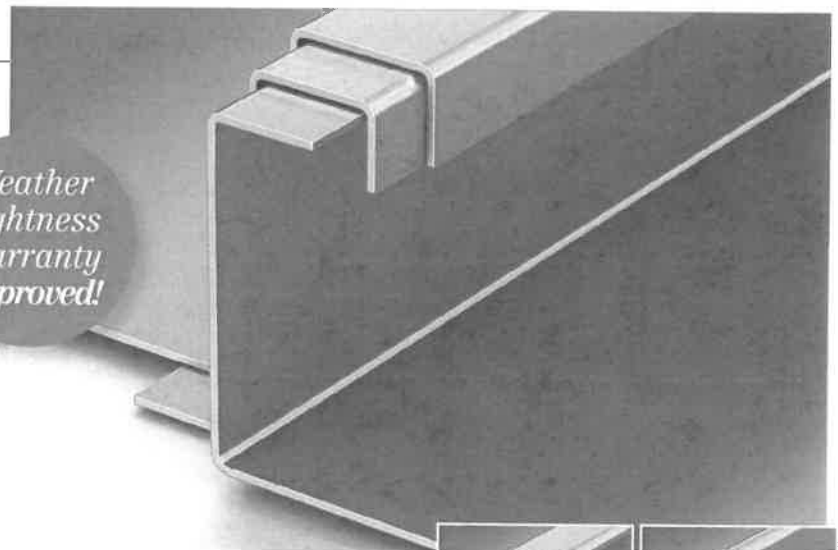
*Weather
Tightness
Warranty
Approved!*

Ideal Application:

Commercial

Institutional

Structural



Single lock panel

Double lock panel

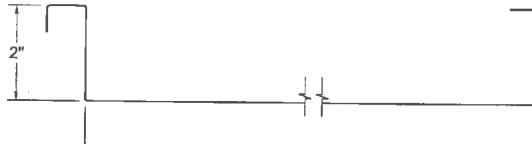


DMC 200S Profile

Available widths:

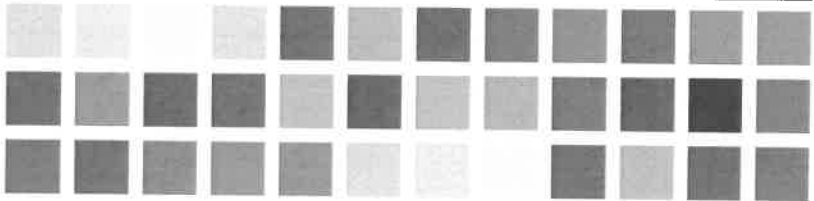
12", 14", 16" or 18"

*Drexel Metals design pressures, wind uplifts and test reports are for specific deck attachments, material gauges, clip spacing and panel widths. A complete specification and listing is available online at www.drexelmetals.com



Substrates available:

- Galvalume® – 22ga and 24ga
- Drexlume® – 22ga and 24ga
- Aluminum – .040"



Finishes and product warranty:

Available in a variety of coatings and colors by AkzoNobel. See the Drexel Metals color card for standard colors and paint specifications.



Galvalume® Substrate:
High-performance painted metal roofing product, carefully tensioned leveled for superior flatness.

35 YEAR WARRANTY
35-Year Non Pro-rated PVDF Paint Warranty

Aluminum Substrate:
High-performance painted metal roofing product, carefully tensioned leveled for superior flatness.

35 YEAR WARRANTY
35-Year Non Pro-rated PVDF Paint Warranty

Drexlume® Substrate:
Mill finished Galvalume® with a two-sided, clear acrylic finish.

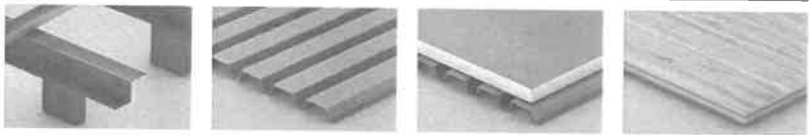
25 YEAR WARRANTY
25-Year Non Pro-rated Drexlume Warranty (Acrylic Coated Galvalume)

Production options:

Factory made or field rolled to exact lengths
Optional: striation, beads, pencil ribs
Available: Radius panel (single or double lock)

Installation:

Can be installed over open frame steel purlins, steel decking, steel decking with Polyiso or plywood decking.



Slope:

Minimum slope 1/2:12



Minimum Roof Pitch:
1/2:12 – low roof pitch

Allowable uniform:

Inward load table – psf

Deflection Ratio L/180

Span	2.00	2.50	3.00	3.50	4.00	5.00	5.00
24 ga x 16"	251	201	145	108	83	66	53

Outward load table – psf

Span	2.00	2.50	3.00	3.50	4.00	5.00	5.00
24 ga x 16"	106	95	83	72	60	49	37

Testing:

In accordance with:



- UL 580 Wind Uplift (Class 90)
- TAS 125 Wind Uplift
- UL 1897 Extended Phase Wind Uplift
- UL 2218 Class 4 Hail Impact
- UL 790 Class A Fire Rating
- UL Environmental – SRI Third Party Verified
- ASTM E1592 Uniform Static Air Pressure Uplift
- ASTM E1646 Water Infiltration
- TAS 100 Wind Driven Rain
- ASTM E1680 Air Infiltration
- ASTM E1886 Missile Impact
- ASTM 2140 Static Pressure Water Head
- Miami-Dade County Approved
- Florida Building Code Approved
- Texas Department of Insurance Approval

DrexelMetals
Roofing Systems + Custom Fabrication

www.drexelmetals.com

1234 Gardiner Lane, Louisville, KY 40213
888-321-9630 toll-free • 502-690-6174 fax

