



WELCOME TO OUR  
**KQ Newsletter**  
*we're so glad you're here!*

**LETTER FROM OUR PRESIDENT**

Save the date- the 2024 Annual KCSEA Educational Conference has been scheduled. We are excited to announce after a 10-year hiatus, we will be hosting our educational conference on Thursday June 13th and Friday June 14th at the Ramada by Wyndham Topeka Downtown Hotel & Convention Center. It will be a great opportunity to meet and network with child support professionals from around the State and participate in several training opportunities.

Sticking to our KCSEA mission "to support those who encounter the child support program through education, collaboration, and progress" our goal in 2024 is to reintroduce the who's who of Kansas Child Support. By holding our annual conference in Topeka, this allows the best opportunity to bring people together from all parts of the program including IVD, Non-IVD, Tribal, Federal, Contractors, and other partners outside the State of Kansas.

We will take steps back in time with our 2024 conference theme "Back to the Future," look at what we're doing today and what will carry the program into the future. This training opportunity will consist of speakers and panelists from each piece of the program, providing discussions on their involvement in the program and showing how we are intertwined together. We will hear about the tools we can use to collaborate to provide the best services possible to the families we serve.

Please read the article below regarding KCSEA membership. Annual dues must be paid to continue to receive the KQ along with new information regarding our Annual KCSEA Educational Conference. Visit our website [www.kcsea.org](http://www.kcsea.org) to complete the membership form and to pay your annual dues.



As the board continues to look to the future with plans for the 2024 KCSEA Educational Conference, the award of the Jim Robertson Scholarship, and many other recognition awards, we would like to hear from you.

**If you have not done so already complete a brief survey regarding KCSEA and what you would like to see in the future from the Association by [clicking here](#).**

To learn more about KCSEA, to become a member of KCSEA, to pay your annual dues, to become a sponsor of KCSEA, find additional information on the Jim Robertson Scholarship Fund, the 2024 KCSEA Educational Conference, and the KCSEA Board please visit [www.kcsea.org](http://www.kcsea.org).

Sincerely,  
Dustin R Whitaker, KCSEA President



# of being a member

THE KCSEA BOARD OF DIRECTORS HAS BEEN REESTABLISHED AND WE ARE WORKING TO BRING AWARENESS TO OUR GOALS AND REBUILD THE MEMBERSHIP OF THE ASSOCIATION. CURRENTLY, ANY INDIVIDUAL WHO PAID KCSEA MEMBERSHIP DUES FOR THE YEAR 2015, CONTINUES TO BE A MEMBER THROUGH DECEMBER 31, 2023. IF YOU ARE UNSURE IF YOU PAID DUES IN 2015, PLEASE CONTACT [ADMIN@KCSEA.ORG](mailto:ADMIN@KCSEA.ORG) TO INQUIRE.

WITH A KCSEA MEMBERSHIP, YOU GET:

- THE KANSAS QUARTERLY (KQ) NEWSLETTER EMAILED TO YOU ON A QUARTERLY BASIS, HELPING YOU TO STAY UP TO DATE ON PROGRAM INFORMATION AND HAPPENINGS IN THE CHILD SUPPORT COMMUNITY
- TO BE A VOTING MEMBER OF KCSEA, ALLOWING YOU TO PARTICIPATE IN BOARD ELECTIONS AND VOTE ON BY-LAW CHANGES FOR THE ASSOCIATION
- ELIGIBILITY FOR YOURSELF OR A FAMILY MEMBER TO APPLY FOR THE KCSEA JIM ROBERTSON ANNUAL SCHOLARSHIP
- NETWORKING OPPORTUNITIES
- ENHANCED EDUCATION THROUGH OUR ANNUAL CONFERENCE
- TO BUILD A SENSE OF CAMARADERIE AND HAVE FUN WITH FELLOW CHILD SUPPORT STAFF
- REDUCED CONFERENCE ATTENDANCE RATES
- THE ABILITY TO BE NOMINATED FOR THE KCSEA BOARD OF DIRECTORS
- CASE LAW AND POLICY UPDATES

ANNUAL DUES HAVE BEEN \$10 FOR MANY YEARS AND WILL REMAIN AT \$10 THROUGH THE END OF 2023. EFFECTIVE JANUARY 1, 2024, MEMBERSHIP DUES WILL INCREASE TO \$15 ANNUALLY TO HELP SUPPORT RISING COSTS. MEMBERSHIPS RUN UNTIL THE END OF THE CALENDAR YEAR DURING WHICH DUES ARE PAID. TO BECOME A MEMBER OF KCSEA, VISIT THE [WWW.KCSEA.ORG](http://WWW.KCSEA.ORG) MEMBERSHIP PAGE.

## Sign up to Become a Member

[FIND OUT MORE](#)

## Jim Robertson Scholarship

[FIND OUT MORE](#)

# Get to Know Your Board Members

**NICOLETTE BENNETT**  
**OLATHE, KS**  
**25 YEARS**



**JOHNSON COUNTY  
COURT TRUSTEE**

Having grown up in California and Hawaii, I have embraced midwestern values raising 3 sons with my husband of 29 years. An avid sports fan, I am a season ticket holder for Sporting KC and also enjoy watching the Chiefs and Royals games. I play in an adult soccer league and have been a member of the Boy Scouts of America for 20+ years, having attended Sea Base, Northern Tier, Philmont and Camp Bartle and Camp Naish. I have a B.S. in a Commerce in Economics from Santa Clara University and worked for IBM as a Systems Engineer before moving to the Midwest to get married and raise a family. I received my JD from the University of Arkansas at Little Rock School of Law; am licensed in Kansas and inactive in Missouri. Participating in Douglas County Legal Aid Society while a visiting student at the University Kansas School of Law, inspired me to commit to a career in public service that began at the Department for Children and Families (then SRS) Child Support Services. I was a case worker, member of a specialized team migrating from KESSEP to KAECSES, Supervising Attorney for Northeast DCF, assigned to then CSS Administration and appointed Deputy Director for DCF CSS. After more than 17 years at the State, I left my position as a Deputy Director of the Title IV-D program in 2016 when I was appointed Trustee for the 10th Judicial District Court (Johnson County). I am a member and former President of Kansas Child Support Enforcement Association, member of the National Child Support Enforcement Association and the Western Intergovernmental Child Support Engagement Council as well as the Johnson and Douglas County Bar Associations. I have presented numerous CLEs regarding support services.

Hello! My name is Sarah Delgado, and I am from Wichita, KS. I have been with the Department for Children and Families for 16 years, having spent 11 years with Child Support Services (including one year with Veritas HHS) and six years with EES Employment Services. I am currently in the Training and Outreach division. I have always been very passionate about the child support program and the families we serve. Some of my best memories and friendships have been made while working in CSS. It is great being back on the KCSEA board and serving alongside those I served with many years ago. The KCSEA conference is a great way to network and connect with colleagues, share ideas, learn from child support professionals, and strengthen the child support community. I encourage everyone to participate in this great organization by attending the conference and serving on the board.

**SARAH DELGADO**  
**WICHITA, KANSAS**  
**11 YEARS**



**CSS ADMINISTRATION**  
**PUBLIC SERVICE EXECUTIVE II**



**JESSICA DIECKHOFF**  
**OLATHE, KANSAS**  
**14 YEARS**

I am Jessica Dieckhoff. I am a current board member for KCSEA and have previously served on the board as Treasurer and a board member. I currently work for CSG Government Solutions as a Staff Consultant. Prior to joining CSG, I worked in Kansas Child Support program for 12 years, filling many roles throughout my time. I am looking forward to serving on the board again and having the opportunity to learn, educate, and collaborate with the staff in KS Child Support and its partners.

**CSG GOVERNMENT SOLUTIONS**  
**STAFF CONSULTANT**

# Get to Know Your Board Members

I've worked in the IV-D Child Support Program since August 2000 and with YoungWilliams, PC since 2005. In my years with child support, I've worked in many roles starting with our clerical team, then as a Legal Specialist, a Lead Legal Specialist, Quality Assurance and most recently as a Supervisor. In 2013 when full service was implemented, I worked with our Establishment Team and then in Enforcement. In October 2021 with the new contract, I started a new journey as the Customer Service Supervisor. Every role I've had in child support has been an amazing learning experience. I'm excited to be a member of the board as we bring KCSEA back and we get to share our experiences with all the new faces.

**STACEY FITCH  
TOPEKA, KANSAS  
23 YEARS**



**YOUNGWILLIAMS  
SUPERVISOR**



**TERRI GREER  
OLATHE, KANSAS  
16 YEARS**

**CSS ADMINISTRATION  
DEPUTY DIRECTOR**

I have worked in the Kansas IV-D Child Support Program since August of 2007 in many roles. I was a previous board member, and I am excited to serve on the board again. I look forward to engaging with other child support professionals and partners to share ideas and innovations to move the program forward.

I have so many fond memories of getting to know my peers throughout the entire state and also getting a chance to relax and have some fun with my work family. I remember the year there was a tornado in Junction City during our evening retreat and were directed to gather in a back room of the hotel. I don't think anyone was too nervous about the tornado because the party continued in the back room of the hotel. My goal is to bring a sense of unity among all child support workers and help current staff develop and foster friendships that I have cherished so much through my 24 years in child support. I would also like to provide helpful trainings of the child support program and help staff see the big picture. Share success stories and show the impact we have on the families we serve.

**KRISTIE HAYNES  
OLATHE, KS  
24 YEARS**



**CSG GOVERNMENT SOLUTIONS  
STAFF CONSULTANT**



# Get to Know Your Board Members



**SHANNON KROH**  
**TOPEKA, KANSAS**  
**13 YEARS**

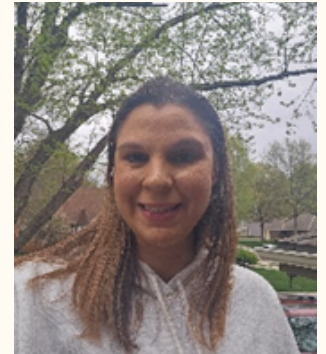
**MAXIMUS**  
**INTAKE TEAM SUPERVISOR**

Hey all. I've been with CSS for almost 13 years in multiple roles in multiple cities and areas. One of my favorite memories from past KCSEA's is getting to catch up with some old friends and getting to put faces with names on other new friends. I'm hoping that restarting KCSEA will foster better relationships between staff of contractors and NIVD staff.

My name is Carina Lee and I live in Shawnee, KS. I am the Operations Center Manager for the Overland Park office and have been in child support for 17 years. I have been in several different roles within the program. I have been to KCSEA conferences in the past and have always had a great time while meeting new people and learning about many different topics and resources available for the child support program. What I hope to accomplish with the KCSEA restart is to share new ideas, best practices, and provide new and improved tools and resources that will help all of us in our important everyday work that we do.

**CARINA LEE**  
**OVERLAND PARK, KANSAS**  
**17 YEARS**

**YOUNGWILLIAMS**  
**OPERATIONS CENTER MANAGER**



**TULASI LONG**  
**TOPEKA, KANSAS**  
**17 YEARS**

**CSS ADMINISTRATION**  
**PROGRAM CONSULTANT**

I have worked in several different roles in child support services for 17 years. I worked in CSS Administration as a secretary, intergovernmental caseworker, and assistant to the IV-D director. I also worked for YoungWilliams as a legal assistant and HR Manager at KPC. Now I am back in CSS Administration working in the Self-Assessment Unit. I loved every position I have held in my child support career. I am currently serving on the board as Secretary and previously served as a board member. I am looking forward to bringing KCSEA back. Conferences are a great place to learn and network. I look forward to meeting new faces and provide continuing education to child support staff so we can continue to serve the families and children of Kansas.

# Get to Know Your Board Members

Hello everyone! I am Lori Myers and have worn many different hats over the years that include Legal Secretary, Enforcement Specialist, Finance Specialist, Supervisor for YoungWilliams and now Manager/Liaison in CSS Administration. Kansas Child Support Services is very special to me, and I have enjoyed working with so many wonderful people as well as the families we serve. While I have attended many conferences over the years, this is my first as a board member. This conference has always been my favorite as you get to meet the people that you generally only visit with over email. I believe that together, we can do amazing things for Kansas families!



**LORI MYERS**  
**28 YEARS**

**CSS ADMINISTRATION**  
**CENTRAL RECEIVABLES UNIT**  
**ADMINISTRATOR**  
**TRIBAL AND KPC LIAISON**

I'm originally from Halstead, Kansas. I have been married for 28 years and my husband and I have two wonderful grown children, Mikel and Payne I went to college and law school at Washburn in Topeka and have been in the southeast corner of Kansas since 1992. After about five years as a prosecuting attorney, in 1997 I became a Kansas DCF contract attorney. In 2010, I was promoted to Project Manager, handling cases worked out of the Independence and Columbus offices. In 2013, the El Dorado office joined my group and few years later, Dodge City and Great Bend. With the 2021 DCF contract, I now supervise all YoungWilliams legal staff and 9 different YoungWilliams offices with 22 attorneys and 35 legal support staff. I remember when I first started in child support thinking, "wow, these old people really know stuff." Decades later, and now I'm one of the old ones. I am so excited about the KCSEA restart as it is such a great platform for sharing knowledge and building relationships. I was a board member and president elect when DCF stopped participating with KCSEA and I am super excited to be back on the board. I look forward to meeting so many new children support professionals at our future conferences.

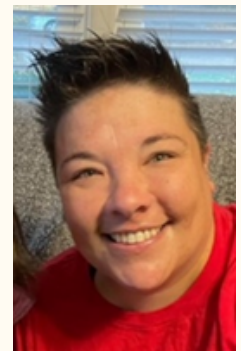


**BRANDI RIDGEWAY**  
**PITTSBURG, KANSAS**  
**26 YEARS**

**YOUNG WILLIAMS**  
**LEGAL PROJECT MANAGER POSITION**

Hello! My name is Ali Robertson. I am proud to have been asked to revive KCSEA from its 9-year sabbatical, an association my father Jim Robertson started in 1987. I have full faith in the members chosen to represent Kansas Child Support Educational Association 2023. Their diverse knowledgebase and dedication to the program, most with past KCSEA experience, is second to none. I was born and raised in Topeka, KS. I graduated from Topeka High School and am a Pittsburg State and University of Phoenix Alumni. I have worked for Child Support Services in Administration for 13 years and have had extremely diverse duties. I have been a Medical Support Specialist, Administrative Specialist, Trainer, Table Maintenance and Employer Database subject matter expert (SME), have provided the creation and maintenance of CSS documents and outreach materials, a Caseload Maintenance subject matter expert (SME), a Supervisor for the Employer Outreach and Special Collections Units, a Project Analyst and much more. I have worked on various RFP's for Full-Service, Call Center and Payment Center contracts, grants for special projects such as the fatherhood initiative, and have been the liaison between CSS and KDOL which resulted in the creation of a new hire commercial aired across the state of Kansas. Currently my focus is on reviewing and updating the language in all CSS documents, expanding the usage of texting with customers, and combining the policy and procedure manual. I have enjoyed attending WICSEC, ERICSA and KCSEA conferences where I have been able to network with many child support professionals and learn how Kansas can continue to provide the best service possible for children and families!

**ALI ROBERTSON**  
**TOPEKA, KANSAS**  
**13 YEARS**



**CSS ADMINISTRATION**  
**PROJECT ANALYST**

# Get to Know Your Board Members



**KATIE ROLFE**  
**TOPEKA, KANSAS**  
**8 YEARS**

My name is Katie Rolfe. My passion for child support started in April of 2015 when I was hired to work for YoungWilliams as a child support specialist in enforcement. From there I moved into finance and eventually into a supervisor position with the intake team. In June of 2022 I joined CSS Admin, where I currently work on the systems team. Having the opportunity to help families is what first attracted me to working in child support. I have met some truly amazing co-workers over the past 8 years and my favorite thing about working in this industry is knowing that we all share a passion for child support and helping families in need. I'm honored to be a member of the KCSEA board and am looking forward to this new journey.

**KCSS ADMINISTRATION**  
**BUSINESS PROJECT MANAGER**

Hello everyone! My name is Dani and I am currently working with Maximus. I live in Hays, Kansas. I have heard so many great things about KCSEA but this is my first year on the board! My hope with KCSEA relaunching is the building of community, unity, and growth in relationship between staff members at every vendor/program. I am also excited to see KCSEA benefit young adults through scholarships!



**DANI WILLIAMS**  
**HAYS, KANSAS**  
**7 YEARS**

**OPERATIONS ANALYST**  
**MAXIMUS**



**AMY SHAUM**  
**WILLIAMSBURG, KANSAS**  
**24 YEARS**  
**SYSTEMS & METHODS, INC.**  
**SENIOR PROPOSAL WRITER**

Hey there Kansas child support staff! I am Amy (Burgoon) Shaum, current KCSEA Treasurer, previously serving on the KCSEA Board as a member and the Treasurer for several years. For the past two years, I've worked as a Senior Proposal Writer for Systems & Methods, Inc. (SMI), a national company specializing in SDUs and debit card disbursement. Before that, I was in the Kansas Child Support program for over 20 years; I started in intake in 1999 and did a bit of almost everything along the way. Kansas child support is and will always be near and dear to my heart. I feel truly fortunate to be serving on the KCSEA Board and be part of seeing KCSEA come alive again! I will use my knowledge and experience to support KCSEA in providing education to staff and creating opportunities for collaboration in the program and with partners.

My name is Dustin Whitaker, I have worked in child support services for over 20 years. I have held several roles and positions within the Kansas Child Support Program both IVD and NIVD. I currently work for Auctor Corporation in the Client Services Division. I have been a KCSEA member for several years and this will be my second time serving on the board of directors. I have served on a few committees with the National Child Support Enforcement Association (NCSEA) as well as presenting several sessions with NCSEA, ERICSA and WICSEC. I believe KCSEA is a fantastic training conference which allows Kansas Child Support professionals to come together and to better serve the families of our great state. I am looking forward to meeting new faces and working with everyone within the program.



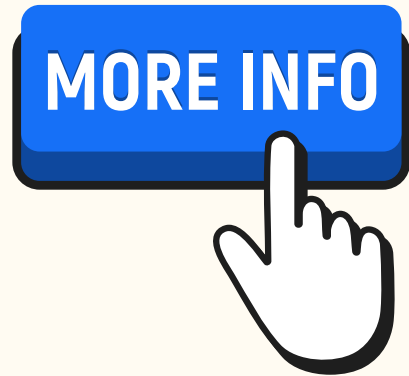
**DUSTIN WHITAKER**  
**TOPEKA, KANSAS**  
**21 YEARS**

**AUCTOR CORP.**  
**CLIENT SERVICES**  
**MANAGER**

# News from KPC

EFFECTIVE AUGUST 23, 2023 THE NEW KPCPAY IS ACTIVE!

KPCPAY ENABLES INDIVIDUALS TO PAY CHILD SUPPORT OBLIGATIONS 24 HOURS A DAY/ 7 DAYS A WEEK THROUGH A SECURE, ELECTRONIC PAYMENT PORTAL. USE A COMPUTER, A TABLET, OR A MOBILE PHONE FROM ANYWHERE, INITIATE AND SUBMIT A CHILD SUPPORT PAYMENT.

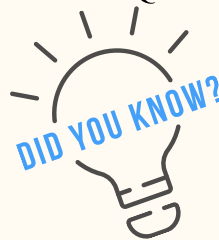


**\* A PROCESSING FEE WILL BE CHARGED FOR CREDIT OR DEBIT CARD PAYMENTS**

## National Tribal Child Support Association (NTCSA)

THE 2023 NTCSA CONFERENCE WAS HELD IN GREEN BAY, WISCONSIN AND WAS HOSTED BY THE ONEIDA NATION. MARCIE MARTINEZ, TERRI GREER, AND LORI MYERS ATTENDED. THIS ANNUAL CONFERENCE PROVIDES AN OPPORTUNITY TO ENGAGE WITH OTHER PROFESSIONALS TO LEARN THE MOST RECENT INITIATIVES IN TRIBAL AND STATE CHILD SUPPORT.

IT'S ALWAYS A PLEASURE TO ATTEND AND EXPERIENCE THE CULTURE OF OUR NATIVE AMERICAN PARTNERS. THE CONFERENCE KICKED OFF WITH TRADITIONAL SONGS AND DANCES. THE ENTIRE CROWD JOINED IN THE DANCING. IN A MORE SOLEMN SESSION, THE TRADITION OF SMUDGING WENT AROUND THE ROOM. SMUDGING IS A NATIVE AMERICAN RITUAL THAT LINKS SMOKE WITH SPIRITUALITY IN REMARKABLE WAYS. THIS IS A COMMON CEREMONIAL RITUAL AMONG INDIGENOUS PEOPLE, HELD CLOSELY WITHIN THESE CULTURES TO PURIFY, SPIRITUALLY CLEANSE, RID PHYSICAL SPACES OF NEGATIVE ENERGY, AND BLESS.



1. TRIBES ARE A SEPARATE PEOPLE AND HOLD THEIR OWN JURISDICTION. IN OTHER WORDS, A TRIBE SHOULD BE TREATED JUST LIKE ANY OTHER STATE.
2. TRIBES STILL USE IN KIND ORDERS. WHEREIN GOODS OR ACTIONS ARE TRADED IN PLACE OF MONEY.
3. TRIBES ARE NOT REQUIRED TO USE UIFSA DOCUMENTS. THEY ARE ENCOURAGED TO DO SO, BUT IF THEY DO NOT, A STATE CANNOT REJECT THEIR REQUEST.
4. ALL INFORMATION REGARDING A TRIBE CAN BE FOUND ON THE INTERGOVERNMENTAL CASE REGISTRY (IRG), JUST LIKE STATES.

IN KANSAS, WE CURRENTLY WORK CLOSELY WITH THE PRAIRIE BAND POTTAWATOMIE NATION, THE KICKAPOO TRIBE IN KANSAS, AND THE DELAWARE TRIBE OF INDIANS. OUR RELATIONSHIP WITH THESE TRIBES HAS GROWN OVER THE LAST FEW YEARS AND WE CONTINUE TO WORK TOWARDS BETTER COLLABORATION BETWEEN KANSAS AND THE TRIBES.



# State Fair



(LEFT TO RIGHT) IS RITA MORA (DCF) AND DEBBIE BREITBACH (YW).



(LEFT TO RIGHT) IS DEBBIE BREITBACH (YW), ROBIN SHULTZ (YW), MICHELLE LANG (YW), RITA MORA (DCF), AND TERRI MARTINEZ(DCF).

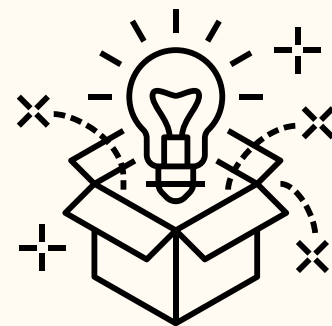
# Western Intergovernmental Child Support Engagement Council (WICSEC)

BY MELANIE ALDERSON

WESTERN INTERGOVERNMENTAL CHILD SUPPORT ENGAGEMENT COUNCIL (WICSEC), CELEBRATED 40 YEARS THIS SUMMER BY HOSTING THEIR ANNUAL CONFERENCE IN PORTLAND, OREGON FROM SEPTEMBER 17TH THROUGH THE 21ST. COURTNEY SWEENEY, KATIE ROLFE, AND I WERE GUIDED BY OUR FAITHFUL LEADER, KANSAS' IV-D DEPUTY DIRECTOR TERRI GREER, DURING OUR WEEK OUT-OF-STATE. AS A FIRST-TIME CONFERENCE-GOER, I CAN CONFIRM--THE RUMORS ARE TRUE. IT IS A LIFE-CHANGING EXPERIENCE TO BE SURROUNDED BY NEARLY 1,000 PEOPLE WHO ALL HAVE THE SAME (OR SIMILAR) CAREER AND ARE SO PASSIONATELY CONNECTED. THE ENERGY WAS ELECTRIC, AND THE ATMOSPHERE WAS ADDICTIVE. THE THEME FOR 2023 WAS "THINK OUTSIDE," AND THE BEAUTY OF THE PACIFIC NORTHWEST MADE IT DIFFICULT TO WANT TO BE ANYWHERE BUT OUTSIDE! MY GOODNESS! WHAT A MAJESTIC PLACE. WHILE INSIDE THE HILTON DOWNTOWN PORTLAND, VISITORS OF WICSEC HAD NUMEROUS OPPORTUNITIES TO EMBRACE THE EXPERIENCE BY CHOOSING PLENARIES AND WORKSHOPS CATERED TOWARD INDIVIDUAL ROLES IN THEIR PROGRAM. THE SPEAKERS FOR EACH SESSION WERE EXPERTS IN THEIR FIELD WHO BROUGHT IMMENSE KNOWLEDGE AND INSPIRATION WITH EACH STORY AND SCENARIO PRESENTED. MUCH WAS LEARNED ABOUT HOW WE CAN ALL MAKE BIGGER IMPACTS WORKING WITH CLIENTS AND COWORKERS WHEN WE MEET PEOPLE WHERE THEY ARE, AND TO MEET THEM WITH LOVE. NOT EVERY SITUATION AND CIRCUMSTANCE LOOK THE SAME, SO LISTENING TO EACH OTHER AND THROWING AWAY JUDGMENT CAN MEET OUR GOALS QUICKER THAN JUST DOING WHAT WE HAVE ALWAYS DONE.

THE HIGHLIGHT OF MY EXPERIENCE AT WICSEC 2023 WAS BEING HONORED TO PRESENT WITH COURTNEY SWEENEY AS CO-AMBASSADOR FOR KANSAS AT THE IJ FAIR. THIS WAS AN OPPORTUNITY FOR EACH PARTICIPATING STATE TO NETWORK, MINGLE, AND GRAB UP AS MANY OUTREACH MATERIALS OR "SWAG" AS OUR PORTLAND TOTE BAGS WOULD HOLD. THIS YEAR, OUR STATE OF KANSAS-BRANDED SUNFLOWER SEEDS (FOR PLANTING, NOT EATING) WERE A HIT. IT WAS A LIVELY AND BUSTLING TIME MEETING THE OTHER STATES, AND WHAT GRACIOUS HOSTS THE PEOPLE OF OREGON AND WASHINGTON CHILD SUPPORT WERE.

"THINK OUTSIDE" MEANS WE MUST BEGIN LOOKING THROUGH DIFFERENT LENSES TO ACHIEVE OUR OUTCOMES. WICSEC ALSO ENCOURAGED EACH ONE OF US TO COMMUNICATE AND RELATE WITH OTHERS MORE EFFECTIVELY TO REACH OUR GOAL OF ASSISTING FAMILIES THE BEST WAY WE CAN. I AM SURE THIS WON'T BE MY LAST ENCOUNTER WITH WICSEC, AS I THOROUGHLY ENVELOPED MYSELF IN THIS EXPERIENCE TO BETTER MYSELF AS A CHILD SUPPORT PROFESSIONAL, A CO-WORKER AND ALL-AROUND BETTER HUMAN. UNTIL NEXT TIME... TAHOE, ANYONE?



## November 2023 Child Support Report

[FIND OUT MORE](#)

# IN FOND MEMORY OF AUDREY B. "AUDIE" MAGAÑA (1956-2021)

BY BRANDI RIDGSEWAY



AS WE START OUR CAREERS, WE TRY TO GRAVITATE TOWARDS A FEW EXPERIENCED PROFESSIONALS IN HOPES OF LEARNING FROM THEIR VAST KNOWLEDGE AND EXPERTISE. WE AREN'T ALWAYS ABLE TO FIND SUCH MENTORS, BUT THERE ARE TIMES WE ARE FORTUNATE ENOUGH TO HAVE A RARE GEM TO HELP TEACH, GUIDE AND INSPIRE US. AUDREY (AUDIE) MAGAÑA WAS ONE OF THOSE RARE GEMS, AND THE CHILD SUPPORT PROFESSION IS POORER DUE TO HIS LOSS.

I FIRST MET AUDIE IN THE LATE 1990S. WHILE WE WORKED FOR COMPETING CONTRACTORS AT THE TIME, AUDIE WAS ALWAYS AVAILABLE TO DISCUSS UNUSUAL LEGAL SITUATIONS. AUDIE JOINED YOUNGWILLIAMS IN 2013 AS A PROGRAM MANAGER FOR THE CENTRAL KANSAS OFFICES. FOR MORE THAN FOUR DECADES, AUDIE WAS RELIED UPON BY MANY CHILD SUPPORT PROFESSIONALS TO PROVIDE LEGAL SUGGESTIONS AND POLICY ADVICE.

AUDIE GREW UP NEAR ABILENE, KANSAS, ON THE FAMILY FARM. HIS WAS ONE OF THE VERY FEW HISPANIC FAMILIES IN KANSAS AT THE TIME. WHILE ATTENDING KU LAW SCHOOL, AUDIE STARTED A FIREPLACE CLEANING BUSINESS SO HE COULD SUPPORT HIMSELF AND HIS WIFE, SUSIE.

AUDIE BEGAN HIS ATTORNEY CAREER IN THE LATE 1970S AS ONE OF THE FIRST ATTORNEYS HIRED BY KANSAS TO ESTABLISH AND ENFORCE CHILD SUPPORT ORDERS. HE STAYED IN CHILD SUPPORT AS A DCF ATTORNEY, COURT TRUSTEE, OR A CONTRACT ATTORNEY UNTIL HIS UNTIMELY DEATH IN MARCH 2021.

AUDIE WAS VERY OPEN ABOUT HIS LOVE OF HIS WIFE, DAUGHTERS, AND GRANDCHILDREN. HIS FACE WOULD GLOW, AND HIS EYES WOULD SPARKLE AS HE SPOKE OF THEM. HE WAS SO VERY PROUD OF HIS FAMILY AND SPOKE OF THEM OFTEN.

AUDIE ALSO VERY MUCH ENJOYED HAVING A GOOD TIME WITH THE CHILD SUPPORT FAMILY. MANY OF US HAVE FOND MEMORIES OF AUDIE DURING KCSEA CONFERENCES. WONDERFUL CONVERSATIONS AND WITTY BANTER; LINE DANCING IN AUSTIN; AND HIS UNFORGETTABLE KARAOKE RENDITION OF A FAVORITE BILLY SQUIRE SONG.

BUT THERE WAS ALSO THE SERIOUS AND PROFESSIONAL SIDE.

I WAS FORTUNATE ENOUGH TO SPEAK DENNIS HOFFMAN, A CO-FOUNDER OF KCSEA, A LONG-TIME MEMBER OF THE KANSAS CHILD SUPPORT FAMILY AND CLOSE FRIEND OF AUDIE'S. ALL OF US WHO KNEW AUDIE WOULD AGREE WITH DENNIS'S ASSESSMENT THAT AUDIE WAS "SPECIAL, DEDICATED, AND LOYAL. A HARD WORKER, YET PATIENT. EVERYONE LOVED WORKING WITH HIM."

DENNIS HIRED AUDIE AS A DCF STAFF ATTORNEY FOR SALINE COUNTY IN THE LATE 1970'S. PER DENNIS, AUDIE SPENT THE ENTIRE WORKDAY IN HIS OFFICE STUDYING EVERY PIECE OF LEGISLATION, REGULATION, AND CASE LAW HE COULD GET HIS HANDS ON. FOR WEEKS, DENNIS WOULD ASK AUDIE IF HE WAS READY TO START FILING ENFORCEMENT ACTIONS, AND AUDIE'S REPLY WAS ALWAYS, "NO, NOT YET." AFTER A COUPLE OF MONTHS OF HEARING "NOT YET" FROM AUDIE, DENNIS DECIDED IT WAS TIME FOR A TALK. HE SAT DOWN WITH AUDIE TO FIND OUT WHAT THE HOLD UP WAS, ONLY TO LEARN THAT THE DAMN HAD BROKEN, AND AUDIE HAD BEEN FILING SO MANY ENFORCEMENT ACTIONS THAT THE JUDGE WAS COMPLAINING.



# MEMORIES WITH AUD

## AUDIE DOES CARTWHEELS DURING A STRESS RELIEF CONFERENCE.



KCSEA BOARD MEMBER AND TREASURER, AMY SHAUM, WAS TRAVELING THROUGH SALINA A FEW MONTHS AFTER AUDIE PASSED AWAY. SHE STOPPED AT A LITTLE RESTAURANT AND ENDED UP HAVING A CONVERSATION WITH THE OWNER. WHEN AMY MENTIONED WHAT LINE OF WORK SHE WAS IN, THE OWNER'S FACE LIT UP AND HE ASKED HER IF SHE HAD KNOWN AUDIE. TURNED OUT, AUDIE HAD WORKED FOR THE OWNER'S MOTHER WHEN HE WAS YOUNG AND YEARS LATER, HAD HELPED THE OWNER WITH CHILD SUPPORT MATTERS. THE OWNER HAD A GREAT DEAL OF APPRECIATION TOWARDS AUDIE AND RESPECT FOR THE KANSAS CHILD SUPPORT AGENCY BECAUSE OF HIS EXPERIENCE WITH AUDIE. MANY OF US WORKED CLOSELY WITH AUDIE, AND CERTAINLY, MORE THAN A FEW STORIES AND BEERS HAVE BEEN SHARED OF THE YEARS. HE IS GREATLY MISSED AS A CO-WORKER, LEADER AND FRIEND.



AUDIE WITH (L TO R) BRANDI RIDGEWAY, NICOLETTE BENNETT, KRISTIE HAYNES, KAREN SEYLER, AND ALI ROBERTSON AT A NATIONAL CHILD SUPPORT CONFERENCE IN AUSTIN, TEXAS.



L TO RIGHT: DUSTIN WHITAKER, ASHLEY THORNBRUGH, LEE FISHER, NICOLETTE BENNETT, BRANDI RIDGEWAY, AUDIE, AND JUDY ROTH AT A NATIONAL CHILD SUPPORT CONFERENCE IN SCOTTSDALE, ARIZONA.