



**RUSSELL STONE PRODUCTS -- CLASS II APPROVED
SANDSTONE and TYPE III EPD STONE**

We have recently completed providing stone for the Palmer Museum of Art located in the Arboretum at Penn State. It is the largest art museum collection between Philadelphia and Pittsburgh. The Museum will open in the spring of 2024. We wanted to share some of the construction photos with you. The above photo is a artist rendition of the completed project.





We provided panels of our Class II Approved Roaring Run Sandstone for the exterior of the project. The honed panels were 2" thick ,16" wide, and ranged in length from 2 to 5 feet. The design concept was to clad the building in regional sandstone evoking the geology of central Pennsylvania.



We provided approximately 58000 square feet of our sandstone for this project. We have been questioned over the years with what is our ability to provide large quantities of material for a project? In 2023 we have produced over 150,000 square feet in panels, 30,000 square feet of polished and sandblasted pavers, as well as over 2800 ton of other building stone, datum blocks, and landscape material for numerous projects in the United States and Canada.

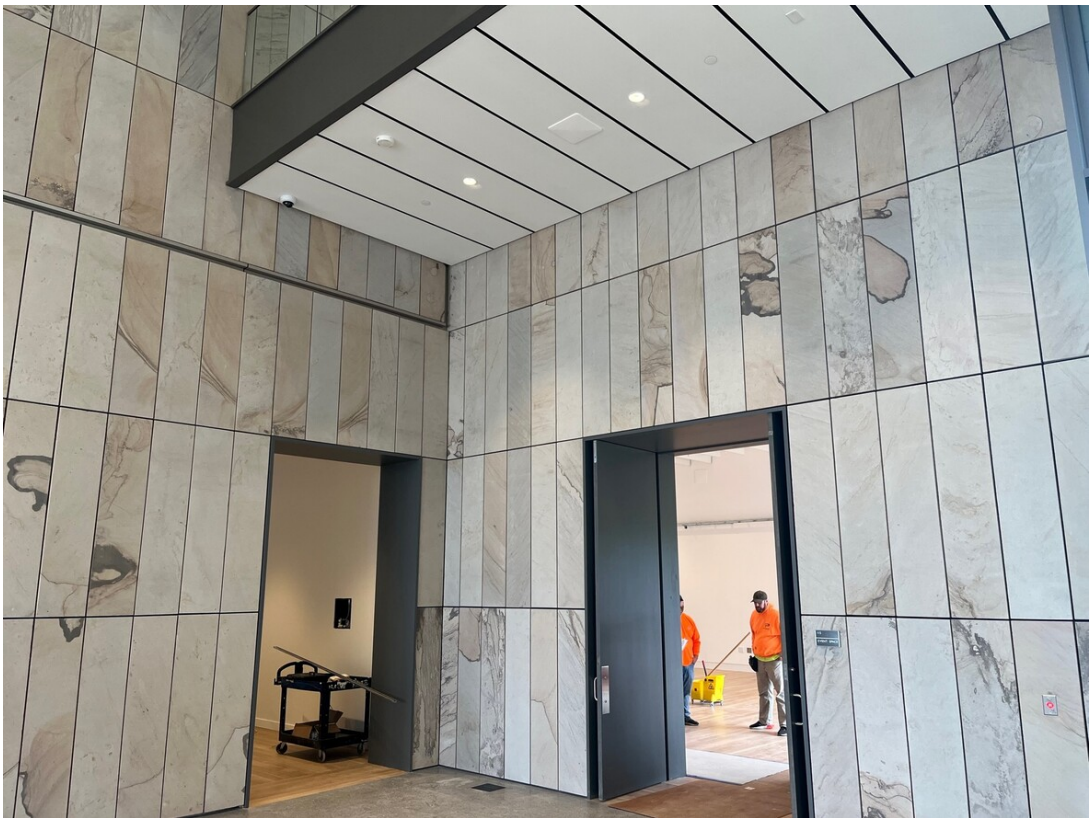


The building has a footprint of 73000 square feet and was designed by Allied Works. It is a high performance building currently targeting LEED Silver certification under the LEED new construction certification system. Our stone is classified as a Type III EPD Stone.





Caretti Masonry Inc. of Camp Hill Pa. provided the masonry work. Holder Construction was the general contractor. The landscape architect was Reed Hilderbrand. Ground breaking was in August of 2021 with opening for the general public scheduled for spring of 2024.

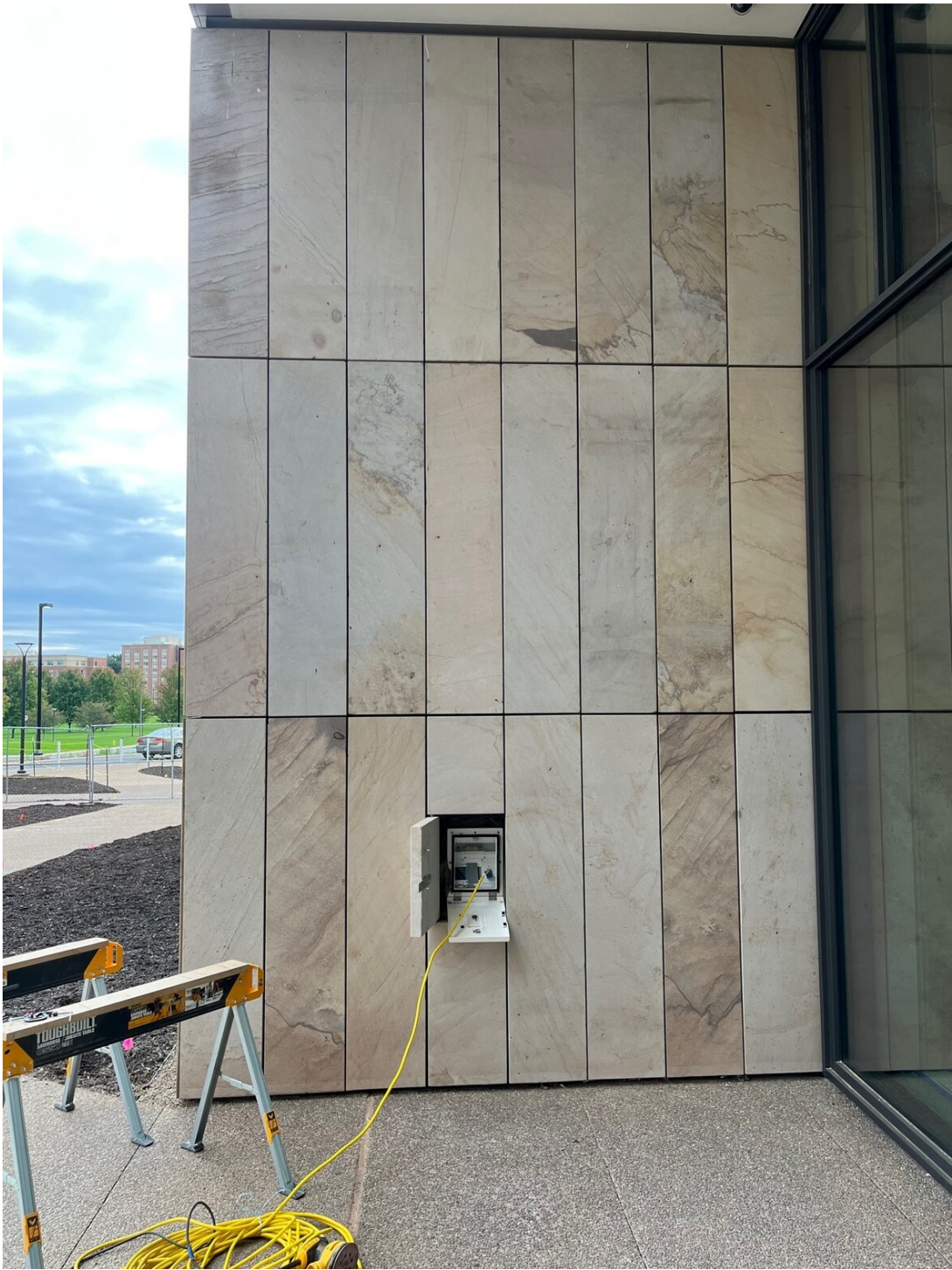




Several locations on the interior of the building also utilized our sandstone. We provided approximately 3800 square feet in panels that were 1 1/2" thick, 16" wide, and from 2 to 5 feet in length.

The following are photographs at the early stages of construction









The picture above is another projection of what the building will look like when all construction and landscaping is completed. We will provide everyone with more photographs at the completed stage in the spring.

Remember, no project is too big or too small. We can handle your project of any size with our world renowned team. Call us today with questions or ideas you might have for any upcoming projects.

Let us help you get your next project underway.

Dan Russell &

The Russell Stone Product Family

814-236-2449

www.russellstoneproducts.com

©2023 Russell Stone products | 2640 Greenville Pike, Grampian PA 16838

Like 

[Web Version](#)

[Preferences](#)

[Forward](#)

[Unsubscribe](#)

Powered by
[GoDaddy Email Marketing](#)®