

ALPHA GROUP OF COMPANIES

VIGNESH INDUSTRIES PVT LTD | ALPHA ENTERPRISES, CHENNAI | VPS ENTERPRISES

ISO 9001:2015 CERTIFIED

ECONOMIC-ELEGANT-EXPEDITIOUS CONSTRUCTION

MODERN INFRASTRUCTURE FOR THE TRENDY WORLD

LEADING MANUFACTURER OF PREFABRICATED/PRE-ENGINEERED PRODUCTS | UPVC WINDOWS/DOORS | TRADING

ABOUT US

- ALPHA ENTERPRISES HAS BEEN IN OPERATION SINCE 1997, AND HAS ACHIEVED REMARKABLE SUCCESS SINCE ITS INCEPTION. THE COMPANY WAS FOUNDED BY LATE.SHRI.R.SUNDARARAMAN WITH A VISION TO PROMOTE EQUALITY. TODAY, ALPHA ENTERPRISES IS A LEADING MANUFACTURER OF PREFABRICATED PRODUCTS SUCH AS CABINS, PORTABLE HOUSES, TOILETS, SITE OFFICES, AND UPVC WINDOWS AND DOORS, AND IS ALSO AN AUTHORIZED DISTRIBUTOR FOR SINTEX STORAGE TANKS AND CASTROL LUBRICANTS. THE COMPANY PRIDES ITSELF ON DELIVERING HIGH-QUALITY PRODUCTS AND SERVICES, AND HAS A STRONG REPUTATION FOR TECHNICAL EXPERTISE, MODERN INFRASTRUCTURE, AND EXCEPTIONAL FABRICATION, DELIVERY, AND INSTALLATION SERVICES.

**PRODUCT
RANGE**

PREFABRICATION

**UPVC DOORS AND
WINDOWS**

**TRADING AND
DISTRIBUTION**

PREFABRICATION

BENEFITS OF PREFAB CONSTRUCTION

- EXTREMELY DURABLE MATERIALS
- FASTER CONSTRUCTION
- LOW COST
- QUALITY CONTROL PRIOR TO CONSTRUCTION
- LOW RISK FACTORS
- SIMPLE CONSTRUCTION PROCESS
- ENVIRONMENT FRIENDLY
- EASY INSTALLATION AND DISMANTLING
- MODULAR OUTLOOK

OFFICE CONTAINERS

Puf model container

MS model container

Interiors with ACP/PVC/MDF

With or without furniture

With or without partitions

With or without a false ceiling

Customizable sizes and interiors

Site office/ portable

Customizable floors



POCO
SHOT ON POCO M2



Samsung Triple Camera
Shot with my Galaxy A50



Samsung Triple Camera
Shot with my Galaxy A50



POCO
SHOT ON POCO M2





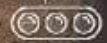
● ● ○ ○

REDMI NOTE 10S | THIRU

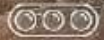
10/10/2021 14:41







Samsung Triple Camera
Shot with my Galaxy A50



Samsung Triple Camera
Shot with my Galaxy A50



Samsung Triple Camera
Shot with my Galaxy A50







POCO
SHOT ON POCO M2



POCO

SHOT ON POCO M2





Samsung Triple Camera
Shot with my Galaxy A50





PORTABLE TOILETS

PUF MODEL

Ppgi model

Single / Row type

Block type

lwc/ewc/urinals

With/without bath and washbasin

With and without tank stand and tank















SECURITY CABINS

Puf model

Pvc model

Ms model

Acp model

Economic and premium variants

Multiple sizes and dimensions

Customizable interiors

With/without watch tower

With/without grills































KIOSK/PORTABLE SHOPS

Puf model

Ppgi model

Ms model

Acp model

Pvc model

With or without interiors

Portable or site work

Doors/shutters

Customizable interiors/sizes









SITE OFFICE AND LABOUR CAMP

Customizable designs

Customizable interiors

Wide range of dimensions

Easy erection and dismantling

Fast and low cost construction





Samsung Triple Camera
Shot with my Galaxy A50



















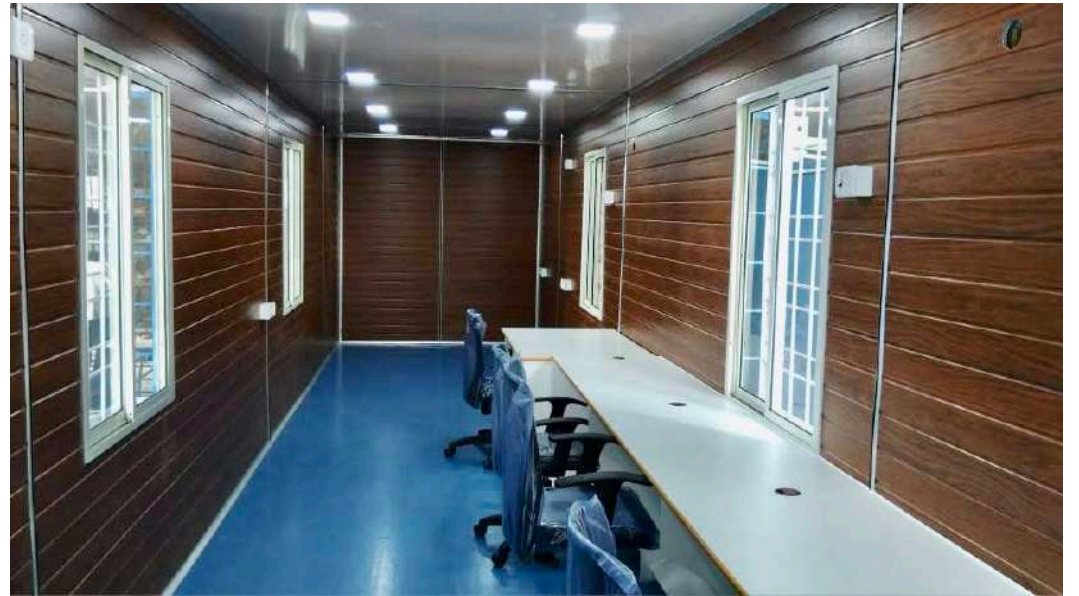




POCO
SHOT ON POCO M2



POCO
SHOT ON POCO M2



FARMHOUSE /CONTAINER HOMES

Puf model

Ms model

Container model

Aerocon model

Customizable interiors

Customizable designs and floors

Various dimensions

Modern outlook



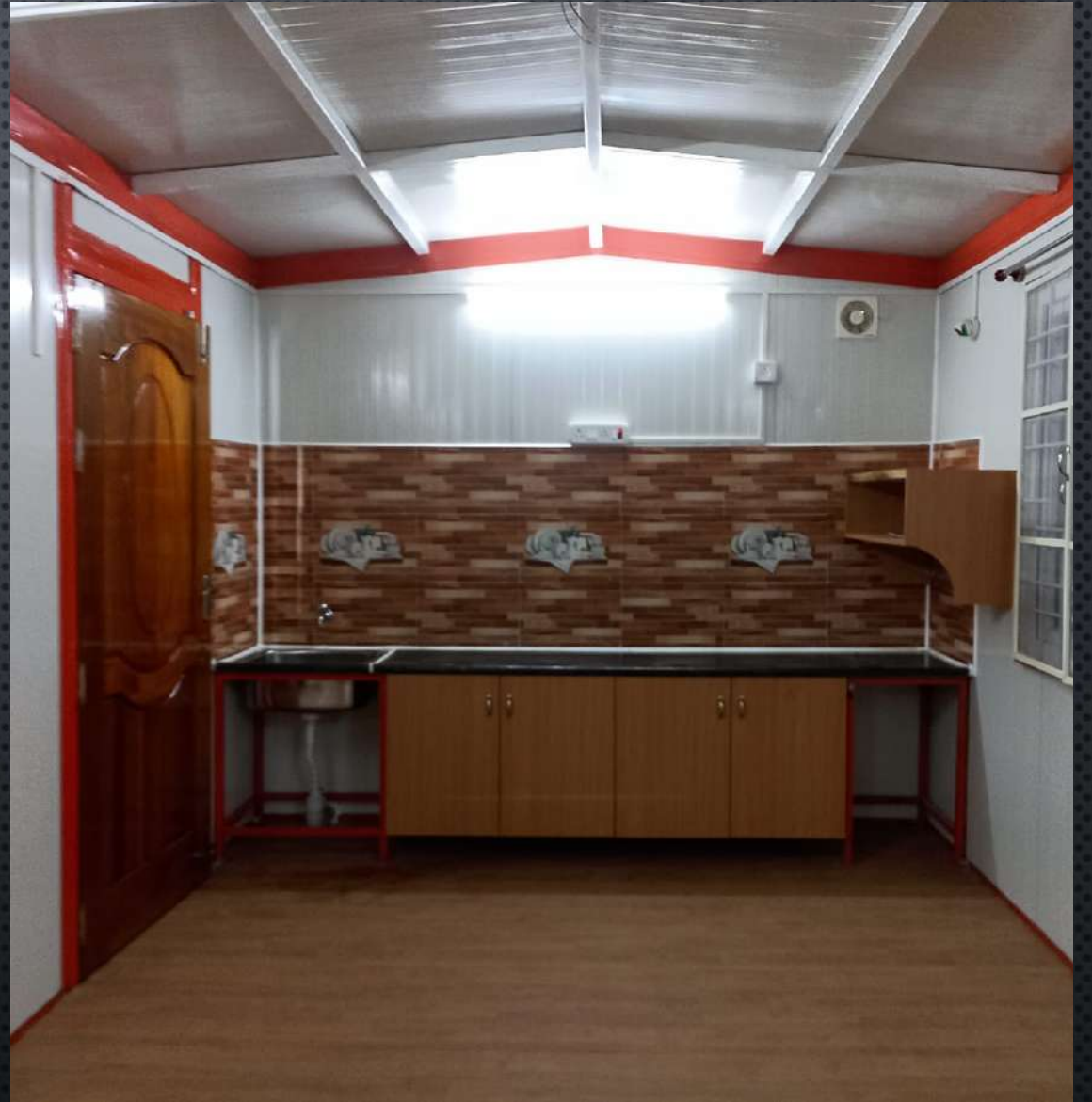
Shot on OnePlus
By Ak

Sevilimedu - Call Us : 82 70 24 24 24



3

Shot on OnePlus
By Ak













Shot on OnePlus
By Ak



Shot on OnePlus
By Ak











UPVC DOORS/WINDOWS

BENEFITS OF UPVC WINDOWS AND DOORS

- **ENERGY EFFICIENT:** UPVC WINDOWS AND DOORS ARE EXCELLENT INSULATORS, HELPING TO REDUCE HEAT LOSS AND SAVE ON ENERGY BILLS.
- **LOW MAINTENANCE:** UNLIKE WOODEN FRAMES, UPVC WINDOWS AND DOORS DO NOT REQUIRE REGULAR PAINTING OR SEALING, MAKING THEM LOW MAINTENANCE AND COST-EFFECTIVE.
- **DURABLE:** UPVC FRAMES ARE HIGHLY DURABLE AND RESISTANT TO WEATHERING, ROT, AND CORROSION, MAKING THEM AN EXCELLENT LONG-TERM INVESTMENT.
- **SECURE:** UPVC FRAMES ARE HIGHLY SECURE AND CAN BE FITTED WITH ADVANCED LOCKING SYSTEMS FOR ADDED PROTECTION AGAINST INTRUDERS.
- **VERSATILE:** UPVC FRAMES ARE AVAILABLE IN A RANGE OF STYLES, SIZES, AND COLORS, MAKING THEM HIGHLY VERSATILE AND SUITABLE FOR A WIDE RANGE OF ARCHITECTURAL STYLES AND DESIGN PREFERENCES.

PROFILE TYPES	COLOURS	MESH VARIANTS	GLASS VARIANTS
Eureka-Indian	White	Fibre mesh	Clear/Frosted/Double glazing
Eroline (Sarvesh)- Indian	Dark/Golden Oak	Aluminium Mesh	One-Way Blue/Brown
Innovative-Imported	Brown Timber	SS Mesh (White)	Toughened
LessoIti-Imported	Slate Grey	SS Mesh (Black)	Pin-Hut

PRODUCTS

- **Sliding windows with/without mesh**
- **Top hung openable windows**
- **Fixed/Openable windows**
- **Combination windows**
- **Sliding door with/without mesh**
- **Openable doors**
- **Ventilators with fans/adjustable louvers/fixed louvers**

SLIDING WINDOWS



FIXED WINDOWS



OPENABLE WINDOWS



COMBINATION WINDOWS



DOORS (OPENABLE AND SLIDING)



VENTILATORS



MESH VARIANTS



COLOUR VARIANTS



TRADING

TRADING DIVISIONS	PRODUCTS
Lubricant Solutions	Industrial Lubricants from CASTROL (Conventional and Speciality)
Industrial Solutions	Chemical/Acid/Fuel Storage tanks /Processing tanks/Conical Bottom Tanks/FRP tanks/SMC Panel Tanks
Environmental solutions	Sewage Treatment Plants(STP)/Septic tanks/Sump tanks/Water treatment plants/Underground FRP Septic tanks Waste bins with colour coding(collection to disposal) Plumbing solutions from APL APOLLO
Infrastructure Panels	PVC wall panels/PUF Sandwich panels(walls and roofs)/PPGI Sheets
Water Storage Solutions USED SHIPPING/CARGO CONTAINERS	Over head/Underground/FRP water tank(SINTEX AND APOLLO)

LUBRICANT SOLUTIONS

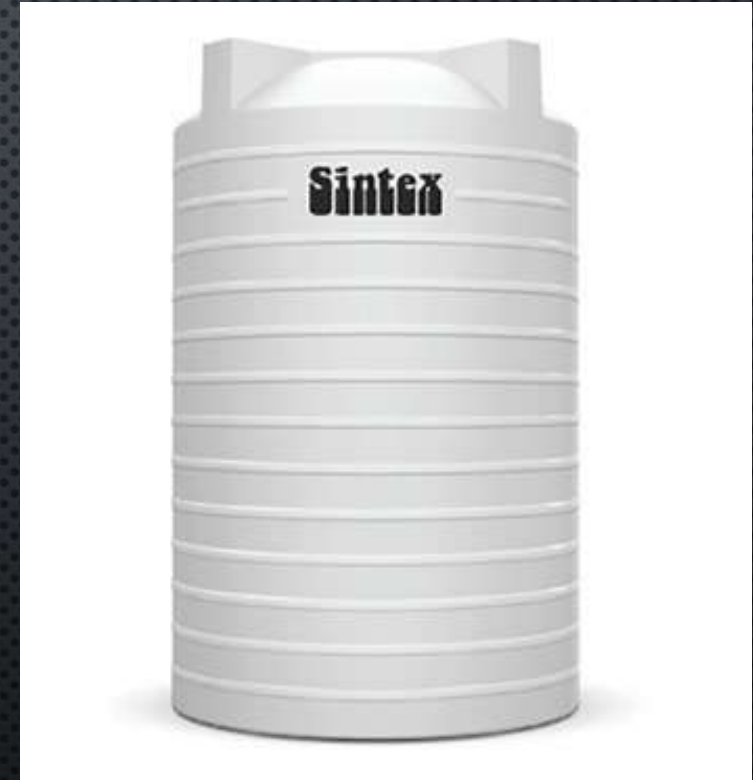


INDUSTRIAL LUBRICANTS FROM CASTROL (CONVENTIONAL AND SPECIALITY)

- CHAIN OILS/SPRAYS
- ELECTRICAL GREASE/WATER RESISTANCE GREASE/HIGH-TEMPERATURE GREASE/HEAVY LOAD BEARING GREASE/HIGH-SPEED GREASES
- HIGH-PERFORMANCE ENGINE OILS/GEAR OILS/HYDRAULIC FLUIDS/GREASE
- RUST PREVENTIVES/METAL WORKING FLUIDS/GUIDEWAY LUBRICANTS/SPINDLE OILS

INDUSTRIAL SOLUTIONS

SINTEX
Chemical/Acid/
Fuel
storage tanks



INDUSTRIAL TANKS FROM SINTEX

- CHEMICAL STORAGE TANK
- ACID STORAGE TANKS
- FUEL AND OIL STORAGE TANKS
- PROCESSING TANKS
- CONICAL BOTTOM TANKS
- FRP TANKS
- SMC/GRP PANEL TANKS

SINTEX WATER STORAGE/ENVIRONMENTAL SOLUTIONS



FRP WATER TANK



3 LAYER SINTEX



FRP SEWAGE TREATMENT TANK



UNDERGROUND TANK



**2 LAYER CLASSIC
BLACK**



**TITUS MULTILAYER
TANK COLOURS**



SEPTIC TANK

RANGE OF PRODUCTS

- SEWAGE TREATMENT PLANTS(STP)
- SEPTIC TANKS
- SUMP TANKS
- WATER TREATMENT PLANTS
- UNDERGROUND FRP SEPTIC TANKS
- WASTE BINS WITH COLOUR CODING(COLLECTION TO DISPOSAL)
- OVERHEAD TANKS
- UNDERGROUND TANK
- FRP WATER TANK
- LOFT TANKS
- 2 LAYERED/3 LAYERED/ COLOUR TANKS

APL APOLLO WATER STORAGE AND PLUMBING SOLUTIONS



3 LAYER WATER TANK



4 LAYER WATER TANK



5 LAYER WATER TANK



WATER TANK COLOURS



PVC PIPES AND FITTINGS



UPVC PIPES AND FITTINGS



CPVC PIPES AND FITTINGS



PPRC PIPES AND FITTINGS

RANGE OF PRODUCTS

- 3/4/5 LAYERED WATER TANKS FROM 500 LTRS TO 5000 LTRS
- PVC PIPES AND FITTINGS
- UPVC PIPES AND FITTINGS
- CPVC PIPES AND FITTINGS
- PPRC PIPES AND FITTINGS
- SANITARY FITTINGS

INFRASTRUCTURE PANELS



PVC PANELS



PUF PANELS



PPGI PANELS

INFRASTRUCTURE PANELS

PUF ROOF PANELS – IN ALL
THICKNESSES AND SIZES

PUF WALL PANELS – IN ALL
THICKNESSES AND SIZES

PVC PANELS – WIDE RANGE OF
COLOURS AND THICKNESSES

PPGI SHEETS – WIDE RANGE OF
COLOURS/THICKNESSES/PLAIN/RIBBED

USED SHIPPING/CARGO CONTAINERS



ESTEEMED PROJECTS



MR. ASHOK KUMAR.R.G.S (CHENNAI)
(SALES MANAGER)

ASHOK@ALPHACHEN.COM (+919094048568)

MR. RAJASHEKAR.S (BANGALORE)
(SALES MANAGER)

ALPHAPREFAB@GMAIL.COM (+918095667226)

MR. SATHIS KUMAR.M
(GENERAL MANAGER)

SATHIS@ALPHACHEN.COM (+919094048551)

MR. VASUDEVAN.K
(MANAGING DIRECTOR)

VASUHSR@ALPHACHEN.COM (+919362847187)

LOCATIONS: CHENNAI, BANGALORE, MYSORE

MANUFACTURING UNIT:
CHENNAI | BANGALORE

WWW.ALPHACHEN.COM

SALES@ALPHACHEN.COM



Location:

<https://goo.Gl/maps/1pytxftbfoa18cax9>