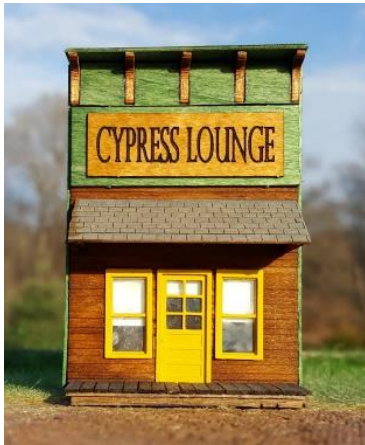


Conowingo Models



CYPRESS LOUNGE



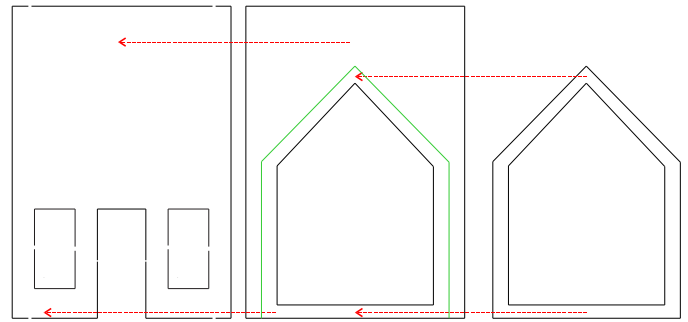
www.conowingomodels.com
<https://www.facebook.com/ConowingoModels/>
railrunner130@hotmail.com

Thank you for purchasing this kit!

This building was designed to be a general-purpose, false-front storefront. It would go well in a mining town or just about anywhere a historical building would fit. See conowingomodels.com for more info and tips on the instructions below.

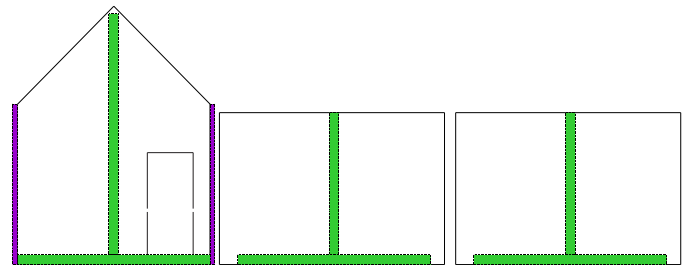
BUILDING

1. Start by building the front of the structure. You can use a craft glue or CA for this and the rest of the kit.
 - A. Ensure the left two pieces shown below have the clapboard side facing out, so the flat sides face each other.
 - B. The basswood brace fits directly to the backside of the false front. You are gluing the flat piece to the clapboard. It sounds counterintuitive, but it's ok.
 - C. You should use clamps to ensure a good fit while the glue dries.



2. Bracing –

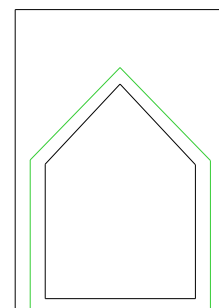
- A. Use the 3/32 bracing (green) to brace the walls. Due to the direction of the clapboard, vertical is more important than horizontal, so do that first. Be sure to use the clapboard proper side up!
- B. Use the excess for horizontal bracing along the bottom to help with attaching to the base. You may also choose to add vertical bracing to the sides of the front door. (Not shown)
- C. Use the 1/16 bracing (purple) to build the corners. This step can be omitted until later if you're looking to paint the corners a different color than the building.



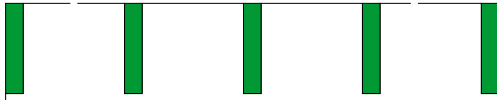
3. Paint – All parts as required. Most of the prototype is stained using Hunterline stains.

4. Assembly-

Attach the side walls to the brace on the back of the false front.



5. Attach the rear wall to the side walls with the corner bracing touching the side walls. Clamp together as desired. A rubber band may work well.
6. Shingle roof pieces except roof caps
7. Attach the two front overhang support pieces to the overhang. As with before, be sure to use the clapboard proper side up!
8. Apply roofs and roof cap
9. Decorative pieces-
 - A. Attach the two end shelf bracing pieces to the front side of the false front. (Shown below in green)
 - B. Install the plywood support piece that goes under/around the braces. (shown in white) This will ensure proper alignment.
 - C. Install the remaining three shelf braces.



10. Apply stripwood to the sides of the false front and top.
11. Apply door, windows, trim and chimney as desired.
12. Cut and install stripwood for the front walkway and back step. You may want to put a final wash of stain over the top to cover up any unstained wood.
13. Please share your photos on our Facebook page!
<https://www.facebook.com/ConowingoModels>

Once again, thank you for your purchase!

If there are any parts missing, please e-mail me what you need to complete the kit and I'll send it your way. Also suggestions for improvement are welcome. Send photos!

See the Conowingo Models website
www.conowingomodels.com
 Or our Facebook page
<https://www.facebook.com/ConowingoModels/>
 for more exciting, funky buildings and rolling stock for your model railroad!

Many thanks to Jeff Grove, Steve Milley and Mark Schreier for their support!

