

# Conowingo Models



## FALLEN ANGEL TAVERN



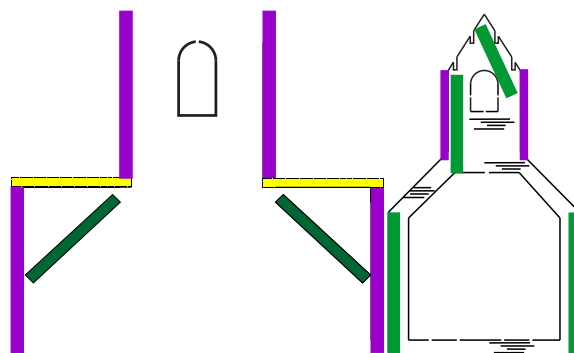
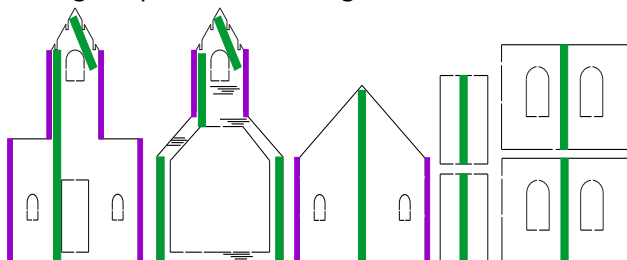
[www.conowingomodels.com](http://www.conowingomodels.com)  
<https://www.facebook.com/ConowingoModels/>  
 railrunner130@hotmail.com

Thank you for purchasing this kit!

This building was designed to be a church that ran on hard times and was repurposed into a bar. However, it can be used for any number of things (perhaps back into a church?). See [conowingomodels.com](http://conowingomodels.com) for more info and tips on the instructions below.

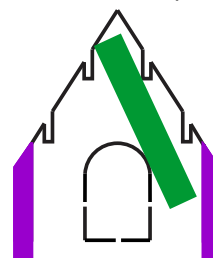
### BUILDING

1. Bracing (shown in green) / Stripwood (Purple) / 132 stripwood (yellow) 132 covers the top of the false front. Mark the roof line on the inside of the front piece by laying the middle piece directly on top of the front piece and tracing the roof line. I recommend adding a piece of bracing under this as well.

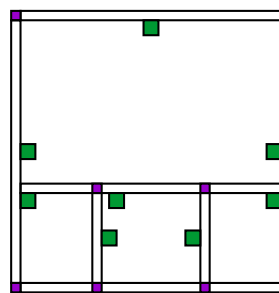


Ensure you put the bracing for the middle piece on the **clipboard side**. Otherwise two windows will be partially blocked.

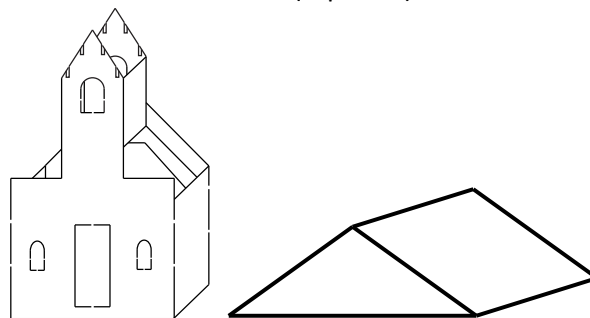
2. Paint – All parts as required
3. Trim the stripwood to line up with the roof of the belltower. (front and middle pieces)



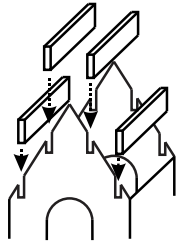
4. Assembly



(top view)

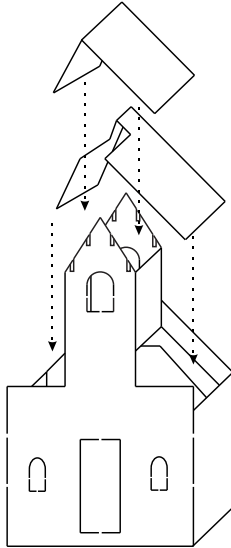


5. Cut and install stripwood pieces to fit on bell tower. Rubber bands work well to hold the building together.

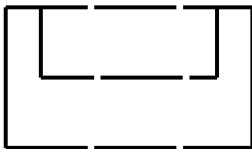


6. Shingle roof pieces except roof caps

7. Apply roofs and roof cap



8. Assemble door step. You may need to trim the step to fit under the door



9. Trim and install the triangular pieces behind the false front. Ensure they fit flat and square.

10. Apply door, windows, trim and chimney as desired. The pilot model has trim under the aft roof and on top of the false front. A slight overhang gives it a distinct look.

11. Apply posters and sign as desired

12. Please share your photos on our Facebook page!  
<https://www.facebook.com/ConowingoModels>

If there are any parts missing, please e-mail me what you need to complete the kit and I'll send it your way. Also suggestions for improvement are welcome.

See the Conowingo Models website  
[www.conowingomodels.com](http://www.conowingomodels.com)  
 for more exciting, funky buildings for your model railroad!

Many thanks to Jeff Grove, Steve Milley and Mark Schreier for their support!



Once again, thank you for your purchase!