



Grey Street House Company House Version

HO-scale



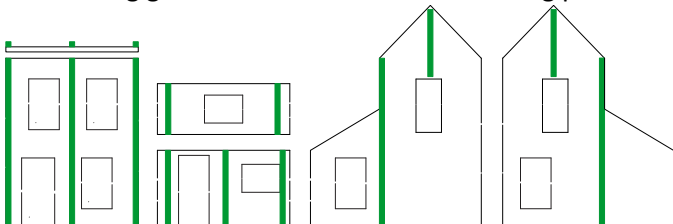
www.conowingomodels.com
<https://www.facebook.com/ConowingoModels/>
conowingomodels@yahoo.com
 September, 2023 Revision

This kit was redesigned to be a company house. The design itself is fairly generic and was probably a catalog house. Make this kit something special.

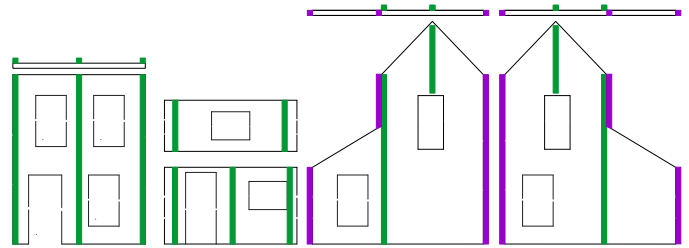
Supplied are the basic directions. For more tips and some additional instructions, please see conowingomodels.com

BUILDING

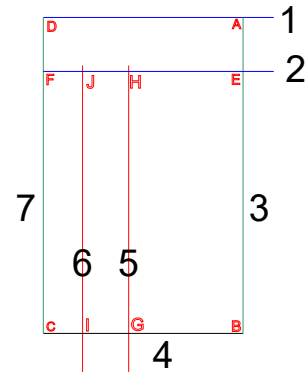
1. Bracing (shown in green) Cross sections shown on top using the 1/8 stripwood. Ensure the vertical bracing goes to the bottom of the building pieces.



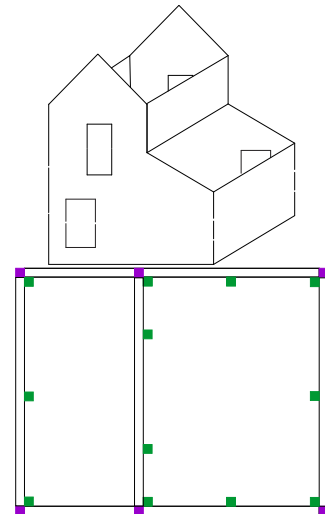
2. Cut and glue the 1/16 corner pieces (shown in purple) Cross sections on top



3. Trim the stripwood to line up with the roof
4. The base goes together in a tongue-and-groove style. Each piece is labeled, along with the intersections. Ex. Piece 1 connects to piece 3 where the As match up. I've found it's easiest to glue 1,3,4 and 7 first. Then 2,5 and 6.



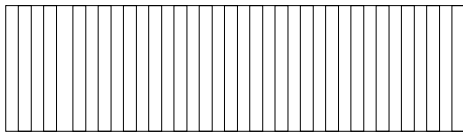
5. Paint/stain – All parts as required. Do not paint/stain the base unless you brace it first.
6. Assemble the building. Bottom diagram is the top view



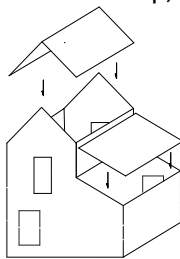
7. Glue the scribed siding pieces to the front and sides of the porch. We've included pieces for the steps as well, should you decide to use them. If you decide not to use them, you might want to trim the siding from the steps on the front porch.
8. Fit, cut and attach the brick paper to the sides of the foundation on the rear and under the back step. Be

careful, there is an up orientation to the bricks. It has a slight shadow. I recommend adding a good bit of glue and clamping a flat piece of wood to each side to prevent warping.

9. Add window dressings as desired. You may choose to add curtains of different colors, blinds, etc. Different heights and off-level blinds show signs of life.
10. Prepare the tarpaper roofing. I recommend using the tutorial by Jason Jensen Trains on Youtube. Look for episode 010. It explains the process better than we can. The tarpaper should be cut to $\frac{3}{8}$ inch or $2\frac{3}{4}$ scale feet.
11. Measure, cut and glue in place the $\frac{1}{32} \times \frac{3}{32}$ stripwood for use on the porch and steps. The deck boards on the porch go away from the building. Be sure to leave a little spacing between the boards as the wood expands and contracts. The boards should overlap the right and front sides by $\frac{1}{4}$ scale foot or as you desire.

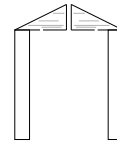


12. Glue in place door, windows and shutters as desired
13. Tarpaper all three roof pieces except for the roof cap
14. Apply roof pieces and roof cap, except for porch roof

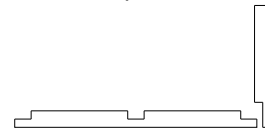


15. Glue the building to the top of the foundation. Overlap should be even on the left, right and rear sides.
16. Porch bolsters- Measure the height, keeping in mind the height of the windows on the second floor and the triangular porch roof support. Ours are $7\frac{1}{2}$ scale feet tall, but that's probably a hair too tall. Cut a $\frac{1}{8}$ piece of stripwood in three equal pieces to the desired height.
17. Glue the triangular porch roof supports to the $\frac{1}{8}$ pieces. Lay them flat and square, with the siding side

down. This will create a very small notch on the top, opposite side of the bolster.



18. Glue the two bolsters in place. They should be over the left and right front corners of the porch. Be sure that the deck boards stick out on the bottom and that the siding sides are outboard.
19. Cut and glue a piece of the wide stripwood to fit between the two notches mentioned in step 17.
20. Glue the third bolster, centered, in place under the stripwood piece mentioned in step 19.
21. Using a piece of $\frac{1}{32} \times \frac{3}{32}$ stripwood, cut, fit and glue the top of the railing around the front porch bolsters as shown below. We recommend only cutting the depth half way. They should be about $3\frac{1}{2}$ scale feet up from the porch deck.



22. Use $\frac{1}{32} \times \frac{3}{32}$ stripwood to add the porch rail bracing under the railings as below. We left ours a little short so the wood looks rotted.



23. Glue the porch roof into place
24. Add the trim under the soffits.
25. Please share your completed photos on <https://www.facebook.com/ConowingoModels/>

If there are any parts missing, please e-mail me what you need to complete the kit and I'll send it your way. Suggestions for improvement are welcome.

See the Conowingo Models website www.conowingomodels.com for more exciting, funky buildings for your model railroad!
Many thanks to Jeff Grove, Steve Milley and Mark Schreier for their support!