

Conowingo Models



Whispering Chapel



www.conowingomodels.com
[https://www.facebook.com/ConowingoModels/
railrunner130@hotmail.com](https://www.facebook.com/ConowingoModels/railrunner130@hotmail.com)



Thank you for purchasing this kit!

The church is based on a photo I found online. Detective work eventually revealed that the building is called Maroltova Kapelica (Marolt's Chapel in english) and it is located in Smartno, Pohorje Hills, Slovenia. According to Google, the coordinates are 46.447686, 15.531212, in the event you want to make your chapel more prototypical. It should be right at home in a suburban setting, a seaside town or a place of reflection in the woods. The choice is yours.

Supplied are the basic directions. For more tips and some additional instructions, please see conowingomodels.com

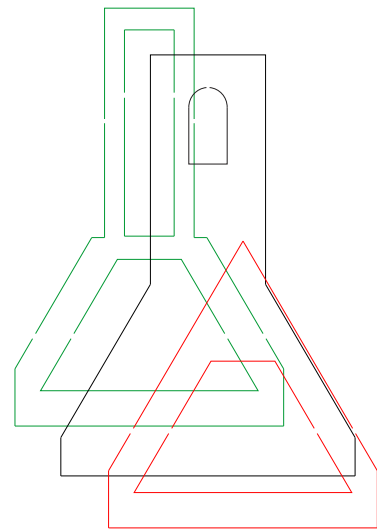
This kit uses task board, which warps easy. If you've never used it, task board is like thin cotton stuck to chipboard. Avoid cutting it because it'll get very fibrous. Additionally, if you cut it, ensure you have a brand-new, knife blade. Anything the slightest bit dull will tear the task board.

BUILDING

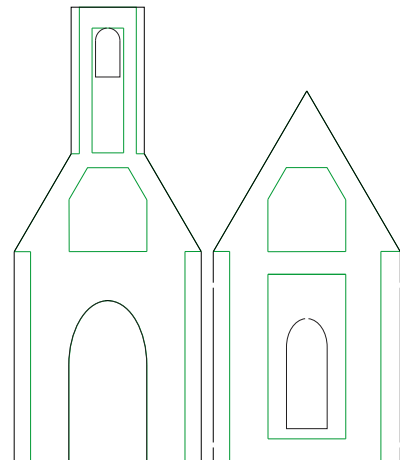
1. Bracing – This kit uses custom laser-cut basswood bracing. See below for assembly. Let it dry as long as you can (overnight/ 24 hours) before proceeding with step 4. You will notice that the taskboard has a smooth side and a rough side. Glue bracing to the smooth side.

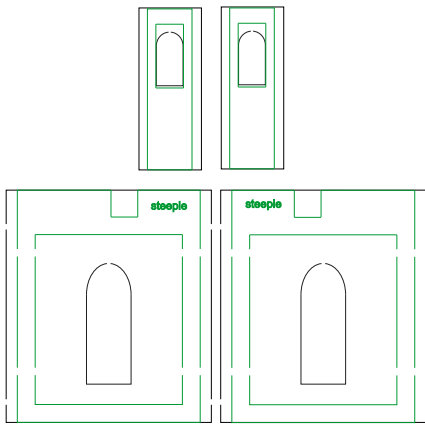
- 1A. Basswood Bracing is outlined in green
- 1B. Task board is outlined in black
- 1C. Basswood roof support is outlined in red

All bracing should be centered right/left and not block any windows. There should be no play top/bottom.



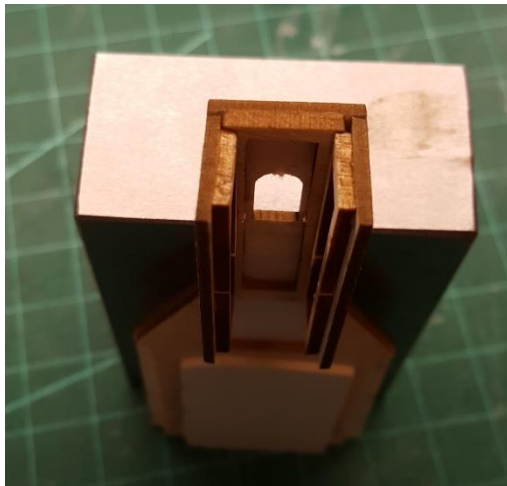
Ensure the outside of the task board is facing the roof support.



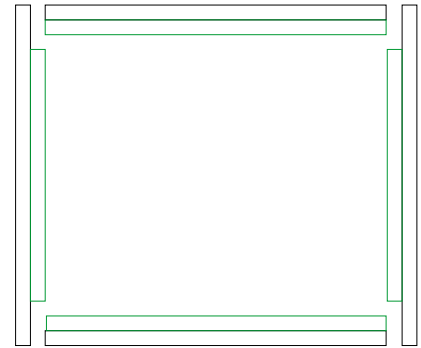


The bracing for the side walls can go on either side. However, it will matter later.

2. Paint – While you’re waiting for the bracing to dry, I’d recommend painting the windows and roof trim. I stained the door and door trim with Hunterline Cedar. Glaze when dry.
3. Cut and glue the stone paper to the outside of the foundation. It’s been my experience that using a quick-setting CA and applying pressure as you go works well. You may choose to paint the entranceway concrete and chapel floor when this is dry.
4. Assemble the steeple as shown below from a top. Structure in photo is supported by a 3-2-1 block. Ensure you’re using the inner steeple support (top figure in step 1), not the outer wall as is shown later in step 1. Yes, the photo is wrong. Try to keep it as square as you can. It will work to use the outer wall, but it will take longer and isn’t as neat. Trust me, I know....

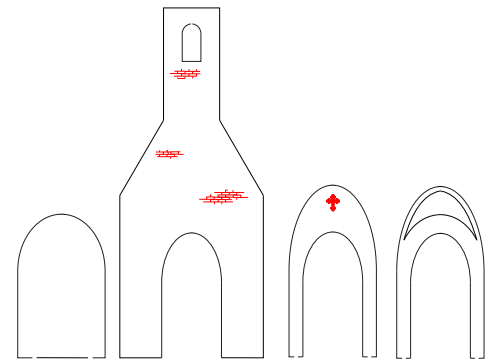


5. Once the bracing from step 1 has dried, see below for a top view of how to put the building together. Front and rear are on the left and right sides. Assemble so that the bracing with the word “steeple” is towards the front.



Shown positioned, but not assembled for clarity
 Black – task board
 Green – basswood bracing

6. Decide whether or not you want to use the archway piece with or without the cross. Whichever one you don’t use will be scrap.
 - 6A. Assemble the three archway pieces as shown below, from right to left, ensuring proper alignment for a smooth entranceway.
 - 6B. Before adding the inner wall, sand the three assembled archway pieces to a desired smoothness.



7. Begin assembling the steeple roof support by gluing the two wood braces in a cross pattern utilizing the long notches.
8. Take the chip board roofing for the steeple and bend the pieces so that they conform to the photo below.



9. Using a fast-drying CA, glue the steeple roof support to the chip board, ensuring it is well centered.
 - 9A. Glue the needle in place on top of the roof support.
 - 9B. Glue the corners together or possibly use a narrow, thin tape to ensure the steeple is plumb and the edges come together.
10. Read through this step before proceeding to trim out the steeple.
 - 10A. Glue the piece of 1/16 basswood steeple roof trim piece (square piece) under the center of the steeple roof.
 - 10B. As an alternative, you can use the 1/32 plywood steeple roof trim piece (square piece) instead of the 1/16 basswood.
 - 10C. As a second alternative, the kit was designed with the intention of stacking the 1/32 plywood under the 1/16 basswood, which in turn, goes under the steeple.
11. Glue the steeple walls to the main building, ensuring all sides match and the lower support pieces line up in the side wall braces.
12. Once the building is dry, I'd recommend painting the exposed brick. Depending on the paint you use, you can fill in the mortar as well if you so choose. I also painted the cross at this step.
13. Fill in any gaps in the corners and cover the visible edges. I intentionally left long cracks and bricks so you can fill in what you want. To do this, I've tried drywall compound or patching plaster. I used my fingers to give it more of a stucco texture than a straight edge could offer.
14. Shingle the roof except for the roof cap.

15. Once the building is dry, paint it with an off-white, or color of your choosing.
16. Install the doors, door trim and windows.
17. Glue down the roof and roof cap.
18. Shingle the steeple roof. Take your time. It took me four sessions to do because I did it a little at a time and used CA to help with getting the shingles to stay in place. At the top, use some CA to further cement the needle into position. Use some masking tape to cap the roof.
19. Paint both pieces of roofing with grimy black or a color of your choosing. I used grimy black to simulate slate.
20. Install the roofing trim if you so desire.
21. Glue the chapel to the base, ensuring it is straight and even.

Please share your completed photos on <https://www.facebook.com/ConowingoModels/>

See Conowingomodels.com for more unique HO-scale structure kits.

If there are any parts missing, please e-mail me railrunner130@yahoo.com and I'll get those parts headed your way.

Many thanks to Steve Milley, Jeff Grove, Greg Cassidy and Mark Schreier for their help!