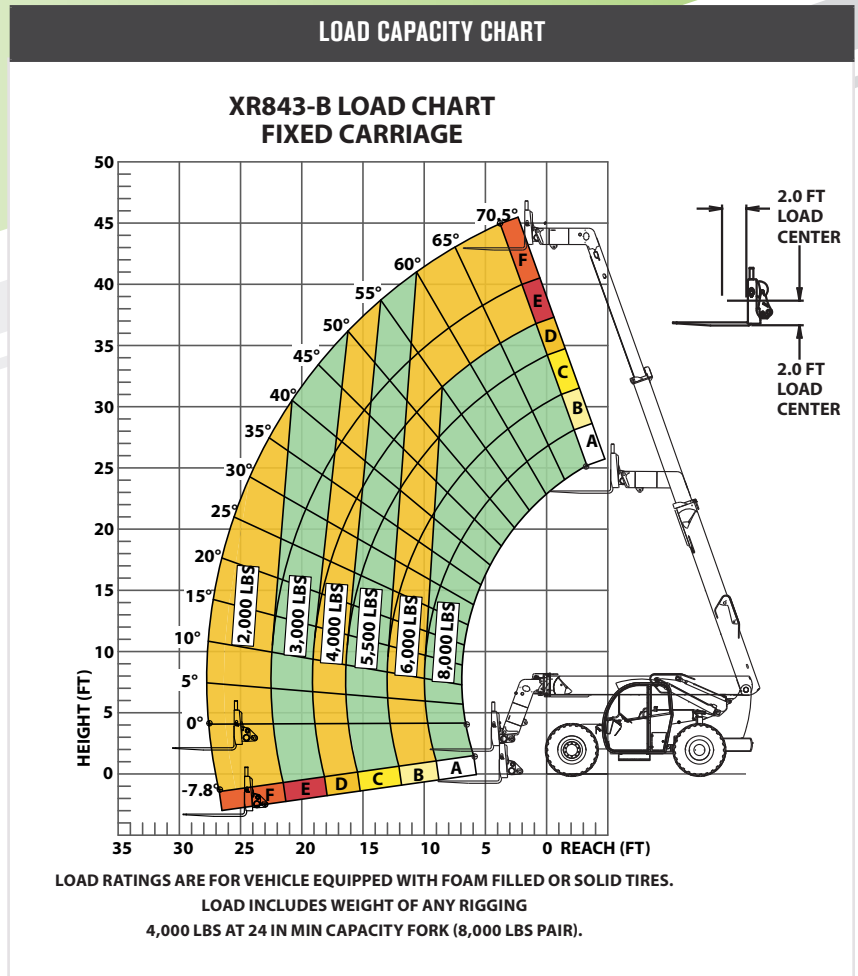


SPECIFICATIONS		
Lift capacity	8,000 lbs	3,628kg
Max lift height	43'	13.1m
Forward reach	26' 11"	8.2m
Frame leveling L/R	11°	
Weight*	27,000 lbs	12,245kg
Engine (Cummins 3.8L)	74 hp HT (Tier 4F)	
Axles	ZF MST3055 / 3055	
Transmission	ZF 3WG94	
Fuel capacity	50 gal	189L
Tires	foam filled 15.5 x 25	
Hydraulic flow (per min)	49 gal	185.4L
Hydraulic pressure	3,500 psi	241.3bar
Hydraulic oil capacity	62 gal	234.6L
Length to fork face	20' 10"	6.35m
Width	101"	2.56m
Height	8'	2.43m
Wheelbase	125"	3.18m
Ground clearance	16.5"	419mm
Turning radius	12'	3.65m

\*Preliminary weight based on open cab model with foam filled tires.



STANDARD FEATURES	
360° operator visibility	Ductile steel manifold
Suspension seat	Easy cab mounted grab handles
Easy service access	Master disconnect switch
Protected tilt & extend cylinders	Boom lift point
Steel hydraulic & fuel tanks	Manual lowering valve (cylinders)
Long life Lexan labels	Large cross section boom
Heavy duty boom chains	Easy tie downs
Suspended pedals	Heavy duty pre-cleaner
Large capacity fuel tank	Additional high pressure hydraulic filter
Trunnion mounted sway cylinders	Individual gauges/switches
Melonite pins	Steel hood
Standard auxiliary hydraulics	Solid steel plate chassis
Steel dash	Rear axle stabilization (RAS)
Center mounted powertrain	Back up alarm with light
Long life boom rollers	Dual batteries
Cab step	Limited slip front axle
Electrical aux hydraulic control	