

# 2024 Spring Fundraiser Order Form

**Order Deadline  
April 1st, 2024**

# Iron Baraga Conservation District

**Pick-Up Locations In Baraga, Amasa & Land O' Lakes**

**Order Online: IronBaragaCD.org - Order By Phone: (906) 875-3765**

**Payment Address: 2 South 6th Street, Suite 15 - Crystal Falls, Michigan 49920**

ITEM#	QTY	TOTAL	PREMIUM FRUIT TREES - 6 to 10 FOOT TALL - BRANCHED TREES - (S) Standard (SD) Semi-Dwarf		
PLEASE VISIT OUR WEBSITE AT: IRONBARAGACD.ORG TO SEE SPECIAL ITEMS THAT ARE ONLY AVAILABLE IN SMALL QUANTITIES					
103			Centennial Crabapple (S) 1957, very cold hardy, 2" Fruit, Dolgo X Wealthy cross, Zone-3	Crab	2 or More
104			Chestnut Crabapple (S) 1946, pollinator apple, white blooms, cold hardy, nutty taste, Zone-3		
108			Whitney Crabapple (S) 1865, Yellow/Red, hardy, heavy-bearing tree, short storage, Zone-3	\$50	\$45 Each
116			Cortland Apple (SD) 1898, Red/Green, juicy, firm & crispy, fresh eat, baking, cook, Zone-3	\$60 for Each Apple Tree  Pick 2 or More for \$55 Each	
129			Frostbite Apple (SD) 1921, Maroon, small-medium, sweet, firm, short storage, Zone-3		
136			Gravenstein Apple (SD) 1797, Green/Red Stripes, Denmark, very early, sweet, crisp, Zone-3		
139			Haralred Apple (SD) 1963, Red, medium to large, firm, tart, no pollinate by Haralson, Zone-3		
141			Haralson Apple (SD) 1922, Red/Green, cold hardy, stores up to 6 months, firm, tart, Zone-3		
145			Hazen Apple (S) 1966, Red, sweet, soft, juicy, fresh eating and apple butter, Zone-3		
147			Honeycrisp Apple (S) 1974, Yellow, sweet, fresh, great pollinator, short storage, Zone-4		
162			McIntosh Apple (S) 1811, Green & Red, vigorous, small-medium, tart, fresh, cook, Zone-4		
166			Norland Apple (S) 1979, Red/Green, very early, very cold hardy, very long keep, Zone-2		
172			Red Baron Apple (S) 1970, Yellow/Red, medium, bears early age, crisp, juicy, sweet, Zone-3		
174			Red Duchess Apple (S) 1835, Red/Yellow, eating, great baking, early, very cold hardy, Zone-3		
178			Red Regent Apple (SD) 1963, Red, medium to large, juicy, crisp, fresh eating, cooking, Zone-4		
183			SnowSweet Apple (SD) 2006, Red/Green, buttery flavor, sweet & tart, long storage, Zone-4/3		
185			State Fair Apple (SD) 1978, Striped Red, juicy, cold hardy, multi use, short store, Zone-3/4		
187			Sweet 16 Apple (SD) 1973, Best fresh, vanilla, cherry, bourbon & molasses flavor, Zone-3		
195			Wealthy Apple (SD) 1868, Green/Red, sweet, good for dessert or cider, very juicy, Zone-4		
199			Wolf River Apple (S) 1875, Red/Yellow/Green, very large size, baking, 5 inch apples, Zone-4		
201			Wodarz Apple (S) 1878, Yellow/Green/Pink, extreme hardy, eat, store 3 months, Zone-3		
204			Yellow Trans. Apple (S) 1870, Yellow, Russian, productive, old time fav., very sweet, Zone-3		
205			Zestar Apple (S) 1999, Red/Green, ripens early, crisp, long storage, cold hardy, Zone-3		
249			Black Ice Plum (S) 2004, Black/Purple, cross between cherry plum and Japanese, Zone-4/3	Plum	Pick 2 or More
261			Mount Royal Plum (S) 1903, Purple/Blue, European, fresh, dessert, jam, preserves, Zone-4		
266			Pipestone Plum (S) 1942, Red, sweet, juicy, yellow flesh, large fruit, fresh, jam, Zone-3		
271			Superior Plum (S) 1933, Red, best with Toka, productive, sweet, juicy, hardy, Zone-4/3		
273			Toka Plum (SD) 1911, Self-fertile, AKA Bubblegum, juicy plums, sweet & hardy, Zone-3	\$60	\$55 Each
325			Evans Bali Cherry (S) 1923, Self-fertile, Dark Red, eat-bake, very sweet tart cherry, Zone-3	Cherry	Pick 2 or More
332			Masabi Cherry (S) 1964, Self-fertile, Red, sweet/tart, 12 feet tall max, small yard, Zone-4		
334			Meteor Cherry (S) 1952, Self-fertile, Red, dwarf tree, small yards, pies, eat, Zone-4		
336			Montmorency Cherry (S) 1600's, Self-fertile, Red, firm, juicy, vigorous, productive, Zone-5		
322			Sweet Cherry Pie 1971, Self-fertile, Red, very sweet pie cherry, jam, jelly, pie, Zone-4	\$70	\$65
217			Early Gold Pear (S) 1949, Yellow, best with Ure, very early fruit, very hardy, Zone-3/2	Pear	Pick 2 or More
219			Golden Spice Pear (S) 1949, Yellow/Blush Red, best with Ure, canning & spicing, Zone-3		
222			Luscious Pear (SD) 1954, Yel., best w/ Parker, heavy bearer, sterile, dessert, Zone-4		
226			Parker Pear (SD) 1934, Bronze, best w/ Ure-Patten-Summercrisp, large, juicy, Zone-4/3		
228			Patten Pear (SD) 1964, Best w/ Ure-Golden Spice-Summercrisp, good pollinator, Zone-4		
233			Summercrisp Pear (SD) 1985, Green/Blush, best w/ Parker/Patten, hardy, stores well, Zone 3		
237			Ure Pear (S) 1978, Best w/Golden Spice-Patten-Parker, hardy, fresh, can, Zone-3/2	\$70	\$65
1030			10 Premium Fruit Tree Bundle, Our Pick Mixture of Our Premium Fruit Trees, We Pick	Each	Each
					\$425

ITEM#	QTY	TOTAL	FOOD BEARING PLANTS AND BUSHES	
404			Blueberry-Bluecrop (Zone 4)	Sweet, early, great for U-pick, mechanical harvest, commercial
408			Blueberry-Bluetta (Zone 4)	Early season, large, light blue, firm, mild, sweet, commercial
417			Blueberry-Duke (Zone 4)	Early, large, firm berry, vigorous plant, plant grows upright
419			Blueberry-Earliblue (Zone 4)	Very early season, produces more plant with Jersey/Bluecrop
428			Blueberry-Jersey (Zone 4)	Late-mid-season, oldest & dependable, very sweet & midsized
441			Blue.-Pink Lemonade (Zone 4)	Pink berries, late, sweet lemony flavor, compact bush, unique
446			Blueberry-Rancocas (Zone 4)	Real strong blueberry flavor, excellent for pie & muffins, early
1032			10 Plant Blueberry Bundle Our Pick	Mixture of our Blueberries, We Pick
463			Strawberry-All Star (Zone 4)	JUNE- Very large fruit, midseason, firm berry, good flavor
477			Strawberry-Honeoye (Zone 3)	JUNE- Early, very large berry, good flavor, tasty, classic
484			Straw.-Ozark Beauty (Zone 4)	EVER- High yields, sweet, ideal for desserts, jam and jelly
489			Strawberry-Seascape (Zone 4)	DAY NEUTRAL- Heavy producer, large & firm, great flavor, pies
491			Strawberry-Sparkle (Zone 3)	JUNE- Midseason, medium size berry, dark red, excellent flavor
499			Pineberry-W. Carolina (Zone 4)	EVER- Unique, hybrid, pineapple flavor, plant with EVERBEAR
1035			100 Plant Strawberry Bundle Our Pick	Mixture of our Strawberries, We Pick
575			Grape-Catawba (Zone 4)	Red, large clusters of good quality, spicy flavored grapes
576			Grape-Concord (Zone 4)	Blue, sweet, makes best jellies, juice & sweet wine, classic
577			Grape-Fredonia (Zone 4)	Cold hardy blue, ripens early, very vigorous and productive
579			Grape-Niagara (Zone 4)	White, very cold hardy, best sweet quality, vigorous vines
1036			5 Plant Table Grape Bundle Our Pick	Mixture of our Table Grapes, We Pick
601			Goji Berry (Zone 3)	Highly disease resistant and drought tolerant
607			Elderberry-Adams (Zone 3)	Bountiful purple berries summer, jelly & wine, needs pollinator
608			Elderberry-Johns (Zone 3)	Early, large clusters, great for jelly, needs pollinator
609			Elderberry-York (Zone 3)	Large, sweet black fruit, teas, syrups, jellies, needs pollinator
1037			5 Plant Elderberry Bundle Our Pick	Mixture of our Elderberries, We Pick
531			Blackberry-Darrow (Zone 3)	Very hardy, productive, tasty, upright, strong canes
536			Rasp.-Fall Gold Yel. (Zone 4)	EVERBEARING - Sweet flavor, grows vigorously, suckers freely
544			R.-Royalty (Red-Purple) (Zone 4)	SUMMER BEARING - Cross Red & Purple, sweet, productive
556			Rasp.-Bristol (Black) (Zone 3)	MIDSEASON - Sweet, firm, large, glossy fruit, vigorous
561			Rasp.-Killarney (Red) (Zone 3)	SUMMER BEARING - Cold hardy, reliable, sweet, from Manitoba
562			Raspberry-Boyne (Red) (Zone 3)	SUMMER BEARING - Hardy, heavy producer, ripens earliest
567			Raspberry-Latham (Zone 3)	JUNE BEARING - Ripens early June, sweet fruit, pure red, firm
564			Raspberry-Souris (Red) (Zone 3)	SUMMER BEARING - Improved Boyne, upright, productive, sweet
565			Rasp.-Heritage (Red) (Zone 4)	EVERBEARING - Excellent fruit, good flavor, high yields
1042			10 Plant Raspberry Bundle Our Pick	Mixture of our Raspberries, We Pick
621			Rhubarb-Canada Red (Zone 3)	Tender, sweet, red, winter hardy, moist well-drained soil
622			Rhubarb-Crimson Red (Zone 3)	Sweet yet tart, red, winter hardy, very disease resistant
623			Rhubarb-Victoria Root (Zone 2)	Heirloom, can harvest after first year, slender, red/green
1039			5 Plant Rhubarb Bundle Our Pick	Mixture of our Rhubarb, We Pick
510			A.-Mary Washington (Zone 4)	HEIRLOOM- Best all around variety for garden & commercial
504			Aspar.-Jersey Knight (Zone 3)	HYBRID- Succulent spears, large, vigorous, clay soil friendly
511			Asparagus-Millennium (Zone 3)	HYBRID- Flavorful, grow in range of soils & clay, good to freeze
516			Asparagus-Viking KB3 (Zone 4)	HEIRLOOM- Hardy, rust resistant, good yields, open pollinated
1031			50 Plant Asparagus Bundle Our Pick	Mixture of our Asparagus, We Pick
610			Horseradish-Czech (Zone 3)	White, pungent, hardy, rich soil & moisture, needs space
619			Seed Potatoes-Kennebec 2#	Good keeper, all purpose use, high yields, disease resistance
614			Seed Potatoes-Norland Red 2#	Good keeper, long-lasting quality, does well in heavy soils
616			S. Potatoes-Russet Burbank 2#	AKA Idaho, ideal for baking, frying and boiling, stores well
617			Seed Potatoes-Superior 2#	Early season, all purpose, mash, boil, fry, stores well
618			Seed Potatoes-Yukon Gold 2#	Rich flavor, buttery taste, early, keeps, sprout resistant
1038			10 Pound Potato Bundle Our Pick	Mixture of our Potatoes, We Pick
611			Onion Sets - Red 1#	Long-Day Northern, salads, sandwiches, and pickling
612			Onion Sets -Yellow 1#	Long-Day Northern, good for cooking & caramelizing
613			Onion Sets - White 1#	Long-Day Northern, strong flavor, use in salads & ethnic
1047			5 Pound Onion Bundle Our Pick	Mixture of our Onions, We Pick
602			Garlic - California Soft Neck	8-10 Divisions Per Bulb
ITEM#	QTY	TOTAL	LANDSCAPING TREES, BUSHES & PLANTS	
911			Spruce-Colorado Blue	Silver/Blue, grows fast when young, 2-3 foot trees
707			Arborvitae-Emerald Green (Zone 3)	Grows 10-15 feet tall, 3-4 feet wide, privacy screen
760			Lilac-Grandma's Hedge (Pu.) (Zone 3-7)	Long-lived, fragrant, extremely hardy, little care
766			Lilac-Late Season (Pink) (Zone 3-7)	Blooms late, overflowing flowers, soft Pink
708			Artic Willow-Dwarf Blue (Zone 3)	Olive-Blue foliage, grows in heavy clay and flooded soil
785			Forsythia-Northern Gold (Zone 3)	Yellow, often grows up to 7 feet tall and 7 feet wide
782			Mock Orange-Blizzard (Zone 3)	White, smells like orange blossoms, plant w/walnuts
702			Beach Plum (Zone 3)	Edible fruit, good for salty, gravely and sandy soils

ITEM#	QTY	TOTAL	LANDSCAPING TREES, BUSHES & PLANTS	
698			Arrowwood-Blue Muffin (Zone 3)	Dark Green foliage, Blue berries, Red-Purple in fall
784			Bridal Wreath-Renaissance (Zone 3)	White, fountain shape, arching displays, full sun
700			Wisteria-Summer Cascade (Zone 4)	Purple, Noninvasive variety from Minnesota
780			Almond-Pink Flowering (Zone 4)	Pink flowers, grows to 6', likes drained to moist soil
703			Elderberry-Black Lace (Zone 4)	Dramatic almost Black foliage, with Pink blooms
730			Rose-Above & Beyond (Zone 3)	Apricot/Pink, extreme hardiness, climbing, double flowers
740			R.-Hope for Humanity (Zone 3)	Red w/ Glossy Green Foliage, large repeating cluster blooming
741			Rose-Campfire (Zone 3)	Yellow/Deep Pink, Very Hardy, continual bloom until frost
734			Rose-Music Box (Zone 4)	Hybrid Tea, edged Pink, open Golden, to soft Yellow
743			Rose-Super Hero (Zone 4)	Red, Dark Green foliage, compact shrub, low maintain
737			Rose-Coral Cove (Zone 4)	Coral blooms, Dark Green, compact-mounded shape, own root
742			R.-Champagne Wishes (Zone 4)	Apricot buds, Antique White flowers, own root, low growing
1040			5 Yard Rose Bundle Our Pick	Mixture of our Yard Roses, We Pick
751			Peony-White (Zone 3)	Large creamy white, sweet scent, sturdy, cutting flower
754			Peony-Coral (Zone 3)	Coral Pink, Yellow center, very thick, sturdy, cutting flower
753			Peony-Red (Zone 3)	Fiery Red, rich green foliage, tall & vigorous, eye-catching
758			Peony-Pink (Zone 3)	Classic soft Pink color, sturdy stems, good as a cutting flower
1043			5 Peony Bundle Our Pick	Mixture of our Peonies, We Pick

Pick 2 or More  
\$18 Each

Pick 2 or More  
\$15 Each

ITEM#	QTY	TOTAL	WILDLIFE BUSHES AND TREES	
843			Wildlife-American Hazelnut	Grows to 6-15', grouse, moose, most animals, rich-moist soils
876			Wildlife-Red Osier Dogwood	Grows to 3-15', eye-catching, birds and pollinators, moist soils
877			Wildlife-Silky Dogwood	Grows to 5-15', birds and waterfowl, loves damp and wet soils
886			Wildlife-Saskatoon Serviceberry	Grows to 3-10', food for people, animals and birds, many soils
859			Wildlife-Highbush Cranberry	Grows to 8-15', birds & most animals, many soils & likes water
840			Wildlife-American Plum	Grows to 10-30', animals, erosion control, most soils, hardy
893			Wildlife-Washington Hawthorn	Grows to 15-25', thorn spikes, great cover birds, drained soil
897			Wildlife-Winterberry Holly	Grows to 3-10', likes acidic soil, for birds, toxic to people/dogs
847			Wildlife-Buttonbush	Grows to 6-12', loves water, erosion control, birds & bees
949			Wildlife-Black Willow	Grows to 10-60', fast growing, loves water, erosion control
805			Wildlife-Black Cherry	Grows to 40-70', most animals, birds, deep well drained soil
1049			Wildlife-100 Bundle	Mixture of our Wildlife Bushes, We Pick
801			Mountain Ash/Rowen	Grows to 10-30', most animals, easy to grow, most soils, pretty
846			Maple leaf Viburnum	Grows to 4-6', most animals, grouse and birds nesting, most soil
802			Butternut	Grows to 35-55', many animals, moist soil, can kill other plants
842			Beaked Hazelnut	Grows to 15-25', most animals especially grouse, loam-sand
951			Maple-Red	Grows to 60-90', most animals, well drained soil
953			Maple-Sugar	Grows to 90-120', most animals, maple syrup, sandy-loam
940			Walnut-Black	Grows to 50-75', plant alone can kill other plants, most soils
657			Chestnut-American	Grows to 60-100', edible animals & humans, drained acidic soil

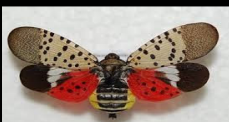
**HARDWOODS & SOFTWOOD - CONTAINERS & PLUGS**

ITEM#	QTY	TOTAL	Increase Your Success Rate By 20% Buy Plugs	25	50	100	250	500		
974			Pine Plugs-Red	Drained, dry sandy soils	25/\$30	50/\$55	100/\$100	250/\$225	500/\$425	PLEASE CALL THE OFFICE TO PLACE ANY LARGE ORDERS ABOVE 500 PIECES
976			Pine Plugs-White	Moist, drained, dry soils	25/\$30	50/\$55	100/\$100	250/\$225	500/\$425	
972			Pine Plugs-Jack	Dry, acidic, sandy, loam	25/\$30	50/\$55	100/\$100	250/\$225	500/\$425	
977			Spruce Plugs-Black	Moist, acidic wet soil	25/\$30	50/\$55	100/\$100	250/\$225	500/\$425	
980			Spruce Plugs-White	Moist, sand, drained, clay	25/\$30	50/\$55	100/\$100	250/\$225	500/\$425	
978			Spruce Plugs-Norway	Loamy, moist, sandy, clay	25/\$30	50/\$55	100/\$100	250/\$225	500/\$425	
971			Fir Plugs-Balsam Fir	Moist, drained, acidic soil	25/\$30	50/\$55	100/\$100	250/\$225	500/\$425	
970			Fir Plugs-Frasier Fir	Rocky, mineral soils	25/\$30	50/\$55	100/\$100	250/\$225	500/\$425	
988			Tamarack Plugs	Organic, wet or moist soil	25/\$30	50/\$55	100/\$100	250/\$225	500/\$425	
987			Cedar Plugs-White	Organic, wet or moist soil	25/\$30	50/\$55	100/\$100	250/\$225	500/\$425	
989			Hemlock Plugs	Moist but well-drained soil	25/\$30	50/\$55	100/\$100	250/\$225	500/\$425	
983			Birch Plugs-Yellow	Moist, acidic soil	25/\$35	50/\$65	100/\$115	250/\$250	500/\$450	
982			Birch Plugs-White	Best w/slightly acidic soil	25/\$35	50/\$65	100/\$115	250/\$250	500/\$450	
Oak Plugs Sold In Packs Of 10				10	20	50	100	250		
981			Oak Plugs-Swamp White	Clay, loam, drained, moist	10/\$30	20/\$50	50/\$110	100/\$200	250/\$425	
985			Oak Plugs-Bur	Rich, rocky & clays if sun	10/\$30	20/\$50	50/\$110	100/\$200	250/\$425	
984			Oak Plugs-White	Clay, loamy & sand	10/\$30	20/\$50	50/\$110	100/\$200	250/\$425	
986			Oak Plugs-Red	Loamy, moist, sandy	10/\$30	20/\$50	50/\$110	100/\$200	250/\$425	



Western Peninsula Invasives Coalition Public Alert! Call: (906) 875-3765 to Report Sightings

Spotted lanternfly feeds on a wide range of fruit, ornamental and woody trees. Spotted lanternflies are invasive and can be spread long distances by people who move items containing egg masses. They prefer to feed on the invasive Tree of Heaven but also feed on a wide range of crops and plants, including grapes, apples, hops, walnuts and hardwood trees. Be on the lookout for this potential invader.



**PLANTING SUPPLIES & TREE PROTECTORS**

1000		Plantra Tree Protectors - 5 foot vented tubes (NRCS Cost Share)	\$6 Each	10/\$55	50/\$250
1001		Vinyl Tree Wraps - 5 Wraps in a Pack	\$12 for a pack of 5 wraps		
1002		Bamboo Stake 6 Feet Tall - Many uses	\$2 EACH	10/\$18	50/\$75
1003		Rooting Gel 1 Oz - Add to 1 gallon of water for root dip	\$3 EACH OZ		
		SUBTOTAL	DELIVERY IS ONLY GUARANTEED FOR ADDRESSES IN IRON & BARAGA COUNTIES LOCATED OFF YEAR ROUND PAVED OR WELL MAINTAINED GRAVEL ROADS. IF YOU LIVE OUT OF THE DELIVERY AREA, BUT CLOSE TO US, CALL: (906) 875-3765		
		ADD TAX 6%			
		CREDIT CARD FEE (\$0-\$300 = \$5) (\$300+ = \$10)			
		FOR HOME DELIVERY FEE SEE CHART			
		DONATION	\$0-\$299 = \$25	\$300-\$499 = \$35	
		GRAND TOTAL	\$500-\$699 = \$45	Large Order? \$700+ = \$50	

WE ACCEPT CHECK, MONEY ORDER, CASHIER CHECK AND CREDIT CARDS WITH A FEE - PLEASE DO NOT MAIL CASH

CREDIT CARD NUMBER		NAME ON CARD			
EXP. DATE	SECURITY CODE ON BACK			BILLING ZIP CODE	

<b>PICK YOUR DAY &amp; TIME</b>  DO NOT SHOW UP EARLY ORDER WILL NOT BE READY! WE NEED A PHONE NUMBER WE WILL CALL TO CONFIRM	AMASA: Thursday, April 25th, 2024 CST	N/A	N/A	N/A	4PM-5PM	5PM-6PM
	AMASA: Friday, April 26th, 2024 CST	10AM-12	N/A	2PM-4PM	4PM-5PM	5PM-6PM
	AMASA: Saturday, April 27th, 2024 CST	10AM-12	12PM-1PM	N/A	N/A	N/A
	AMASA: Sunday, April 28th, 2024 CST	N/A	12PM-1PM	N/A	N/A	N/A
	BARAGA: Saturday, April 27th, 2024 EST	N/A	N/A	2PM-4PM	N/A	N/A
	LAND O' LAKES: Sunday, April 28th, 2024 CST	N/A	1PM-2PM		N/A	N/A

**FOR AMASA** Off of US HWY 141, 1 Mile North of Tall Pines Outpost, turn East onto Corral Road, Find Us @ 163 Corral Road Amasa, Michigan 49903, There will be signs on US 141 & Corral Road (From Iron River take Bates-Amasa (643) to 141 North) (From Covington take 141 South to Corral Road)

**FOR BARAGA** On M38, 1 mile West of Casino, turn North onto Ojibwa Industrial Park Rd and Head to 16403 Ojibwa Industrial Park Rd Baraga, Michigan 49908 (From Nisula take M38 East to Ojibwa Industrial Park Road)

**FOR LAND O' LAKES** Take HWY 45 to County B West; look for: Land O' Lakes Public Library - 4242 County B Road, Land O' Lakes, WI 54540, (Park by the ATV Trail) (We will have a silver trailer)

NAME	PHONE
------	-------

MAILING ADDRESS

CITY	STATE	ZIP CODE	EMAIL
------	-------	----------	-------

DELIVERY CLIENTS: PLEASE GIVE US SIMPLE DIRECTIONS, HOUSE COLOR, BARN COLOR & ANY HELPFUL TIPS ON FINDING YOU TO DELIVER

DELIVERY ADDRESS

CITY	STATE	ZIP CODE	OTHER PHONE
------	-------	----------	-------------



**Forestry Questions?**

**Interested in Farm Bill Programs?**



The Iron Baraga Conservation District has a full-time Forester on staff who provides free services and assistance with no obligation for all private landowners within Iron and Baraga Counties. Carly Graff, our Forester, is available to walk your land (with or without you) and answer your questions about your forested property, and talk with you about programs that are available to enhance your land, along with tax incentives that could save you money.

Environmental Quality Incentives Program (EQIP) helps producers access cost-share assistance in order to implement conservation practices. With a completed conservation plan, an application will be based on the specific goals and concerns. 200 practices are part of EQIP and include everything from cover crops and seasonal high tunnels to erecting livestock fencing.



Call the Iron Baraga CD CTAI Conservationist Gina Jarvi, to learn more! (906) 353-8225 Gina is based out of the Baraga NRCS office at 16403 Ojibwa Industrial Park Road, Baraga, Michigan 49908, or you can email her at: [ctai.iron.baragacd@gmail.com](mailto:ctai.iron.baragacd@gmail.com)

To set up a meeting or site visit, call her cell at (906) 236-5108, or call the office at (906) 875-3765, or email [fap.iron.baraga@macd.org](mailto:fap.iron.baraga@macd.org)