

DTI REGION VI

PROGRAMS AND SERVICES for FOOD MSMEs in Western Visayas

Jade Gonzales
Planning Officer, OIC, NDD, DTI VI

Presented during the Forum on Standardization, Productivity, Innovation, and Certification for Enterprises in Food Processing in Western Visayas;
April 29-30, 2015; University of the Philippines-Visayas, Iloilo City Campus

Programs

- **Shared Service Facility (SSF)**
- **Industry Clustering Development Program**
- **SME Roving Academy (SMERA)**
- **Other Services/Assistance**

Shared Service



F Facilities



PROJECT DESCRIPTION

- A common service facilities or production centers for certain processes to give MSMEs access to a better technology and more sophisticated equipment to accelerate their bid for competitiveness;
- The Shared Service Facility (SSF) project aims to improve the quality and productivity of microenterprises and SMEs by addressing the gaps and bottlenecks in the value chain of priority industry clusters

Purpose

The provision of SSF shall:

- Enable MSME's to increase their productivity
- Accelerate MSME competitiveness by giving them access to better technologies and more sophisticated equipment.
- Encourage the graduation of MSME's to the next level where they could tap a better and wider market share and be integrated in the global supply chain.
- Address the gaps and bottlenecks in the value chain of priority industry clusters.

Priority Industry Clusters

The following identified industry clusters shall be given priority in the approval of SSF project proposals:

- Abaca
- Bamboo
- Coconut/Coco Coir
- Pineapple
- Calamansi
- Milkfish
- Tuna
- Seaweeds
- Fashion Accessories
- Gifts, Décor & Housewares
- Wearables & Homestyle
- Metal & Metal-works
- Renewable Energy (off-grid)
- Cacao
- Dairy
- Muscovado sugar
- Organic Fertilizer
- Processed Food

Criteria for Cooperator

- A cooperator can either be a government entity that will include but not limited to LGUs, state universities/colleges and technical or vocational schools or private entity that will include non-government organizations, people's organizations and cooperatives.
- For LGUs, State Universities/Colleges, Technical Vocational Schools and other similar government academic or training institutions
 - Must be willing to be a cooperator of SSF
 - Must be capable of providing counterpart support in terms of
 - Suitable facilities to house the machinery and equipment
 - Personnel
 - Working Capital
 - Must be strategically located to service the beneficiaries of the SSF

ESTABLISHED SHARED SERVICE FACILITIES IN REGION VI

- Project Title: Upgrading of CASCOFAMCO Coconut Oil Mill
- Project Location: Brgy. Ondoy, Ivisan, Capiz
- Project Beneficiaries: 3,093 coconut farmers/growers
- Launched: July 29, 2013



Project Title: Upgrading of CASCOFAMCO'S Coconut Oil Mill

Equipment: 1 Coconut Oil Expeller, 1 Cooling Storage Tank and 1 Elevated Mixing Tank



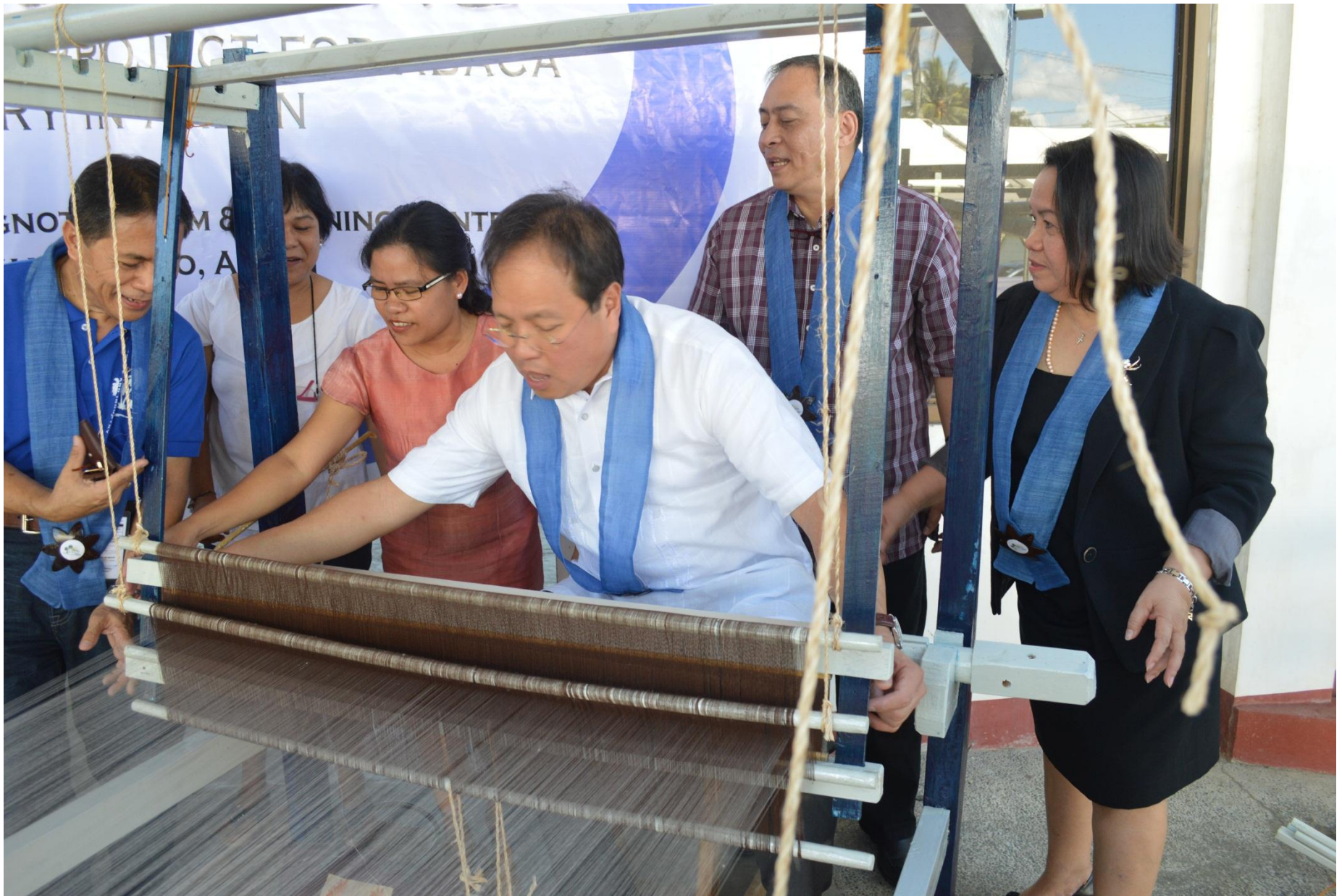
CASCOFAMCO Workers Operating the newly installed Coconut Oil Expeller



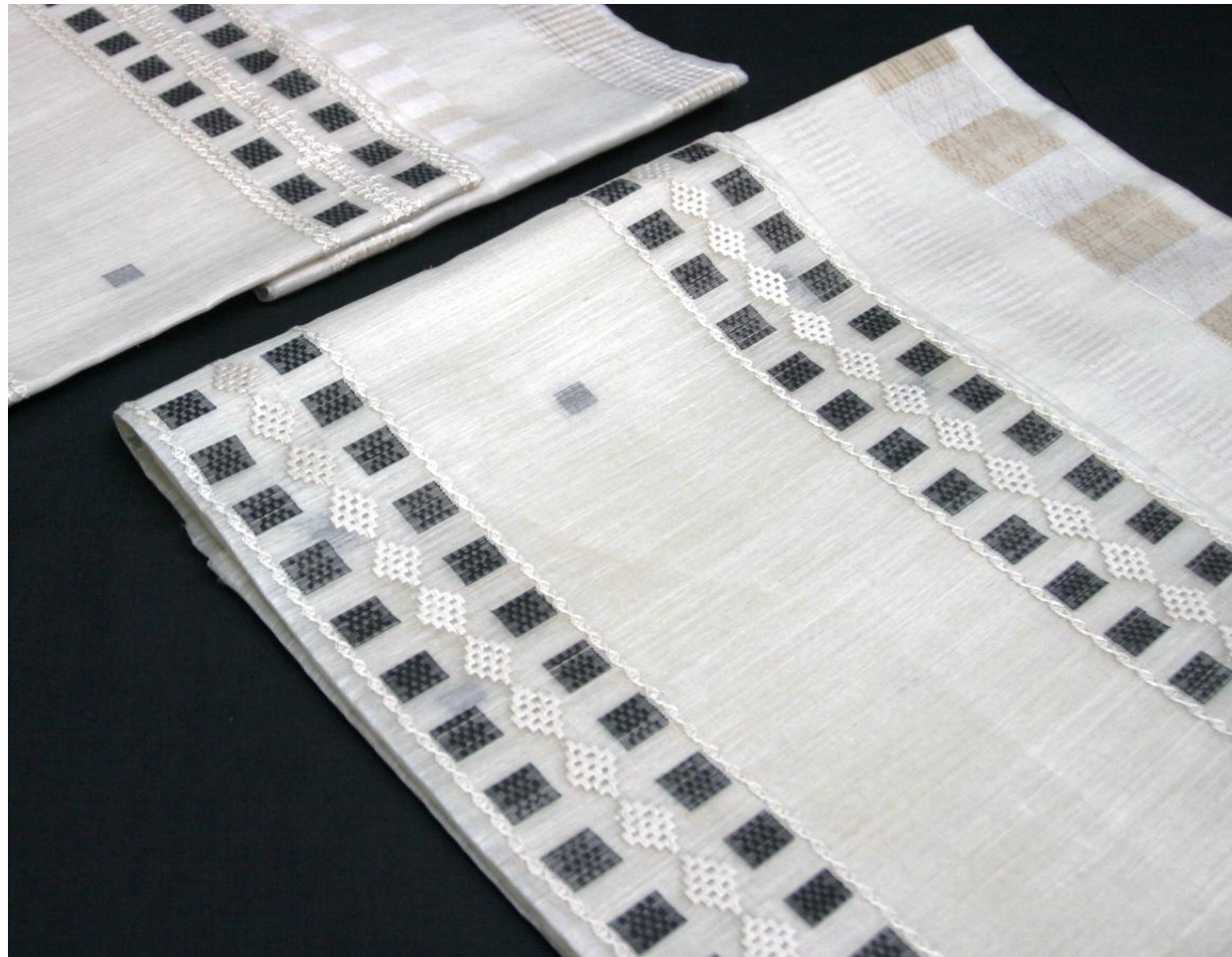
- Project Title: Facility Support on Abaca Fiber Industry in Aklan (6 Sites)
- Location: Kalibo, Makato, and Lezo, Aklan
- Beneficiaries: 150 weavers , knotters, warpers
- Date Launched: April 30, 2013



Project Title: Facility Support on Abaca Fiber Industry in Aklan
Equipment: 50 units 40"width looms complete with accessories



Usec. Ponciano Manalo throwing the shuttle as Usec. Merly Cruz, RD, Nic. Abad, PD Dads Cadena and HAMPCO representatives look on.



Abaca-Silk

- Project Title: Acquisition of High Speed Sewing Machines for Women's Community Garment Project
- Location: Barangay Doldol, Valladolid, Negros Occidental
- Beneficiaries: 51 Women member-beneficiaries
- Date Launched: July 19, 2013



Project Title: Acquisition of High Speed Sewing Machines for Women's Community Garment Project

Equipment: 8 units High-Speed Sewing Machines



BDAT-PEACE Women Sewing garment for contractors.

- Project Title: Food Processing Facility for Guintapagin ARB MPC
- Location: Brgy. Tapacon, Bingawan, Iloilo
- Beneficiaries: 101 member-farmers
- Date Launched - August 14, 2013



Director Dominic P. Abad of DTI 6, inspects the SSF for Guintapagin



Banana Pickles



Banana in Syrup



Banana Muffins



Industry Clustering Development Program

Project Description

- Industry Clustering is an organized approach in industrial development and promotion of MSMEs. It necessitates the operation of upstream (*raw mat suppliers, production inputs*) and downstream (*logistics, value-adding, packaging and marketing*) economic activities to support the whole value chain.
- Geographical concentrations of interconnected companies, specialized suppliers, service providers, firms in related industries, and associated institutions (*e.g., universities, standards agencies, trade asso.*) in a particular fields that compete but also cooperative



Priority Industries (National)

- Cacao
- Coco Coir
- Coffee
- Processed Fruits & Nuts
- Rubber
- Tourism Support Industries



SME Roving Academy (SMERA)

A continuous learning program for the development of micro, small and medium enterprises to become competitive in the domestic and international (global) markets



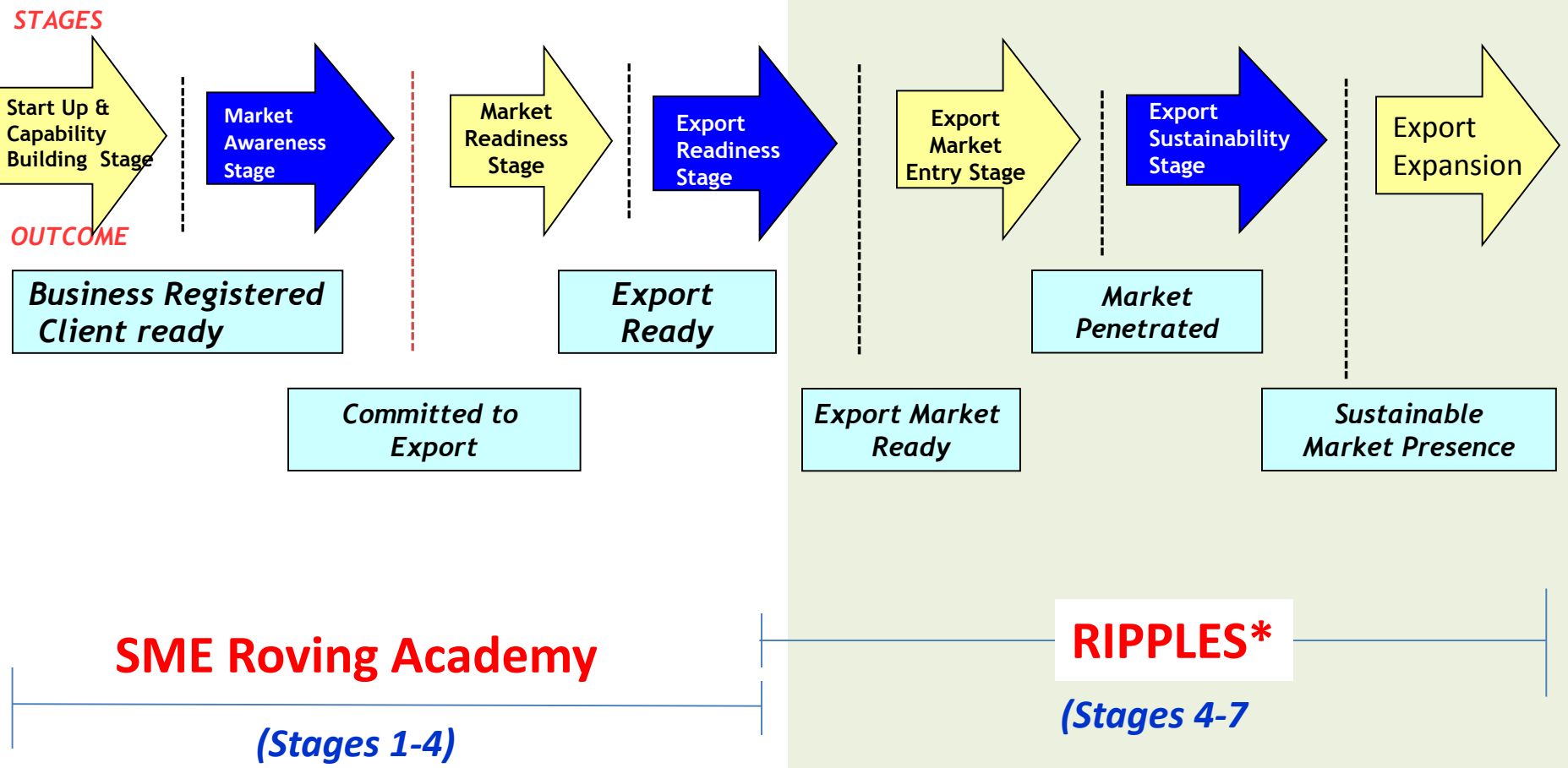
SME ROVING ACADEMY

- **STRATEGIES**

- Integrate the business development services for MSMEs at the national & local levels
- Establish the Provincial, Regional and National Entrepreneurship Development Networks
- Manage an inclusive promotion program



SME Roving Academy along the EPP Framework



*Regional Interactive Platform for Philippine Exporters

SME ROVING ACADEMY

- **LEARNING STAGES**

Stage 1: Start-Up & Capability Building Stage

Stage 2: Market Awareness Stage

Stage 3: Market Readiness Stage

Stage 4: Export Readiness Stage

*each stage has suggested interventions
and qualifying criteria*

SME ROVING ACADEMY

- **PARTNER AGENCIES**

Business Development Services (BDS) Providers

Local Government Units (LGUs)

Training Institutions

Chamber, Academe

Financing Institutions

Trade & Industry Associations, other gov't/non-government organizations

OTHER ASSISTANCE

PRODUCT DEVELOPMENT

Product Design

Design of a new product, product adaptation, product diversification or expansion of existing product or line based on market needs and available technology

Package Design

New design or redesign of packages of food and non-food products based on requirements of target market

Raw Materials Manipulation

Manipulation and treatment of raw materials to enhance its use and functionality for expansion of existing product lines and development of new products

Product Development Clinics

1st Phase – design orientation, trends briefing

2nd Phase – product development direction, product design, design development, prototyping

3rd Phase – prototype checking and product design expansion



OTHER ASSISTANCE

- Marketing Assistance through Participation of MSMEs to Trade Fairs (Provincial, Regional or National)