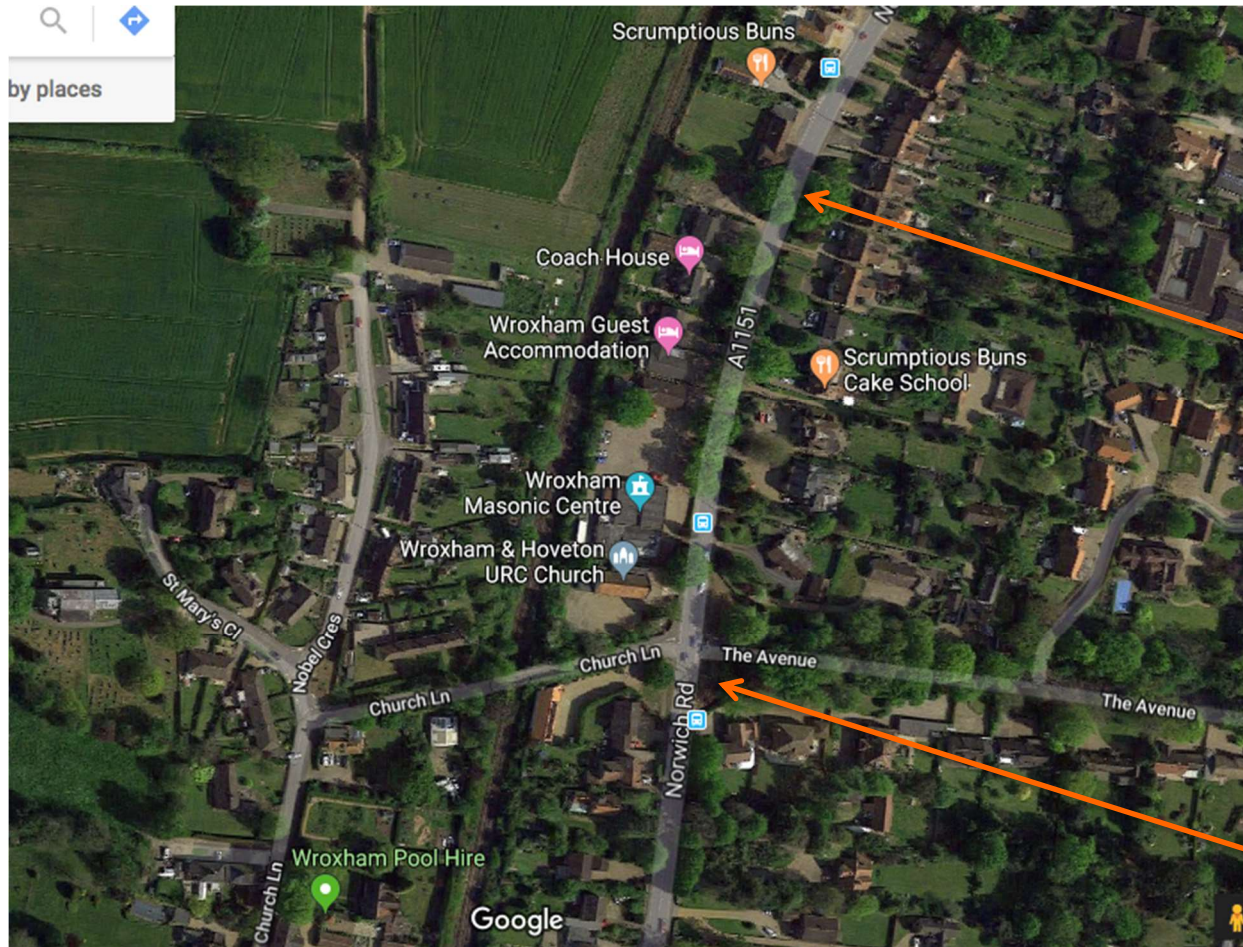


Wroxham SAM 2 Data

Key for Lampposts / street posts for SAM positions

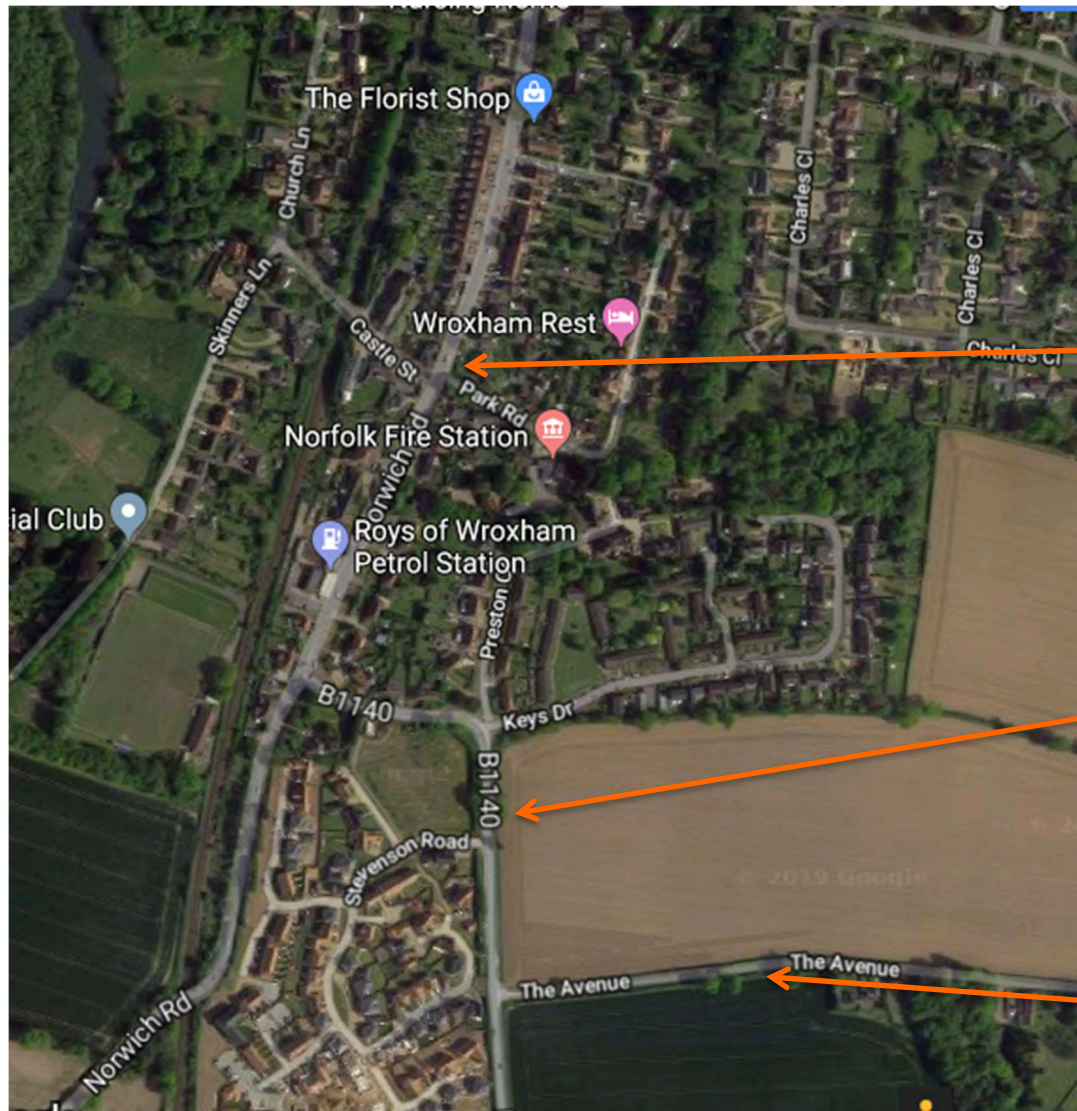
Designated	Description of position	
A	Lamppost 25 On Norwich Road (A1151) facing traffic going <u>TOWARDS</u> Norwich	
B	Lamppost 15 On Norwich Road (A1151) facing traffic going <u>TOWARDS</u> Norwich	
C	Post adjacent to bus stop on Salhouse Road (B1140), facing traffic coming <u>FROM</u> Salhouse	
D	Post adjacent to bus stop Salhouse Road (B1140), facing traffic going <u>TOWARDS</u> Salhouse	
E	The Avenue (Post between B1140 and Yacht club turn) facing traffic coming <u>FROM</u> B1140	
F	The Avenue (Post between B1140 and Yacht club turn) facing traffic going <u>TOWARDS</u> B1140	
G	Lamppost 30 On Norwich Road (A1151) facing traffic coming <u>FROM</u> Norwich	
H	On Avenue on post opposite No 38. Facing traffic going <u>TOWARDS</u> Salhouse road / Yacht club.	
J	On Avenue on post opposite No 38. Facing traffic coming <u>FROM</u> Salhouse road / Yacht club	
K	Post on Avenue at junction with Beech Road. Facing traffic <u>FROM</u> Norwich Road	
L	Post on Avenue at junction with Beech Road. Facing traffic going <u>TOWARDS</u> Norwich Road	
M	Post on Avenue at junction with Staitheaway Road. Facing traffic going <u>TOWARDS</u> Norwich Road	
N	Post on Avenue at junction with Staitheaway Road. Facing traffic <u>FROM</u> Norwich Road	

Maps showing the positions A to N where SAM'S have been mounted for various periods since February 2017



Position G: (Lamppost 30). Monitor facing traffic travelling towards Hoveton.

Position A: (Lamppost 25) Monitor facing traffic travelling towards Norwich.



Position B, (Lamppost 15). Monitor facing traffic travelling towards Norwich

NOTE: Post utilised for bi-directional monitoring.

Position C: Post adjacent to bus stop Monitor facing traffic travelling **TOWARD** Salhouse

Position D: Post adjacent to bus stop. Monitor facing traffic coming **FROM** Salhouse

NOTE: Post utilised for bi-directional monitoring.

Position E: Monitor facing traffic travelling **FROM** B1140

Position F: Monitor facing traffic travelling **TOWARD** B1140



NOTE: Post utilised for bi-directional monitoring.

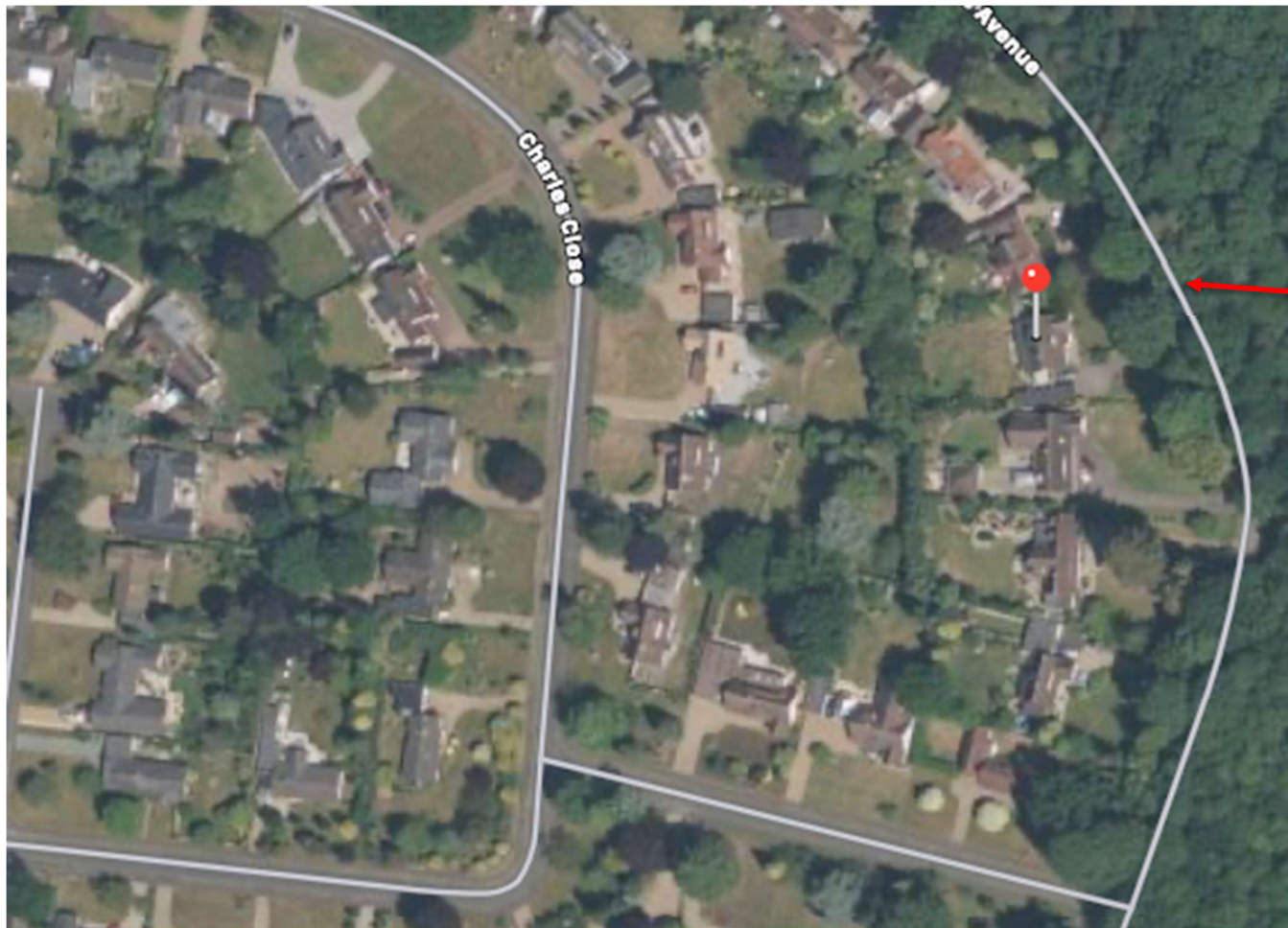
Position K: Post on Avenue at junction with Beech Road. Facing traffic **FROM** Norwich Road

Position L: Post on Avenue at junction with Beech Road. Facing traffic going **TOWARDS** Norwich Road

NOTE: Post utilised for bi-directional monitoring.

Position M: Post on Avenue at junction with Staithe Way Road. Facing traffic going **TOWARDS** Norwich Road

Position N: Post on Avenue at junction with Staithe Way Road. Facing traffic **FROM** Norwich Road



NOTE: Post utilised for bi-directional monitoring.

Position H: On Avenue on post opposite No 38. Facing traffic going **TOWARDS** Salhouse Road / Yacht club.

Position J: On Avenue on post opposite No 38. Facing traffic coming **FROM** Salhouse Road / Yacht club