

Tesla Model S 2013

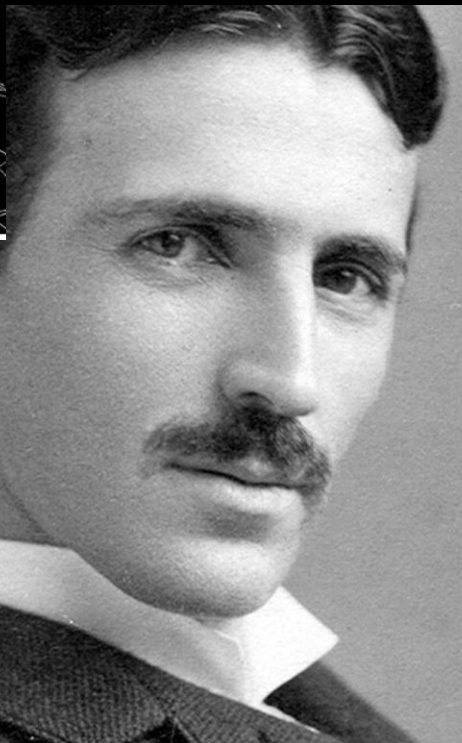
Manufacturer: Tesla Motors
 Production: 2012-present
 Assembly: Tesla Factory
 Foreword: California, United States
 Class: Full-size sports sedan
 Body style: 4-door fastback
 Layout: Rear-motor, rear-wheel drive

Electric motor

Three-phase AC induction motor

85 kW/h (Performance)
 310 kW (420 hp), 443 ft-lb (600 N·m)
 85 kW/h
 220 kW (260 hp), 325 ft-lb (440 N·m)
 60 kW/h
 228 kW (302 hp), 317 ft-lb (430 N·m)

Transmission: Single-speed fixed gear (9.73:1)
 Battery: 85 or 60 kW·h lithium ion battery

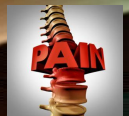
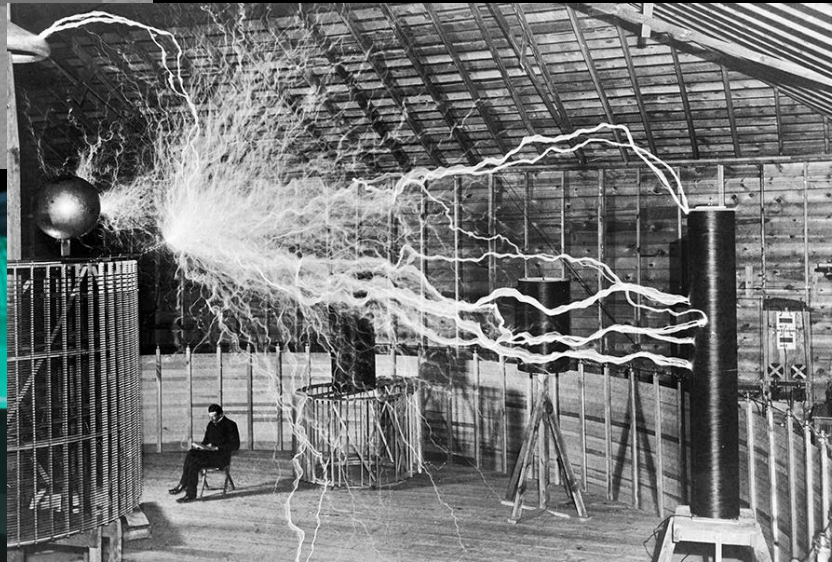


NIKOLA TESLA

HOW A BEAUTIFUL MIND INVENTED THE FUTURE



PEMF WELLNESS
PEMF WELLNESS
TECHNOLOGY
 "The Future Is Here"

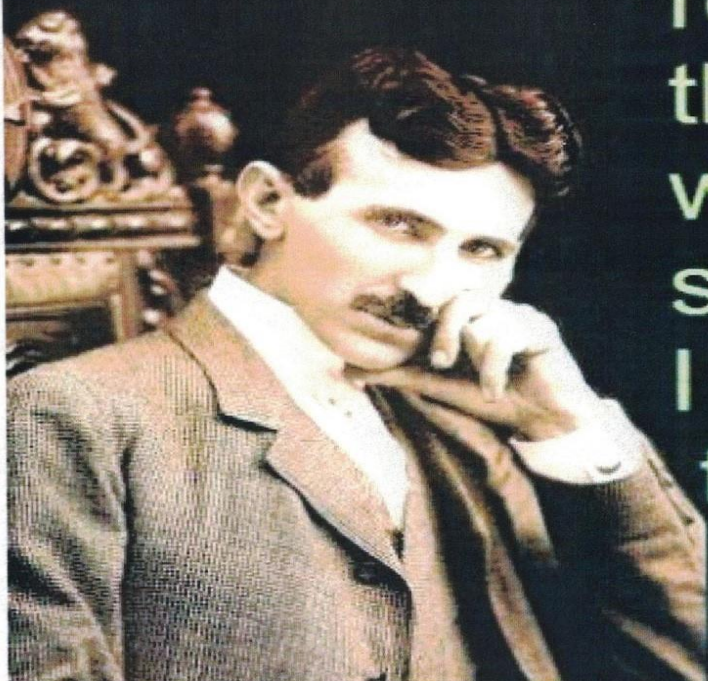


**CHRONIC
PAIN**



Centurion[®]
Tesla Technology for Human Health

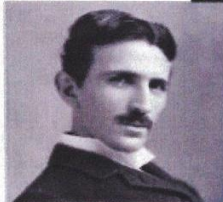
Nikola Tesla



"My brain is only a receiver, In the Universe there is a core from which we obtain knowledge, strength, inspiration. I have not penetrated into the secrets of this core, but I know that it exists."



**CHRONIC
PAIN**

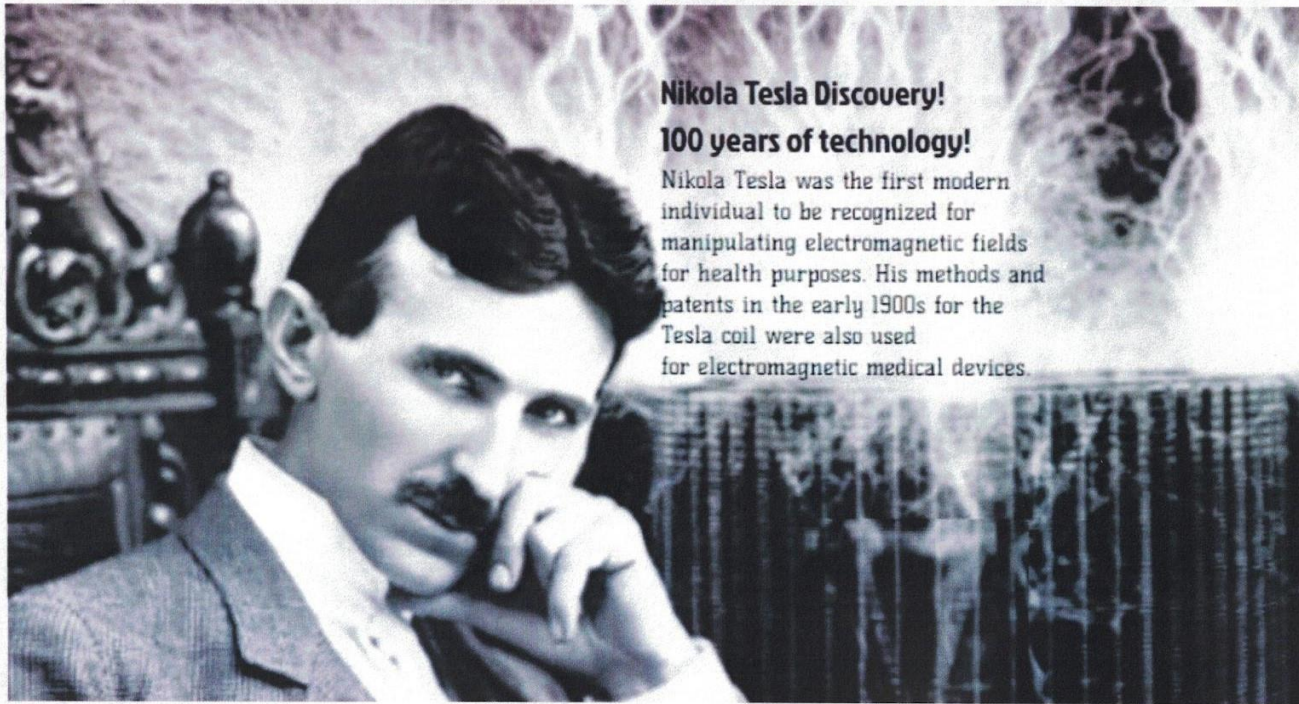
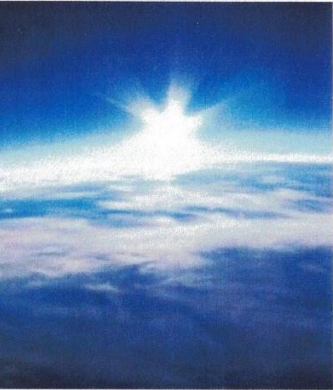


Nikola Tesla founded the Electrotherapeutic Society in 1890 after developing a coil "pulse diathermy" coil.

More than a Century in the making....

PEMF is a technology more than 100 years old. Specific PEMF devices were FDA cleared for stimulating bone growth in 1979, and for post-operative edema and pain in 1987. In 2004, a PEMF device was cleared as an adjunct to cervical fusion surgery, and in 2011 another was cleared as a treatment for depressed individuals who are unresponsive to medication.

PEMF surged in popularity in recent decades after NASA employed it for retaining and restoring astronauts' bone and muscle. Visit NASA's website for some interesting photos of the Earth's magnetic field.



Nikola Tesla Discovery!

100 years of technology!

Nikola Tesla was the first modern individual to be recognized for manipulating electromagnetic fields for health purposes. His methods and patents in the early 1900s for the Tesla coil were also used for electromagnetic medical devices.

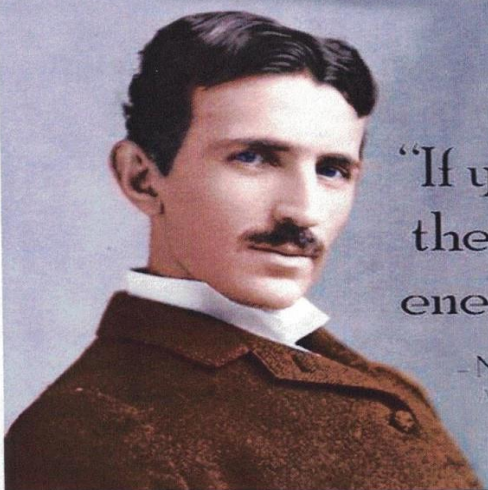


Centurion[®]
Tesla Technology for Human Health



**CHRONIC
PAIN**

PEMF TECHNOLOGY WAS INVENTED BY NIKOLA TESLA



THE FUTURIST

“If you want to find the secrets of the universe, think in terms of energy, frequency and vibration.”

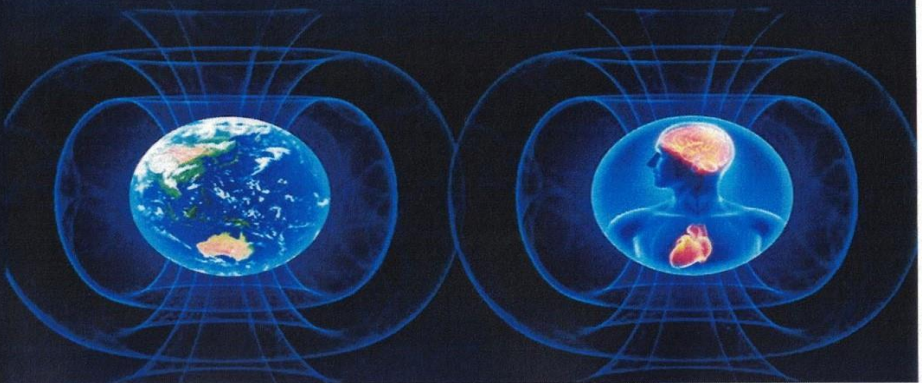
- Nikola Tesla (1856-1943)
An All Round Scientist



**IN 2009 NASA WAS AWARDED
A US PATENT FOR THEIR RESEARCH
ON PEMF WITH OVER 2000 DOUBLE
BLIND STUDIES & 10000 RESEARCH PAPERS**

ONI
FULL BODY MAT

 The PEMF Shop



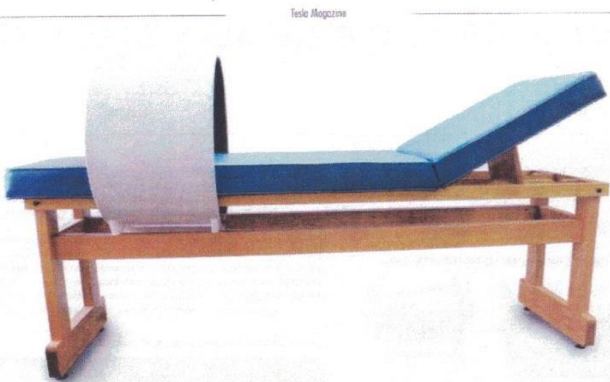
Centurion[®]
Tesla Technology for Human Health



CHRONIC PAIN



Centurion®
Tesla Technology for Human Health



The TESLATRON PEMF bed from Centurion

variety of indications such as pain management and circulation problems.

Instead of the 60hz sine wave that was used in the earlier inventions that relied on the city's power distribution system of that time, these modern electromagnetic therapy machines have been updated to create a wide variety of frequencies, and wave shapes that are proved to work effectively and safely. With the Centurion system, the cylinder Tesla coil design has remained because it is tried and true. This design has been proven to provide an even electromagnetic field without the hot spots that are found in the flat mat design. Seasoned PEMF - Pulsed Electromagnetic Field Frequency experts admit that when the body is immersed inside the coil, the healing "electric" field from the magnetic field is absorbed more evenly by the cells which results in speeding up the healing process. The drawback is that it is a bit more difficult to get into the coil - laying on a mat is simple to do. Centurion has developed a model called the Teslatron that features a coil that moves along rails of a table. This is the perfect device for clinics, and hospitals.

As we can see, Tesla's ideas of increasing human energy have returned and are now accepted by government institutions. It's now up to the medical schools to rethink the Flexner report and finally teach the subject to the doctors. I am not sure how the hospitals and doctors are going to react to this "new" technology, but I feel that it is up to the public to make them at least aware that it exists. This is where you can help...show them this article and give them a copy of

Tesla Magazine

Tesla Magazine and ask them to bring it into their scope of practice. Or, take healthcare into your own hands...try out a Tesla PEMF Machine at a spa near you that offers this service.



SHADWAY JOHN KIRKBY'S TREATMENT FROM NIKOLA TESLA



Tesla Magazine

With regard to the electrical actions in general, and by analogy, it was reasonable to infer that the physiological effects, however complex, might be resolved in three classes. First the statical, that is, such as are chiefly dependent on the magnitude of electrical potential; second, the dynamical, that is, those principally dependent on the quality of electrical movement or current's strength through the body, and third, effects of a distinct nature due to electrical waves or oscillations, that is, impulses in which the electrical energy is alternately passing in more or less rapid succession through the static and dynamic forms.

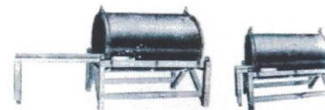
Most generally in practice these different actions are co-existent, but by a suitable selection of apparatus and observance of conditions the experimenter may make one or other of these effects predominate. Thus he may pass through the body, or any part of the same, currents of comparatively large volume under a small electrical pressure, or he may subject the body to a high electrical pressure while the current is negligibly small, or he may put the patient under the influence of electrical waves transmitted, if desired, at considerable distance through space.

While it remained for the physician to investigate the specific actions on the organism and indicate proper methods of treatment, the various ways of applying these currents to the body of a patient suggested themselves readily to the electrician.

-Nikola Tesla

Fast forward to 1907, and we begin to see a clear picture of where electrotherapy was headed. In the National College of Electrotherapy hand guide, several apparatuses are presented to the therapist to demonstrate how electromagnetic field therapy can be applied. Electromagnetic beds and large cylinders of coils of wire are used to treat the patient with frequencies using the 60Hz power system that was supplied at that time.

Here are a few excerpts...



The Body Magnetone - Taken from the Electro-Therapeutic Guide 1907

THE BODY MAGNETONE

The above two cuts show the body magnetone for immersion of the trunk in the alternated electro-magnetic field. The platform is pulled out, the patient lies down, and the platform and body is

pushed into the tube and saturated with the electro-magnetisation. The body magnetone is eighteen inches in diameter inside, is two inches and a half thick, and is eighteen inches long, contains a mile and a half of wire and two hundred and ten simple and compound magnet cores, and is so arranged as to surround any part of the trunk.

Of what value is magnetotherapy?

From a total of 50,000 treatments of all sorts, upon all kinds of patients, without any attempt at selection, and with applications sometimes lasting for hours, and though some cases continued for months, the conclusions are, that the applications are in the main beneficial, and that in the hands of a careful, prudent practitioner, the apparatus is entirely harmless.

Magnetisation is best in condition of low vitality, with a sub-normal temperature, and insufficient oxidation of the blood, marked by poor circulation, anaemia, and therefore where coldness persists. The results in many cases of rheumatism are most excellent, even in some of the most obstinate forms, and if used for nothing else, would be a great boon to humanity. Among other painful conditions which were relieved were those of floating kidney, chronic cystitis, neuralgias, headaches, dental caries, phthisis, rheumatism, gout, and it was found very useful in hastening convalescence.

The technique of the applications is extremely simple, and the apparatus cannot get out of order. All that is necessary is to attach the wire to a rein cable with a plug, which is screwed into a lamp socket, and the current turned on, either by the usual thumb snap, or better by a knife switch, and immerse the body or part in the magnetic field.



Woman receiving treatment in The Body Magnetone

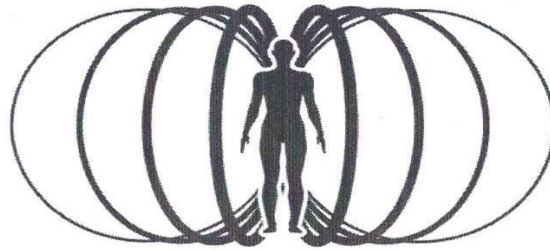
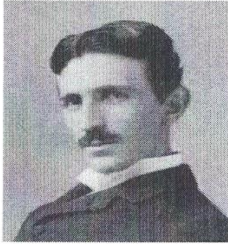
This form of healthcare known as electrotherapeutics became popular and flourished until 1910. It fell out of favour with the doctors and traditional medical universities who preferred surgery and drugs. When schools such as the College of Electrotherapy were closed mostly due to the findings of the Carnegie Foundation's Flexner report which supported drugs over electromagnetic fields, this Tesla based medicine became lost knowledge to the American public.

Today, with the invention of the internet - the patents of this lost technology has been rediscovered and re-released by companies such as Centurion that are located in Calgary and Mississauga. They are legal Health Canada approved medical devices that works on a wide

Centurion Systems Teslatron, PEMF Technology is Designed after the Tesla original Technology.



Pioneers in the Field of PEMF



Centurion[®]
Tesla Technology for Human Health

NIKOLA TESLA

In 1895, through the genius of Nikola Tesla, the Niagara Falls Power Company began sending alternating current (AC) to Buffalo, NY, twenty-five miles away. Cities throughout the world followed suit and made commercial AC power available to the general public, even miles from the power generating station. As a result, Tesla's high voltage loop devices, which were powered by AC, started to become widely known and applied.

In 1898, Tesla published a paper that he read at the eighth annual meeting of the American Electro-Therapeutic Association in Buffalo, NY. He states that one of the early observed and remarkable features of pulsed magnetism was its apparent harmlessness, which made it possible to pass relatively great amounts of electrical energy through the body of a person. loops up to three feet in diameter were used for magnetically treating the body without contact, though ten to a hundred thousand volts were present "between the first and last turn". Tesla concludes that bodily "tissues are condensers" in the 1898 paper, which is the basic component (dielectric) for an equivalent circuit only recently developed for the human body. In fact, the relative permittivity for tissue at any frequency from ELF (10 Hz-100 Hz) through RF (10 kHz-100 MHz) exceeds most commercially available dielectrics on the market.

This unique property of the human body indicates an inherent adaptation and perhaps innate compatibility toward the presence of high voltage electric fields, probably due to the high transmembrane potential already present in cellular tissue. Tesla also indicates that the after-effect from his loop treatment was certainly beneficial.





DR. ANTOINE PRIORE

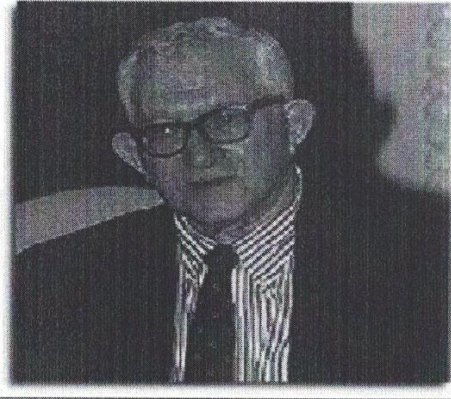
Dr. Antoine Priore's electro-magnetic therapy machine was perfected during the 1960's and early 70's while a team of leading French scientists demonstrated conclusive, total remissions of terminal tumors and infectious diseases in hundreds of laboratory animals - all funded by the French Government. Complete remission of the treated diseases was attained, and the animals' immune systems were all restored to normal.

Antoine Priore began working in 1944-45 on the development of an electro-magnetic device which cured cancer. He received backing and help from some very interesting and courageous individuals including the world-famous immunologist Dr. Raymond Pautrizel of the University of Bordeaux, who did all the animal work. Dr. Pautrizel took the research in another direction using the machine to treat sleeping sickness in animals, which was his specialty. Sleeping sickness was of primary concern to Dr. Pautrizel because of its prevalence in tropical countries.

When he injected rabbits with the pathogen trypanosome, which causes sleeping sickness, the rabbits would all die within 72 hours. But when exposed to the Priore device, these same rabbits would live. Yet their blood was still teeming with the trypanosomes which could be extracted from the radiated rabbits and injected into other control rabbits, which would then die. This implies that the machine was doing something electro-magnetically to the rabbits' immune systems such that they were able to fight off a lethal disease which would normally kill them in 72 hours!



**CHRONIC
PAIN**



DR. ABRAHAM LIBOFF

A modern-day physicist and inventor, Dr. Abraham Liboff is the discoverer of electric-field and geomagnetic ion cyclotron resonance. This theory reliably explains the resonant interaction of static magnetic fields with endogenous AC electric fields in biological systems.

A physicist with Oakland University, he has helped introduce significant physics principles into the field of bioelectromagnetics. His "Method and Apparatus for the Treatment of Cancer" (US Patent #5,211,622) tunes an alternating magnetic field superimposed on a static magnetic field, to maintain a combined effect that has the proper cyclotron resonance frequency so that the neoplastic tissue containing a preselected ion can be treated to bring about a decrease in the proliferation rate of the cancer cells. It also can be combined with a chemotherapeutic agent for a synergistic effect. It is noted in the patent disclosure that "up to 100 days of treatment will provide beneficial results".





GEORGES LAKHOVSKY

Georges Lakhovsky's philosophy was that "the amplitude of cell oscillations must reach a certain value, in order that the organism be strong enough to repulse the destructive vibrations from certain microbes." He goes on to say, "The remedy in my opinion, is not to kill the microbes in contact with the healthy cells but to reinforce the oscillations of the cell either directly by reinforcing the activity of the blood or in producing on the cells a direct action by means of the proper rays." To prove his point, Lakhovsky's Radio-Cellulo-Oscillator (RCO) produced low frequency ELF all the way through gigahertz radio waves with lots of "extremely short harmonics." His book, "The Secret of Life" was first published in English in 1939. In 1949, a review of Lakhovsky's work was published as "Waves That Heal" by Mark Clement. Lakhovsky's theory is that each cell in the body of an organism—be it a plant, an animal, or a human being—is in itself a little radio receiver and works on its own special little frequency. Each cell, in addition to being biological tissue, is also electricity. On that theory, he held that pathology was a not matter of biological concern or intervention, but one of electrical concern and intervention. The record of his treatment of degenerative disease, with what amounts to an early "energy-medicine" device, was remarkable and helped further the groundwork Tesla had begun 50 years earlier.





DR. ROBERT BECKER

A pioneering medical doctor in the 1960's, Dr. Becker is most famous for his book, *The Body Electric*, in which he gave an autobiographical account of his life experiences with bioelectro-magnetics. Not only did he establish that the Chinese meridians of the body are skin pathways of decreased electrical resistance, but he discovered a host of other bioelectric effects within the body as well; for example, the electro stimulating of limb-regeneration in mammals. He also worked on electrically stimulating bone growth with Dr. Andrew Bassett, who along with Dr. Arthur Pilla, developed a very effective PEMF generator to stimulate bone fracture healing, now approved by the FDA with an 80% success rate. Similar PEMF signals recently have been used effectively to prevent osteoporosis even in patients with an ovariectomy.

is most famous for his book, *The Body Electric*, in which he gave an autobiographical account of his life experiences with bioelectro-magnetics. Not only did he establish that the Chinese meridians of the body are skin pathways of decreased electrical resistance, but he discovered a host of other bioelectric effects within the body as well; for example, the electro stimulating of limb-regeneration in mammals. He also worked on electrically stimulating bone growth with Dr. Andrew Bassett, who along with Dr. Arthur Pilla, developed a very effective PEMF generator to stimulate bone fracture healing, now approved by the FDA with an 80% success rate. Similar PEMF signals recently have been used effectively to prevent osteoporosis even in patients with an ovariectomy.



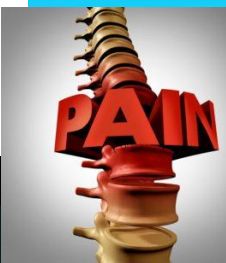


Thomas J. Goodwin, PhD, FAcadTMJ

Thomas J. Goodwin, PhD – NASA cellular physiologist (Retired), pioneer and authority in 3D biology, tissue engineering, bioelectromagnetic field effects, and synthesized tissue growth. Dr. Goodwin was the Manager of the Disease Modeling and Tissue Analogues Laboratory at the NASA Johnson Space Center and Lead Scientist for the Oxidative Stress and Damage research discipline for more than 15 years.

Known for 30 years of work in 3D tissues for study of human physiology and tumor biology, 3D models as microbial hosts for infectious disease, and research into effects of (PEMF) ultra-low frequency electromagnetic fields on human tissues. Dr. Goodwin is Honorary President and Chair of the Personalized Medicine panel of the European Society of Translational Medicine (EUSTM). He holds adjunct positions at the University of Texas Medical School, Galveston Texas, Dept. of Surgery, Division of Cardiothoracic Surgery, the University of Houston, Dept. of Health and Human Performance, and is an Adjunct Scientist at the Texas Biomedical Research Institute and the Southwest National Primate Research Center which is sponsored by the National Institutes of Health.

He has authored or co-authored over 58 peer review articles, four book chapters on three-dimensional biology and personalized spaceflight medicine, has been awarded 21 U.S. patents, on 3D biology and human physiology, and is the recipient of more than 70 NASA Scientific and Technical awards. Dr. Goodwin's research focuses on cell physiology and organ tissue bioengineering, development of ex vivo physiological 3D systems, and the three-dimensional biology of human and animal cells. Complex recapitulated tissues may serve as surrogates for studies of tumour physiology, viral, and bacterial infectivity, genomic responses to a myriad of cellular conditions including genomic modulation and regulation due to chemical, physical, and environmental stimuli such as may be seen on the Earth and in the microgravity environment and as a platform to study man-machine interfaces. Recent papers include the co-authorship of Personalized Medicine in Human Space Flight: Using Omics Based Analyses to Develop Individualized Countermeasures that Enhance Astronaut Safety and Performance, published in the journal Metabolomics in 2013, Three-Dimensional Normal Human Neural Progenitor Tissue-Like Assemblies: A Model of Persistent Varicella-Zoster Virus Infection", PLoS Pathogens 2013, and 3D Tissue-like Assemblies: A Novel Approach to Investigate Virus-Cell Interactions, Methods 2015. See his Research Gate page for additional information.





NASA's Astronaut Problem



IT'S ONE THING TO BE WITHOUT THE EARTH'S 'FIELD'

It was first discovered that we cannot live without the Earth's Low Pulsating Magnetic Field by Yuri Gagarin, the Russian Astronaut who circumnavigated the globe for 100 minutes in 1961.

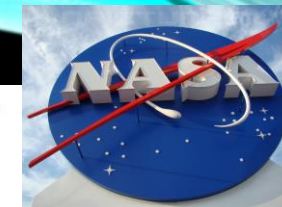
He returned with severe Osteoporosis and clinically diagnosed Depression that lasted the rest of his days.

***PEMFs have been reproduced in all space suits and Crafts since then.**

IT'S QUITE ANOTHER TO BE SUBJECTED to THOUSANDS of TIMES EARTH'S LOW FREQUENCY from MAN-MADE INTENSELY HIGH WIRELESS TRANSMISSIONS millions of hertz that our bodies and cells simply cannot handle.



**CHRONIC
PAIN**



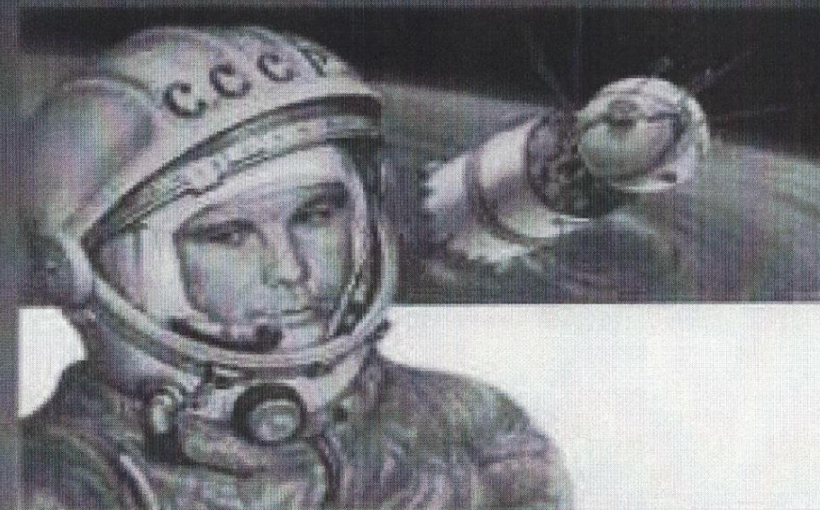
“1 Hour & 48 Minutes”

In 1:48 Yuri Gagarin
Returned From His Launch...

- On a Stretcher...
- w/ Bone Loss
- Depression
- Impaired Metabolism
- Severe Weakness, etc...

Since that Historic Launch,
All Space Suits and Space
Stations Equipped with
Earth Frequency Generators

We Need Earth Based Pulsed
Magnetic Frequencies As
Much as Food and Water!



**CHRONIC
PAIN**



Centurion[®]
Tesla Technology for Human Health



NASA

PULSED ELECTRO MAGNETIC
FREQUENCY
KEEPING ASTRONAUTS
IN ULTIMATE HEALTH

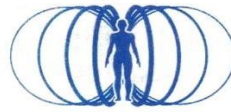
ASTRONAUT
HEALTH | PEMF | EVERY CELL
SUPERCHARGED



**FDA
APPROVED**



**CHRONIC
PAIN**



Centurion[®]
Tesla Technology for Human Health

PEMF in NASA's Space Stations



**FDA
APPROVED**



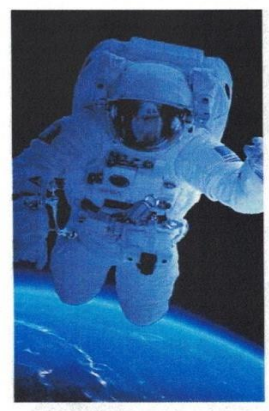
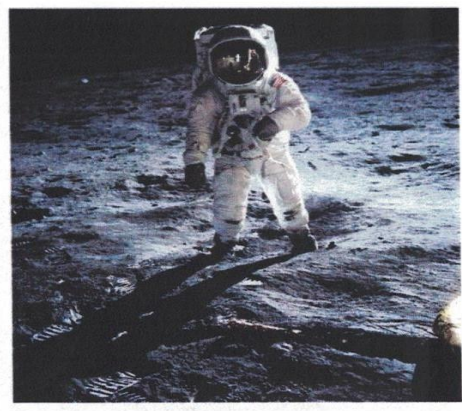
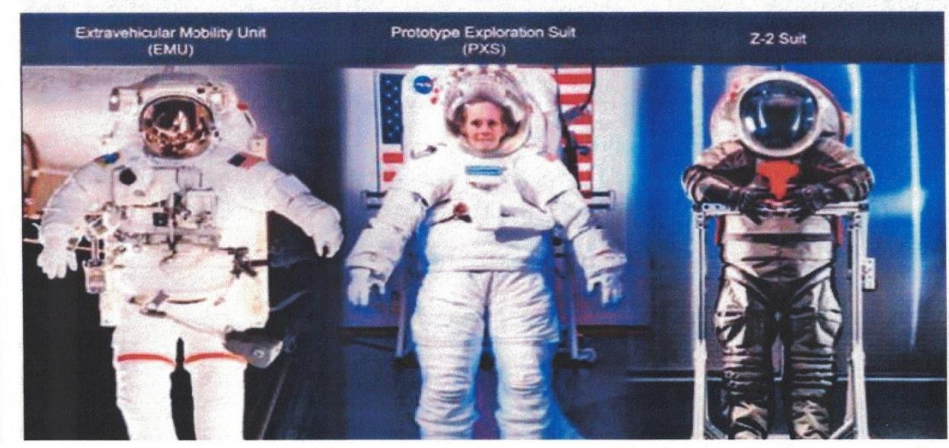
CHRONIC PAIN



Centurion
Tesla Technology for Human Health



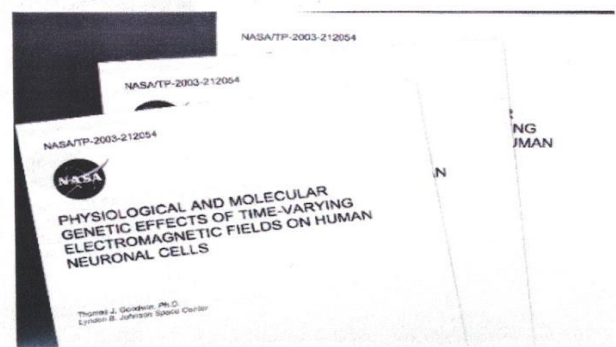
PEMF Technology Designed into NASA's Astronauts Space Suits



CHRONIC PAIN



Centurion[®]
Tesla Technology for Human Health

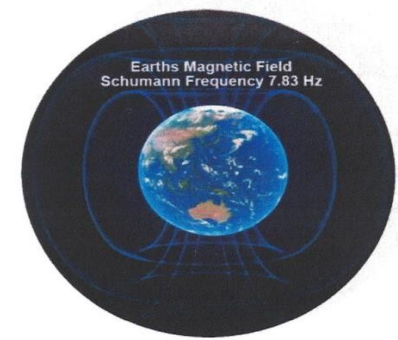


PEMF Therapy Works for You

Blood Cells BEFORE & AFTER 8 Minutes of PEMF Therapy

"Human cells that are exposed for 8 minutes to low pulsating frequencies grow faster and stronger."

- Based on a 4-year NASA study on the effects of PEMF



Primordial Cells
Earth's 13:13 hz awakens Primordial Cell Potential

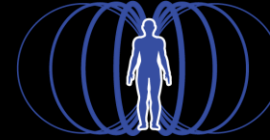
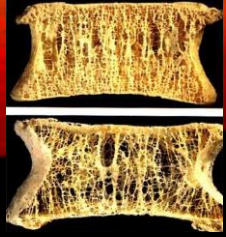
Octave	Hz Frequency
5	210
4	105
3	52.52
2	26.26
1	13.13



www.Universal4eTools.com



How PEMF Therapy Works



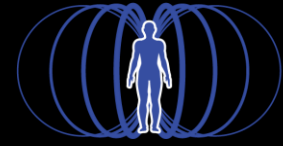
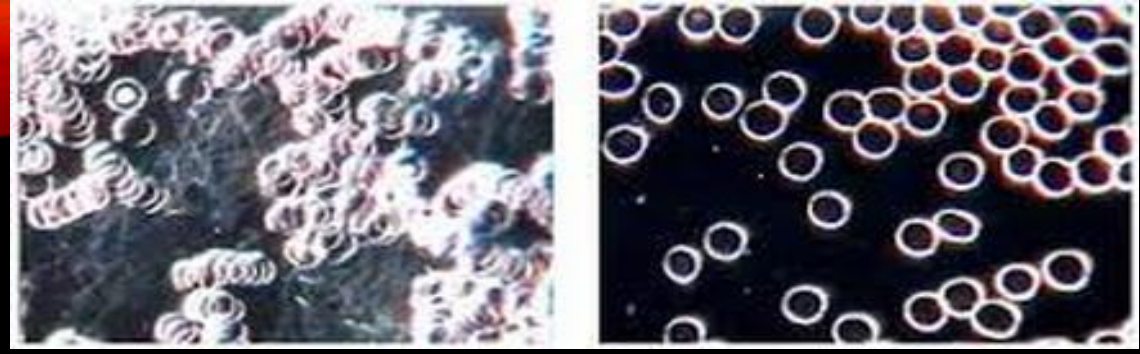
Centurion
Tesla Technology for Human Health

Pulsed Electromagnetic Field Therapy is commonly referred to as (PEMFT), the technology was developed by Dr B Dennis, Ph.D. during the early 90s whilst he was under contract too NASA researching how it might be possible to influence and increase the bone density of Astronauts that have spent long periods of time in space. Zero gravity reduces the density of bone and muscle material which is a major health issue for astronauts. The technology that was subsequently developed is commonly referred to as (PEMFT) and is now a mature, and widely used clinical treatment in the space and European medical sector.

Over many decades PEMF therapy has been proven to be highly effective in normalising body systems and promoting conditions within the body required for sustained health. PEMF therapy promotes the fusion of damaged bone material, whilst also increasing bone density by up to 6% in months, with a massive 40% increase in bone density having been recorded by NASA during their clinical evaluations of exposing bone material to VLF (Very low frequency) magnetic pulses. PEMF therapy has been proven to be a highly effective for treating **Osteoporosis, Osteoarthritis**. (research, NICE studies). The photo above shows two segments of bone material. The upper image is of a bone sample that was subjected to PEMF therapy, 30 mins twice a day. Its possible to clearly see the increase in increase in density that was achieved.



Characteristics of Low Power Magnetic Therapy Frequencies



Centurion
Tesla Technology for Human Health

Low frequency - 1 to 10 Hz

The healing effects of VLF pulsed magnetic therapy are of analgesic, pain relief and myo-relaxing in nature. Medium frequency - 10 to 15 Hz MLF frequencies are anti-inflammatory, and suitable for treating chronic and degenerative diseases and help with circulation and vasodilatation of the body. Treatments result in enhanced blood and lymph circulation and the suppression of tissue inflammation and the suppression of swellings.

Medium frequency - 10 to 15 Hz

MLF frequencies are anti-inflammatory, and suitable for treating chronic and degenerative diseases and help with circulation and vasodilatation of the body. Treatments result in enhanced blood and lymph circulation and the suppression of tissue inflammation and the suppression of swellings.

Higher frequency: up to 25 Hz

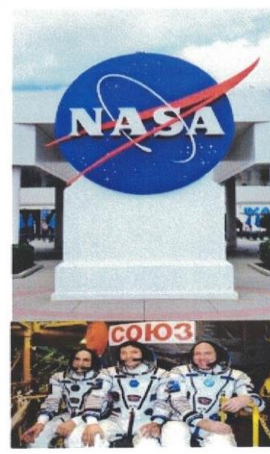
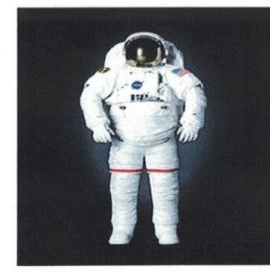
High level frequencies support bone healing and increased density, help improve the healing of post-injury states and work well with acute disease and where there is a need to detoxify the body.

Frequency above 25 Hz (26 to 81 Hz)

Frequencies higher than 25 Hz (intended for special applications) are used where there is a need to assist and speed the healing of tissues after burns, regular treatments will enhance the healing of bone fractures. Higher frequencies are used for more intensive support of the healing process and to promote the regeneration and detoxification of tissues. A specialist PEMF practitioner should be consulted for the application of programmes working with higher frequencies.



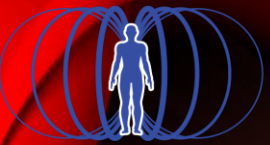
**CHRONIC
PAIN**



**(PEMF) Machines
Pulsed Electr-Magnetic Field or (PEMF)
Were First Developed And Used For:
NASA Astronauts - Russian Cosmonauts
International Space Station
NASA Space Shuttles
Russian Space Station**



**CHRONIC
PAIN**



Centurion[®]
Tesla Technology for Human Health



**FDA
APPROVED**



**CHRONIC
PAIN**



Centurion Systems

THE NATURAL HEALING POWER OF
PULSED ELECTRO MAGNETIC FIELDS (PEMF)


Wayne Kraushar
Michel Gareau

Centurion systems © The Therapy specialists™



**CHRONIC
PAIN**

What is PEMF



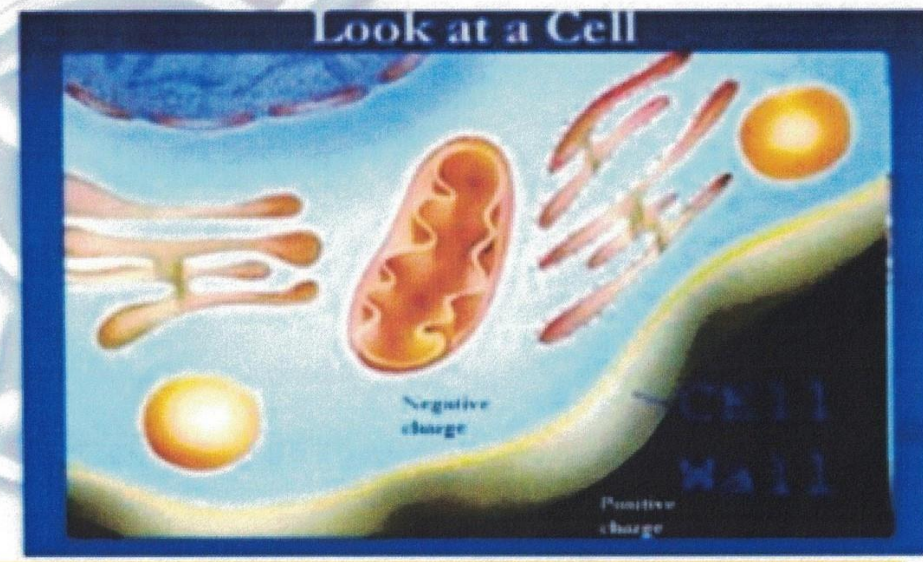
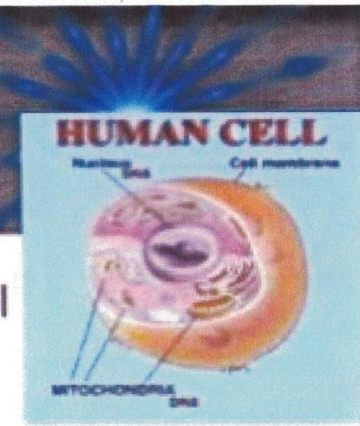
- PEMF produces and brings a healthy energy charge into the interior of the cell behind the cell membrane **that raises cellular energy (potential) so the cell can heal itself faster.** While many technologies can affect the interstitial fluids, pulsed electromagnetic fields can influence and charge the interior parts of the cell including the nucleuse and the mitochondria.

Centurion systems © The Therapy specialists™



What does PEMF do?

- Pulses create a brief intense voltage around each cell
- Cells and internal cell structures like the mitochondria grabs onto some of that energy and store it
- This stored energy enables them to replenish their working reserve
- Which in turns allows them to do more of their healing job faster

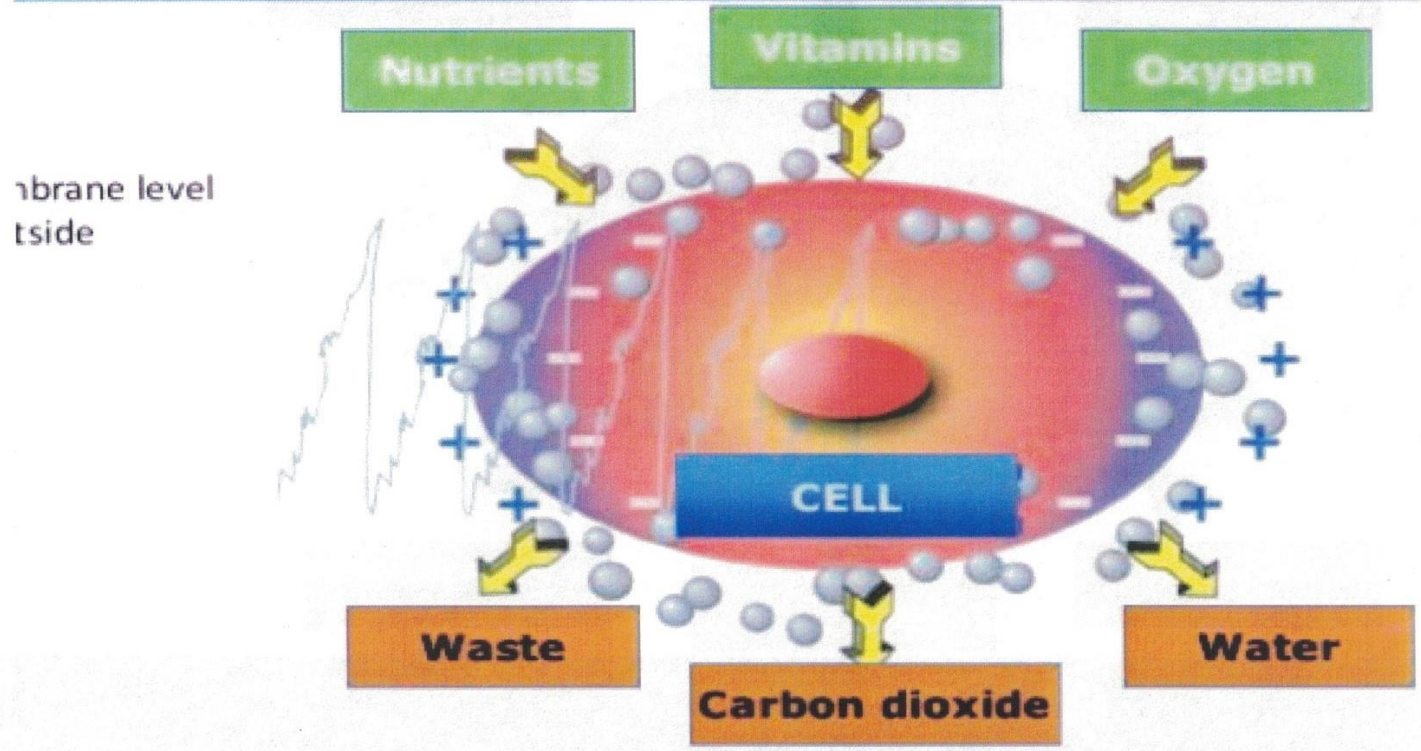


Centurion systems © The Therapy specialists™



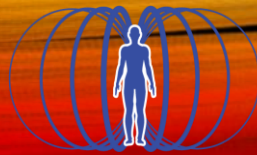
CHRONIC PAIN

Metabolism and the effect of PEMF



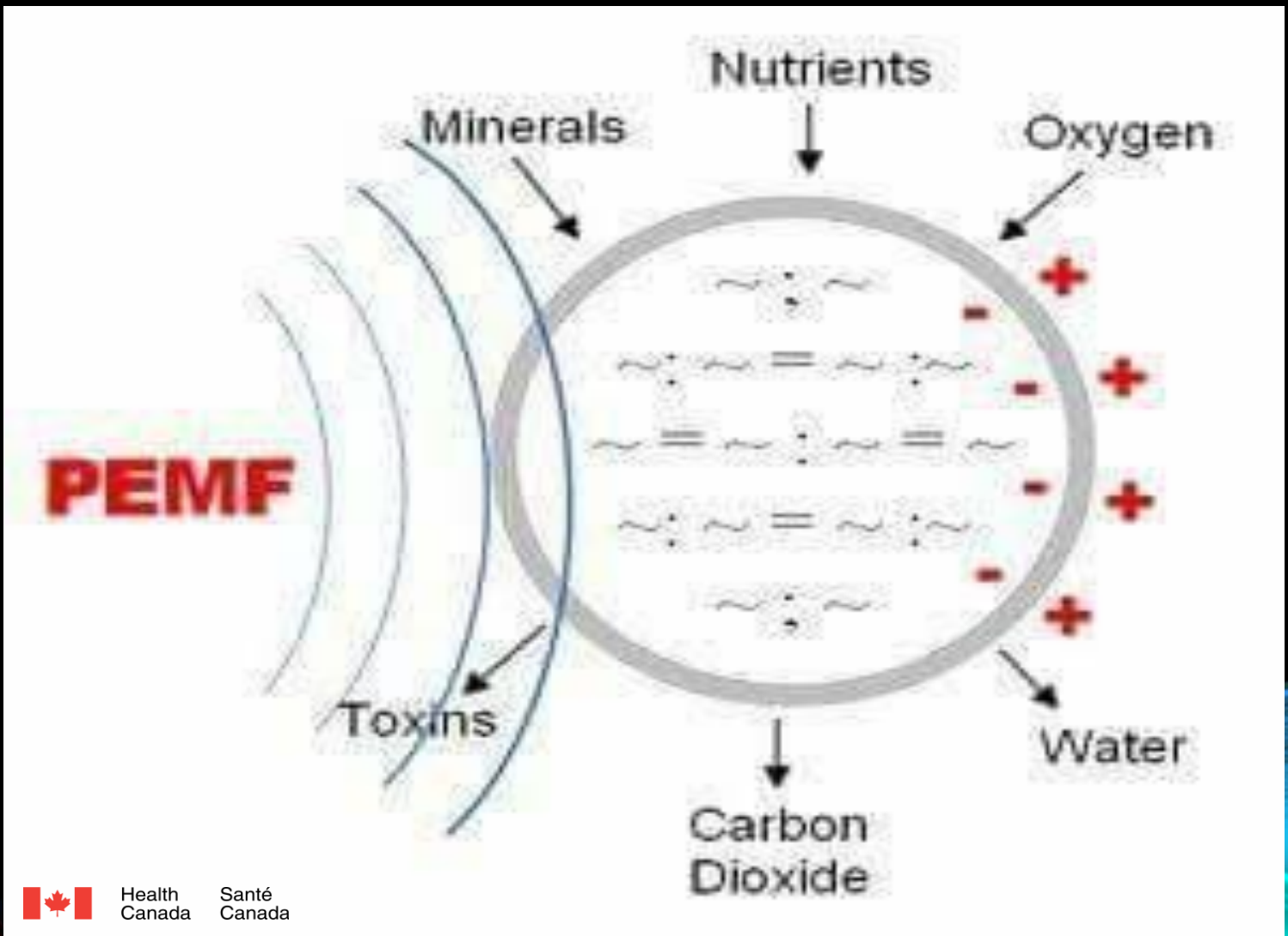
Centurion systems © The Therapy specialists™






Centurion
Tesla Technology for Human Health

**CHRONIC
PAIN**



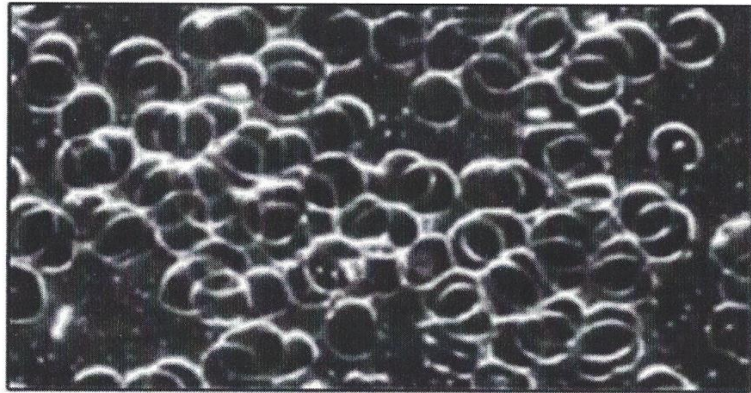
 Health Canada Santé Canada



CHRONIC PAIN

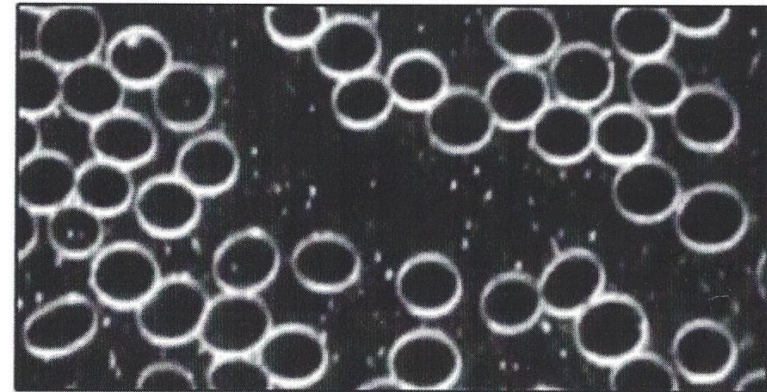


Centurion Systems PEMF Therapy after 8 Minutes on the EZY System



BEFORE PEMF

Blood Cells of a Sick Person
BEFORE PEMF Therapy
Poor Circulation Due to Clumping
Joints and Muscles are Stiff and Painful



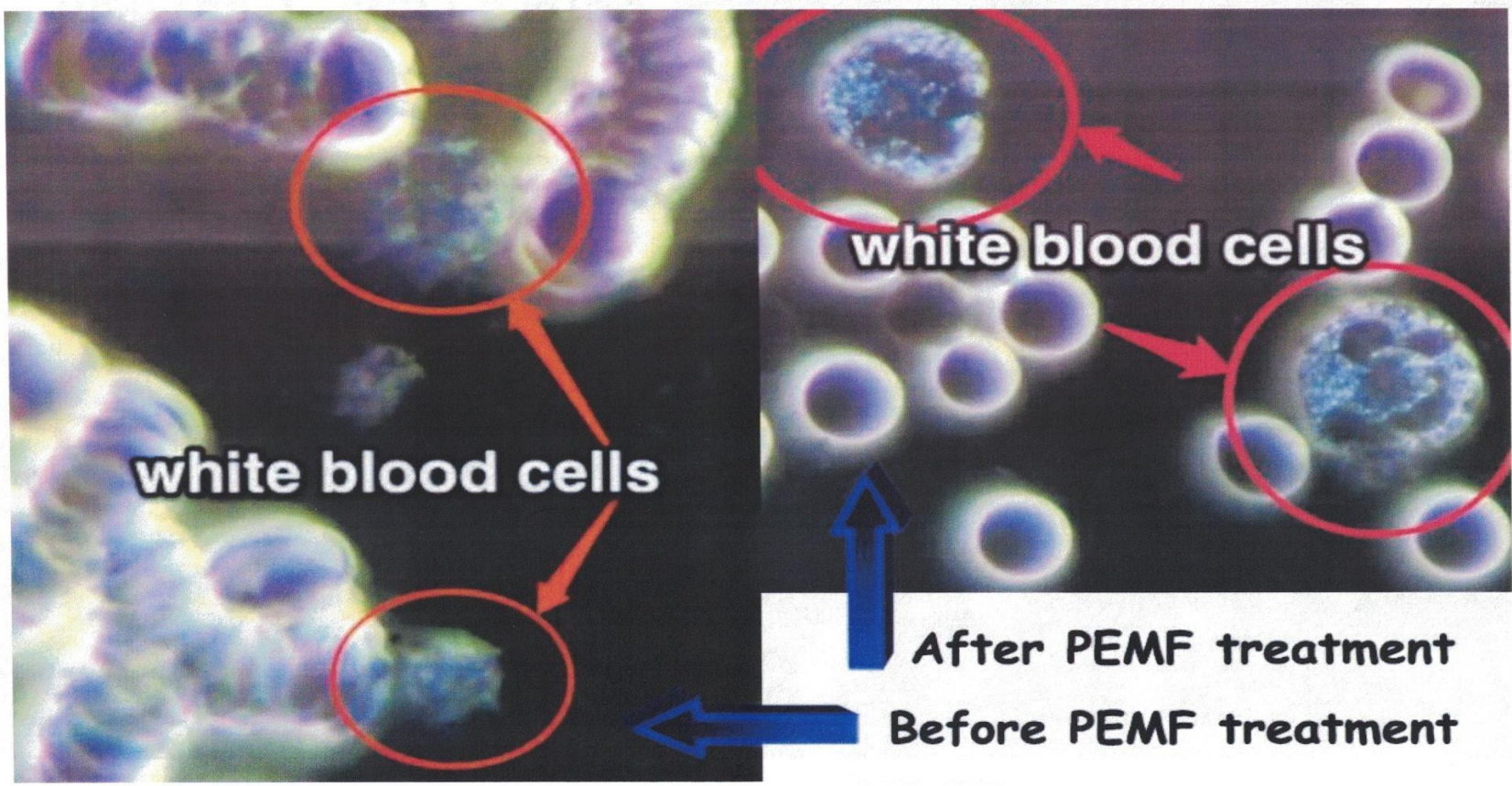
AFTER 8 Mins. on PEMF

AFTER 8 Minutes Of PEMF Therapy
Blood Cells Get Strong and Normalize
Circulation (Oxygen Delivery) Improves
Pain is Relieved and Flexibility Returns

Blood (Rouleaux Effect - singular is rouleau) are stacks or aggregations of red blood cells (RBCs) that are a non-specific indicator of the presence of disease. Conditions which cause rouleaux formation include infections, multiple myeloma, Waldenstrom's macroglobulinemia, inflammatory and connective tissue disorders, and cancers. It also occurs in diabetes mellitus and is one of the causative factors for microvascular occlusion in diabetic retinopathy.)



CHRONIC PAIN



**CHRONIC
PAIN**

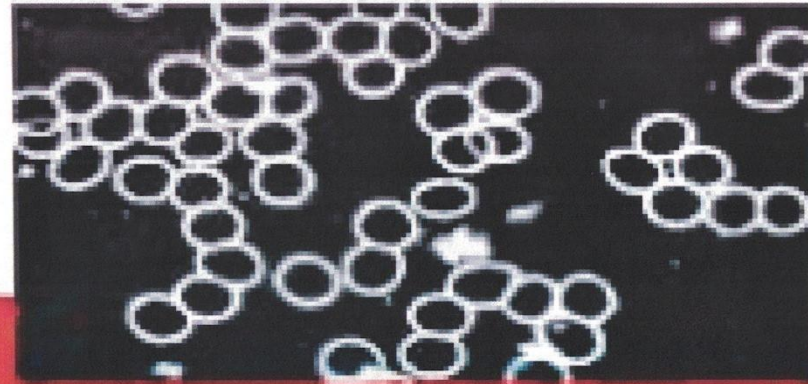


PEMF Therapy after 8 Minutes on the Centurion EZY System

The Proof is in the Blood



Cells BEFORE PEMF Treatment



Cells AFTER PEMF Treatment



Health
Canada

Santé
Canada



**CHRONIC
PAIN**

CENTURION SYSTEMS PEMF THERAPY

INTRODUCTION

Pulsed Electromagnetic Field Therapy (PEMF) is a non-invasive, painless treatment for various soft tissue injuries, bone related conditions and chronic pain. The application of pulsed electromagnetic fields has, through research findings, been shown to help the body restore normal cellular function at an accelerated rate- thus aiding the healing of wounds, regenerating tissues and reducing swelling faster.

THE BIOELECTRIC POTENTIAL OF THE HUMAN BODY

The body is composed of trillions of cells. Each one of these cells has a designated purpose; whether it be cells in the eye for sight, or cells in the stomach that produce acid to digest food- all of these processes require power. In our bodies, that power is electrical in nature. In fact, every single cell of our body possesses, and requires, electrical voltage. Just like any battery, after long use, these cells need to be recharged in order to continue to provide power. In the very same way that we recharge our cell phones, we must also recharge our cells- in order to maintain optimal health and function.

HOW DOES IT WORK?



Cell Membrane
Before Pulse



Cell Membrane
During Pulse



Cell Membrane
After Pulse

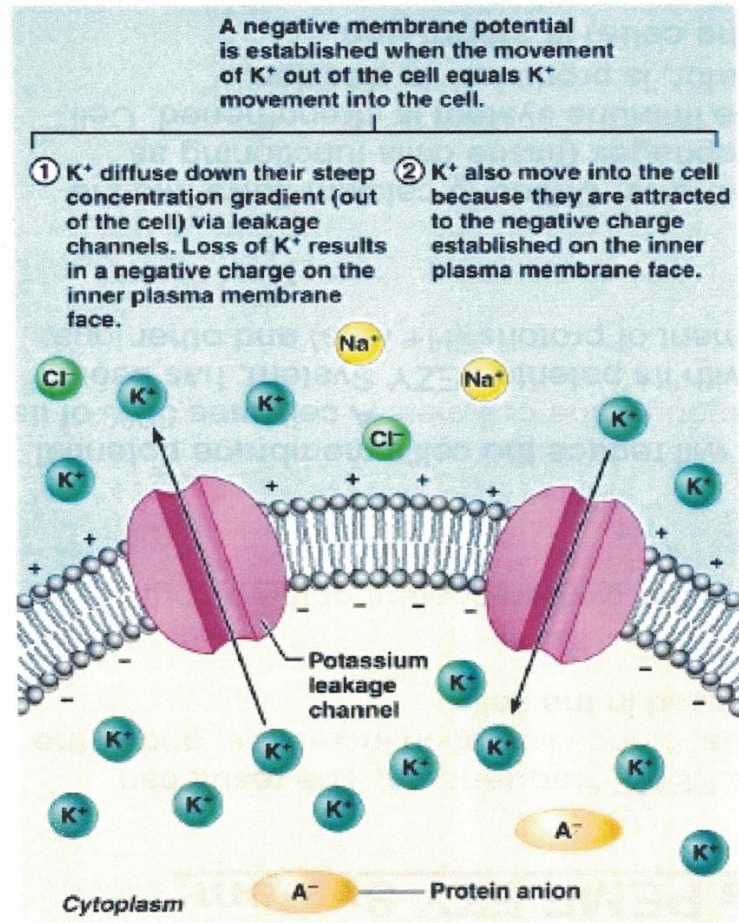
The human body is permeable to electromagnetic fields- this means that these fields can penetrate, or pass through our bodies without resistance. Rapid construction and collapse of a frequency tuned, pulsed, electromagnetic field creates a property in the cell membrane known as "electroporation". Electroporation is the rapid opening and



Health Canada Santé
Canada Canada



Resting Membrane Potential



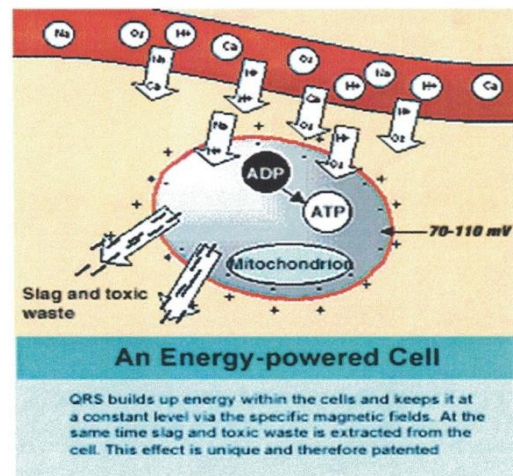
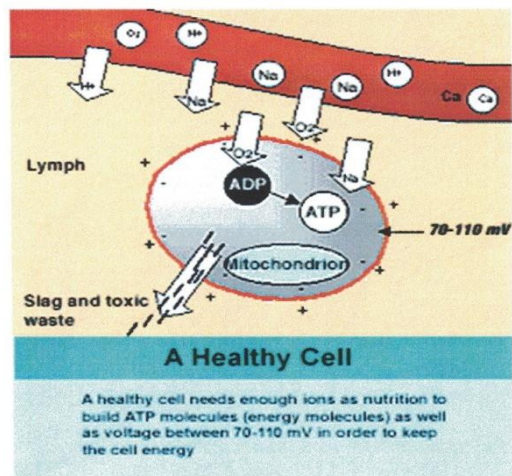
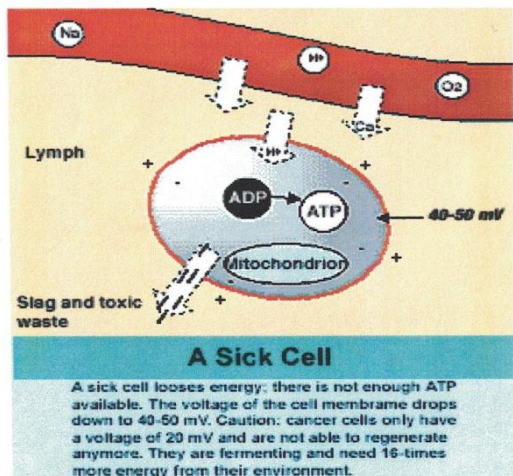
- Selective permeability allows for the generation of a membrane potential (voltage)
- At rest, the cell membrane has a (-) membrane potential
- Important to excitable tissue like nervous tissue

Centurion EZY System PEMF Therapy

The Centurion EZY System uses PEMF Technology, imitating those produced naturally in the human body and in the earth's environment. Pulsed electromagnetic fields produce resonance and thus influence cell membranes and the body to enhance blood flow circulation and internal stimulation of the Cells resting Potential.

Why are pulsating electromagnetic fields best for personal health maintenance?

A low pulsating electromagnetic field produces one main effect: stimulating cells. This effect causes a chain of processes that leads to improvement of health without side effects. A cell produces its own energy, called ATP (Adenosine Triphosphate). This energy is necessary for movement of the body, building up and breaking down molecules, and transporting substances across cell membranes. To produce energy, a cell needs oxygen and about 90 other substances, including enzymes, glucose, and nutrients. In addition to energy, cells also produce carbon dioxide, water, and waste products. To be able to execute and control all these processes properly, good cell metabolism is required. Therefore, the cell needs a membrane potential of about 70 - 90 mV (millivolt). Whenever this electrical cell membrane potential drops, active cell metabolism is impaired. Low performance levels and chronic disease are the results. Ultimately, every illness is the consequence of impaired cell metabolism.

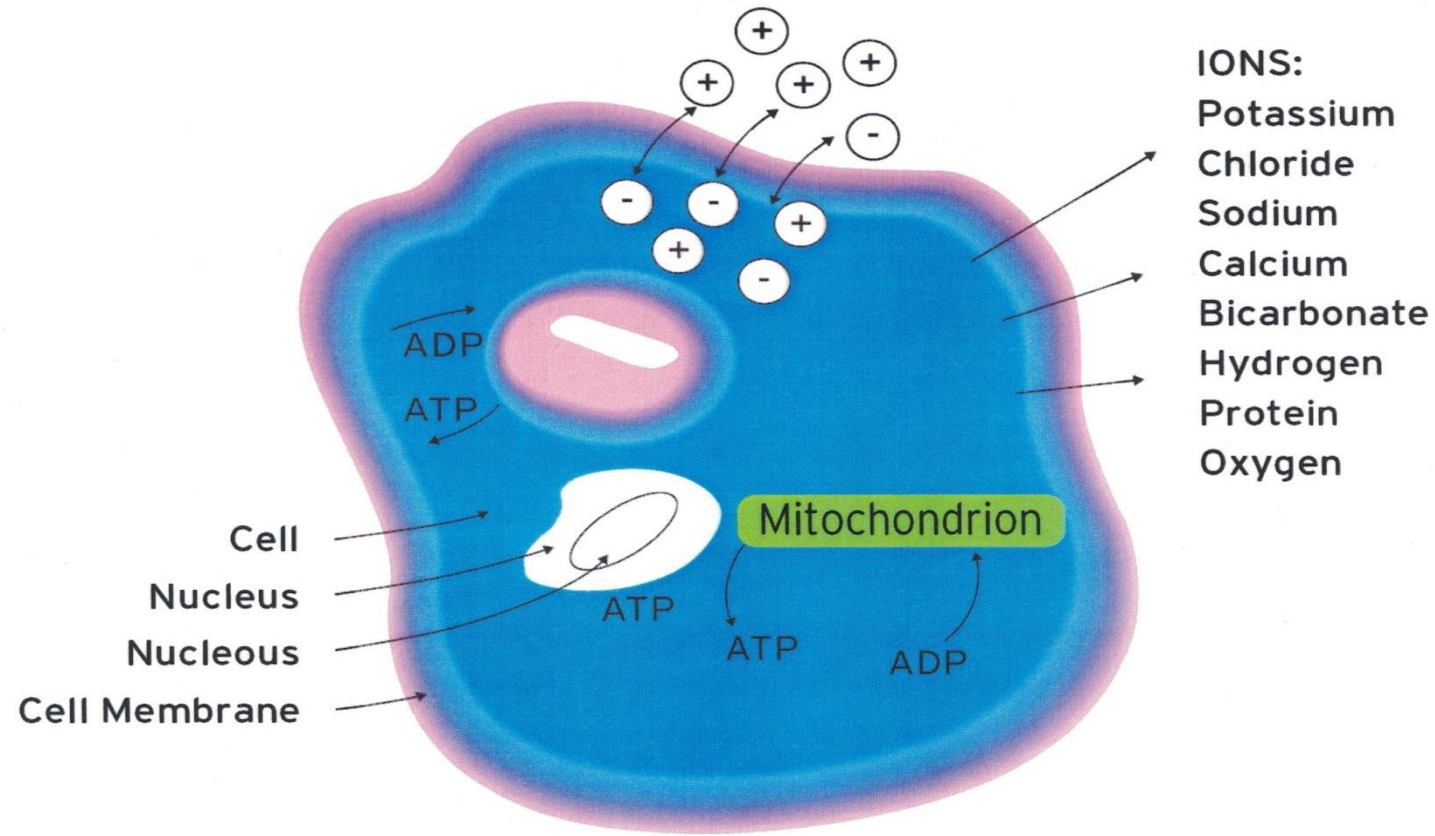


What effect does a PEMF have on disease processes?

The Centurion EZY System, uses Pulsed Electromagnetic Field energy, to create a positive influence on cellular dysfunction by displacing ions, pulsating electromagnetic fields (PEMF) can lead to normalization of the Cells Membrane Potential.



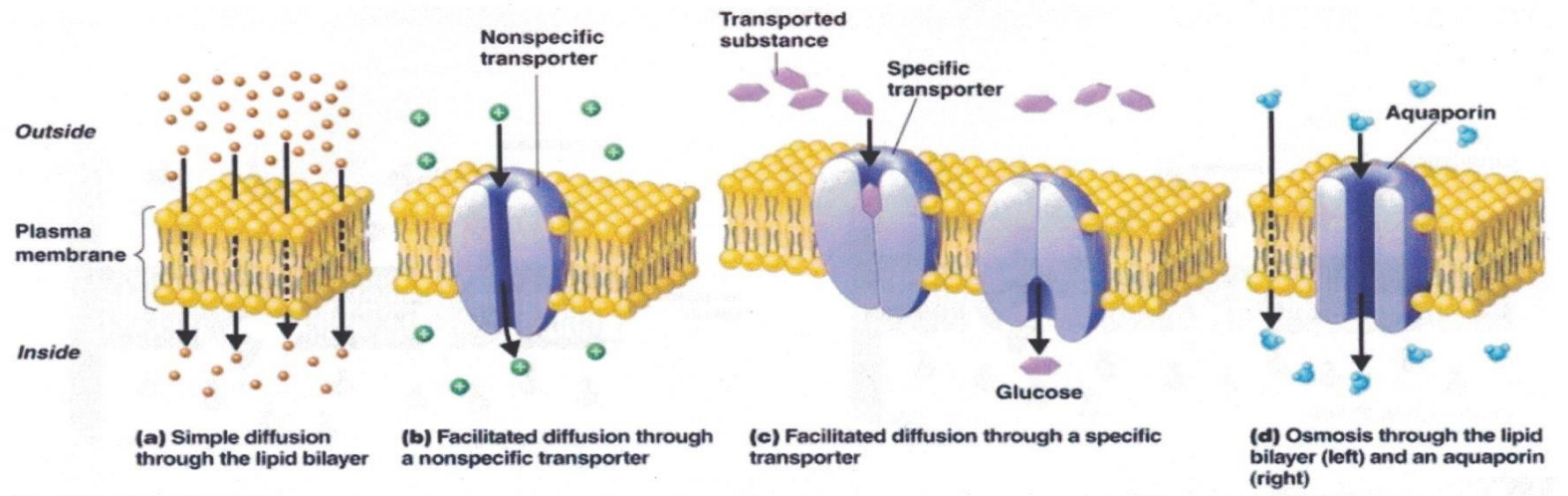
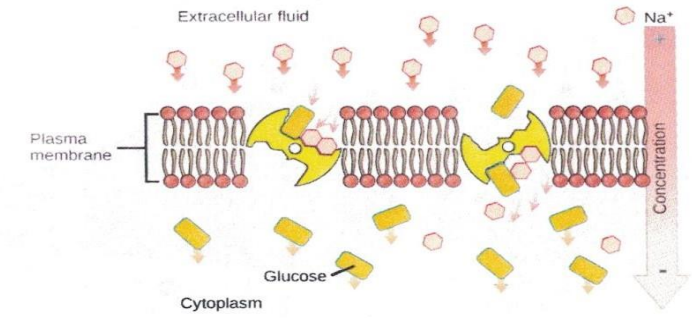
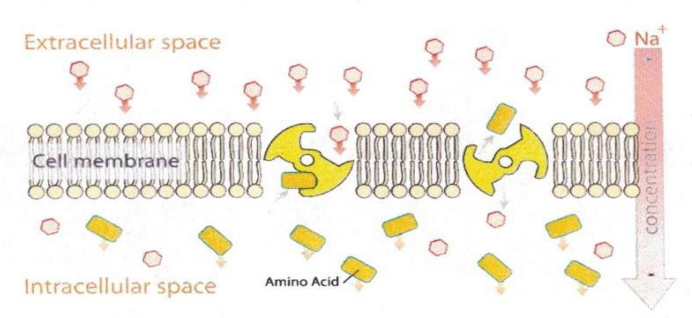
PEMF stimulates cell ionisation processes (ionic migration)
When cell function is enhanced, essential chemicals and proteins are transported through the cell walls.



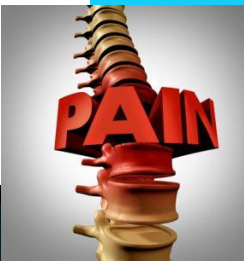
The Cell Ionisation process is further enhanced by the presence of essential fatty acids, amino acids, enzymes and oxygen in the bloodstream.

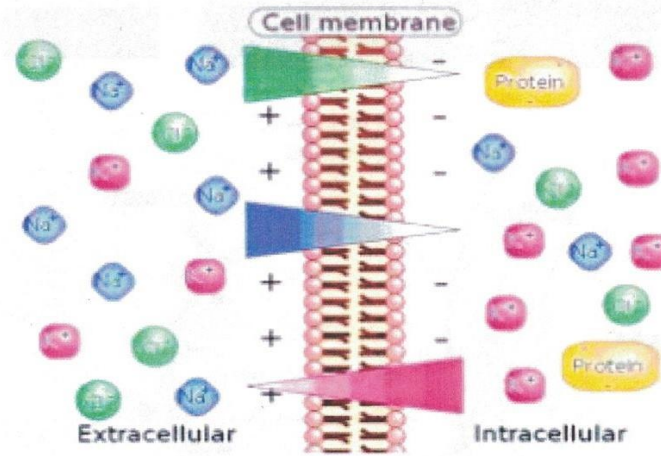
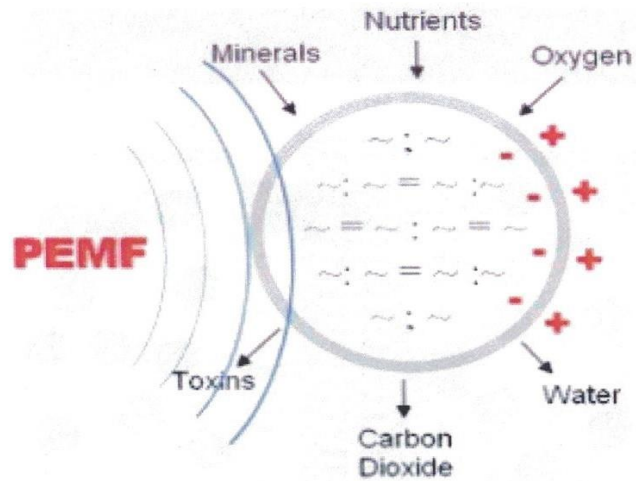


CHRONIC PAIN



Copyright © 2010 Pearson Education, Inc.





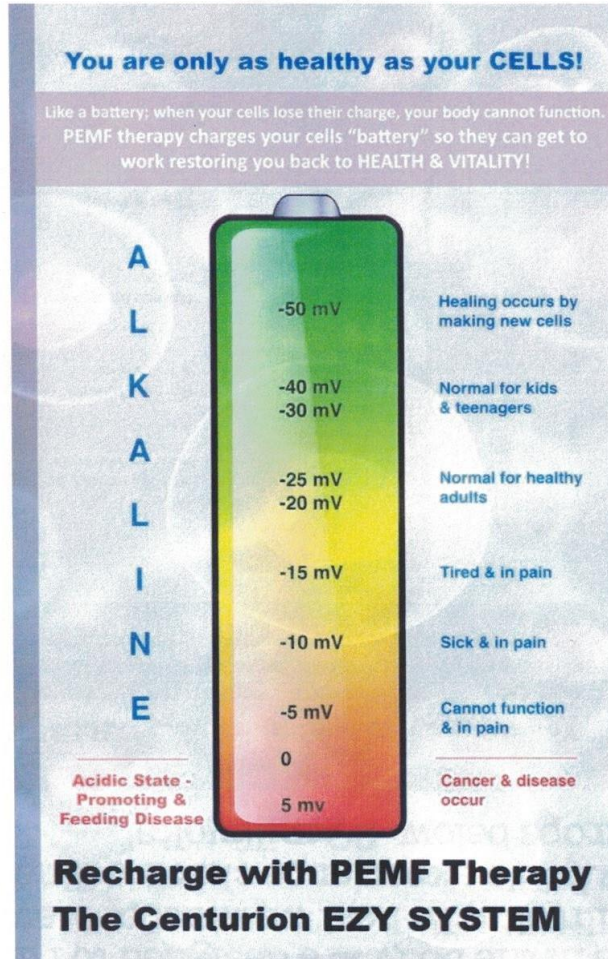
2Hz
Isochronic Tones
Nerve Regeneration

Frequency	Effects
2 Hz	Nerve Regeneration
7 Hz	Bone Growth
10 Hz	Ligament Healing
15, 20 Hz	Stimulation Capillary Formation



CHRONIC PAIN

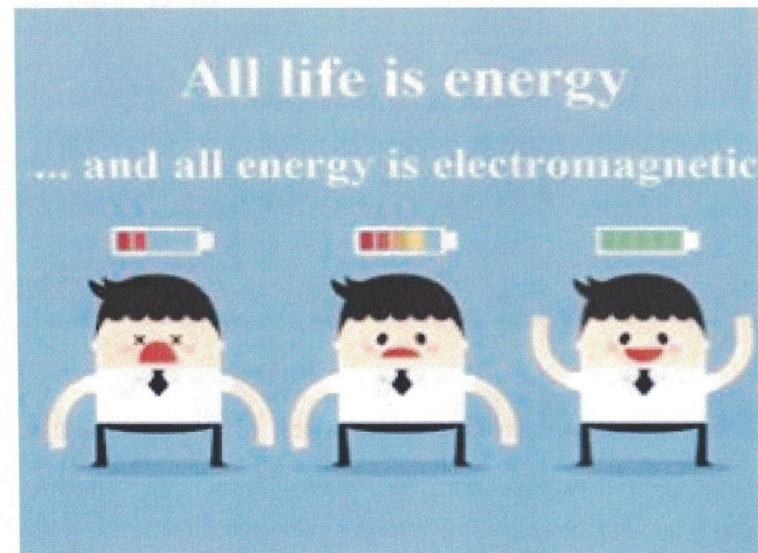
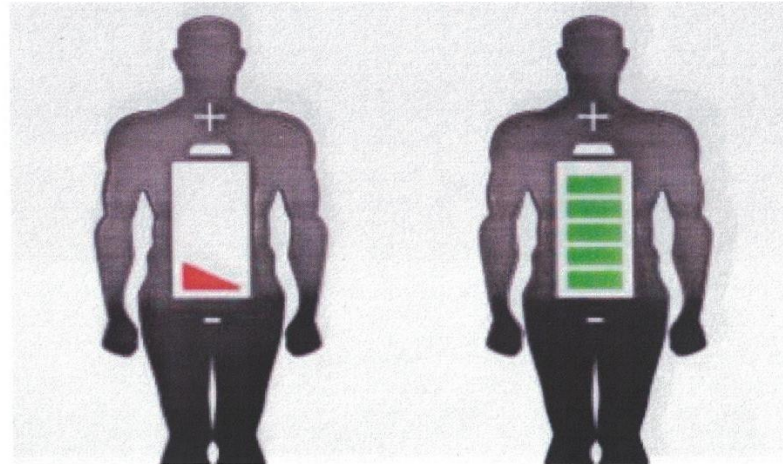
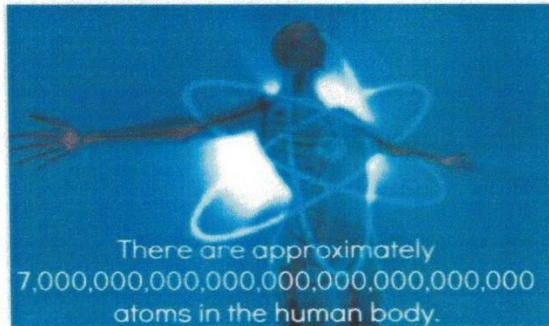
“The cells in the body are designed to run at -20 to -25 millivolts. To heal we must achieve -50 millivolts.” “We experience chronic illness when voltage drops below -20 millivolts”.



Health Canada Santé Canada



CHRONIC PAIN



- The cells in the body require electricity.
- When the cells drop their electrical charge to a certain level, they become sick.
- The first sign of illness is usually pain.
- Chronic Disease & Pain is always defined by low electrical charge.
- The body can heal almost anything with proper nutrients and electrical charge.

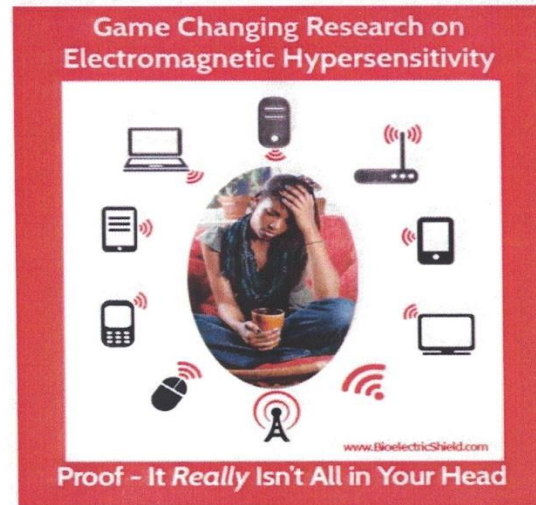


**CHRONIC
PAIN**



Centurion[®]
Tesla Technology for Human Health

Relief from the e-Smog



Electromagnetic pollution is equated with stress, which burdens the body and directly affects the psyche. Excessive stress disrupts the energy balance of an organ, gland or subsystem. The immune system is constantly under pressure and it becomes weaker.

Protect yourself against the following chronic disorders:

- **Headaches, migraines**
- **chronic fatigue**
- **insomnia**
- **nervousness**
- **concentration deficiency**
- **Allergies of all kinds**
- **Disruption of cell regeneration**



Health
Canada

Santé
Canada



CHRONIC PAIN

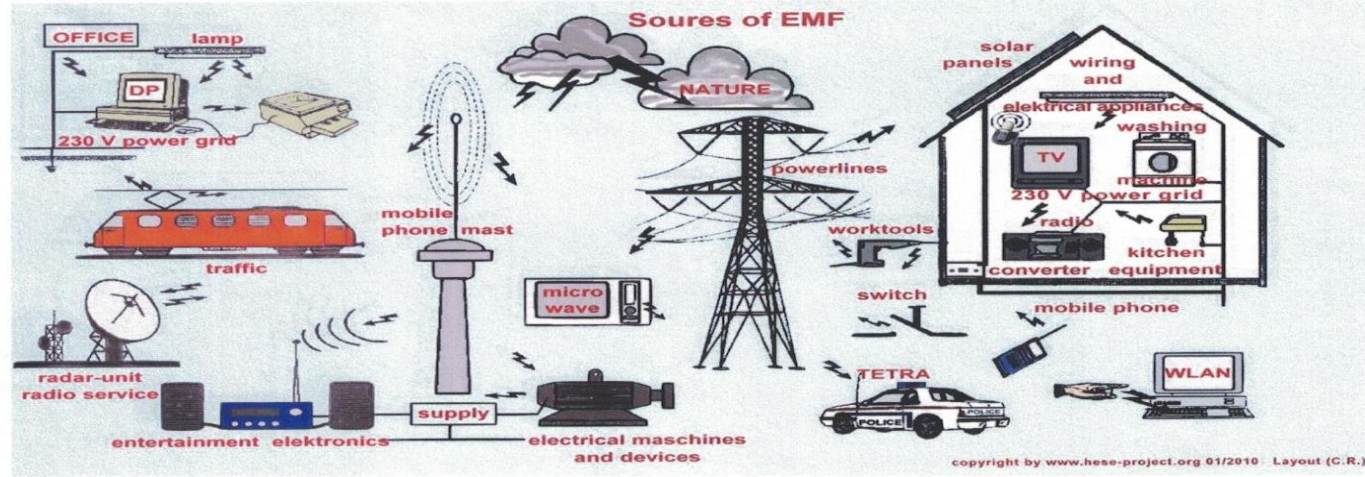
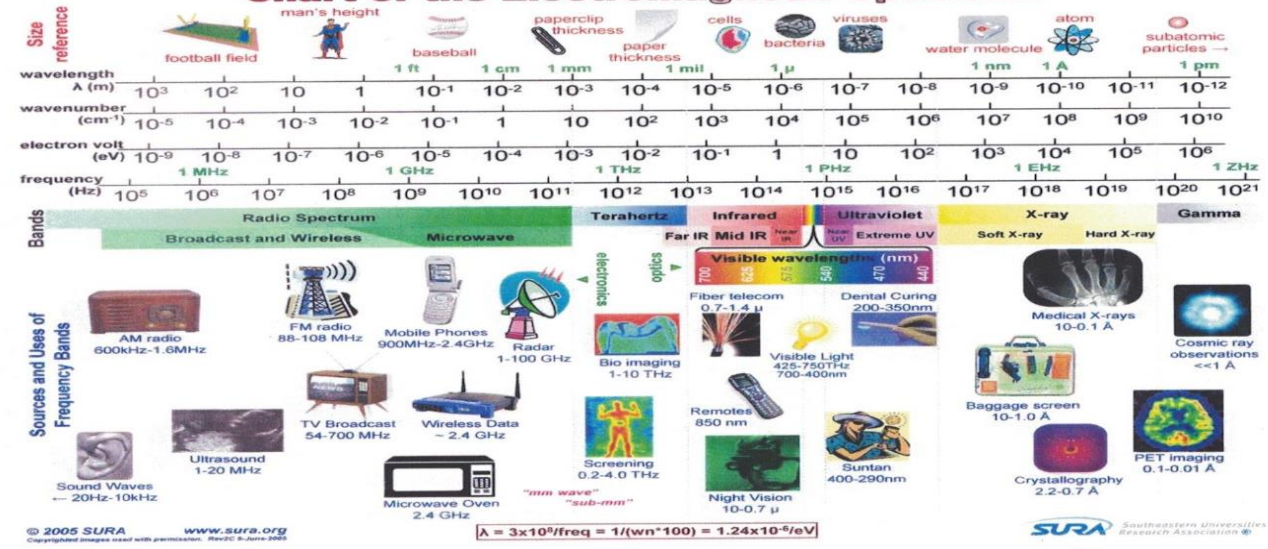


Chart of the Electromagnetic Spectrum



**CHRONIC
PAIN**



All life is energy
... and all energy is electromagnetic.

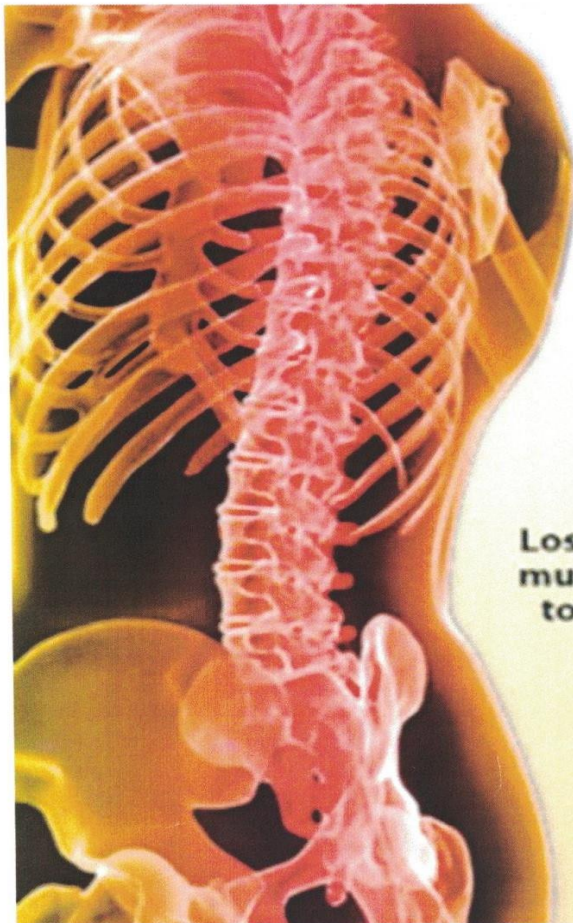


- The cells in the body require electricity.
- When the cells drop their electrical charge to a certain level, they become sick.
- The first sign of illness is usually pain.
- Chronic Disease & Pain is always defined by low electrical charge.
- The body can heal almost anything with proper nutrients and electrical charge.

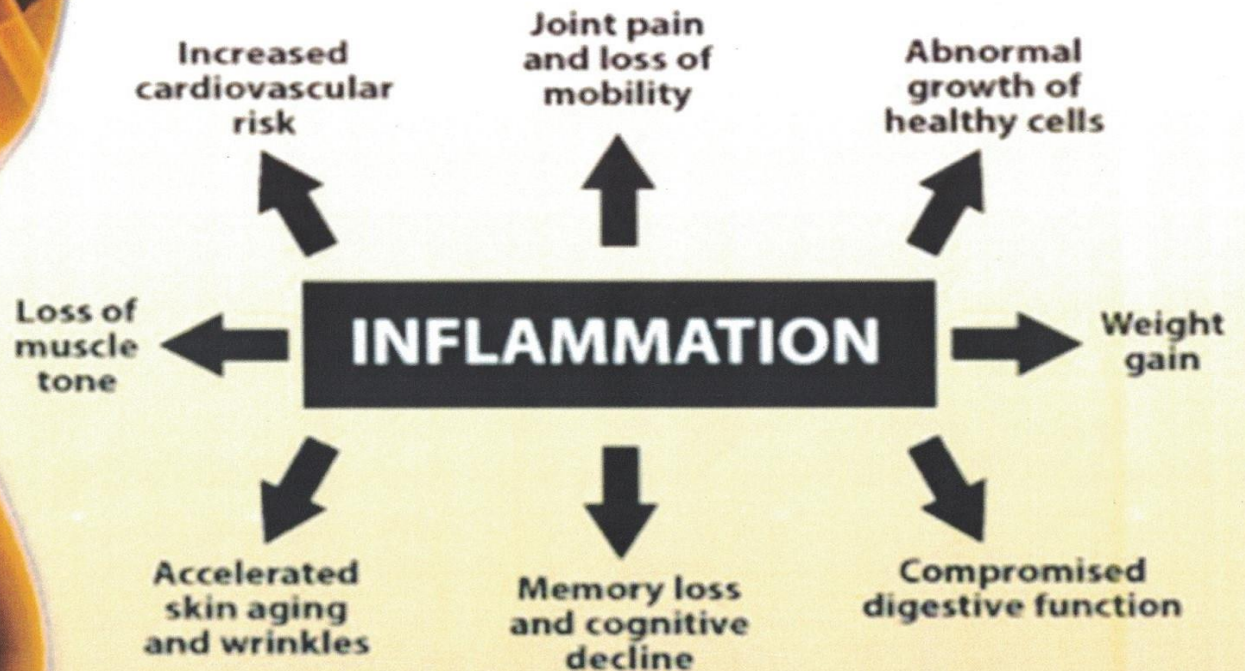
Ref: Dr. Jerry Tennant, MD and author of the book Healing is Voltage



CHRONIC PAIN



8 Ways Chronic Inflammation Can Damage Your Body

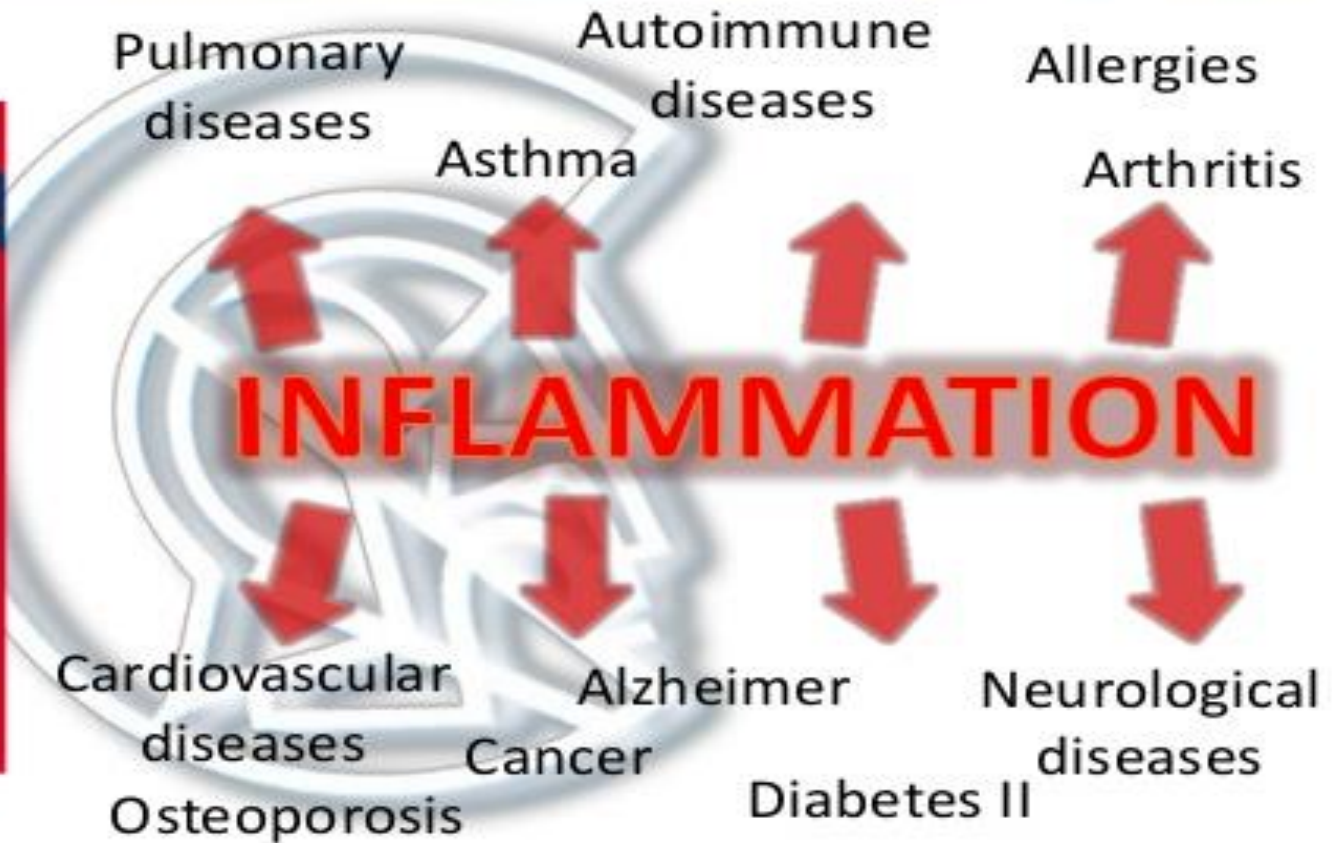


Health
Canada

Santé
Canada



Inflammation and Health



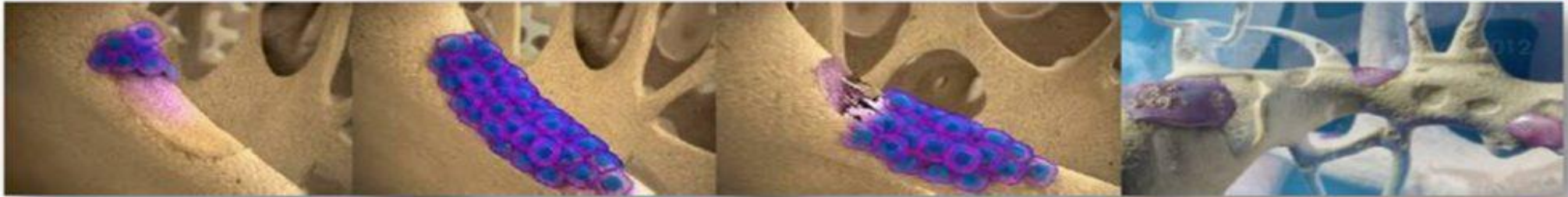
 Health Canada Santé Canada



Bone Resorption

Bone resorption is the process by which osteoclasts **break down bone** and release the minerals, resulting in a transfer of calcium from bone fluid to the blood.¹

High levels of **calcium, magnesium, phosphate and products of collagen** will be released into the extracellular fluid as the osteoclasts tunnel into the mineralized bone



During childhood, bone formation exceeds resorption, but **as the aging process occurs, resorption exceeds formation.**

PEMF Slows Bone Resorption in a Pre-Clinical Disuse Model

- Another study utilizing a fibular fracture model (rat osteotomy) reported the group treated with PEMF experienced a **75% preservation of bone volume** at the distal fibular end in comparison to controls.

**CHRONIC
PAIN**

Chronic Inflammation and Pain Attacks the Entire Body





Frequencies on Cells and Bone Structure

Further Evidence and Research in the 0-30 Hz Range

Notice Many conditions ABOVE 30 Hz are also listed below 30 Hz (i.e. Osteogenesis, DNA Synthesis)

Still all of these are considered Extremely Low Frequency (ELFs)

FREQUENCY SENSITIVITIES OF VARIOUS TISSUES TAKEN FROM THE SCIENTIFIC LITERATURE	
1Hz	Melatonin secretion (Lerchl et al., 1998)
2Hz	Nerve regeneration, neurite outgrowth from cultured ganglia (Sisken and Walker, 1995)
5Hz	Osteogenesis (Matsunaga et al., 1996)
6.4Hz	Cartilage (Sakai et al., 1991)
7Hz	Bone growth (Sisken and Walker, 1995)
10Hz	Ligament healing (Lin et al., 1992; Sisken and Walker, 1995)
10Hz	Cell growth (Miyagi et al., 2000)
10Hz	Osteogenesis (Matsunaga et al., 1996)
10Hz	Collagen production (Lin et al., 1993)
10Hz	DNA synthesis (Takahashi et al., 1996)
15Hz	Decreased skin necrosis, stimulation of angiogenesis and fibroblast proliferation Sisken and Walker, 1995)
15Hz	Osteoporosis (Takayama et al., 1990)
20Hz	Decreased skin necrosis, stimulation of angiogenesis and fibroblast proliferation Sisken and Walker, 1995)
20Hz	Osteogenesis (Matsunaga et al., 1996)
25Hz	Synergistic effect with nerve growth factor (Sisken and Walker, 1995)
40/116	Inflammation (Reilly et al., n.d.)
40/355	Inflammation (Reilly et al., n.d.)
50Hz	Synergistic effect with nerve growth factor (Sisken and Walker, 1995)
50Hz	Osteogenesis (Matsunaga et al., 1996)
50Hz	Effects on mitosis and chromosomal aberrations in lymphocytes (Khalil and Qassem, 1991)

Evidence that our cells and Tissues need 0-30Hz PEMF

Frequency	Effects
2 Hz	Nerve Regeneration
7 Hz	Bone Growth
10 Hz	Ligament Healing
15, 20 Hz	Stimulation Capillary Formation

At the level of tissues, the same 0-30 Hz frequency range has been shown to have the most positive benefits on the human body. The Table to the left lists frequencies in the 0-30 Hz that biomedical researchers are finding that are effective for jump starting healing in a variety of soft and hard tissues.

In 1995, Siskin & Walker noted that an ELF of 2Hz stimulated nerve regeneration, and a frequency of 7Hz can be used to stimulate bone growth. Frequencies of 10Hz promotes ligament healing, and 15, 20, and 72Hz may be used to decrease skin necrosis and stimulate capillary formation. Since tissues and organs are made of cells this research further confirms the hypothesis that the human body needs, resonates and responds to the 0-30 Hz range of frequencies.



Health Canada

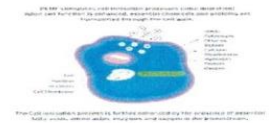
Santé Canada



CHRONIC PAIN



LESS PAIN/MORE GAIN



PEMF technology allows us to **broadcast** and **deliver electromagnetic fields** that **charge** our own **cells** into a state of homeostatic **RESONANCE**; **strengthening** the **energy-field** of **each cell**, thereby fortifying and protecting ourselves from **pathogens** that **damage** our body. It does so by **recharging** our **100 trillion cells**, *improving **ATP production***, *increasing **oxygenation***, *enhancing **circulation***, *improving **hydration***, and *gaining a better overall **absorption of supplements & nutrients***.



**CHRONIC
PAIN**



Santé Health
Canada Canada

LN/NH: 6918

Therapeutic Products Directorate
Medical Devices Bureau
Direction des produits thérapeutiques
Bureau des matériels médicaux

Medical Device Licence

* AMENDED *

Licence Number: 6918
First Issue Date: 1999/06/30
Amended Date: 2012/02/03

Homologation d'un instrument médical

* MODIFIÉE *

No d'homologation:
Première date de délivrance:
Date de modification:

Device Class/Classe de l'instrument: 2

This Licence is issued in accordance with the
Medical Devices Regulations, Section 36,
for the following medical device:

La présente homologation est délivrée en vertu
de l'article 36 du Règlement sur les instruments
médicaux pour l'instrument médical suivant:

Licence Name/Nom de l'homologation:

CENTURION MAGNETOTHERAPY

Licence Type/Type d'homologation:

System / Système

Reason for Amendment/Raison de la modification

ADDITION OF CATALOGUE NUMBERS

Manufacturer Name & Address/Nom du fabricant & adresse

CENTURION MEDICAL CORPORATION

2616-16 ST. N.E.
UNIT 2
CALGARY, ALBERTA
CANADA
T2E 7J8

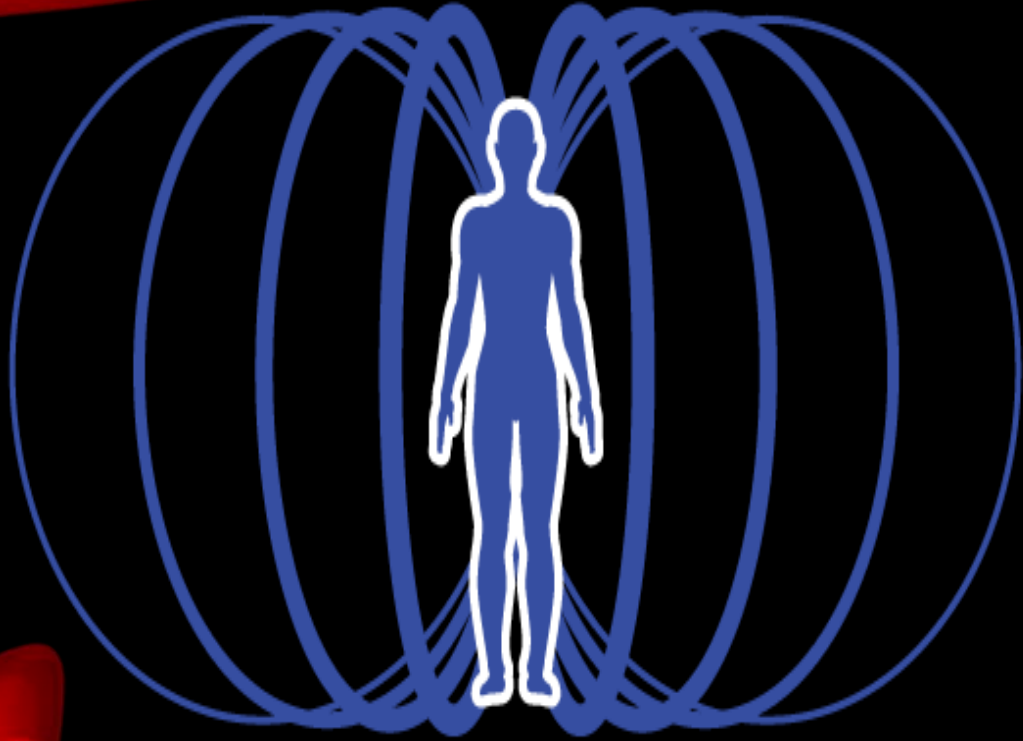
Don Boyer, A/Director, Medical Devices Bureau/Directeur intérimaire, Bureau des matériels médicaux

Application Number: 192247
Numéro de la demande:

Manufacturer ID: 102212
Identificateur du fabricant:



**CHRONIC
PAIN**



Centurion[®]

Tesla Technology for Human Health



Health Canada Santé Canada



Centurion[®]
Tesla Technology for Human Health



BECOME



Health
Canada

Santé
Canada

