

New York

Zoning Analysis

Table of Context

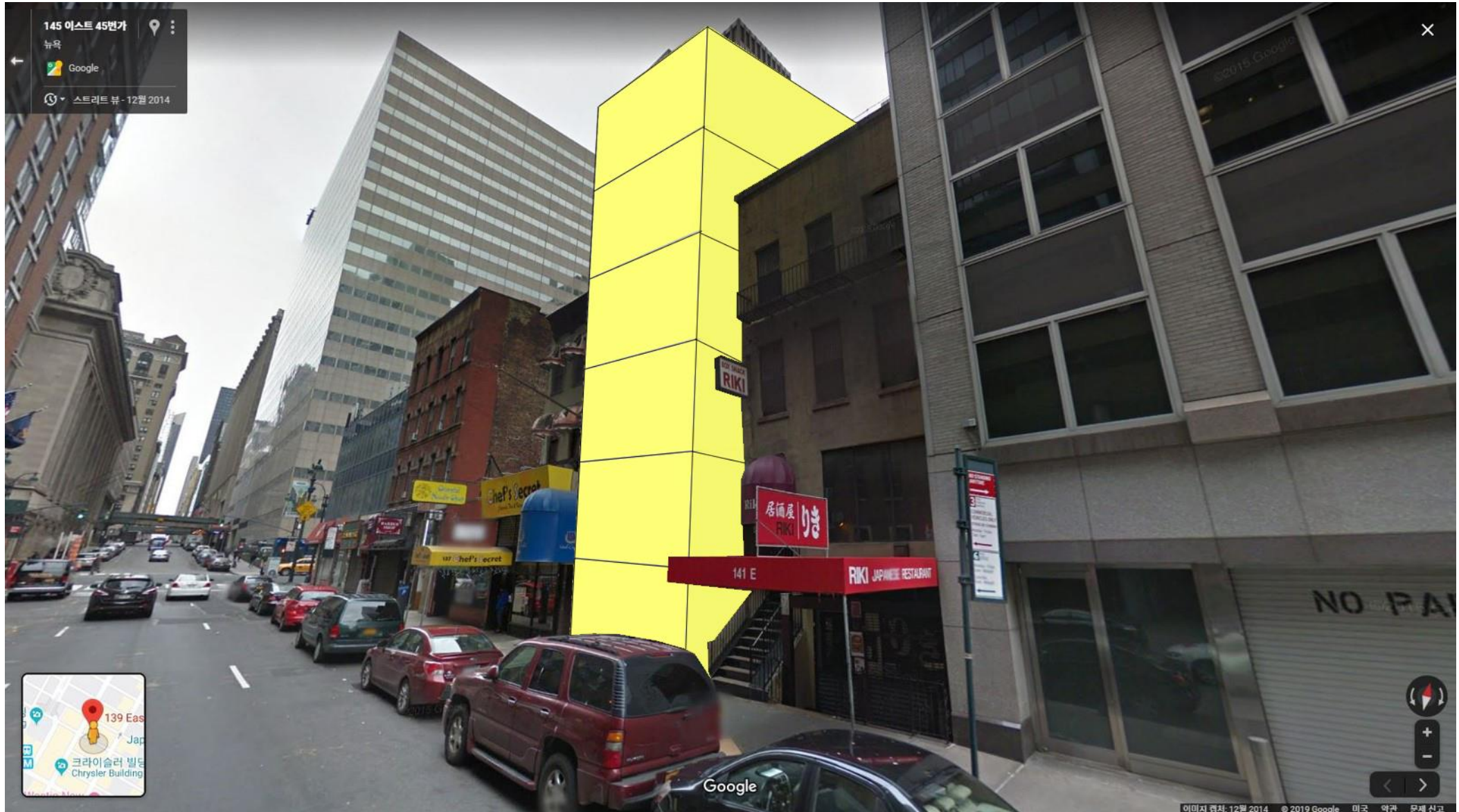
- 139 E 45th St New York NY 10017
- 1800-1806 Flatbush Ave, Brooklyn NY 11210
- 2252,2256 & 2258 Aqueduct Ave East Bronx, NY 10453

139 E 45th St
New York NY 10017

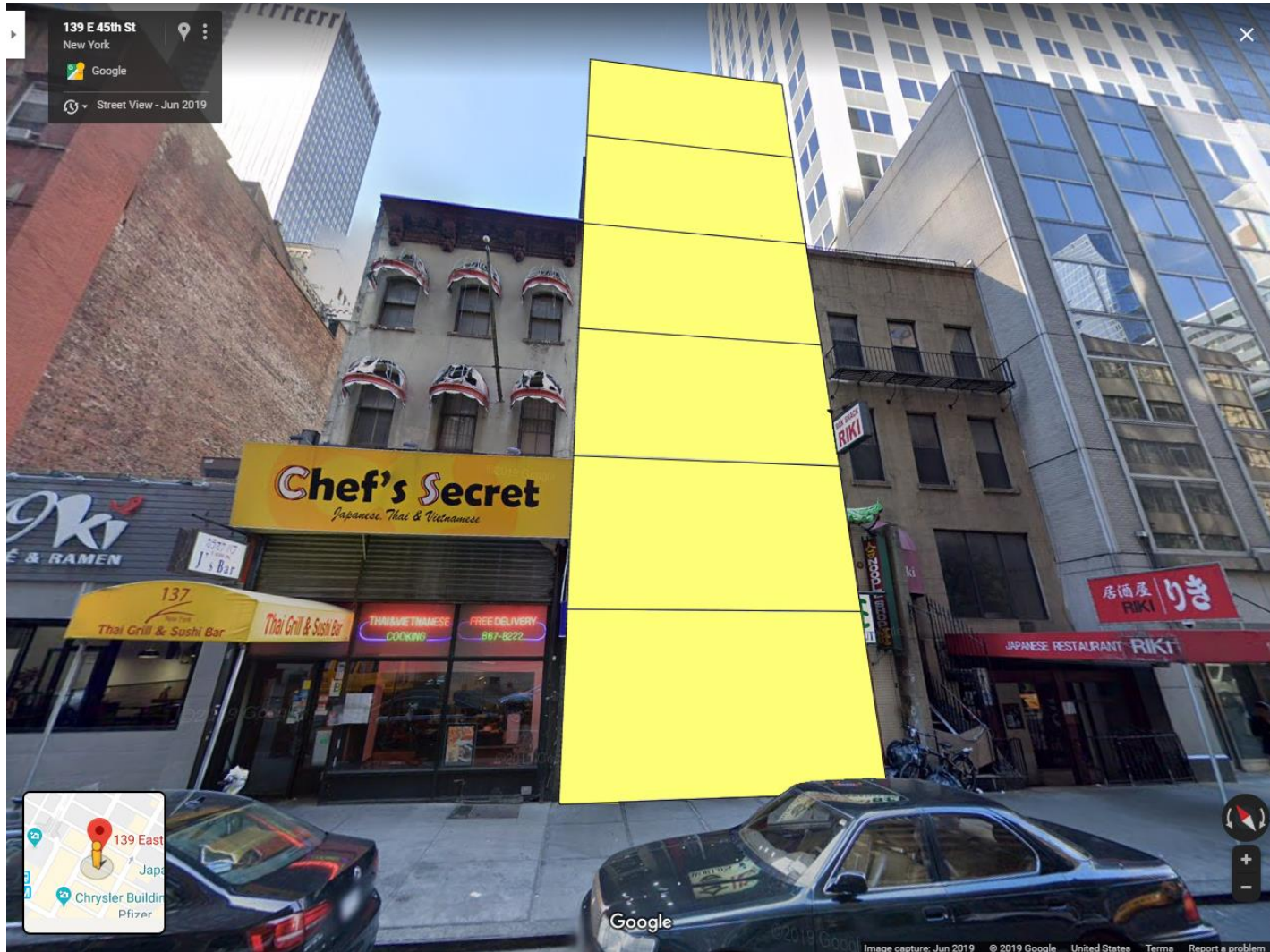
Existing Condition



Maximum Volume



Brief Summary



Location : 139 E 45th St. New York NY 10017

Zoning : C5-2.5 (MID-Special Midtown District)

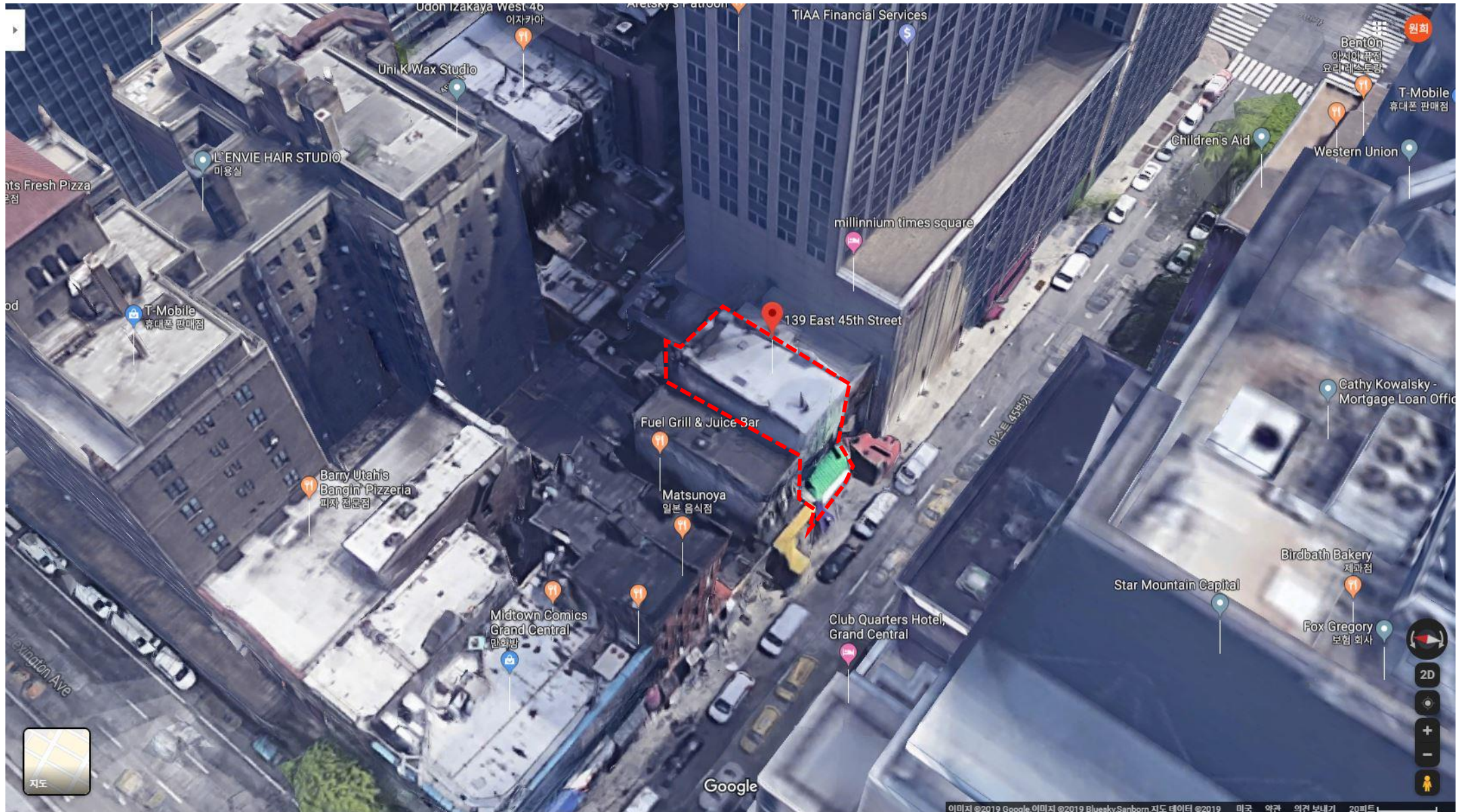
FAR : 12.0

Building Coverage Ratio : 50%

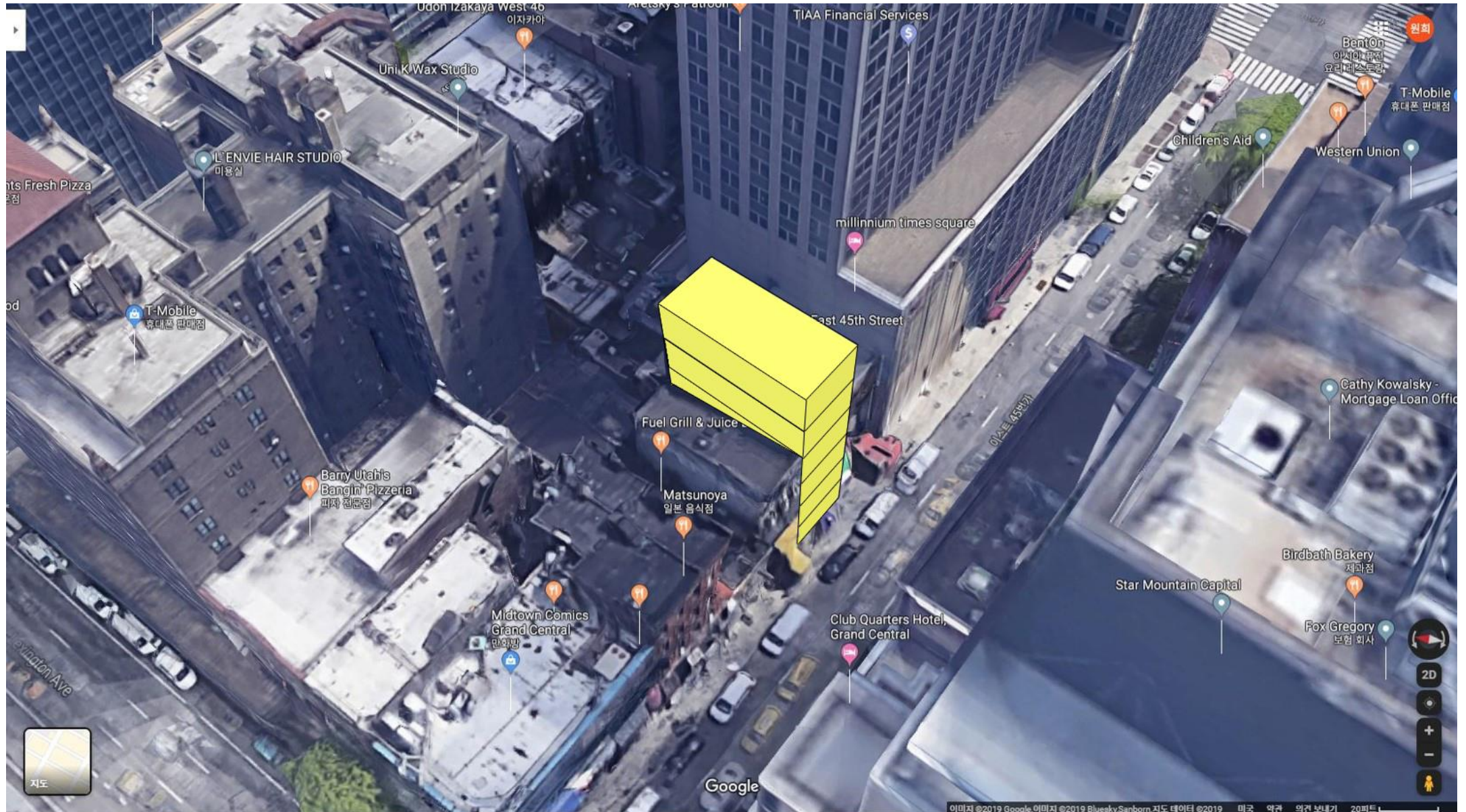
Set Back : 10 FT

Height Limit : 90 FT

Existing Condition



Maximum Volume

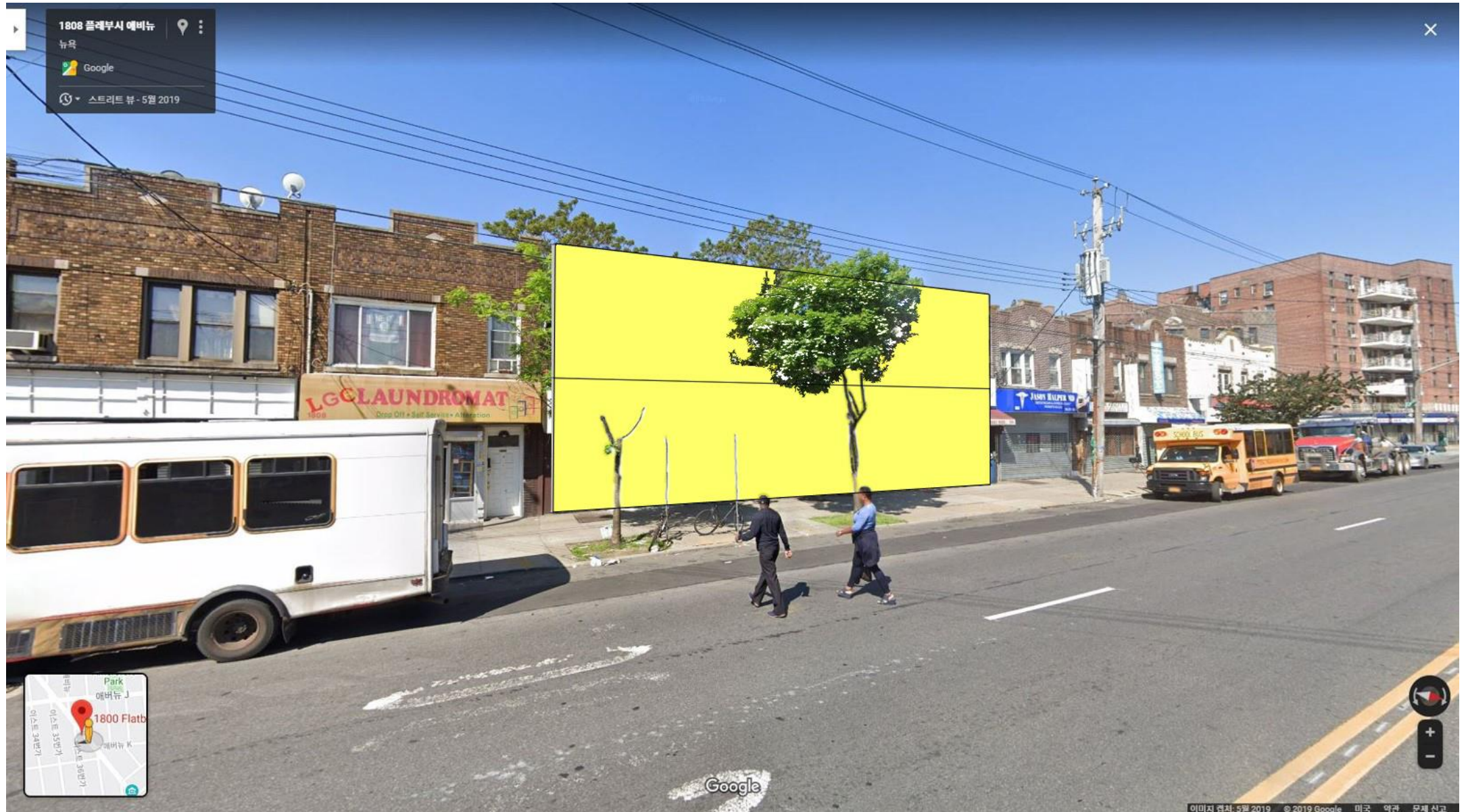


1800-1806 Flatbush Ave,
Brooklyn NY 11210

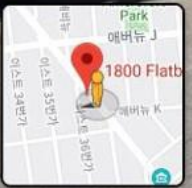
Existing Condition



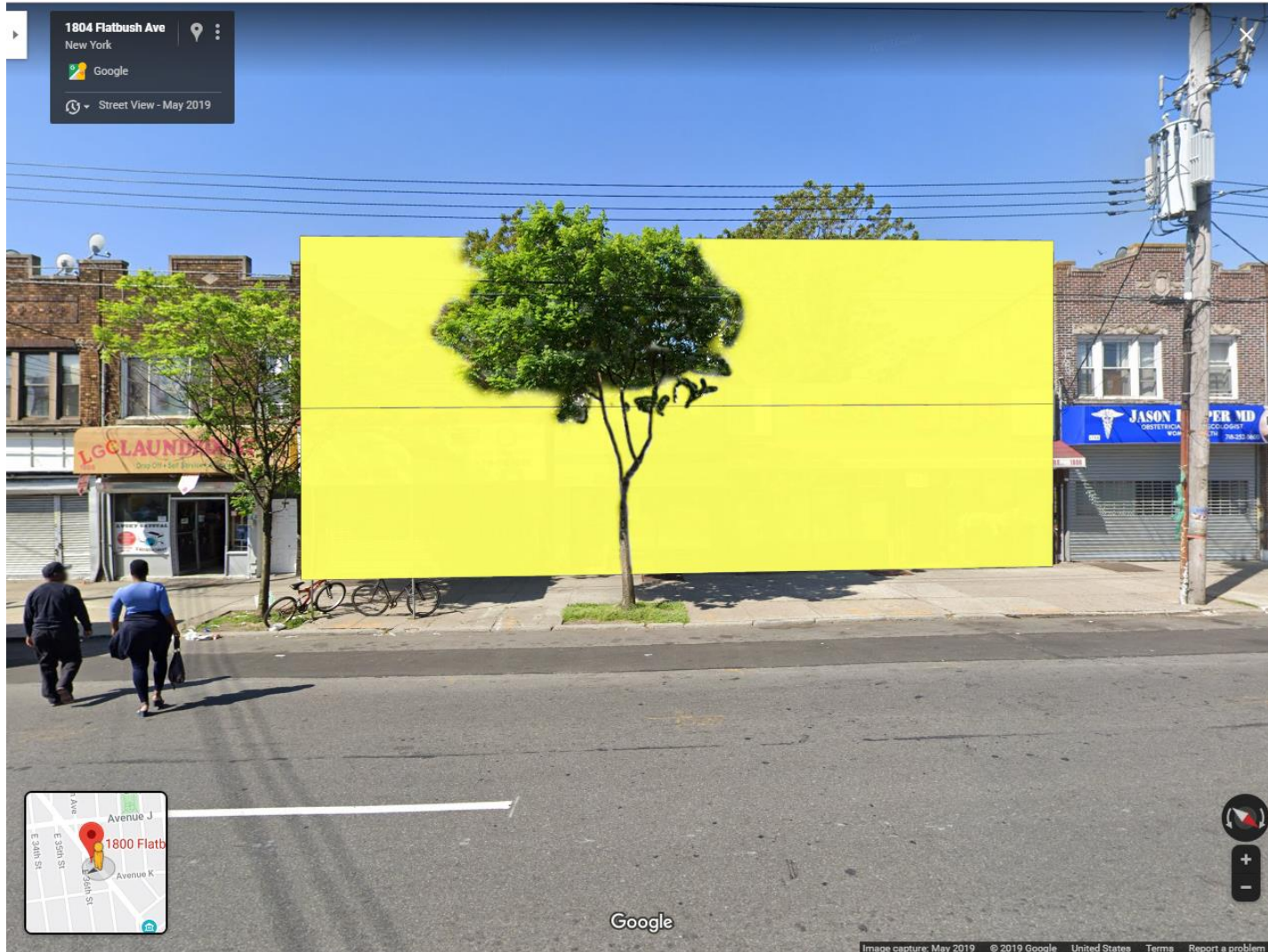
Maximum Volume



1808 플레부시 에버뉴
뉴욕
Google
스트리트 뷰 - 5월 2019



Brief Summary



Location : 1800-1806 Flatbush Ave,
Brooklyn NY 11210

Zoning :R5 (C2-2 Overlay)

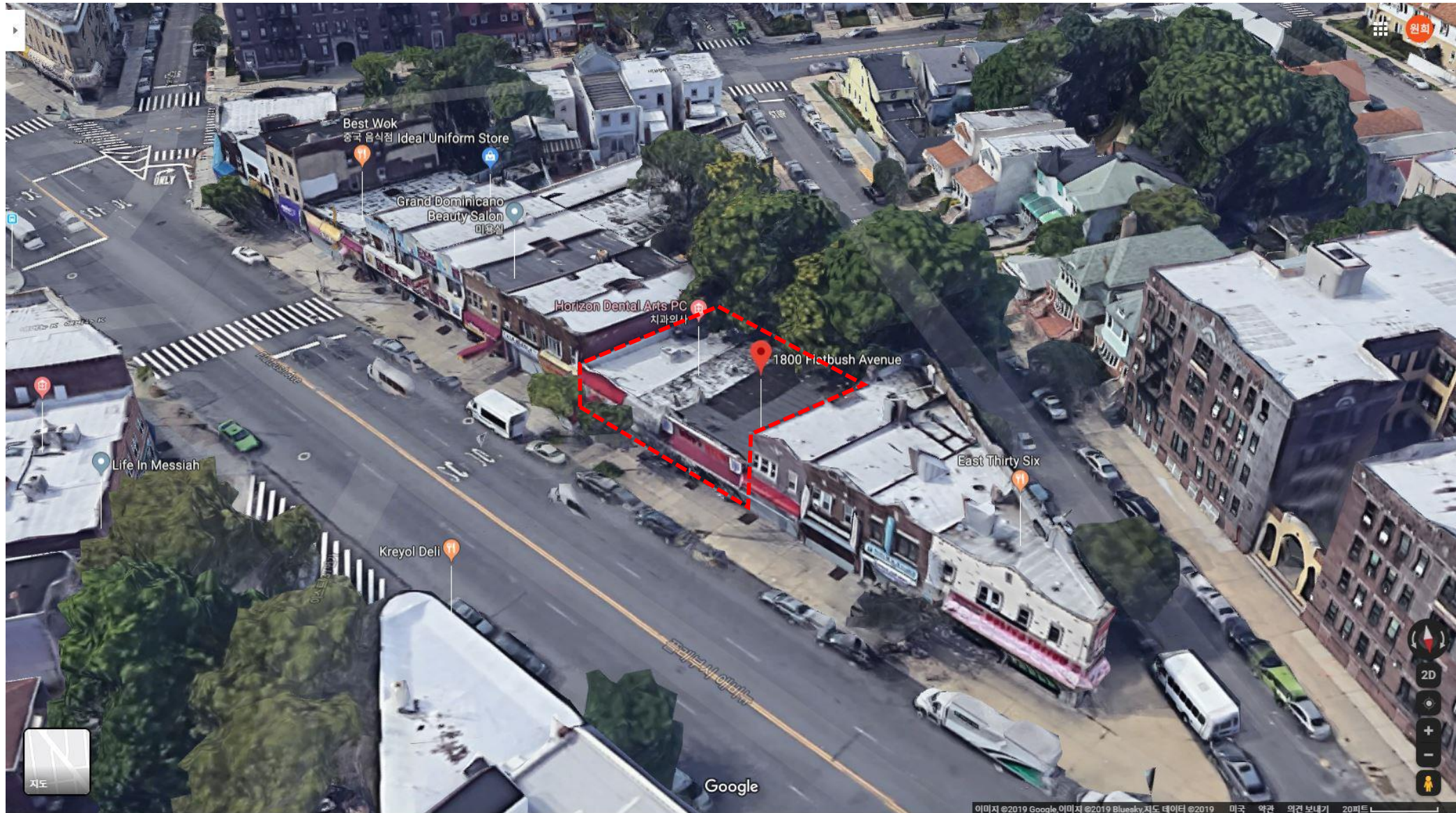
FAR : 1.0 (Commercial)
2.0 (Commercial + Community Facility)

Building Coverage Ratio : 55%

Set Back : 15 FT

Height Limit : 30 FT or Two Stories
whichever is less

Existing Condition



Maximum Volume



2252,2256 & 2258 Aqueduct Ave East
Bronx, NY 10453

Existing Condition



Maximum Volume



Brief Summary



Location : 2252,2256 & 2258 Aqueduct Ave E.
Bronx, NY 10453

Zoning : R7-1

FAR : 4.8

Building Coverage Ratio : 65%

Set Back : 15 FT

Height Limit : 85 FT

Existing Condition



Maximum Volume

