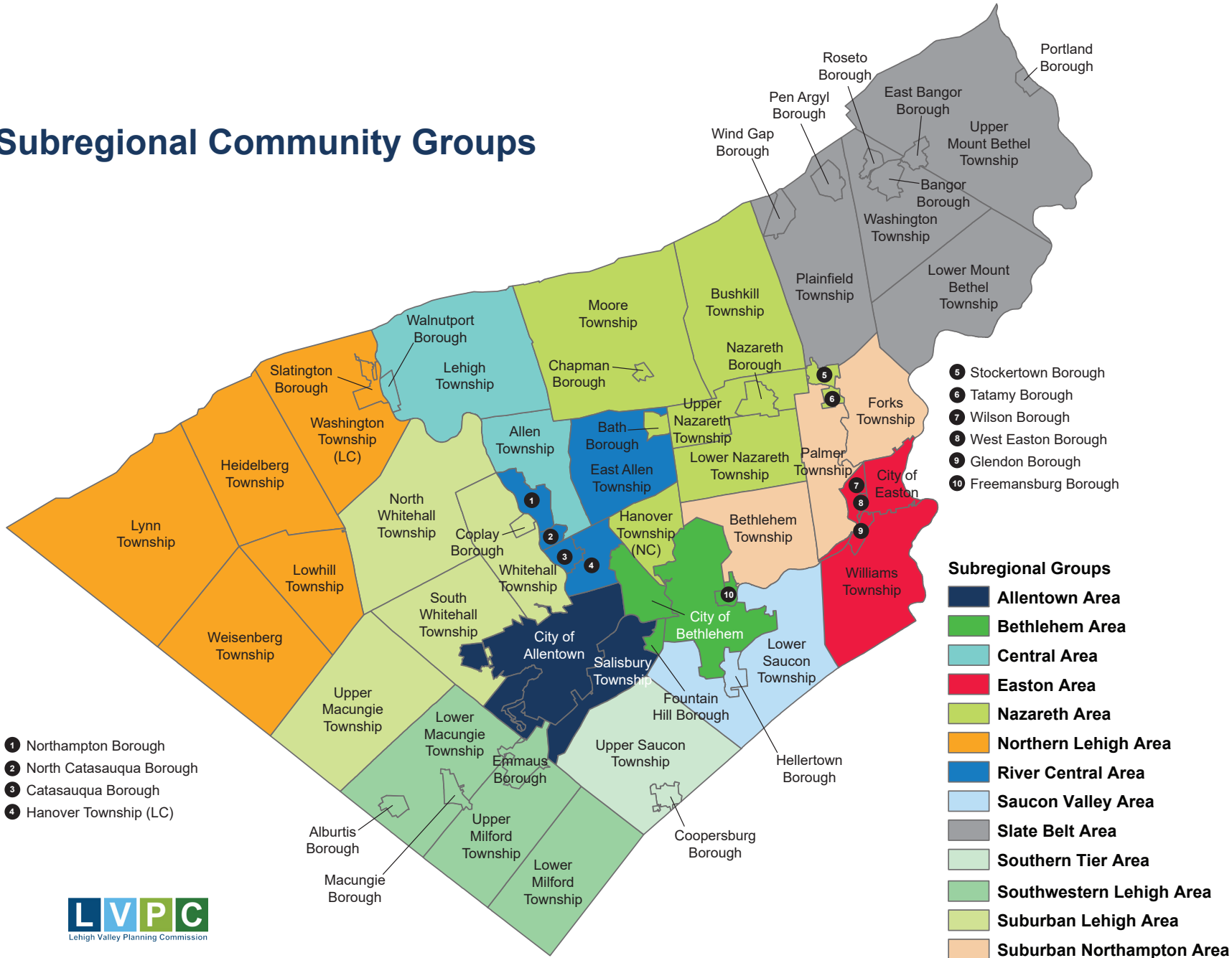


Subregional Community Groups



2022 Subregional + Municipal Subdivision + Land Development Activity



Legend: AL = Assisted-Living; APT = Apartment; CONDO = Condominium; MH = Manufactured Home; TOWN = Townhouse; SFD = Single-Family Detached; TW = Twin; AG = Agriculture; COMM = Commercial; IND = Industrial; OFF = Office; PUB = Public/Quasi-public; REC = Recreation; RET = Retail; WARE = Warehouse

Allentown Area

Municipality	Residential Units								Non-Residential Square Feet								
	AL	APT	CONDO	MH	TOWN	SFD	TW	Total	AG	COMM	IND	OFF	PUB	REC	RET	WARE	Total
City of Allentown	-	932	-	-	62	14	44	1,052	-	260,499	-	10,049	192,391	13,500	40,910	1,292,459	1,809,808
Salisbury Township	-	24	-	-	-	7	2	33	-	2,722	-	24,300	24,709	-	-	-	51,731
Subregion Total	-	956	-	-	62	21	46	1,085	-	263,221	-	34,349	217,100	13,500	40,910	1,292,459	1,861,539

Bethlehem Area

Municipality	Residential Units								Non-Residential Square Feet								
	AL	APT	CONDO	MH	TOWN	SFD	TW	Total	AG	COMM	IND	OFF	PUB	REC	RET	WARE	Total
City of Bethlehem	-	364	-	-	12	6	4	386	-	31,081	-	183,817	591,346	-	48,222	421,880	1,276,346
Fountain Hill Borough	-	-	-	-	-	-	-	-	-	-	-	-	-	-	-	-	-
Freemansburg Borough	-	24	-	-	-	-	2	26	-	-	-	-	-	-	-	-	-
Subregion Total	-	388	-	-	12	6	6	412	-	31,081	-	183,817	591,346	-	48,222	421,880	1,276,346

Central Area

Municipality	Residential Units								Non-Residential Square Feet								
	AL	APT	CONDO	MH	TOWN	SFD	TW	Total	AG	COMM	IND	OFF	PUB	REC	RET	WARE	Total
Allen Township	-	256	-	-	225	65	108	654	-	22,300	-	-	-	-	-	-	22,300
Lehigh Township	-	-	-	-	-	22	-	22	-	130,150	-	-	75,200	-	-	-	205,350
Walnutport Borough	-	-	-	-	-	-	-	-	-	14,976	-	-	-	-	-	-	14,976
Subregion Total	-	256	-	-	225	87	108	676	-	167,426	-	-	75,200	-	-	-	242,626

Easton Area

Municipality	Residential Units								Non-Residential Square Feet								
	AL	APT	CONDO	MH	TOWN	SFD	TW	Total	AG	COMM	IND	OFF	PUB	REC	RET	TRANS	Total
City of Easton	-	596	42	-	-	1	2	641	-	150,615	16,000	-	14,236	-	6,233	-	187,084
Glendon Borough	-	-	-	-	-	-	-	-	-	2,520	-	-	-	-	-	-	2,520
West Easton Borough	-	-	-	-	-	-	-	-	-	-	-	-	-	-	-	-	-
Williams Township	-	-	-	-	-	21	-	21	-	3,344	900	-	-	-	-	-	4,244
Wilson Borough	-	-	-	-	-	-	-	-	-	-	-	-	-	-	-	-	-
Subregion Total	-	596	42	-	-	22	2	662	-	156,479	16,900	-	14,236	-	6,233	-	193,848

Nazareth Area

Municipality	Residential Units								Non-Residential Square Feet								
	AL	APT	CONDO	MH	TOWN	SFD	TW	Total	AG	COMM	IND	OFF	PUB	REC	RET	WARE	Total
Bath Borough	-	36	-	-	-	2	-	38	-	-	-	-	-	-	-	-	-
Bushkill Township	-	-	-	-	-	20	-	20	-	32,508	-	-	-	-	-	-	32,508
Chapman Borough	-	-	-	-	-	-	-	-	-	-	-	-	-	-	-	-	-
Hanover Township NC	-	-	-	-	-	-	-	-	-	-	-	7,522	-	-	-	372,700	380,222
Lower Nazareth Township	-	-	-	-	-	-	-	-	-	149,243	-	-	-	-	-	917,520	1,066,763
Moore Township	-	-	-	-	-	5	-	5	-	6,000	-	3,920	1,250	-	-	-	11,170
Nazareth Borough	-	-	-	-	4	-	-	4	-	-	-	-	-	-	-	-	-
Stockertown Borough	-	-	-	-	-	-	-	-	-	-	-	-	-	-	-	147,000	147,000
Tatamy Borough	-	-	-	-	-	7	-	7	-	-	-	-	-	-	-	-	-
Upper Nazareth Township	-	-	-	-	-	28	16	44	-	-	-	-	-	-	-	-	-
Subregion Total	-	36	-	-	4	62	16	118	-	187,751	-	11,442	1,250	-	-	1,437,220	1,637,663

Northern Lehigh Area

Municipality	Residential Units								Non-Residential Square Feet								
	AL	APT	CONDO	MH	TOWN	SFD	TW	Total	AG	COMM	IND	OFF	PUB	REC	RET	WARE	Total
Heidelberg Township	-	-	-	-	-	1	-	1	-	-	-	-	-	-	-	-	-
Lowhill Township	-	-	-	-	-	3	-	3	-	-	-	-	-	-	-	802,960	802,960
Lynn Township	-	-	-	-	-	5	-	5	68,900	-	-	-	-	-	-	-	68,900
Slatington Borough	-	-	-	-	-	-	-	-	-	-	-	-	-	-	-	-	-
Washington Township LC	-	-	-	-	-	9	-	9	-	-	23,704	728	-	-	10,640	-	35,072
Weisenberg Township	-	-	-	-	-	9	-	9	-	105,111	-	-	-	-	-	105,000	210,111
Subregion Total	-	-	-	-	-	27	-	27	68,900	105,111	23,704	728	-	-	10,640	907,960	1,117,043

River Central Area

Municipality	Residential Units								Non-Residential Square Feet								
	AL	APT	CONDO	MH	TOWN	SFD	TW	Total	AG	COMM	IND	OFF	PUB	REC	RET	WARE	Total
Catasauqua Borough	-	-	-	-	36	-	-	36	-	-	-	-	-	-	-	-	-
East Allen Township	-	-	-	-	-	46	-	46	-	2,436	-	41,566	149,410	-	-	477,600	671,012
Hanover Township LC	-	-	-	-	-	-	-	-	-	-	66,233	-	-	-	-	317,420	383,653
North Catasauqua Borough	-	-	-	-	-	-	-	-	-	-	-	-	-	-	-	-	-
Northampton Borough	-	4	-	-	14	1	12	31	-	-	-	-	-	-	-	-	-
Subregion Total	-	4	-	-	50	47	12	113	-	2,436	66,233	41,566	149,410	-	-	795,020	1,054,665

Saucon Valley Area

Municipality	Residential Units								Non-Residential Square Feet								
	AL	APT	CONDO	MH	TOWN	SFD	TW	Total	AG	COMM	IND	OFF	PUB	REC	RET	WARE	Total
Hellertown Borough	-	-	-	-	-	-	-	-	-	-	-	-	-	-	-	-	-
Lower Saucon Township	-	-	-	-	-	16	2	18	-	-	-	-	-	-	-	-	-
Subregion Total	-	-	-	-	-	16	2	18	-	-	-	-	-	-	-	-	-

Slate Belt Area

Municipality	Residential Units								Non-Residential Square Feet								
	AL	APT	CONDO	MH	TOWN	SFD	TW	Total	AG	COMM	IND	OFF	PUB	REC	RET	WARE	Total
Bangor Borough	-	32	-	-	-	-	-	32	-	6,000	-	-	-	-	-	-	6,000
East Bangor Borough	-	-	-	-	-	-	-	-	-	-	-	-	-	-	-	-	-
Lower Mount Bethel Township	-	-	-	-	-	2	-	2	-	-	-	-	7,134	-	-	-	7,134
Pen Argyl Borough	-	228	-	-	48	-	-	276	-	-	-	-	-	-	-	-	-
Plainfield Township	-	-	-	-	51	34	-	85	-	3,000	9,938	-	-	1,979	-	-	14,917
Portland Borough	-	-	-	-	-	-	-	-	-	-	-	-	-	-	-	-	-
Roseto Borough	-	12	-	-	-	-	-	12	-	-	-	-	-	-	-	-	-
Upper Mount Bethel Township	-	-	-	-	-	-	-	-	-	-	-	-	-	-	1,206	6,261,290	6,262,496
Washington Township NC	-	-	-	-	-	2	-	2	-	-	-	-	-	-	-	-	-
Wind Gap Borough	-	-	-	-	-	-	-	-	-	-	-	-	-	-	-	-	-
Subregion Total	-	272	-	-	99	38	-	409	-	9,000	9,938	-	7,134	1,979	1,206	6,261,290	6,290,547

Southern Tier Area

Municipality	Residential Units								Non-Residential Square Feet								
	AL	APT	CONDO	MH	TOWN	SFD	TW	Total	AG	COMM	IND	OFF	PUB	REC	RET	WARE	Total
Coopersburg Borough	-	-	-	-	-	-	-	-	-	-	-	-	-	-	-	-	-
Upper Saucon Township	-	-	-	-	134	85	-	219	-	52,500	-	7,230	128,179	-	-	162,242	350,151
Subregion Total	-	-	-	-	134	85	-	219	-	52,500	-	7,230	128,179	-	-	162,242	350,151

Southwestern Lehigh Area

Municipality	Residential Units								Non-Residential Square Feet								
	AL	APT	CONDO	MH	TOWN	SFD	TW	Total	AG	COMM	IND	OFF	PUB	REC	RET	WARE	Total
Alburtis Borough	-	-	-	-	-	-	-	-	-	-	-	-	-	-	-	-	-
Emmaus Borough	-	132	-	-	-	26	-	158	-	6,619	20,000	-	-	-	-	-	26,619
Lower Macungie Township	-	526	-	-	8	39	-	573	-	287,879	81,259	30,471	-	-	336,052	-	735,661
Lower Milford Township	-	-	-	-	-	19	-	19	-	-	-	-	-	-	-	12,000	12,000
Macungie Borough	-	-	-	-	-	-	-	-	-	123,866	-	-	-	-	-	-	123,866
Upper Milford Township	-	-	-	-	-	31	-	31	-	4,800	-	-	-	-	-	-	4,800
Subregion Total	-	658	-	-	8	115	-	781	-	423,164	101,259	30,471	-	-	336,052	12,000	902,946

Suburban Lehigh Area

Municipality	Residential Units								Non-Residential Square Feet								
	AL	APT	CONDO	MH	TOWN	SFD	TW	Total	AG	COMM	IND	OFF	PUB	REC	RET	WARE	Total
Coplay Borough	-	-	-	-	-	-	2	2	-	-	-	-	-	-	-	-	-
North Whitehall Township	-	-	-	-	-	21	-	21	-	-	118,620	-	3,292	-	-	-	121,912
South Whitehall Township	-	154	-	-	-	-	-	154	-	134,198	-	-	136,605	-	2,400	-	273,203
Upper Macungie Township	-	-	-	-	198	114	-	312	-	14,624	206,416	11,200	-	-	-	3,449,486	3,681,726
Whitehall Township	-	-	-	-	-	44	2	46	-	144,550	-	3,100	93,946	-	-	25,000	266,596
Subregion Total	-	154	-	-	198	179	4	535	-	293,372	325,036	14,300	233,843	-	2,400	3,474,486	4,343,437

Suburban Northampton Area

Municipality	Residential Units								Non-Residential Square Feet								
	AL	APT	CONDO	MH	TOWN	SFD	TW	Total	AG	COMM	IND	OFF	PUB	REC	RET	WARE	Total
Bethlehem Township	124	272	-	-	79	115	4	594	-	-	-	-	81,156	-	8,230	300,837	390,223
Forks Township	-	54	-	-	-	182	64	300	-	16,081	-	8,600	-	-	2,250	699,190	726,121
Palmer Township	180	87	-	-	247	6	-	520	-	5,942	-	1,195	34,200	-	3,500	1,788,143	1,832,980
Subregion Total	304	413	-	-	326	303	68	1,414	-	22,023	-	9,795	115,356	-	13,980	-	2,949,324

Region Totals

GRAND TOTAL	Residential Units								Non-Residential Square Feet								
	AL	APT	CONDO	MH	TOWN	SFD	TW	Total	AG	COMM	IND	OFF	PUB	REC	RET	WARE	Total
	304	3,733	42	-	1,118	1,008	264	6,469	68,900	1,713,564	543,070	333,698	1,533,054	15,479	459,643	17,552,727	22,220,135